

## Before you get started

Make sure you read through all the instructions so that you can access and enjoy the internet anytime anywhere.

When this device is switched on, it should be kept at least 20 cm from the body.

This document is intended for HH41V, HH41CM, and HH41NH.

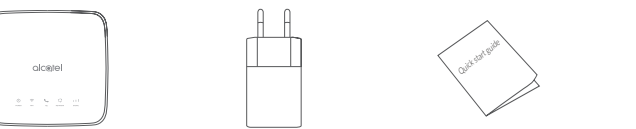
## Where to put your router

To get the best signal, the ideal place for your device will be near a window. Try a few different areas until you find the one with the best signal.

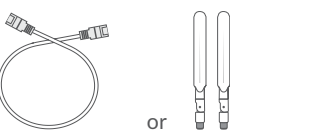
## Things that can affect your signal strength

Concrete or wooden walls can weaken the transmission of wireless signals. Electrical appliances that project strong electric or magnetic fields such as microwave ovens, refrigerators and satellite antennas can negatively affect your signal. Place your router away from such appliances.

## What's in the box:



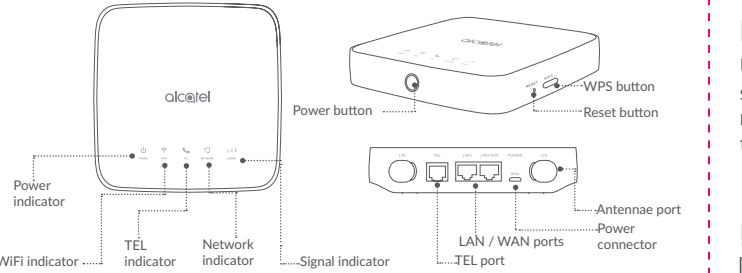
Cat4 Router      Power adapter      Quick start guide



Ethernet cable or External antenna (Optional)

- Only use the Alcatel approved power adapter included with this router.
- Unapproved chargers can be dangerous and damage the device.

## Getting to know your device:



### Power button

- Once connected to a power outlet, your Cat4 Router will automatically power on.
- To power off your device, press and hold the power button for 3 seconds.
- To power on your device, press and hold the power button for 1 second.

### WPS button

To enable WPS, press and hold the WPS button for 3 seconds. The WiFi LED will start to flash blue. Then press the WPS button on the device you wish to

connect to within two minutes. Your Cat4 Router will automatically assign your network settings to the device you wish to connect to.

### Reset button

Use a paperclip or blunt pin to gently press and hold the reset button for 3 seconds, all LEDs will turn on, then off, and finally turn on again once the reset is completed. You can also reset the device via the Web-UI (refer to the Cat4 Router User Manual).

### LED description

Icon	Description
	<ul style="list-style-type: none"><li>• Solid blue: The device is powered on.</li><li>• Off: The device is powered off.</li></ul>
	<ul style="list-style-type: none"><li>• Solid blue: WiFi is enabled.</li><li>• Flashing blue: WPS connection is available.</li><li>• Off: WiFi is disabled.</li></ul>
	<ul style="list-style-type: none"><li>• Flashing blue: Phone is ringing.</li><li>• Solid blue: Phone is in call.</li><li>• Off: Phone is not in use.</li></ul>

Icon	Description
	<ul style="list-style-type: none"><li>• Solid blue: Connected to 2G/3G/4G/Ethernet.</li><li>• Solid red: No micro-SIM available or the device is not registered to the network.</li><li>• Flashing blue: Registered to 2G/3G/4G.</li></ul>
	<ul style="list-style-type: none"><li>• Solid blue: Signal strength ranges from 1-3 bars, with 3 being the strongest.</li><li>• Off: No service / No signal / No SIM / Invalid SIM.</li></ul>

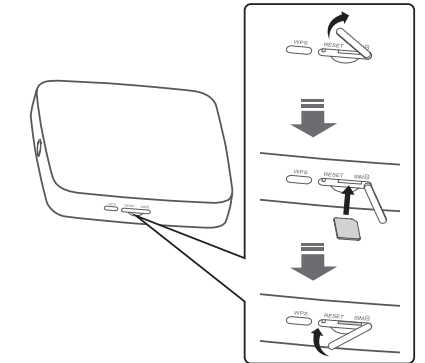
## Getting started with your device:

### Insert SIM

Follow the 3 steps in the illustration below.

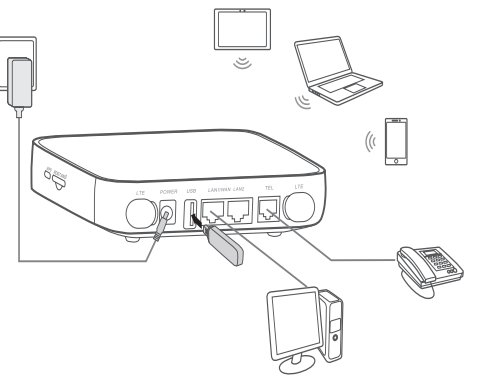
- 1) Open the SIM card slot cover.
- 2) Insert the SIM card into the SIM slot.
- 3) Close the SIM card slot cover.

Do not remove the SIM when your Cat4 Router is in use. Doing so will affect the performance of your device, and data stored on the SIM may be lost.



### Connect the power adapter

Follow the illustration below to plug in the power adapter. Once connected to a power outlet, your Cat4 Router will automatically power on.



To prevent interference caused by radio signals, place the Cat4 Router at least one metre away from phones and other electrical devices.

## Optional: Installing the external antennae

In areas with poor signal reception, connect external antenna to the two ports labelled 'LTE' to improve signal reception.

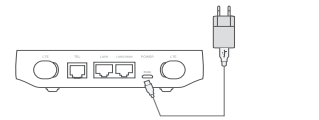
### Warning:

Before installing the external antennae, ensure that your Cat4 Router is powered off and disconnected from the power outlet.

The external antennae must be installed by a qualified technician.

Use antennae supplied by device manufacturer only.

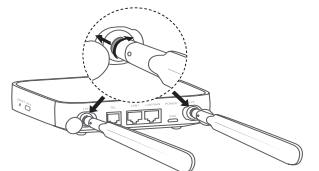
- 1) Power off your Cat4 Router and disconnect it from the power outlet.



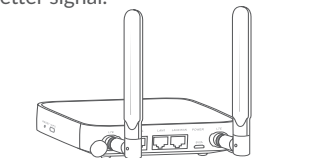
- 2) Open the 'LTE' covers on both sides.



- 3) Screw external antennae fully into the antennae port.



- 4) Keep external antennae pointed upwards to get a better signal.



## Connect your device to the network

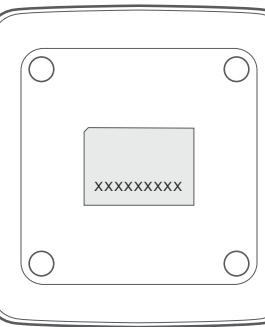
### • WiFi

To establish a wireless network connection, follow the steps below;

Device supports 2.4 GHz WiFi networks.

- 1) To make sure WiFi is enable, check to see if the WiFi LED on your device is blue. (Refer to the section: **Getting to know your device**)
- 2) Turn on WiFi on the device you wish to connect. For help refer to your laptop / device manual.

- 3) Search for the Wireless Network name on your laptop / device. The network name or SSID can be found on the label on the back of the device, along with your security / WiFi key.

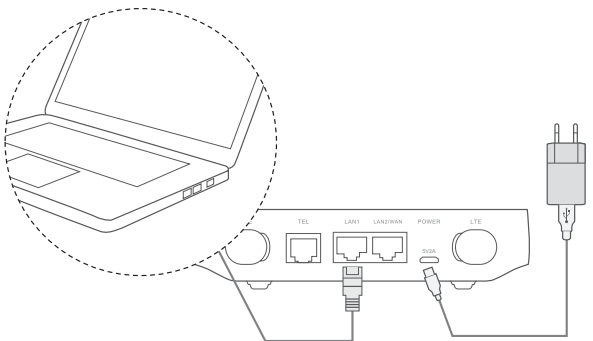


- 3) Click **connect** and enter the security / WiFi key. You'll now be connected with Cat4 Router.

### • Ethernet cable

Connect one end of the Ethernet cable into either of these two LAN ports. The other end simply plugs into your device.(ie. Laptop or PC)

Up to two devices can be connected using the LAN ports.



## How to change WiFi Key

- 1) Enter `http://192.168.1.1` in the address bar and press enter. The Home page will then load.
- 2) Click **Log in** and enter the password (**admin** by default) .  
Note: You will be forced to change the default password for additional security.
- 3) Go to Settings > WiFi > Basic to change WiFi Key.

## Safety reminder

- During thunderstorms, turn off the device and remove all cables.
- Do not use an external antenna or a power adapter that is not a standard component for the device or is not Alcatel approved. Alcatel is not liable for any problems that may result from use of such an external antennae or power adapter. Outdoor antennas must be installed by a qualified technician.
- The modem and SIM card are not compatible with any other device.

## Moving home?

Your Home Wireless Broadband service can move with you, just make sure there's coverage in your new location.

# LINKHUB

LTE cat4 Home Station

## Quick Start Guide



CJB1KA0ALAAA

alcatel