

Quick Start Guide

LIFE DETECT

Motion Sensor



CJB1H8002AAA

TCL

What's In The Box?



LIFEDETECT x 1



Bracket x 1



Screw x 1



Adhesive x 1



Quick start guide x 1



Wall plug x 1

Specification

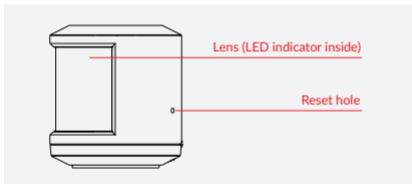
Product name	LIFEDETECT
Model name	MS01
Working temperature	-5°C ~ +40°C
Working humidity	0~95%RH, no condensation
Detection range	8 m
Horizontal detect angle	110°
Battery model	CR2450
Battery life	> 2 years
Operating frequency	2.4 GHz
Transmitted power	8±2dbm

Getting to Know Your LIFEDETECT

LIFEDETECT is a Zigbee infrared detection sensor which can detect humans and large animals. It is designed to work together with a LIFECONNECT. You can place it on a desk or install it on a wall using an adhesive or screws.

Note:

- This product can only be used indoors.
- This device requires a LIFECONNECT in order to work.

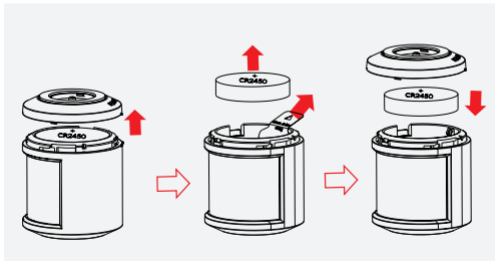


LED indicators

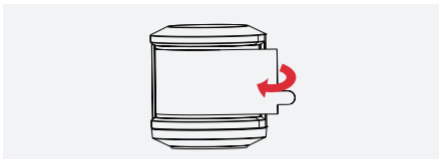
Flashing blue	Searching for LIFECONNECT
Constant blue	Connected to LIFECONNECT
Flashing red	<ul style="list-style-type: none">• Motion detection before joining Zigbee network.• Low battery

Connecting Your LIFEDETECT

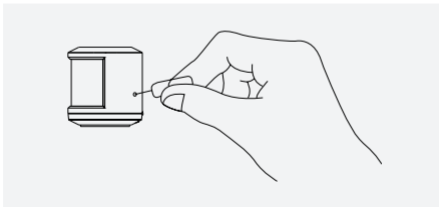
1. Make sure that LIFECONNECT is connected with your router.
2. Open your LIFE App, log in your account and select "+" in the App. Follow the on-screen instructions in the App to add and configure your LIFEDETECT.
3. Open the battery cover, take out the battery and the insulation tape (FCC ID could be seen here then), and then place the battery and battery cover back. The LED light will turn blue to indicate it is booting up.



4. Remove the protective film from the lens.



5. If you have added your LIFEDETECT successfully, you will see the LIFEDETECT home page in your LIFE App. If it has not been added, please use the pin to long press the reset hole for 3 seconds until it flashes blue, then add the LIFEDETECT again in the App.



Relinking Your LIFEDETECT

If you want to link your LIFEDETECT with another LIFECONNECT, you can follow the steps below:

1. Long press the reset hole for more than 3 seconds.
2. Press '+' and follow instructions within the App.
3. Stand in front of your LIFEDETECT and check for a message in the App to ensure it is working correctly.

Installing Your LIFEDETECT

Effective range: Please stand in front of your LIFEDETECT to see if the LIFE App can receive detection messages before fixing your LIFEDETECT to a table or wall.

- If yes, it means the Zigbee distance is suitable.
- If not, please select a location closer to your LIFECONNECT.

Desktop Installation

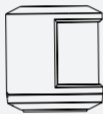
Place your LIFEDETECT on the table close to the edge and aligned with the area which you want to detect. Please try to ensure that it is close to the edge of the table or cabinet.

The recommended installation height is 0.5~1.5m. Please refer to **Detection Range** to select your best installation solution.

Wall Installation

Mount your LIFEDETECT on a smooth wall using an adhesive or screw.

Desktop Installation



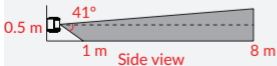
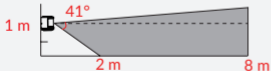
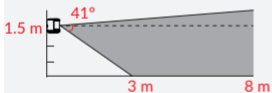
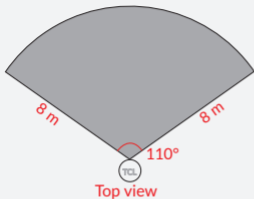
0.5~1.5m

Wall Installation



0.5~1.5m

Detection Range



Note:

If you place the LIFEDETECT upside down, the detection range will be inverted. Please position your LIFEDETECT in such a way to best meet your requirements.

Note:

1. Don't install your LIFEDETECT outdoors.
2. Avoid direct sunlight.
3. Avoid installing directly in line with air conditioning units or microwave ovens.
4. Avoid installation near water vapour or in areas of high humidity.
5. Avoid curtains or screens which might block the detection area.
6. Please don't install your LIFEDETECT in an unstable or vibration prone area.
7. Please don't include continuously moving objects within the detection area (e.g. curtains, window shades etc.).
8. Please place your LIFEDETECT far away from metal, microwave ovens and closed off areas.
9. Please don't allow your furniture to block your LIFEDETECT.

FAQ

1. Q: Can I change the battery?

A: Yes. The battery can be changed by the user. The battery model is CR2450 and widely available in supermarkets.

2. Q: Can my LIFEDETECT sense animals?

A: Yes. It can detect large animals (dogs, cats, etc.).

3. Q: Can my LIFEDETECT work on its own?

A: No. It should work together with a LIFECONNECT. LIFECONNECT is the Wi-Fi/Zigbee gateway.

4. Q: Is my LIFEDETECT water and dust proof?

A: No. The device is not water or dust proof.

5. Q: If I place my LIFEDETECT at a lower height will it still work?

A: If you plan on placing your LIFEDETECT at a low height (< 0.5 m), it is recommended to place it upside down, with the top of the device facing the ground. In this case, the detection range shown on Page.9 will be inverted.

Safety and Use

Electronic Devices

Turn off your device near high-precision electronic devices. The wireless device may affect the performance of these devices. Such devices include hearing aids, pacemakers, fire alarm systems, automatic gates, and other automatic devices. If you are using an electronic medical device, consult the device manufacturer to confirm whether radio waves affect its operation.

Hospitals

Pay attention to the following points in hospitals or health care facilities:

- Do not take your wireless device into the operating room, intensive care unit, or coronary care unit.
- Do not use your wireless device at places for medical treatment where wireless device use is prohibited.

Storage Environment

- Do not place magnetic storage media such as magnetic cards and floppy disks near the wireless device. Radiation from the wireless device may erase the information stored on them.
- Do not put your wireless device and other accessories in containers with strong magnetic fields, such as an induction cooker or a

microwave oven. Otherwise, circuit failure, fire, or explosion may occur.

- Do not leave your wireless device in a very hot or cold place. Otherwise, malfunction of the product, fire, or explosion may occur.
- Do not subject your wireless device to serious collision or shock. Otherwise, wireless device malfunction, overheating, fire, or explosion may occur.

Child Safety

- Put your wireless device in places beyond the reach of children. Do not allow children to use the wireless device without guidance.
- Do not allow children to put the device in their mouths.
- Do not allow children to touch small fittings. Otherwise, suffocation or choking could occur if they are swallowed.

Operating Environment

- The wireless device is not water-resistant. Keep it dry. Protect the wireless device from water or vapour. Do not touch the wireless device with a wet hand. Otherwise, short-circuit, malfunction of the product or electric shock may occur.
- Do not use the wireless device in dusty, damp and dirty places

or within magnetic fields. Otherwise, malfunction of the circuitry may occur.

- The wireless device may interfere with nearby TV sets, radios and PCs.
- In accordance with international standards for radio frequency and radiation, use wireless device accessories approved by the manufacturer only.

Traffic Safety

When driving, do not use the wireless device.

- When switched on, this device emits electromagnetic waves that can interfere with the vehicle's electronic systems such as ABS anti-lock brakes or airbags. To ensure that there is no problem, do not place this device on top of the dashboard or within an airbag deployment area.
- Check with your car dealer or the car manufacturer to make sure that the dashboard is adequately shielded from this device RF energy.

Conditions of Use

- Indoor use only.
- Do not allow your device to be exposed to adverse weather or environmental conditions (moisture, humidity, rain, infiltration of

liquids, dust, sea air, etc.).

- When this device is switched on, it should be kept at least 20 cm from the body.
- When this device is switched on, it should be kept at least 15 cm from any medical device such as a pacemaker, a hearing aid or insulin pump, etc.
- When replacing the cover, please note that this device may contain substances that could create an allergic reaction.
- Do not paint it.
- The manufacturer's recommended operating temperature range is 0°C to +45°C.
- Always handle this device with care and keep it in a clean and dust-free place.
- Clean this device with a dry cloth only.
- Do not attempt to disassemble or repair this device or its accessories.
- Do not drop, throw or bend this device.
- Do not let children use this device and/or play with the this device and accessories without supervision.

Certification



This symbol on the device means that these products must be taken to collection points at the end of their life:

- Municipal waste disposal centres with specific bins for these items of equipment.
- Collection bins at points of sale.

They will then be recycled, preventing substances being disposed of in the environment and allowing their components to be reused.

In European Union countries:

These collection points are accessible free of charge.

All products with this sign must be brought to these collection points.

In non European Union jurisdictions:

Items of equipment with this symbol are not to be thrown into ordinary bins if your jurisdiction or your region has suitable recycling and collection facilities; instead they are to be taken to collection points for them to be recycled.

CAUTION: RISK OF EXPLOSION IF BATTERY IS REPLACED BY AN INCORRECT TYPE. DISPOSE OF USED BATTERIES ACCORDING TO INSTRUCTIONS.

Radio Waves

THIS DEVICE MEETS THE GOVERNMENT'S REQUIREMENTS FOR EXPOSURE TO RADIO WAVES.

Your device is a radio transmitter and receiver. It is designed and manufactured not to exceed the emission limits for exposure to radio-frequency (RF) energy. These limits are part of comprehensive guidelines and establish permitted levels of RF energy for the general population. The guidelines are based on standards that were developed by independent scientific organizations through periodic and thorough evaluation of scientific studies. These guidelines include a substantial safety margin designed to ensure the safety of all persons, regardless of age and health.

The World Health Organization (WHO) considers that present scientific information does not indicate the need for any special precautions for use of wireless devices. If individuals are concerned, they might choose to limit their own or their children's RF exposure by limiting the length of use to keep device away from the head and body. Additional WHO information about electromagnetic fields and public health are available on the following website: <http://www.who.int/peh-emf>.

Note: This equipment has been tested and found to comply with the limits for a Class B digital device pursuant to part 15 of the FCC Rules. These limits are designed to provide reasonable protection against

harmful interference in a residential installation. This equipment generates, uses and can radiate radio frequency energy and, if not installed and used in accordance with the instructions, may cause harmful interference to radio communications. However, there is no guarantee that interference to radio or television reception, which can be determined by turning the equipment off and on, the user is encouraged to try to correct the interference by one or more of the following measures:

- Reorient or relocate the receiving antenna;
- Increase the separation between the equipment and receiver;
- Connect the equipment into an outlet on a circuit different from that to which the receiver is connected;
- Consult the dealer or an experienced radio/ TV technician for help.

Changes or modifications not expressly approved by the party responsible for compliance could void the user's authority to operate the equipment.

For the receiver devices associated with the operation of a licensed radio service (e.g. FM broadcast), they bear the following statement:

This device complies with Part 15 of the FCC Rules and Innovation, Science and Economic Development Canada licence-exempt RSS standard(s).

Operation is subject to the following two conditions:

- This device may not cause harmful interference;

- This device must accept any interference received, including interference that may cause undesired operation.

Your device is equipped with a built-in antenna. For optimal operation, you should avoid touching it or degrading it.

Please note by using the device some of your personal data may be shared with the main device. It is under your own responsibility to protect your own personal data, not to share with it with any unauthorized devices or third party devices connected to yours. For products with Wi-Fi features, only connect to trusted Wi-Fi networks. These precautions will help prevent unauthorized access to your device. Choose your apps and updates carefully, and install from trusted sources only. Note that any data shared with TCL Communication Ltd. is stored in accordance with applicable data protection legislation. For these purposes TCL Communication Ltd. implements and maintains appropriate technical and organizational measures to protect all personal data, for example against unauthorized or unlawful processing and accidental loss or destruction of or damage to such personal data whereby the measures shall provide a level of security that is appropriate having regard to

- The technical possibilities available;
- The costs for implementing the measures;
- The risks involved with the processing of the personal data, and;

- The sensitivity of the personal data processed.

You can access, review and edit your personal information at any time by logging into your user account, visiting your user profile or by contacting us directly. Should you require us to edit or delete your personal data, we may ask you to provide us with evidence of your identity before we can act on your request.

Innovation, Science and Economic Development Canada (ISED)
Notice

This device complies with Innovation, Science and Economic Development Canada license-exempt RSS standard(s). Operation is subject to the following two conditions:

- This device may not cause interference, and;
- This device must accept any interference, including interference that may cause undesired operation of the device.

This Class B digital apparatus complies with Canadian ICES-003.

Innovation, Science and Economic Development Canada (ISED)
Radiation Exposure Statement

Lisense

FCC ID: 2ACCJBC03

Warranty

The device is warranted against any deviation from technical specifications for a period of twelve (12)⁽¹⁾ months from the date specified on your original invoice.

Batteries and accessories sold with your device are also warranted against any defect which may occur during the first six (6) months from the date of purchase as shown on your original invoice.

Under the terms of this warranty, you must immediately inform your vendor in case of a conformity defect on this device and present a proof of purchase.

The vendor or repair centre will decide whether to replace or repair this device, as appropriate.

Repaired or replaced versions of this device are warranted for ONE (1) month unless there are statutory provisions to the contrary.

This warranty shall not apply to damage or defects to this device due to:

- 1) Not following the instructions for use or installation.
- 2) Not being compliant with technical and safety standards applicable in the geographical area where this device is used.

⁽¹⁾ The warranty period may vary depending on your country.

- 3) Improper maintenance of sources of energy, and of the overall electric installation.
- 4) Accidents or consequences of theft of the vehicle in which this device is transported, acts of vandalism, lightning, fire, humidity, infiltration of liquids, inclement weather.
- 5) Connecting to or integrating into this device any equipment not supplied or not recommended by the manufacturer.
- 6) Any servicing, modification or repair performed by individuals not authorised by the manufacturer, the vendor or the approved maintenance centre.
- 7) Use of this device for a purpose other than that for which it was designed.
- 8) Malfunctions caused by external causes (e.g., radio interference from other equipment, power voltage fluctuations).
- 9) Faulty connections resulting from unsatisfactory radio transmission or caused by the absence of radio relay coverage.

Warranty is also excluded for this device on which markings or serial numbers have been removed or altered.

The LIFECONNECT serial number (SN) should be reported together with this device for repairing. The serial number (SN) can be found on the label on the back of the device.

This device is also warranted against hidden defects (defects inherent in the design, manufacture, etc.).

There are no other express warranties other than this printed limited warranty, expressed or implied, of any nature whatsoever.

In no event shall the manufacturer be liable for incidental or consequential damages of any nature whatsoever, including but not limited to trading loss, commercial loss, to the full extent those damages can be disclaimed by law. Some countries/states do not allow the exclusion or limitation of incidental or consequential damages, or limitation of the duration of implied warranties, so the preceding limitations or exclusions may not apply to you.

All rights reserved © 2017 TCL Communication LTD.

Address: Room 1910-12A, Tower 3, China HK City, 33 Canton Road, Tsimshatsui, Kowloon, Hong Kong