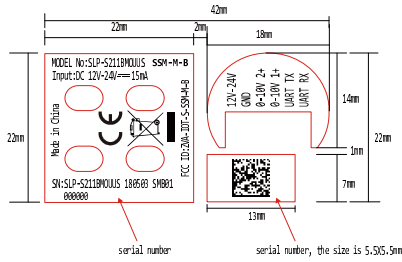


Example



QR code type: Data Matrix
font: Consolas

Example for serial number

SLP-S2118MOUUS 180503 SMB01 000000

serial number rules: Product code (14digit) + Space (1digit) + Date (YYMMDD) + Space (1digit) + CCT (5digit) + Space (1digit) + Serial (6digit)

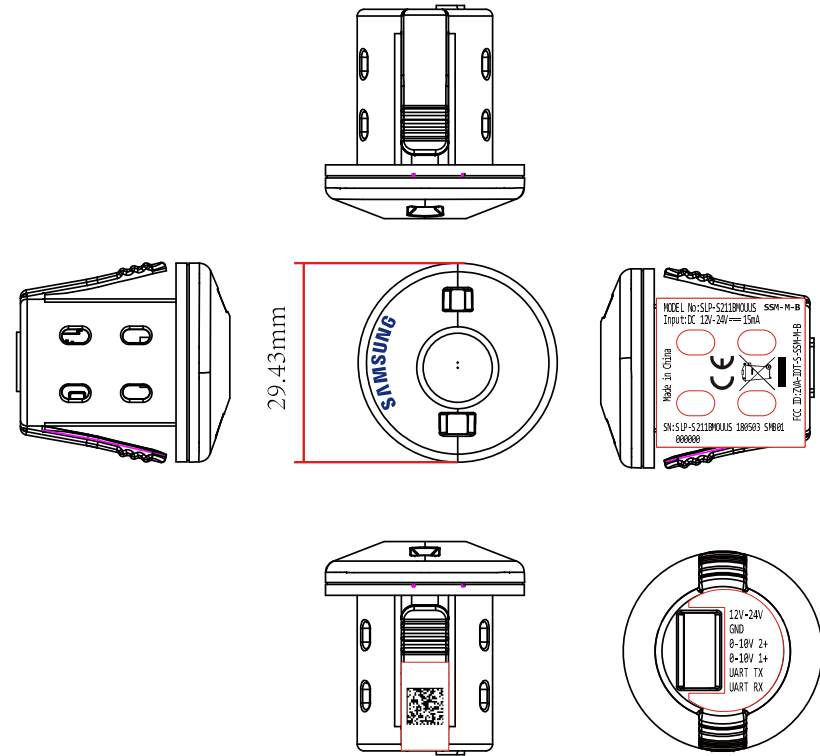
Product code (14digit): SLP-S2118MOUUS

Date(YYMMDD): year & month & day for actual production, for example: 20180503 is 180503, if plans to delay, the date effective range is 2 months. The date is first day for a batch, for example: a batch production date is 20180503 & 20180504 & 20180505, the date is 180503.

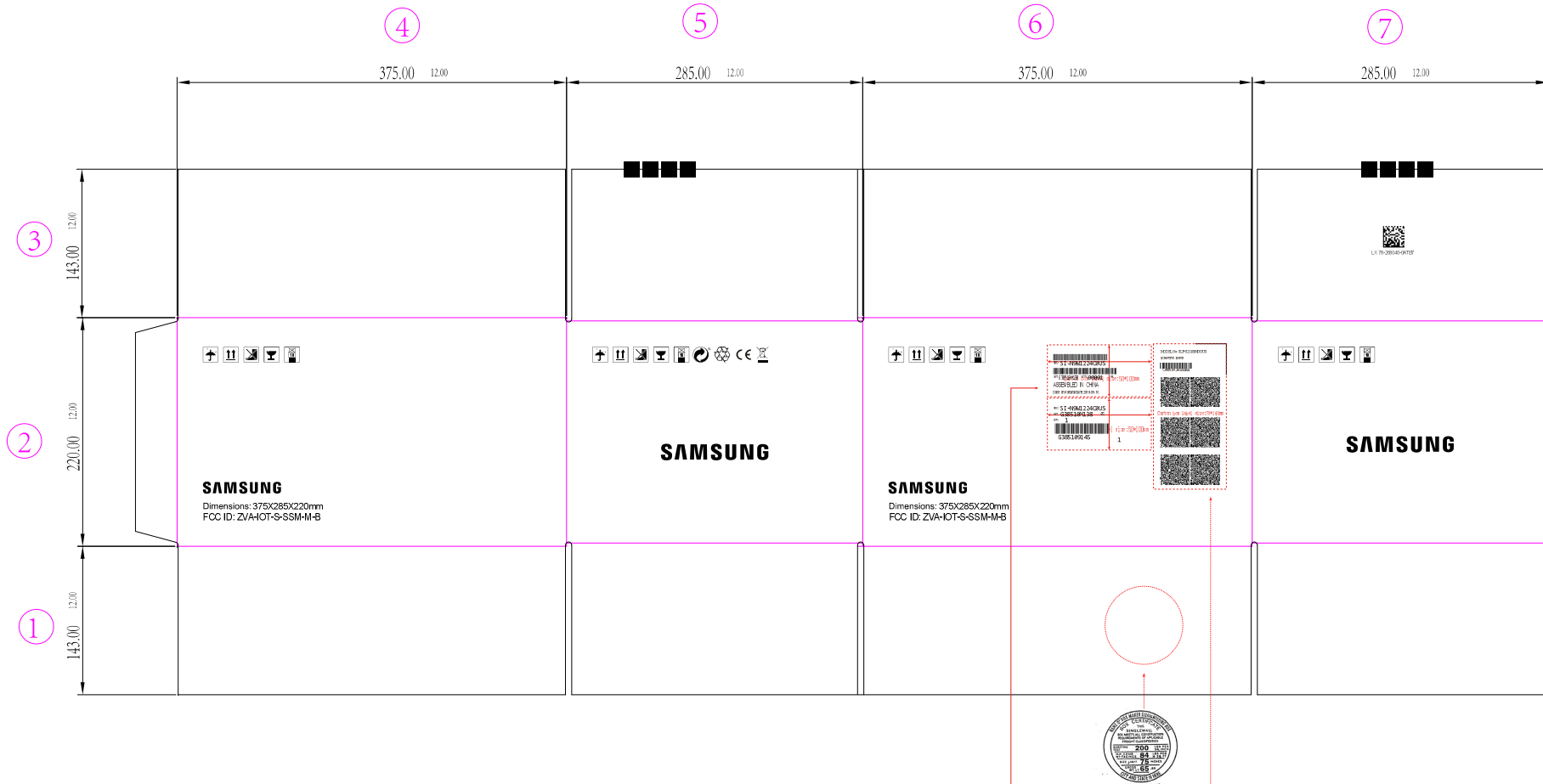
CCT(5digit): SMB01

serial(6digit): from 000000 to 999999, Every day starting from 0, it can't have same serial at the same date.

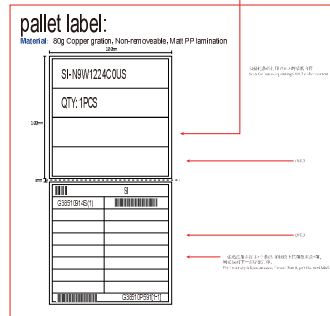
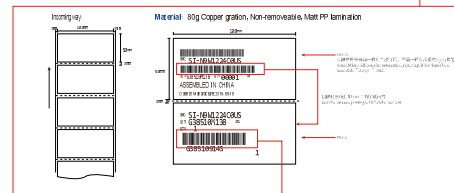
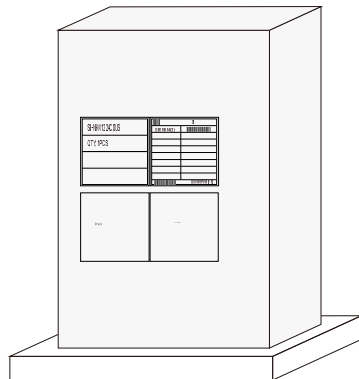
黏貼位置示意图:



Carton box



pallet label location:



For MicroSensor 中国 (SLP-S211BMOU5) 93-MICSEN-CHO

Material: 80g Copper gration, Non-removable, Matt PP lamination
Scan the content: QR code information includes all Serial number (SN) of the product in a carton box. There is a enter key between SN and SN. A QR code is 20pcs Serial number.
MODEL No: The different model has a different model number.
QUANTITY: The actual packing quantity of the carton box.
Carton number: P and Eight running numbers, as P00000001, P00000002.....

The template:
 For example: SSM4MB (MICRO SENSOR)
 MODEL No: SLP-S211BMOU5
 QUANTITY: 120PCS
 As below QR code only shows location and does not QR code's content is not reference



Dimensions : 36 x 29.5mm
Front
 190mm

SSM-M-B Smart Sensor Module SLP-S211BMOUUS

General Description

SSM (Smart Sensor Module) is a sensor module designed for smart use-cases by combining the capabilities of the Samsung SLM with key sensor modules. It provides all features of the Smart Lighting Module with advanced sensor functions such as motion detection, occupancy assessment, temperature determination, and a humidity measure.

Features

Maximum output power : 7.09dBm
 Radio Frequency : 2.4 GHz band (2.402 GHz – 2.480 GHz)

Device Security
 AES-128 Encryption with
 3-level pairing keys (Network, APP, GUID)

Antenna
 Internal Antenna

Sensor
 Temperature, Humidity, Color, PIR

Technical Specifications
 Operating : -20 ~ 50°C
 Enclosure: ABS Plastic
 Input Voltage: 12 ~ 24VDC
 Dimensions : 36 x 29.5mm

Sensor Specification

PIR Sensor (TSD3188)

Article	Specification
Spectral Response	14µm
Transmittance	75%
Sensitivity	120 µV

Temperature & Humidity Sensor (SI-7006)

Article	Specification
Operating Temperature	-20 ~ 50°C
Relative Humidity Accuracy	±6% (30°C)
Temperature Accuracy	±3°C

Color Sensor (TCS34725)

Parameter	Test Conditions	Red Channel		Green Channel		Blue Channel		Clear Channel		Unit
		Min	Max	Min	Max	Min	Max	Min	Max	
λ_c	465 nm	0%	15%	10%	42%	62%	88%	11	13.8	15.6
Irradiance responsivity	$\lambda_c = 525$ nm	4%	25%	60%	85%	10%	45%	13.2	16.6	20
	$\lambda_c = 615$ nm	80%	110%	0%	14%	5%	24%	15.6	19.5	23.4

Certification



SAMSUNG



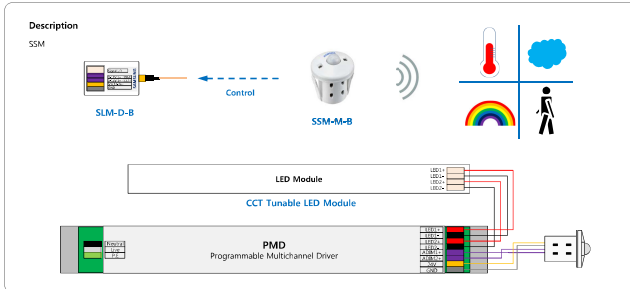
72-M1CSEN-MANB1

254mm

508mm

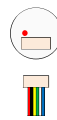
back

Operation Diagram



Connector Details

PIN	COLOR	DESCRIPTION
1	Red	12 to 24V Input
2	Black	GND
3	Yellow	CH2 0 to 10V
4	Green	CH1 0 to 10V
5	White	UART-TX
6	Blue	UART-RX



SAMSUNG

FCC

This equipment has been tested and found to comply with the limits for a Class B digital device, pursuant to part 15 of the FCC Rules. These limits are designed to provide reasonable protection against harmful interference in a residential installation. This equipment generates, uses and can radiate radio frequency energy and, if not installed and used in accordance with the instructions, may cause harmful interference to radio communications. However, there is no guarantee that interference will not occur in a particular installation. If this equipment does cause harmful interference to radio or television reception, which can be determined by turning the equipment off and on, the user is encouraged to try to correct the interference by one or more of the following measures:

- Reorient or relocate the receiving antenna.
- Increase the separation between the equipment and receiver.
- Connect the equipment into an outlet on a circuit different from that to which the receiver is connected.
- Consult the dealer or an experienced radio/TV technician for help.

This device complies with FCC radiation exposure limits set forth for an uncontrolled environment. This equipment must be installed and operated in accordance with provided instructions and the antenna(s) used for this transmitter must be installed to provide a separation distance of at least 20 cm from all persons.

This device complies with Part 15 of the FCC Rules. Operation is subject to the following two conditions:

- (1) this device may not cause harmful interference, and
- (2) this device must accept any interference received, including interference that may cause undesired operation.

Warning: Changes or modifications not expressly approved by the party responsible for compliance could void the user's authority to operate the equipment.
 NOTE: THE MANUFACTURER IS NOT RESPONSIBLE FOR ANY RADIO OR TV INTERFERENCE CAUSED BY UNAUTHORIZED MODIFICATIONS TO THIS EQUIPMENT. SUCH MODIFICATIONS COULD VOID THE USER'S AUTHORITY TO OPERATE THE EQUIPMENT.

WARNING: To prevent injury, this apparatus must be securely attached to the floor/wall in accordance with the installation instruction.

WARNING: Please refer the information on exterior bottom enclosure for electrical and safety information before installing or operating the apparatus.

1. Read these instructions.
2. Keep these instructions.
3. Read all warnings.
4. Follow all instructions.
5. Do not use this apparatus near water.
6. Clean only with dry cloth.
7. Do not block any ventilation openings. Install in accordance with the manufacturer's instructions.
8. Do not install near any heat sources such as radiators, heat registers, stoves, or other apparatus (including amplifiers) that produce heat.
9. Do not defeat the safety purpose of the polarized or grounding plug. A polarized plug has two

SAMSUNG

blades with one wider than the other. A grounding plug has two blades and a third grounding prong. The wide blade or the third prong is provided for your safety. If the provided plug does not fit into your outlet, consult an electrician for replacement of the obsolete outlet.
 10. Protect the power cord from being walked on or pinched particularly at the plugs, convenience receptacles, and at the point where they exit from the apparatus.
 11. Only use attachments/accessories specified by the manufacturer.
 12. Use only with the cart, stand, tripod, bracket, or table specified by the manufacturer, or sold with the apparatus. When a cart or stand is used, use caution when moving the cart/apparatus combination to avoid injury from tip-over.
 13. Unplug the apparatus during lightning storms or when unused for long periods of time.
 14. Refer all servicing to qualified personnel. Servicing is required when the apparatus has been damaged in any way, such as power supply cord or plug is damaged, liquid has been spilled or objects have fallen into the apparatus, has been exposed to rain or moisture, does not operate normally, or has been dropped.
 15. WARNING: To reduce the risk of fire or electric shock, do not expose this apparatus to rain or moisture. The apparatus shall not be exposed to dripping or splashing and that objects filled with liquids, such as vases, shall not be placed on apparatus.

Hereby, Samsung Electronics, declares that this equipment is in compliance with the essential requirements and other relevant provisions of Directive 2014/53/EU.
 The full text of the EU declaration of conformity is available at the following internet address: <https://www.samsung.com/lighting/lighting-platform/smart-devices/>

The Bluetooth® word mark and logos are registered trademarks owned by Bluetooth SIG, Inc. and any use of such marks by Samsung Electronics Co., Ltd. is under license, other trademarks and trade names are those of their respective owners.

190mm