

REALISTIC



STEREO BLUETOOTH® SPEAKER
4000771
User's Guide

We hope you enjoy your REALISTIC Stereo Bluetooth Speaker with True Wireless stereo sound capability. Sleek and water resistant, this speaker is also designed with a built-in mic and speakerphone so you can take calls as well as listen to music from your smartphone. Please read this user's guide before using your new speaker.

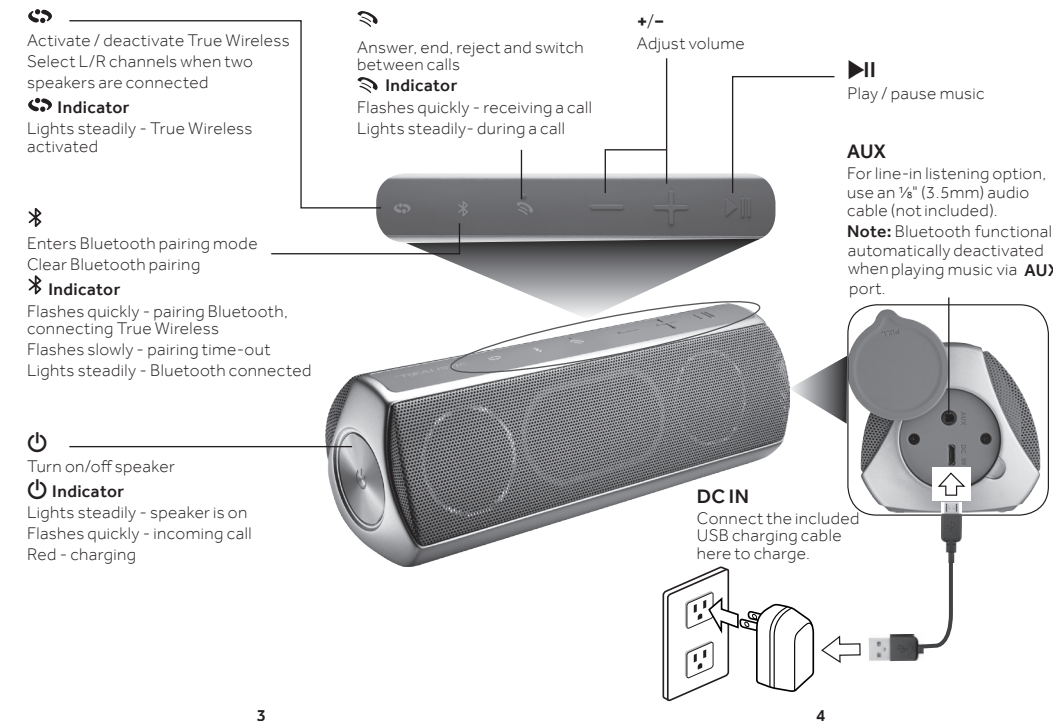
Package Contents

- Speaker
- USB Charging Cable
- User's Guide

Specifications

Battery.....Rechargeable 7.4V 2200mAh lithium polymer
Battery Charging Voltage.....DC 5V, 2A
Battery Charging Time.....approx. 4 hours
Play Time.....up to 6 hours
Frequency Response.....(speaker) 120 Hz – 20 KHz
Output Power.....10 W x 2
Impedance.....4 Ohms
Driver.....2 x 1.5 in. (38mm) neodymium
Bluetooth Protocol.....V4.2 with A2DP, AVRCP, HFP Profile
Operation Range.....33 ft. (10m)
Microphone type.....Echo cancellation
Water resistance.....IPX5
Specifications are subject to change and improvement without notice. Actual product may vary from the images found in this document.

2



3

4

Controls Overview

To...	Button	Press
Turn on/ off speaker	⏻	...and hold 2 sec
Start Bluetooth pairing	📶	...and hold 2 sec
Disconnect Bluetooth pairing		...and hold 2 sec
Volume up / down	+ / -	...quickly, or press and hold

Calls

Answer / end call	☎	×1
Reject an incoming call	☎	...and hold 2 sec
Switch to an incoming call and end the current call		

True Wireless

Activate on first speaker	🔗	×1
Activate on 2nd speaker		
Deactivate True Wireless	🔗	...and hold 2 sec
Swap left/ right channel		

Charge Your Speaker

1. Lift the cover on the side to access the jacks. Then connect the supplied charging cable to the **DC IN** jack and a USB power source.
⏻ Indicator lights red during charging and turns off when fully charged.
2. Unplug after charging, and firmly replace the cover to protect the jacks from water, dust or dirt.

5

Notes:

- You can charge the speaker and use it at the same time.
- When the battery is low, the ⏻ indicator flashes red slowly, and the speaker will eventually automatically turn off.

Lithium Battery Notes:

- Charge batteries on a fireproof surface away from flammable items or liquids. Follow the instructions for charging the speaker and do not charge longer than recommended.
- Recycle lithium batteries. Do not dispose of them in the trash. Do not burn or bury batteries. Do not puncture or crush. Do not disassemble.
- If the electrolyte in the cells should get on your skin, thoroughly wash with soap and water. If in the eyes, rinse thoroughly with cool water. Immediately seek medical attention.

Pairing a Bluetooth Device

1. Press and hold ⏻ 2 seconds to turn on the speaker. The ⏻ indicator lights.
2. Press and hold 📶 to enter pairing mode if your speaker doesn't enter automatically. The 📶 indicator flashes quickly as your speaker searches for Bluetooth devices.
3. Activate your device's Bluetooth function (refer to your device's user's guide). When your device locates **REALISTIC BTS1000**, select this from the device list. When paired, the 📶 indicator lights steadily.
4. Use the controls on your device to play music. To adjust volume, you can use the speakers +/- buttons, or those on your device.

6

Notes:

- The speaker will disconnect from Bluetooth function and power down from your device if they are too far apart, or left idle. To reconnect, move the speaker closer to the device within 5 minutes.
- The last volume setting used on the speaker is memorized after switching off.
- Music playback is paused during call functions and resumes when the call ends.

Clear Bluetooth Pairing

Your speaker automatically reconnects to the most recently paired device when switched on. If you want to change to other Bluetooth devices, or in case of problems with pairing, press and hold ⏻ and 📶 for 3 seconds. The 📶 indicator flashes quickly and the speaker starts searching for another Bluetooth device.

Multipoint Connection

This speaker is multipoint-enabled. This allows you to easily access and play music or take a call through the speaker from either one of two connected Bluetooth devices.

1. To use multipoint, make sure you pair each of your devices separately. See **Pairing a Bluetooth Device**.
2. There is no need to switch off the speaker to pair your second device. Press and hold 📶 2 seconds to start Bluetooth pairing your second device. Bluetooth status on your first device will automatically disconnect.
3. After your second device is successfully paired and connected, to enjoy multipoint, go to the Bluetooth menu on your first device to reactivate Bluetooth connection status. Both your devices are now connected.

7

Using True Wireless Mode

To play your music from your smartphone or other Bluetooth-enabled device, for best sound performance you'll need an additional REALISTIC 4000771 speaker. Conveniently, there is no need to pair the second speaker.

True Wireless Activation

Before you start activation or when using True Wireless mode, make sure of the following:

- Your first speaker is paired before you setup True Wireless mode.
- Both speakers are on and in stop mode.
- If you are using multipoint connection, you need to turn off multipoint on one of your 2 Bluetooth devices.

1. Press the 🔗 button on one speaker. The 📶 indicator flashes quickly.
2. On another speaker, press the 🔗 button, the 📶 indicator flashes quickly.
3. When True Wireless is successfully activated, the 🔗 and 📶 indicators light steadily on both your speakers.
4. To swap left/right channel sound on your two speakers, press and hold 🔗 button for 2 seconds on either speaker.
5. To exit True Wireless, press the 🔗 button on either speaker.

Notes:

- **Smart Power Off:** During True Wireless playback, press and hold ⏻ on either speaker for 2 seconds to switch off both speakers simultaneously.

8

- **Smart True Wireless:** Once activated, True Wireless is memorized by your speakers. True Wireless is the default playback mode when you next switch on the two speakers.
- **Troubleshooting TW Activation:** In case of difficulty activating, turn off each speaker. Then switch the first speaker on again, followed by the second speaker, and start playing a song. Wait a few seconds to hear if True Wireless has been activated. If not, repeat **True Wireless Activation** and complete steps 1-3 above within 3 minutes.

Resetting the Speaker

In case the speaker's buttons are not functioning properly during operation, press and hold + and - at the same time for 5 seconds to reset and switch off the speaker. Any previous TW activation will not be lost.

FCC Information

This equipment has been tested and found to comply with the limits for a Class B digital device, pursuant to Part 15 of the FCC Rules. These limits are designed to provide reasonable protection against harmful interference in a residential installation. This equipment generates, uses, and can radiate radio frequency energy and, if not installed and used in accordance with the instructions, may cause harmful interference to radio communications. However, there is no guarantee that interference will not occur in a particular installation. If this equipment does cause harmful interference to radio or television reception, which can be determined by turning the equipment off and on, the user is encouraged to try to correct the interference by one or more of the following measures:

- Reorient or relocate the receiving antenna.
- Increase the separation between the equipment and receiver.
- Connect the equipment into an outlet on a circuit different from that to which the receiver is connected.

9

- Consult your dealer or an experienced radio/TV technician for help.
- Changes or modifications not expressly approved by the party responsible for compliance could void the user's authority to operate the equipment.
- This device complies with Part 15 of the FCC Rules. Operation is subject to the following two conditions:
- (1) this device may not cause harmful interference, and
 - (2) this device must accept any interference received, including interference that may cause undesired operation.

Limited Warranty

Go to www.radioshack.com/help for details.
RadioShack Customer Relations
300 RadioShack Circle, Fort Worth, TX 76102

The Bluetooth® word mark and logos are owned by Bluetooth SIG, Inc. and any use of such marks by General Wireless Operations Inc. is under license.

RoHS Complies with the European Union's "Restriction of Hazardous Substances Directive," which protects the environment by restricting specific hazardous materials and products.

www.radioshack.com

© 2016 General Wireless Operations Inc. All rights reserved. REALISTIC is a registered trademark used by General Wireless Operations Inc. dba RadioShack.

06A16
4000771
Printed
in China

10