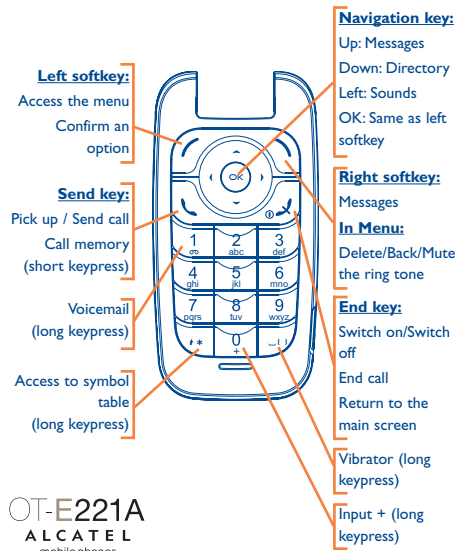


1 Your mobile

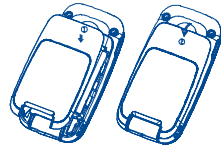
Keys in idle mode



OT-E221A
ALCATEL
mobile phones

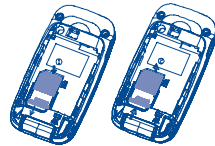
2 Getting started

2.1 Remove the back cover



2.2 Insert the SIM Card

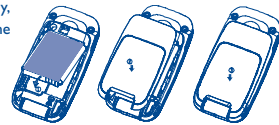
Inserting the SIM card in order to use your phone. To insert your SIM card, turn off your phone by holding down the key.



Fit the SIM card with the chip (indicated by the gold connectors) facing downwards. Slide the SIM card into its compartment taking care of the correct orientation with the angled corner. Push the SIM card with your finger to release it.

2.3 Insert and remove the battery

To remove the battery, make the same thing in the other direction.



3 Menu.....

Select the item you require using the navigation keys (, ,

Safety and use

We recommend that you read this chapter carefully before using your cellphone.The manufacturer disclaims any liability for damage, which may result as a consequence of improper use or use contrary to the instructions contained in this manual.

• **TRAFFIC SAFETY:**

Given that studies, which show that using a cellphone while driving a vehicle constitutes a real risk, even when the hands-free kit is used (headset...), drivers are requested to refrain from using their cellphone when the vehicle is not parked

When switched on, your cellphone emits electromagnetic waves that can interfere with the vehicle's electronic systems such as ABS anti-lock brakes or airbags. To ensure that there is no problem:

- do not place your cellphone on top of the dashboard or within an airbag deployment area.

- check with your dealer or car manufacturer to make sure that the car's electronics devices are well shielded.

• **CONDITIONS OF USE:**

Your are advised to switch off your cellphone from time to time to optimise performance.

Switch the cellphone off before boarding.

Switch the cellphone off when you are in health care facilities, except in designated areas. As with many other types of equipment now in regular use, cellphones can interfere with other electrical or electronic devices, or equipment using radio frequency.

Switch the cellphone off when you are near gas or flammable liquids. Strictly obey all signs and instructions posted in a fuel depot, gas station, or chemical plant, or in any potentially explosive atmosphere.

When the cellphone is switched on,it should be kept at least 15 cm from any medical device such as a pacemaker, a hearing aid or insulin pump.When using the cellphone you should hold it against the ear on the opposite side to the device, if any.

To avoid hearing impairment,pick up the call before holding your cellphone to your ear.Also move the handset away from your ear while using the "hands-free" option because the amplified volume might cause hearing damage.

Do not let small children use the cellphone without supervision.

When replacing the cover please note that your cellphone may contain substances that could create an allergic reaction.

Always handle your cellphone with care and keep it in a clean and dust-free place. Do not allow your cellphone to be exposed to unfavourable environmental conditions (moisture, humidity, rain, infiltration of liquids, dust, sea air, etc). The manufacturer's recommended operating temperature range is -20°C to +55°C.Over 55°C the legibility of the cellphone's display may be impaired, though this is temporary and not serious.

Emergency call numbers may not be reachable on all cellular networks.You should never rely only on your cellphone for emergency calls.

Do not open, dismantle or attempt to repair your cellphone yourself.

Do not drop, throw or try to bend your cellphone.

Do not paint it.

Use only Alcatel batteries, battery chargers, and accessories that are compatible with your cellphone model. T&A Mobile Phones Limited or its affiliates disclaim any liability for damage caused by the use of other batteries.

Your cellphone should not be disposed of in a municipal dump. Please check local regulations for disposal of electronic products.

Remember to make back-up copies or keep a written record of all important information stored in your cellphone.

Some people may suffer epileptic seizures or blackouts when exposed to flashing lights, or when playing video games.These seizures or blackouts may occur even if a person never had a previous seizure or blackout.If you have experienced seizures or blackouts, or if you have a family history of such occurrences, please consult your doctor before playing videos games on your cellphone or enabling a flashing-lights feature on your cellphone. Parents should monitor their children's use of video games or other features that incorporate flashing lights on the cellphones. All persons should discontinue use and consult a doctor if any of the following symptoms occur: convulsion, eye or muscle twitching, loss of awareness, involuntary movements, or disorientation.To limit the likelihood of such symptoms, please take the following safety precautions:

- Do not play or use a flashing-lights feature if you are tired or need sleep.

- Take a minimum of a 15- minute break hourly.

- Play in a room in which all lights are on.

- Play at the farthest distance possible from the screen.

- If your hands, wrists, or arms become tired or sore while playing, stop and rest for several hours before playing again.

- If you continue to have sore hands, wrists, or arms during or after playing, stop the game and see a doctor.

When you play games on your cellphone, you may experience occasional discomfort in your hands, arms, shoulders, neck, or other parts of your body. Follow the instructions to avoid problems such as tendonitis, carpal tunnel syndrome, or other musculoskeletal disorders.



This symbol on your telephone, the battery and the accessories means that these products must be taken to collection points at the end of their life:

- Municipal waste disposal centres with specific bins for these items of equipment
- Collection bins at points of sale.

They will then be recycled, preventing substances being disposed of in the environment, so that their components can be reused.

In European Union countries:

These collection points are accessible free of charge.All products with this sign must be brought to these collection points.

In non European Union countries:

Items of equipment with this symbol are not be thrown into ordinary bins if your country or your region has suitable recycling and collection facilities;instead they are to be taken to collection points for them to be recycled.

• **PRIVACY:**

Please note that you must respect the laws and regulations in force in your country regarding taking photographs and recording sounds with your mobile telephone. Pursuant to such laws and regulations, it may be strictly forbidden to take photographs and/or to record the voices of other people or any of their personal attributes, and duplicate or distribute them, as this may be considered to be an invasion of privacy. It is the user's sole responsibility to ensure that prior authorization be obtained, if necessary, in order to record private or confidential conversations or take a photograph of another person; the manufacturer, the seller or vendor of your mobile phone (including the operator) disclaim any liability which may result from the improper use of the mobile phone.

• **BATTERY:**

Before removing the battery from your cellphone, please make sure that the telephone is switched off.

Take precautions with the battery and do not attempt to open the battery (chemical substances may cause burns).

Do not pierce, disassemble nor cause a short-circuit in a battery.

Do not burn or dispose of a used battery in household waste or store it at temperatures above 60 °C.

Batteries must be disposed of in accordance with locally applicable environmental legislation.

Batteries should not be used for any other purpose than the one intended. Never use damaged batteries or not recommended by T&A Mobile Phones Limited and/or its affiliates.

• **CHARGERS:**

Mains powered chargers will operate within the temperature range of: 0 °C to 40 °C.The chargers designed for your mobile phone meet with the standard for safety of information technology equipment and office equipment use.They should be used for this purpose only.

The charger in this package shall ONLY be used with Alcatel OT-E221A/OT-E227A. The use on any other product or equipment including Alcatel products is strictly prohibited.

T&A Mobile Phones Limited cannot be held liable for any damages due to use contrary to the above mentioned stipulation.

Electrical characteristic of power supply (depending on the country):

110V charger (used in Mexico):

Input: 100-127 V, 50/60 Hz, 0,30 A

Output: 4.5 V, 350 mA

220V charger:

Input: 220-240 V, 50/60 Hz, 0,30 A

Output: 4.5 V, 350 mA

Battery: Lithium 650 mAh

• **RADIO WAVES:**

THIS CELLPHONE MEETS THE GOVERNMENT'S REQUIREMENTS FOR EXPOSURE TO RADIO WAVES.

Your cellphone is a radio transmitter and receiver. It is designed and manufactured not to exceed the emission limits for exposure to radio-frequency (RF) energy.These limits are part of comprehensive guidelines and establish permitted levels of RF energy for the general population. The guidelines are based on standards that were developed by independent scientific organizations through periodic and thorough evaluation of scientific studies. These guidelines include a substantial safety margin designed to ensure the safety of all persons, regardless of age and health.

The exposure standard for cellphones employs a unit of measurement known as the Specific Absorption Rate, or SAR. The SAR limit set by public authorities such as the Federal Communications Commission of the US Government (FCC) or by Industry Canada, is 1.6 W/kg averaged over 1 gram of body tissue. Tests for SAR are conducted using standard operating positions with the cellphone transmitting at its highest certified power level in all tested frequency bands.

Although the SAR is determined at the highest certified power level, the actual SAR level of the cellphone while operating can be well below the maximum value. This is because the cellphone is designed to operate at multiple power levels so as to use only the power required to reach the network. In general, the closer you are to a wireless base station antenna, the lower the power output of the cellphone. Before a cellphone model is available for sale to the public, compliance with national regulations and standards must be shown.

13	14	15	16	17	18
----	----	----	----	----	----

Telephone warranty

Congratulations on choosing this mobile phone - we hope that you will be completely satisfied with it.

Your phone is guaranteed against any deviation from technical specifications for a period of twelve (12) months from the date specified on your original invoice ⁽¹⁾. The warranty terms defined in the manual also apply to the battery and accessories sold with the phone but for a period of six (6) months ⁽²⁾ from the date of purchase shown on your original invoice.

Under the terms of this warranty, you must immediately inform your vendor (or any repair centre approved by T&A Mobile Phones Limited or its affiliates, which are listed on our website http://www.tctmobile.com) in case of a conformity defect on your phone, and present the invoice given to you at the time of purchase.The vendor or maintenance centre will decide whether to replace or repair; as appropriate, all or any part of the telephone or accessory found to be defective; this warranty covers the cost of parts and labour but excludes any other costs. Repair or replacement may be carried out using reconditioned components offering equivalent functionality. Servicing under the terms of this warranty, especially repair, modification or replacement of products, shall entitle to a ONE (1) month ⁽³⁾ warranty unless there are statutory provisions to the contrary.

This warranty shall not apply to damage or defects to your telephone and/or accessory caused by:

- 1) failure to follow the instructions for use or installation,
- 2) failure to comply with technical and safety standards applicable in the geographical area where the equipment is used,

- 3) improper maintenance of batteries and other sources of energy, and of the overall electric installation,
- 4) accidents or consequences of theft of the vehicle in which the telephone is transported, acts of vandalism, lightning, fire, humidity, infiltration of liquids, inclement weather,
- 5) connecting or integrating the phone into equipment not supplied or not recommended by T&A Mobile Phones Limited or its affiliates, without their express written consent for such..
- 6) any servicing,modification or repair performed by individuals not authorised by T&A Mobile Phones Limited or its affiliates, the vendor or the approved maintenance centre,
- 7) use of the equipment for a purpose other than that for which it was designed,
- 8) normal wear,
- 9) malfunctions caused by external causes (e.g., radio interference from other equipment, power or telephone line voltage fluctuations),
- 10) modifications made to the equipment even if required by changes in regulations and/or modification of network parameters,
- 11) faulty connections resulting from unsatisfactory radio transmission or caused by the absence of radio relay coverage.
- 12) equipment on which markings or serial numbers have been removed or altered, and handsets on which labels have been removed or deteriorated shall be excluded from the warranty.


In accordance with the applicable law, your product is warranted against hidden defects (defects inherent in the design, manufacture, etc.).

There are no express warranties, whether written or oral, other than this printed limited warranty, express or implied, of any nature whatsoever.

In no event shall T&A Mobile Phones Limited or its affiliates be liable for incidental or consequential damages of any nature whatsoever, including but not limited to trading loss, commercial loss, to the full extent those damages can be disclaimed by law. Some countries/states do not allow the exclusion or limitation of incidental or consequential damages, or limitation of the duration of implied warranties, so the preceding limitations or exclusions may not apply to you.


Troubleshooting.....

Before contacting the aftersales department, you are advised to follow the instructions below:


- You are advised to switch off the telephone from time to time to optimise its performance.
- You are advised to fully charge the battery () for optimal operation.
- Avoid storing large amounts of data in your telephone as this may affect the performance of your telephone.

and carry out the following checks:

My mobile phone does not switch on

- Press  until the screen comes on
- Check the battery charge level
- Check the battery contacts, remove and reinstall your battery, then turn your telephone back on

My phone does not respond since several minutes

- Press the  key
- Remove the battery and re-insert it, then switch the phone back on

My screen is difficult to read

- Clean your screen
- Use your mobile phone in accordance with the recommended conditions of use

My mobile phone turns off by itself

- Check that your keypad is locked when you are not using your mobile phone
- Check the battery charge level
- Check that the function "**Auto OFF**" is not activated.

The highest SAR value for this cellphone when tested is 0.97W/kg for use at the ear and 0.38 W/kg for use close to the body.

While there may be differences between the SAR levels of various cellphones and at various positions, they all meet the government requirement for RF exposure. For body-worn operation, the cellphone meets FCC RF exposure guidelines provided that it is used with a non-metallic accessory with the handset at least 2 cm from the body. Use of other accessories may not ensure compliance with FCC RF exposure guidelines.

The World Health Organization (WHO) considers that present scientific information does not indicate the need for any special precautions for use of cellphones. If individuals are concerned, they might choose to limit their own or their children's RF exposure by limiting the length of calls, or using "hands-free" devices to keep cellphones away from the head and body (fact sheet n°193).Additional WHO information about electromagnetic fields and public health are available on the following website: http://www.who.int/peh-emf.

Your telephone is equipped with a built-in antenna. For optimal operation, you should avoid touching it or degrading it.


General information

- **Website:** www.tctmobile.com

- **Hot Line Number:** see the "TCL & Alcatel Mobile Phones Services" leaflet or go to our Internet site.

On our Internet site, you will find our FAQ (Frequently Asked Questions) section. You can also contact us by e-mail to ask any questions you may have.

Your telephone is a transceiver that operates on PCS networks with 850 and 1900 MHz bands.

The  marking indicates that your telephone complies with "1999/5/EC (R&TTE)" directive and that the accessories concerned comply with current EC directives.The entire copy of the Declaration of Conformity for your telephone can be obtained through our website: www.tctmobile.com.

Protection against theft ⁽¹⁾

Your telephone is identified by an IMEI (phone serial number) shown on the packaging label and in the product's memory.We recommend that you note the number the first time you use your telephone by entering *,#, 0, 6, # and keep it in a safe place. It may be requested by the police or your operator if your telephone is stolen.This number allows your mobile telephone to be blocked preventing a third person from using it, even with a different SIM card.

Disclaimer

There may be certain differences between the user manual description and the phone's operation, depending on the software release of your telephone or specific operator services.

T9 Text Input is licensed under one or more of the following: U.S. Pat. Nos. 5,187,480, 5,818,437, 5,945,928, 5,953,541, 6,011,554, 6,286,064, 6,307,548, 6,307,549, and 6,636,162, 6,646,573; European Pat. Nos. 0 842 463 (96927260.8), 1 010 057 (98903671.0), 1 018 069 (98950708.2); and additional patents are pending worldwide

Text Input

TEXT INPUT

T9

TEXT INPUT

⁽¹⁾ Contact your network operator for service availability.

Unable to receive incoming calls

- Make sure your mobile phone is switched on and connected to a network (check for overloaded or unavailable network)
- Check your subscription with your operator (credit, SIM card valid, etc.)
- Make sure you have not forwarded incoming calls
- Make sure that you have not barred certain calls

The caller's name does not appear when a call is received

- Check that you have subscribed to this service with your operator
- Your caller has concealed his/her number

The sound quality of the calls is not optimal

- You can adjust the volume during a call by means of the  key
- Check the radio reception icon 

I am unable to use the features described in the manual

- Check with your operator to make sure that your subscription includes this service

- Check to be sure this feature does not require an Alcatel accessory.

When I select a number from my directory, the number is not dialled

- Make sure that you have correctly recorded the number in your file
- Make sure that you have selected the country prefix when calling a foreign country

^[1] The mandatory period may vary if overriding statutory provisions are applicable in your country.

^[2] The life of a rechargeable Alcatel telephone battery in terms of conversation time, standby time, and total service life, will depend on the conditions of use and network configuration. Batteries being considered expendable supplies, the specifications state that you should obtain optimal performance for your Alcatel phone during the first six months after purchase and for approximately 200 more recharges.