

## **1 About WIRELESS USB MODEM**

---

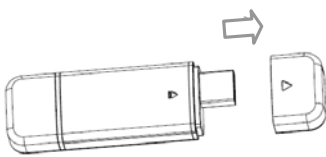
WIRELESS USB MODEM is a kind of Internet equipment customized for mobile working and entertainment, which allows the user connect to Internet conveniently.

## **2 Installation**

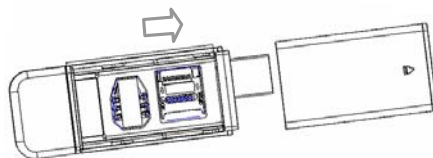
---

### **Insert (U)SIM card**

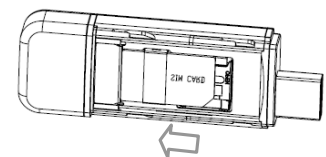
1. Open USB cover;
2. Remove product cover;
3. Correctly insert (U)SIM into the slot according to direction shown in figure, and confirm that (U)SIM has been inserted completely.



(1)



(2)

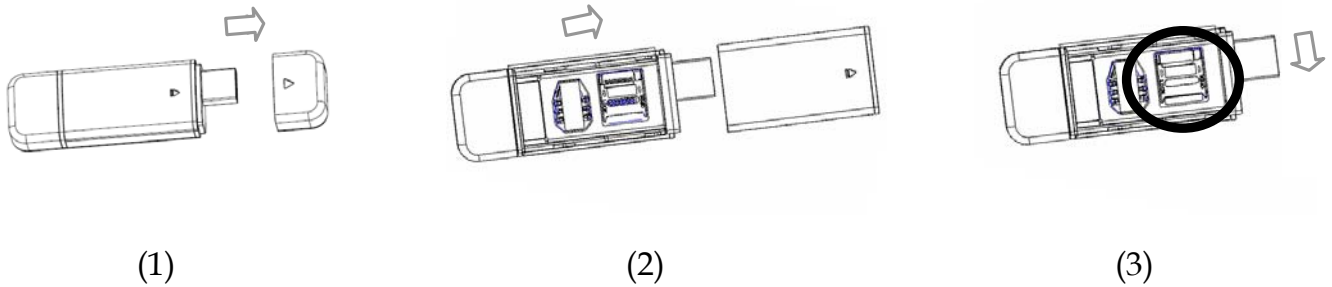


(3)

### **Insert T-flash card**

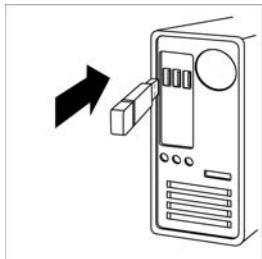
1. Open USB cover;
2. Remove product cover;
3. Push T-flash card slot and pull out with narrow indicator. Then insert T-flash card into the slot according to direction shown in figure, and confirm that T-flash card has been inserted completely.

Note: T-flash slot is placed under the (U)SIM slot. Before inserting T-Flash card, (U)SIM card should be removed, if present.



## Connect WIRELESS USB MODEM to PC

1. Insert the MODEM into a USB port of computer, to achieve USB power supply of MODEM.



2. Installation program should run automatically after the MODEM inserted into the computer correctly; in case of failure of automatic run, please open MODEM memory via Icon of My Computer in Windows OS, and double click it to begin installing. Do not disconnect the MODEM during installation;

3. Program should run automatically if installation is completed.

## 3 Connect to Internet

---

### Establish connection

1. Clicking  on main interface to connect Internet, of which operation change  to ;

2. Internet connection is established successfully if connection information window ejects.

Please check APN setting if connection failed. (Refer to the section of custom connection in Help.)

### Disconnect

Click  on main interface to disconnect Internet.

## 4 Indicator light

---

State of indicator light	Description		
Twist in multicolour circularly	Network searching		
Twist in red slowly	Abnormity of (U)SIM card		
Twist slowly	Internet is connected		
Luminous continuously	Data transmitting		
Green	HSPA	-	-
Blue	UMTS	-	-
Purple	-	EDGE	
Yellow			GPRS

## 5 Attention

---

1. Please confirm whether the number of short message centre is correct in case that short message is sent unsuccessfully.
2. Please check whether your (U)SIM card is fully used in case that no message is received successfully.
3. Naturally heat under long-time working, weak signals or high indoor temperature. Avoid touching it directly in body for a long time.
4. As the user is using it, the minimum distance to the MODEM is 20cm.
5. For Mac OS will provide Internet Connect only.

## 6 Remark

---

For Mac OS or more detailed information, please click “Help” in Setting Menu.

## **FCC Regulations:**

● This device complies with part 15 of the FCC Rules. Operation is subject to the following two conditions: (1) This device may not cause harmful interference, and (2) this device must accept any interference received, including interference that may cause undesired operation.

● This device has been tested and found to comply with the limits for a Class B digital device, pursuant to Part 15 of the FCC Rules. These limits are designed to provide reasonable protection against harmful interference in a residential installation. This equipment generates, uses and can radiated radio frequency energy and, if not installed and used in accordance with the instructions, may cause harmful interference to radio communications. However, there is no guarantee that interference will not occur in a particular installation. If this equipment does cause harmful interference to radio or television reception, which can be determined by turning the equipment off and on, the user is encouraged to try to correct the interference by one or more of the following measures:

- Reorient or relocate the receiving antenna.
- Increase the separation between the equipment and receiver.
- Connect the equipment into an outlet on a circuit different from that to which the receiver is connected.
- Consult the dealer or an experienced radio/TV technician for help.

Changes or modifications not expressly approved by the party responsible for compliance could void the user's authority to operate the equipment.

● This device complies with FCC radiation exposure limits set forth for an uncontrolled environment. In order to avoid the possibility of exceeding the FCC radio frequency exposure limits, human proximity to the antenna shall not be less than 20cm (8 inches) during normal operation.