

# Your cellphone.....



- 1.1 Keys**
- Navigation key
    - Confirm an option (press the middle of the key)
    - Access to menu (short keypress)
    - Show/hide shortlist menu(long keypress)
  - Answer
    - Send a call
    - Access call memory (short keypress)
    - Access to Fake call (long keypress)
  - Switch on/Switch off the cellphone (long keypress)
  - End call
  - Return to the idle screen
  - Left softkey
  - Right softkey
  - Access your voicemail (long keypress)
  - Input the "#" in Idle.
  - Side key in idle screen
    - Short Push : Show/hide shortlist menu
    - Create SMS (HSSA)
    - Long push: access to "PTT" (if supported)
  - In idle screen:
    - Long/short keypress: Lock/Unlock the keypad
  - In edit mode:
    - Short keypress: input space
    - Long keypress: switch language
    - Fn key + Space: switch input mode

<sup>(1)</sup> Depending on your network operator.

OT-255A  
ALCATEL  
mobile phones

## 5.1.2 Inbox

All received messages (read and unread) are stored in the same Inbox.

### Group by sender/Group by receiver<sup>(1)</sup>

Messages can be grouped by sender/receiver ("Options/Group by sender"/"Options/Group by receiver"). And you are enabled to quick search the messages by pressing the key associated with the first letter of sender/receiver's name.

### Group unread message

Unread messages will always be positioned above the read messages.

## 5.2 SMS Conversation (chat)<sup>(2)</sup>

Access to "Options" and select "Settings/SMS Chat mode", keep the conversation going in real time using SMS chat. You may separate chat for every contact with whom you exchange short text messages.

# 6 Directory .....

## 6.1 Consulting your directory

To access the **Directory** from the main screen, press the key and select the icon.

## 6.2 Adding a contact

Select the contacts list in which you wish to add a contact to, press the "Options" softkey, select "Add contact" then Save .

<sup>(1)</sup> The option of Group by receiver is available in Outbox, Sent, and Draft folders only.

<sup>(2)</sup> Depending on your network operator.

# 7 Fake Call .....

Protect yourself from annoying situations with the "Fake Call". In this menu, you can set "Caller's name", "Call time" and "Ringtone".

When the timer reaches, the cellphone will ring and display like receiving a real cellphone call. Press key, pretend answering a call, the screen will display just like have an ongoing call. Press key, pretend to reject the call, the call will terminate automatically.

# 8 Radio .....

Your cellphone is equipped with a Radio<sup>(1)</sup> with RDS functionality. You can use the application as a traditional Radio with saved channels or with parallel visual information related to the radio program on the display, if you tune to stations that offer Visual Radio service. You can listen to it while running other applications.

# 9 Internet.....

**9.1 Email<sup>(2)</sup>**.....  
Your cellphone has an email client with the settings predefined for a few popular email services like – GoogleMail, Windows live, Yahoo, AOL, etc.

**9.2 WAP** .....

Access Web options: **Homepage, Bookmarks, Go to URL, Last web address, Recent pages, Offline pages, Alert inbox.**

<sup>(1)</sup> The quality of the radio depends on the coverage of the radio station in that particular area.

<sup>(2)</sup> HTML email and image in email not supported.

- 1.2 Main screen icons<sup>(1)</sup>**
- Battery charge level**
    - Vibrate alert:** Your cellphone vibrates, but does not ring or beep with the exception of the alarm.
  - Headset connected.**
  - Keypad locked.**
  - Call forwarding activated:** your calls are forwarded.

<sup>(1)</sup> The icons and illustrations in this guide are provided for informational purposes only.

# 9.3 Weather<sup>(1)</sup> .....

Your cellphone is equipped with a weather function for consulting up to 3-day forecast of favorite cities.

# 10 ICE .....

ICE (in case of emergency) are 3 numbers emergency services can call if you have an accident, you can also add useful information such as blood type, allergy. Access to "ICE" menu from main menu and below options are available: View, Add/Edit, Delete.

# 11 Games.....

Your cellphones includes some games. Select "Game settings", it allows you to manage settings, in which you may set background audio and vibration alert.

# 12 Profiles.....

With this menu, you may personalize ringtones for different events and environments.

# 13 Media album.....

You will have an access to all audio and visual files stored in cellphone or in Medium Album. You can access a number of items with this option: **My audios, My images, My creations, Unknown files and Memory status.**

<sup>(1)</sup> Depending on your network operator. May cause additional network charges for data flow to provide this service. Extra fees might also be charged in roaming status.

- Alarm clock.**
- Level of network reception.**
- Voicemail message arrived.**
- Missed calls.**
- Radio is on.**
- Stopwatch is active.**
- WAP alerts<sup>(1)</sup>.**
- Roaming.**
- Line switching<sup>(2)</sup>:** indicates the selected line.
- GPRS connection status (Blue - Activated).**
- GPRS attached.**
- GPRS connecting.**
- Message receipt in progress.**
- Sending a message.**
- Silence mode:** your cellphone neither rings, beeps nor vibrates except for the alarms.
- Message unread.**
- Message list is full:** your terminal cannot accept any new messages. You must access the message list and delete at least one message on your SIM card.
- Flight mode.**

<sup>(1)</sup> Depending on your network operator.  
<sup>(2)</sup> Contact your network operator to check service availability.

# 14 Services.....

Contact your network operator to check service availability.

# 15 Others.....

**15.1 Calendar** .....

Once you enter this menu from main menu, there is a monthly-view calendar for you to keep track of important meetings, appointments, etc. Days with events entered will be marked in color.

**15.2 Calculator** .....

Access this feature by selecting "Calculator" from the main menu. Enter a number, select the type of operation to be performed using the navigation keys, and enter the second number, then press key or left softkey to display the result.

**15.3 Notes**.....

You can create a note in text or voice format by accessing "Notes" from main menu.

**15.4 Tasks** .....

Enables you to easily manage and track the progress of an task with priorities. All the tasks will be sorted by due date.

**15.5 Clock** .....

**15.5.1 Alarm**

Your cellphone has a built-in alarm clock with a snooze feature.

**15.5.2 Clock**

Allows you to have settings of date and time, including 12/24h format.

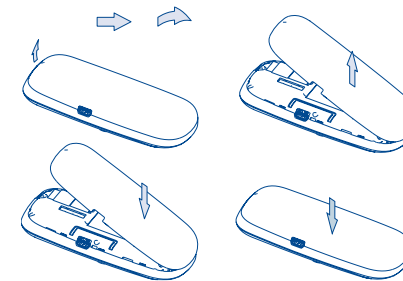
**15.5.3 World clock**

The World clock shows current local time and the time zone in different cities.

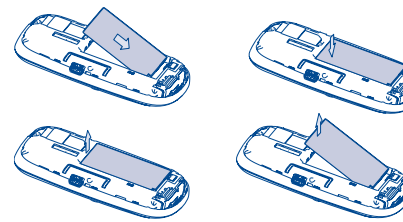
# 2 Getting started .....

## 2.1 Set-up

### Removing or installing the back cover



### Installing or removing the battery



<sup>(1)</sup> Depending on your network operator.  
<sup>(2)</sup> Contact your network operator to check service availability.

# 15.4.4 Stopwatch

The stopwatch is a simple application for measuring time with the possibility to register several results and suspend/resume measurement.

## 15.6 Converter .....

Unit converter and Currency converter.

# 16 Settings.....

From the main menu, select the menu icon and select the function of your choice in order to customize your cellphone: Display, Languages, Headset mode, Input mode, Vocabulary, Keypad, Security, Network, Connectivity, Restore default set, Call settings.

## 16.1 Keys

You may set the keypad to which you prefer to. Fn + Keys: you may define the combined Fn key function and to get shortcuts with below options: Edit/Add/Delete .

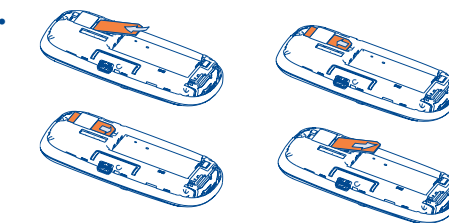
## 16.2 Call settings

Type in or modify your cellphone number or the number to access your voicemail and confirm by pressing . Your cellphone number is usually written on your SIM card.

### Billings

You can access different items with this option: **Amount, Duration, GPRS counter, Beep duration.**

## Inserting or removing the SIM card



Place the SIM card with the chip facing downwards and slide it into its housing. Make sure that it is correctly inserted. To remove the card, press the bottom and slide it out. Please power off your cellphone before you remove the SIM card.

## 2.2 Power on your cellphone

Hold down the key until the cellphone powers on.

## 2.3 Power off your cellphone

Hold down the key from the main screen.

# 3 Calls.....

## 3.1 Making a call

Dial the desired number then press the key to place the call. If you make a mistake, you can delete the incorrect digits by pressing the right softkey or key.

To hang up the call, press the key.

### Making an emergency call

If your cellphone has network coverage, dial emergency number and press the key to make an emergency call. This works even without a SIM card and without typing the PIN code or unlocking the keypad.

# 17 Latin input mode.....

To write messages, there are two writing methods:

- Normal: this mode allows you to type a text by choosing a letter or a sequence of characters associated with a key.

- Predictive with the Zi mode: This mode speeds up the writing of your text.

Fn key : Press once: input top-half character, Press twice: lock top-half character inputting mode, then press once to unlock top-half character inputting mode.

Long press: access to Dictionary

Sym key : Short keypress: access the Symbols table  
Long keypress & Fn + Sym: popup smileys page

Space key: Short press: input space  
Long press: press to switch language  
Fn+Space: switch input mode

Shift key : In abc (Multitapabc) input mode (no Abc mode):  
Short press once: only switch one character from minuscule to uppercase

Short press twice: lock uppercase input mode  
Short press once: unlock the uppercase

In eZiabc (Smartabc) input mode:  
Short press once: to eZi Abc  
Short press twice: to eZi ABC

Del key : Short keypress: delete one by one.  
Long keypress: delete one by one quickly.

Del key : Short keypress: delete one by one.  
Long keypress: delete one by one quickly.

## 3.2 Call memory

You can access your call memory by pressing the key from the main screen. Check "Outgoing calls", "Missed calls", "Answered calls".

# 4 Menu arrange.....

Main Menu is designed to vary according to your preference.

### Change the order

From main menu, press left softkey and select "Move" or long keypress key till tick "M" is shown, then move the cursor to your favorite destination and confirm with key.

### Show/Hide

Access "Menu arrange", press key till tick "(V)" show or off, it will show/hide some main menu.

# 5 Messages.....

## 5.1 Messages: Text/Multimedia message

### 5.1.1 Create message

From the main menu select "Messages" to create text/multimedia message.

An SMS will be converted to MMS automatically when images, videos, audios, slides, attachments inserted, Subject, CC/BCC/email address added, or the message contains more than 8 pages of text.

ALCATEL is a trademark of Alcatel-Lucent and is used under license by TCT Mobile Limited.  
  
All rights reserved © Copyright 2010 TCT Mobile Limited.  
  
TCT Mobile Limited reserves the right to alter material or technical specification without prior notice.

Prolonged exposure to music at full volume on the music player may damage the listener's hearing. Set your cellphone volume safely. Use only headphones recommended by TCT Mobile Limited and its affiliates.

## Safety and use.....

We recommend that you read this chapter carefully before using your cellphone. The manufacturer disclaims any liability for damage, which may result as a consequence of improper use or use contrary to the instructions contained herein.

### • TRAFFIC SAFETY:

Given that studies show that using a cellphone while driving a vehicle constitutes a real risk, even when the hands-free kit is used (car kit, headset...), drivers are requested to refrain from using their cellphone when the vehicle is not parked. Check the laws and regulations on the use of wireless cellphones and their accessories in the areas where you drive. Always obey them. The use of these devices may be prohibited or restricted in certain areas.

When driving, do not use your cellphone and headphone to listen to music or to the radio. Using a headphone can be dangerous and forbidden in some areas.

When switched on, your cellphone emits electromagnetic waves that can interfere with the vehicle's electronic systems such as ABS anti-lock brakes or airbags. To ensure that there is no problem:

- do not place your cellphone on top of the dashboard or within an airbag deployment area,
- check with your car dealer or the car manufacturer to make sure that the car's electronic devices are shielded from cellphone RF energy.

### • CONDITIONS OF USE:

You are advised to switch off the cellphone from time to time to optimize its performance.

Switch the cellphone off before boarding an aircraft to avoid prosecution.

Switch the cellphone off when you are in health care facilities, except in designated areas. As with many other types of equipment now in regular use, cellphones can interfere with other electrical or electronic devices, or equipment using radio frequency.

Switch the cellphone off when you are near gas or flammable liquids. Strictly obey all signs and instructions posted in a fuel depot, gas station, or chemical plant, or in any potentially explosive atmosphere.

When the cellphone is switched on, it should be kept at least 15 cm from any medical device such as a pacemaker, a hearing aid or insulin pump. In particular when using the cellphone you should hold it against the ear on the opposite side to the device, if any.

To avoid hearing impairment, answer the call before holding your cellphone to your ear. Also move the handset away from your ear while using the "hands-free" option because the amplified volume might cause hearing damage.


Do not let children use the cellphone and/or play with the cellphone and accessories without supervision.

When replacing the cover please note that your cellphone may contain substances that could create an allergic reaction.

15


## Troubleshooting.....

Before contacting the aftersales department, you are advised to follow the instructions below:


- You are advised to switch off the cellphone from time to time to optimize its performance.
- You are advised to fully charge (  ) the battery for optimal operation.
- Avoid storing large amounts of data in your cellphone as this may affect the performance of your cellphone.

and carry out the following checks:

### My cellphone will not switch on

- Press (  ) until the screen comes on
- Check the battery charge level
- Check the battery contacts, remove and reinstall your battery, then turn your cellphone back on

### My cellphone has not responded for several minutes

- Press the (  ) key
- Remove the battery and re-insert it, then switch the cellphone back on

### My screen is difficult to read

- Clean your screen
- Use your cellphone in accordance with the recommended conditions of use

### My cellphone turns off by itself

- Check that your keypad is locked when you are not using your cellphone
- Check the battery charge level

### My cellphone will not charge properly

- Make sure that your battery is not completely discharged; the battery charge indicator can take several minutes and may be accompanied by a quiet whistling sound
- Make sure charging is carried out under normal conditions (0°C – +40°C)

22

### • PRIVACY:

Please note that you must respect the laws and regulations in force in your jurisdiction or other jurisdiction(s) where you will use your cellphone regarding taking photographs and recording sounds with your cellphone. Pursuant to such laws and regulations, it may be strictly forbidden to take photographs and/or to record the voices of other people or any of their personal attributes, and reproduce or distribute them, as this may be considered to be an invasion of privacy.

It is the user's sole responsibility to ensure that prior authorization be obtained, if necessary, in order to record private or confidential conversations or take a photograph of another person; the manufacturer, the seller or vendor of your cellphone (including the operator) disclaim any liability which may result from the improper use of the cellphone.

### • BATTERY AND ACCESSORIES:

Before removing the battery from your cellphone, please make sure that the cellphone is switched off.

Observe the following precautions for battery use:

- Do not attempt to open the battery (due to the risk of toxic fumes and burns).
- Do not puncture, disassemble or cause a short-circuit in a battery.
- Do not burn or dispose of a used battery in the garbage or store it at temperatures above 60°C.

Batteries must be disposed of in accordance with locally applicable environmental regulations. Only use the battery for the purpose for which it was designed. Never use damaged batteries or those not recommended by TCT Mobile Limited and/or its affiliates.



They will then be recycled, preventing substances being disposed of in the environment, so that their components can be reused.

### In European Union countries:

These collection points are accessible free of charge. All products with this sign must be brought to these collection points.

### In non European Union jurisdictions:

Items of equipment with this symbol are not to be thrown into ordinary bins if your jurisdiction or your region has suitable recycling and collection facilities; instead they are to be taken to collection points for them to be recycled.

In the United States you may learn more about CTIA's Recycling Program at [www.recyclewirelessphones.com](http://www.recyclewirelessphones.com)

**CAUTION: RISK OF EXPLOSION IF BATTERY IS REPLACED BY AN INCORRECT TYPE. DISPOSE OF USED BATTERIES ACCORDING TO THE INSTRUCTIONS**

17

### • CHARGERS

Home A.C./Travel chargers will operate within the temperature range of 0°C to 40°C. The chargers designed for your cellphone meet with the standard for safety of information technology equipment and office equipment use. Due to different applicable electrical specifications, a charger you purchased in one jurisdiction may not work in another jurisdiction. They should be used for this purpose only.

**Characteristics of power supply** (depending on the country):  
Travel charger: Input: 100-240 V, 50/60 Hz, 150 mA  
Output: 5 V, 350/400 mA  
Lithium 650 mAh

### • RADIO WAVES:

**THIS CELLPHONE MEETS THE GOVERNMENT'S REQUIREMENTS FOR EXPOSURE TO RADIO WAVES.**

Your cellphone is a radio transmitter and receiver. It is designed and manufactured not to exceed the emission limits for exposure to radio-frequency (RF) energy. These limits are part of comprehensive guidelines and establish permitted levels of RF energy for the general population. The guidelines are based on standards that were developed by independent scientific organizations through periodic and thorough evaluation of scientific studies. These guidelines include a substantial safety margin designed to ensure the safety of all persons, regardless of age and health.

The exposure standard for cellphones employs a unit of measurement known as the Specific Absorption Rate, or SAR. The SAR limit set by public authorities such as the Federal Communications Commission of the US Government (FCC), or by Industry Canada, is 1.6 W/kg averaged over 1 gram of body tissue. Tests for SAR are conducted using standard operating positions with the cellphone transmitting at its highest certified power level in all tested frequency bands.

Although the SAR is determined at the highest certified power level, the actual SAR level of the cellphone while operating can be well below the maximum value. This is because the cellphone is designed to operate at multiple power levels so as to use only the power required to reach the network. In general, the closer you are to a wireless base station antenna, the lower the power output of the cellphone. Before a cellphone model is available for sale to the public, compliance with national regulations and standards must be shown.



The highest SAR value for this model cellphone when tested is 1.15 W/kg for use at the ear and 1.08 W/kg for use close to the body.

While there may be differences between the SAR levels of various cellphones and at various positions, they all meet the government requirement for RF exposure. For body-worn operation, the cellphone meets FCC RF exposure guidelines provided that it is used with a non-metallic accessory with the handset at least 1.5 cm from the body. Use of other accessories may not ensure compliance with FCC RF exposure guidelines.

The World Health Organization (WHO) considers that present scientific information does not indicate the need for any special precautions for use of cellphones. If individuals are concerned, they might choose to limit their own or their children's RF exposure by limiting the length of calls, or using "hands-free" devices to keep cellphones away from the head and body. (fact sheet n°193). Additional WHO information about electromagnetic fields and public health are available on the following website: <http://www.who.int/peh-emf>.

18

### The sound quality of the calls is not optimal

- You can adjust the volume during a call by means of the  key
- Check the radio reception icon level 

### I am unable to use the features described in the manual

- Check with your operator to make sure that your subscription includes this service
- Make sure this feature does not require an Alcatel accessory

### When I select a number from my directory, the number is not dialled

- Make sure that you have correctly recorded the number in your file
- Make sure that you have selected the country prefix when calling a foreign country

### I am unable to create a file in my directory

- Make sure that your SIM card directory is not full; delete some files or save the files in the product directory (i.e. your professional or personal directories)

### My callers are unable to leave messages on my voicemail

- Contact your network operator to check service availability

### I cannot access my voicemail

- Make sure your operator's voicemail number is correctly entered in "My numbers"
- Try later if the network is busy

### I am unable to send and receive messages MMS, Vox MMS

- Check your cellphone memory available as it might be full
- Contact your network operator to check service availability and check MMS parameters
- Verify the server center number or your MMS profile with your operator
- The server center may be saturated; try again later

### The icon is displayed on my standby screen

- You have saved too many short messages on your SIM card; delete some of them or archive them in the product memory

### "No service" is displayed

- You are outside of the network coverage area

24

Note: This equipment has been tested and found to comply with the limits for a Class B digital device pursuant to part 15 of the FCC Rules. These limits are designed to provide reasonable protection against harmful interference in a residential installation. This equipment generates, uses and can radiate radio frequency energy and, if not installed and used in accordance with the instructions, may cause harmful interference to radio communications. However, there is no guarantee that interference to radio or television reception, which can be determined by turning the equipment off and on, the user is encouraged to try to correct the interference by one or more of the following measures:

- Reorient or relocate the receiving antenna.
- Increase the separation between the equipment and receiver.
- Connect the equipment into an outlet on a circuit different from that which the receiver is connected.
- Consult the dealer or an experienced radio/TV technician for help.

Changes or modifications not expressly approved by the party responsible for compliance could void the user's authority to operate the equipment. For the receiver devices associated with the operation of a licensed radio service (e.g. FM broadcast), they bear the following statement:

This device complies with Part 15 of the FCC Rules. Operation is subject to the condition that this device does not cause harmful interference. For other devices, they bear the following statement:

This device complies with Part 15 of the FCC Rules. Operation is subject to the following two conditions:


- (1) This device may not cause harmful interference
- (2) This device must accept any interference received, including interference that may cause undesired operation.

Your cellphone is equipped with a built-in antenna. For optimal operation, you should avoid touching it or degrading it.

As mobile devices offer a range of functions, they can be used in positions other than against your ear. In such circumstances the device will be compliant with the guidelines when used with headset or usb data cable. If you are using another accessory ensure that whatever product is used is free of any metal and that it positions the cellphone at least 2cm away from the body.

### • LICENCES

Obigo® is a registered trademark of Obigo AB.

 eZiText™ and Zi™ are trademarks of Zi Corporation and/or its corporation Affiliates.

19

### I have already entered 3 incorrect PIN codes

- Contact your network operator to obtain the PUK code (Personal Unblocking Key)

### I am unable to connect my cellphone to my computer

- Install first of all Alcatel's PC suite
- Use "Install the connection" and perform the installation
- Check that your computer meets the requirements for Alcatel's PC Suite installation

### I am unable to download new files

- Check for free space
- Delete some files
- Check your subscription status with your operator

### The cellphone can't be detected by others via Bluetooth

- Make sure that Bluetooth is turned on and your cellphone is visible to other users

### My cellphone is dead, can't power on

- Make sure your battery is not completely used up or damaged.
- Remove your battery, remove your SIM card then power it on again.
- Hold down # + power on/off key at same time to reset it.

 ALL User cellphone data: contacts, photos, messages and files, downloaded applications like Java games will be lost permanently.

### How to make your battery last longer

- Make sure you follow the complete charge time (minimum 3 hours)
- After a partial charge, the battery level indicator may not be exact. Wait for at least 20 minutes after removing the charger to obtain an exact indication.
- Switch on the backlight upon request.
- Extend email auto-check interval to as long as possible.
- Update news, weather info. upon demand manually or set its auto-check interval longer.
- Exit Java background-running applications if unused for a long time.

26

## General information ..... Cellphone warranty .....

- **Website:** [www.alcatel-mobilephones.com](http://www.alcatel-mobilephones.com)
- **Hot Line Number:** see "TCT Mobile Services" leaflet or go to our Internet site.

On our Internet site, you will find our FAQ (Frequently Asked Questions) section. You can also contact us by e-mail to ask any questions you may have.

An electronic version of this user guide is available in English and other languages according to availability on our server: [www.alcatel-mobilephones.com](http://www.alcatel-mobilephones.com)

Your cellphone is a transceiver that operates on GSM networks with 850, 1800 and 1900 MHz bands.

### Protection against theft <sup>(1)</sup>

Your cellphone is identified by an IMEI (cellphone serial number) shown on the packaging label and in the product's memory. We recommend that you note the number the first time you use your cellphone by entering \*#06# and keep it in a safe place. It may be requested by the police or your operator if your cellphone is stolen. This number allows your cellphone to be blocked preventing a third person from using it, even with a different SIM card.

### Disclaimer

There may be certain differences between the user manual description and the cellphone's operation, depending on the software release of your cellphone or specific operator services.

<sup>(1)</sup> Contact your network operator for service availability.

Your cellphone is warranted against any defect which may occur in conditions of normal use during the warranty period of twelve (12) months<sup>(1)</sup> from the date of purchase as shown on your original invoice. Batteries<sup>(2)</sup> and accessories sold with your cellphone are also warranted against any defect which may occur during the first six (6) months<sup>(1)</sup> from the date of purchase as shown on your original invoice.

In case of any defect of your cellphone which prevents you from normal use thereof, you must immediately inform your vendor and present your cellphone with your proof of purchase.

If the defect is confirmed, your cellphone or part thereof will be either replaced or repaired, as appropriate. Repaired Cellphone and accessories are entitled to a one (1) month warranty for the same defect. Repair or replacement may be carried out using reconditioned components offering equivalent functionality.

This warranty covers the cost of parts and labor but excludes any other costs.

<sup>(1)</sup> The warranty period may vary depending on your country.  
<sup>(2)</sup> The life of a rechargeable cellphone battery in terms of conversation time standby time, and total service life, will depend on the conditions of use and network configuration. Batteries being considered expendable supplies, the specifications state that you should obtain optimal performance for your cellphone during the first six months after purchase and for approximately 200 more recharges.

20