

## Your cellphone .....



### 1.1 Keys

- Navigation key (confirm an option)
  - Main menu, confirm an option
  - Messages
  - Directory
  - Web
  - Email
  - Volume
  - Right softkey
  - Switch on/Switch off
  - End call
  - Camera key
  - Del key
  - Vibration alert
  - Ctrl key
  - Lock/Unlock
  - Left softkey
  - Message key
  - Answer/Send call
  - Call memory
  - Voicemail
  - Caps key
  - Navigation key (confirm an option)
  - Main menu, confirm an option
  - Messages
  - Directory
  - Web
  - Email
  - Volume
  - Right softkey
  - Switch on/Switch off
  - End call
  - Camera key
  - Del key
  - Vibration alert
  - Ctrl key
  - Lock/Unlock
  - Left softkey
  - Message key
  - Answer/Send call
  - Call memory
  - Voicemail
  - Caps key
- Side key  
- Push: Access "Music player", "Radio", "World clock", "Image viewer", "News", "Weather forecast", "My friends".  
Confirm an option  
- Scroll up/down: Volume up/down  
Previous/next menu
- Ctrl + B: Activate/Deactivate Bluetooth  
Ctrl + M: Access Music player  
Ctrl + P: Access Profiles  
Ctrl + J: Access Java applications

<sup>(1)</sup> Depending on your network operator.  
<sup>(2)</sup> Disabled events (incoming call, SMS/MMS, news, weather, appointments etc.) displayed on main screen.

- Delete a contact (in Directory/Call memory)
- Delete a message (in Inbox/Outbox...)
- Delete a file (in File manager)
- Delete a note (in Notes)
- Shift sound play among Headset, Bluetooth and Headset & Bluetooth (long keypress).

### 1.2 Main screen icons <sup>(1)</sup>

- Battery charge level**
- Vibrate alert:** your cellphone vibrates, but does not ring or beep with the exception of the alarm
- Bluetooth status** (Blue - Activated).
- Bluetooth status** (Connected to an audio device).
- Headset connected.**
- Keypad locked.**
- Call forwarding activated:** your calls are forwarded.
- Alarm or appointments programmed.**
- Level of network reception.**
- Voicemail message arrived.**
- Missed calls.**
- Radio is on.**
- Stopwatch is active.**
- WAP alerts <sup>(2)</sup>.**

<sup>(1)</sup> The icons and illustrations in this guide are provided for informational purposes only.  
<sup>(2)</sup> Depending on your network operator.

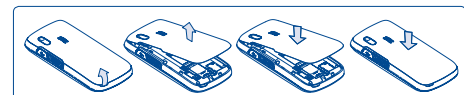
- Roaming.**
- Memory card scanning in progress.**
- Memory card scanning completed.**
- SIM card missing.**
- Line switching <sup>(1)</sup>:** indicates the selected line.
- GPRS connection status** (Blue - Activated).
- EDGE attached.**
- EDGE connecting.**  
Shown only in no ciphering mode while calling, sending/receiving SMS.
- Music player active.**
- Message receipt in progress.**
- Sending a message.**
- Silence mode:** your cellphone does not ring, beep or vibrate with the exception of the alarm.
- Message unread**
- Message list is full:** your cellphone cannot accept any new messages. You must access the message list and delete at least one message on your SIM card.
- Flight mode.**
- A2DP connected.**

<sup>(1)</sup> Contact your network operator to check service availability.

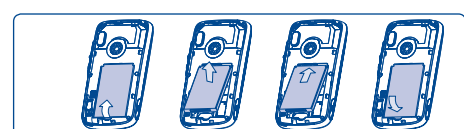
## 2 Getting started .....

### 2.1 Set-up

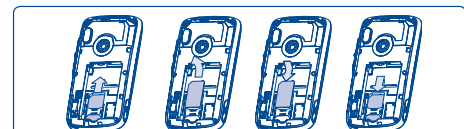
#### Removing or installing the back cover



#### Installing or removing the battery



#### Inserting or removing the SIM card



Place the SIM card with the chip facing downwards and slide it into its housing. Make sure that it is correctly inserted. To remove the card, press the bottom and slide it out. Please power off your phone before you remove the SIM card.

### 2.2 Power on your cellphone

Hold down the key until the cellphone powers on.

### 2.3 Power off your cellphone

Hold down the key from the main screen.

## 3 Calls.....

### 3.1 Making a call

Dial the desired number then press the key to place the call. If you make a mistake, you can delete the incorrect digits by pressing the right softkey or key.

To hang up the call, press the key.

#### Making an emergency call

If your cellphone has network coverage, dial emergency number and press the key to make an emergency call. This works even without a SIM card and without typing the PIN code.

## 4 Menu arrange .....

Main Menu is designed to vary according to your preference.

#### Change the order

Press left softkey and select "Move" or long keypress Side key/ key till tick "I" is shown, then move the cursor to your favourite destination and confirm with key.

#### Show/Hide

Access "Menu arrange", press to show/hide the main menu items.

#### Restore default settings

From main menu, select "Menu arrange", press the "Options" softkey, and then select "Restore default settings" to return back to the default menu display.

## 5 Messages.....

### 5.1 Create message

From the main menu select "Messages/Write msg" to create text/multimedia message.

An SMS will be converted to MMS automatically when images, videos, audios, slides, attachments inserted, Subject, CC/BCC/email address added, or the message contains more than 8 pages of text.

### 5.2 Inbox

All received messages (read and unread) are stored in the same Inbox.

#### Group by sender/Group by receiver <sup>(1)</sup>

Messages can be grouped by sender/receiver ("Options/Group by sender"/"Options/Group by receiver"). And you are enabled to quickly search the messages by pressing the key associated with the first letter of sender/receiver's name.

#### Group unread message

Unread messages will always be positioned above the read messages.

#### Timer send

Schedule a SMS/MMS to be sent out at predefined time (Create SMS/MMS→Add number→Options/Timer send).

#### Multi-mark

Mark/Unmark file(s) for further operations: Move to archive <sup>(2)</sup>, Send <sup>(3)</sup>, Delete.

## 6 Email .....

Your cellphone has an email client with the settings pre-defined for a few popular email services like - GoogleMail, Windows Live, Yahoo, AOL, etc. Besides this, you can set up other POP3 or IMAP4 email accounts that you may be using.

<sup>(1)</sup> The option of "Group by receiver" is available in Outbox, Sent, and Draft folders only.  
<sup>(2)</sup> Inbox/Sent folder only.  
<sup>(3)</sup> Outbox only.

## 7 Instant messaging <sup>(1)</sup>.

Palringo Instant messaging (IM) allows you to chat with other people using Palringo account. You can also connect to other popular IM services through Palringo, like Yahoo, AIM, GG, ICQ, Google talk, iChat and etc. Please note that the services may be upgraded upon your client version.

## 8 Directory .....

### 8.1 Consulting your directory

To access the **Directory** from the main screen, press the key or press the key and select the icon from the menu.

### 8.2 Adding a contact

Select the directory in which you wish to add a contact, press the "Options" softkey, select "Add contact".

## 9 Call register.....

### 9.1 Call memory

You can access your call memory by pressing the key from the main screen.

### 9.2 Billing <sup>(1)</sup>

You can access different items with this option: **Amount, Duration, GPRS counter, Beep duration.**

### 9.3 Call settings

You can access a number of items with this option: **Call waiting, Call forwarding, Call barring, Caller ID, Line switching, Auto redial.**

<sup>(1)</sup> Depending on your network operator.

## 10 Media applications.....

### 10.1 Music player.....

Access this feature from the main menu by selecting "Music player". You will have full flexibility of managing music both on your cellphone and memory card.

#### Mark/Unmark

Mark/Unmark tick(s) on file(s) for further operations: **Add to my star list, Play, Send, Delete marked, etc.**

### 10.2 Image viewer.....

A library links to the images in "My creations" and "My images" in cellphone to be shown in list, slide, or thumbnail, set as Wallpaper, Screen saver, Power on/off display, and Contact ID, or sent by MMS, Email, Bluetooth.

### 10.3 Video player.....

Contains video clips recorded, received or downloaded and enables you to **Play, Set as contact ID, Mark/Unmark, Send** (by MMS, Email, or Bluetooth), **Delete, Delete all, Rename, Sort** (by name, type, time or size) and to **Download/Capture** new video clips.

#### Streaming URL

This feature enables the user to start watching video almost as soon as it begins downloading from internet.

### 10.4 Radio .....

Your cellphone is equipped with a Radio <sup>(1)</sup> with RDS functionality. You can use the application as a traditional Radio with saved channels or with parallel visual information related to the radio program on the display, if you tune to stations that offer Visual Radio service. You can listen to it while running other applications.

<sup>(1)</sup> The quality of the radio depends on the coverage of the radio station in that particular area.

## 11 Internet <sup>(1)</sup>.....

### 11.1 My friends.....

It migrates self-contained sub-trees of the websites to let you stay in touch with your friends by flicking through Bebo, Friendster, Hi5, Myspace, etc.

### 11.2 Opera.....

Not only does Opera Mini give you the full Web experience where you stay in touch with your friends, obtain information, do your online banking etc., but it is also designed to save time by using compressed web pages.

### 11.3 Web.....

Access Web options: **Homepage, Bookmarks, Go to URL, Last web address, Recent pages, Offline pages, Service inbox, Settings.**

### 11.4 News.....

It is a huge time saver providing news updates from a website in a simple form. Once subscribed to a feed, it gives you the ability to track and manage all your favourite RSS content on your cellphone at anytime, anywhere!

### 11.5 Weather.....

Your cellphone is equipped with a weather function for consulting up to 3-day forecast of favourite cities.

### 11.6 Facebook.....

Facebook is a social utility that connects people with friends and others who work, study and live around them. It provides a number of features with which users may interact: Wall, a space on every user's profile page that allows friends to post messages for the user to see; Pokes, which allow users to send a virtual "poke" to each other; Gifts, a feature allowing users to send virtual gifts which appear on the recipient's profile; Market places, which lets users post free classified goods, etc.  
To open an account online, please go to: <http://www.facebook.com/>.

### 11.7 Twitter.....

Twitter is a social networking and microblogging service that has gained notability and popularity worldwide. This feature enables cellphone users to exchange news updates and ideas with a community in the form of messages or posts. Posts are displayed on the author's profile page and delivered to the author's subscribers or followers.  
To open an account online, please go to: <http://twitter.com/>.

<sup>(1)</sup> Depending on your network operator. May cause additional network charges for data flow to provide this service. Extra fees might also be charged in roaming states.

## 12 Entertainment .....

### 12.1 Fun.....

The stopwatch is a simple application for measuring time with the possibility to register several results and suspend/resume measurement.

### 12.1.1 Stopwatch

Your phone may include some JAVA™ games.

### 12.1.2 Games

Your phone may include some JAVA™ games.

### 12.2 Ebook <sup>(1)</sup>.....

A bookshelf contains the electronic books (.txt and .pdb file only). While reading the book, you may add bookmarks, or reach the text by searching words, phrases (Options/Search, Options/Jump to).

### 12.3 Java.....

Your cellphone may include <sup>(2)</sup> some Java™ applications and games. You can also download new applications and games to your cellphone.

## 13 Camera.....

Your cellphone is fitted with a camera for taking photos and shooting videos that you can use in different ways:

- store them in your "File manager/My creations",
- send them in a multimedia message (MMS) to a cellphone or an email address.
- send them directly by Email or Bluetooth.
- customize your main screen.
- select them as incoming call image to a contact in your directory.
- transfer them by data cable or microSD card to your computer.
- modify your photos by adding frames (only available to size 320x240).

<sup>(1)</sup> This menu is hidden by default, you can make it visible in main menu (see page 6).

<sup>(2)</sup> Depending on your country or your operator.

## 14 Profiles.....

With this menu, you may personalize ringtones for different events and environments.

## 15 File manager .....

You will have an access to all audio and visual files stored in cellphone or memory card in File manager. You can access a number of items with this option: **My audios, My images, My videos, My creations, Others, Ebook, Phone and Memory card.**

### 15.1 Memory card

You can access all files stored in the memory card here.

#### Insert the memory card



To release the microSD card holder, slide it in the direction of the arrow and lift it. Then insert the microSD card with the golden contact downward. Finally, turn down the microSD holder and slide it in the opposite direction to lock it.

### 15.2 Formats and compatibility <sup>(1)</sup>

- Sounds: mp3, m4a, aac, midi, wav, amr, vma
- Images: jpg, gif
- Videos: 3gp, mp4

<sup>(1)</sup> Depending on cellphone and market.

## 16 Bluetooth™ .....

Access this feature by pressing the key to enter the main menu, then selecting "Bluetooth".

## 17 Others.....

### 17.1 Calendar.....

Once you enter this menu from main menu, there is a monthly-view calendar for you to keep track of important meetings, appointments, etc. Days with events entered will be marked in color.

### 17.2 Calculator.....

Access this feature by selecting "Calculator" from the main menu. Enter a number, select the type of operation to be performed using the navigation keys, and enter the second number, then press key or left softkey to display the result.

### 17.3 Notes.....

You can create a note in text or voice format by accessing "Notes" from main menu.

### 17.4 Tasks.....

Enables you to easily manage and track the progress of a task with priorities. All the tasks will be sorted by due date.

### 17.5 Clock.....

#### 17.5.1 Alarm

Your cellphone has a built-in alarm clock with a snooze feature.

#### Mode

You may select the mode of Ringtone: Ring, Vibration only, Silence, Radio <sup>(1)</sup> or Vibration and Ring.

<sup>(1)</sup> In Radio mode, you are required to plug in headset first. Your cellphone will power on automatically before Radio is on.

### 17.5.2 Clock

Allows you to have settings of date and time, including 12/24h format.

### 17.5.3 World clock

The World clock shows current local time and the time zone in different cities.

### 17.6 Converter

#### 17.6.1 Unit converter

You can use the Weight and Length conversion by selecting the unit you wish to convert.

#### 17.6.2 Currency converter

The currency converter allows you to convert a currency directly into euros and vice versa or convert between international currencies.

ALCATEL is a trademark of Alcatel-Lucent and is used under license by TCT Mobile Limited.

All rights reserved © Copyright 2010 TCT Mobile Limited.

TCT Mobile Limited reserves the right to alter material or technical specification without prior notice.

Prolonged exposure to music at full volume on the music player may damage the listener's hearing. Set your cellphone volume safely. Use only cellphone recommended by TCT Mobile Limited and its affiliates.

