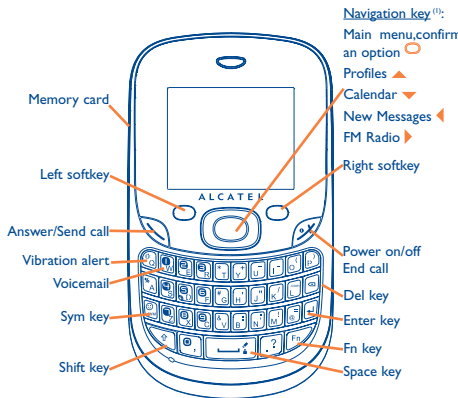


Your cellphone



SAR
www.sar-tick.com
This product meets applicable national SAR limits of 1.6 W/kg. The specific maximum SAR values can be found on page 19 of this user guide. When carrying the product or using it while worn on your body, either use an approved accessory such as a holster or otherwise maintain a distance of 1.5 cm from the body to ensure compliance with RF exposure requirements. Note that the product may be transmitting even if you are not making a phone call.

1.1 Keys

- Navigation key (Fn): Confirm an option (press the middle of the key)
- Access to menu (short keypress)
- Show/hide shortlist menu (long keypress)
- Answer
- Send a call
- Access call memory (short keypress)
- Access to Fake call (long keypress)
- Switch on/Switch off the cellphone (long keypress)
- End call
- Return to the idle screen
- Left softkey
- Right softkey
- Access your voicemail (long keypress)
- Input the "#" in Idle
- In idle screen: Long/short keypress: Lock/Unlock the keypad
- In edit mode: Short keypress: input space Long keypress: switch language Fn key + Space: switch input mode

1.2 Main screen icons (1)

- Battery charge level**
Vibrate alert: Your cellphone vibrates, but does not ring or beep with the exception of the alarm.
- Headset connected.**
- Keypad locked.**
- Call forwarding activated:** your calls are forwarded.
- In idle screen: Press to access shortcuts Fn + P: access to Profiles Fn + Q: access to Clock Fn + S: access to Notes In edit mode: Press once to input top-half character. Press twice to lock top-half inputting mode, then press once to unlock top-half inputting mode. Long keypress: access to Dictionary.
- In edit mode: Short press: popup symbol page to select special character by navigation key Long press + Fn+SYM: popup smileys page to select special smileys by navigation key
- Delete one by one (short keypress) Delete one by one quickly (long keypress)
- Switch the uppercase and minuscule (in edit screen)
- Return a cursor to the next line.

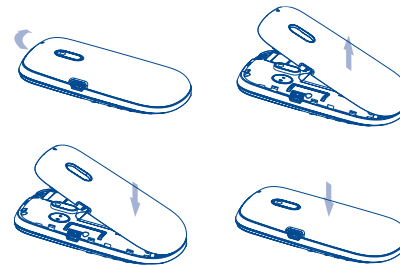
Alarm clock.

- Level of network reception.
- Voicemail message arrived.
- Missed calls.
- Radio is on.
- Stopwatch is active.
- WAP alerts (1).
- Roaming.
- Memory card scanning in progress.
- Memory card scanning completed.
- Line switching (2): indicates the selected line.
- GPRS connection status (Blue - Activated).
- GPRS connecting.
- Message receipt in progress.
- Sending a message.
- Silence mode: your cellphone neither rings, beeps nor vibrates except for the alarms.
- Message unread.
- Message list is full: your terminal cannot accept any new messages. You must access the message list and delete at least one message on your SIM card.
- Flight mode.

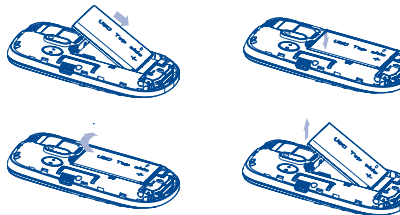
2 Getting started

2.1 Set-up

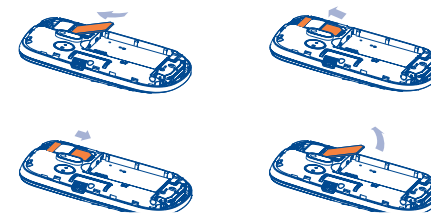
Removing or installing the back cover



Installing or removing the battery

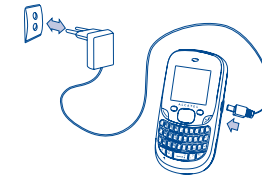


Inserting or removing the SIM card



Place the SIM card with the chip facing downwards and slide it into its housing. Make sure that it is correctly inserted. To remove the card, press the bottom and slide it out. Please power off your cellphone before you remove the SIM card.

Charging the battery



- Connect the battery charger to your phone and mains socket respectively
- The charging may take about 20 minutes to start if the battery is flat.
- Be careful not to force the plug into the socket.
- Make sure the battery is correctly inserted before connecting the charger.
- The mains socket must be near to the phone and easily accessible (avoid electric extension cables).
- When using your telephone for the first time, charge the battery fully (approximately 3 hours). You are advised to fully charge the battery (100%).
- To reduce power consumption and energy waste, when battery is fully charged, disconnect your charger from the plug; reduce the backlight time, etc.

The charge is complete when the animation stops.

2.2 Power on your cellphone

Hold down the key until the cellphone powers on.

2.3 Power off your cellphone

Hold down the key until the cellphone power off.

3 Calls.....

3.1 Making a call

Dial the desired number then press the key to place the call. If you make a mistake, you can delete the incorrect digits by pressing the right softkey or key.

To hang up the call, press the key.

Making an emergency call

If your cellphone has network coverage, dial emergency number and press the key to make an emergency call. This works even without a SIM card and without typing the PIN code or unlocking the keypad.

3.2 Call memory

You can access your call memory by pressing the key from the idle screen. Check "Outgoing calls", "Missed calls", "Answered calls".

4 Menu arrange

Main Menu is designed to vary according to your preference.

Change the order

From main menu, press left softkey and select "Move" or long keypress key till tick "" is shown, then move the cursor to your favorite destination and confirm with key.

Show/Hide

Access "Menu arrange", press key till tick ("") show or off, it will show/hide some main menu.

5 Messages

5.1 Messages: Text/Multimedia message

5.1.1 Create message
From the main menu select "Messages" to create text/multimedia message.

You can type a message and you can also modify a predefined message in Templates or customize your message by adding pictures, photos, sounds, titles, etc (only available while editing a MMS). While writing a message, select "Options" to access all the messaging options. You can save your messages that you send often to Drafts or Templates (MMS only).

5.1.2 Inbox

All received messages (read and unread) are stored in the same Inbox.

Group by sender/Group by receiver (1)

Messages can be grouped by sender/receiver ("Options"Group by sender"/"Options"Group by receiver"). And you are enabled to quick search the messages by pressing the key associated with the first letter of sender/receiver's name.

5.2 SMS Conversation (chat) (2)

Access to "Advanced" and select "Switch view mode", keep the conversation going in real time using SMS chat. You may separate chat for every contact with whom you exchange short text messages.

5.3 Email (3)

Your cellphone has an email client with the settings predefined for a few popular email services like - GoogleMail, Windows live, Yahoo, AOL, etc.

6 Directory

6.1 Consulting your directory

To access the Directory from the main screen, press the key and select the icon.

6.2 Adding a contact

Select the contacts list in which you wish to add a contact to, press the "Options" softkey, select "Add contact" then Save.

7 Fake Call

Protect yourself from annoying situations with the "Fake Call". In this menu, you can set "Caller name/nb", "Call time" and "Ringtone". When the timer reaches, the cellphone will ring and display like receiving a real cellphone call. Press key, pretend answering a call, the screen will display just like have an ongoing call. Press key, pretend to reject the call, the call will terminate automatically.

8 Radio

Your cellphone is equipped with a Radio (1) with RDS functionality. You can use the application as a traditional Radio with saved channels or with parallel visual information related to the radio program on the display, if you tune to stations that offer Visual Radio service. You can listen to it while running other applications.

9 Internet (1)

9.1 WAP

Access WAP options: Homepage, Bookmarks, Go to URL, Recent pages, Offline pages.

9.2 Weather

Your cellphone is equipped with a weather function for consulting up to 3-day forecast of favorite cities.

9.3 News.....

It is a huge time saver providing news updates from a website in a simple form. Once subscribed to a channel, it gives you the ability to track and manage all your favorite RSS content on your cellphone at anytime, anywhere!

Available options:

- View** Message title or message summary of a channel with URL will be shown.
- Update** Refresh the content of a channel.
- Create channel** Create a new channel with name and URL.
- Delete** Delete the channel.
- Edit** Edit the name or URL of a channel.
- Update all** Refresh all channels.
- Settings** Select a regular interval to retrieve updates automatically, set to show images or not, as well as a WAP account to connect to.
- Enable/Disable all auto-update** Activate auto-update or not to all channels.
- Send** Share a channel with your friend by sending it by SMS, MMS or Email.

10 ICE

ICE (in case of emergency) are 3 numbers emergency services can call if you have an accident, you can also add useful information such as blood type, allergy. Access to "ICE" menu from main menu and below options are available: View, Add/Edit, Delete.

11 Games.....

Your cellphone includes some games. Select "Game settings", it allows you to manage settings, in which you may set background audio and vibration alert.

12 Camera.....

Your cellphone is fitted with a camera for taking photos that you can use in different ways:

- Store them in your "Media album/My creations".
- Send them in a multimedia message (MMS) to a cellphone or an email address.
- Send them directly by Email.
- Customize your main screen.
- Select them as incoming call image to a contact in your directory.
- Transfer them by microSD card to your computer.

13 Profiles

With this menu, you may personalise ringtones for different events and environments.

14 Media album.....

You will have an access to all audio and visual files stored in cellphone or in Medium Album. You can access a number of items with this option: My audios, My images, Unknown files and Memory status.

Inserting the memory card



- Unclip the cover and insert the MicroSD card with golden contact downwards into the slot.
- Unclip the cover and gently push the memory card until unlocked.
- Take out your MicroSD card and clip the cover closed.

15 Music Player

Access this feature from the main menu by selecting "Music player". You will have full flexibility of managing music both on your cellphone and memory card.

16 Services.....

Contact your network operator to check service availability.

17 Others.....

17.1 Calendar

Once you enter this menu from main menu, there is a monthly-view calendar for you to keep track of important meetings, appointments, etc. Days with events entered will be marked in color.

17.2 Calculator

Access this feature by selecting "Calculator" from the main menu. Enter a number, select the type of operation to be performed using the navigation keys, and enter the second number, then press key or left softkey to display the result.

17.3 Notes.....

You can create a note in text or voice format by accessing "Notes" from main menu.

17.4 Tasks.....

Enables you to easily manage and track the progress of an task with priorities. All the tasks will be sorted by due date.

17.5 Clock

Your cellphone has a built-in alarm clock with a snooze feature.

17.5.1 Alarm

Allows you to have settings of date and time, including 12/24h format.

17.5.2 World clock

The World clock shows current local time and the time zone in different cities.

17.5.3 Stopwatch

The stopwatch is a simple application for measuring time with the possibility to register several results and suspend/resume measurement.

17.6 Converter

Unit converter and Currency converter.

18 Settings.....

From the main menu, select the menu icon and select the function of your choice in order to customize your cellphone: Display, Languages, Headset, Input mode, Vocabulary, Keys, Security, Networks, Connectivity, Restore default set, Call settings.

18.1 Keys

You may set the keypad to which you prefer to. Fn + Keys: you may define the combined Fn key function and to get shortcuts with below options: Edit/Add/Delete.

(1) The option of Group by receiver is available in Outbox, Sent, and Draft folders only.
(2) Depending on your network operator.
(3) HTML email and image in email not supported.
English - CJB22DIALAAA

18.2 Call settings

My numbers

Type in or modify your cellphone number and confirm by pressing . Your cellphone number is usually written on your SIM card.

Billings

You can access different items with this option: **Amount, Duration, GPRS counter, Beep duration**.

Latin input mode.....

To write messages, there are two writing methods:
 - Normal: this mode allows you to type a text by choosing a letter or a sequence of characters associated with a key.
 - Predictive with the Zi mode: This mode speeds up the writing of your text.

- Fn key : Press once: input top-half character, Press twice: lock top-half character inputting mode, then press once to unlock top-half character inputting mode.
- Long press: access to Dictionary
- Sym key : Short keypress: access the Symbols table, Long keypress & Fn + Sym: popup smileys page
- Space key : Short press: input space, Long press: press to switch language, Fn+Space: switch input mode
- Shift key : In abc (Multitapabc) input mode (no Abc mode): Short press once: only switch one character from minuscule to uppercase, Short press twice: lock uppercase input mode, Short press once: unlock the uppercase
- In eZiabc (Smartabc) input mode: Short press once: to eZI ABC, Short press twice: to eZI Abc
- Del key : Short keypress: delete one by one, Long keypress: delete one by one quickly

⁽¹⁾ Depending on your network operator.

Cellphone warranty

Your cellphone is warranted against any defect or malfunctioning which may occur in conditions of normal use during the warranty period of twelve (12) months ⁽¹⁾ from the date of purchase as shown on your original invoice.
 Batteries ⁽²⁾ and accessories sold with your cellphone are also warranted against any defect which may occur during the first six (6) months ⁽¹⁾ from the date of purchase as shown on your original invoice.
 In case of any defect of your cellphone which prevents you from normal use thereof, you must immediately inform your vendor and present your cellphone with your proof of purchase.
 If the defect is confirmed, your cellphone or part thereof will be either replaced or repaired, as appropriate. Repaired cellphone and accessories are entitled to a one (1) month warranty for the same defect. Repair or replacement may be carried out using reconditioned components offering equivalent functionality.
 This warranty covers the cost of parts and labor but excludes any other costs.

⁽¹⁾ The warranty period may vary depending on your country.
⁽²⁾ The life of a rechargeable cellphone battery in terms of conversation time standby time, and total service life, will depend on the conditions of use and network configuration. Batteries being considered expendable supplies, the specifications state that you should obtain optimal performance for your cellphone during the first six months after purchase and for approximately 200 more recharges.

Safety and use.....

We recommend that you read this chapter carefully before using your cellphone. The manufacturer disclaims any liability for damage, which may result as a consequence of improper use or use contrary to the instructions contained herein.

TRAFFIC SAFETY:
 Given that studies show that using a cellphone while driving a vehicle constitutes a real risk, even when the hands-free kit is used (car kit, headset...), drivers are requested to refrain from using their cellphone when the vehicle is not parked. Check the laws and regulations on the use of wireless cellphones and their accessories in the areas where you drive. Always obey them. The use of these devices may be prohibited or restricted in certain areas.

When driving, do not use your cellphone and headphone to listen to music or to the radio. Using a headphone can be dangerous and forbidden in some areas. When switched on, your cellphone emits electromagnetic waves that can interfere with the vehicle's electronic systems such as ABS anti-lock brakes or airbags. To ensure that there is no problem:

- do not place your cellphone on top of the dashboard or within an airbag deployment area,
- check with your car dealer or the car manufacturer to make sure that the car's electronic devices are shielded from cellphone RF energy.

CONDITIONS OF USE:
 You are advised to switch off the cellphone from time to time to optimize its performance.

Switch the cellphone off before boarding an aircraft to avoid prosecution. Switch the cellphone off when you are in health care facilities, except in designated areas. As with many other types of equipment now in regular use, cellphones can interfere with other electrical or electronic devices, or equipment using radio frequency.

Switch the cellphone off when you are near gas or flammable liquids. Strictly obey all signs and instructions posted in a fuel depot, gas station, or chemical plant, or in any potentially explosive atmosphere.

When the cellphone is switched on, it should be kept at least 15 cm from any medical device such as a pacemaker, a hearing aid or insulin pump. In particular when using the cellphone you should hold it against the ear on the opposite side to the device, if any.

To avoid hearing impairment, answer the call before holding your cellphone to your ear. Also move the handset away from your ear while using the "hands-free" option because the amplified volume might cause hearing damage.

Do not let children use the cellphone and/or play with the cellphone and accessories without supervision.
 When replacing the cover please note that your cellphone may contain substances that could create an allergic reaction.

Always handle your cellphone with care and keep it in a clean and dust-free place. Do not allow your cellphone to be exposed to adverse weather or environmental conditions (moisture, humidity, rain, infiltration of liquids, dust, sea air, etc.). The manufacturer's recommended operating temperature range is -10°C (14°F) to +55°C (131°F) (the max value depends on device, materials and housing paint/texture).

Over 55°C (131°F) the legibility of the cellphone's display may be impaired, though this is temporary and not serious.
 Do not open or attempt to repair your cellphone yourself.
 Do not drop, throw or try to bend your cellphone.
 Do not paint it.

Use only batteries, battery chargers, and accessories which are recommended by TCT Mobile Limited and its affiliates and are compatible with your cellphone model. TCT Mobile Limited and its affiliates disclaim any liability for damage caused by the use of other chargers or batteries.

Your cellphone should not be disposed of in a municipal waste. Please check local regulations for disposal of electronic products. Remember to make back-up copies or keep a written record of all important information stored in your cellphone.

Some people may suffer epileptic seizures or blackouts when exposed to flashing lights, or when playing video games. These seizures or blackouts may occur even if a person never had a previous seizure or blackout. If you have experienced seizures or blackouts, or if you have a family history of such occurrences, please consult your doctor before playing video games on your cellphone or enabling a flashing-lights feature on your cellphone. Parents should monitor their children's use of video games or other features that incorporate flashing lights on the cellphones. All persons should discontinue use and consult a doctor if any of the following symptoms occur: convulsion, eye or muscle twitching, loss of awareness, involuntary movements, or disorientation. To limit the likelihood of such symptoms, please take the following safety precautions:

- Do not play or use a flashing-lights feature if you are tired or need sleep.
- Take a minimum of a 15-minute break hourly.
- Play in a well lit environment.
- Play at the farthest distance possible from the screen.

When you play games on your cellphone, you may experience occasional discomfort in your hands, arms, shoulders, neck, or other parts of your body. Follow these instructions to avoid problems such as tendinitis, carpal tunnel syndrome, or other musculoskeletal disorders:

- Take a minimum of a 15-minute break every hour of game playing.
- If your hands, wrists, or arms become tired or sore while playing, stop and rest for several hours before playing again.
- If you continue to have sore hands, wrists, or arms during or after playing, stop the game and see a doctor.

Prolonged exposure to music at full volume on the music player may cause the listener's hearing impairment. Adjust the volume before placing headphones on or in your ear. Only use headphones recommended by TCT Mobile Limited and its affiliates.

Troubleshooting.....

Before contacting the aftersales department, you are advised to follow the instructions below:

- You are advised to switch off the cellphone from time to time to optimize its performance.
- You are advised to fully charge the battery for optimal operation.
- Avoid storing large amounts of data in your cellphone as this may affect the performance of your cellphone.

and carry out the following checks:

- My cellphone will not switch on**
 - Press until the screen comes on
 - Check the battery charge level
 - Check the battery contacts, remove and reinstall your battery, then turn your cellphone back on

- My cellphone has not responded for several minutes**
 - Press the key
 - Remove the battery and re-insert it, then switch the cellphone back on

- My screen is difficult to read**
 - Clean your screen
 - Use your cellphone in accordance with the recommended conditions of use

- My cellphone turns off by itself**
 - Check that your keypad is locked when you are not using your cellphone
 - Check the battery charge level

PRIVACY:

Please note that you must respect the laws and regulations in force in your jurisdiction or other jurisdiction(s) where you will use your cellphone regarding taking photographs and recording sounds with your cellphone. Pursuant to such laws and regulations, it may be strictly forbidden to take photographs and/or to record the voices of other people or any of their personal attributes, and reproduce or distribute them, as this may be considered to be an invasion of privacy.
 It is the user's sole responsibility to ensure that prior authorization be obtained, if necessary, in order to record private or confidential conversations or take a photograph of another person; the manufacturer, the seller or vendor of your cellphone (including the operator) disclaim any liability which may result from the improper use of the cellphone.

BATTERY AND ACCESSORIES:
 Before removing the battery from your cellphone, please make sure that the cellphone is switched off.
 Observe the following precautions for battery use:

- Do not attempt to open the battery (due to the risk of toxic fumes and burns).
- Do not puncture, disassemble or cause a short-circuit in a battery.
- Do not burn or dispose of a used battery in the garbage or store it at temperatures above 60°C (140°F).

Batteries must be disposed of in accordance with locally applicable environmental regulations. Only use the battery for the purpose for which it was designed. Never use damaged batteries or those not recommended by TCT Mobile Limited and/or its affiliates.

This symbol on your cellphone, the battery and the accessories means that these products must be taken to collection points at the end of their life:

- Municipal waste disposal centers with specific bins for these items of equipment
- Collection bins at points of sale.

They will then be recycled, preventing substances being disposed of in the environment, so that their components can be reused.

In European Union countries:
 These collection points are accessible free of charge. All products with this sign must be brought to these collection points.

In non European Union jurisdictions:
 Items of equipment with this symbol are not to be thrown into ordinary bins if your jurisdiction or your region has suitable recycling and collection facilities; instead they are to be taken to collection points for them to be recycled.

In the United States you may learn more about CTIA's Recycling Program at www.recyclewirelessphones.com
CAUTION: RISK OF EXPLOSION IF BATTERY IS REPLACED BY AN INCORRECT TYPE. DISPOSE OF USED BATTERIES ACCORDING TO THE INSTRUCTIONS

- My cellphone will not charge properly**
 - Make sure that your battery is not completely discharged; the battery charge indicator can take several minutes and may be accompanied by a quiet whistling sound
 - Make sure charging is carried out under normal conditions 0°C (32°F) - +40°C (104°F)
 - Make sure your battery is inserted. It must be inserted before plugging in the charger
 - Make sure you are using an Alcatel battery and charger in the box
 - When abroad, check that the electrical current is compatible

- My cellphone will not connect to a network**
 - Try connecting in another location
 - Verify the network coverage with your operator
 - Check with your operator that your SIM card is valid
 - Try selecting the available network(s) manually
 - Try connecting at a later time if the network is overloaded

- SIM card error**
 - Make sure the SIM card has been correctly inserted
 - Verify with your operator that your SIM card is 3V or 1.8V compatible; the old 5V SIM cards cannot be used
 - Make sure the chip on your SIM card is not damaged or scratched

- Unable to make outgoing calls**
 - Make sure you have dialled a valid number and press the key
 - For international calls, check the country and area codes
 - Make sure your cellphone is connected to a network, and that the network is not overloaded or unavailable
 - Check your subscription status with your operator (credit, SIM card valid, etc.)
 - Make sure you have not barred outgoing calls

CHARGERS

Home A.C./Travel chargers will operate within the temperature range of 0°C (32°F) to 40°C (104°F)
 The chargers designed for your cellphone meet with the standard for safety of information technology equipment and office equipment use. Due to different applicable electrical specifications, a charger you purchased in one jurisdiction may not work in another jurisdiction. They should be used for this purpose only.
Characteristics of power supply (depending on the country):
 Travel charger: Input: 100-240 V, 50/60 Hz, 150 mA
 Output: 5V, 400 mA
 Lithium 750 mAh

BATTERY:
RADIO WAVES:
 THIS DEVICE MEETS INTERNATIONAL GUIDELINES FOR EXPOSURE TO RADIO WAVES
 Your mobile device is a radio transmitter and receiver; it is designed not to exceed the limits for exposure to radio waves (radio frequency electromagnetic fields) recommended by international guidelines. The guidelines were developed by an independent scientific organization (ICNIRP) and include a substantial safety margin designed to assure the safety of all persons, regardless of age and health. The radio wave exposure guidelines use a unit of measurement known as the Specific Absorption Rate, or SAR. The SAR limit for mobile devices is 1.6 W/kg. Tests for SAR are conducted using standard operating positions with the device transmitting at its highest certified power level in all tested frequency bands. The highest SAR values under the ICNIRP guidelines for this device model are:

Maximum SAR for this model and conditions under which it was recorded.		
Head SAR	GSM 850	1.17 W/kg
Body-worn SAR	GSM 850	1.19 W/kg

During use, the actual SAR values for this device are usually well below the values stated above. This is because, for purposes of system efficiency and to minimize interference on the network, the operating power of your mobile device is automatically decreased when full power is not needed for the call. The lower the power output of the device, the lower its SAR value.
 Body-worn SAR testing has been carried out at a separation distance of 1.5 cm. To meet RF exposure guidelines during body-worn operation, the device should be positioned at least this distance away from the body. If you are not using an approved accessory ensure that whatever product is used is free of any metal and that it positions the cellphone the indicated distance away from the body.
 The World Health Organization has stated that present scientific information does not indicate the need for any special precautions for the use of mobile devices. They recommend that if you are interested in further reducing your exposure then you can easily do so by limiting your usage or simply using a hands-free kit to keep the device away from the head and body.

- Unable to receive incoming calls**
 - Make sure your cellphone is switched on and connected to a network (check for overloaded or unavailable network)
 - Check your subscription status with your operator (credit, SIM card valid, etc.)
 - Make sure you have not forwarded incoming calls
 - Make sure that you have not barred certain calls

- The caller's name does not appear when a call is received**
 - Check that you have subscribed to this service with your operator
 - Your caller has concealed his/her number

- The sound quality of the calls is not optimal**
 - You can adjust the volume during a call by means of the key
 - Check the network strength

- I am unable to use the features described in the manual**
 - Check with your operator to make sure that your subscription includes this service
 - Make sure this feature does not require an Alcatel accessory

- When I select a number from my directory, the number is not dialled**
 - Make sure that you have correctly recorded the number in your file
 - Make sure that you have selected the country prefix when calling a foreign country

- I am unable to create a file in my directory**
 - Make sure that your SIM card directory is not full; delete some files or save the files in the product directory (i.e. your professional or personal directories)

For more information you can go to www.alcatel-mobilephones.com
 Additional information about electromagnetic fields and public health are available on the following site: <http://www.who.int/peh-emf>.

Note: This equipment has been tested and found to comply with the limits for a Class B digital device pursuant to part 15 of the FCC Rules. These limits are designed to provide reasonable protection against harmful interference in a residential installation. This equipment generates, uses and can radiate radio frequency energy and, if not installed and used in accordance with the instructions, may cause harmful interference to radio communications. However, there is no guarantee that interference to radio or television reception, which can be determined by turning the equipment off and on, the user is encouraged to try to correct the interference by one or more of the following measures:
 - Reorient or relocate the receiving antenna.
 - Increase the separation between the equipment and receiver.
 - Connect the equipment into an outlet on a circuit different from that to which the receiver is connected.
 - Consult the dealer or an experienced radio/TV technician for help.

Changes or modifications not expressly approved by the party responsible for compliance could void the user's authority to operate the equipment.
 For the receiver devices associated with the operation of a licensed radio service (e.g. FM broadcast), they bear the following statement:
 This device complies with Part 15 of the FCC Rules. Operation is subject to the condition that this device does not cause harmful interference.
 For other devices, they bear the following statement:
 This device complies with Part 15 of the FCC Rules. Operation is subject to the following two conditions:

- (1) This device may not cause harmful interference
 - (2) This device must accept any interference received, including interference that may cause undesired operation.
- Your cellphone is equipped with a built-in antenna. For optimal operation, you should avoid touching it or degrading it.
 As mobile devices offer a range of functions, they can be used in positions other than against your ear. In such circumstances the device will be compliant with the guidelines when used with headset or usb data cable. If you are using another accessory ensure that whatever product is used is free of any metal and that it positions the cellphone at least 1.5 cm away from the body.

- LICENCES**
 is a registered trademark of Obigo AB.

eZiText™ and Zi™ are trademarks of Zi Corporation and/or its ZICorporation Affiliates.

- My callers are unable to leave messages on my voicemail**
 - Contact your network operator to check service availability
- I cannot access my voicemail**
 - Make sure your operator's voicemail number is correctly entered in "My numbers"
 - Try later if the network is busy

- I am unable to send and receive messages MMS, Vox MMS**
 - Check your cellphone memory available as it might be full
 - Contact your network operator to check service availability and check MMS parameters
 - Verify the server center number or your MMS profile with your operator
 - The server center may be saturated; try again later

- The icon is displayed on my standby screen**
 - You have saved too many short messages on your SIM card; delete some of them or archive them in the product memory

- "No service" is displayed**
 - You are outside of the network coverage area

- I have already entered 3 incorrect PIN codes**
 - Contact your network operator to obtain the PUK code (Personal Unblocking Key)

- I am unable to download new files**
 - Check for free space
 - Delete some files
 - Check your subscription status with your operator

Hearing Aid Compatibility
 Your cellphone is rated: "For Hearing Aid", to assist hearing device users in finding cellphones that may be compatible with their hearing devices. This device is HAC M3 compatible.
 For more information please refer to "Hearing Aid Compatibility with Mobile Phones" leaflet or visit our website <http://www.alcatel-mobilephones.com/>

General information

- **Website:** www.alcatel-mobilephones.com
- **Hot Line Number:** see "TCT Mobile Services" leaflet or go to our Internet site.

On our Internet site, you will find our FAQ (Frequently Asked Questions) section. You can also contact us by e-mail to ask any questions you may have.

An electronic version of this user guide is available in English and other languages according to availability on our server: www.alcatel-mobilephones.com

Your cellphone is a transceiver that operates on GSM networks with 850 and 1900 MHz bands.

Protection against theft ⁽¹⁾
 Your cellphone is identified by an IMEI (cellphone serial number) shown on the packaging label and in the product's memory. We recommend that you note the number the first time you use your cellphone by entering * # 0 6 # and keep it in a safe place. It may be requested by the police or your operator if your cellphone is stolen. This number allows your cellphone to be blocked preventing a third person from using it, even with a different SIM card.

Disclaimer
 There may be certain differences between the user manual description and the cellphone's operation, depending on the software release of your cellphone or specific operator services.

TCT Mobile shall not be held legally responsible for such differences, if any, nor for their potential consequences, which responsibility shall be borne by the operator exclusively.

⁽¹⁾ Contact your network operator for service availability.

- My cellphone is frozen, can't power on**
 - Make sure your battery is not completely used up or damaged.
 - Remove your battery, remove your SIM card then reinstall them to power on again, if still does not work;
 - Hold down # key and press Power on/off key for a while to reset the cellphone.

ALL User cellphone data: contacts, photos, messages and files, downloadable applications like Java games will be lost permanently.

- How to make your battery last longer**
 - Make sure you follow the complete charge time (minimum 3 hours)
 - After a partial charge, the battery level indicator may not be exact. Wait for at least 20 minutes after removing the charger to obtain an exact indication.
 - Switch on the backlight upon request.
 - Extend email auto-check interval to as long as possible.
 - Update weather info. upon demand manually or set its auto-check interval longer.