

Quick Start Guide

For more information about how to use the cellphone, please go to www.alcatelone-touch.com to download complete user manual. Moreover, from the website you can also consult FAQ, realize software upgrade etc.

ALCATEL one touch

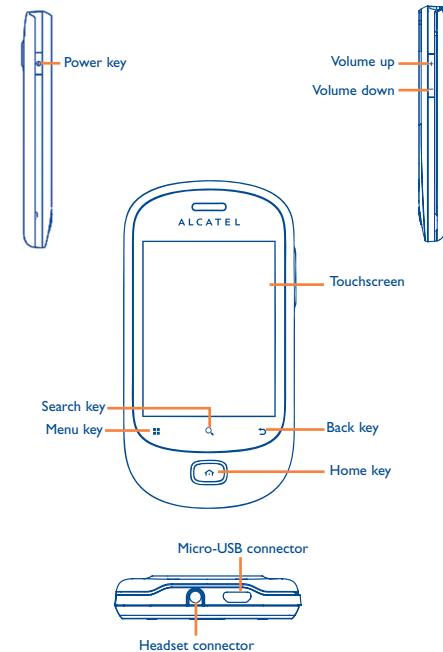
English - CJB31R1ALAAB

Table of contents

- 1 Your cellphone.....3
- 2 Text input.....14
- 3 Phone call.....16
- 4 Contacts.....17
- 5 Messaging.....18
- 6 Email.....20
- 7 Getting connected.....21
- 8 Locate my location using GPS satellites.....23
- 9 Data backup.....24
- 10 Factory data reset.....24
- 11 Applications.....25
- 12 Making the most of your cellphone.....25

Your cellphone

1.1 Keys and connectors



- On Home screen, press to quickly access **Settings** menu or Notification panel; to launch quick search; to customize your Home screen by adding applications or changing wallpaper/theme.
 - On other screens, press to view options list.
- Press: Light up the screen
Return to the Home screen or back to the central Home screen if it is extended.
- When screen turns dark, the **Home** key will blink when there is missed call, incoming message or events reminder alert.
- Press & hold: Enter the recently used applications list.
Go back to the previous menu or screen.
- Press: End a call
Lock the screen
Light up the screen
- Press & hold: When cellphone is off, power on the cellphone.
When cellphone is on, enter cellphone options: Silent mode, Airplane mode, Power off.
- Press to adjust the Volume (in call/media playing mode)
- Open Search bar for searching within an application, the cellphone or web.

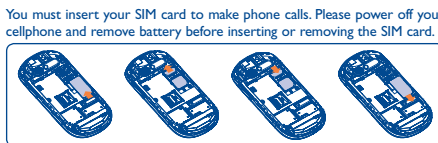
1.2 Getting started

1.2.1 Set-up

Removing or installing the back cover

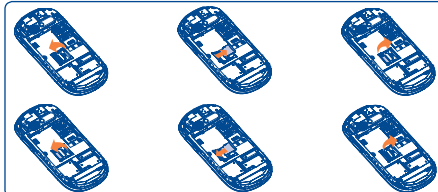


Inserting or removing the SIM card



Place the SIM card with the chip facing downwards and slide it into its housing. Make sure that it is correctly inserted. To remove the card, press and slide it out.

Installing and removing the MicroSD card



To release the microSD card holder, slide it in the direction of the arrow and lift it. Then insert the microSD card with the golden contact downward. Finally, turn down the microSD holder and slide it in the opposite direction to lock it.

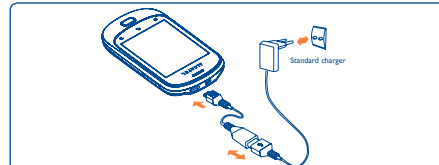
The MicroSD card may contain some third party applications.

Installing or removing the battery



- Insert and click the battery into place, then close the cellphone cover.
- Unclip the cover, then remove the battery.

Charging the battery



Connect the battery charger to your cellphone and outlet respectively.

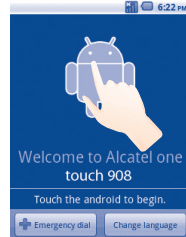
To reduce power consumption and energy waste, when battery is fully charged, disconnect your charger from the plug; switch off Wi-Fi, GPS, Bluetooth or background-running applications when not in use; reduce the backlight time, etc.

1.2.2 Power on your cellphone

Hold down the **Power** key until the cellphone powers on. It will take some seconds before the screen lights up.

Set up your cellphone for the first time

The first time you power on the cellphone, you are required to touch the Android logo to begin and then sign into your Google account to synchronize email, contacts, calendar and other Google applications (1).



- Enter your user name and password, then touch **Sign in**. If you forget your password, you can go to <http://www.google.com/> to retrieve it. If you don't own a Google Account, you are prompted to create one by touching **Create**.
- Read the setup information on the screen.
- Mark/Unmark the check box to choose whether you want to take advantage of Google's location service, then touch **Next**.
- Set up the date and time, then touch **Next**.
- Touch **Finish setup**.

This initial set up can be skipped and enabled via **Settings** > **Accounts & sync**.

In power on screen without SIM card inserted, you can also connect to a Wi-Fi network to sign into your Google account and to use some features.

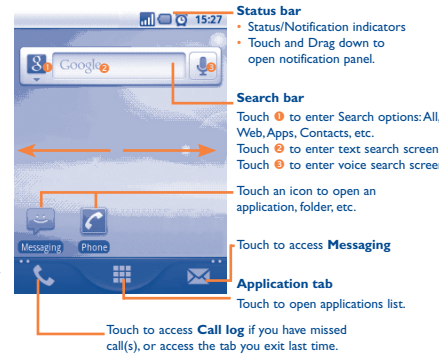
(1) Application availability depends on country and operator.

1.2.3 Power off your cellphone

Hold down the **Power** key from the Home screen until the cellphone options appear, select **Power off**.

1.3 Home screen

You can bring all the items (applications, shortcuts, folders and widgets) you love or use most frequently to your home screen for quick access. Press **Home** key to switch to Home screen.



Home screen is provided in an extended format to allow more space for adding applications, shortcuts etc. Slide the Home screen horizontally left and right to get a complete view of the Home screen. Small dots at the lower left and right of the screen indicate which screen you are viewing.

Touch & hold the small dots, Application tab to display thumbnails, touch the thumbnail to open it. Press **Back** key or touch an empty area to return to Home screen. You can customize the number of home screens by **Settings** > **Home screen settings**.

1.3.1 Using the touchscreen

Touch
To access an application, touch it with your finger.

Touch and Hold
To enter the available options for an item, touch and hold the item. For example, select a contact in Contacts, touch and hold this contact, options list will then appear on screen.

Drag
Place your finger on the screen to drag an object to another location.

Slide/Swipe
Slide the screen to scroll up and down the applications, images, web pages... at your convenience.

Flick
Similar to swiping, but flicking makes it move quicker.

Pinch/Spread
Place your fingers of one hand on the screen surface and draw them apart or together to scale an element on the screen.

Rotate
Automatically change the screen orientation from portrait to landscape by turning the cellphone sideways to have a better screen view.

1.3.2 Status bar

From status bar, you can view both cellphone status (to the right side) and notification information (to the left side). When the status bar is full, "G" icon will appear, touch to display hidden icons.

You can touch twice an empty area on the Home screen to hide/show the Status bar.

Status icons

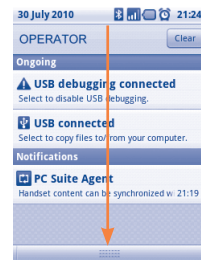
	GPRS is on		GPS is on
	GPRS is in use		Receiving location data from GPS
	GPRS is disabled		Speakerphone is on
	EDGE connected		Roaming
	EDGE in use		No signal
	EDGE is disabled		No SIM card installed
	3G connected		Vibrate mode
	3G in use		Ringer is silenced
	3G is disabled		Cellphone microphone is mute
	HSPA (3G+) connected		Battery is very low
	HSPA (3G+) in use		Battery is low
	HSPA(3G+) is disabled		Battery is partially drained
	Connected to a Wi-Fi network		Battery is full
	Bluetooth is on		Battery is charging
	Connected to a Bluetooth device		Headset connected
	Airplane mode		Signal strength
	Alarm is set		Bluetooth headset battery level indicator

Notification icons

	New Gmail message		More notifications are hidden
	New text or multimedia message		Call in progress (green)
	Problem with text or multimedia message delivery		Call in progress using Bluetooth headset (blue)
	New Google Talk message		Missed call
	New voicemail		Call on hold
	Upcoming event		Call forwarding is on
	Data is synchronizing		Uploading data
	Problem with sign-in or synchronization		Downloading data
	microSD card is full		Download finished
	No microSD card installed		An open Wi-Fi network is available
	Connected to VPN		Cellphone is connected via USB cable
	Disconnected from VPN		Radio is on
	Song is playing		System update available
	USB tethering on		Portable Wi-Fi hotspot on
	Both USB tethering and portable hotspot on		

Notification panel

Touch and drag down the Status bar or press **Menu** key and touch **Notifications** to open the notification panel. Touch and drag up to close it.



Touch **Clear** to clear all event-based notifications (other ongoing notifications will remain).

1.3.3 Search bar

The cellphone provides a Search function which can be used to locate information within applications, the cellphone or the web.

1.3.4 Lock/Unlock your screen

To protect your cellphone and privacy, you can lock the cellphone screen by creating a variety of patterns, PIN or password etc.

1.3.5 Personalize your home screen

Touch and hold an empty area or press **Menu** key and touch **Add** on the Home screen, you can add shortcuts, widgets or folders to the Home screen.

Reposition

Touch and hold the item to be repositioned to activate the Move mode, drag the item to desired position, then release. Hold the icon on the left or right edge of the screen to drag the item to another Home screen page.

Remove

Touch and hold the item to be removed to activate the Move mode, drag the item to the top of the Application tab, which will then turn red, and release.

Wallpaper customization
Touch and hold an empty area or press **Menu** key and touch **Wallpaper** on the Home screen to customize wallpaper.

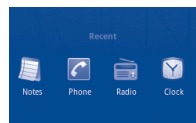
Theme customization
Touch and hold an empty area or press **Menu** key and touch **Themes** on the Home screen to customize themes.

1.3.6 Application tab

Touch from Home screen to enter applications list.
To return to the Home screen, press **Home** key.

Consult recently-used applications

To consult recently-used applications, you can press and hold the **Home** key from Home screen. Touch an icon in the window to open the related application.



1.3.7 Volume adjustment

You can set ringer, media and cellphone ringtone volume to your preference by **Volume up/down** key, or **Settings** menu.

1.4 Applications list

The Applications list contains all pre-embedded and newly installed applications.

To access the Applications list, touch Application tab from Home screen. To return to Home screen, press **Home** key.

1.4.1 Normal mode and sort mode

Applications can be managed in two modes. To switch between two modes, press **Menu** key from applications list screen, and touch **Switch view**.

Normal mode (default)

All applications are listed in alphabetical order.

Sort mode

All applications are sorted by several categories.

1.4.2 Categories management (1)

There are 8 categories in total: 5 categories is predefined, 3 categories can be added.

Press **Menu** key, and select **Edit** to enter edit mode. Within edit mode you can now customize categories.

2 Text input

2.1 Using Onscreen Keyboard

Onscreen keyboard will display automatically when a program requires entering text or numbers.

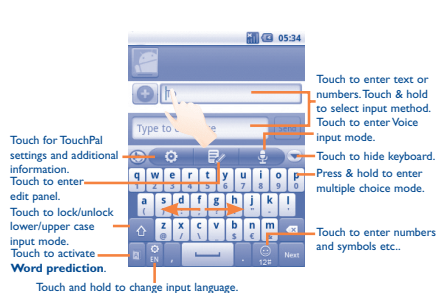
Onscreen keyboard settings

Press **Menu** key from Home screen, select **Settings** > **Language & keyboard** > **TouchPal Input** (or **Android keyboard**), a series of settings are available for your selection. You could scroll the keyboard to change keyboard style.

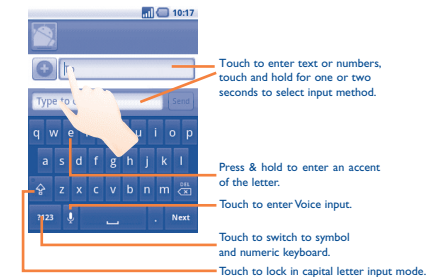
Adjust the onscreen keyboard orientation

Turn the cellphone sideways or upright to adjust the onscreen keyboard orientation. You can also adjust it by settings (Press **Menu** key on **Home screen** > **Settings** > **Display**).

2.1.1 TouchPal Input



2.1.2 Android keyboard



2.2 Text editing

You can edit the text you have entered.

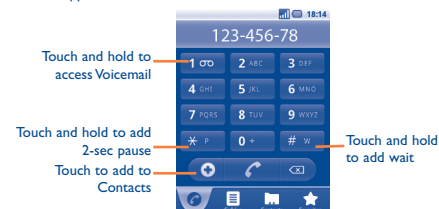
- Touch and hold text you have entered
- Options list pops up
- Select the operation you need (**Select all**, **Select text**, **Cut all**, **Copy all**, etc.)

3 Phone call

3.1 Placing a call

User can easily launch a call using **Phone**. Enter this menu using one of the following two ways:

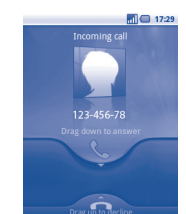
- Touch from Home screen.
- Touch Application tab from Home screen and select **Phone**.



Enter the desired number from keyboard directly or select a contact from **Contacts**, **Call log** or **Favorites** by touching tabs, then touch to place the call. The number you entered can be saved to **Contacts** by pressing **Menu** key and touching **Add to Contacts** or touch.

If you make a mistake, you can delete the incorrect digits by touching **Del**.
To hang up a call, press **Power** key.

3.2 Answering or rejecting a call



When you receive an incoming call, drag down the green cellphone icon to answer. Hang up the call by pressing **Power** key.

3.3 Consulting your call memory

You can access your call memory by touching Application tab from the Home screen and touching **Call log** to view call history in categories of **Missed calls**, **Outgoing calls**, and **Incoming calls**.

4 Contacts.....

You can view and create contacts on your cellphone and synchronize these with your Gmail contacts or other applications on the web or on your cellphone.

When using **Contacts** for the first time you are required to add new contacts, import contacts from SIM card or synchronize contacts from other application accounts to cellphone.

4.1 Adding a contact

Touch Application tab on the Home screen, select **Contacts**, then press **Menu** key from contacts list screen and touch **New contact**.

4.2 Importing, exporting and sharing contacts

From Contacts screen, press **Menu** key to open contacts list option menu, touch **Import/Export**, then select **Import from SIM card**, **Export to SIM card**, **Import from SD card** or **Export to SD card** or **Share visible contacts**.

To import/export a single contact from/to SIM card, touch the contact you want to import/export, then touch **OK** to confirm.

To import/export all contacts from/to SIM card, mark **Select all** check box, then touch **OK** to confirm.

You can share a single contact or contacts with others by sending the contact's vCard to them via Bluetooth, MMS, Email, etc.

Touch a contact you want to share, press **Menu** key and touch **Share** from contact details screen, then select the application to perform this action.

4.3 Synchronizing contacts in multiple accounts

Contacts, data or other information can be synchronized from multiple accounts, depending on the applications installed on your cellphone.

5 Messaging.....

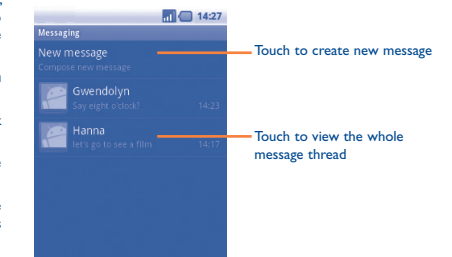
You can create, edit and receive SMS and MMS with this cellphone.

To access this feature, touch Application tab from Home screen, then select **Messaging**.

All messages you receive or send out can only be saved in phone memory. To consult messages stored in SIM card, press **Menu** key from Messaging screen, then touch **Settings** > **Manage SIM messages**.

5.1 Write message

On message list screen, touch **New message** to write text/multimedia messages.



Sending a text message

Enter cellphone number of the recipient on **To** bar or touch to add recipients, touch **Type to compose bar** to enter the text of the message. When finished, touch **Send** to send the text message.

An SMS of more than 160 characters will be charged as several SMS. Specific letters (accent) will also increase the size of the SMS, this may cause multiple SMS to be sent to your recipient.

Sending a multimedia message

MMS enables you to send video clips, images, photos, animations (show as static, not dynamic), slides and sounds to other compatible mobiles and e-mail addresses.

An SMS will be converted to MMS automatically when media files (image, video, audio, slides, etc.) are attached or Subject or email addresses added.

6 Email

Besides your Gmail account, you can also set-up external POP3 or IMAP email accounts in your cellphone.

To access this function, touch Application tab from Home screen, then select **Email**.

An email wizard will guide you through the steps to set-up an email account.

- Enter the email address and password of the account you want to set-up.
- Touch **Next**. If the account you entered is not provided by your service provider in the cellphone, you will be prompted to go to the email account settings screen to enter settings manually. Or you can touch **Manual setup** to directly enter the incoming and outgoing settings for the email account you are setting up.

- Enter the account name and display name in outgoing emails.
- Touch **Done**.
- To add another email account, you can press **Menu** key and touch **Add account** to create.

To create and send emails

- Press **Menu** key from Inbox screen, and touch **Compose**.
- Enter recipient(s)'s email address in **To** field, and if necessary, press **Menu** key and touch **Add Cc/Bcc** to include a copy or a blind copy to the message.
- Enter the subject and content of the message.

- Press **Menu** key, touch **Add attachment** to send an attachment to the receiver.
- Finally, touch **Send**.

- If you do not want to send the mail right away, you can touch **Save as draft** or press **Back** key to save a copy.

(1) For more information, please view the complete user manual.

7 Getting connected.....

To connect to the Internet with this cellphone, you can use GPRS/EDGE/3G networks or Wi-Fi, whichever is most convenient.

7.1 Connecting to the Internet

7.1.1 GPRS/EDGE/3G

The first time you turn on your cellphone with SIM card inserted, it will automatically configure network service: GPRS, EDGE or 3G.

To check the network connection you are using, press **Menu** key on Home screen, then touch **Settings|Wireless & networks|Mobile networks|2G/3G options|Network operators** or **Access Point Names**.

7.1.2 Wi-Fi

Using Wi-Fi, you can connect to the Internet when your cellphone is within range of a wireless network. Wi-Fi can be used on cellphone even without a SIM card inserted.

To turn Wi-Fi on and connect to a wireless network

- Press **Menu** key from Home screen.
- Touch **Settings|Wireless & networks|Wi-Fi**.
- Mark/Unmark the checkbox to turn on/off Wi-Fi.
- Touch **Wi-Fi settings**. The detailed information of detected Wi-Fi networks is displayed in the Wi-Fi networks section.
- Touch a Wi-Fi network to connect. If the network you selected is secured, you are required to enter a password or other credentials (you may contact network operator for details). When finished, touch **Connect**.

All data you have downloaded are stored in **File Manager**, where you can view media files (videos, photos, music and others), rename files, install applications into your cellphone, etc.

7.2 Browser.....

Using Browser, you can enjoy surfing the Web.

To access this function, touch Application tab from Home screen, then touch **Browser**.

To go to a web page

On Browser screen, touch the URL box at the top, enter the address of the web page, then touch **Go**.

7.3 Connecting to a computer via USB

With the USB cable, you can transfer media files and other files between your cellphone's MicroSD card and the computer.

To connect/disconnect your cellphone to/from the computer

To connect your cellphone to the computer:

- Use the USB cable that came with your cellphone to connect the cellphone to a USB port on your computer. You will receive a notification that the USB is connected.

- Open the Notifications panel and touch **USB connected**.

- Touch **Mount** in the dialog that opens to confirm that you want to transfer files.

To disconnect:

- Unmount the microSD card on your computer.
- Open the Notifications panel and touch **Turn off USB storage**.
- Touch **Turn off** in the dialog that opens.

To locate data you have transferred or downloaded in your MicroSD card:

- Touch Application tab from Home screen to open the applications list.
- Touch **File Manager**.

All data you have downloaded are stored in **File Manager**, where you can view media files (videos, photos, music and others), rename files, install applications into your cellphone, etc.

7.4 Sharing your cellphone's mobile data connection

You can share your cellphone's mobile data connection with a single computer via a USB cable (USB tethering) or with up to eight devices at once by turning your cellphone into a portable Wi-Fi hotspot.

To turn on USB tethering or Portable Wi-Fi hotspot

- Press **Menu** key from Home screen.
- Touch **Settings|Wireless & networks|Tethering & portable hotspot**.
- Mark the checkbox of **USB tethering** or **Portable Wi-Fi hotspot** to activate this function.

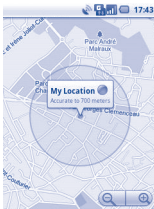
The functions may incur additional network charges from your network operator. Extra fees may also be charged in roaming areas.

8 Locate my location using GPS satellites.....

To activate your cellphone's global positioning system (GPS) satellite Receiver:

- Press **Menu** key from Home screen
- Touch **Settings|Location & security|Use GPS satellites**
- Mark the checkbox

When open Maps, you can find your location:



Use your cellphone's GPS satellites receiver to pinpoint your location within an accuracy as close as several meters ("street level"). The process of accessing the GPS satellite and setting your cellphone's precise location for the first time will require up to 5 minutes. You will need to stand in a place with a clear view of the sky and avoid moving. After this, GPS will only need 20-40 seconds to identify your precise location.

9 Data backup.....

This cellphone enables you to back up your cellphone's settings and other application data to Google Servers, with your Google Account. If you replace your cellphone, the settings and data you've backed up are restored onto the new cellphone the first time you sign in with your Google Account.

To activate this function:

- Press **Menu** key from Home screen
- Touch **Settings|Privacy|Back up my data**
- Mark the checkbox

Activated this function, a wide variety of settings and data are backed up, including your Wi-Fi passwords, bookmarks, a list of the applications you've installed, the words you've added to the dictionary used by the onscreen keyboard, and most of the settings that you configure with the Settings application. If you deactivated this option, you stop backing up your settings, and any existing backups are deleted from Google Servers.

10 Factory data reset....

To activate factory data reset:

- Press **Menu** key from Home screen
- Touch **Settings|Privacy|Factory data reset**
- Mark the checkbox

Phone reset will erase all of your personal data from internal phone storage, including information about your Google Account, any other accounts, your system and application settings, and any downloaded applications. Resetting the cellphone does not erase any system software updates you've downloaded or any files on your microSD card, such as music or photos. If you reset the cellphone in this way, you're prompted to re-enter the same kind of information as when you first started Android.

When you are unable to power on your cellphone, there is another way to perform a factory data reset by using hardware keys. Hold down **Volume up** key and press **Power** key at same time until the screen lights up⁽¹⁾.

11 Applications.....

With this cellphone, some build-in Google applications and other third party applications are available for your convenience.

With the built-in applications, you can

- Communicate with friends
- Exchange messages or emails with friends
- Track your location, view traffic situations, search for locations and get navigation information to your destination
- Download more applications from Android Market and more.

For more information about these applications, please check user manual online: www.alcatelone-touch.com.

12 Making the most of your cellphone.....

You can download software upgrade for free from the website: www.alcatelone-touch.com.

12.1 PC suite

The PC suite includes:

- **Contacts**

It allows you to back up contact entries so that you don't have to worry about losing, breaking, switching cellphone or changing service providers.

- **Messages**

It frees you from painstakingly inputting text on the keypads. All of your messages are easily accessible and well-organized.

⁽¹⁾ For more information, please view the complete user manual.

• Photos

It allows you to easily import photos from PC or the handset and organize them in different albums for better management.

• Videos

It allows you to insert video files from PC for playback and then upload to handset folder.

• Music

It allows you to quickly search your Favorites in PC, manage the ultimate Library, and enjoy the easiest digital jukebox in your own mobile way.

• Application

It allows you to import downloaded mobile applications and have them installed into your handset upon synchronization.

• File

It allows you to organize Handset files with just a few clicks and files on the Handset can be at where you want them to be.

• Sync

It allows you to synchronize the Contacts and Calendar in Outlook/Outlook Express and Handset.

Supported Operating Systems

Windows XP/Vista/Windows 7.

12.2 One touch Upgrade

Using One touch Upgrade tool you can update your cellphone's software from your PC.

Download One touch Upgrade from ALCATEL website (<http://www.alcatelone-touch.com/>) and install it on your PC. Launch the tool and update your cellphone by following the step by step instructions (refer to the User Guide provided together with the tool). Your cellphone's software will now have the latest software.

All personal information will be permanently lost following the update process. We recommend you backup your personal data using PC Suite before upgrading.

Safety and use.....

We recommend that you read this chapter carefully before using your cellphone. The manufacturer disclaims any liability for damage, which may result as a consequence of improper use or use contrary to the instructions contained herein.

• TRAFFIC SAFETY:
Given that studies show that using a cellphone while driving a vehicle constitutes a real risk, even when the hands-free kit is used (car kit, headset...), drivers are requested to refrain from using their cellphone when the vehicle is not parked. Check the laws and regulations on the use of wireless cellphones and their accessories in the areas where you drive. Always obey them. The use of these devices may be prohibited or restricted in certain areas.

When driving, do not use your cellphone and headphone to listen to music or to the radio. Using a headphone can be dangerous and forbidden in some areas.

When switched on, your cellphone emits electromagnetic waves that can interfere with the vehicle's electronic systems such as ABS anti-lock brakes or airbags. To ensure that there is no problem:

- do not place your cellphone on top of the dashboard or within an airbag deployment area,
- check with your car dealer or the car manufacturer to make sure that the car's electronic devices are shielded from cellphone RF energy.

• CONDITIONS OF USE:

You are advised to switch off the cellphone from time to time to optimize its performance.

Remember to abide by local authority rules of cellphone use on aircrafts. Operational Warnings: Obey all posted signs when using mobile devices in public areas.

Follow Instructions to Avoid Interference Problems: Turn off your mobile device in any location where posted notices instruct you to do so. In an aircraft, turn off your mobile device whenever instructed to do so by airline staff. If your mobile device offers an airplane mode or similar feature, consult airline staff about using it in flight.

Switch the cellphone off when you are in health care facilities, except in designated areas. As with many other types of equipment now in regular use, cellphones can interfere with other electrical or electronic devices, or equipment using radio frequency.

Switch the cellphone off when you are near gas or flammable liquids. Strictly obey all signs and instructions posted in a fuel depot, gas station, or chemical plant, or in any potentially explosive atmosphere.

When the cellphone is switched on, it should be kept at least 15 cm from any medical device such as a pacemaker, a hearing aid or insulin pump. In particular when using the cellphone you should hold it against the ear on the opposite side to the device, if any.

Read and follow the directions from the manufacturer of your implantable medical device. If you have any questions about using your mobile device with your implantable medical device, consult your healthcare provider.

To avoid hearing impairment, answer the call before holding your cellphone to your ear. Also move the handset away from your ear while using the "hands-free" option because the amplified volume might cause hearing damage.

It is recommended to have proper supervision while small children use your cellphone.

When replacing the cover please note that your cellphone may contain substances that could create an allergic reaction. Always handle your cellphone with care and keep it in a clean and dust-free place.

Do not allow your cellphone to be exposed to adverse weather or environmental conditions (moisture, humidity, rain, infiltration of liquids, dust, sea air, etc.). The manufacturer's recommended operating temperature range is -10°C (14°F) to +55°C (131°F) (the max value depends on device, materials and housing paint/texture).

Over 55°C (131°F) the legibility of the cellphone's display may be impaired, though this is temporary and not serious.

Do not open or attempt to repair your cellphone yourself. Do not drop, throw or try to bend your cellphone.

Do not use the cellphone if the glass made screen, is damaged, cracked or broken to avoid any injury.

Do not paint it.

Use only batteries, battery chargers, and accessories which are recommended by TCT Mobile Limited and its affiliates and are compatible with your cellphone model. TCT Mobile Limited and its affiliates disclaim any liability for damage caused by the use of other chargers or batteries.

Your cellphone should not be disposed of in a municipal waste. Please check local regulations for disposal of electronic products.

Remember to make back-up copies or keep a written record of all important information stored in your cellphone.

Some people may suffer epileptic seizures or blackouts when exposed to flashing lights, or when playing video games. These seizures or blackouts may occur even if a person never had a previous seizure or blackout. If you have experienced seizures or blackouts, or if you have a family history of such occurrences, please consult your doctor before playing video games on your cellphone or enabling a flashing-lights feature on your

cellphone. Parents should monitor their children's use of video games or other features that incorporate flashing lights on the cellphones. All persons should discontinue use and consult a doctor if any of the following symptoms occur: convulsion, eye or muscle twitching, loss of awareness, involuntary movements, or disorientation. To limit the likelihood of such symptoms, please take the following safety precautions:

- Play at the farthest distance possible from the screen.
- When you play games on your cellphone, you may experience occasional discomfort in your hands, arms, shoulders, neck, or other parts of your body. Follow these instructions to avoid problems such as tendinitis, carpal tunnel syndrome, or other musculoskeletal disorders:

- Take a minimum of a 15-minute break every hour of game playing.
- If your hands, wrists, or arms become tired or sore while playing, stop and rest for several hours before playing again.
- If you continue to have sore hands, wrists, or arms during or after playing, stop the game and see a doctor.

Prolonged exposure to music at full volume using the music player may damage your hearing. Set your cellphone's volume to it's lowest setting prior to inserting headphones in your ears and adjust the volume to your preference. Only use headphones that are recommended by TCT Mobile Limited and it's affiliates.

• PRIVACY:

Please note that you must respect the laws and regulations in force in your jurisdiction or other jurisdiction(s) where you will use your cellphone regarding taking photographs and recording sounds with your cellphone. Pursuant to such laws and regulations, it may be strictly forbidden to take photographs and/or to record the voices of other people or any of their personal attributes, and reproduce or distribute them, as this may be considered to be an invasion of privacy.

It is the user's sole responsibility to ensure that prior authorization be obtained, if necessary, in order to record private or confidential conversations or take a photograph of another person; the manufacturer, the seller or vendor of your cellphone (including the operator) disclaim any liability which may result from the improper use of the cellphone.

• BATTERY AND ACCESSORIES:

Before removing the battery from your cellphone, please make sure that the cellphone is switched off.

Observe the following precautions for battery use:

- Do not attempt to open the battery (due to the risk of toxic fumes and burns).
- Do not puncture, disassemble or cause a short-circuit in a battery.
- Do not burn or dispose of a used battery in the garbage or store it at temperatures above 60°C (140°F).

Observe the following precautions for battery use:

- Do not attempt to open the battery (due to the risk of toxic fumes and burns).
- Do not puncture, disassemble or cause a short-circuit in a battery.
- Do not burn or dispose of a used battery in the garbage or store it at temperatures above 60°C (140°F).

Observe the following precautions for battery use:

- Do not attempt to open the battery (due to the risk of toxic fumes and burns).
- Do not puncture, disassemble or cause a short-circuit in a battery.
- Do not burn or dispose of a used battery in the garbage or store it at temperatures above 60°C (140°F).

I cannot access my voicemail

- Make sure your operator's voicemail number is correctly entered
- Try later if the network is busy

I am unable to send and receive MMS

- Check your cellphone memory available as it might be full
- Contact your network operator to check service availability and check MMS parameters
- Verify the server center number or your MMS profile with your operator
- The server center may be swamped; try again later

"No service" is displayed

- You are outside of the network coverage area

I have already entered 3 incorrect PIN codes

- Contact your network operator to obtain the PUK code (Personal Unlocking Key)

I am unable to connect my cellphone to my computer

- Install Alcatel's PC suite first of all
- Open Notification panel to check if the PC Suite Agent has activated
- Check that you have marked the checkbox of USB debugging in **Settings|Applications|Development|USB debugging**
- Check that your computer system meets the requirements for Alcatel's PC Suite installation

I am unable to download new files

- Check for free space of your MicroSD card
- Delete some files
- Check your subscription status with your operator

The cellphone can't be detected by others via Bluetooth

- Make sure that Bluetooth is turned on and your cellphone is visible to other users

How to make your battery last longer

- Make sure you followed the complete charge time (minimum 3 hours)
- After a partial charge, the battery level indicator may not be exact. Wait for at least 20 minutes after removing the charger to obtain an exact indication
- Switch on the backlight upon request
- Extend email auto-check interval as long as possible
- Exit background-running applications if they are not being used for a long time
- Deactivate Bluetooth, Wi-Fi, or GPS when not in use

- Contact your network operator to check service availability

Batteries must be disposed of in accordance with locally applicable environmental regulations. Only use the battery for the purpose for which it was designed. Never use damaged batteries or those not recommended by TCT Mobile Limited and/or its affiliates.

This symbol on your cellphone, the battery and the accessories means that these products must be taken to collection points at the end of their life:

- Municipal waste disposal centers with specific bins for these items of equipment
- Collection bins at points of sale.

They will then be recycled, preventing substances being disposed of in the environment, so that their components can be reused.

In European Union countries: These collection points are accessible free of charge. All products with this sign must be brought to these collection points.

In non European Union jurisdictions: Items of equipment with this symbol are not to be thrown into ordinary bins if your jurisdiction or your region has suitable recycling and collection facilities; instead they are to be taken to collection points for them to be recycled.

In the United States you may learn more about CTIA's Recycling Program at www.recyclewirelessphones.com

CAUTION: RISK OF EXPLOSION IF BATTERY IS REPLACED BY AN INCORRECT TYPE. DISPOSE OF USED BATTERIES ACCORDING TO THE INSTRUCTIONS

• CHARGERS
Home A.C./ Travel chargers will operate within the temperature range of: 0°C (32°F) to 40°C (104°F).

The chargers designed for your cellphone meet with the standard for safety of information technology equipment and office equipment use. Due to different applicable electrical specifications, a charger you purchased in one jurisdiction may not work in another jurisdiction. They should be used for this purpose only.

Characteristics of power supply (depending on the country):
Travel charger: Input: 100-240V, 50/60 Hz, 0.15 A
Output: 5V, 550 mA & 5V, 1A

Battery: Lithium 1300 mAh

- RADIO WAVES:

THIS CELLPHONE MEETS THE GOVERNMENT'S REQUIREMENTS FOR EXPOSURE TO RADIO WAVES.

Your cellphone is a radio transmitter and receiver. It is designed and manufactured not to exceed the emission limits for exposure to radio-frequency (RF) energy. These limits are part of comprehensive guidelines and establish permitted levels of RF energy for the general population. The guidelines are based on standards that were developed by independent scientific organizations through periodic and thorough evaluation of scientific studies. These guidelines include a substantial safety margin designed to ensure the safety of all persons, regardless of age and health.

The exposure standard for cellphones employs a unit of measurement known as the Specific Absorption Rate, or SAR. The SAR limit set by public authorities such as the Federal Communications Commission of the US Government (FCC), or by Industry Canada, is 1.6W/kg averaged over 1 gram of body tissue. Tests for SAR are conducted using standard operating positions with the cellphone transmitting at its highest certified power level in all tested frequency bands.

Although the SAR is determined at the highest certified power level, the actual SAR level of the cellphone while operating can be well below the maximum value. This is because the cellphone is designed to operate at multiple power levels so as to use only the power required to reach the network. In general, the closer you are to a wireless base station antenna, the lower the power output of the cellphone. Before a cellphone model is available for sale to the public, compliance with national regulations and standards must be shown.

The highest SAR value for this model cellphone when tested is 0.957 W/Kg (one touch 908A), 1.03 W/Kg (one touch 908S) for use at the ear and 1.03 W/Kg (one touch 908A), 1.1 W/Kg (one touch 908S) for use close to the body. While there may be differences between the SAR levels of various cellphones and at various positions, they all meet the government requirement for RF exposure. For body-worn operation, the cellphone meets FCC RF exposure guidelines provided that it is used with a non-metallic accessory with the handset at least 10 mm from the body. Use of other accessories may not ensure compliance with FCC RF exposure guidelines.

Additional information on SAR can be found on the Cellular Telecommunications & Internet Association (CTIA) Web site: <http://www.phonefacts.net>

The World Health Organization (WHO) considers that present scientific information does not indicate the need for any special precautions for use of cellphones. If individuals are concerned, they

• LICENCES

microSD

microSD Logo is a trademark.

Bluetooth

The Bluetooth word mark and logos are owned by the Bluetooth SIG, Inc. and any use of such marks by TCT Mobile Limited and its affiliates is under license. Other trademarks and trade names are those of their respective owners.

one touch 908A/one touch 908S Bluetooth QD ID B017986

TouchPal™ and CooTek™ are trademarks of Shanghai HanXiang (CooTek) Information Technology Co., Ltd. and/or its Affiliates.

TouchPal CooTek

Wi-Fi CERTIFIED

The Wi-Fi Logo is a certification mark of the Wi-Fi Alliance.

Your device uses non-harmonised frequency and is intended for use in all European countries. The WLAN can be operated in the EU without restriction indoors, but cannot be operated outdoors in France.

Google, the Google logo, Android, the Android logo, Google Search, Google Maps, Gmail, YouTube, Android Market, Google latitude and Google Talk are trademarks of Google Inc.

Hearing Aid Compatibility

Your cellphone is rated: "For Hearing Aid", to assist hearing device users in finding cellphones that may be compatible with their hearing devices.

one touch 908A is HAC M3 & T3 compatible.

one touch 908S is HAC M3 & T3 compatible.

For more information please refer to "Hearing Aid Compatibility with Mobile Phones" leaflet or visit our website www.tctmobile.com.

General information

- **Website:** www.alcatelone-touch.com
- **Facebook:** <http://www.facebook.com/alcatelone-touchusa>
- **Twitter:** <http://www.twitter.com/alcatel1touch>
- **Hot Line Number:** In the United States, call 877-702-3444 for technical support.

On our Internet site, you will find our FAQ (Frequently Asked Questions) section. You can also contact us by e-mail to ask any questions you may have.

An electronic version of this user guide is available in English and other languages according to availability on our server: www.alcatelone-touch.com

Your cellphone is a transceiver that operates on the following networks:

- one touch 908A: GSM in quad-band (850/900/1800/1900 MHz) or UMTS in dual-band (850/1900 MHz)
- one touch 908S: GSM in quad-band (850/900/1800/1900 MHz) or UMTS in dual-band (850/1900 MHz)

Protection against theft⁽¹⁾

Your cellphone is identified by an IMEI (cellphone serial number)