



one touch | 214A

Your cellphone



- ### 1.1 Keys
- Navigation key** ⁽¹⁾
Confirm an option (press the middle of the key)
Access "Change timing" (long keypress in idle screen)
 - Answer**
Send a call
Access call memory (Redial) (short keypress)
 - Switch on/Switch off the cellphone** (long keypress)
End call
Return to the idle screen
 - Left softkey**
 - Right softkey**
 - Access your voicemail** (long keypress)
0 +
In edit mode
- Short keypress: access the language list
- Long keypress: enter zero
 - From idle screen**
- Short keypress: *
- Long keypress: lock/unlock the keypad
In edit mode:
- Short keypress: change input methods
- Long keypress: access the Symbols table
 - #5**
From idle screen
- Short keypress: #
- Long keypress: activate/deactivate the vibrator
In edit mode:
- Short keypress: (space)
- Long keypress: add a word
 - 5+***
From idle screen
- Short keypress: dial '5'
- Long keypress: switch on/off the torch

- ### 1.2 Idle screen icons
- Battery charge level.**
 - Vibration alert:** your cellphone vibrates, but neither rings nor beeps.
 - Headset connected.**
 - Call forwarding activated:** your calls are forwarded.
 - Alarm clock programmed.**
 - Voicemail message arrived.**
 - FM radio is on.**
 - Unanswered calls.**
 - WAP alerts** ⁽¹⁾.
 - GPRS attached.**
 - GPRS connecting.**
 - Roaming.**
 - Line switching** ⁽¹⁾: indicates the selected line.
 - Level of network reception.**
 - Silence mode:** your cellphone neither rings, beeps nor vibrates.
 - Message unread.**
 - Keypad locked.**

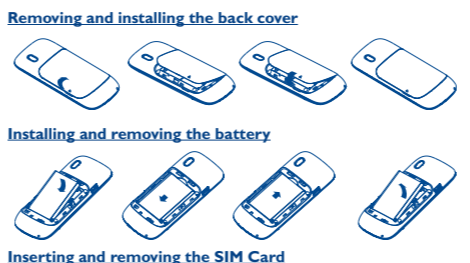
SAR
www.sar-tick.com

This product meets applicable national SAR limits of 2.0 W/kg. The specific maximum SAR values can be found on page 16 of this user guide.
When carrying the product or using it while worn on your body, either use an approved accessory such as a holster or otherwise maintain a distance of 1.5 cm from the body to ensure compliance with RF exposure requirements. Note that the product may be transmitting even if you are not making a phone call.

Prolonged exposure to music at full volume on the music player may damage the listener's hearing. Set your cellphone volume safely. Use only headphones recommended by TCT Mobile Limited and its affiliates.

2 Getting started

2.1 Set-up



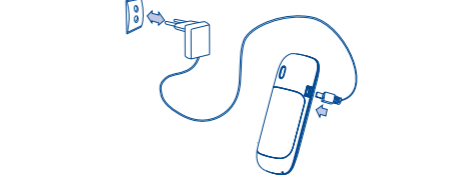
Removing and installing the back cover

Installing and removing the battery

Inserting and removing the SIM Card

Place the SIM card with the chip facing downwards and slide it into its housing. Make sure that it is correctly inserted. To remove the card, press it and slide it out.

Charging the battery



- Connect the battery charger to your cellphone and mains socket respectively
- The charging may take about 20 minutes to start if the battery is flat.
 - Be careful not to force the plug into the socket.
 - Make sure the battery is correctly inserted before connecting the charger.
 - The mains socket must be near to the cellphone and easily accessible (avoid electric extension cables).
 - When using your cellphone for the first time, charge the battery fully (approximately 3 hours). You are advised to fully charge the battery.
 - To reduce power consumption and energy waste, when battery is fully charged, disconnect your charger from the plug; reduce the backlight time, etc.

- The charge is complete when the animation stops.
- ### 2.2 Power on your cellphone
- Hold down the **↶** key until the cellphone powers on.
- ### 2.3 Power off your cellphone
- Hold down the **↶** key from the idle screen.

3 Calls

- ### 3.1 Making a call
- Dial the desired number then press the **☎** key (send key) to place the call. If you make a mistake, you can delete the incorrect digits by pressing the right softkey.
- To hang up the call, press the **↶** key.
- ### Making an emergency call
- If your cellphone is covered by the network, dial emergency number and press the **☎** key (send key) to make an emergency call. This works even without a SIM card and without typing the PIN code or unlocking the keypad ⁽¹⁾.
- ### 3.2 Calling your voicemail
- To access your voicemail, hold down the **| =** key.
- ### 3.3 Receiving a call
- When you receive an incoming call, press the **☎** key (send key) to talk and then hang up using the **↶** key.
- ### 3.4 Available functions during the call
- During a call, you can use your directory, short messages, etc. without losing your correspondent.

ALCATELone touch

⁽¹⁾ Depending on your network operator.

4 Call register

You may go to "Settings" and select "Call register" menu, below options are available:

- ### 4.1 Call memory
- You can access your call memory by pressing the **☎** key (send key) from the idle screen.
- ### 4.2 My numbers
- Type in or modify your cellphone number or the number to access your voicemail and confirm by pressing **☎**. Your cellphone number is usually written on your SIM card.
- ### 4.3 Billing
- You can access different items with this option: **Amount, Duration, GPRS counter, Beep duration.**
- ### 4.4 Call settings
- You can access a number of items with this option: **Call waiting, Call forwarding, Call barring, Caller ID, Auto redial...**
- ### 4.5 Call control
- The menu serves you the dual purposes of cost monitoring and controlling during a call by the settings of "By cost" and "By duration".

5 Directory

To access the directory from the idle screen, press the **☎** key and select the **☎** icon from the menu.

Select the directory in which you wish to create a file, press the "Options" softkey, select "Add contact" then **☎**.

6 Messages

From the main menu select "Messages" to create text message. You can type a message, and you're also able to insert a pre-defined message from "Templates". While writing a message, select "Options" to access all the messaging options. You can save your messages that you send often to "Drafts".

Specific letters (accent) will increase the size of the SMS, this may cause multiple SMS to be sent to your recipient.

7 WAP

Access **WAP** options: **Homepage, Bookmarks, Recent pages, Offline pages, Go to URL, Push inbox and Profiles.**

8 Settings

From the main menu, select the icon menu and select the function of your choice in order to customize your cellphone: **Color, Display, Clock, Keys, Call register** ⁽¹⁾, **More settings.**

9 Tools

- ### 9.1 Calendar
- Once you enter this menu from "Tools", there is a monthly-view calendar for you to keep track of important meetings, appointments, etc. Days with events entered will be marked in color.
- ### 9.2 Alarm
- Your cellphone has a built-in alarm clock with a snooze feature.
- ### 9.3 Calculator
- Hold down the **#5** key to get the decimal point. Confirm with the **☎** key or the left softkey.
- ### 9.4 Fake call
- Protect yourself from annoying situations with the "Fake Call". In this menu, you can set "Caller name/number", "Call time", "Ringtone" and "Image". When the timer reaches the cellphone will ring and display like receiving a real phone call. Press **☎** (Left softkey) key, pretend answering a call, the screen will display just like have an ongoing call. Press **↶** key, pretend reject the call, the call will terminate automatically.
- ### 9.5 Converter
- Unit converter and Currency converter.

9.6 Voice memo

This feature enables you to record a call by selecting "Sound recorder" while communicating. To record a sound, select "Voice memo", then "New record".

9.7 Memory status

It will indicate how much space is used and how much is currently free on your cellphone.

9.8 My shortcuts

Access the shortcuts already programmed. To programme new shortcuts: select "Add" if you want to create a quick access to functions, numbers, or wap bookmarks, etc.

9.9 Flashlight

To light in darkness, you may activate "Flashlight" by below operations:
In idle screen, long keypress **5+*** key to activate the Torch light; select **off** or go back to idle screen then long keypress **5+*** key to deactivate it.

10 Fun

- ### 10.1 Games
- Your Alcatel cellphone may include some games. You could set background music and vibration alert.
- ### 10.2 FM radio
- Your cellphone is equipped with an FM radio ⁽¹⁾ with RDS functionality. You can use the application as a traditional FM radio with automatic tuning and saved channels or with parallel visual information related to the radio program on the display, if you tune to stations that offer Visual Radio service. You can listen to it while running other applications.

⁽¹⁾ The quality of the radio depends on the coverage of the radio station in that particular area.

11 File manager

You will have an access to all audio and visual files stored in cellphone in File manager.

- ### 11.1 My audios
- Choose an audio for an incoming call, a message alert, power on/off ringtone or contact ID.
- ### 11.2 My images
- You can select an image as wallpaper, ON/OFF screen or contact ID.
- ### 11.3 Unknown files
- Store files of unsupported format.
- ### 11.4 Memory status
- See 9.7 on page 10.

14 Latin input mode

To write messages, there are two writing methods:
- Normal: this mode allows you to type a text by choosing a letter or a sequence of characters associated with a key. Press the key several times until the desired letter is highlighted. When you release the key the highlight character is inserted into the text.
- Predictive with the Zi mode: this mode speeds up the writing of your text. Write the word by pressing a key between and **☎** and **☎**. Press the key once and the word will be modified each time you press a key. As you go on, the word will keep changing.
Example: For "Tomorrow", press on the following keys:
8, **6**, **6** = Too -> **6** -> tomorrow
- **☎ +** key in edit mode
Short keypress: access the language list
Long keypress: enter zero

ALCATEL is a trademark of Alcatel-Lucent and used under license by TCT Mobile Limited.
All rights reserved © Copyright 2011 TCT Mobile Limited.
TCT Mobile Limited reserves the right to alter material or technical specification without prior notice.

For more information about how to use the cellphone, please go to www.alcatelone touch.com to download complete user manual (English version only). Moreover, from the website you can also consult FAQ (English version only).

⁽¹⁾ Depending on your network operator.



