

Your cellphone.....



- 1 Information bar
- 2 Desktop
- 3 Send key
- 4 Voicemail key
- 5 Shift key
- 6 Fn key
- 7 Left/right navigation key
- 8 Space key
- 9 Tool bar
- 10 Status bar
- 11 End key
- 12 Vibration key
- 13 Delete key
- 14 Enter key
- 15 Sym key
- 16 Wi-Fi key
- 17 Micro-USB connector
- 18 Headset connector
- 19 Volume key

TCL-8107



创想 感动生活
The Creative Life

English - CJB31GBALAAZ

5 Messages.....



5.1 Conversational On (Off) mode

In conversational on mode, you can view chat history in chronological order. In conversational off mode, you may have access to the following folders: **Inbox**, **Outbox**, **Sent**, **Broadcast SMS**, **Voicemail**, **Drafts**, etc. You can switch between these two modes by selecting **Settings** | **Conversational mode** | **On (Off)**. Conversational mode is set as the default mode and following instructions are based on this mode.

5.2 Create message

Select **Messages** | **Write msg** to create text/multimedia message. An SMS will be converted to MMS automatically when: images, videos, audio, slides or attachments are inserted; Subject, CC/BCC/email address is added; or the message contains more than 8 pages of text.

Timer send

Schedule a SMS/MMS to be sent out at predefined time ("Option" | **Timer send**).

6 Email.....



Your cellphone has an email client with the settings predefined for a few popular email services like - GoogleMail, Yahoo, AOL, etc. Besides this, you can set up other POP3 or IMAP4 email accounts that you may be using.

7 Palringo (1).....



Palringo Instant messaging (IM) allows you to chat with other people using Palringo account. You can also connect to other popular IM services through Palringo, like Yahoo, AIM, GG, ICQ, GTalk, iChat etc. Please note that the services accessible to you will depend on your client version and dynamic Palringo server options.

- Answer/Send a call
- Enter Call log
- Short key press: End a call
Lock the screen
Return to the main screen
- Long key press: Power on/off
- Long key press: Access your voicemail
- Press once: Input a capitalized character
- Press twice: Lock the keyboard in capital letter input mode
- Short key press: Press once: Input a top-half character
Press twice: Lock the keyboard in top-half key input mode
- Fn + B: Access Bluetooth
- Fn + M: Access Music player
- Fn + P: Access Profiles
- Fn + J: Access Java applications
- Press to go left and right
- Short key press: Enter a space
- Long key press: Access language list
- Hold down Fn key, then press space key to select input method
- Enter a dot
- Hold down Fn key, then press sym key to enter symbol table
- Confirm an option
- Enter the next line
- Vibration alert
- Volume up/down
- Scroll up/down
- Press to enter Wi-Fi function

1.1 Status bar icons (1)



Battery charge level



Vibrate alert: your cellphone vibrates, but does not ring or beep with the exception of the alarm.



Bluetooth status (Activated).



Bluetooth status (Connected to an audio device).



Java status (Activated).



Keypad & LCD touch locked.



Keypad & LCD touch unlocked.



Call forwarding activated: your calls are forwarded.



Alarm or appointments programmed.



Level of network reception.



Wi-Fi connected.



Wi-Fi disconnected.



Voicemail message arrived.



Missed calls.



Stopwatch is active.



Radio is on.



Email unread.

(1) The icons and illustrations in this guide are provided for information purposes only.



WAP alerts (1).



Roaming.



Memory card scanning in progress.



Memory card scanning completed.



SIM card unavailable.



Line switching (1): indicates the selected line.



GPRS connection status (Activated).



GPRS connecting.



EDGE attached.



EDGE connecting.



Music player active.



Message receipt in progress.



MMS receipt in progress.



Sending a SMS.



Sending a MMS.



Silence mode: your cellphone does not ring, beep or vibrate with the exception of the alarm.



SMS unread.



MMS unread.



(In red) Message list is full: your cellphone cannot accept any new messages. You must access the message list and delete at least one message on your SIM card.



Flight mode.



A2DP connected.



Broadcast is on.

(1) Depending on your network operator.

1.2 Status list

Tap the status bar and drag down to open, drag up to close.

To open an application, tap it from the list.

1.3 Desktop

Adding items

To add an item from the main menu, you can select one of the following ways:

- Tap and hold an item from the main menu list.
- Tap from the tool bar and select an item.
- Touch and hold an empty area from the main screen, select "Add widgets" from the window that opens, then tap the item you want to add to desktop.

Removing items

Touch and hold the widget you want to remove from the desktop to enter the edit mode, and then tap to remove it, finally tap "Done" to confirm.

Re-organizing items

Touch and hold the widget you want to move from the desktop editing screen until a location frame shows up, then drag it to the desired location, finally tap "Done" to confirm.

Wallpaper

To personalize your wallpaper, you can select one of the following two ways:

- Touch and hold an empty area from the desktop, select "Wallpaper", then tap a folder that displayed to select an image as your wallpaper.
- Tap from the tool bar, then tap a folder to select an image as your wallpaper.

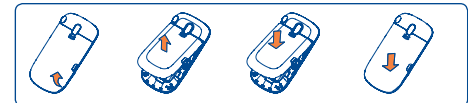
1.4 Toolbar

Toolbar with menu items by default as a shortcut for quick access. Scrolling left and right, you can view more items.

2 Getting started.....

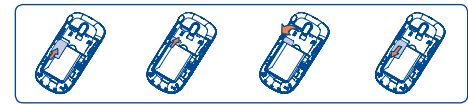
2.1 Set-up

Removing or installing the back cover



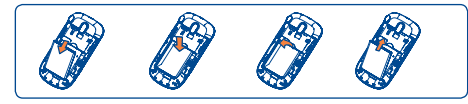
Inserting or removing the SIM card

You must insert your SIM card to make phone calls. Please power off your cellphone and remove battery before inserting or removing the SIM card.



Place the SIM card with the chip facing downwards and slide it into its housing. Make sure that it is correctly inserted. To remove the card, press and slide it out.

Installing or removing the battery



- Insert and click the battery into place, then close the cellphone cover.
- Unclip the cover, then remove the battery.

2.2 Power on your cellphone

Hold down the key until the cellphone powers on.

2.3 Power off your cellphone

Hold down the key from the main screen.

2.4 Using the touchscreen

Tap

To access an application, tap it with your finger.

Drag

Place your finger on the screen to drag the object to the destination.

Scroll

Slide the screen to scroll up and down the applications, images, web pages... at your convenience.

3 Making a call.....

Enter the desired number on the on-screen keypad directly or select a contact from Call log or Directory by tapping or respectively, then tap or press key to place the call. The number you entered can be saved to Directory by selecting. If you make a mistake, you can delete the incorrect digits by tapping.

To hang up the call, press the key.

4 Menu arrange.....

The main menu is designed to vary according to your preference. To access this function, select to enter the main menu, then tap.

Change the order

Access "Menu arrange", focus on the main menu item you want to move, and then tap "Options" | Move, it will go to the main menu screen and tick "v" will be shown on the main menu you selected, then release it to your favourite destination.

Show/Hide

Access "Menu arrange", tap the left check box of the selected menu once to show/hide, then tap "Options" | Save to save the operation.

Restore default

From main menu, select "Menu arrange", then tap "Options" | Restore default settings to return to the default menu display.

8

9

10

11

12

13

14

