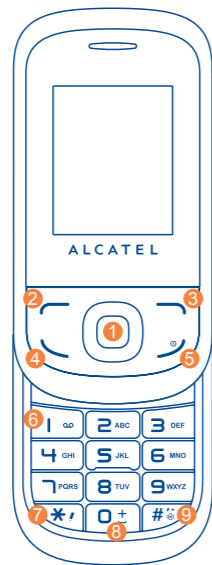


Quick Start Guide

For more information about how to use the cellphone, please go to www.alcatelonetouch.com to download complete user manual (English version only). Moreover, from the website you can also consult FAQ (English version only).

Prolonged exposure to music at full volume on the music player may damage the listener's hearing. Set your cellphone volume safely. Use only headphones recommended by TCT Mobile Limited and its affiliates.



1.1 Keys

- 1 Navigation key
 - Central :
 - Confirm an option (press)
 - Access main menu (press in idle screen)
 - Left ⁽¹⁾:
 - Messages (press in idle screen)
 - Right ⁽¹⁾:
 - Voice calendar (press in idle screen)
 - Up ⁽¹⁾:
 - Profiles (press in idle screen)
 - Down ⁽¹⁾:
 - Camera (press in idle screen)
- 2 Left softkey ⁽¹⁾: Menu (press in idle screen)
- 3 Right softkey ⁽¹⁾: Contacts (press in idle screen)
- 4 Send a call
Answer a call
Access call log
Access fake call settings (press and hold in idle screen)
- 5 Power on/off the handset (press and hold)
End call
Return to idle screen
- 6 In idle screen:
 - Press: input "1"
 - Press and hold: access your voicemail
 In edit mode:
 - Press: insert a smart punctuation
 - Press and hold: input "1"

- 7 In idle screen:
 - Press: input "*"
 In edit mode:
 - Press: switch input method
 - Press and hold: switch languages
- 8 In idle screen:
 - Press: input "0"
 - Press and hold: switch among "+" "P" "W"
 In edit mode:
 - Press: input a space
 - Press and hold: input "0"
- 9 In idle screen:
 - Press: input "#"
 - Press and hold: activate/deactivate the meeting mode
 In edit mode:
 - Press: access symbols table

1.2 Main screen icons ⁽¹⁾

- Battery charge level**
- Vibrate alert:** your cellphone vibrates, but does not ring or beep.
- Headset connected.**
- Keypad locked.**
- Alarm or appointments programmed.**

- Missed calls.**
- Radio is on.**
- WAP alerts ⁽¹⁾.**
- MicroSD Card available.**
- Roaming.**
- SIM card missing.**
- Sending a MMS.**
- MMS receiving.**
- Silence mode:** your cellphone does not ring, beep or vibrate.
- SMS unread.**
- MMS unread.**
- Email unread.**
- Flight mode.**
- Call forwarding activated:** your calls are forwarded.
- Level of network reception.**
- Voicemail message arrived.**
- GPRS connection status (Activated).**
- GPRS connecting.**

2 Getting started

2.1 Set-up

Removing and installing the back cover



Removing and installing the battery

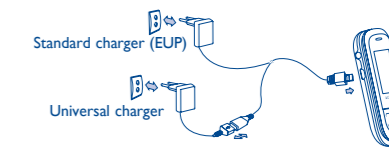


Inserting and removing the SIM card



Place the SIM card with the chip facing downwards and slide it into its housing. Make sure that it is correctly inserted. To remove the card, press it and slide it out.

Charging the battery ⁽¹⁾



Connect the battery charger to your cellphone and outlet respectively.

- The charging may take about 20 minutes to start if the battery is flat.
- Be careful not to force the plug into the socket.
- Make sure the battery is correctly inserted before connecting the charger.
- The outlet must be near to the cellphone and easily accessible (avoid electric extension cables).
- When using your cellphone for the first time, charge the battery fully (approximately 3 hours). You are advised to fully charge the battery .
- To reduce power consumption and energy waste, when battery is fully charged, disconnect your charger from the plug; reduce the backlight time, etc.

The charge is complete when the animation stops.

2.2 Power on your cellphone

Hold down the key until the cellphone powers on.

2.3 Power off your cellphone

Hold down the key from the main screen.

ALCATEL onetouch.

2.4 Idle Screen



Status Bar
Status/Notification indicators

Wallpaper
New Events Icon Line
New events are displayed with its quantity. You could press to view the new events.

3 Calls

3.1 Making a call

Dial the desired number then press the key to place the call. If you make a mistake, you can delete the incorrect digits by pressing the right softkey.

To hang up the call, press the key.

Making an emergency call

If your cellphone is covered by the network, dial emergency number and press the key to make an emergency call. This works even without a SIM card and without typing the PIN code or unlocking the keypad.

3.2 Calling your voicemail ⁽¹⁾

To access your voicemail, hold down the key.

3.3 Receiving a call

When you receive an incoming call, press the key to talk and then hang up using the key.

3.4 Available functions during the call

During a call, you can use your directory, your calendar, short messages, etc. without losing your correspondent.

⁽¹⁾ Could be personalized.

4 Contacts

4.1 Consulting your contacts

To access the **contacts** from the main screen, press the key and select the icon from the menu.

4.2 Adding a contact

Select the directory in which you wish to add contact, press the **"Options"** softkey, select **"Add contact"**.

5 Messaging

5.1 Create message

From the main menu select **"Messaging"** to create text/multimedia message. You can type a message and you can also modify a predefined message in **Templates** or customize your message by adding pictures, photos, sounds, titles, etc (only available while editing a MMS). While writing a message, select **"Options"** to access all the messaging options. You can save your messages that you send often to **Draft** or **Templates** (MMS only).

Specific letters (accent) will increase the size of the SMS, this may cause multiple SMS to be sent to your recipient.

⁽¹⁾ The icons and illustrations in this guide are provided for information purposes only.

6 Call log

You can access your call memory by pressing from the idle screen, and you will see **Outgoing call(s)**, **Missed call(s)** and **Answered call(s)**.

7 Voice calendar

Voice calendar is a calendar with voice reminder. After accessing **Voice calendar** from the main menu, you may select **Create voice calendar** to record a sound file. Then you may set the date, time, mode, etc. If you select **Directly playing** mode, the recorded sound file will play automatically as the voice reminder at the very time and date you have set.

8 Profiles

With this menu, you may personalize ringtones for different events and environments.

9 Media

9.1 Music player

Access this feature from the main menu by selecting **"Media Music player"**. You will have full flexibility of managing music both on your cellphone and memory card.

⁽¹⁾ Depending on your network operator.

9.2 Radio

Your cellphone is equipped with a radio ⁽¹⁾ with RDS functionality. You can use the application as a traditional radio with saved channels or with parallel visual information related to the radio program on the display if you tune to stations that offer Visual Radio service. You can listen to it while running other applications.

9.3 Local games

Your cellphone includes some games. Select **"Game settings"**, it allows you to manage settings, in which you may set background audio and vibrate alert.

10 Camera

Your cellphone is fitted with a camera for taking photos that you can use in different ways:

- store them in your **"File manager/My creations"**.
- send them in a multimedia message (MMS) to a cellphone.
- customize your main screen.
- select them as incoming call image to a contact in your directory.

11 Tools

11.1 Alarm

Your cellphone has a built-in alarm clock with a snooze feature.

⁽¹⁾ The quality of the radio depends on the coverage of the radio station in that particular area.

⁽¹⁾ Depending on your country.

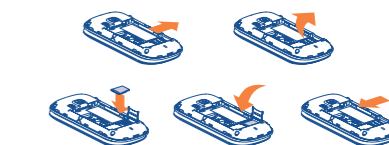
12 Settings

From the main menu, select the menu icon and select the function of your choice in order to customize your cellphone: **Slider settings**, **Phone settings**, **Call settings**, **Security**, **Network**, **Connectivity**.

13 File manager

You will have access to all audio and visual files stored in cellphone or memory card in **File manager**. You can access a number of items with this option: **My audios**, **My images**, **My creations**, **Other files**, **Memory card** and **Memory status**.

Inserting the memory card:



To release the microSD card holder, slide it in the direction of the arrow and lift it. Then insert the microSD card with the golden contact downward. Finally, turn down the microSD holder and slide it in the opposite direction to lock it.

Do not support hot plugging for microSD card.

11.2 Fake call

Protect yourself from annoying situations with the **"Fake Call"**. In this menu, you can set **"Caller name"**, **"Call time"** and **"Ringtone"**. When the timer reaches, the cellphone will ring and display like receiving a real phone call. Press key, pretend answering a call, the screen will display just like have an ongoing call. Press key, pretend to reject the call, the call will terminate automatically.

11.3 Weather

Your cellphone is equipped with a weather function for consulting up to 3-day forecasts of favorite cities.

11.4 Notes

You can create a note in text or voice format by accessing **"Tools/Notes"** from the main menu.

11.5 Calculator

Enter a number, select the type of operation to be performed, and enter the second number, then press **"="** to display the result.

11.6 World clock

The World clock shows current local time and the time zone in different cities.

11.7 Converter

Unit convertor and **Currency convertor**.

11.8 Stopwatch

The stopwatch is a simple application for measuring time with the possibility to register several results and suspend/resume measurement.

⁽¹⁾ Contact your network operator to check service availability.

14 WAP

Access **Wap** options: **Homepage, Bookmarks, Recent pages, Offline pages, Go to URL, Service inbox, Settings.**

15 Services.....

Contact your network operator to check service availability.

16 Latin input mode..

To write messages, there are two writing methods:

- Normal: this mode allows you to type a text by choosing a letter or a sequence of characters associated with a key.
- Predictive with the eZi mode: this mode speeds up the writing of your text.

Safety and use.....

We recommend that you read this chapter carefully before using your cellphone. The manufacturer disclaims any liability for damage, which may result as a consequence of improper use or use contrary to the instructions contained herein.

•TRAFFIC SAFETY:
Given that studies show that using a cellphone while driving a vehicle constitutes a real risk, even when the hands-free kit is used (car kit, headset...), drivers are requested to refrain from using their cellphone when the vehicle is not parked. Check the laws and regulations on the use of wireless cellphones and their accessories in the areas where you drive. Always obey them. The use of these devices may be prohibited or restricted in certain areas.

When driving, do not use your cellphone and headphone to listen to music or to the radio. Using a headphone can be dangerous and forbidden in some areas.

When switched on, your cellphone emits electromagnetic waves that can interfere with the vehicle's electronic systems such as ABS anti-lock brakes or airbags. To ensure that there is no problem:

- do not place your cellphone on top of the dashboard or within an airbag deployment area,
- check with your car dealer or the car manufacturer to make sure that the car's electronic devices are shielded from cellphone RF energy.

• CONDITIONS OF USE:
You are advised to switch off the cellphone from time to time to optimize its performance.

Remember to abide by local authority rules of cellphone use on aircrafts. Operational Warnings: Obey all posted signs when using mobile devices in public areas.

Follow Instructions to Avoid Interference Problems: Turn off your mobile device in any location where posted notices instruct you to do so. In an aircraft, turn off your mobile device whenever instructed to do so by airline staff. If your mobile device offers an airplane mode or similar feature, consult airline staff about using it in flight.

Switch the cellphone off when you are in health care facilities, except in designated areas. As with many other types of equipment now in regular use, cellphones can interfere with other electrical or electronic devices, or equipment using radio frequency.

Switch the cellphone off when you are near gas or flammable liquids. Strictly obey all signs and instructions posted in a fuel depot, gas station, or chemical plant, or in any potentially explosive atmosphere.

When the cellphone is switched on, it should be kept at least 15 cm from any medical device such as a pacemaker, a hearing aid or insulin pump. In particular when using the cellphone you should hold it against the ear on the opposite side to the device, if any.

Read and follow the directions from the manufacturer of your implantable medical device. If you have any questions about using your mobile device with your implantable medical device, consult your healthcare provider.

To avoid hearing impairment, answer the call before holding your cellphone to your ear. Also move the handset away from your ear while using the "hands-

free" option because the amplified volume might cause hearing damage. It is recommended to have proper supervision while small children use your cellphone.

When replacing the cover please note that your cellphone may contain substances that could create an allergic reaction. Always handle your cellphone with care and keep it in a clean and dust-free place.

Do not allow your cellphone to be exposed to adverse weather or environmental conditions (moisture, humidity, rain, infiltration of liquids, dust, sea air, etc.). The manufacturer's recommended operating temperature range is -10°C (14°F) to +55°C (131°F) (the max. value depends on device, materials and housing paint/texture).

Over 55°C (131°F) the legibility of the cellphone's display may be impaired, though this is temporary and not serious.

Do not open or attempt to repair your cellphone yourself.

Do not drop, throw or try to bend your cellphone.

Do not paint it.

Use only batteries, battery chargers, and accessories which are recommended by TCT Mobile Limited and its affiliates and are compatible with your cellphone model. TCT Mobile Limited and its affiliates disclaim any liability for damage caused by the use of other chargers or batteries.

Your cellphone should not be disposed of in a municipal waste. Please check local regulations for disposal of electronic products. Remember to make back-up copies or keep a written record of all important information stored in your cellphone.

Some people may suffer epileptic seizures or blackouts when exposed to flashing lights, or when playing video games. These seizures or blackouts may occur even if a person never had a previous seizure or blackout. If you have experienced seizures or blackouts, or if you have a family history of such occurrences, please consult your doctor before playing video games on your cellphone or enabling a flashing-lights feature on your cellphone. Parents should monitor their children's use of video games or other features that incorporate flashing lights on the cellphones. All persons should discontinue use and consult a doctor if any of the following symptoms occur: convulsion, eye or muscle twitching, loss of awareness, involuntary movements, or disorientation. To limit the likelihood of such symptoms, please take the following safety precautions:

- Play at the farthest distance possible from the screen.
- When you play games on your cellphone, you may experience occasional discomfort in your hands, arms, shoulders, neck, or other parts of your body. Follow these instructions to avoid problems such as tendonitis, carpal tunnel syndrome, or other musculoskeletal disorders:
 - Take a minimum of a 15-minute break every hour of game playing.
 - If your hands, wrists, or arms become tired or sore while playing, stop and rest for several hours before playing again.
 - If you continue to have sore hands, wrists, or arms during or after playing, stop the game and see a doctor.

⚠ Prolonged exposure to music at full volume using the music player may damage your hearing. Set your cellphone's volume to it's lowest setting prior to inserting headphones in your ears and adjust the volume to your preference. Only use headphones that are recommended by TCT Mobile Limited and it's affiliates.

• PRIVACY:
Please note that you must respect the laws and regulations in force in your jurisdiction or other jurisdiction(s) where you will use your cellphone regarding taking photographs and recording sounds with your cellphone. Pursuant to such laws and regulations, it may be strictly forbidden to take photographs and/or to record the voices of other people or any of their personal attributes, and reproduce or distribute them, as this may be considered to be an invasion of privacy.

It is the user's sole responsibility to ensure that prior authorization be obtained, if necessary, in order to record private or confidential conversations or take a photograph of another person; the manufacturer, the seller or vendor of your cellphone (including the operator) disclaim any liability which may result from the improper use of the cellphone.

• BATTERY AND ACCESSORIES:
Before removing the battery from your cellphone, please make sure that the cellphone is switched off.

Observe the following precautions for battery use:

- Do not attempt to open the battery (due to the risk of toxic fumes and burns).
- Do not puncture, disassemble or cause a short-circuit in a battery.
- Do not burn or dispose of a used battery in the garbage or store it at temperatures above 60°C (140°F).

Batteries must be disposed of in accordance with locally applicable environmental regulations. Only use the battery for the purpose for which it was designed. Never use damaged batteries or those not recommended by TCT Mobile Limited and/or its affiliates.

♻ This symbol on your cellphone, the battery and the accessories means that these products must be taken to collection points at the end of their life:

- Municipal waste disposal centers with specific bins for these items of equipment
- Collection bins at points of sale.

They will then be recycled, preventing substances being disposed of in the environment, so that their components can be reused.

In European Union countries:
These collection points are accessible free of charge. All products with this sign must be brought to these collection points.

In non European Union jurisdictions:
Items of equipment with this symbol are not be thrown into ordinary bins if your jurisdiction or your region has suitable recycling and collection facilities; instead they are to be taken to collection points for them to be recycled.

In the United States you may learn more about CTIA's Recycling Program at www.recyclewirelessphones.com

CAUTION: RISK OF EXPLOSION IF BATTERY IS REPLACED BY AN INCORRECT TYPE. DISPOSE OF USED BATTERIES ACCORDING TO THE INSTRUCTIONS

• CHARGERS
Home A.C./Travel chargers will operate within the temperature range of: 0°C (32°F) to 40°C (104°F).

The chargers designed for your cellphone meet with the standard for safety

of information technology equipment and office equipment use. Due to different applicable electrical specifications, a charger you purchased in one jurisdiction may not work in another jurisdiction. They should be used for this purpose only.

Characteristics of power supply (depending on the country):
Travel charger: 100-240 V, 50/60 Hz, 150 mA
Output: 5 V, 400/550 mA
Battery: Lithium 650 mAh

• RADIO WAVES:
THIS CELLPHONE MEETS THE GOVERNMENT'S REQUIREMENTS FOR EXPOSURE TO RADIO WAVES.

Your cellphone is a radio transmitter and receiver. It is designed and manufactured not to exceed the emission limits for exposure to radio-frequency (RF) energy. These limits are part of comprehensive guidelines and establish permitted levels of RF energy for the general population. The guidelines are based on standards that were developed by independent scientific organizations through periodic and thorough evaluation of scientific studies. These guidelines include a substantial safety margin designed to ensure the safety of all persons, regardless of age and health.

The exposure standard for cellphones employs a unit of measurement known as the Specific Absorption Rate, or SAR. The SAR limit set by public authorities such as the Federal Communications Commission of the US Government (FCC), or by Industry Canada, is 1.6 W/kg averaged over 1 gram of body tissue. Tests for SAR are conducted using standard operating positions with the cellphone transmitting at its highest certified power level in all tested frequency bands.

Although the SAR is determined at the highest certified power level, the actual SAR level of the cellphone while operating can be well below the maximum value. This is because the cellphone is designed to operate at multiple power levels so as to use only the power required to reach the network. In general, the closer you are to a wireless base station antenna, the lower the power output of the cellphone. Before a cellphone model is available for sale to the public, compliance with national regulations and standards must be shown. The highest SAR value for this model cellphone when tested is 0.892 W/Kg for use at the ear and 1.11 W/Kg for use close to the body.

While there may be differences between the SAR levels of various cellphones and at various positions, they all meet the government requirement for RF exposure. For body-worn operation, the cellphone meets FCC RF exposure guidelines provided that it is used with a non-metallic accessory with the handset at least 1.5 cm from the body. Use of other accessories may not ensure compliance with FCC RF exposure guidelines.

Additional information on SAR can be found on the Cellular Telecommunications & Internet Association (CTIA) Web site: <http://www.phonefacts.net>

The World Health Organization (WHO) considers that present scientific information does not indicate the need for any special precautions for use of cellphones. If individuals are concerned they might choose to limit their own or their children's RF exposure by limiting the length of calls, or using "hands-free" devices to keep cellphones away from the head and body. (fact sheet n°193).

Additional WHO information about electromagnetic fields and public health are available on the following website: <http://www.who.int/peh-emf>.

Note: This equipment has been tested and found to comply with the limits for a Class B digital device pursuant to part 15 of the FCC Rules. These limits are designed to provide reasonable protection against harmful interference in a residential installation. This equipment generates, uses and can radiate radio frequency energy and, if not installed and used in accordance with the instructions, may cause harmful interference to radio communications. However, there is no guarantee that interference to radio or television reception, which can be determined by turning the equipment off and on, the user is encouraged to try to correct the interference by one or more of the following measures:

- Reorient or relocate the receiving antenna.
 - Increase the separation between the equipment and receiver.
 - Connect the equipment into an outlet on a circuit different from that to which the receiver is connected.
 - Consult the dealer or an experienced radio/TV technician for help.
- Changes or modifications not expressly approved by the party responsible for compliance could void the user's authority to operate the equipment. For the receiver devices associated with the operation of a licensed radio service (e.g. FM broadcast), they bear the following statement: This device complies with Part 15 of the FCC Rules. Operation is subject to the condition that this device does not cause harmful interference. For other devices, they bear the following statement: This device complies with Part 15 of the FCC Rules. Operation is subject to the following two conditions:

- (1) this device may not cause harmful interference
- (2) this device must accept any interference received, including interference that may cause undesired operation.

Your cellphone is equipped with a built-in antenna. For optimal operation, you should avoid touching it or degrading it. As mobile devices offer a range of functions, they can be used in positions other than against your ear. In such circumstances the device will be compliant with the guidelines when used with headset or usb data cable. If you are using another accessory ensure that whatever product is used is free of any metal and that it positions the cellphone at least 1.5 cm away from the body.

• LICENCES

Obigo® is a registered trademark of Obigo AB.

microSD Logo is a trademark.

eZiText™ and Zi™ are trademarks of Zi Corporation and/or its Affiliates.

eZiText™ and Zi™ are trademarks of Zi Corporation and/or its Affiliates.

eZiText™ and Zi™ are trademarks of Zi Corporation and/or its Affiliates.

eZiText™ and Zi™ are trademarks of Zi Corporation and/or its Affiliates.

eZiText™ and Zi™ are trademarks of Zi Corporation and/or its Affiliates.

eZiText™ and Zi™ are trademarks of Zi Corporation and/or its Affiliates.

eZiText™ and Zi™ are trademarks of Zi Corporation and/or its Affiliates.

eZiText™ and Zi™ are trademarks of Zi Corporation and/or its Affiliates.

eZiText™ and Zi™ are trademarks of Zi Corporation and/or its Affiliates.

eZiText™ and Zi™ are trademarks of Zi Corporation and/or its Affiliates.

eZiText™ and Zi™ are trademarks of Zi Corporation and/or its Affiliates.

eZiText™ and Zi™ are trademarks of Zi Corporation and/or its Affiliates.

eZiText™ and Zi™ are trademarks of Zi Corporation and/or its Affiliates.

eZiText™ and Zi™ are trademarks of Zi Corporation and/or its Affiliates.

eZiText™ and Zi™ are trademarks of Zi Corporation and/or its Affiliates.

eZiText™ and Zi™ are trademarks of Zi Corporation and/or its Affiliates.

eZiText™ and Zi™ are trademarks of Zi Corporation and/or its Affiliates.

eZiText™ and Zi™ are trademarks of Zi Corporation and/or its Affiliates.

eZiText™ and Zi™ are trademarks of Zi Corporation and/or its Affiliates.

eZiText™ and Zi™ are trademarks of Zi Corporation and/or its Affiliates.

eZiText™ and Zi™ are trademarks of Zi Corporation and/or its Affiliates.

eZiText™ and Zi™ are trademarks of Zi Corporation and/or its Affiliates.

eZiText™ and Zi™ are trademarks of Zi Corporation and/or its Affiliates.

eZiText™ and Zi™ are trademarks of Zi Corporation and/or its Affiliates.

eZiText™ and Zi™ are trademarks of Zi Corporation and/or its Affiliates.

eZiText™ and Zi™ are trademarks of Zi Corporation and/or its Affiliates.

eZiText™ and Zi™ are trademarks of Zi Corporation and/or its Affiliates.

eZiText™ and Zi™ are trademarks of Zi Corporation and/or its Affiliates.

eZiText™ and Zi™ are trademarks of Zi Corporation and/or its Affiliates.

eZiText™ and Zi™ are trademarks of Zi Corporation and/or its Affiliates.

eZiText™ and Zi™ are trademarks of Zi Corporation and/or its Affiliates.

eZiText™ and Zi™ are trademarks of Zi Corporation and/or its Affiliates.

eZiText™ and Zi™ are trademarks of Zi Corporation and/or its Affiliates.

eZiText™ and Zi™ are trademarks of Zi Corporation and/or its Affiliates.

eZiText™ and Zi™ are trademarks of Zi Corporation and/or its Affiliates.

eZiText™ and Zi™ are trademarks of Zi Corporation and/or its Affiliates.

eZiText™ and Zi™ are trademarks of Zi Corporation and/or its Affiliates.

eZiText™ and Zi™ are trademarks of Zi Corporation and/or its Affiliates.

Alcatel Mobile Phones Limited Warranty.....

TCT Mobile North America LTD warrants to the original retail purchaser of this wireless device, that should this product or part thereof during normal consumer usage and condition, be proven to be defective in material or workmanship that results in product failure within the first twelve (12) months from the date of purchase as shown on your original sales receipt. Such defect(s) will be repaired or replaced (with new or rebuilt parts) at the company's option without charge for parts or labor directly related to the defect(s).


Batteries, power adapters, and other accessories sold as in box items are also warranted against defects and workmanship that results in product failure within the first six (6) months period from the date of purchase as shown on your original sales receipt. Such defect(s) will be repaired or replaced (with new or rebuilt parts) and the company's option without charge for parts or labor directly related to the defect(s).

The limited warranty for your wireless device will be voided if any of the following conditions occur:

- Non-compliance with the instructions for use or installation, or with technical and safety standards applicable in the geographical area where your cellphone is used;
- Connection to any equipment not supplied or not recommended by TCT Mobile;
- Modification or repair performed by individuals not authorized by TCT Mobile or its affiliates;
- Acts of god such as Inclement weather, lightning, power surges, fire, humidity, infiltration of liquids or foods, chemical products, download of files, crash, high voltage, corrosion, oxidation;
- Removal or altering of the wireless devices event labels or serial numbers (IMEI);
- Damage from exposure to water or other liquids, moisture, humidity, excessive temperatures or extreme environmental conditions, sand, excess dust and any condition outside the operating guidelines;
- Defects in appearance, cosmetic, decorative or structural items such as framing and non-operative parts.

Troubleshooting.....

Before contacting the service center, you are advised to follow the instructions below:


- You are advised to fully charge () the battery for optimal operation.
- Avoid storing large amounts of data in your cellphone as this may affect its performance.
- Use User Data Format to perform cellphone formatting (to perform User Data format, hold down # while simultaneously pressing the power on/off key under the power off mode). ALL User cellphone data: contacts, photos, messages and files, downloaded applications will be lost permanently. It is strongly advised to fully backup the cellphone data and profile before doing formatting.

and carry out the following checks:

My cellphone cannot switch on

- Check the battery contacts, remove and reinstall your battery, then turn your cellphone on
- Check the battery power level, charge for at least 20 minutes
- If it still does not work, please use User Data Format to reset the cellphone

My cellphone is frozen or has not responded for several minutes

- Restart your cellphone by pressing and holding the  key
- Remove the battery and re-insert it, then restart the cellphone
- If it still does not work, please use User Data Format to reset the cellphone

My cellphone turns off by itself

- Check that your keypad is locked when you are not using your cellphone, and make sure power off key is not mis-contacted due to unlocking keypad.
- Check the battery charge level
- If it still does not work, please use User Data Format to reset the cellphone

My cellphone cannot charge properly

- Make sure you are using an Alcatel battery and the charger from the box
- Make sure your battery is inserted properly and clean the battery contact if it's dirty. It must be inserted before plugging in the charger
- Make sure that your battery is not completely discharged; if the battery power is empty for a long time, it may take around 20 minutes to display the battery charger indicator on the screen
- Make sure charging is carried out under normal conditions (0°C to +40°C)
- When abroad, check that the voltage input is compatible

My cellphone cannot connect to a network or "No service" is displayed

- Try connecting in another location
- Verify the network coverage with your operator
- Check with your operator that your SIM card is valid
- Try selecting the available network(s) manually
- Try connecting at a later time if the network is overloaded

My cellphone cannot connect to the Internet

- Check that the IMEI number (press *#06#) is the same as the one printed on your warranty card or box
- Make sure that the internet access service of your SIM card is available
- Check your cellphone's Internet connecting settings
- Make sure you are in a place with network coverage
- Try connecting at a later time or another location


Invalid SIM card

- Make sure the SIM card has been correctly inserted
- Make sure the chip on your SIM card is not damaged or scratched
- Make sure the service of your SIM card is available

My cellphone cannot connect to a network or "No service" is displayed

- Try connecting in another location
- Verify the network coverage with your operator
- Check with your operator that your SIM card is valid
- Try selecting the available network(s) manually
- Try connecting at a later time if the network is overloaded

Unable to make outgoing calls

- Make sure you have dialed a valid number and press the  key
- For international calls, check the country and area codes
- Make sure your cellphone is connected to a network, and the network is not overloaded or unavailable
- Check your subscription status with your operator (credit, SIM card valid, etc.)
- Make sure you have not barred outgoing calls
- Make sure that your cellphone is not in flight mode

Unable to receive incoming calls

- Make sure your cellphone is switched on and connected to a network (check for overloaded or unavailable network)
- Check your subscription status with your operator (credit, SIM card valid, etc.)
- Make sure you have not forwarded incoming calls
- Make sure that you have not barred certain calls
- Make sure that your cellphone is not in flight mode



The caller's name/number does not appear when a call is received

- Check that you have subscribed to this service with your operator
- Your caller has concealed his/her name or number

I cannot find my contacts

- Make sure your SIM card is not broken
- Make sure your SIM card is inserted properly
- Import all contacts stored in SIM card to cellphone

The sound quality of the calls is poor

- You can adjust the volume during a call by pressing the  key
- Check the network strength 
- Make sure that the receiver, connector or speaker on your cellphone is clean

I am unable to use the features described in the manual

- Check with your operator to make sure that your subscription includes this service
- Make sure this feature does not require an Alcatel accessory

When I select a number from my contacts, the number cannot be dialed

- Make sure that you have correctly recorded the number in your file
- Make sure that you have inputted the country prefix when calling a foreign country

I am unable to add a contact in my contacts

- Make sure that your SIM card contacts are not full: delete some files or save the files in the phone contacts (i.e. your professional or personal directories)

My callers are unable to leave messages on my voicemail


- Contact your network operator to check service availability

I cannot access my voicemail

- Make sure your operator's voicemail number is correctly entered in "Messaging/Voicemail"
- Try later if the network is busy

I am unable to send and receive MMS

- Check your phone memory availability as it might be full
- Contact your network operator to check service availability and check MMS parameters
- Verify the server center number or your MMS profile with your operator
- The server center may be swamped, try again later

The flickering  icon is displayed on my standby screen

- You have saved too many short messages on your SIM card; delete some of them or archive them in the phone memory

SIM card PIN locked

- Contact your network operator to obtain the PUK code (Personal Unblocking Key)

I am unable to download new files

- Make sure there is sufficient phone memory for your download
- Select the Micro-SD card as the location to store downloaded files
- Check your subscription status with your operator

Hearing Aid Compatibility

Your cellphone is rated: "For Hearing Aid", to assist hearing device users in finding cellphones that may be compatible with their hearing devices.

This device is HAC M3 compatible.

For more information please refer to "Hearing Aid Compatibility with Mobile Phones" leaflet or visit our website <http://www.alcatelone-touch.com>

General information

- **Website:** www.alcatelone-touch.com
- **Facebook:** <http://www.facebook.com/alcatelone-touchtribe>
- **Twitter:** <http://www.twitter.com/Alcateltribes>
- **Hot Line Number:** In the United States, call 877-702-3444 for technical support.

On our Internet site, you will find our FAQ (Frequently Asked Questions) section. You can also contact us by e-mail to ask any questions you may have.

An electronic version of this user guide is available in English and other languages according to availability on our server: www.alcatelone-touch.com

Your cellphone is a transceiver that operates on GSM networks with 850 and 1900 MHz bands.