

## Quick Start Guide

For more information about how to use the phone, please go to [www.alcatelonetouch.com](http://www.alcatelonetouch.com) to download complete user manual. Also on our website you can find helpful FAQs, realize software upgrade, etc.

ALCATELone touch.

English - CJB3251ALAAA

### Muting the ringtone

To mute ringtone of current incoming call, press Right softkey once.

### Rejecting a call

Press the **1** key once, or reject it by SMS (Options/Reject call with SMS).

## 4 Menu arrange .....

It is designed to vary according to your preference.

### Change the order

Access the main menu, focus on the main menu item you want to move, select **Options/Move**, and tick "Y" will be shown on the item you selected, then release it to your favorite destination.

### Show/Hide

Access the main menu, select **Options/Add and remove menu**, and select the left check box of the selected menu once to show/hide, and then select **Done** to save the operation.

## 5 Messaging .....

### 5.1 Access

You may access this menu using the following options:

- Access from the main menu by selecting **"Messaging"**.
- Select **☰** from widget bar, and then enter the sub-menu you require.

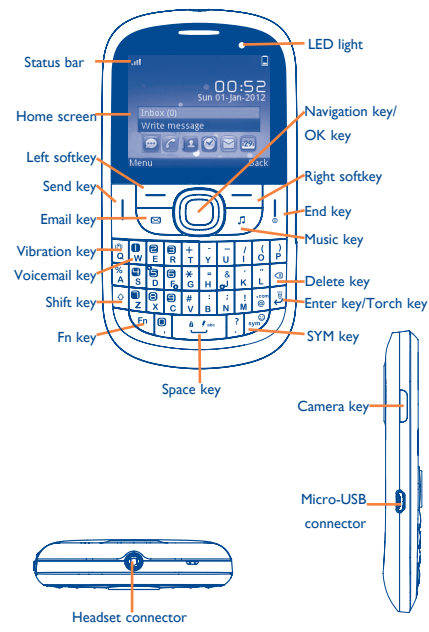
### Table of contents

1	Your mobile.....	3
2	Getting started.....	8
3	Making a call.....	9
4	Menu arrange.....	10
5	Messages.....	10
6	E-mail.....	11
7	Pairing.....	12
8	Contacts.....	12
9	Call log.....	13
10	Media applications.....	13
11	Internet.....	14
12	Entertainment.....	16
13	Camera.....	16
14	Profiles.....	17
15	File manager.....	17
16	Bluetooth™.....	18
17	Others.....	18
18	Settings.....	20
19	Making the most of your mobile.....	20
20	Latin input mode.....	22

**⚠** Prolonged exposure to music at full volume on the music player may damage the listener's hearing. Set your phone volume safely. Use only headphones recommended by TCT Mobile Limited and its affiliates.

## Your mobile .....

### 1.1 Keys and connectors



## 7 Pairing (1) .....

Pairing Instant messaging (IM) allows you to chat with other people using Pairing account. You can also connect to other popular IM services through Pairing, like Yahoo, AIM, GG, ICQ, GTalk, iChat etc.

Please note that the services accessible to you will depend on your client version and dynamic Pairing server options.

## 8 Contacts .....

### 8.1 Consulting your contacts

You can access to this function by selecting **"Contacts"** from the main menu or widget bar.

### 8.2 Adding a contact

You can add a new contact to phone or SIM card by selecting **"Create new"**.

### Birthday reminder

You can set a birthday reminder when editing contact information. This will remind you at regular intervals during the day prior to the set date.

## 6 Email.....

Your phone has an email client with the settings pre-defined for a few popular email services like – GoogleMail, Yahoo, AOL, etc. Besides this, you can set up other POP3 or IMAP4 email accounts that you may be using.

- Press to go left/right/up/down or adjust the volume
- Press to confirm an option

- Answer/Send a call
- Enter Call log

- Press: End a call  
Return to the Home screen
- Press and hold: Power on/off

- Press to enter **Music**

- Press to enter **Email**

- Vibrate alert

- Press and hold: Access your voicemail

- Switch between ABC/abc/Abc

- Press once: Input a top-half character
- Press twice: Lock the keyboard in top-half key input mode
- Press and hold: Input top-half characters only until key is released
- Fn + B: Access Bluetooth
- Fn + M: Access Music
- Fn + P: Access Profiles
- Fn + J: Access Java applications

- Press: Enter a space (on edit mode)  
Confirm an option (on edit mode)  
Unlock the keypad (on Home screen)

- Press and hold: Access language list (on edit mode)  
Lock the keypad (on Home screen)

- Hold down Fn key, then press Space key to select input method

- Enter symbol table
- Hold down Fn key, then press SYM key to enter emotion table

- Press: Confirm an option  
Enter the next line (on edit mode)
- Press and hold: Turn on/off torch (on Home screen)

- Press to enter **Camera** (1)

### 1.2 Status bar icons (2)

#### Battery charge level

**Vibrate alert:** your phone vibrates, but does not ring or beep with the exception of the alarm.

**Bluetooth status (Activated).**

**Java status (Activated).**

**Headset connected.**

**Call forwarding activated:** your calls are forwarded.

**Alarm or appointments programmed.**

(1) Depending on your network operator.

(2) The icons and illustrations in this guide are provided for informational purposes only.

## 10.2 Image.....

A library links to the images both in phone and SD card to be shown in list, slide, set as wallpaper, power on/off display and incoming call image or sent by MMS, Email, Bluetooth.

## 10.3 Video .....

Contains all video clips both in phone and SD card and enables you to play, send, set as power on/off display, delete, rename, sort, etc.

## 10.4 Radio.....

Your phone is equipped with a radio (1) with RDS (2) functionality. You can use the application as a traditional radio with saved channels or with parallel visual information related to the radio program on the display, if you tune to stations that offer Visual Radio service. You can listen to it while running other applications.

## 11 Internet (3) .....

### 11.1 Apps.....

**Apps** is an online software store, where you can download and install applications and games to your phone.

You can access to this function by selecting **"Apps"** from the main menu.

### 11.2 Web.....

**Web** not only gives you the full Web experience where you stay in touch with your friends, obtain information, do your online banking etc., but also saves time by using compressed web pages.

(1) The quality of the radio depends on the coverage of the radio station in that particular area.

(2) Depending on your network operator and market.

(3) Depending on your network operator. May cause additional network charges for data flow to provide this service. Extra fees might also be charged in roaming states.

### Level of network reception.

### Missed calls.

### Call in progress.

### Stopwatch is active.

### Radio is on.

### Email unread.

### WAP messages (1).

### Roaming.

### SD card scanning completed.

### SIM card unavailable.

### Line switching (1): indicates the selected line.

### 2G/3G connected.

### GPRS connection status (Activated).

### GPRS connecting.

### EDGE connecting.

### EDGE attached.

(1) Depending on your network operator.

## 11.3 WAP.....

Access WAP options: **Homepage, Bookmarks, Go to URL, Open file, Last web address, Recent pages, Offline pages, Service inbox, Settings.**

## 11.4 News.....

It is a huge time saver providing news updates from a website in a simple form.

Once subscribed to a channel, it gives you the ability to track and manage all your favorite RSS content on your mobile phone at anytime, anywhere!

## 11.5 Weather.....

Your phone is equipped with a weather function for consulting up to 3-day forecast of favorite cities.

## 11.6 Facebook.....

Facebook is a social utility that connects people with friends and others who work, study and live around them. It provides a number of features with which users may interact: Wall, a space on every user's profile page that allows friends to post messages for the user to see; Pokes, which allow users to send a virtual "poke" to each other; Gifts, a feature allowing users to send virtual gifts which appear on the recipient's profile; Market places, which lets users post free classified goods, etc.

To open an account online, please go to: <http://www.facebook.com/>.

## 11.7 mTweet.....

Twitter is a social networking and microblogging service that has gained notability and popularity worldwide. This feature enables phone users to exchange news updates and ideas with a community in the form of messages or posts. Posts are displayed on the author's profile page and delivered to the author's subscribers or followers.

To open an account online, please go to: <http://twitter.com/>.

### Music active.

### Sending an SMS.

**Silence mode:** your phone does not ring, beep or vibrate with the exception of the alarm.

### SMS unread.

### MMS unread.

### MMS busy.

### Flight mode.

### 1.3 Home screen

You can customize your Home screen by selecting **"Personalize"** through Right softkey.

#### 1.3.1 Widget bar

Widgets are convenient shortcuts for quick access from the Home screen.

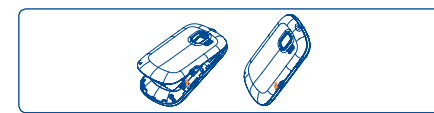
#### 1.3.2 Change wallpaper

You can select a folder to choose one image as favorite wallpaper by selecting **"Change wallpaper"**.

## 2 Getting started.....

### 2.1 Set-up

#### Removing or installing the back cover



#### Inserting or removing the SIM card

You must insert your SIM card to make phone calls. Please power off your phone and remove battery before inserting or removing the SIM card.



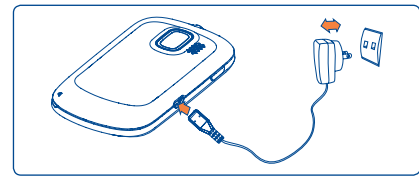
Place the SIM card with the chip facing downwards and slide it into its housing. Make sure that it is correctly inserted. To remove the card, press the bottom and slide it out.

#### Installing or removing the battery



Insert and click the battery into place, then close the telephone cover. Unclip the cover, then remove the battery.

### Charging the battery



Connect the battery charger to your phone and outlet respectively.

To reduce power consumption and energy waste, when battery is fully charged, disconnect your charger from the plug; switch off Bluetooth or background-running applications when not in use; reduce the backlight time, etc.

### 2.2 Power on your phone

Hold down the **1** key until the telephone powers on.

### 2.3 Power off your phone

Hold down the **1** key from the Home screen.

## 3 Making a call .....

Dial the desired number then press the **1** key to place the call. The number you entered can be saved to **Contacts** by selecting **"Save"**. If you make a mistake, you may press Right softkey to delete the incorrect digits one by one, or you may press and hold Right softkey to delete all.

To hang up the call, press the **1** key.

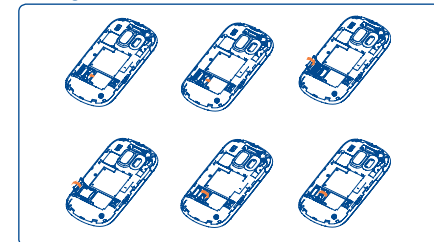
## 14 Profiles .....

With this menu, you may personalize ringtones for different events and environments.

## 15 File manager .....

You will have an access to all audio and visual files stored in phone or SD card in File manager. You can access a number of items with this option: **My audios, My images, My videos, Ebook, My creations**, etc.

### Inserting the SD card:



To release the microSD card holder, slide it in the direction of the arrow and lift it. Then insert the microSD card with the golden contact downward. Finally, turn down the microSD holder and slide it in the opposite direction to lock it.

## 16 Bluetooth™ .....

Access this feature by pressing **"Menu"** through Left softkey from the Home screen to enter the main menu, then selecting **"Bluetooth"**.

## 17 Others.....

### 17.1 Calendar.....

Once you enter this menu from main menu, there is a monthly-view calendar for you to keep track of important meetings, appointments, etc. Days with events entered will be marked in color.

ALCATEL is a trademark of Alcatel-Lucent and is used under license by TCT Mobile Limited.

All rights reserved © Copyright 2012 TCT Mobile Limited.

TCT Mobile Limited reserves the right to alter material or technical specification without prior notice.

**⚠** Prolonged exposure to music at full volume on the music player may damage the listener's hearing. Set your phone volume safely. Use only headphones recommended by TCT Mobile Limited and its affiliates.

