



Some services and apps may not be available in all countries.
Please ask in-store for details.

Facebook is a trademark of Facebook, Inc.
The Twitter marks are trademarks of Twitter, Inc.
Google, Android, YouTube and other marks are trademarks of Google Inc.
Shazam is a trademark of Shazam Entertainment Limited.
The Expedia Airplane logo is a trademark of Expedia, Inc.

© 2012 Vodafone Group. VODAFONE and the VODAFONE logos are
trade marks of Vodafone Group. Other product names mentioned
herein may be the trade marks of their respective owners.



User manual
Vodafone Smart II

vodafone

Notice

Copyright © 2012 TCT Mobile Limited

All Rights Reserved

Your phone is made exclusively for Vodafone by TCT.

No part of this manual may be reproduced or transmitted in any form or by any means without prior written consent of TCT.

Trademarks

VODAFONE, the Vodafone logos are trade marks of the Vodafone Group. Other product and company names mentioned herein may be trade marks of their respective owners.

TCT is a trademark of TCT.

The Bluetooth® word mark and logos are owned by Bluetooth® SIG, Inc. Bluetooth® QDID (Qualified Design ID): B019112

microSD™ is a trade mark of SD Card Association.

Licences



microSD Logo is a trademark.



The Bluetooth word mark and logos are owned by the Bluetooth SIG, Inc. and any use of such marks by TCT Mobile Limited and its affiliates is under license. Other trademarks and trade names are those of their respective owners.

Vodafone Smart II Bluetooth QD ID B019112



The Wi-Fi Logo is a certification mark of the Wi-Fi Alliance. Your device uses non-harmonised frequency and is intended for use in all European countries.

The WLAN can be operated in the EU without restriction indoors, but cannot be operated outdoors in France.

Google, the Google logo, Android, the Android logo, Google Search, Google Maps, Gmail, YouTube, Android Market, Google latitude and Google Talk are trademarks of Google Inc.

Notice

The information in this manual is subject to change without notice. Every effort has been made in the preparation of this manual to ensure accuracy of the contents, but all statements, information, and recommendations in this manual do not constitute a warranty of any kind, expressed or implied. Read the safety precautions and safety information carefully to ensure that you use this wireless device in a correct and safe manner.

TCT Mobile Limited Address:

TCT Mobile Europe SAS, 55 Av. des champs pierreux Le Capitole, Noyau B, 1er étage, 92000 Nanterre, France.

Website: <http://www.vodafone.com/smart2>

Table of Contents

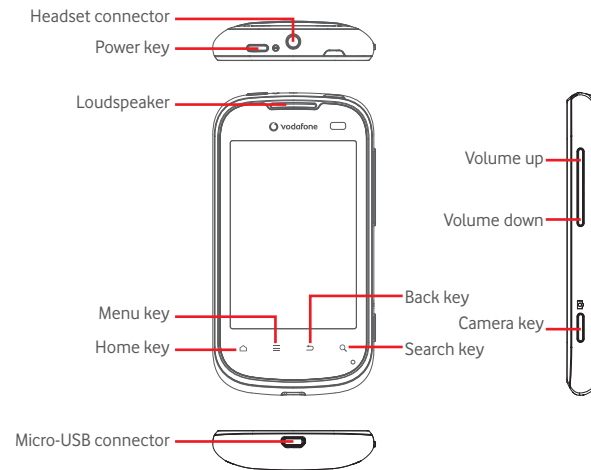
1	Your phone	6
1.1	Keys and connectors.....	6
1.2	Getting started.....	8
1.3	Home screen.....	13
1.4	Applications list.....	22
2	Text input	24
2.1	Using the onscreen keyboard.....	24
2.2	Text editing.....	25
3	Phone calls, Call log and Contacts	26
3.1	Phone.....	26
3.2	Call history.....	30
3.3	Contacts.....	31
4	Google Messaging, Gmail/Email, Google Talk	38
4.1	Google Messaging.....	38
4.2	Gmail/Email.....	44
4.3	Google Talk.....	49
5	Google Calendar & Alarm clock & Calculator	52
5.1	Google Calendar.....	52
5.2	Clock.....	54
5.3	Calculator.....	56
6	Getting connected	57
6.1	Connecting to the Internet.....	57
6.2	Browser.....	60
6.3	Connecting to Bluetooth devices.....	67
6.4	Connecting to a computer via USB.....	68
6.5	Sharing your phone's mobile data connection.....	69
6.6	Connecting to virtual private networks.....	71

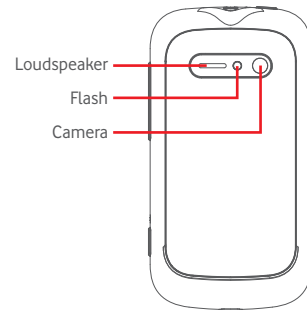
7	Android Play Shop	73
7.1	Locate the item you want to download and install.....	73
7.2	Download and install.....	74
7.3	Manage your downloads.....	76
8	Multimedia applications	78
8.1	Camera/Camcorder.....	78
8.2	Gallery.....	81
8.3	YouTube.....	83
8.4	Music.....	84
8.5	Sound Recorder.....	86
8.6	Videos.....	87
8.7	FM Radio.....	87
9	Google Maps	89
9.1	Get My Location.....	89
9.2	Search for a location.....	90
9.3	Star a location.....	91
9.4	Get driving, public transport or walking directions.....	92
9.5	Arrangement of layers.....	94
9.6	Join Latitude to see your friends' locations and share yours with them.....	94
10	Others	98
10.1	FileManager.....	98
10.2	SyncML Client.....	98
10.3	Torch.....	99
10.4	Other applications.....	99
11	Settings	100
11.1	Wireless & networks.....	100
11.2	Call settings.....	102
11.3	Sound.....	103
11.4	Display.....	105

11.5	Location & security	105
11.6	Applications.....	107
11.7	Accounts & sync.....	109
11.8	Privacy.....	110
11.9	SD card & phone storage	111
11.10	Language & keyboard	112
11.11	Voice input & output.....	115
11.12	Accessibility	116
11.13	Date & time.....	117
11.14	About phone	118
12	Making the most of your phone.....	119
12.1	FOTA Upgrade	119
13	Safety and use	120
14	Telephone warranty	127
15	Accessories	129
16	Troubleshooting.....	130
17	Specifications.....	134

1 Your phone

1.1 Keys and connectors





Power key

- Short press: Wake the phone when in sleep mode
Lock the screen.
End a call when active.
- Long press: Turn the phone on
Choose Silent mode, Airplane mode or Power off

Home key

- Short press: Return to the Home screen or back to the central Home screen if it is extended.
- Long press: Enter the recently used applications list.

Menu key

- On the Home screen, press to quickly access Settings menu or Notification panel; to launch quick search; to customise your Home screen by adding applications or changing wallpaper.
- On other screens, press to view options list.

Back key

- Go back to the previous menu or screen.

Search key

- Open Search bar for searching within an application, the phone or web.

Volume Keys

- Adjust the volume during a call, or when playing music or videos.
- Adjust the ring tone volume in general mode.

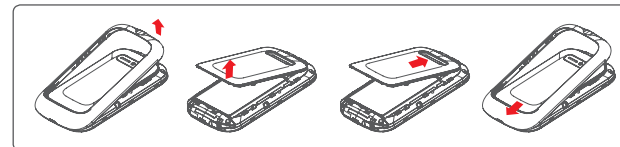
Camera key

- Long press: Start up the camera.
- Short press: take a photo or start/stop recording a video when on camera or video preview screen.

1.2 Getting started

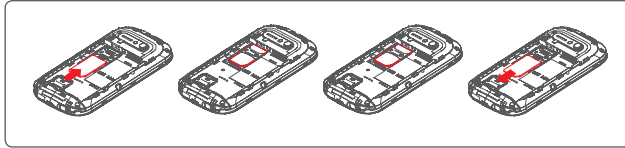
1.2.1 Set up

Removing or installing the back cover



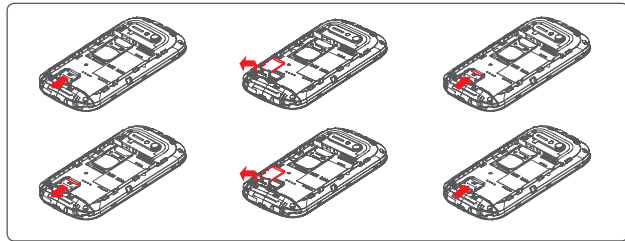
Inserting or removing the SIM card⁽¹⁾

You must insert your SIM card to make phone calls. Please power off your phone and remove the battery before inserting or removing the SIM card.



Place the SIM card with the chip facing downwards and slide it into its housing. Make sure that it is correctly inserted. To remove the card, press and slide it out.

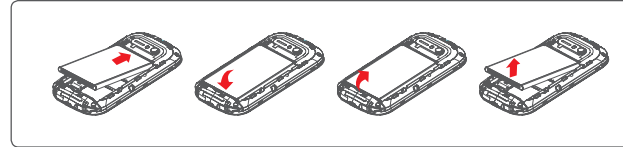
Installing and removing the microSD card



To release the microSD card holder, slide it in the direction of the arrow and lift it. Then insert the microSD card with the golden contact downward. Finally, fold down the microSD holder and slide it in the opposite direction to lock it.

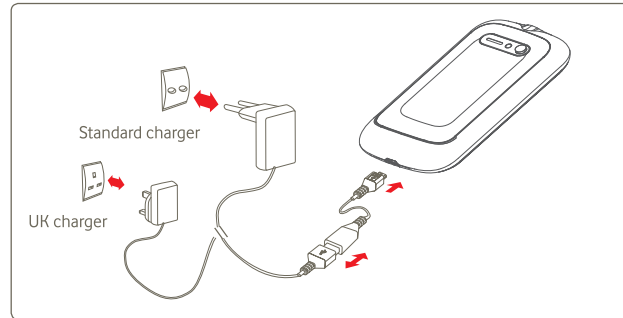
⁽¹⁾ Your SIM card must be 3V or 1.8V compatible. If your SIM card does not work, please contact Vodafone, as it may be an older 5V SIM.

Installing or removing the battery





- To install, insert and click the battery into place, then close the phone cover.
- To remove the battery, first power the phone off. Then unclip the cover and remove the battery.

Charging the battery



Connect the battery charger to your phone and mains socket respectively.

- The phone will be switched on when charging the battery.
- Be careful not to force the plug into the socket.
- Make sure the battery is correctly inserted before connecting the charger.
- The mains socket must be near to the phone and easily accessible (avoid electric extension cables).
- When using your telephone for the first time, charge the battery fully (approximately 4 hours).

You are advised to fully charge the battery (). Charging status is indicated by a lightning icon and an increasing level of green in the battery symbol () on the top icon bar.



To reduce power consumption and energy waste, when the battery is fully charged: disconnect your charger from the plug; switch off Wi-Fi, GPS, Bluetooth or background-running applications when not in use; reduce the backlight time, etc.

1.2.2 Turn on your phone

Hold down the **Power** key until the phone powers on. It will take some seconds before the screen lights up.

If you do not know your PIN code or if you have forgotten it, contact your network operator. Do not leave your PIN code with your telephone. Store this information in a safe place when not in use.

Set up your phone for the first time

The first time you power on the phone, you are asked to touch the Android logo to begin. And then sign into your Google account to synchronise email, contacts, calendar and other Google applications ⁽¹⁾.



⁽¹⁾ Application availability is dependent on the country you're based in.

- **Select your Language:** Touch **Change language** to select the phone's language, then touch **Next**.
- Read the information on the screen, then touch **Next** or **Skip**.
- **Mobile Data Explained:** Mark/Unmark the check box to choose the **Data Enabled** or the **Data Roaming**, then touch **Next**.
- **Setup Wi-Fi:** Touch set Wi-Fi to add new Wi-Fi network. Touch **Skip** to enter next option, you could set it later at **Settings/Wireless & networks/Wi-Fi settings**.
- **Apps make life easier:** If you have a Google Account, touch **Setup Now/Sign in**, then enter your user name and password. If you forget your password, you can go to <http://www.google.com/> to retrieve it. If you don't own a Google Account, you are prompted to create one by touching **Create**. Touch **Skip** to enter next option.
- **Date & time:** To set up the date and time, then touch **Next**.
- **Manage contacts or set Security:** To manage your contacts or set your phone's security, then touch **Finish**.



You can always go to this initial setup again by touching **Applications tap/Setup Wizard**.

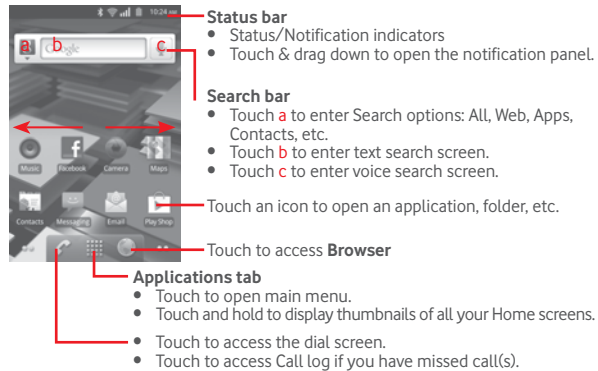
If you don't have a SIM card inserted you can still connect to a Wi-Fi network from the Power on screen, which will let you sign on to your Google account and use some features.

1.2.3 Power off your phone

Hold down the **Power** key from the Home screen until the **Phone options** appear, select **Power off**.

1.3 Home screen

You can bring all the things you use most frequently (applications, shortcuts, folders and widgets) to your Home screen for quick access. Press the **Home** key to switch to the Home screen.



The real Home screen depends on different districts and operators.

The Home screen also includes other screens on either side of it to allow for more space for adding applications, shortcuts, etc.

Touch the small dots on either side of the Applications tab to move to the next screen available. Touch & hold the dots to display thumbnails of the other screens, then touch a thumbnail to open it.

1.3.1 Using the touchscreen



Touch

To access an application, touch it with your finger.

Touch & hold



To enter the available options for an item, Touch & hold the item. For example: select a contact in Contacts, Touch & hold this contact, and an option list will then appear on screen.

Drag



Place your finger on the touchscreen to drag an object to another location.

Slide/Swipe



Slide the screen to scroll up and down the applications, images, web pages... You could slide the screen horizontally too.

Flick



Similar to swiping, but flicking makes it move quicker.

Pinch/Spread



Place your fingers of one hand on the screen surface and draw them apart or together to scale an element on the screen.

Rotate

































Automatically change the screen orientation from portrait to landscape by turning the phone sideways.




























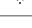

1.3.2 Status bar

From the Status bar, you can view both phone status (to the right side) and notification information (to the left side). When the Status bar is full, "⊕" icon will appear, touch to display hidden icons.

Status icons

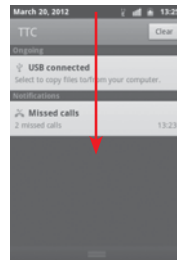
	GPRS connected		GPS is on
	GPRS in use		Receiving location data from GPS
	EDGE connected		Speakerphone is on
	EDGE in use		Roaming
	3G connected		No signal
	3G in use		No SIM card installed
	HSPA (3G+) connected		Vibrate mode
	HSPA (3G+) in use		Ringer is silenced
	Connected to a Wi-Fi network		Phone microphone is mute
	Bluetooth is on		Battery is very low
	Connected to a Bluetooth device		Battery is low
	Airplane mode		Battery is partially drained
	Alarm is set		Battery is full
	Signal strength		Battery is charging
	Car mode		Headset connected

Notification icons

	New Gmail message		More notifications are hidden
	New text or multimedia message		Call in progress (green)
	Problem with text or multimedia message delivery		Call in progress using Bluetooth headset (blue)
	New Google Talk message		Missed call
	New voicemail		Call on hold
	Upcoming event		Call forwarding is on
	Data is synchronizing		Uploading data
	Problem with sign-in or synchronisation		Downloading data
	microSD card is full		Download finished
	No microSD card installed		An open Wi-Fi network is available
	Connected to VPN		Phone is connected via USB cable
	Disconnected from VPN		Radio is on
	Song is playing		System update available
	USB tethering is on		Portable Wi-Fi hotspot is on
	Both USB tethering and portable hotspot are on		

Notification panel

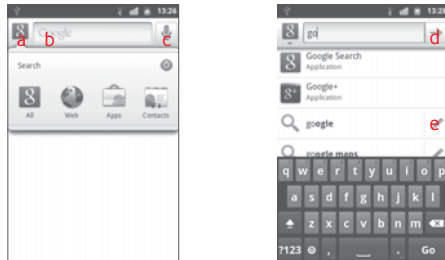
To open the notification panel, touch & drag down from the Status bar or press the **Menu** key and touch **Notifications**. Touch & drag up to close it. From the Notification panel, you can open items and other reminders indicated by notification icons or view wireless service information.



Touch **clear** to clear all event-based notifications (other ongoing notifications will remain).

1.3.3 Search bar

The phone provides a Search function which can be used to locate information within applications, the phone or the web.



- a Touch to enter targets of Search: All, Web, Apps, Contacts, etc.
- b Touch or press the keypads to search by text
- c Touch to search by voice
- d Touch to search the web
- e Touch to enter the suggested text for quick search

Search by text

- Touch Search bar or press the **Menu** key then touch **Search** from the Home screen, or press **Search** key from other applications screen.
- Enter the text/phrase you want to search for.
- Touch **→** if you want to search on the web.

Search by voice

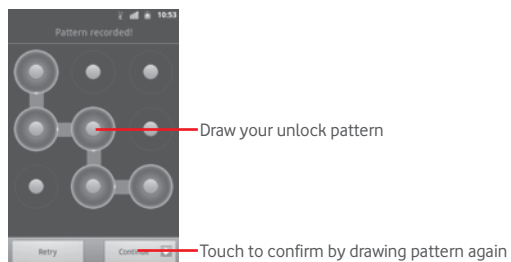
- Touch **🎤** from Search bar to display a dialog screen.
- Speak the word/phrase you want to search for. A list of search results will display for you to select from.

1.3.4 Lock/Unlock your screen

To protect your phone and privacy, you can lock the phone screen by creating a variety of patterns, PIN or password.

To create a screen unlock pattern (refer to section "11.5.2 Screen unlock/Set up screen lock" for detail settings)

- Press **Menu** key from the Home screen, touch **Settings**, then touch **Location & security/Set up screen lock/Pattern**.
- Draw your own pattern, you can also press **Menu** key for help.




To create a screen unlock PIN/Password

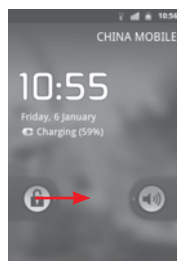
- Press **Menu** key from the Home screen, touch **Settings**, then touch **Location & security/Set up screen lock/PIN or Password**.
- Set your PIN or password.

To lock phone screen

Press the **Power** key once to lock the screen.

To unlock phone screen

Draw the unlock pattern you have created or enter PIN or password to wake up the screen. If you did not set the unlock screen, drag right the lock icon  to unlock it.



1.3.5 Personalise your home screen

Add

You can add shortcuts, widgets or folders to the Home screen by touching & holding an empty area, or pressing the **Menu** key, and touching **Add**. The **Add to Home screen** will appear, offering a range of options.

- **Shortcuts** To add a shortcut to the Home screen, such as applications, bookmark, contact, etc.
- **Widgets** To add a widget to the Home screen, such as clock, calendar, etc.
- **Folders** To add a folder to the Home screen, such as new folder, contact folder, etc.

To improve the organization of the Home screen items (shortcuts, widgets), you can add them to a folder by touching and dragging them onto the folder of your choice. To rename a folder, open it, Touch & hold the folder's title bar to open the Rename folder dialog box, then enter the new folder name and confirm with **OK**.

Reposition

Touch & hold the item to be repositioned to activate the Move mode, then drag it to the place you want and release it. Hold the icon on the left or right edge of the screen to drag the item to another Home screen page.

Remove

Touch & hold the item to be removed to activate the Move mode. Drag the item to the top of the Applications tab, which will then turn red, and release.

Wallpaper customisation

Touch & hold an empty area or press **Menu** key and touch **Wallpaper** on the Home screen, a popup window named **Select wallpaper from** will appear, offering a range of options. **Gallery** includes pictures you have taken, cropped or downloaded. **Live wallpaper** include a scrolling list of animated wallpapers. **Wallpapers** includes all preset wallpapers in the phone. Slide left and right to locate a desired image, touch **Set wallpaper** to confirm.

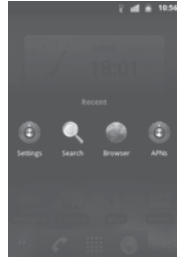
1.3.6 Applications tab

Touch  on the Home screen to enter applications list.

To return to the Home screen, press the **Home** key.

Consult recently-used applications

To consult recently-used applications, you can press and hold the **Home** key from the Home screen. Touch an icon in the window to open the related application.



1.3.7 Volume adjustment




Using volume key

Press **Volume up/down** key to adjust the volume. While in the lowest volume level, your phone will now be switched to Silent mode or Vibrate mode ⁽¹⁾.

Using Settings menu

Press **Menu** key from the Home screen, then touch **Settings/Sound**, you can set ringer, media and phone ringtone volume to your preference.

Sound on/off

When the screen is locked, drag left the icon  to switch sound off, drag right the icon  or  to switch sound on ⁽¹⁾.

1.4 Applications list

The Applications list contains all pre-embedded and newly installed applications.

To access the Applications list, touch  from the Home screens. To return to the Home screens, press the **Home** key.

1.4.1 Normal mode and sort mode

Applications can be managed in two modes. To switch between the two modes, press **Menu** key from applications list screen, and touch **Switch view**.

- **Normal mode (default)** All applications are listed in alphabetical order.
- **Sort mode** All applications are sorted by several categories.

⁽¹⁾ The phone setting will vary depending on the changes made to the default settings in **Settings/Sound/Vibrate**.

1.4.2 Managing Categories

There are 8 categories in total: 5 categories are predefined, and you can add 3 more.

Press the **Menu** key, and select **Edit** to enter edit mode. Within edit mode you can now customise categories.

- **Rename Category** Locate the category you want to rename, touch to display options menu, then touch **Rename Category**. When finished, touch **OK**.
- **Remove Category** Locate the category you want to remove, touch to display options menu, then touch **Remove Category**.
- **Add a category** Press the **Menu** key, then touch **Add Category** to create a new category name. When finished, touch **OK**. You can select some applications to move into the new category, and confirm by touching **OK** again.
- **Move an application among categories** Locate the application you want to move, touch to display the categories list, then touch the desired category name.

2 Text input

2.1 Using the onscreen keyboard

An onscreen keyboard will display automatically when a program requires you to text or numbers.

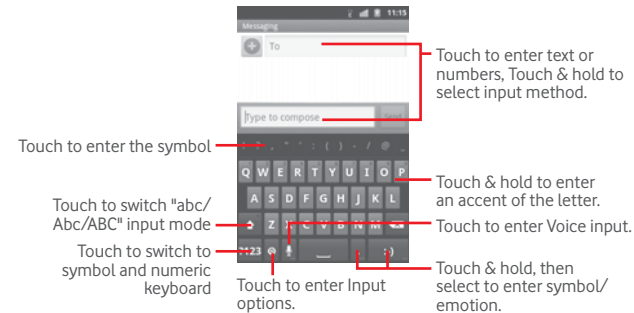
Onscreen keyboard settings

Press the **Menu** key from the Home screen, then select **Settings/Language & keyboard/Swype** (or **Android keyboard**) to see the various keyboard settings. Scroll to select the keyboard style you want to change.

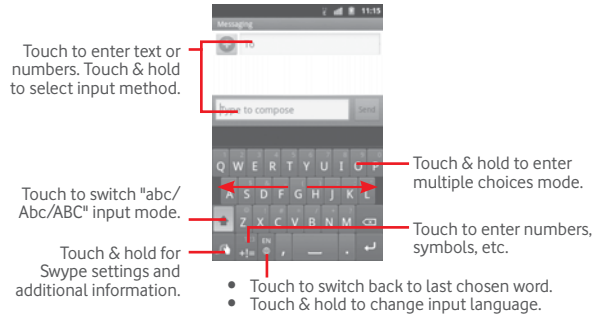
Change the onscreen keyboard orientation

Turn the phone sideways or upright to change the onscreen keyboard orientation. You can also change it in the keyboard settings (press the **Menu** key in the Home screen, then **Settings/Display/Quoto-rotate screen**).

2.1.1 Standard Android keyboard



2.1.2 Swype keyboard



2.2 Text editing

You can edit the text you have entered.


- Touch & hold text you have entered
- An options list pops up
- Select the operation you need (**Select all**, **Select text**, **Cut all**, **Copy all**, etc.)

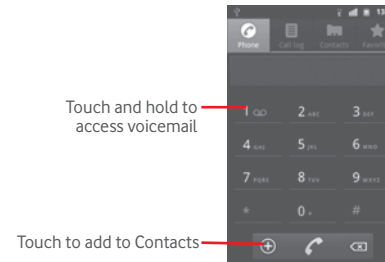
3 Phone calls, Call log and Contacts


3.1 Phone


3.1.1 Making a call

To quickly open the **Phone** application:

- Touch  from the Home screen.
- Touch the Applications tab from the Home screen and select **Phone**.



Enter the number you want using the keyboard, or select a contact from **Contacts**, **Call log** or **Favourites** by touching the upper tabs, then touch  to place the call.


The number you entered can be saved to **Contacts** by touching  or pressing the **Menu** key and touching **Add to Contacts**.

Press the **Menu** key to add 2-sec pause or wait.


If you make a mistake, you can delete the incorrect digits by touching .

To hang up a call, touch **End** or **Power** key when the **Settings/Accessibility/Power button ends call** option is activated.

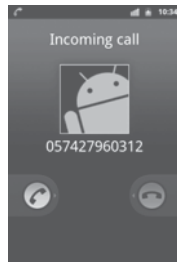
International call

To dial an international call, Touch & hold **0** enter "+", then enter the international country prefix followed by the full phone number and finally touch .

Emergency call

If your phone has network coverage, dial emergency number and touch  to make an emergency call. This works even without a SIM card and without typing the PIN code.

3.1.2 Answering or rejecting a call



When you receive an incoming call, drag the green phone icon over to the right to answer.

When you receive an incoming call, but don't want to answer, you may decline it by dragging the red phone icon over to the left. The caller is sent directly to your voicemail box to leave a message.


To mute the ringtone volume of an incoming call, press the **Volume up/down** key.

3.1.3 Calling your voicemail

Your voicemail is provided by your network to avoid missing calls. It works like an answering machine that you can consult at any time.

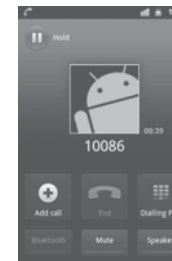
To access your voicemail, Touch & hold **1** on **Phone** tab.

To set your voicemail number, enter **Settings/Call settings/Voicemail settings**.

If you receive a voicemail, a voicemail icon  appears on the Status bar. Open the Notification panel, touch **New voicemail**.

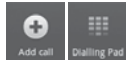
3.1.4 During a call

To adjust the volume during a call, press the **Volume up/down** key.





Touch to hold the current call. Touch this icon again to retrieve the call.



Touch to display Dialpad.



Touch to end the current call.



Touch to switch between bluetooth headset and phone.



Touch to mute the current call. Touch this icon again to unmute the call.



Touch to activate the speaker during the current call. Touch this icon again to deactivate the speaker.




To avoid misoperation on touchscreen during a call, screen will be locked automatically when the user put the phone close to his/her ear, and it will be unlocked when put the phone away.

3.1.5 Managing multiple calls

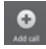

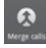




With this phone you can handle multiple calls at the same time.

Swap calls



When you accept two calls, touch icon , you can now switch between two lines. The current call is put on hold and you have joined in the other call. Press the **Menu** key to display options list.




Conference calls ⁽¹⁾

You can set up a conference call.

- Place a call to the first participant of the conference call.
- Touch icon .
- Enter the phone number of the person you want to add to conference and touch icon . You can also add participants from **Contacts**, **Call log** or **Favourites**.
- Touch icon  to start conference call.
- During a conference call, touch  to drop a participant or to talk privately to one of the participants. Touch  to drop the participant from the conference, touch  to talk privately to the participant and hold on other participants.
- Touch  to end the conference call and disconnect all callers.

3.2 Call history

You can access your call history by touching  from the Home screen and touching **Call log**. Touch  on the right side of contact/number to place a call directly. There are three kinds of calls in Call log:

-  Missed calls
-  Outgoing calls
-  Incoming calls

Touch or touch & hold a contact or number to view information or further operations.

⁽¹⁾ Depending on your network operator.


You can view detailed information of a call, launch a new call or send messages to a contact or number, or add numbers to **Contacts** (only available for phone numbers), etc.

To clear the entire call memory, press the **Menu** key then touch **Clear call log**.

3.3 Contacts

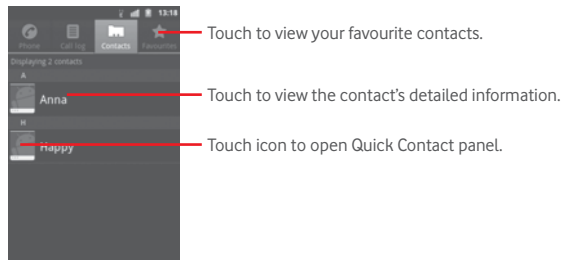
Contacts enables quick and easy access to the people you want to reach.

You can view and create contacts on your phone and synchronize these with your Gmail contacts or other applications on the web or on your phone.

 When using Contacts for the first time you will be asked to add new contacts, import contacts from SIM card (please refer to “**3.3.5 Contacts importing, exporting and sharing**” for detailed information), or synchronize contacts from other application accounts to your phone.

3.3.1 Consult your Contacts

To access the **Contacts**, touch the Applications tab on the Home screen, then select **Contacts**.



Touch & hold a contact to display its option menu.

You can also press the **Menu** key to display contacts list option menu.

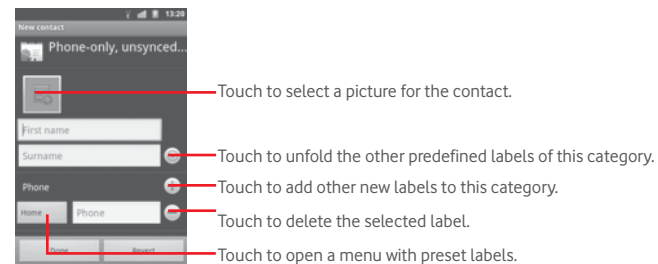
Following actions are enabled:

- **New contact** Add new contacts to the phone.
- **SIM contacts** Manage contacts stored in SIM card.
- **Display options** Choose contacts to display, for example only contacts with phones, other application contacts if any, etc.
- **Accounts** Manage the synchronization settings for different accounts.
- **Import/Export** Import or export contacts between phone, SIM card, and microSD card.
- **More/Sync** Launch synchronization with the account you set.
- **More/Delete** Select and delete unwanted contacts.

3.3.2 Adding a contact


Press the **Menu** key from contacts list screen and touch **New contact**.


You are required to enter the contact's name and other contact information. By scrolling up and down the screen, you can move from one field to another easily.



When finished, touch **Done** to save.

Add to/remove from Favourites


To add a contact to Favourites, Touch & hold a contact to display the contact's option menu, then touch **Add to Favourites**. Or you can also touch a contact to view details then touch  to add the contact to Favourites (the star will turn gold in color).

To remove a contact from Favourites, select **Remove from Favourites** on the contact's option menu or touch the gold star  on contact details screen.

3.3.3 Editing your contacts

To edit contact information, Touch & hold the contact whose information is to be edited, then touch **Edit contact**. When finished, touch **Done**.

Change a contact's default phone number

The default phone number (the number which has priority when making a call or sending a message) will always be displayed under the contact name. To change the default phone number, Touch & hold the number you want to set as the default number from the contact's details screen, then select **Make default number**. A  appears after the number.

Divert calls to voicemail/Set ringtone for a contact

On the contact's detail screen, press the **Menu** key to display contacts list options menu, touch **Options**, then select **Incoming calls** or **Ringtone**.

When one contact has been set to send calls directly to voicemail, if he/she calls, your phone will not ring and the caller will be sent directly to your voicemail.

Delete a contact


To delete a contact, press the **Menu** key and touch **Delete contact** from contact details screen or directly touch & hold a contact from Contacts screen to display contacts list option menu then touch **Delete contact**. Touch **OK** to confirm.




The contact you have deleted will also be removed from other applications on the phone or web the next time you synchronize your phone.

3.3.4 Communicating with your contacts

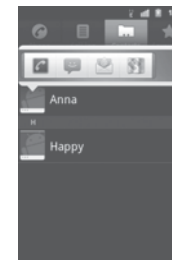
From the contacts list, you can communicate with your contacts by making a call or exchanging messages.

To launch a call to a contact, locate the contact or number you want to call, then touch . You can also touch & hold the contact or number, then touch **Call contact**.

To send a message to a contact, touch & hold the contact or number you want to send a message to, then touch **Text contact**. You can also touch  on the right side of the contact from contact details screen.

Use Quick Contact for Android

Touch a contact's picture to open Quick Contact for Android, then you can touch the icon for the way you want to connect.



The icons available on Quick Contact bar depend on the information you have for the contact and the applications and accounts on your phone.

3.3.5 Contacts importing, exporting and sharing

This phone enables you to import contacts from SIM card/microSD card and export contacts to a microSD card which can then be used to back up your information.

From the Contacts screen, press the **Menu** key to open options menu, touch **Import/Export**, then select **Import from SIM card**, **Export to SIM card**, **Import from SD card**, **Export to SD card** or **Share visible contacts**.

To import/export a single contact from/to SIM card, touch the contact you want to import/export, then touch **OK** to confirm.

To import/export all contacts from/to your SIM card, mark the **Select all** check box, then touch **OK** to confirm.

You can share a single contact or contacts with others by sending the contact's vCard to them via Bluetooth, MMS, Gmail, etc.

Touch a contact you want to share, press the **Menu** key and touch **Share** from contact details screen, then select the way you want to share it.

3.3.6 Displaying contacts

You can configure which group of contacts, for each account, you want to display in the Contacts list. To hide/display contacts that don't have phone numbers, press the **Menu** key from contacts list screen, touch **Display options**, then activate or deactivate **Only contacts with phones** by touching it. Finally, touch **Done** to save. The same operation for other two options: **Sort list by**, **View contact names as**.

3.3.7 Joining/Separating contacts

To avoid duplication, you can add any new contact information to existing contacts in a single action.

Touch the contact which you want to add information to, press the **Menu** key and touch **Edit contact**, then press the **Menu** key again and touch **Join**.

At this time, you are required to select the contact whose information you want to join with the first contact. The information from the second contact is added to the first one, and the second contact will no longer be displayed in the Contacts list.

To separate contact information, touch the contact whose information you want to separate, press the **Menu** key and touch **Edit contact**, then press the **Menu** key again and touch **Separate**, touch **OK** to confirm.

3.3.8 Accounts

Contacts, data or other information can be synchronized from multiple accounts, depending on the applications installed on your phone.

To add an account, press the **Menu** key from Contacts list, touch **Accounts**, then touch **Add account** tab; or access it by pressing **Menu** key from the Home screen, then touch **Settings/Accounts & sync/Add account**.

You are required to select the kind of accounts to add, like Google, Corporate, etc.

As with other account set ups, you need to enter detailed information, like username, password, etc.

You can remove an account to delete it and all associated information from the phone.

Open the **Accounts & sync settings** screen, touch the account you want to delete, then touch **Remove account** and confirm.

Useful icons:



Indicates that the account is configured to synchronize automatically with your phone.



Indicates that the account is not configured to synchronize automatically with your phone.

Background data

Activate or deactivate **Background data** to control whether applications or services data can be transmitted when they are running in the background. Applications can synchronize, send, and receive data at any time if activated.

For example, if deactivated, Gmail will stop receiving new emails until you touch the **Refresh** or send an email.

Auto-sync

When activated, all changes to information on the phone or online will be automatically synchronized to each other.

Sync manually

You can synchronize an account manually on **Accounts & sync settings** screen, and you must touch an account in the list on this screen, press the **Menu** key and touch **Sync now**.

4 Google Messaging, Gmail/Email, Google Talk

4.1 Google Messaging.....

You can create, edit and receive SMS and MMS messages with your phone.

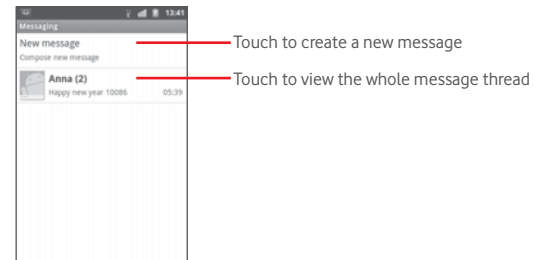
To start, touch the Applications tab from the Home screen, then select **Messaging**.



All messages you receive or send out can only be saved in phone memory. To view older messages stored on your SIM card, press the **Menu** key in the **Messaging** screen, then touch **Settings/Manage SIM card messages**.

4.1.1 Write a message

In the message list screen, touch **New message** to write text/multimedia messages.



Sending a text message

Enter the mobile phone number of the recipient in the **To** bar or touch **+** to add numbers from your Contacts, then touch the **Type to compose** bar to enter the text of the message. When finished, touch **Send** to send the text message.

An SMS message of more than 160 characters will be charged as several SMS. When the total number of characters you have entered is approaching the 160-character limit, a counter will appear on the lower right corner below Send option of the text box to remind you how many characters are allowed to be entered in one message.



Specific letters (accent) will increase the size of the SMS, which may cause multiple SMS to be sent to your recipient.

Sending a multimedia message

MMS enables you to send video clips, images, photos, animations, slides and sounds to other compatible mobiles and e-mail addresses.

An SMS will be converted to MMS automatically when media files (image, video, audio, slides, etc.) are attached or subject or email addresses are added.

To send a multimedia message, enter the recipient's phone number in the **To** bar, touch **Type to compose** bar to enter the text of the message. Press the **Menu** key to open the option menu, touch **Add subject** to insert a subject, and touch **Attach** to attach picture, video, audio or slide.

When finished, touch **Send MMS** to send the multimedia message.

Attach options:

- **Pictures** Access Gallery application or File manager to select a picture as attachment.
- **Capture picture** Access Camera to capture a new picture for attaching.
- **Videos** Access Gallery application or File manager to select a video as attachment.
- **Capture video** Access Camcorder to record a new video for attaching.
- **Audio** Access to select an audio file as attachment.
- **Record audio** Enter voice message recorder to record a voice message for attaching.
- **Contact** Access Contacts to attach a vCard of a contact.
- **Appointments** Access Calendar to attach an appointment.
- **Slideshow** Enter Edit slide show screen, touch **Add slide** to create a new slide, and touch currently existing slide to edit it (see following picture). Press the **Menu** key to get more actions, like setting the slide duration, adding music, etc.




Touch to go to previous or next slide.

Touch to preview the current slide.

Touch to edit the title of this slide.

4.1.2 Manage messages

When receiving a message, an icon  will appear on status bar as notification. Drag down the status bar to open the Notification panel, touch the new message to open and read it. You can also access the Messaging application and touch the message to open.

Messages are displayed in conversational order.

To reply to a message, touch the current message to enter message-composing screen, enter the text, then touch **Send**.

To return to the message list from a text message thread, press the **Menu** key and then touch **More/All threads**.

Touch & hold a message in message details screen. The following message options are available for selection:

- **Lock/Unlock message** Touch to lock/unlock the message so it can/can't be deleted if you reach maximum number of stored messages.
- **Call XXX** Touch to call the message sender.
- **Add XXX to Contacts** ⁽¹⁾ Touch to save the number to Contacts.
- **Forward** Touch to forward the message to another recipient.
- **Copy message text** * This option displays when the message is an SMS. Copy the current message content. You can paste it to the enter bar of the new message you are going to compose.
- **View message details** Touch to view details of the message.
- **Delete message** Delete the current message.
- **Save to template** Save the current message to Message template.

⁽¹⁾ Option will not appear unless the number is not saved in the Contacts.

4.1.3 Adjust message settings

You can adjust a set of message settings. From Messaging application screen, press the **Menu** key and touch **Settings**.

Storage settings

- **Delete old messages** Select to delete old messages when the maximum number of stored messages is reached.
- **Text-message limit** Touch to set the number of text messages to be saved per conversation.
- **Multimedia message limit** Touch to set the number of multimedia messages to be saved per conversation.
- **Service Center** Touch to view the service center number.

Text message (SMS) settings

- **Delivery reports** Select to request a delivery report for each text message you send.
- **Manage SIM card messages** Touch to manage text messages stored on your SIM card.
- **Character optimization** Mark to use the similar ASCII character.

Multimedia message (MMS) settings

- **Delivery reports** Select to request a delivery report for each multimedia message you send.
- **Read reports** Select to request a report on whether each recipient has read a multimedia message sent by you.
- **Auto-retrieve** Select to download the full MMS message (including message body and attachment) automatically to your phone. Otherwise, download only the MMS message header.
- **Roaming auto-retrieve** Select to download the full MMS message (including message body and attachment) automatically when roaming. Otherwise, download only the MMS message header to avoid extra charges.
- **Maximum message size** Touch to set maximum message size.
- **Creation mode** Touch to set MMS creation mode when composing message.
- **MMS Priority** Touch to set MMS priority.

Notification settings

- **Notifications** Select to display message notifications in status bar.
- **Select ringtone** Touch to select a ringtone as a new message notification tone.
- **Vibrate** Select to have phone vibrate as a notification when receiving a new message.

4.2 Gmail/Email

The first time you set up your phone, you can select to use an existing Gmail or to create a new Email account.

4.2.1 Gmail.....




As Google's web based email service, Gmail is configured when you first set up your phone. Gmail on your phone can be automatically synchronized with your Gmail account on the web. Unlike other kinds of email account, each message and its replies in Gmail are grouped in your inbox as a single conversation; all emails are organized by labels instead of folders.

To access Gmail

From the Home screen, touch the Applications tab to enter the applications list, then touch **Gmail**.

Gmail displays messages and conversations from one single Gmail account at a time, if you own more than one account, you can switch to another by pressing **Menu** key from Inbox screen, touching **Accounts**, then touching the account you want to view.


To create and send emails

- Press the **Menu** key from Inbox screen, and touch **Compose**.
- Enter recipient(s)'s email address in **To** field, and if necessary, press the **Menu** key and touch **Add Cc/Bcc** to add a copy or a blind copy to the message.
- Enter the subject and the content of the message.
- Press the **Menu** key, touch **Attach** to send an attachment to the receiver.
- Finally, touch  or press the **Menu** key then **Send**.
- If you do not want to send the mail out right away, you can touch **Menu** key then **Save draft** to save copy. To view the draft, press the **Menu** key from Inbox screen and touch **Go to labels**, then select **Drafts**.

- If you do not want to send or save the mail, you can press the **Menu** key then touch **Discard**.

To add a signature to emails, press the **Menu** key from inbox screen, and touch **More/Settings**, then touch an account to set **Signature**.

To receive and read your emails

When a new email arrives, you will be notified by a ringtone or vibration, and an icon  will appear on Status bar.

Touch and drag down the Status bar to display the Notification panel, touch the new email to view it. Or you can also access the Gmail Inbox label and touch the new mail to read it.

If you want to go back to the Inbox label while reading a new message, you can press the **Back** key or press the **Menu** key and touch **Go to inbox**.

You can search for an email by sender, subject, label, etc.

- from inbox screen, press the **Menu** key and then touch **Search**
- enter the keyword you want to search for in the searching box and touch search icon.

To reply or forward emails

When viewing an email, you will see three icons offering further options at the centre of the conversation.

- **Reply/Reply all** Touch to enter text-inputting mode, enter the message you want to reply, then touch **Send** to send this message to one single recipient or all people in a mail loop.
- **Forward** Touch to forward the message to another person. You are required to enter the new recipient's email address and then touch **Send**.

Managing Gmails by Labels

To conveniently manage conversations and messages, you can organize them using a label.

To label a conversation when reading a conversation's messages, press the **Menu** key, touch **Change labels** and select the label to assign to the conversation.

To view conversations by labels when viewing your inbox or another conversation list, press the **Menu** key and touch **Go to labels**. Touch a label to view a list of conversations with that label.

Touch & hold an email to produce the following options:

- **Read** To read the selected email.
- **Archive** To archive the email message. To display the archived messages, you can press the **Menu** key in inbox screen and touch **View labels**, then **All mail**.
- **Mute** To mute the entire conversation. When muted, new mails related to this conversation will not be displayed in **Inbox**, but archived.
- **Mark read/Mark unread** To mark an email message as read or unread.
- **Delete** To delete the email message.
- **Add star/Remove star** To assign a star or remove the star from the conversation.
- **Change labels** To add or change the label of the email message or conversation.
- **Report spam** To report the email message/conversation as spam.

Gmail settings

To manage Gmail settings, press **Menu** key in Inbox screen and touch **More/Settings**,

General preferences

- **Message Actions** Touch to select
- **Clear search history** Touch to remove the search history.
- **Clear "Show pictures"** Touch to remove the show pictures.

Touch an account to set:

- **Signature** To add a signature text to the end of each mail you send.
- **Confirm actions** Select to activate a query when deleting a message or conversation for double confirmation.
- **Reply all** Touch to mark the check box to make the default responding to messages.
- **Auto-advance** Touch to select which screen to show after you delete or archive a conversation.
- **Message text size** Touch to select the gmail text size.
- **Batch operations** Select to add a conversation to a batch for further operation, like archive, delete, change label, etc.
- **Sync inboxes and labels** Touch to open the Label screen, where you can manage conversation synchronization.
- **Email notifications** Select to activate notification when a new email arrives.
- **Labels to notify** Touch to set the notification preferences for synced labels.

4.2.2 Email

Besides your Gmail account, you can also set up external POP3 or IMAP email accounts on your phone.

To access your email, touch the Applications tab from the Home screen, then select **Email**.

An email wizard will guide you through the steps to set up an email account.

- Enter the email address and password of the account you want to set up.
- Touch **Next**. If the account you entered is not provided by a service provider shown on the phone, you will be prompted to go to the email account settings screen to enter settings manually. Or you can touch **Manual setup** to directly enter the incoming and outgoing settings for the email account you are setting up.
- Enter the account name and display name in outgoing emails.
- Touch **Done**.
- To add another email account, you can press **Menu** key and touch **Add account** to create.

To create and send emails


- In the Inbox screen, press the **Menu** key, then touch **Compose**.
- Enter recipient(s)'s email address in **To** field, and if necessary, press the **Menu** key and touch **Add Cc/Bcc** to add a copy or a blind copy to the message.
- Enter the subject and the content of the message.
- Press the **Menu** key, touch **Add attachment** to send an attachment to the receiver.
- Finally, touch **Send**.
- If you do not want to send the mail right away, you can touch **Save as draft** or press the **Back** key to save a copy.

4.3 Google Talk.....

Google's instant messaging service, Google Talk, lets you communicate with your friends whenever they are connected to this service.

To access this feature and sign in, touch the Applications tab from the Home screen, then touch **Talk**. All friends added by using Google Talk from the web or phone will be displayed in your friends list.

Touch your account to enter set your status screen:

- Touch  to set your online status.
- Touch the text box to enter your status message.
- Touch **Done** to save.

To sign out, press the **Menu** key from Friends list to display options, then touch **Sign out**.

4.3.1 Chatting with your friends

To start a chat, touch the name of a friend in your Friends list, then enter your message and finally touch **Send**.

You can invite other friends to join in a group chat by pressing **Menu** key, touching **Add to chat** and then selecting the friend you want to add.

When chatting with more than one friend, you can switch screens by pressing **Menu** key, then touching **Switch chats**.

To return to Friends list screen, press the **Menu** key, then touch **Friends list**.

4.3.2 To add a new friend

From Friends list, press the **Menu** key to open options list and touch **Add Friend** to add a new friend. Enter the Google Talk ID or Gmail address of the friend you want to add, and then touch **Send invitation**.

A notification with this invitation will be received by the friend. By touching the invitation, the friend can select **Accept** or **Cancel** in response.

You can also check all invitations you have sent or received by pressing **Menu** key from Friends list and touching **More/Invites**.

4.3.3 To close a chat

When you want to end a chat, the following two ways are available:

- From Friends list screen, Touch & hold the friend you want to stop chatting with to open Option menu, and then touch **End chat**.
- Press the **Menu** key from chatting screen directly, and then touch **End chat**.

4.3.4 To manage your friends

Besides adding new friends to your friends list, the following actions are available for your choice:

- **To view all friends/most popular friends** By default, only friends that you frequently communicate with are displayed in Friends list. To view all friends, press the **Menu** key, then touch **All friends**. To return to displaying most popular friends screen, press the **Menu** key again, then touch **Most popular**.
- **To make a friend popular** To ensure a friend is always displayed in your Most popular list, Touch & hold the friend's name until the options menu pops up, then touch **Always show friend**. To remove a friend from Always show friend, Touch & hold the friend, and touch **Auto-show friend**.
- **To block a friend** To block a friend from exchanging messages and remove them from your friends list, Touch & hold the friend, then touch **Block friend**. All blocked friends can be viewed by pressing **Menu** key and touching **More/Blocked**. To unblock a friend, touch the name of this friend and touch **OK** when prompted.

4.3.5 Settings

A series of settings are available for your selection by pressing **Menu** key from Friends list screen, and touching **Settings**.

- **Automatically sign in** Select to sign in to your Google Talk account automatically every time you turn on your phone.
- **Mobile indicator** Select to display an indicator icon along with your name in other people's Friends list.
- **Automatic away status** Select to set status as Away when the screen is turned off.
- **Clear search history** Touch to clear previous chat searches history from showing up in the Search box.
- **IM notifications** Mark/Unmark the checkbox to activate/deactivate the notify in status bar when a new message arrives.
- **Select ringtone** Touch to set a notification ringtone.
- **Vibrate** Touch to activate vibration alert for this service.
- **Invitation notifications** Mark/Unmark the checkbox to activate/deactivate the notify in status bar when friend invitations are received.

5 Google Calendar & Alarm clock & Calculator

5.1 Google Calendar

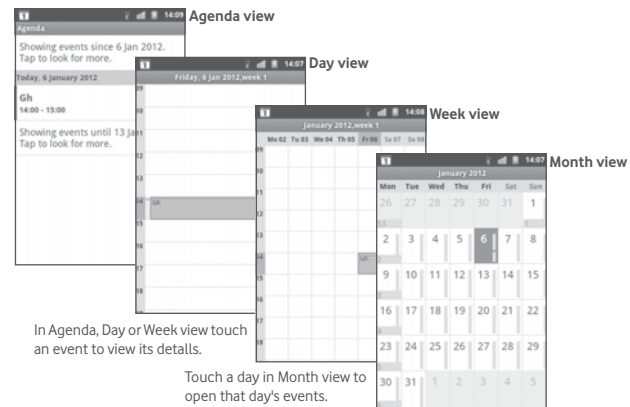
Use Google Calendar to keep track of important meetings, appointments, etc.

To access this function, touch the Applications tab from the Home screen, then touch **Calendar**.

5.1.1 Multimode view

You can display the Calendar in daily, weekly, monthly, or agenda view.

To change your Calendar view, press the **Menu** key, then touch **Day**, **Week**, **Month** or **Agenda**.



5.1.2 To create new events

You can add new events from any Calendar view.


- Press the **Menu** key from Calendar screen, and touch **More/New event** to access new event edit screen.
- Fill in all required information for this new event. If it is a whole-day event, you can select **All day**.
- Invite guests to the event. Enter the email addresses of the guests you want to invite with commas to separate. If the guests use Google Calendar, they will receive an invitation from Calendar and Email.
- When finished, touch **Done** from the end of the screen.

To quickly create an event from Day, Week or Month view screen, Touch & hold an empty spot or an event to open option menu, then touch **New event** to enter the event details screen of the time you have previously selected.

5.1.3 To delete or edit an event

To delete or edit an event, touch the event to enter details screen, press the **Menu** key, touch **Edit event**, or **Delete event**.

5.1.4 Event reminder

If a reminder is set for an event, the upcoming event icon  will appear on Status bar as a notification when the reminder time arrives.

Touch and drag down the status bar to open the notification panel, touch event name to view Calendar notification list.

Touch **Snooze all** to turn off all event reminders for 5 minutes.

Touch **Dismiss all** to delete all reminders from the list.

Press the **Back** key to keep the reminders pending in the status bar and the notification panel.

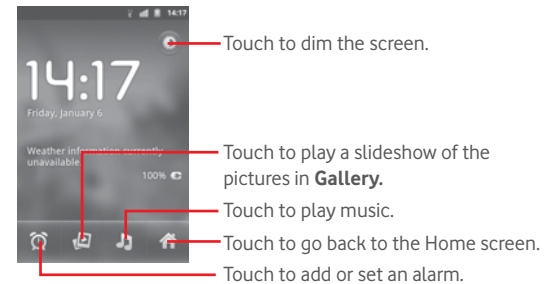
Important options by pressing **Menu** key from Calendar main screen:

More	New event	To add a new event
	My calendars	To show, hide or sync calendars
	Settings	To set a series of Calendar settings


5.2 Clock.....

Your mobile phone has a built-in clock.

To access this function, touch the Applications tab from the Home screen, then touch **Clock**.



5.2.1 To set an alarm

From **Clock** screen, touch  icon at the bottom of the screen to enter **Alarms** screen, touch **Add alarm** to add a new alarm, set the alarm time then touch **Set** to display the under options:

- **Turn alarm on** Touch to enable the alarm
- **Time** Touch to set time
- **Repeat** Touch to select days you want alarm to work
- **Ringtone** Touch to select a ringtone for the alarm
- **Vibrate** Select to activate vibration
- **Label** Touch to set a name for the alarm

When finished, touch **Done** to confirm.

Touch a currently existing alarm to enter alarm editing screen, touch **Delete** to delete the selected alarm.

5.2.2 To adjust alarm settings

Press the **Menu** key from **Alarms** screen, then touch **Settings**. The following options can now be adjusted:

- **Alarm in silent mode** Select to play alarm with sound or vibration even when the phone is in silent mode.
- **Alarm volume** Touch to set the volume of alarms.
- **Snooze duration** Touch to set temporary turn off time of an alarm.
- **Side button behavior** Touch to set side **Volume up/down** key and **Camera** key behaviors when alarm sounds: **None**, **Snooze** or **Dismiss**.

5.3 Calculator



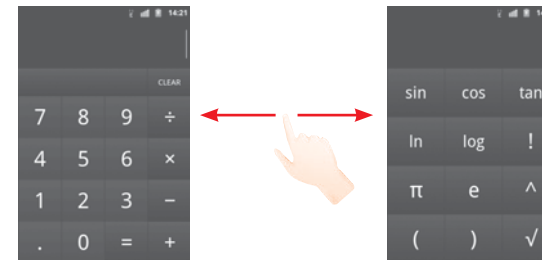
With Calculator, you can solve many mathematical problems.

To access this function, touch the Applications tab from the Home screen, then touch **Calculator**.

There are two panels available: Basic panel and Advanced panel.

To switch between panels, select one of the following two ways:

- Touch and drag the basic screen to the left to open the Advanced panel.
- Or press the **Menu** key from basic panel to open option menu and touch **Advanced panel**.



Enter a number and the arithmetic operation to be performed, enter the second number, then touch "=" to display the result. Touch **CLEAR** to delete digits one by one, Touch & hold **CLEAR** to delete all at one time.

6 Getting connected

To connect to the internet with this phone, you can use GPRS/EDGE/3G networks or Wi-Fi, whichever is most convenient.

6.1 Connecting to the Internet

6.1.1 GPRS/EDGE/3G

The first time you turn on your phone with SIM card inserted, it will automatically configure network service: GPRS, EDGE or 3G.

To check the network connection you are using, press the **Menu** key on the Home screen, then touch **Settings/Wireless & networks/Mobile networks/Access Point Names** or **Network operators**.

To create a new access point

A new GPRS/EDGE/3G network connection can be added to your phone with the following steps:

- Press the **Menu** key from the Home screen.
- Touch **Settings/Wireless & networks/Mobile networks/Access Point Names**.
- Then press the **Menu** key again and touch **New APN**.
- Enter the required APN information.
- When finished, press the **Menu** key and touch **Save**.

To activate/deactivate Data roaming

When roaming, you can decide to connect/disconnect to a data service.

- Press the **Menu** key from the Home screen.
- Touch **Settings/Wireless & networks/Mobile networks**.

- Mark/Unmark the **Data roaming** checkbox to activate or deactivate data roaming.
- When Data roaming is deactivated, you can still perform data exchange with a Wi-Fi connection (refer to "**6.1.2 Wi-Fi**").

To limit your data connection to 2G networks only

To save battery and extend battery life, you can set to activate 2G networks (GPRS or EDGE) only.

- Press the **Menu** key from the Home screen.
- Touch **Settings/Wireless & networks/Mobile networks**.
- Mark/Unmark the **Use only 2G networks** checkbox to activate/deactivate this function.

6.1.2 Wi-Fi

Using Wi-Fi, you can connect to the Internet when your phone is within range of a wireless network. Wi-Fi can be used on your phone even without a SIM card inserted.

To turn Wi-Fi on and connect to a wireless network

- Press the **Menu** key from the Home screen.
- Touch **Settings/Wireless & networks**.
- Mark/Unmark the **Wi-Fi** checkbox to turn Wi-Fi on or off.
- Touch **Wi-Fi settings**. The detailed information of detected Wi-Fi networks is displayed in the Wi-Fi networks section.
- Touch a Wi-Fi network to connect. If the network you selected is secured, you will be asked to enter a password or other credentials (you may need to ask the Wi-Fi network owner for details). When finished, touch **Connect**.

To activate notification when a new network is detected

When Wi-Fi is on and the network notification is activated, the Wi-Fi icon will appear on the status bar whenever the phone detects an available wireless network within range. The following steps activate the notification function:

- Press the **Menu** key from the Home screen.
- Touch **Settings/Wireless & networks/Wi-Fi settings**.
- Mark/Unmark the **Network notification** checkbox to activate/deactivate this function.

To add a Wi-Fi network

When Wi-Fi is on, you may add new Wi-Fi networks according to your preference.

- Press the **Menu** key from the Home screen.
- Touch **Settings/Wireless & networks/Wi-Fi settings/Add Wi-Fi network**.
- Enter the name of the network and any required network information.
- Touch **Save**.

When successfully connected, your phone will be connected automatically the next time you are within range of this network.

To forget a Wi-Fi network

The following steps prevent automatic connections to networks which you no longer wish to use.

- Turn on Wi-Fi, if it's not already on.
- In the Wi-Fi settings screen, touch & hold the name of the network.
- Touch **Forget network** in the dialog that opens.

To add a WPS network


WPS (Wi-Fi Protected Setup) is an easy way for users to access Wi-Fi network by entering PIN or using push button.

- Press the **Menu** key from the Home screen.
- Touch **Settings/Wireless&networks/Wi-Fi settings/Add WPS network**.
- Enter PIN number or use push button.
- Touch **Start** to get access to a WPS network.


6.2 Browser.....



The **Browser** lets you surf the web, just like on your computer.

To quickly get onto the web from the Home screen, simply touch the **Browser** icon . You'll also find the **Browser** in Applications.

To go to a web page

On Browser screen, touch the URL box at the top, enter the address of the web page, then touch .


To set homepage

- Press the **Menu** key from Browser screen to display option menu, touch **More/Settings/Set homepage**.
- Enter the URL of the website you want to set as your homepage.
- Finally touch **OK** to confirm.

6.2.1 Viewing web pages


When opening a website, you can navigate on web pages by sliding your finger on the screen in any direction to locate the information you want to view.

To zoom in/out of a web page

Zoom controls  will be activated when scrolling the screen using your finger. Touch the plus or minus on the side of the Zoom control to zoom in or out.

To quickly zoom into a section of a web page, double-tap on the section you want to view. To return to normal zoom level, double-tap again.

To find text on a web page

- Press the **Menu** key from web page screen, then touch **More/Find on page**.
- Enter the text or phrase you want to find.
- The first word with matching characters will be highlighted on the screen, and subsequent matches will be boxed.
- Touch the left or right arrow to switch to the previous or next matching items.
- When finished, you can touch  to close the search bar.

To copy text on a web page

You can copy text from a web page and paste it into emails or SMS/MMS messages.

- Press the **Menu** key from web page screen, then touch **More/Select text**.
- Place your finger at the start of the text you want to copy and then drag it to the end of the text.
- Selected text is copied and highlighted in color.
- Release your finger.

To paste the copied text into an email or SMS/MMS message, Touch & hold the enter box and then touch **Paste** on the options menu.

To open new window/switch between windows

Multiple windows can be opened at the same time for your convenience.

- Press the **Menu** key from web page screen, and touch **New window**.
- To view all currently open windows, press the **Menu** key then touch **Windows**, or pinch current web pages.
- Touch a window you want to view.

To close a window, touch  on the window you want to close.

Other options:

- **Refresh** To refresh the current page (press the **Menu** key on web page screen, then touch **Refresh**).
- **Forward** To forward the pages you have opened (press the **Menu** key on web page screen, then touch **More/Forward**).
- **Page info** To view more information about the current page (press the **Menu** key on web page screen, then touch **More/Page info**).
- **Share page** To share the current page with your friends via various ways, like Message, Email, Bluetooth, etc. (press the **Menu** key on web page screen, then touch **More/Share page**).

6.2.2 Manage links, history, downloads

To manage a link, phone number or address displayed on a web page

- **Link** Touch the link to open the web page.
Touch & hold the link to open options for further operation, like open in new window, save link, share link, copy link, etc.
- **Phone number** Touch to call the phone number.
- **Address** Touch to open Google Maps and locate the address

To view Browser history

- Press the **Menu** key from Browser screen.
- Touch **Bookmarks**.
- Touch **History** tab to view browser history.

To view your most frequently visited pages

- Press the **Menu** key from Browser screen.
- Touch **Bookmarks**.
- Touch **Most visited** tab to view your most frequently visited pages.

To download a web application/view your downloads

Before downloading a web application, you need to enable your phone to download web applications (press the **Menu** key from the Home screen, touch **Settings/Applications**, mark check box of **Unknown sources**, finally touch **OK** to confirm).


To download a file, Touch & hold the item you want to download, then touch **Save** on the menu that opens.

To cancel a download, press the **Menu** key and touch **More/Downloads**, then touch **Menu** key again and finally touch **Cancel all downloads**.

To view items you have downloaded, press the **Menu** key and touch **More/Downloads**. You can clear the downloaded item list by pressing **Menu** key and touching **Clear list**.

6.2.3 Manage bookmarks

To bookmark a web page

- Open the web page you want to bookmark.
- Touch the bookmark icon  at the top of the screen, or press the **Menu** key and touch **Bookmarks**.
- Touch **Add**.
- Enter the name and the location if needed and touch **OK** to confirm.

To open a bookmark

- On the **Bookmarks** tab, touch the bookmark you want to open.
- You can also touch & hold to display the options screen, then touch **Open** or **Open in new window**.

To edit a bookmark

- On the **Bookmarks** tab, touch & hold the bookmark you want to edit.
- Touch **Edit bookmark**.
- Enter your changes.
- When finished, touch **OK** to confirm.

Touch & hold a bookmark in the Bookmark tab to view more additional options:

- **Add shortcut to Home** To add a bookmark shortcut to the Home screen.
- **Share link** To share the bookmark.
- **Copy link URL** To copy the bookmark link.
- **Delete bookmark** To delete a bookmark.
- **Set as homepage** Set the select bookmark as Homepage.

6.2.4 Settings

A series of settings are available for your adjustment. To access Browser settings, press the **Menu** key from Browser screen, and touch **More/Settings**.

Page content settings

- **Text size** Touch to select the size of the text display: Tiny, Small, Normal, Large, or Huge.
- **Default zoom** Touch to select the magnification level by default.
- **Open pages in overview** Mark the checkbox to open web pages zoomed out, in an overview.
- **Text encoding** Touch to select the character encoding standard.
- **Block pop-up windows** Mark the checkbox to prevent pop-up windows.
- **Load images** Mark to display images on web pages.
- **Auto-fit pages** Mark to format web pages to fit the screen.
- **Landscape-only display** Mark to display pages only in landscape screen orientation.
- **Enable JavaScript** Mark to enable JavaScript.
- **Enable plug-ins** Mark to enable plug-ins.
- **Open in background** Mark to open new windows behind the current one.
- **Set homepage** Touch to set homepage.

Privacy settings

- **Clear cache** Touch to clear locally cached content and databases.
- **Clear history** Touch to clear the browser history.
- **Accept cookies** Mark to allow sites to save and read cookie data.
- **Clear all cookie data** Touch to clear all browser cookies.
- **Remember form data** Mark to remember data in forms for later use.
- **Clear form data** Touch to clear all the saved form data.
- **Enable location** Mark to allow sites to request access to your location.
- **Clear location access** Touch to clear location access for all websites.

Security settings

- **Remember passwords** Mark to save usernames and passwords for websites.
- **Clear passwords** Touch to clear all saved passwords.
- **Show security warnings** Mark to show warning if there is a problem with a site's security.

Advanced settings

- **Set search engine** Touch to select a search engine.
- **Website settings** Touch to view advanced settings for individual websites.
- **Reset to default** Touch to clear all browser data and to reset all settings to default.

6.3 Connecting to Bluetooth devices

Bluetooth is a short-range wireless communication technology that you can use to exchange data, or connect to other Bluetooth devices for various uses.

To access this feature, press the **Menu** key from the Home screen, touch **Settings/Wireless & networks/Bluetooth** or **Bluetooth settings**.

To turn on Bluetooth

- Press the **Menu** key from the Home screen,
- Touch **Settings/Wireless & networks/Bluetooth** or **Bluetooth settings**.
- Mark/Unmark the **Bluetooth** checkbox to activate/deactivate this function.

To change device name

To make your phone more recognizable, you can change your phone name which is visible to others.

- Press the **Menu** key from the Home screen,
- Touch **Settings/Wireless & networks/Bluetooth settings/Device name**.
- Enter a name, and touch **OK**.

To make device visible

- Press the **Menu** key from the Home screen,
- Touch **Settings/Wireless & networks/Bluetooth settings**.
- Mark/Unmark the **Discoverable** checkbox to activate/deactivate this function.

To pair/connect your phone with a Bluetooth device

To exchange data with another device, you need to turn Bluetooth on and pair your phone with the Bluetooth device with which you want to exchange data.

- Press the **Menu** key from the Home screen.
- Touch **Settings/Wireless & networks/Bluetooth settings**.
- Touch **Scan for devices**.
- Select a Bluetooth device you want to be paired with in the list.
- Enter a passcode (0000 or 1234).
- If the pairing is successful, your phone connects to the device.

To disconnect/unpair from a Bluetooth device

- Touch & hold the device in the Bluetooth settings screen.
- Touch **Unpair** or **Disconnect & Unpair** in the menu that opens.

6.4 Connecting to a computer via USB

With the USB cable, you can transfer media files and other files between your phone's microSD card and the computer.

To connect/disconnect your phone to/from the computer

To connect your phone to the computer:

- Use the USB cable that came with your phone to connect the phone to a USB port on your computer. You will receive a notification that the USB is connected.
- Open the Notification panel and touch **USB connected**.
- Touch **Mount USB storage** in the dialog that opens to confirm that you want to transfer files.

To disconnect:

- Unmount the microSD card on your computer.
- Open the Notification panel and touch **Turn off USB storage**.
- Touch **Unmount USB storage** in the dialog that opens.

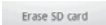
To safely remove the microSD card from your phone

The microSD card can be removed from your phone any time the phone is powered off. To remove the microSD card while the phone is on, you must unmount the storage card from the phone first, to prevent corrupting or damaging the storage card.

- Press the **Menu** key from the Home screen,
- Touch **Settings/SD card & phone storage**.
- Touch **Unmount SD card**.

You can now safely remove the microSD card from the phone.

To format a microSD card

- Press the **Menu** key from the Home screen,
- Touch **Settings/Storage**.
- Touch **Erase SD card**. On the screen a popup warns you that formatting the microSD card will erase its contents, touch  .

6.5 Sharing your phone's mobile data connection

You can share your phone's mobile data connection with a single computer via a USB cable (USB tethering) or with up to eight devices at once by turning your phone into a portable Wi-Fi hotspot.



The functions below may incur additional network charges from your network operator. Extra fees may also be charged in roaming areas.

To share your phone's data connection via USB

Use the USB cable that along with your phone to connect the phone to a USB port on your computer.

- Press the **Menu** key from the Home screen.
- Touch **Settings/Wireless & networks/Tethering & portable hotspot**.
- Mark/unmark the check box of **USB tethering** to activate/deactivate this function.

To share your phone's data connection as a portable Wi-Fi hotspot

- Press the **Menu** key from the Home screen.
- Touch **Settings/Wireless & networks/Tethering & portable hotspot**.
- Mark/unmark the check box of **Portable Wi-Fi hotspot** to activate/deactivate this function.

To rename or secure your portable hotspot

When Portable Wi-Fi hotspot is activated, you could change the name of your phone's Wi-Fi network (SSID) and secure its Wi-Fi network.

- Press the **Menu** key from the Home screen.
- Touch **Settings/Wireless & networks/Tethering & portable hotspot/Portable Wi-Fi hotspot settings**.
- Touch **Configure Wi-Fi hotspot** to change the network SSID or set your network security.
- Touch **Save**.

6.6 Connecting to virtual private networks

Virtual private networks (VPNs) allow you to connect to the resources inside a secured local network from outside that network. VPNs are commonly deployed by corporations, schools, and other institutions so that their users can access local network resources when not inside that network, or when connected to a wireless network.

To add a VPN

- Press the **Menu** key from the Home screen,
- Touch **Settings/Wireless & networks/VPN settings/Add VPN**.
- Touch the type of VPN to add.
- In the screen that opens, follow the instructions from your network administrator to configure each component of the VPN settings.
- Press the **Menu** key and touch **Save**.

The VPN is added to the list on the VPN settings screen.

To connect/disconnect to a VPN

To connect to a VPN:

- Press the **Menu** key from the Home screen,
- Touch **Settings/Wireless & networks/VPN settings**.
- VPNs you have added are listed; touch the VPN you want to connect with.
- In the dialog that opens, enter any requested credentials and touch **Connect**.

To disconnect:

- Open the Notification panel and touch the resulting notification for the VPN connection.

To edit/delete a VPN

To edit a VPN:

- Press the **Menu** key from the Home screen,
- Touch **Settings/Wireless & networks/VPN settings**.
- VPNs you have added are listed; touch & hold the VPN you want to edit.
- Touch **Edit network**.
- After finished, press the **Menu** key and touch **Save**.

To delete:

- Touch & hold the VPN you want to delete, in the dialog that opens, touch **Delete network**.
- Touch **OK** to confirm.

7 Android Play Shop ⁽¹⁾



Android Play Shop is an online software store, where you can download and install applications and games to your Android Powered Phone.

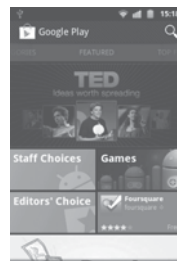
To open Android Play Shop:

- Touch the Applications tab from the Home screen, and then touch **Play Shop**.
- For the first time you access Android Play Shop, a screen with terms of service pops up for your attention, touch **Accept** to continue.

Press the **Menu** key, then touch **Help** to enter Android Play Shop help page for more information on this function.

7.1 Locate the item you want to download and install

Android Play Shop home page provides several ways to find applications. It showcases applications and games in categorized listings, and has a link to all your downloads.




⁽¹⁾ Depending on your country and operator.

Touch **Apps** or **Games** on Android Play Shop screen to browse its contents, and then select subcategory. Within each subcategory you can select to view items sorted by **Top paid**, **Top free**, or **Just in**.



Touch to search in Android market.

To return to Android Play Shop Home screen, do one of the followings:

- Touch the Play Shop icon  on the top left of the screen.
- Press the **Menu** key to display options list, then touch **Home**.


7.2 Download and install

To download & install:

- Navigate to the item you want to download, and select to enter the details screen from which you can read its overall rating or comments, view developer's information, etc.
- Press the **Menu** key and touch **Security** to preview the functions and data the application can access on your phone if you install it.
- Touch **Install**.



Be especially cautious with applications that have access to many functions or to a significant amount of your data. Once you touch **OK** to continue, you are responsible for the results of using this item on your phone.

- To check the progress of the download, open the Notification panel. To stop the downloading of the item, touch the progress bar and **Cancel** on the screen that opens.
- After download and installation have finished, you will see a notification icon  on the status bar.

To open the application you have downloaded:

- On Android Play Shop screen, press the **Menu** key and touch **My apps**.
- Touch the installed application in the list, then touch **Open**.

To buy an application

On Android Play Shop, some applications are labeled as free, while some of them are to be paid for before downloading and installing.

- Touch the application you want to buy.
- Touch **Buy** on the bottom of the screen.
- When making your first purchase, you are prompted to log in to Google Checkout payment and billing service.
- If your Google Checkout account has multiple credit card accounts, select one to proceed.
- Select the Terms of service link and read the document. When finished, press the **Back** key.
- Mark the check box if you agree with the terms of service.
- Touch **Buy now** at the bottom of the screen.

When finished, Android downloads the application.

To request a refund

If you are not satisfied with the application, you can ask for a refund within 24 hours of the purchase. Your credit card will not be charged and the application will be removed. If you change your mind, you can install the application again, but you will not be able to request a refund.

- Press the **Menu** key and touch **My apps** in Android Play Shop Home.
- Touch the application that you want to uninstall.
- Touch **OK** in the **Uninstall & refund** dialog box. If the dialog box does not appear, your trial period has expired.
- In the survey form, select the answer that best matches your reason, and touch **OK**.

7.3 Manage your downloads

After you downloaded and installed an application, the following further operations are available for your selection.

View

On Android Play Shop screen, press the **Menu** key and touch **My apps**.

Uninstall

On Android Play Shop screen, press the **Menu** key and touch **My apps**. Touch the application you want to uninstall to enter the details screen, touch **Uninstall**, and finally touch **OK** to confirm.

Refund

On Android Play Shop screen, press the **Menu** key and touch **My apps**. Touch the application you want to uninstall for a refund, touch **Uninstall & refund**, and finally touch **OK** to confirm.

Update notification

On Android Play Shop screen, press the **Menu** key and touch **My apps**. Press the **Menu** key and touch **Notification**, select whether or not to be notified of updates, and finally touch **OK** to confirm.

Rate

Open the details screen for an application, touch the stars ★★★★★ under **My review** to award and touch **OK** to confirm.

Flag

You can report an inappropriate application to Android Play Shop by flagging it. Open the details screen for the application, scroll to the bottom and touch **Flag as inappropriate**, enter the reason and finally touch **Submit**.

8 Multimedia applications

8.1 Camera/Camcorder.....




Your mobile phone is fitted with a Camera and a Camcorder for taking photos and shooting videos.

Before using the Camera or Camcorder, please ensure that a microSD card where all pictures and videos are stored is correctly installed. Also, be sure to open the protective lens cover before use to avoid it affecting your picture quality.


To access this function, touch the Applications tab from the Home screen and then touch **Camera** or **Camcorder**.





To take a picture

The screen acts as the viewfinder. First position the object or landscape in the viewfinder, and touch  icon to take the picture, which will be automatically saved.







Zoom in/zoom out

Touch  icon to open the Zoom control and slide the scroll bar to zoom in or out gradually. Touch the screen twice to zoom all the way in or out.

To shoot a video

Switch Camera mode to Video mode or access Camcorder directly from the applications list. First position the object or landscape in the viewfinder, and touch  icon to start recording. Touch  icon to stop shooting. The video will be automatically saved.

Further operations when viewing a picture or a video you have taken:

-  Touch to set the picture as a contact icon, wallpaper, etc.
-  Touch to share the picture or video you have just taken or shot by Bluetooth, MMS, gmail, etc.
-  Touch to delete the picture or video you have just taken or shot.
-  Touch to enter **Slideshow**.
-  Touch to return to frame mode after viewing a picture or shooting a video.
-  Touch to play the video you have just shot.

Press the **Menu** key or Touch & hold the picture to display more operations such as **Rotate left**, **Rotate right**, **Crop** and **Details** etc. (refer to "Working with pictures")

8.1.1 Settings in framing mode

Before taking a photo/shooting a video you can adjust a number of settings in framing mode.

Camera settings

- **Settings** Touch to enter a scrolling list of settings: Exposure, Picture size, Picture quality, etc.
- **Store location** Touch to turn on/off stored location information of pictures by using the phone's GPS.
- **White balance** Touch to adjust color in different lights: Auto, Incandescent, Daylight, Fluorescent or Cloudy.
- **Flash mode** Touch to turn on/off flash mode or set as auto.
- **Zoom** Touch to open the Zoom control and slide the scroll bar to zoom in or out gradually.

Video/Camcorder settings:

- **Settings** Touch to enter a scrolling list of settings: Colour effect, Remaining time, etc.
- **Store location** Touch to turn on/off stored location information of pictures by using the phone's GPS.
- **White balance** Touch to adjust color in different lights: Auto, Incandescent, Daylight, Fluorescent or Cloudy.
- **Flash mode** Touch to turn on/off flash mode.
- **Video quality** Touch to set video quality.

Advanced settings (Press the **Menu** key):

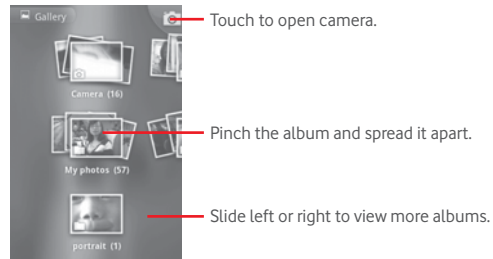
- **Preview photo/video** Touch to preview your photo or video.
- **Switch to camera/video** Touch to switch between camera and video.

8.2 Gallery.....

Gallery acts as a media player for you to view photos and playback videos. In addition, a set of further operations to pictures and videos are available for your choice (refer to "8.1.1 Settings in framing mode").

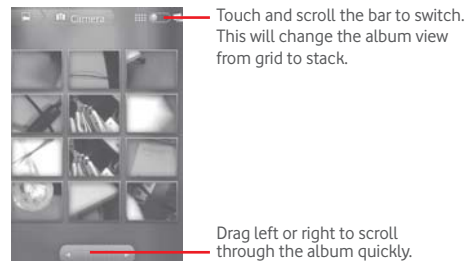
To access this function, touch the Applications tab from the Home screen, then touch **Gallery**.

From this menu, you can access Camera or Camcorder for taking a picture or video.



To view a picture/play a video

Pictures and videos are displayed by albums in **Gallery**.



- Touch an album, pinch it with two fingers and then all pictures or videos will spread the screen.
- Touch the picture/video directly to view or play it.
- Slide left/right to view previous or next pictures/videos.

Working with pictures

You can work with pictures by rotating or cropping them, sharing them with friends, setting them as contact ID or wallpaper, etc.

Locate the picture you want to work on, press the **Menu** key from full-screen picture view.



Touch **Menu** key, four options will appear below.

To crop a picture, touch a picture to view controls and touch **Menu/Crop**. The cropping square appears in the middle of the picture. Select the portion to crop, touch and Save.

Batch operation

Gallery provides a multi-select function, so that you can work with pictures/videos in batches.

Open the main Gallery window or an album, press the **Menu** twice or Touch & hold one album/picture, and mark the checkbox before the file you want to work on, then perform further actions, like delete, share, etc.

8.3 YouTube

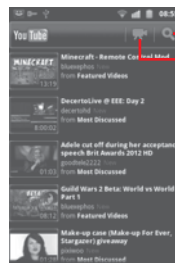
YouTube is an online video-sharing service where the user can download, share and view videos. It supports a streaming function that allows you to start watching videos almost as soon as they begin downloading from the Internet.

To access this function, touch the Applications tab from the Home screen, then touch **YouTube**.



As an online video service, your phone must have a network connection to access YouTube.

All videos in YouTube are grouped into several categories, like Most popular, Most viewed, Top rated, etc.



Touch to search for a video.

Touch to shoot a video.

By pressing **Menu** key from YouTube screen, you can rate, share, label as favourite, etc. For details about these features, please visit the YouTube website: www.YouTube.com

8.3.1 Watch videos

Touch a video to play it.

Touch video playing screen to display playback controls with which you can pause, skip forward or backward, or drag the progress bar to the point you want to watch.

To exit video playing screen, press the **Back** key to return to the video list.

8.4 Music

Using this menu, you can play music files stored on the microSD card in your phone. Music files can be downloaded from computer to microSD card using an USB cable.

To access this function, touch the Applications tab from the Home screen, then touch **Music**.

You will find four libraries in which all songs are classified: **Artists**, **Albums**, **Songs**, and **Playlists**. Touch a category and view the list.

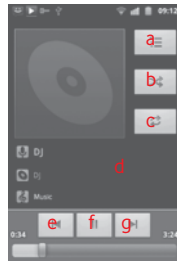
With the help of **Search** key, you can easily search for songs you want to play in libraries.

To delete a song, press the **Menu** key from playback screen and then touch **Delete** to remove it from the microSD card.

You can also set a song as a ringtone, press the **Menu** key from playback screen to display option menu, then touch **Use as ringtone**.

8.4.1 Playing music

From any of the four library screens, touch a song to play it back.



- a Touch to open the current playlist.
- b Touch to play the current playlist in shuffle mode (tracks are played in random order).
- c Touch to toggle repeat mode: Don't repeat, Repeat the playlist, or Repeat the current track.
- d Touch & hold to search for more information.
- e Touch to skip to the previous track in the album, playlist, or shuffle.
- f Touch to pause/resume playback.
- g Touch to skip to the next track in the album, playlist, or shuffle.

Adjust volume

To adjust the volume, you can press the **Volume up** and **Volume down** key.

8.4.2 Using Party shuffle

All songs will be displayed in order by default. When Party shuffle is activated, some songs will be selected and played at random. Press the **Menu** key, then touch **Party shuffle** to turn on this function. To turn it off, press the **Menu** key again, then touch **Party shuffle off**.

8.4.3 Working with playlists

Playlists allow you to conveniently organize all the songs stored in the card.

You can create a new playlist, add a song to the list, rearrange the order of the list, and delete or rename a playlist.

To create a playlist

Press the **Menu** key from playback screen to display the option menu, touch **Add to playlist**, then touch **New**, enter the name and finally touch **Save**.

To change the order of songs in a playlist

Enter a playlist, drag a song up or down to change the order within the playlist.

To delete a song or a playlist

Locate the song or playlist you want to delete, Touch & hold or press the **Menu** key from playback screen to display option menu, then touch **Delete**.

To rename a playlist

Locate the playlist you want to rename, Touch & hold to display option menu, then touch **Rename**. When finished, touch **Save**.



8.5 Sound Recorder

To access this function, touch the Applications tab from the Home screen, then touch **Sound Recorder**.

Sound Recorder allows you to record voice/sound for seconds/hours.

8.6 Videos.....

To access this function, touch Application tab from the Home screen, then touch **Videos**.

Videos is a small built-in video player that lists all your videos.

Touch an item from the list to play. While playing, use Pause, Forward and Back functional icons as required, touch a point on the timeline to jump to and play from.

8.7 FM Radio.....

Your phone is equipped with a radio ⁽¹⁾ with RDS ⁽²⁾ functionality. You can use the application as a traditional radio with saved channels or with parallel visual information related to the radio program on the display if you tune to stations that offer Visual Radio service.

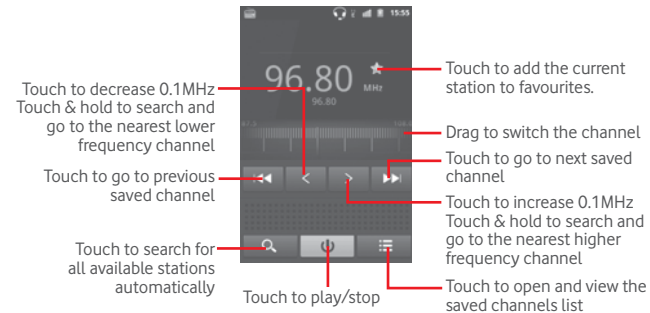
To access this function, touch the Applications tab from the Home screen, then touch **FM Radio**.



To use it, you must plug in your headset, which works as an antenna connected with your phone.

⁽¹⁾ The quality of the radio depends on the coverage of the radio station in that particular area.

⁽²⁾ This function depends on the country you are based in.



Available options:

- **Save channel** Save the current tuned station to the channels list.
- **Edit name** Edit the channel name.
- **Audio mode** Listen to the radio using loudspeaker or headset.
- **Exit** Turn off the radio.
- **Enter frequency** Enter the frequency manually.
- **Settings** Customise radio settings according to preference.
- **Delete** Delete the channel

9 Google Maps



9.1 Get My Location

9.1.1 Choose a data source to decide My Location

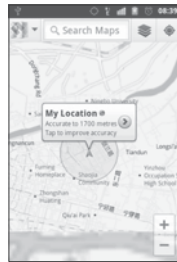
Press the **Menu** key from the Home screen, touch **Settings/Location & security**.

- Mark the check box of **Use wireless networks** to set Wi-Fi and/or mobile networks as My Location data source.
- Or mark the check box of **Use GPS satellites** to set GPS as My Location data source.


9.1.2 Open Google Maps and view My Location

Touch the Applications tab from the Home screen, then touch **Maps**.

The map will then center on a blue dot with a blue circle around. Your actual position is within the blue circle.



To move the map, drag the map with your finger.

To zoom in and out of a map, touch the plus or minus side of the zoom control , or you can also zoom in/out by double-tapping a location on screen.

To clear the map history, press the **Menu** key and touch **Clear Map**.

9.2 Search for a location

While viewing a map, press the **Menu** key and touch **Search**, or you can directly press the **Search** key on keyboard to activate search function.

In the search box, enter an address, a city or a local business.

Touch the search icon and in a while your search results will appear on the map highlighted by markers with letter labels.



You can touch a marker to open a balloon that contains a label. Touch the balloon to open a screen with more handy information about the location.

9.3 Star a location

Just like bookmarking a web address on the Internet, you can star any position on the map for later use.

9.3.1 How to star (or unstar) a location

- Touch & hold a location on a map
- Touch the address rectangle that opens
- Touch the gray star at the top of the screen to star the location. (Or touch a gold star to unstar that location.)



9.3.2 View a list of starred items

Press the **Menu** key from maps screen and touch **More/My Places**.

The list of your starred items and their addresses opens.

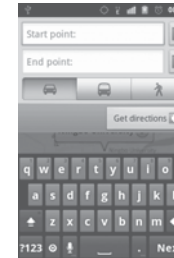
Touch a location in the list to view it .


Press the **Menu** key and touch **Refresh** to update the list.

9.4 Get driving, public transport or walking directions

9.4.1 Get suggested routes for your trip

Press the **Menu** key from maps screen and touch **Directions**.




- Touch enter bar or  to edit your start point by one of the following methods: entering an address, using My Location, selecting a start point on a map, selecting a starred item, selecting an address from your contacts or using search history.
- Do likewise for your end point.
- To reverse directions, press the **Menu** key and touch **Reverse Start & End**.
- Then select a transport mode: driving by car, using public transport, or walking directions.
- Finally touch **Get directions**.
- A couple of suggested routes will appear in a list. Touch any routes to view their respective detailed directions.

To get reverse directions for a route you've already made, simply open that route's directions window and select **Reverse**. No need to enter your start point and end point again.

9.4.2 Preview suggested routes and decide on a route more preferable or feasible to you

You can preview each turn in your route in Navigation, Satellite, and other views.

- Touch a left or right arrow to preview the next or previous leg of your route.
- You can view turn-by-turn directions in a list by touching , press the **Back** key to return to previous view.

When selecting a more preferable or feasible route, distance and time will be the two most important factors for your evaluation. Distance and estimated time will be displayed at the top of the directions screen.

9.4.3 Search for locations along your route

Please refer to "9.2 Search for a location" for detailed information.

9.4.4 View route progress and calculate estimated arrival time

To view your route progress, pinpoint My Location, zoom out until the whole route goes into one screen, with both finished and unfinished miles in sight.

Start another Directions screen based on your current and intended destination locations. Estimated arrival time will be shown in the results. Please note that the estimated arrival time is not available for the public transport mode.

9.4.5 View traffic conditions on your route

At the lower-left corner of navigation view, a traffic light indicates the overall traffic conditions on your route, next to the estimated time of arrival at your destination. You can also view the traffic conditions on each segment of your route.

Touch the traffic light at the lower left of the Navigation View. Your route opens in Traffic View, with color coding to indicate the traffic along the way. Touch the navigation icon to return to your current location in Navigation View.

9.4.6 Get an alternative route to your destination


If traffic is slow on your current route, or if you just want to try a different route, you can request an alternative route from Google Maps with turn-by-turn Navigation service.

Press the **Menu** key and touch **Route information**. Touch the alternative route icon. An alternative route is drawn on the map.

9.5 Arrangement of layers

Layers allow you to view locations and additional information overlaid on the map. You can add multiple layers or remove only certain layers so you control exactly what information you want visible on the map at one time.

9.5.1 To view multiple layers

- Touch  from maps screen.
- All available layers are listed (like Traffic, Satellite, Latitude, etc), select one to view.

9.5.2 To clear the map

After you get directions or search on a map, you can clear the markers/layers that have been drawn: press the **Menu** key on maps screen and touch **Clear Map**, or you can also touch **Clear Map** on Layers screen.

9.6 Join Latitude to see your friends' locations and share yours with them

With Google Latitude, you can:

- see your friends' locations on a map or in a list.
- quickly contact your friends with a text message, instant message, or phone call.
- you can share, set, hide your location, or sign out of Google Latitude.
- control who sees your location, and at what level of detail.
- add Latitude widget to home screen to see nearby friends at a glance.

9.6.1 To join Latitude

- Press the **Menu** key from maps screen.
- Touch **More/Join Latitude**.

When you joined Latitude, the menu item changes to **Latitude**.

To open Latitude, press the **Menu** key from maps screen, then touch **Latitude**.

9.6.2 How to invite friends to share their locations

- Press the **Menu** key from Latitude screen, touch **Add friends**.
- Touch **Select from Contacts** or **Add via email address**.
- After selecting your chosen contacts touch **Add friends** at the bottom of the screen.

When finished, an invitation will be sent to the friends you have invited.

To respond to an invitation, you can select one of the followings:

- **Accept and share back** You and your friend can share locations with each other.
- **Accept, but hide my location** You can view your friend's location, but they can not view yours.
- **Don't accept** No locations can be shared between you and your friend.

9.6.3 To view your friends' location

You can view your friends' locations on a map or in a list.

- **Map view** When Google Maps is opened, your friends' locations will display with their photo icons for identification.
- **List view** Press the **Menu** key from maps screen, then touch **Latitude**. Your friends are displayed in a list.

9.6.4 To connect with your friends

Select a contact, you can communicate with your friend and set privacy options.

- **Show on map** Locate the friend's position on the map.
- **Chat using Google Talk** Send instant messages to the friend.
- **Send email** Send emails to the friend.
- **Directions** Get directions to this friend's location.
- **Hide from this friend** Set to hide your location from this friend.
- **Share only city level location** Set to share locations only at city level, instead of street level, etc.
- **Remove** Remove this friend from your list and stop sharing information with him or her.

9.6.5 To control what you share

You can control the information you want to share with your friends.

Press the **Menu** key from maps screen, touch **Latitude**, touch your own name and then touch **Edit privacy settings**.

The following options are available to choose from:

- **Location reporting/ Detect your location** Enable Latitude to detect your location automatically when you move around.
- **Location reporting/ Set your location** Select a location on the map manually.
- **Location reporting/ Do not update your location** Your location is not updated and your friends cannot see it.
- **Enable location history** Mark to hide your location history.
- **Manage your friends** Touch to add or remove friends who can see your location.
- **Sign out of Latitude** Deactivate Latitude and stop sharing.

10 Others

10.1 FileManager



To access FileManager, touch the Applications tab from the Home screen, then touch **FileManager**.

FileManager works with your SD card instead of your phone memory. To use it, you have to install your SD card first. See "**Installing and removing the microSD card**".

FileManager displays all data stored on the microSD card, including applications, media files downloaded from Android Play Shop, YouTube or other locations; videos, pictures or audios you have captured; other data transferred via Bluetooth, USB cable, etc.

When you download an application from PC to microSD card, you can locate the application on FileManager, then touch it to install it in your phone.

FileManager allows you to perform and be really efficient with the following common operations: create (sub) folder, open folder/file, view, rename, move, copy, delete, play, share, etc.

10.2 SyncML Client



To access this function, touch the Applications tab from the Home screen, then touch **SyncML Client**.

You have to configure your own sync-hosting server account to locate the synchronization source at the other side. Also you might be asked to decide on the following options:

- **Who to sync:** account name, username and password are needed to authenticate your identity.

- **How to sync:** available synchronization types are two-way synchronization, backup to server, restore from server, export to server, and import from server.
- **What to sync:** supported synchronization applications are Contacts and Calendar, each with an independent secure database that doesn't allow anonymous access.
- **When to sync:** synchronize when roaming, synchronize when data is modified, synchronize when phone is turned on or synchronize at a regular basis (daily, weekly or monthly).

10.3 Torch

To access this function, touch the Applications tab from the Home screen, then touch **Torch**.

Torch is an application which can provide power light for your convenience and you can select to turn on/off or adjust the brightness as needed.

10.4 Other applications ⁽¹⁾

The previous applications in this section are preinstalled on your phone. To read a brief introduction of the preinstalled 3rd party applications, please refer to the leaflet provided with the phone. You can also download thousands of 3rd party applications by going to Android Play Shop on your phone.

⁽¹⁾ Application availability is dependent on the country you're based in.

11 Settings

To access this function, touch the Applications tab from the Home screen, and touch **Settings** on main menu, or you can also press the **Menu** key from the Home screen and touch **Settings**.

11.1 Wireless & networks

11.1.1 Airplane mode

Mark the check box of **Airplane mode** to simultaneously disable all wireless connections including Wi-Fi, Bluetooth and more.

11.1.2 Wi-Fi

Using Wi-Fi you can now surf the Internet without using your SIM card whenever you are in range of a wireless network. The only thing you have to do is to enter the **Wi-Fi settings** screen and configure an access point to connect your phone to the wireless network.

For detailed instructions on using Wi-Fi, please refer to "**6.1.2 Wi-Fi**".

11.1.3 Bluetooth

Bluetooth allows your phone to exchange data (videos, images, music, etc.) in a small range with another Bluetooth supported device (phone, computer, printer, headset, car kit, etc.).

For more information on Bluetooth, please refer to "**6.3 Connecting to Bluetooth devices**".

11.1.4 Tethering & portable hotspot

This function allows you to share your phone's mobile data connection via USB or as a portable Wi-Fi access point (Please refer to "6.5 Sharing your phone's mobile data connection").

11.1.5 VPN settings

A mobile virtual private network (mobile VPN or mVPN) provides mobile devices with access to network resources and software applications on their home network, when they connect via other wireless or wired networks. Mobile VPNs are used in environments where workers need to keep application sessions open at all times, throughout the working day, as the user connects via various wireless networks, encounters gaps in coverage, or suspend-and-resumes their devices to preserve battery life. A conventional VPN cannot survive such events because the network tunnel is disrupted, causing applications to disconnect, time out, fail, or even the computing device itself to crash.

For more information of VPN, please refer to "6.6 Connecting to virtual private networks".

11.1.6 Mobile networks

Data enabled

If you do not need to transmit data on all mobile networks, unmark the check box of **Data enabled** to avoid incurring significant charges for data use on local carrier mobile networks, particularly if you do not have a mobile data agreement.

Data roaming

If you don't need to transmit data on other carriers' mobile networks, unmark the check box of **Data roaming** to avoid incurring significant roaming charges.

Network Mode

Touch to select network mode.

Access Point Names

You can select your preferred network with this menu.

Use only 2G networks

You can select to use only 2G networks.

Network operators

You can select a network operator.

Cell broadcast/Cell broadcast settings

Enable receipt of CB messages by marking the check box of Cell broadcast.

You can access a series of adjustable CB settings by touching **Cell broadcast settings**.

11.2 Call settings

Use Call settings to configure normal phone call settings and other special features offered by your carrier. You can also use Call settings to configure the phone so that it can place outgoing calls only to a fixed set of phone numbers.

11.2.1 Fixed Dialling Numbers

Fixed Dialling Number (FDN) is a service mode of SIM, where outgoing calls are restricted to a set of phone numbers. These numbers are added to the FDN list. The most common practical application of FDN is for parents to restrict the phone numbers to which their children can dial.

For security reasons, you'll be prompted to enable FDN by entering SIM PIN2 which is usually acquired from your service provider or SIM maker.

11.2.2 Voicemail

Voicemail service

Opens a dialog where you can select your carrier's voicemail service or another service.

Voicemail settings

If you are using your carrier's voicemail service, this opens a dialog where you can enter the phone number to use for listening to and managing your voicemail. You can enter a comma (,) to insert a pause into the number—for example, to add a password after the phone number.

11.2.3 Other call settings

Call forwarding

Depending on your subscription. Forward the incoming calls to a different number.

Additional settings

- **Caller ID:** Touch to set whether display the caller ID in outgoing calls.
- **Call waiting:** Touch to turn on/off call waiting. When turn on, during a call, there is a notification of incoming calls.

11.3 Sound

Use the Sound settings to configure many aspects of call and notification ringtones, music, and other audio settings.

- **Silent mode** Mark the check box to silence all sounds except media & alarms.
- **Alert override** Mark the check box to enable maximum volume and vibrate when device is in a pocket or bag.
- **Phone vibrate** Touch to access phone vibrate options.
- **Volume** Touch to set volume for Incoming call, Media and Alarm.
- **Phone ringtone** Touch to set your default incoming call ringtone.
- **Notification ringtone** Touch to set your default notification ringtone.
- **Audible touch tones** Mark the check box to enable playing tones when using dial pad.
- **Audible selection** Mark the check box to enable playing sounds when making screen selection.
- **Screen lock sounds** Mark the check box to enable playing sounds when locking and unlocking the screen.
- **Haptic feedback** Mark the check box to activate vibration when pressing soft keys and on certain UI interactions.

11.4 Display

- **Brightness** Touch to adjust the brightness of the screen or select Automatic brightness.
- **Auto-rotate screen** Touch to select whether rotate screen automatically.
- **Animation** Touch to select whether to show some, all or no animations.
- **Screen timeout** Touch to set screen timeout.

11.5 Location & security

Use the Location & Security settings to set your preferences for using and sharing your location when you search for information and use location-aware applications, such as Google Maps. You can also configure settings that help secure your phone and its data.

11.5.1 My Location

Use wireless networks

Mark the check box to use information from Wi-Fi and mobile networks to determine your approximate location, for use in Google Maps, when you search, and so on. When you select this option, you're asked whether you consent to share your location anonymously with Google's location service.

Use GPS satellites

Check to use your phone's global positioning system (GPS) satellite receiver to pinpoint your location within an accuracy as close as several meters ("street level"). The process of accessing the GPS satellite and setting your phone's precise location for the first time will require up to 5 minutes. You will need to stand in a place with a clear view of the sky and avoid moving. After this, GPS will only need 20-40 seconds to identify your precise location.

AGPS Setting

Touch to set the AGPS server address and the port.

11.5.2 Screen unlock pattern/Set up screen lock

- **None** Touch to disable screen unlock security.
- **Pattern** Touch to draw pattern to unlock screen.
- **PIN** Touch to enter a numeric PIN to unlock screen.
- **Password** Touch to enter a password to unlock screen.

11.5.3 SIM card lock/Set up SIM card lock

Open a screen where you can configure the PIN required to use the phone, and where you can change the SIM PIN.

11.5.4 Passwords/Visible passwords

Mark the check box to show passwords as you type.

11.5.5 Device administration/Select device administrators

Touch to add or remove the device administrators.

11.5.6 Credential storage

Use secure credentials

Mark the check box to allow applications to access your phone's encrypted store of secure certificates, related passwords and other credentials. Credential storage is used to establish some kinds of VPN and Wi-Fi connections. If you have not set a password for the credential storage, this setting is dimmed.

Install from SD card

Touch to install encrypted certificates from the microSD card.

Set password

Touch to set or change a password for the credential storage (at least 8 characters).

Clear storage

Touch to clear credential storage of all contents and reset its password.

11.6 Applications

You use the Applications settings to view details about the applications installed on your phone, to manage their data and force them to stop, and to set whether you want to permit installation of applications that you obtain from web sites and emails.

Unknown sources

Mark the check box to permit installation of applications that you obtain from web sites, emails, or other locations other than Android Play Shop.

To protect your phone and personal data, download applications only from trusted sources, such as Android Play Shop.

Battery use

Touch to show the status of battery using.

Storage use

Touch to view storage use.

Manage applications

Touch to manage and remove installed applications.

Running services

Touch to open a list of services—applications or parts of applications that provide services to other applications, or that run even when their main applications aren't running. Examples include the Android onscreen keyboard and the small portion of Google Talk that always listens for incoming messages. Above each service, one or more gray bars show what processes the running service needs and how much memory they're using (how much memory you would recover if you stopped the service). Depending on the service, when you touch it in the list it either opens a dialog in which you can stop it or opens its Settings screen.

Development

The Development screen contains settings that are useful for developing Android applications. For full information, including documentation of the Android applications and development tools, see the Android developer web site (<http://developer.android.com>).

- **USB debugging:** mark the check box to permit debugging tools on a computer to communicate with your phone via a USB connection.
- **Stay awake:** mark the check box to prevent the screen from dimming and locking when the phone is connected to a charger or to a USB device that provides power. Don't use this setting with a static image on the phone for long periods of time, or the screen may be marked with that image.
- **Allow mock locations:** mark the check box to permit a development tool on a computer to control where the phone believes it is located, rather than using the phone's own internal tools for this purpose.

11.7 Accounts & sync

Use the Accounts & Sync settings to add, remove, and manage your Google and other supported accounts. You can also use these settings to control how and whether all applications send, receive, and synchronize data on their own schedules, and whether all applications can synchronize user data automatically.

Gmail, Google Calendar, and other applications may also have their own settings to control how they synchronize data; see the sections on those applications for details.

11.7.1 General sync settings

Background data

Mark the check box to permit applications to synchronize data in the background, whether or not you are actively working in them. Unmarking this setting can save battery power and lowers (but does not eliminate) data use.

Auto-sync

Mark the check box to permit applications to synchronize data on their own schedule. If you unmark this setting, you must touch an account in the list on this screen, press the **Menu** key, and touch **Sync now** to synchronize data for that account.

Synchronizing data automatically is disabled if **Background data** is unchecked. In that case, the **Auto-sync** checkbox is dimmed.

11.7.2 Manage accounts

The rest of this screen lists the Google Accounts and other accounts you've added to the phone. If you touch an account in this screen, its account screen opens.

This screen contains different options, depending on the kind of account. For Google Accounts, it lists the kinds of data you can synchronize to the phone with checkboxes so you can turn synchronizing on and off for each kind. You can also press the **Menu** key and touch **Sync now** to synchronize data. Touch **Remove Account** to remove the account along with all its data (contacts, mails, settings, and so on).

11.8 Privacy

You use the Privacy settings to manage your personal information.

Back up my data

Mark the check box to back up your phone's settings and other application data to Google Servers, with your Google Account. If you replace your phone, the settings and data you've backed up are restored onto the new phone for the first time you sign in with your Google Account. If you mark this option, a wide variety of settings and data are backed up, including your Wi-Fi passwords, bookmarks, a list of the applications you've installed, the words you've added to the dictionary used by the onscreen keyboard, and most of the settings that you configure with the Settings application. If you unmark this option, you stop backing up your settings, and any existing backups are deleted from Google Servers.

Automatic restore

Mark the check box to restore your backed up settings or other data when you reinstall an application.

Factory data reset

Erase all of your personal data from internal phone storage, including information about your Google Account, any other accounts, your system and application settings, and any downloaded applications. Resetting the phone does not erase any system software updates you've downloaded or any files on your microSD card, such as music or photos. If you reset the phone in this way, you're prompted to re-enter the same kind of information as when you first started Android.

When you are unable to power on your phone, there is another way to perform a factory data reset by using hardware keys. Hold down **Volume up** key and press **Power key** at same time until the screen lights up.

WARNING! Doing a factory data reset will delete all of your personal data and settings stored on your phone.

11.9 SD card & phone storage

Use the microSD card & Phone Storage settings to monitor the total and available space on your phone and on your microSD card; to manage your microSD card; and if necessary, to reset the phone, erasing all of your personal information.

11.9.1 SD card

Total space/Available space

Lists the amount of space on any microSD card installed in your phone and the amount you can use to store photos, videos, music, and other files.

Unmount/Mount SD card

Unmounts the microSD card from your phone so that you can format the card or safely remove it when the phone is on. This setting is dimmed if there is no microSD card installed, or have already unmounted it, or have mounted it on your computer.

Erase SD card

Permanently erases everything on a microSD card and prepares it for use with your phone.

11.9.2 Internal phone storage

Available space

Touch to display the amount of internal phone storage used by the operating system, its components, applications (including those you downloaded), permanent and temporary data.



If a warning message comes up saying that phone memory is limited, you are required to free up space by deleting some unwanted applications, downloaded files, etc.

11.10 Language & keyboard

Use the Language & keyboard settings to select the language for the text on your phone and for configuring the onscreen keyboard, including words that you've added to its dictionary.

11.10.1 Select locale

Touch to select the language and the region you want.

11.10.2 User dictionary

Touch to open a list of the words you've added to the dictionary. Touch a word to edit or delete it. Press the **Menu** key and touch **Add** to add a word.

11.10.3 Android keyboard

For phones with physical keyboards, unmark to disable the onscreen keyboard.

The Android keyboard settings apply to the onscreen keyboard that is included with your phone. The correction and capitalization features affect only the English version of the keyboard. Available options are as follows:

Vibrate on keypress

Mark the check box to have the phone vibrate briefly each time you touch a key on the onscreen keyboard.

Popup on keypress

Mark the check box to popup messages when you input keyboard.

Sound on keypress

Mark the check box to play a brief sound each time you touch a key on the onscreen keyboard.

Touch to correct words

Mark the check box to enable you to correct entered words by touching them.

Auto-capitalisation

Mark the check box to have the onscreen keyboard automatically capitalize the first letter of the first word after a period, the first word in a text field, and each word in name fields.

Show settings key

Touch to set how to show the settings key.

Voice input

Touch to display or not the Mic button on keyboard.

Input languages

Touch to set input language.

Quick fixes

Correct commonly typed mistakes.

Show suggestions

Display suggested words while typing.

Auto-complete

Spacebar and punctuation automatically insert highlighted word.

11.10.4 Swype

To set the options of Swype input method.

Select Input Method

Touch to select the input method between Android keyboard and Swype.

How to Swype

Touch to view how to use the Swype.

Personal dictionary

Touch to open a list of the words you've added to the dictionary. Touch a word to edit or delete it. Press the **Menu** key and touch **Add** to add a word.

Preferences

View and modify Swype options.

Language options

Touch to set the active languages.

11.11 Voice input & output

11.11.1 Voice recogniser settings

Touch to set Google voice recognition items:

- **Language** Choose an input language
- **SafeSearch** Set Google Search safety range
- **Block offensive words** Mark the check box to hide recognized offensive voice results

11.11.2 Text-to-speech settings ⁽¹⁾

You use the Text-to-Speech settings to configure the Android text-to-speech synthesizer, for applications like TalkBack that can take advantage of it.

If you don't have speech synthesizer data installed, only the Install voice data setting is available.

Listen to an example

Touch to play a brief sample of the speech synthesizer, using your current settings.

Always use my settings

Mark the check box to use the settings on this screen in place of speech synthesizer settings available in other applications.

Default Engine

Touch to set the speech synthesis engine to be used for spoken text.

⁽¹⁾ Availability dependent on the country you're based in.

Install voice data

If your phone does not have speech synthesizer data installed, connect to Android Play Shop and find yourself guided through the process of downloading and installing the data. This setting is not available if the data is already installed.

Speech rate

Touch to open a dialog where you can select how quickly you want the synthesizer to speak.

Language

Touch to open a dialog where you can select the language of the text you want the synthesizer to read. This is particularly useful in combination with Always Use My Settings, to ensure that text is spoken correctly in a variety of applications.

11.12 Accessibility ⁽¹⁾

You use the Accessibility settings to configure any accessibility plug-ins you have installed on your phone.

Accessibility

Mark the check box to enable all installed accessibility plug-ins.

KickBack

Mark the check box to have the phone vibrate briefly as feedback as you navigate the user interface, press buttons, and so on.

TalkBack

Mark the check box to have an installed speech synthesizer speak the labels or names of items as you navigate the phone's user interface.

⁽¹⁾ Availability dependent on the country you're based in.

SoundBack

Mark the check box to play a sound as you navigate to the phone's user interface.

Power button ends call

Mark the check box to end a call by pressing **Power** key during the call.

11.13 Date & time

Use Date & Time settings to customise your preferences for how date and time are displayed.

Automatic

Mark the check box to use network-provided values. Or unmark to set all values manually.

Set date

Touch to open a dialog where you can manually set the phone's date.

Select time zone

Touch to open a dialog where you can set the phone's time zone.

Set time

Opens a dialog where you can set the phone's time.

Use 24-hour format

Mark the check box to display the time using 24-hour clock format.

Select date format

Touch to open a dialog where you can select the format for displaying dates.

11.14 About phone

Actually this contains information about a lot of things ranging from Legal information, Model number, Firmware version, Baseband version, Kernel version, Build number to those listed below:

System updates

Touch to check for system updates.

Status

This contains the status of the Battery charging level, My phone number, Network, Signal strength, Mobile network type, Service state, Roaming, Mobile network state, IMEI, IMEI SV, Wi-Fi MAC address, Bluetooth address, Up time.

Battery use

Touch to open a list of the applications and operating system components you have used since you last connected the phone to a power source, sorted by the amount of power they have used. Touch an application in the list to view details about its power use and, if available, touch a button to open a settings or information screen for that component or application.

Legal information

Touch to view legal information.


12 Making the most of your phone

12.1 FOTA Upgrade

Using FOTA Upgrade tool you can update your phone's software.

To access **Firmware Upgrade Manager**, please touch **Menu** key, then press **Settings/About phone/System updates**. Touch **Check for updates**, and the phone will search for the latest software. If you want to update the system, please touch the button **Download**, after it done please touch **Install** to complete the upgrade. Now your phone's software will have the latest version.

Press **Settings and Help**, and you can set **Wi-Fi Only, Auto-check interval, Reminder** and **Help**.

If you have chosen auto-check, when the system discovers the new version, the icon  will appear in the status bar. Touch the notification to access the **Firmware Upgrade Manager** directly.

13 Safety and use

We recommend that you read this chapter carefully before using your cellphone. The manufacturer disclaims any liability for damage, which may result as a consequence of improper use or use contrary to the instructions contained herein.

TRAFFIC SAFETY:

Given that studies show that using a cellphone while driving a vehicle constitutes a real risk, even when the hands-free kit is used (car kit, headset...), drivers are requested to refrain from using their cellphone when the vehicle is not parked. Check the laws and regulations on the use of wireless cellphones and their accessories in the areas where you drive. Always obey them. The use of these devices may be prohibited or restricted in certain areas.

When driving, do not use your cellphone and headphone to listen to music or to the radio. Using a headphone can be dangerous and forbidden in some areas.

When switched on, your cellphone emits electromagnetic waves that can interfere with the vehicle's electronic systems such as ABS anti-lock brakes or airbags. To ensure that there is no problem:

- do not place your cellphone on top of the dashboard or within an airbag deployment area,
- check with your car dealer or the car manufacturer to make sure that the car's electronic devices are shielded from cellphone RF energy.

CONDITIONS OF USE:

You are advised to switch off the cellphone from time to time to optimize its performance.

Remember to abide by local authority rules of cellphone use on aircrafts.

Operational Warnings: Obey all posted signs when using mobile devices in public areas.

Follow Instructions to Avoid Interference Problems: Turn off your mobile device in any location where posted notices instruct you to do so. In an aircraft, turn off your mobile device whenever instructed to do so by airline staff. If your mobile device offers an airplane mode or similar feature, consult airline staff about using it in flight.

Switch the cellphone off when you are in health care facilities, except in designated areas. As with many other types of equipment now in regular use, cellphones can interfere with other electrical or electronic devices, or equipment using radio frequency.

Switch the cellphone off when you are near gas or flammable liquids. Strictly obey all signs and instructions posted in a fuel depot, gas station, or chemical plant, or in any potentially explosive atmosphere.

When the cellphone is switched on, it should be kept at least 15 cm from any medical device such as a pacemaker, a hearing aid or insulin pump. In particular when using the cellphone you should hold it against the ear on the opposite side to the device, if any.

Read and follow the directions from the manufacturer of your implantable medical device. If you have any questions about using your mobile device with your implantable medical device, consult your healthcare provider.

To avoid hearing impairment, answer the call before holding your cellphone to your ear. Also move the handset away from your ear while using the "hands-free" option because the amplified volume might cause hearing damage. It is recommended to have proper supervision while small children use your cellphone.

When replacing the cover please note that your cellphone may contain substances that could create an allergic reaction.

Always handle your cellphone with care and keep it in a clean and dust-free place.

Do not allow your cellphone to be exposed to adverse weather or environmental conditions (moisture, humidity, rain, infiltration of liquids, dust, sea air, etc.). The manufacturer's recommended operating temperature range is -10°C (14°F) to +55°C (131°F)(the max value depends on device, materials and housing paint/texture).

Over 55°C (131°F) the legibility of the cellphone's display may be impaired, though this is temporary and not serious.

Do not open or attempt to repair your cellphone yourself.

Do not drop, throw or try to bend your cellphone.

Do not use the cellphone if the glass made screen, is damaged, cracked or broken to avoid any injury.

Do not paint it.

Use only batteries, battery chargers, and accessories which are recommended by Vodafone Limited and its affiliates and are compatible with your cellphone model.

Vodafone Limited and its affiliates disclaim any liability for damage caused by the use of other chargers or batteries.

Your cellphone should not be disposed of in a municipal waste. Please check local regulations for disposal of electronic products.

Remember to make back-up copies or keep a written record of all important information stored in your cellphone.

Some people may suffer epileptic seizures or blackouts when exposed to flashing lights, or when playing video games. These seizures or blackouts may occur even if a person never had a previous seizure or blackout. If you have experienced seizures or blackouts, or if you have a family history of such occurrences, please consult your doctor before playing video games on your cellphone or enabling a flashing-lights feature on your cellphone. Parents should monitor their children's use of video games or other features that incorporate flashing lights on the cellphones.

All persons should discontinue use and consult a doctor if any of the following symptoms occur: convulsion, eye or muscle twitching, loss of awareness, involuntary movements, or disorientation. To limit the likelihood of such symptoms, please take the following safety precautions:

- Play at the farthest distance possible from the screen.

When you play games on your cellphone, you may experience occasional discomfort in your hands, arms, shoulders, neck, or other parts of your body. Follow these instructions to avoid problems such as tendinitis, carpal tunnel syndrome, or other musculoskeletal disorders:

- Take a minimum of a 15-minute break every hour of game playing.

- If your hands, wrists, or arms become tired or sore while playing, stop and rest for several hours before playing again.

- If you continue to have sore hands, wrists, or arms during or after playing, stop the game and see a doctor.



Prolonged exposure to music at full volume using the music player may damage your hearing. Set your cellphone's volume to its lowest setting prior to inserting headphones in your ears and adjust the volume to your preference. Only use headphones that are recommended by Vodafone Limited and its affiliates.

PRIVACY:

Please note that you must respect the laws and regulations in force in your jurisdiction or other jurisdiction(s) where you will use your cellphone regarding taking photographs and recording sounds with your cellphone. Pursuant to such laws and regulations, it may be strictly forbidden to take photographs and/or to record the voices of other people or any of their personal attributes, and reproduce or distribute them, as this may be considered to be an invasion of privacy.

It is the user's sole responsibility to ensure that prior authorization be obtained, if necessary, in order to record private or confidential conversations or take a photograph of another person; the manufacturer, the seller or vendor of your cellphone (including the operator) disclaim any liability which may result from the improper use of the cellphone.

BATTERY AND ACCESSORIES:

Before removing the battery from your cellphone, please make sure that the cellphone is switched off.

Observe the following precautions for battery use:

- Do not attempt to open the battery (due to the risk of toxic fumes and burns).
- Do not puncture, disassemble or cause a short-circuit in a battery,
- Do not burn or dispose of a used battery in the garbage or store it at temperatures above 60°C (140°F).

Batteries must be disposed of in accordance with locally applicable environmental regulations. Only use the battery for the purpose for which it was designed. Never use damaged batteries or those not recommended by TCT Mobile Limited and/or its affiliates.



This symbol on your cellphone, the battery and the accessories means that these products must be taken to collection points at the end of their life:

- Municipal waste disposal centers with specific bins for these items of equipment
- Collection bins at points of sale.

They will then be recycled, preventing substances being disposed of in the environment, so that their components can be reused.

In European Union countries:

These collection points are accessible free of charge. All products with this sign must be brought to these collection points.

In non European Union jurisdictions:

Items of equipment with this symbol are not to be thrown into ordinary bins if your jurisdiction or your region has suitable recycling and collection facilities; instead they are to be taken to collection points for them to be recycled.

In the United States you may learn more about CTIA's Recycling Program at www.recyclewirelessphones.com

CAUTION: RISK OF EXPLOSION IF BATTERY IS REPLACED BY AN INCORRECT TYPE. DISPOSE OF USED BATTERIES ACCORDING TO THE INSTRUCTIONS

CHARGERS

Home A.C./ Travel chargers will operate within the temperature range of: 0°C (32°F) to 40°C (104°F).

The chargers designed for your cellphone meet with the standard for safety of information technology equipment and office equipment use. Due to different applicable electrical specifications, a charger you purchased in one jurisdiction may not work in another jurisdiction. They should be used for this purpose only.

Characteristics of power supply (depending on the country):

Travel charger: Input: 100-240 V, 50/60 Hz, 0.15 A

Output: 5 V, 550/1000 mA

Battery: Lithium 1150 mAh

RADIO WAVES:

THIS CELLPHONE MEETS THE GOVERNMENT'S REQUIREMENTS FOR EXPOSURE TO RADIO WAVES.

Your cellphone is a radio transmitter and receiver. It is designed and manufactured not to exceed the emission limits for exposure to radio-frequency (RF) energy.

These limits are part of comprehensive guidelines and establish permitted levels of RF energy for the general population. The guidelines are based on standards that were developed by independent scientific organizations through periodic and thorough evaluation of scientific studies. These guidelines include a substantial safety margin designed to ensure the safety of all persons, regardless of age and health.

The exposure standard for cellphones employs a unit of measurement known as the Specific Absorption Rate, or SAR. The SAR limit set by public authorities such as the Federal Communications Commission of the US Government (FCC), or by Industry Canada, is 1.6 W/kg averaged over 1 gram of body tissue. Tests for SAR are conducted using standard operating positions with the cellphone transmitting at its highest certified power level in all tested frequency bands.

Although the SAR is determined at the highest certified power level, the actual SAR level of the cellphone while operating can be well below the maximum value. This is because the cellphone is designed to operate at multiple power levels so as to use only the power required to reach the network. In general, the closer you are to a wireless base station antenna, the lower the power output of the cellphone.

Before a cellphone model is available for sale to the public, compliance with national regulations and standards must be shown.

The highest SAR value for this model cellphone when tested is 0.753 W/Kg for use at the ear and 0.872 W/Kg for use close to the body.

While there may be differences between the SAR levels of various cellphones and at various positions, they all meet the government requirement for RF exposure. For body-worn operation, the cellphone meets FCC RF exposure guidelines provided that it is used with a non-metallic accessory with the handset at least 10 mm from the body. Use of other accessories may not ensure compliance with FCC RF exposure guidelines.

Additional information on SAR can be found on the Cellular Telecommunications & Internet Association (CTIA) Web site: <http://www.phonefacts.net>

The World Health Organization (WHO) considers that present scientific information does not indicate the need for any special precautions for use of cellphones. If individuals are concerned, they might choose to limit their own or their children's RF exposure by limiting the length of calls, or using "hands-free" devices to keep cellphones away from the head and body. (fact sheet n°193). Additional WHO information about electromagnetic fields and public health are available on the following website: <http://www.who.int/peh-emf>.

Note: This equipment has been tested and found to comply with the limits for a Class B digital device pursuant to part 15 of the FCC Rules. These limits are designed to provide reasonable protection against harmful interference in a residential installation. This equipment generates, uses and can radiate radio frequency energy and, if not installed and used in accordance with the instructions, may cause harmful interference to radio communications. However, there is no guarantee that interference to radio or television reception, which can be determined by turning the equipment off and on, the user is encouraged to try to correct the interference by one or more of the following measures:

- Reorient or relocate the receiving antenna.
- Increase the separation between the equipment and receiver.
- Connect the equipment into an outlet on a circuit different from that to which the receiver is connected.
- Consult the dealer or an experienced radio/ TV technician for help.

Changes or modifications not expressly approved by the party responsible for compliance could void the user's authority to operate the equipment.

For the receiver devices associated with the operation of a licensed radio service (e.g. FM broadcast), they bear the following statement:

This device complies with Part 15 of the FCC Rules. Operation is subject to the condition that this device does not cause harmful interference.

For other devices, they bear the following statement:

This device complies with Part 15 of the FCC Rules. Operation is subject to the following two conditions:

- (1) this device may not cause harmful interference
- (2) this device must accept any interference received, including interference that may cause undesired operation.

Your cellphone is equipped with a built-in antenna. For optimal operation, you should avoid touching it or degrading it.

As mobile devices offer a range of functions, they can be used in positions other than against your ear. In such circumstances the device will be compliant with the guidelines when used with headset or usb data cable. If you are using another accessory ensure that whatever product is used is free of any metal and that it positions the cellphone at least 10 mm away from the body.

14 Telephone warranty

WARRANTY TERMS AND CONDITIONS

1. Vodafone undertakes the warranty of this Mobile Phone for a period of two (2) years from the date of Purchase by the original owner (not transferable) under normal use.
2. The Battery has a limited warranty for twelve (12) months, and Charger for twenty-four (24) months against manufacturing defects. Other accessories have a limited warranty for twenty-four (24) months against manufacturing defects.
3. This Warranty does not cover damage resulting from:
 - a) Normal wear & tear of the equipment;
 - b) Defects and damages due to the equipment being used other than its normal and customary manner;
 - c) An unauthorized disassembly, repair, alteration or modification being carried out;
 - d) Misuse, abuse, negligence or accident howsoever caused;
 - e) Defects or damage arising from improper testing, operation, maintenance, installation, or any alteration or modification;
 - f) Defects or damage due to spillage of food or liquids, corrosion, rust or the use of wrong voltage;
 - g) Scratches or damage to plastic surfaces and all other externally exposed parts that are due to normal customer use;
4. The Handset requiring service/repair must be delivered at the user's cost.
5. This warranty will be null and void in any of the following events:
 - a) If the serial number or warranty seal on the equipment has been defaced or removed.
 - b) If any term contained in this warranty has been altered or modified in any way without prior written consent of Vodafone.
6. The limited warranty extends only to customer who purchase the product in one of the countries (or areas) set forth at the end of this document. The limited warranty is only valid in Vodafone's intended country (or area) of sale of the Product.

7. If the product is returned to Vodafone after the expiration of the warranty period, Vodafone's normal service policies shall apply and the Consumer will be charged accordingly.
 - a) Vodafone neither assumes for it any other obligation or liability beyond that which is expressly provided for in this limited warranty.
 - b) All warranty information, product features and specifications are subject to change without notice.
8. THIS WARRANTY IS IN LIEU OF ANY AND OTHER WARRANTIES EXPRESSED OR IMPLIED, SPECIFICALLY INCLUDING ANY IMPLIED WARRANTY OF MERCHANTABILITY OR FITNESS FOR A PARTICULAR PURPOSE. VODAFONE ASSUMES NO LIABILITY FOR THE BREACH OF THE WARRANTY BEYOND CORRECTING THE BREACH IN THE MANNER DESCRIBED ABOVE. IN NO EVENT SHALL VODAFONE BE LIABLE FOR CONSEQUENCES.

15 Accessories ⁽¹⁾

The latest generation of Vodafone GSM mobile phones offers a built-in handsfree feature that allows you to use the telephone from a distance, placed on a table for example. For those who prefer to keep their conversations confidential, an earpiece is also available known as the headset.



Standard charger



UK charger



Battery



USB cable



Stereo headset



microSD card




Only use your telephone with the batteries, chargers and accessories in your box.

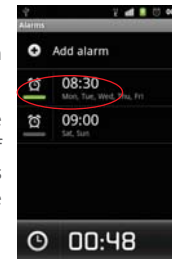
⁽¹⁾ Pictures for reference only.

16 Troubleshooting

Q1. Why does my alarm not work?

Firstly, please be noted that the alarm does not work in power off mode.

Secondly, please remember to check the bar under the icon  is green after you finish editing your alarm. If the bar under the icon is not green, means the alarm is not activated. When the bar under the icon is green, the alarm is activated successfully.



Q2. Why couldn't I see the SD card on PC?

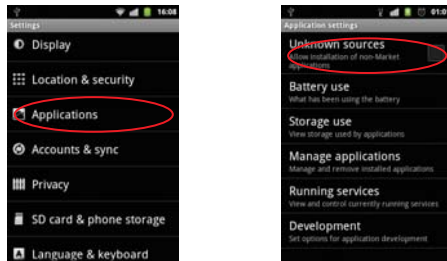
1. Please make sure your SD card is undamaged and can be recognized by your handset.
2. Please make sure the correct USB cable for Vodafone Smart II is used.
3. When you connect the handset to PC, you'll get the notification of **USB connected**. Please press **Turn on USB storage**, and then you can access your SD card on PC.



Q3. How can I install applications such as tools and games?

APK (Android Package) file is the installation file for Android phone, which can be downloaded from Google Play Shop or other websites. Please copy APK files to the SD card and use the built-in File Manager program to open it, then follow the setup wizard to finish the installation.

Please note that the third-party APK files, downloaded from other websites than Google Play Shop, are not allowed to be installed by default due to security reason. You can change the setting by the following the procedures: **Settings->Applications**, then activate **Unknown sources** option.



Q4. How can I uninstall the applications?

The built-in applications in the handset are not allowed to be uninstalled. You can only uninstall the applications installed by yourself.

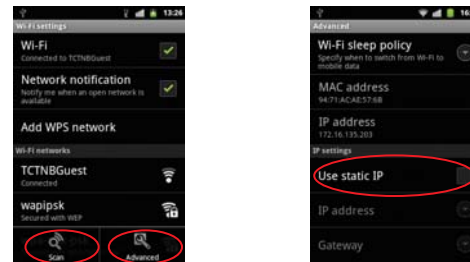
Please press **Menu** key at home screen->**Settings>Applications>Manage applications>Downloaded**, then you can see the applications installed by yourself. Please click the one that you want to uninstall and follow the uninstall process.

Q5. How can I connect to Wi-Fi?

Please press **Menu** key at home screen -> **Settings** -> **Wireless & networks** -> Turn on **Wi-Fi** -> Press **Wi-Fi settings** -> Select **Network notification** -> press **Menu** key -> **Scan** -> The available Wi-Fi networks will be listed.

Press the network which you want to connect. If the connection is successful, the Wi-Fi icon will be shown on the top of the status bar, near the antenna signal icon.

Please be noted that the Wi-Fi function could fail if static IP is activated. You can deactivate **Use static IP** by pressing **Menu** key at home screen -> **Settings** -> **Wireless & networks** -> Turn on **Wi-Fi** -> Press **Wi-Fi settings** -> press **Menu** key -> **Advanced** -> deactivate **Use static IP**.



Q6. Handset cannot power on or power on with strange behavior, such as can not charge, charge abnormally, unlock the screen when you forget the screen unlock pattern, and etc ...

You can initiate a master reboot to the handset following steps as described:

Power off the handset; long press **Volume Up** key + **Power On** in power off mode at the same time for a few seconds until you see the reset interface. After reset you can use mobile normally.

Please note that user data format will erase all data from your phone (not include SD card files and current system software).

Q7. Why is there a notification of connection error or certificates error when I use mail or social network applications?

If the time or time zone is not correctly set, the phone might have connection error or certificates error when you use the above applications. Please set your handset's time to the correct local time including time zone, date and time.

17 Specifications

Processor	Broadcom® 21552™
Platform	Android™ 2.3
Memory	ROM: 512 MB RAM: 512 MB
Dimensions (LxWxT)	109×58×12.35 mm
Weight	Around 144 grams with battery
Display	3.2-inch TFT-LCD touchscreen with 320×480 HVGA resolution
Network	UMTS: Dual-band 900/2100 MHz GSM/GPRS/EDGE: Quad-band 850/900/1800/1900 MHz (Band frequency and data speed are operator dependent.)
GPS	Assisted GPS/Internal GPS antenna
Connectivity	<ul style="list-style-type: none">• Bluetooth® V3.0+EDR• Wi-Fi®: IEEE 802.11 b/g/n• 3.5 mm audio jack• Micro-USB
Camera	3.2 megapixel color camera

Audio supported formats	AAC, AAC+, AAC Enhanced, WB AMR, MP3, Midi
Video supported formats	H.263, H.264, MPEG4
Battery	<ul style="list-style-type: none"> • Rechargeable Lithium-ion battery • Capacity: 1150 mAh
Expansion Slot	microSD™ memory card (Availability of microSD card depends on market)
Special Features	<ul style="list-style-type: none"> • G-sensor • E-Compass • Light and proximity sensor

Note Specifications are subject to change without prior notice.

CJB6050VDAAA