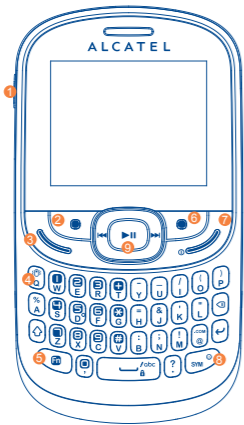


Quick Start Guide

Your mobile.....



- 1 Camera (press)
- 2 Left softkey
- 3 Answer/Send call
- 4 Call log (Idle screen)
- 5 Activate fake call (press and hold)
- 6 Vibrate alert (press and hold)
- 7 Fn key
- 8 Right softkey
- 9 Switch on/ Switch off
- 10 End call
- 11 SYM key
- 12 Navigation key: Menu/Confirm an option

For more information about how to use the phone, please go to www.alcatelone-touch.com to download complete user manual (English version only). Also on our website you can find helpful FAQs (English version only).

Warning: Prolonged exposure to music at full volume on the music player may damage the listener's hearing. Set your phone volume safely. Use only headphones recommended by TCT Mobile Limited and its affiliates.

- When using your telephone for the first time, charge the battery fully (approximately 3 hours). You are advised to fully charge the battery.
- To reduce power consumption and energy waste, when battery is fully charged, disconnect your charger from the plug; reduce the backlight time, etc.

The charge is complete when the animation stops.

2.2 Power on your phone
Hold down the **Power** key until the phone powers on.

2.3 Power off your phone
Hold down the **Power** key from the main screen.

2.4 Home screen



- ### 1.1 Keys
- Navigation key**
Confirm an option (press the middle of the key)
Activate music player (press and hold the middle of key)
Scroll widget bar (press the right or left of the key)
 - Answer**
Send a call
In idle screen:
Access call log (Redial) (press)
Activate fake call (press and hold)
 - Switch on/Switch off the telephone (press and hold)**
End call
Return to idle screen
 - Left softkey**
 - Right softkey**
 - Access your voicemail (press and hold)**
 - In idle screen:**
Press and hold/Press: Lock/Unlock the keypad
In edit mode:
Press: input space
Press and hold: switch language

1 2 3

3 Calls

3.1 Making a call
Dial the desired number then press the **Call** key to place the call. For dual SIM model, you can select either SIM1 or SIM2 when you wish to place a call. If you make a mistake, you can delete the incorrect digits by pressing the right softkey. To hang up the call, press the **End call** key.

Making an emergency call
If your phone is covered by the network, dial emergency number and press the **Emergency** key to make an emergency call. This works even without a SIM card and without typing the PIN code or unlocking the keypad.

3.2 Calling your voicemail (2)
To access your voicemail, hold down the **Voicemail** key.

3.3 Receiving a call
When you receive an incoming call, press the **Call** key to talk and then hang up using the **End call** key.

3.4 Available functions during the call
During a call, you can use your directory, text messages, etc. without hanging up or dropping the call.

(1) one touch 358D only.
(2) Contact your network operator to check service availability.

4 5 6

4 Contacts

4.1 Consulting your contacts
To access the **contacts** from the main screen, press the **Contacts** icon from the menu. For dual SIM model, the complete contacts of both SIM1 and SIM2 are available in this menu.

4.2 Adding a contact
Select the directory in which you wish to add contact, press the **Options** softkey, select **Add contact**.

5 Messaging (1)/ Messages (2)

5.1 Create message
From the main menu select **Messaging**/Messages to create text/multimedia message. For dual SIM model, you can type a message and select to send it to a recipient in either the SIM1 or SIM2 directory. You can type a message and you can also modify a predefined message in **Templates** or customize your message by adding pictures, photos, sounds, titles, etc (only available while editing a MMS). While writing a message, select **Options** to access all the messaging options. You can save your messages that you send often to **Drafts** or **Templates** (MMS only).

Specific letters (accent) will increase the size of the SMS, this may cause multiple SMS to be sent to your recipient.

(1) one touch 358 only.
(2) one touch 358D only.

- In idle screen:**
Press to access shortcuts
Fn + P: Access to Profiles
Fn + Q: Access to Clock
Fn + S: Access to Notes
- In edit mode:**
Press once to input top-half character
Press twice to lock top-half character inputting mode, then press once to unlock top-half character inputting mode
- In edit mode:**
Press: pop up symbol page to select special character by navigation key
- Delete one by one (press)**
Delete one by one quickly (press and hold)
- Move cursor to the next line**
- In idle screen:**
Press and hold: Switch on/off the torch
In edit screen:
Press: Switch the uppercase and lowercase

(1) The icons and illustrations in this guide are provided for information purposes only.
(2) Depending on your network operator.

6 Email.....

Your phone has an email client with the settings predefined for a few popular email services like - GoogleMail, Windows live, Yahoo, AOL, etc. Besides this, you can set up other POP3 or IMAP4 email accounts that you may be using.

7 WAP

Access Wap options: **Homepage, Bookmarks, Recent pages, Offline pages, Go to URL, Settings.**

8 Camera

Your mobile phone is fitted with a camera for taking photos that you can use in different ways:
• store them in your **File manager/My creations**.
• send them in a multimedia message (MMS) to a mobile phone or an email address.
• customize your main screen.
• select them as incoming call image to a contact in your directory.

(1) Depending on your network operator.

- ### 1.2 Main screen icons (1)
- In one touch 358:**
- Battery charge level**
 - Vibrate alert:** your phone vibrates, but does not ring or beep.
 - Headset connected.**
 - Keypad locked.**
 - Call forwarding activated:** your calls are forwarded.
 - Alarm or appointments programmed.**
 - Level of network reception.**
 - Voicemail message arrived.**
 - Missed calls.**
 - Radio is on.**
 - WAP alerts (2).**
 - Roaming.**

(1) The icons and illustrations in this guide are provided for information purposes only.
(2) Depending on your network operator.

9 Media

9.1 Music player
Access this feature from the main menu by selecting **Media Music player**. You will have full flexibility of managing music both on your mobile and memory card.

9.2 FM Radio
Your phone is equipped with a radio (1) with RDS (2) functionality. You can use the application as a traditional radio with saved channels or with parallel visual information related to the radio program on the display if you tune to stations that offer Visual Radio service. You can listen to it while running other applications.

10 Settings

From the main menu, select the menu icon and select the function of your choice in order to customize your telephone: **Phone settings, Call settings, Security, Networks, Connectivity.**

(1) The quality of the radio depends on the coverage of the radio station in that particular area.
(2) Depending on your network operator and market.

- SIM card missing.**
- microSD card available.**
- GPRS connection status (Activated).**
- GPRS connecting.**
- Sending a MMS.**
- MMS receiving.**
- Silence mode:** your phone does not ring, beep or vibrate.
- SMS unread.**
- MMS unread.**
- Email unread.**
- Flight mode.**

- In one touch 358D:**
- Call forwarding activated:** your calls are forwarded.
 - Level of network reception.**
 - GPRS connection status.**
 - GPRS connecting.**

11 Call log

You can access your call memory by pressing **Call log** from the idle screen, and you will see Outgoing call(s), Missed call(s) and Answered call(s).

12 Tools.....

- 12.1 Alarm**
Your mobile phone has a built-in alarm clock with a snooze feature.
- 12.2 Calendar**
Once you enter this menu from the main menu, there is a monthly-view calendar for you to keep track of important meetings, appointments, etc. Days with events entered will be marked in color.
- 12.3 Voice reminder**
After accessing Voice reminder, you may select Create voice reminder to record a sound file. Then you may set the date, time, mode, etc. If you select Directly play mode, the recorded sound file will play automatically as the voice reminder at the very time and date you have set.
- 12.4 Notes**
You can create a note in text or voice format by accessing **Tools/Notes** from the main menu.
- 12.5 Calculator**
Enter a number, select the type of operation to be performed, and enter the second number, then press "=" to display the result.
- 12.6 Converter**
Unit convertor and Currency convertor.
- 12.7 World clock**
The World clock shows current local time and the time zone in different cities.
- 12.8 Fake call**
This program enables you to call yourself by simulating a caller number/name, ringtone, contact photo at a scheduled time. It helps you to politely escape from social situations at any time you wish. This call can be rejected by **End call** key.

(1) one touch 358D only.

2 Getting started.....

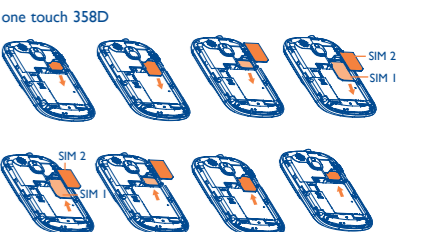
2.1 Set-up
Removing and installing the back cover



Removing and installing the battery

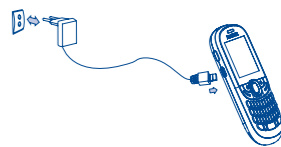


Removing and inserting the SIM card
one touch 358



Place the SIM card with the chip facing downwards and slide it into its housing. Make sure that it is correctly inserted. To remove the card, press it and slide it out.

Charging the battery (1)



- Connect the battery charger to your phone and outlet respectively.
- The charging may take about 20 minutes to start if the battery is flat.
 - Be careful not to force the plug into the socket.
 - Make sure the battery is correctly inserted before connecting the charger.
 - The outlet must be near to the phone and easily accessible (avoid electric extension cables).

(1) Depending on your country.

13 Applications.....

- Settings** • Predefined settings of Caller name/number, Call time, Ringtone, Image (Contact photo).
- Activate** • Activate a fake call by **Tools/Fake call Activate** or by pressing and holding the **Call** key on the main screen. The call will then be made at the predetermined time.
- 12.9 Stopwatch**
The stopwatch is a simple application for measuring time with the possibility to register several results and suspend/resume measurement.
- 12.10 Torch**
To light in darkness, you may activate **Torch** by below operations:
In idle screen, press and hold **Torch** key to switch on/off the Torch.
- 13.1 Games**
Your phones includes some games. Select **Game settings**, it allows you to manage settings, in which you may set background audio and vibrate alert.
- 13.2 Weather**
Your phone is equipped with a weather function for consulting up to 3-day forecasts of favorite cities.

