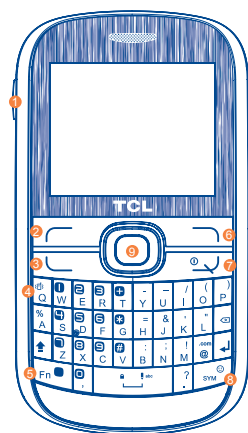


Quick Start Guide

For more information about how to use the cellphone, please go to www.alcatelontouch.com to download complete user manual (English version only). Moreover, from the website you can also consult FAQ (English version only).

Your cellphone



- 1 Camera
- 2 Left softkey
- 3 Answer/Send call
- 4 Call log (Idle screen)
- 5 Activate fake call (press and hold)
- 6 Vibrate alert (press and hold)
- 7 Fn key
- 8 Right softkey
- 9 Switch on/ Switch off
- 10 End call
- 11 SYM key
- 12 Navigation key: Menu/Confirm an option

1.1 Keys

- Navigation key
Confirm an option (press the middle of the key)
Activate music player (press and hold the middle of key)
Scroll widget bar (press the right or left of the key)
- Answer
Send a call
In idle screen:
Access call log (Redial) (press)
Activate fake call (press and hold)
During MP3 Playing:
Switch between Headset and speaker (press and hold)
- Switch on/Switch off the cellphone (press and hold)
End call
Return to idle screen
- Left softkey
- Right softkey
- Access your voicemail (press and hold)
- In idle screen:
Press and hold/press: Lock/Unlock the keypad
In edit mode:
Press: input space
Press and hold: switch language

1.2 Main screen icons (1)

- Battery charge level**
- Vibrate alert:** your cellphone vibrates, but does not ring or beep.
- Bluetooth status (Activated).**
- Bluetooth status (Connected to an audio device).**
- Headset connected.**
- Keypad locked.**
- Call forwarding activated:** your calls are forwarded.
- Alarm or appointments programmed.**
- Level of network reception.**
- Voicemail message arrived.**
- Missed calls.**
- Radio is on.**
- In idle screen:
Press to access shortcuts
Fn + P: Access to Profiles
Fn + Q: Access to Clock
Fn + S: Access to Notes
In edit mode:
Press once to input top-half character
Press twice to lock top-half character inputting mode, then press once to unlock top-half character inputting mode
- Delete one by one (press)
Delete one by one quickly (press and hold)
- Move cursor to the next line
- Switch the uppercase and lowercase (in edit screen)

(1) The icons and illustrations in this guide are provided for information purposes only.

1.3 Music

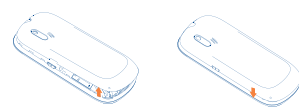
- WAP alerts (1).**
- Roaming.**
- SIM card missing.**
- MicroSD card available.**
- GPRS connection status (Activated).**
- GPRS connecting.**
- Sending a MMS.**
- MMS receiving.**
- Silence mode:** your cellphone does not ring, beep or vibrate with the exception of the alarm.
- SMS unread.**
- MMS unread.**
- Email unread.**
- Flight mode.**

(1) Depending on your network operator.

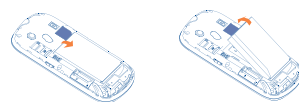
2 Getting started.....

2.1 Set-up

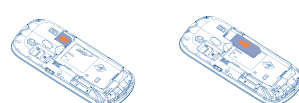
Removing and installing the back cover



Removing and installing the battery

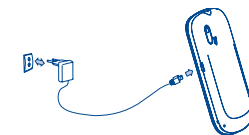


Inserting and removing the SIM card



Place the SIM card with the chip facing downwards and slide it into its housing. Make sure that it is correctly inserted. To remove the card, press it and slide it out.

Charging the battery (1)



- Connect the battery charger to your cellphone and outlet respectively.
- The charging may take about 20 minutes to start if the battery is flat.
 - Be careful not to force the plug into the socket.
 - Make sure the battery is correctly inserted before connecting the charger.
 - The outlet must be near to the cellphone and easily accessible (avoid electric extension cables).
 - When using your cellphone for the first time, charge the battery fully (approximately 3 hours). You are advised to fully charge the battery (1).
 - To reduce power consumption and energy waste, when battery is fully charged, disconnect your charger from the plug; switch off Bluetooth when not in use; reduce the backlight time, etc.

The charge is complete when the animation stops.

(1) Depending on your country.

2.2 Power on your cellphone

Hold down the key until the cellphone powers on.

2.3 Power off your cellphone

Hold down the key from the main screen.

2.4 Home screen



Status Bar
Status/Notification indicators

Wallpaper

Widget Bar
You can add your favorite applications to your Idle Widget Bar for quick view or access. Press the right or left of Navigation key to select the widget and then press key. You may also customize widget bar by Settings/Phone settings/Widget bar.

3 Calls

3.1 Making a call

Dial the desired number then press the key to place the call. If you make a mistake, you can delete the incorrect digits by pressing the right softkey. To hang up the call, press the key.

Making an emergency call

If your cellphone is covered by the network, dial emergency number and press the key to make an emergency call. This works even without a SIM card and without typing the PIN code or unlocking the keypad.

3.2 Calling your voicemail (1)

To access your voicemail, hold down the key.

3.3 Receiving a call

When you receive an incoming call, press the key to talk and then hang up using the key.

3.4 Available functions during the call

During a call, you can use your directory, your calendar, short messages, etc. without losing your correspondent.

(1) Contact your network operator to check service availability.
English - CJB23FALCAAA

4 Contacts

4.1 Consulting your contacts

To access the **contacts** from the main screen, press the key and select the icon from the menu.

4.2 Adding a contact

Select the directory in which you wish to add contact, press the "Options" softkey, select "Add contact".

5 Messaging

5.1 Create message

From the main menu select "Messaging" to create text/multimedia message. You can type a message and you can also modify a predefined message in **Templates** or customize your message by adding pictures, photos, sounds, titles, etc (only available while editing a MMS). While writing a message, select "Options" to access all the messaging options. You can save your messages that you send often to **Draft** or **Templates** (MMS only).

Specific letters (accent) will increase the size of the SMS, this may cause multiple SMS to be sent to your recipient.

(1) Depending on your network operator.

6 Email

Your cellphone has an email client with the settings predefined for a few popular email services like – GoogleMail, Windows live, Yahoo, AOL, etc. (1) Besides this, you can set up other POP3 or IMAP4 email accounts that you may be using.

7 Opera Mini

Not only does Opera Mini give you the full Web experience where you stay in touch with your friends, obtain information, do your online banking etc., but it is also designed to save time by using compressed web pages.

8 mTweet

Twitter is a social networking and microblogging service that has gained notability and popularity worldwide. This feature enables cellphone users to exchange news updates and ideas with a community in the form of messages or posts. Posts are displayed on the author's profile page and delivered to the author's subscribers or followers.

To open an account online, please go to: <http://twitter.com/>.

(1) Depending on your network operator.

9 Palringo (1)

Palringo Instant messaging (IM) allows you to chat with other people using Palringo account. You can also connect to other popular IM services through Palringo, like Yahoo, AIM, GG, ICQ, Google talk, iChat etc. Please note that the services may be upgraded depending on your client version.

10 Media

10.1 Camera

Your cellphone is fitted with a camera for taking photos and shooting videos that you can use in different ways:

- store them in your "File manager/My photos".
- send them in a multimedia message (MMS) to a cellphone or an email address.
- send them directly by Email or Bluetooth.
- customize your main screen.
- select them as incoming call image to a contact in your directory.

10.2 Video

"My videos" album contains video clips recorded, received or downloaded.

(1) Depending on your network operator.

11 My friends

It migrates self-contained sub-trees of the websites to let you stay in touch with your friends by flicking through Bebo, Friendster, Hi5, My space, Flickr etc.

12 Settings

From the main menu, select the menu icon and select the function of your choice in order to customize your cellphone: **Phone settings, Call settings, Security, Network, Connectivity.**

(1) The quality of the radio depends on the coverage of the radio station in that particular area.

13 Call log

You can access your call memory by pressing from the idle screen, and you will see Outgoing call(s), Missed call(s) and Answered call(s).

14 Tools

14.1 Alarm

Your cellphone has a built-in alarm clock with a snooze feature.

14.2 Calendar

Once you enter this menu from the main menu, there is a monthly-view calendar for you to keep track of important meetings, appointments, etc. Days with events entered will be marked in color.

14.3 Notes

You can create a note in text or voice format by accessing "Tools/Notes" from the main menu.

(1) Depending on your network operator.

14.4 Calculator

Enter a number, select the type of operation to be performed, and enter the second number, then press "=" to display the result.

14.5 Converter

Unit convertor and Currency convertor.

14.6 World clock

The World clock shows current local time and the time zone in different cities.

14.7 Fake call

This program enables you to call yourself by simulating a caller number/name, ringtone, contact photo at a scheduled time. It helps you to politely escape from social situations at any time you wish. This call can be rejected by key.

- Settings** • Predefined settings of Caller name/number, Call time, Ringtone, Image (Contact photo).
- Activate** • Activate a fake call by "Tools/Fake call/Activate" or by press and hold of the key on the main screen. The call will then be made at the predetermined time.

14.8 Stopwatch

The stopwatch is a simple application for measuring time with the possibility to register several results and suspend/resume measurement.

(1) Depending on your network operator.

15 Java

Your Alcatel cellphone may include (1) some Java™ applications and games. You can also download new applications and games to your cellphone.

15.1 Java applications

Select "Java applications" to launch applications.

15.2 Java settings

This menu allows you to manage Java settings, in which you may set Audio, Backlight, Vibration and Heap size.

15.3 Java network

This menu allows you to select the network for Java.

15.4 Trusted certificates

View detailed information of the trusted certificates supported by your cellphone.

16 Applications.....

16.1 News

It is a huge time saver providing news updates from a website in a simple form. Once subscribed to a channel, it gives you the ability to track and manage all your favorite RSS content on your cellphone at anytime, anywhere!

(1) Depending on your network operator.

16.2 Weather

Your cellphone is equipped with a weather function for consulting up to 3-day forecasts of favorite cities.

16.3 Bluetooth™

Access this feature by pressing to enter the main menu, then selecting "Applications/Bluetooth".

16.4 WAP

Access Wap options: **Homepage, Bookmarks, Recent pages, Offline pages, Go to URL, Push inbox, Settings.**

16.5 Services

Contact your network operator to check service availability.

17 Profiles

With this menu, you may personalize ringtones for different events and environments.

18 File manager ...

You will have access to all audio and visual files stored in cellphone or memory card in File manager. You can access a number of items with this option: **My audios, My images, My photos, My videos, Other files, Phone, Memory card and Memory status.**

(1) Depending on your network operator.

Inserting the memory card:



To release the microSD card holder, slide it in the direction of the arrow and lift it. Then insert the microSD card with the golden contact downward. Finally, turn down the microSD holder and slide it in the opposite direction to lock it.



Do not support hot plugging for microSD card.

19 Making the most of your cellphone..

PC suite

You can download software upgrade for free from the website. The PC suite includes:

- **Backup/restore**
You can backup the important data in your cellphone and restore them when needed.
- **GPRS modem**
Use your cellphone to connect PC to the internet.

⁽¹⁾ The using of webcam may vary according to the operating system of your PC.

Hearing Aid Compatibility

Your cellphone is rated: "For Hearing Aid", to assist hearing device users in finding cellphones that may be compatible with their hearing devices. This device is HAC M3 and T3 compatible. For more information please refer to "Hearing Aid Compatibility with Mobile Phones" leaflet or visit our website <http://www.alcatelone-touch.com>

General information

- **Website:** www.alcatelone-touch.com
- **Facebook:** <http://www.facebook.com/alcatelone-touchusa>
- **Twitter:** <http://www.twitter.com/alcatel1touch>
- **Hot Line Number:** In the United States, call 877-702-3444 for technical support.

On our Internet site, you will find our FAQ (Frequently Asked Questions) section. You can also contact us by e-mail to ask any questions you may have. An electronic version of this user guide is available in English and other languages according to availability on our server: www.alcatelone-touch.com

Your cellphone is a transceiver that operates on GSM networks with 850 and 1900 MHz bands.

Protection against theft ⁽¹⁾

Your cellphone is identified by an IMEI (cellphone serial number) shown on the packaging label and in the product's memory. We recommend that you note the number the first time you use your cellphone by entering ***#06#** and keep it in a safe place. It may be requested by the police or your operator if your cellphone is stolen.

Disclaimer

There may be certain differences between the user manual description and the cellphone's operation, depending on the software release of your cellphone or specific operator services.

TCT Mobile shall not be held legally responsible for such differences, if any, nor for their potential consequences, which responsibility shall be borne by the operator exclusively.

⁽¹⁾ Contact your network operator for service availability.

20 Latin input mode..

To write messages, there are two writing methods:

- Normal: this mode allows you to type a text by choosing a letter or a sequence of characters associated with a key.

- Predictive with the ZI mode: This mode speeds up the writing of your text.

Fn key Fn : Press once: input top-half character.
Press twice: lock top-half character inputting mode, then press once to unlock top-half character inputting mode.

Space key ␣: Press: input space
Press and hold: switch language
Fn+Space: switch input mode

Shift key ⇧: In abc (MultiTapbc) input mode (no Abc mode):

Press once: only switch one character from minuscule to uppercase
Press twice: lock uppercase input mode
Press once: unlock the uppercase

In eZiabc (Smartabc) input mode:
Press once: to eZi Abc
Press twice: to eZi ABC

Del key ⌫: Press: delete one by one
Press and hold: delete one by one quickly

Safety and use.....

We recommend that you read this chapter carefully before using your cellphone. The manufacturer disclaims any liability for damage, which may result as a consequence of improper use or use contrary to the instructions contained herein.

•TRAFFIC SAFETY:
Given that studies show that using a cellphone while driving a vehicle constitutes a real risk, even when the hands-free kit is used (car kit, headset...), drivers are requested to refrain from using their cellphone when the vehicle is not parked. Check the laws and regulations on the use of wireless cellphones and their accessories in the areas where you drive. Always obey them. The use of these devices may be prohibited or restricted in certain areas.

When driving, do not use your cellphone and headphone to listen to music or to the radio. Using a headphone can be dangerous and forbidden in some areas.

When switched on, your cellphone emits electromagnetic waves that can interfere with the vehicle's electronic systems such as ABS anti-lock brakes or airbags. To ensure that there is no problem:

- do not place your cellphone on top of the dashboard or within an airbag deployment area,
- check with your car dealer or the car manufacturer to make sure that the car's electronic devices are shielded from cellphone RF energy.

• CONDITIONS OF USE:
You are advised to switch off the cellphone from time to time to optimize its performance.

Remember to abide by local authority rules of cellphone use on aircrafts. Operational Warnings: Obey all posted signs when using mobile devices in public areas.

Follow Instructions to Avoid Interference Problems: Turn off your mobile device in any location where posted notices instruct you to do so. In an aircraft, turn off your mobile device whenever instructed to do so by airline staff. If your mobile device offers an airplane mode or similar feature, consult airline staff about using it in flight.

Switch the cellphone off when you are in health care facilities, except in designated areas. As with many other types of equipment now in regular use, cellphones can interfere with other electrical or electronic devices, or equipment using radio frequency.

Switch the cellphone off when you are near gas or flammable liquids. Strictly obey all signs and instructions posted in a fuel depot, gas station, or chemical plant, or in any potentially explosive atmosphere.

When the cellphone is switched on, it should be kept at least 15 cm from any medical device such as a pacemaker, a hearing aid or insulin pump. In particular when using the cellphone you should hold it against the ear on the opposite side to the device, if any.

Read and follow the directions from the manufacturer of your implantable medical device. If you have any questions about using your mobile device with your implantable medical device, consult your healthcare provider. To avoid hearing impairment, answer the call before holding your cellphone to your ear. Also move the handset away from your ear while using the "hands-free" option because the amplified volume might cause hearing damage.

It is recommended to have proper supervision while small children use your cellphone. When replacing the cover please note that your cellphone may contain substances that could create an allergic reaction. Always handle your cellphone with care and keep it in a clean and dust-free place.

Do not allow your cellphone to be exposed to adverse weather or environmental conditions (moisture, humidity, rain, infiltration of liquids, dust, sea air, etc.). The manufacturer's recommended operating temperature range is -10°C (14°F) to +55°C (131°F) (the max value depends on device, materials and housing paint/texture).

Over 55°C (131°F) the legibility of the cellphone's display may be impaired, though this is temporary and not serious. Do not open or attempt to repair your cellphone yourself. Do not drop, throw or try to bend your cellphone.

Do not paint it. Use only batteries, battery chargers, and accessories which are recommended by TCT Mobile Limited and its affiliates and are compatible with your cellphone model. TCT Mobile Limited and its affiliates disclaim any liability for damage caused by the use of other chargers or batteries.

Your cellphone should not be disposed of in a municipal waste. Please check local regulations for disposal of electronic products. Remember to make back-up copies or keep a written record of all important information stored in your cellphone.

Some people may suffer epileptic seizures or blackouts when exposed to flashing lights, or when playing video games. These seizures or blackouts may occur even if a person never had a previous seizure or blackout. If you have experienced seizures or blackouts, or if you have a family history of such occurrences, please consult your doctor before playing video games on your cellphone or enabling a flashing-lights feature on your cellphone. Parents should monitor their children's use of video games or other features that incorporate flashing lights on the cellphones. All persons should discontinue use and consult

a doctor if any of the following symptoms occur: convulsion, eye or muscle twitching, loss of awareness, involuntary movements, or disorientation. To limit the likelihood of such symptoms, please take the following safety precautions: - Play at the farthest distance possible from the screen.

When you play games on your cellphone, you may experience occasional discomfort in your hands, arms, shoulders, neck, or other parts of your body. Follow these instructions to avoid problems such as tendinitis, carpal tunnel syndrome, or other musculoskeletal disorders:

- Take a minimum of a 15-minute break every hour of game playing.
- If your hands, wrists, or arms become tired or sore while playing, stop and rest for several hours before playing again.
- If you continue to have sore hands, wrists, or arms during or after playing, stop the game and see a doctor.

⚠ Prolonged exposure to music at full volume using the music player may damage your hearing. Set your cellphone's volume to its lowest setting prior to inserting headphones in your ears and adjust the volume to your preference. Only use headphones that are recommended by TCT Mobile Limited and its affiliates.

• PRIVACY:
Please note that you must respect the laws and regulations in force in your jurisdiction or other jurisdiction(s) where you will use your cellphone regarding taking photographs and recording sounds with your cellphone. Pursuant to such laws and regulations, it may be strictly forbidden to take photographs and/or to record the voices of other people or any of their personal attributes, and reproduce or distribute them, as this may be considered to be an invasion of privacy.

It is the user's sole responsibility to ensure that prior authorization be obtained, if necessary, in order to record private or confidential conversations or take a photograph of another person; the manufacturer, the seller or vendor of your cellphone (including the operator) disclaim any liability which may result from the improper use of the cellphone.

• BATTERY AND ACCESSORIES:
Before removing the battery from your cellphone, please make sure that the cellphone is switched off.

Observe the following precautions for battery use:

- Do not attempt to open the battery (due to the risk of toxic fumes and burns).
- Do not puncture, disassemble or cause a short-circuit in a battery.
- Do not burn or dispose of a used battery in the garbage or store it at temperatures above 60°C (140°F).

Batteries must be disposed of in accordance with locally applicable environmental regulations. Only use the battery for the purpose for which

it was designed. Never use damaged batteries or those not recommended by TCT Mobile Limited and/or its affiliates.

⚠ This symbol on your cellphone, the battery and the accessories means that these products must be taken to collection points at the end of their life:

- Municipal waste disposal centers with specific bins for these items of equipment
- Collection bins at points of sale.

They will then be recycled, preventing substances being disposed of in the environment, so that their components can be reused.

In European Union countries:
These collection points are accessible free of charge. All products with this sign must be brought to these collection points.

In non European Union jurisdictions:
Items of equipment with this symbol are not to be thrown into ordinary bins if your jurisdiction or your region has suitable recycling and collection facilities; instead they are to be taken to collection points for them to be recycled.

In the United States you may learn more about CTIA's Recycling Program at www.recyclewirelessphones.com

CAUTION: RISK OF EXPLOSION IF BATTERY IS REPLACED BY AN INCORRECT TYPE. DISPOSE OF USED BATTERIES ACCORDING TO THE INSTRUCTIONS

• CHARGERS
Home A.C./Travel chargers will operate within the temperature range of: 0°C (32°F) to 40°C (104°F).

The chargers designed for your cellphone meet with the standard for safety of information technology equipment and office equipment use. Due to different applicable electrical specifications, a charger you purchased in one jurisdiction may not work in another jurisdiction. They should be used for this purpose only.

Characteristics of power supply (depending on the country):
Travel charger: Input: 100-240 V, 50/60 Hz, 0.15A
Output: 5V, 400/550 mA
Lithium 850 mAh

RADIO WAVES:
THIS CELLPHONE MEETS THE GOVERNMENT'S REQUIREMENTS FOR EXPOSURE TO RADIO WAVES.

Your cellphone is a radio transmitter and receiver. It is designed and manufactured not to exceed the emission limits for exposure to radio-frequency (RF) energy. These limits are part of comprehensive guidelines and establish permitted levels of RF energy for the general population. The guidelines are based on standards that were developed by independent scientific organizations through periodic and thorough evaluation of scientific studies. These guidelines include a substantial safety margin designed to ensure

Unable to make outgoing calls

- Make sure you have dialed a valid number and press the key
- For international calls, check the country and area codes
- Make sure your cellphone is connected to a network, and the network is not overloaded or unavailable
- Check your subscription status with your operator (credit, SIM card valid, etc.)
- Make sure you have not barred outgoing calls
- Make sure that your cellphone is not in flight mode

Unable to receive incoming calls

- Make sure your cellphone is switched on and connected to a network (check for overloaded or unavailable network)
- Check your subscription status with your operator (credit, SIM card valid, etc.)
- Make sure you have not forwarded incoming calls
- Make sure that you have not barred certain calls
- Make sure that your cellphone is not in flight mode

The caller's name/number does not appear when a call is received

- Check that you have subscribed to this service with your operator
- Your caller has concealed his/her name or number

I cannot find my contacts

- Make sure your SIM card is not broken
- Make sure your SIM card is inserted properly
- Import all contacts stored in SIM card to cellphone

The sound quality of the calls is poor

- You can adjust the volume during a call by pressing the key
- Check the network strength
- Make sure that the receiver, connector or speaker on your cellphone is clean

the safety of all persons, regardless of age and health. The exposure standard for cellphones employs a unit of measurement known as the Specific Absorption Rate, or SAR. The SAR limit set by public authorities such as the Federal Communications Commission of the US Government (FCC), or by Industry Canada, is 1.6 W/kg averaged over 1 gram of body tissue. Tests for SAR are conducted using standard operating positions with the cellphone transmitting at its highest certified power level in all tested frequency bands.

Although the SAR is determined at the highest certified power level, the actual SAR level of the cellphone while operating can be well below the maximum value. This is because the cellphone is designed to operate at multiple power levels so as to use only the power required to reach the network. In general, the closer you are to a wireless base station antenna, the lower the power output of the cellphone. Before a cellphone model is available for sale to the public, compliance with national regulations and standards must be shown.

The highest SAR value for this model cellphone when tested is 0.999 W/kg for use at the ear and 1.12 W/kg for use close to the body. While there may be differences between the SAR levels of various cellphones and at various positions, they all meet the government requirement for RF exposure. For body-worn operation, the cellphone meets FCC RF exposure guidelines provided that it is used with a non-metallic accessory with the handset at least 1.5 cm from the body. Use of other accessories may not ensure compliance with FCC RF exposure guidelines.

Additional information on SAR can be found on the Cellular Telecommunications & Internet Association (CTIA) Web site: <http://www.phonefacts.net>

The World Health Organization (WHO) considers that present scientific information does not indicate the need for any special precautions for use of cellphones. If individuals are concerned, they might choose to limit their own or their children's RF exposure by limiting the length of calls, or using "hands-free" devices to keep cellphones away from the head and body. (fact sheet n°193). Additional WHO information about electromagnetic fields and public health are available on the following website: <http://www.who.int/peh-emf>

Note: This equipment has been tested and found to comply with the limits for a Class B digital device pursuant to part 15 of the FCC Rules. These limits are designed to provide reasonable protection against harmful interference in a residential installation. This equipment generates, uses and can radiate radio frequency energy and, if not installed and used in accordance with the instructions, may cause harmful interference to radio communications.

However, there is no guarantee that interference to radio or television reception, which can be determined by turning the equipment off and on, the user is encouraged to try to correct the interference by one or more of the following measures:

- Reorient or relocate the receiving antenna.
- Increase the separation between the equipment and receiver.
- Connect the equipment into an outlet on a circuit different from that to which the receiver is connected.
- Consult the dealer or an experienced radio/TV technician for help.

Changes or modifications not expressly approved by the party responsible for

compliance could void the user's authority to operate the equipment. For the receiver devices associated with the operation of a licensed radio service (e.g. FM broadcast), they bear the following statement: This device complies with Part 15 of the FCC Rules. Operation is subject to the condition that this device does not cause harmful interference. For other devices, they bear the following statement: This device complies with Part 15 of the FCC Rules. Operation is subject to the following two conditions:

- (1) this device may not cause harmful interference
- (2) this device must accept any interference received, including interference that may cause undesired operation.

Your cellphone is equipped with a built-in antenna. For optimal operation, you should avoid touching it or degrading it. As mobile devices offer a range of functions, they can be used in positions other than against your ear. In such circumstances the device will be compliant with the guidelines when used with headset or usb data cable. If you are using another accessory ensure that whatever product is used is free of any metal and that it positions the cellphone at least 1.5 cm away from the body.

• LICENCES

Obigo®



is a registered trademark of Obigo AB.



microSD Logo is a trademark.

The Bluetooth word mark and logos are owned by the Bluetooth SIG, Inc. and any use of such marks by TCT Mobile Limited and its affiliates is under license. Other trademarks and trade names are those of their respective owners.

TCL 5185 Bluetooth QD ID B016876



eZiText™ and Zi™ are trademarks of Zi Corporation and/or its Affiliates.



Java™ and all Java™ based trademarks and logos are trademarks or registered trademarks of Sun Microsystems, Inc. in the U.S. and other countries.



Opera Mini™ is a registered trademark of Opera Mini.



Twitter and the T Logo are trademarks of Twitter, Inc., and are used under license.

Twitter and the T Logo are trademarks of Twitter, Inc., and are used under license.

Twitter and the T Logo are trademarks of Twitter, Inc., and are used under license.

SIM card PIN locked

• Contact your network operator to obtain the PUK code (Personal Unlocking Key)

I am unable to connect my cellphone to my computer

- Install Alcatel's PC suite first of all
- Check that your computer meets the requirements for Alcatel's PC Suite installation

I am unable to download new files

- Make sure there is sufficient phone memory for your download
- Select the Micro-SD card as the location to store downloaded files
- Check your subscription status with your operator

The cellphone cannot be detected by others via Bluetooth

- Make sure that Bluetooth is turned on and your cellphone is visible to other users
- Make sure that the two cellphones are within Bluetooth's detection range

How to make your battery last longer

- Make sure you follow the complete charge time (minimum 3 hours)
- After a partial charge, the battery level indicator may not be exact. Wait for at least 20 minutes after removing the charger to obtain an exact indication
- Switch on the backlight upon request
- Extend the email auto-check interval for as long as possible
- Update news and weather information on manual demand, or increase their auto-check interval
- Exit background-running Java applications if they are not being used for a long time
- Deactivate Bluetooth when not in use

ALCATEL is a trademark of Alcatel-Lucent and used under license by TCT Mobile Limited.

All rights reserved © Copyright 2012 TCT Mobile Limited.

TCT Mobile Limited reserves the right to alter material or technical specification without prior notice.