

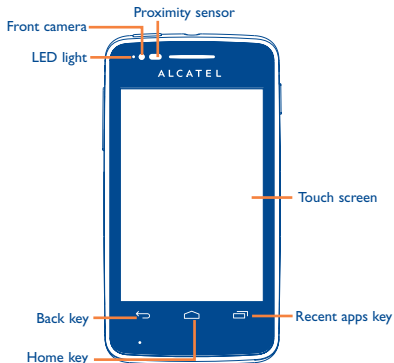
one touch | 4030A  
one touch | 4030E

Your mobile.....

## 1.1 Keys and connectors

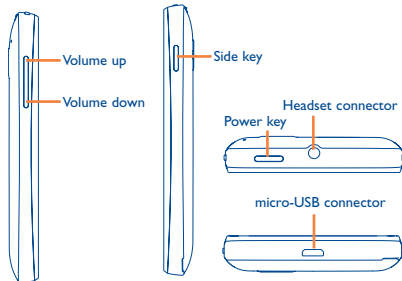
# Quick Start Guide

For more information about how to use the cellphone, please go to [www.alcatelonetouch.com](http://www.alcatelonetouch.com) to download complete user manual. Also on our website you can find helpful FAQs, realize software upgrade, etc.



### PROTECT YOUR HEARING

To prevent possible hearing damage, do not listen at high volume levels for long periods. Exercise caution when holding your device near your ear while the loudspeaker is in use.

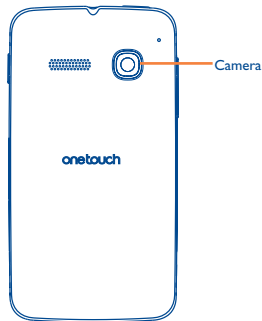


ALCATEL **onetouch**

English - CJB26N1ALAAA

1

2



#### **Recent apps key**

- Open a list of thumbnail images of apps you've worked with recently. Touch it to open an app. Swipe it left or right to remove a thumbnail from the list.



#### **Home key**

- While on any application or screen, touch to return to the Home screen.



#### **Back key**

- Touch to go back to the previous screen, or to close a dialog box, options menu, the notification panel, etc.



#### **Power key**

- Press: Lock the screen/Light up the screen
- Press and hold: Show the pop-up menu to select from Ringer mode/Airplane mode/Power off  
Press and hold: Power on
- Press and hold **Power** key and **Volume down** key to capture a screenshot.
- Press and hold **Power** key and **Volume up** key to restore factory set.

#### **Volume Keys**

- Under call mode, adjust the earpiece or headset volume.
- In Music/Video/Streaming mode, adjust the media volume.
- In general mode, adjust the ring tone volume.
- Mute the ringtone of an incoming call.

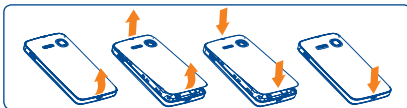
#### **Side key**

- Press: Take a picture in Camera mode.
- Press and hold: Access Camera.

## **1.2 Getting started**

### **1.2.1 Set-up**

#### **Removing or installing the back cover**



#### **Inserting or removing the SIM card**

You must insert your SIM card to make phone calls. Please power off your phone and remove battery before inserting or removing the SIM card.

#### **ONE TOUCH 4030A**



#### **ONE TOUCH 4030E**



Place the SIM card with the chip facing downwards and slide it into its housing. Make sure that it is correctly inserted. To remove the card, press and slide it out.

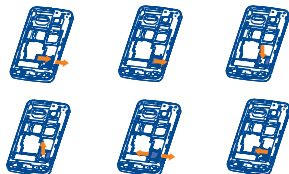
### Installing or removing the battery

Please power off your phone before removing the battery.



- Insert and click the battery into place, then close the phone cover.
- Unclip the cover, then remove the battery.

### Installing and removing the microSD card



Insert the external microSD card into the slot with the gold contact facing down. To remove the external microSD card, gently press and slide it out.



Before removing the microSD card, you should ensure the phone is off, to protect it from corruption or damage. In addition, regularly removing or inserting the SD card may cause the phone to restart.

### Charging the battery



Connect the battery charger to your phone, then the LED light will be on.



The charging status bar will not float if your battery is extensively consumed. To reduce power consumption and energy waste, when battery is fully charged, disconnect your charger from the plug; switch off Wi-Fi, GPS, Bluetooth or background-running applications when not in use; reduce the backlight time, etc.

### 1.2.2 Power on your phone

Hold down the **Power** key until the phone powers on. It will take some seconds before the screen lights up.

#### Set up your phone for the first time

The first time you power on the phone, you should set following options: language, date & time, Google account, Input method, etc.

### 1.2.3 Power off your phone

Hold down the **Power** key from the Home screen until the Phone options appear, select **Power off**.

### 1.3 Home screen

You can bring all the items (applications, shortcuts, folders and widgets) you love or use most frequently to your Home screen for quick access. Touch the **Home** key to switch to Home screen.



#### **Status bar**

- Status/Notification indicators
- Touch and drag down to open the notification panel.

#### **Search bar**

- Touch to enter text search screen.
- Touch to enter voice search screen.

Touch an icon to open an application, folder, etc.

#### **Favorite tray applications**

- Touch to enter the application.
- Touch and hold to move or change applications.

#### **Application tab**

- Touch to open main menu.



Home screen is provided in an extended format to allow more space for adding applications, shortcuts etc. Slide the Home screen horizontally left and right to get a complete view of the Home screen.

### 1.3.1 Using the touchscreen

#### Touch



To access an application, touch it with your finger.

#### Touch and Hold



Touch and hold the home screen to access the available options for setting the wallpaper.

#### Drag



Place your finger on any item to drag it to another location.

#### Slide/Swipe



Slide the screen to scroll up and down the applications, images, web pages... at your convenience.

#### Flick



Similar to swiping, but flicking makes it move quicker.

#### Pinch/Spread



Place your fingers of one hand on the screen surface and draw them apart or together to scale an element on the screen.

#### Rotate



Automatically change the screen orientation from portrait to landscape by turning the phone sideways to have a better view.

### 1.3.2 Status bar

From status bar, you can view both phone status (to the right side) and notification information (to the left side).

#### Status icons

For dual SIM model, status icons referring to either SIM1 or SIM2 will be identified by a colour which you have defined<sup>(1)</sup>.

	GPRS connected		GPS is on
	GPRS in use		Receiving location data from GPS
	EDGE connected		Speakerphone is on
	EDGE in use		Roaming
	3G connected		No signal
	3G in use		Vibrate mode
	HSPA (3G+) connected		Ringer is silenced
	HSPA (3G+) in use		Phone microphone is mute
	Wi-Fi is on		No charge in battery
	Connected to a Wi-Fi network		Battery is very low
	Bluetooth is on		Battery is low
	Connected to a Bluetooth device		Battery is partially drained
	Airplane mode		Battery is full
	Alarm is set		Battery is charging
	Signal strength		Headset connected

<sup>(1)</sup> ONE TOUCH 4030E only.

