



one touch | 6033A

Quick Start Guide

Thank you for buying Alcatel ONE TOUCH 6033A. We hope you will enjoy your high-quality mobile communication experience.

Important:

Your phone is a unibody device, so the back cover and battery are not removable.

If your phone isn't working normally, try to restart it by pressing and holding the Power key for at least 7 seconds until the startup screen appears.

If your phone develops a serious error and can't be restored by restarting it, you may need to restore factory settings by pressing and holding the Power key and Volume up key until the startup screen appears. Press the Volume up/down key to select "factory reset" in the system recovery menu and finally press the Power key to confirm.

Note: Please take care when performing such operations because they will erase personalized settings and data saved in your phone, such as SMS, Contacts, Music, etc.

For more information about how to use the cellphone, please go to www.alcatelonetouch.com to download complete user manual. Also on our website you can find helpful FAQs, realize software upgrade, etc.

ALCATEL **onetouch**

English - CJB32TIALAAA

1



Table of contents

1	Your mobile	3
2	Text input	14
3	Phone call	15
4	People	17
5	Messaging.....	18
6	Email	19
7	Getting connected	20
8	Locate my location using GPS satellites	23
9	Data backup	23
10	Factory data reset	24
11	Applications & Internal storage.....	24
12	Making the most of your phone.....	25
	Safety and use.....	27
	General information	34
	Alcatel Mobile Phones Limited Warranty	35
	Troubleshooting.....	36

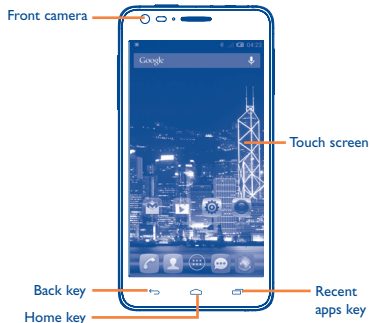
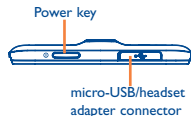


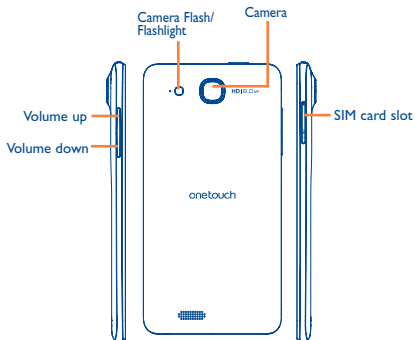
PROTECT YOUR HEARING

To prevent possible hearing damage, do not listen at high volume levels for long periods. Exercise caution when holding your device near your ear while the loudspeaker is in use.

Your mobile

1.1 Keys and connectors





Recent apps key

- Open a list of thumbnail images of apps you've worked with recently. Touch it to open an app. Swipe it left or right to remove a thumbnail from the list.
- Touch and hold: As **Menu** key, touch and hold it to access **Wallpaper**, **Manage applications** and **Settings**.



Home key

- While on any application or screen, touch to return to the Home screen.



Back key

- Touch to go back to the previous screen, or to close a dialog box, options menu, the notification panel, etc.

These keys are visible when the screen lights up.



Power key

- Press: Lock the screen/Light up the screen
- Press and hold: Show the pop-up menu to select from **Ringer mode**/**Airplane mode**/**Power off**/**Quick start**/**Restart**
Press and hold: **Power on**
- Press and hold **Power** key and **Volume down** key to capture a screenshot.
- Press to mute the ringtone when there's an incoming call.
- Press to end the current conversation during a call.
- Press for more than 7 seconds to restart the phone when it is dead.



Volume keys

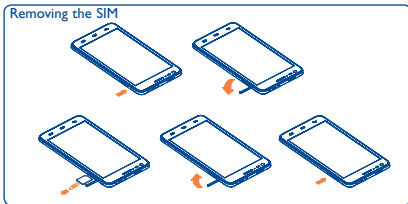
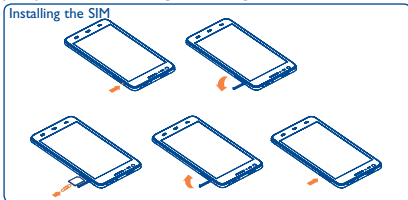
- Under call mode, adjust the earpiece or headset volume.
- In **Music/Video/Streaming** mode, adjust the media volume.
- In general mode, adjust the ring tone volume.
- Mute the ringtone of an incoming call.
- In **Camera** mode, using it as the capture key allows you to take a photo and start or stop recording a video.
- Press to light up the screen when it dims during a call.

1.2 Getting started

1.2.1 Set-up

Inserting or removing the SIM card

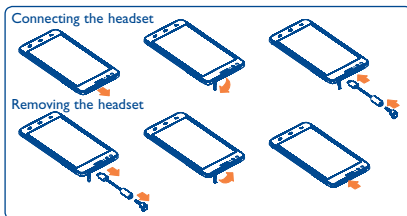
You must insert your SIM card to make phone calls. Please power off your phone before inserting or removing the SIM card.



Insert the SIM card into the slot with the chip facing downwards until it is locked. To remove it, gently push the SIM card until it is unlocked.

Connecting or removing the headset

You must plug the headset adapter into your phone before connecting the headset.



To connect the headset, plug the headset adapter into the micro-USB/headset adapter connector of your phone, then plug the headset into the adapter jack.

To remove the headset, unplug the headset and the adapter.

Charging the battery



Connect the battery charger to your phone and outlet respectively.



The charging status bar will not float if your battery is extensively consumed. To reduce power consumption and energy waste, when battery is fully charged, disconnect your charger from the plug; switch off Wi-Fi, GPS, Bluetooth or background-running applications when not in use; reduce the backlight time, etc.



1.2.2 Power on your phone

Hold down the **Power** key until the phone powers on. It will take some seconds before the screen lights up.

Set up your phone for the first time

The first time you power on the phone, you should set following options: language, date & time, Google account, Google location, etc.

If you power on your phone with no SIM card inserted, you will see a screen giving you the option to connect to a Wi-Fi network to sign into your Google account and to use some features.

1.2.3 Power off your phone

Hold down the **Power** key from the Home screen until the Phone options appear, select **Power off**.

1.3 Home screen

You can bring all the items (applications, shortcuts, folders and widgets) you love or use most frequently to your Home screen for quick access. Touch the **Home** key to switch to Home screen.



Status bar

- Status/Notification indicators
- Touch and drag down to open the notification panel.

Search bar

- Touch  to enter text search screen.
- Touch  to enter voice search screen.

Favorite tray applications

- Touch to enter the application.
- Touch and hold to move or change applications.
- Touch to open main menu.

Home screen is provided in an extended format to allow more space for adding applications, shortcuts etc. Slide the Home screen horizontally left and right to get a complete view of the Home screen. The white short line at the lower part of the screen indicates which screen you are viewing.

1.3.1 Using the touchscreen

Touch



To access an application, touch it with your finger.

Touch and Hold



Touch and hold the home screen to access the available options for setting the wallpaper.

Drag



Place your finger on any item to drag it to another location.

Slide/Swipe



Slide the screen to scroll up and down the applications, images, web pages... at your convenience.

Flick



Similar to swiping, but flicking makes it move quicker.

Pinch/Spread



Place your fingers of one hand on the screen surface and draw them apart or together to scale an element on the screen.

Rotate



Automatically change the screen orientation from portrait to landscape by turning the phone sideways to have a better view.

1.3.2 Status bar

From status bar, you can view both phone status (to the right side) and notification information (to the left side).



Status icons

	GPRS connected		Receiving location data from GPS
	GPRS in use		Roaming
	EDGE connected		No SIM card inserted
	EDGE in use		Vibrate mode
	3G connected		Ringer is silenced
	3G in use		Phone microphone is mute
	HSPA (3G+) connected		Battery is very low
	HSPA (3G+) in use		Battery is low
	Connected to a Wi-Fi network		Battery is partially drained
	Bluetooth is on		Battery is full
	Connected to a Bluetooth device		Battery is charging
	Airplane mode		Headset connected
	Alarm is set		No signal (gray)
	GPS is on		Signal strength (blue)

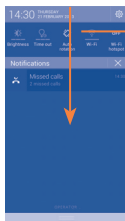
Notification icons

	New text or multimedia message		Missed call
	Problem with SMS or MMS delivery		Call on hold
	New Google Talk message		Call forwarding is on
	New voicemail		Uploading data
	Upcoming event		Downloading data
	Data is synchronizing		Download finished
	Song is playing		Select input method
	Screenshot error		An open Wi-Fi network is available
	USB tethering is on		Phone is connected via USB cable
	Portable Wi-Fi hotspot is on		Radio is on
	Screenshot captured		System update available
	Carrier data use threshold approaching or exceeded		Connected to VPN
	Call in progress		Disconnected from VPN
	Call in progress using Bluetooth headset		



Notification panel


Touch and drag down the Status bar to open the notification panel. Touch and drag up to close it. From the Notification panel, you can open items and other reminders indicated by notification icons or view wireless service information.



Quick settings bar

- Touch to enable/disable functions or change modes.
- Slide left and right to view more.

Touch one notification and slide it sideways to delete it.

Touch the icon  to clear all event-based notifications (other ongoing notifications will remain).

Touch the Settings icon  to access **Settings**.

1.3.3 Search bar


The phone provides a Search function which can be used to locate information within applications, the phone or the web.

1.3.4 Lock/Unlock your screen

To protect your phone and privacy, you can lock the phone screen by creating a variety of patterns, PIN or password etc.

1.3.5 Personalize your Home screen

Add

Touch the application tab , touch and hold an application or a widget to activate the Move mode, and drag the item to any Home screen as you prefer.

Reposition

Touch and hold the item to be repositioned to activate the Move mode, drag the item to the desired position and then release. You can move items both on the Home screen and the Favorite tray. Hold the icon on the left or right edge of the screen to drag the item to another Home screen.

Remove

Touch and hold the item to be removed to activate the Move mode, drag the item up to the top of **Remove** icon, and release after the item turns red.

Create folders

To improve the organization of items (shortcuts or applications) on the Home screen and the Favorite tray, you can add them to a folder by stacking one item on top of another. To rename a folder, open it, touch the folder's title bar to input the new name.

Wallpaper customization

Touch and hold an empty area or touch **Settings**!Display, then touch **Wallpaper** on the Home screen to customize wallpaper.

1.3.6 Application tab

Touch  from the Home screen to enter applications list.

To return to the Home screen, touch the **Home** key.

Consult recently-used applications

To consult recently-used applications, you can touch the **Recent apps** key. Touch a thumbnail in the window to open the related application. Touch one thumbnail and slide it sideways to delete it.






1.3.7 Volume adjustment

You can set ringer, media and phone ringtone volume to your preference by pressing **Volume up/down** key or touching **Settings\Audio profiles**.

1.4 Applications and widgets list

The list contains all pre-embedded and newly installed applications and widgets.


To access the list, touch  from the Home screen. To return to the Home screen, touch the **Home** key or the **Back** key.

Touch the icon  to access the Google Play Store.

2 Text input

2.1 Using Onscreen Keyboard

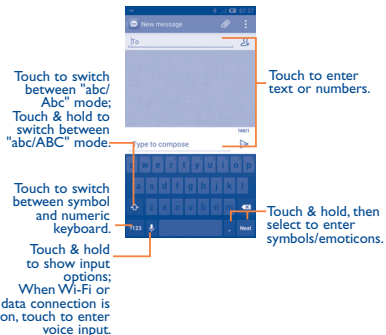
Onscreen Keyboard settings

Touch application tab from the home screen, select **Settings\Language & input**, touch the Settings icon  on the right of **Android keyboard**, a series of settings are available for your selection.

Adjust the Onscreen Keyboard orientation






Turn the phone sideways or upright to adjust the Onscreen Keyboard orientation. You can also adjust it by changing the settings (Touch **Settings\Display\Orientation**).

2.1.1 Android keyboard



2.2 Text editing

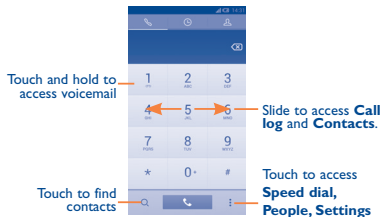
You can edit the text you have entered.

- Touch and hold or double-tap within the text you would like to edit.
- Drag the tap to change the high-lighted selection.
- Following options will show: **Select all** , **Cut** , **Copy**  and **Paste** .
- Touch the icon  to confirm.

3 Phone call

3.1 Placing a call

You can easily launch a call using **Phone**. Touch Application tab from the Home screen and select **Phone**.



Enter the desired number from the keyboard directly or select a contact from **Contacts** or **Call log** by sliding or touching tabs, then touch to place the call.

The number you entered can be saved to **Contacts** by touching and touching **Add to Contacts**.

If you make a mistake, you can delete the incorrect digits by touching .

To hang up a call, touch or the **Power** key.

3.2 Answering or rejecting a call



When you receive a call

- Slide the icon rightward to answer;
- Slide the icon leftward to reject;

- Slide the icon upward to reject the call by sending a preset message.

To mute the incoming calls, press the **Volume up/down** key or turn the phone face down if **Turn over to mute** is activated. To activate, touch **Settings****|Gestures****|Turn over to mute** or touch **Phone****Settings****|Other settings****|Turn over to mute**.

3.3 Consulting your call memory

You can access your call memory by touching from the Dial screen to view call history in categories of Incoming calls, Outgoing calls, and Missed calls.

3.4 Speed dial settings

You can access this setting screen by touching and **Speed dial** on Dial screen, then select contacts to define 2-9 screen keys as a speed dialer.

4 People

You can view and create contacts on your phone and synchronize these with your Gmail contacts or other applications on the web or on your phone.

4.1 Adding a contact

Touch **Application** tab on the Home screen, select **People** app, then touch the icon in the contact list to create a new contact.

4.2 Importing, exporting and sharing contacts

From **Contacts** screen, touch to open options menu, touch **Import/Export**, then select to import/export contacts from/to SIM card, Phone, Phone storage, Accounts, etc.





To import/export a single contact from/to SIM card, choose an account and target SIM card, select the contact you want to import/export, and touch the icon to confirm.

To import/export all contacts from/to SIM card, choose an account and target SIM card, select and touch the icon to confirm.

You can share a single contact or contacts with others by sending the contact's vCard to them via Bluetooth, Gmail, etc.

Touch a contact you want to share, touch and **Share** from contact details screen, then select the application to perform this action.

4.3 Synchronizing contacts in multiple accounts

Contacts, data or other information can be synchronized from multiple accounts, depending on the applications installed on your phone.

5 Messaging.....

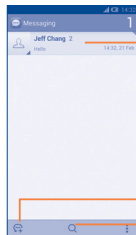
You can create, edit and receive SMS and MMS with this phone. To access this feature, touch Application tab from the Home screen, then select **Messaging**.



All messages you receive or send out can be saved in phone memory or SIM card. To consult the SMS messages stored in SIM card, touch from Messaging screen, then touch **Settings|Manage SIM messages**.

5.1 Write message

On message list screen, touch the new message icon to write text/multimedia messages.



- Touch to view the whole message thread.
- Touch & hold to activate the delete mode. Touch to choose the message(s) you want to delete, and touch the trash bin to confirm.
- Touch to create a new message
- Touch to search in all messages

Sending a text message

Enter the mobile phone number of the recipient on **To** bar or touch to add recipients, touch **Type to compose** bar to enter the text of the message. When finished, touch to send the text message.



An SMS of more than 160 characters will be charged as several SMS. Specific letters (accent) will also increase the size of the SMS, this may cause multiple SMS to be sent to your recipient.

Sending a multimedia message

MMS enables you to send video clips, images, photos, animations, slides and audio to other compatible phones and e-mail addresses.

An SMS will be converted to MMS automatically when media files (image, video, audio, slides, etc.) are attached or Subject or email addresses are added.

6 Email

Besides your Gmail account, you can also set-up external POP3 or IMAP email accounts in your phone.

To access this function, touch Application tab from Home screen, then select **Email**.

An email wizard will guide you through the steps to set-up an email account.





- Enter the email address and password of the account you want to set-up.
- Touch **Next**. If the account you entered is not provided by your service provider in the phone, you will be prompted to go to the email account settings screen to enter settings manually. Or you can touch **Manual setup** to directly enter the incoming and outgoing settings for the email account you are setting up.
- Enter the account name and display name in outgoing emails.
- To add another email account, you can touch and **Settings**. Touch **Add account** on the right of the title to create.

To create and send emails

- Touch the icon from Inbox screen.
- Enter recipient(s) email address(es) in **To** field.
- If necessary, touch and touch **Add Cc/Bcc** to add a copy or a blind copy to the message.
- Enter the subject and the content of the message.
- Touch , touch **Attach file** to add an attachment.
- Finally, touch to send.
- If you do not want to send the mail right away, you can touch and **Save draft** or touch **Back** key to save a copy.

7 Getting connected.....

To connect to the Internet with this phone, you can use GPRS/EDGE/3G networks or Wi-Fi, whichever is most convenient.

7.1 Connecting to the Internet

7.1.1 GPRS/EDGE/3G

The first time you turn on your phone with SIM card inserted, it will automatically configure network service: GPRS, EDGE or 3G. If the network is not connected, you can touch on notification panel.

To check the network connection you are using, touch Application tab on the Home screen, then touch **Settings****More...Mobile networks****Access Point Names** or **Network operators**.

7.1.2 Wi-Fi

Using Wi-Fi, you can connect to the Internet when your phone is within range of a wireless network. Wi-Fi can be used on the phone even without a SIM card inserted.

To turn Wi-Fi on and connect to a wireless network

- Touch on notification panel to get to **Settings**.
- Touch the switch beside Wi-Fi to turn on/off Wi-Fi.
- Touch **Wi-Fi**, detailed information of all detected Wi-Fi networks is displayed in the Wi-Fi networks section.
- Touch a Wi-Fi network to connect to it. If the network you selected is secured, you are required to enter a password or other credentials (contact network operator for details). When finished, touch **Connect**.

7.2 Browser.....

Using Browser, you can enjoy surfing the Web.

To access this function, touch Application tab from Home screen, then touch **Browser**.

To go to a web page

On Browser screen, touch the URL box at the top, enter the address of the web page, then touch to confirm.

7.3 Connecting to a computer

With the USB cable, you can transfer media files and other files between internal storage and computer.

Before using MTP or PTP you should firstly mark **USB debugging** via **Settings****Development****USB debugging**.

To connect your phone to the computer:

- Use the USB cable that came with your phone to connect the phone to a USB port on your computer. You will receive a notification that the USB is connected.
- If you use MTP or PTP, your phone will be automatically connected.



For the operating system Windows XP or lower, you should download and install Windows Media Player 11 on your computer from the following link: <http://windows.microsoft.com/zh-CN/windows/download-windows-media-player>.

To locate the data you have transferred or downloaded in the internal storage:

- Touch Application tab from the Home screen to open the applications list.
- Touch **File Manager**.

All data you have downloaded is stored in **File Manager**, where you can view media files (videos, photos, music and others), rename files, install applications into your phone, etc.

7.4 Sharing your phone's mobile data connection

You can share your phone's mobile data connection with a single computer via a USB cable (USB tethering) or with up to eight devices at once by turning your phone into a portable Wi-Fi hotspot.

To turn on USB tethering or Portable Wi-Fi hotspot

- Touch  on notification panel to get to **Settings**.
- Touch **More...** | **Tethering & portable hotspot**.
- Mark the checkbox of **USB tethering** or **Portable Wi-Fi hotspot** to activate this function.



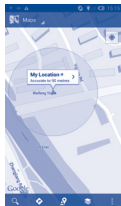
These functions may incur additional network charges from your network operator. Extra fees may also be charged in roaming areas. You can check data usage by touching **Settings** | **Data usage**.

8 Locate my location using GPS satellites

To activate your phone's global positioning system (GPS) satellite receiver:

- Touch  on notification panel to get to **Settings**.
- Touch **Location services** | **GPS satellites**
- Mark the checkbox

Find your location by opening Maps:



Use your phone's GPS satellite receiver to pinpoint your location within an accuracy as close as several meters ("street level"). The process of accessing the GPS satellite and setting your phone's precise location for the first time will require up to 5 minutes. You will need to stand in a place with a clear view of the sky and avoid moving. After this, GPS will only need 20-40 seconds to identify your precise location. Then you can start the navigation to find the target location.

9 Data backup

This phone enables you to back up your phone's settings and other application data to Google Servers, with your Google Account.

If you replace your phone, the settings and data you've backed up are restored onto the new phone the first time you sign in with your Google Account.

To activate this function:

- Touch  on notification panel to get to **Settings**.
- Touch **Backup and reset** | **Back up my data** to mark the checkbox.



Activated this function, a wide variety of settings and data are backed up, including your Wi-Fi passwords, bookmarks, a list of the applications you've installed, the words you've added to the dictionary used by the onscreen keyboard, and most of the settings that you configure with the Settings application. If you deactivated this option, you stop backing up your settings, and any existing backups are deleted from Google Servers.

10 Factory data reset

To activate factory data reset:

- Touch  on notification panel to get to **Settings**.
- Touch **Backup and reset** **Factory data reset**
- Touch **Reset phone** **Erase everything**

Phone reset will erase all of your personal data from internal phone storage, including information about your Google Account, any other accounts, your system and application settings, and any downloaded applications. Resetting the phone does not erase any system software updates you've downloaded. If you reset the phone in this way, you're prompted to re-enter the same kind of information as when you first started Android.

When you are unable to power on your cellphone, there is another way to perform a factory data reset by pressing the **Volume up** key and the **Power** key at same time until the screen lights up.

11 Applications & Internal storage ...

11.1 Applications

With this phone, some built-in Google applications and other third party applications are available for your convenience.

With the built-in applications, you can

- Communicate with friends

- Exchange messages or emails with friends
- Track your location, view traffic situations, search for locations and get navigation information to your destination
- Download more applications from Google Play Store and more.

For more information about these applications, please check user manual online: www.alcatelonetouch.com.

11.2 Internal storage

Touch **Settings** **Storage** to display the amount of internal phone storage used by the operating system, its components, applications (including those you downloaded), permanent and temporary data.

All personal music, pictures, applications, and files will be saved in internal phone storage.



If a warning message comes up saying that phone memory is limited, you are required to free up space by deleting some unwanted applications, downloaded files, etc.

12 Making the most of your phone

You can download software upgrade for free from the website (www.alcatelonetouch.com).

12.1 ONE TOUCH Manager

ONE TOUCH Manager includes:

- **Contacts**
It allows you to back up contact entries so that you don't have to worry about losing, breaking, switching phones or changing service providers.
- **Messages**
It frees you from painstakingly inputting text on the keypads. All of your messages are easily accessible and well-organized.





• Photos

It allows you to easily import photos from PC or the handset and organize them in different albums for better management.

• Videos

It allows you to insert video files from PC for playback and then upload to handset folder.

• Music

It allows you to quickly search your favorites in PC, manage the ultimate Library, and enjoy the easiest digital jukebox in your own mobile way.

• Application

It allows you to import downloaded mobile applications and have them installed into your handset upon synchronization.

• File

It allows you to organize handset files with just a few clicks and then the files on the handset can be arranged where you want them.

• Sync

It allows you to synchronize the Contacts and Calendar in Outlook/ Outlook Express and handset.

Supported Operating Systems

Windows XP/Vista/Windows 7.

12.2 Upgrade

You can use ONE TOUCH Upgrade tool or FOTA Upgrade tool to update your phone's software.

12.2.1 ONE TOUCH Upgrade


Download ONE TOUCH Upgrade from ALCATEL ONE TOUCH website (www.alcatelonetouch.com) and install it on your PC. Launch the tool and update your phone by following the step by step instructions (refer to the User Guide provided together with the tool). Your phone's software will now have the latest software.




All personal information will be permanently lost following the update process. We recommend you backup your personal data using ONE TOUCH Manager before upgrading.

12.2.2 FOTA Upgrade

Using FOTA Upgrade tool you can update your phone's software.

To access **System Updates**, please open notification panel and touch , then press **About phone** **System updates** and **Settings>About phone** **System updates**. Or you can directly touch **System Updates** on application list directly. Touch **Check for updates**, and the phone will search for the latest software. If you want to update the system, please touch the button **Download**, after it's done please touch **Install** to complete the upgrade. Now your phone's software will have the latest version.

You should turn on data connection before searching for updates. Settings for auto-check intervals and reminders about upgrades are also available once you restart the phone.

If you have chosen auto-check, when the system discovers the new version, the icon  will appear in the status bar. Touch the notification to access the **System Updates** directly.

Safety and use.....

We recommend that you read this chapter carefully before using your mobile phone. The manufacturer disclaims any liability for damage, which may result as a consequence of improper use or use contrary to the instructions contained herein.

• TRAFFIC SAFETY:

Given that studies show that using a mobile phone while driving a vehicle constitutes a real risk, even when the hands-free kit is used (car kit, headset...), drivers are requested to refrain from using their mobile phone when the vehicle is not parked. Check the laws and regulations on the use of wireless mobile phones and their accessories in the areas where you drive. Always obey them. The use of these devices may be prohibited or restricted in certain areas.

When driving, do not use your mobile phone and headphone to listen to music or to the radio. Using a headphone can be dangerous and forbidden in some areas.

When switched on, your mobile phone emits electromagnetic waves that can interfere with the vehicle's electronic systems such as ABS anti-lock brakes or airbags. To ensure that there is no problem:

- do not place your mobile phone on top of the dashboard or within an airbag deployment area,
- check with your car dealer or the car manufacturer to make sure that the car's electronic devices are shielded from mobile phone RF energy.





• CONDITIONS OF USE:

You are advised to switch off the mobile phone from time to time to optimize its performance.

Remember to abide by local authority rules of mobile phone use on aircrafts.

Operational Warnings: Obey all posted signs when using mobile devices in public areas.

Follow Instructions to Avoid Interference Problems: Turn off your mobile device in any location where posted notices instruct you to do so. In an aircraft, turn off your mobile device whenever instructed to do so by airline staff. If your mobile device offers an airplane mode or similar feature, consult airline staff about using it in flight.

Switch the mobile phone off when you are in health care facilities, except in designated areas. As with many other types of equipment now in regular use, mobile phones can interfere with other electrical or electronic devices, or equipment using radio frequency.

Switch the mobile phone off when you are near gas or flammable liquids. Strictly obey all signs and instructions posted in a fuel depot, gas station, or chemical plant, or in any potentially explosive atmosphere.

When the mobile phone is switched on, it should be kept at least 15 cm from any medical device such as a pacemaker, a hearing aid or insulin pump. In particular when using the mobile phone you should hold it against the ear on the opposite side to the device, if any.

Read and follow the directions from the manufacturer of your implantable medical device. If you have any questions about using your mobile device with your implantable medical device, consult your healthcare provider.

To avoid hearing impairment, answer the call before holding your mobile phone to your ear. Also move the handset away from your ear while using the "hands-free" option because the amplified volume might cause hearing damage.

It is recommended to have proper supervision while small children use your mobile phone.

When replacing the cover please note that your mobile phone may contain substances that could create an allergic reaction.

Always handle your mobile phone with care and keep it in a clean and dust-free place.

Do not allow your mobile phone to be exposed to adverse weather or environmental conditions (moisture, humidity, rain, infiltration of liquids, dust, sea air, etc.). The manufacturer's recommended operating temperature range is -10°C (14°F) to +55°C (131°F) (the max value depends on device, materials and housing paint/texture).

Over 55°C (131°F) the legibility of the mobile phone's display may be impaired, though this is temporary and not serious.

Do not open or attempt to repair your mobile phone yourself.

Do not drop, throw or try to bend your mobile phone.

Do not use the mobile phone if the glass made screen, is damaged, cracked or broken to avoid any injury.

Do not paint it.

Use only batteries, battery chargers, and accessories which are recommended by TCT Mobile Limited and its affiliates and are compatible with your mobile phone model. TCT Mobile Limited and its affiliates disclaim any liability for damage caused by the use of other chargers or batteries.

Your mobile phone should not be disposed of in a municipal waste. Please check local regulations for disposal of electronic products.

Remember to make back-up copies or keep a written record of all important information stored in your mobile phone.

Some people may suffer epileptic seizures or blackouts when exposed to flashing lights, or when playing video games. These seizures or blackouts may occur even if a person never had a previous seizure or blackout. If you have experienced seizures or blackouts, or if you have a family history of such occurrences, please consult your doctor before playing video games on your mobile phone or enabling a flashing-lights feature on your mobile phone. Parents should monitor their children's use of video games or other features that incorporate flashing lights on the mobile phones. All persons should discontinue use and consult a doctor if any of the following symptoms occur: convulsion, eye or muscle twitching, loss of awareness, involuntary movements, or disorientation. To limit the likelihood of such symptoms, please take the following safety precautions:

- Play at the farthest distance possible from the screen.
- When you play games on your mobile phone, you may experience occasional discomfort in your hands, arms, shoulders, neck, or other parts of your body. Follow these instructions to avoid problems such as tendonitis, carpal tunnel syndrome, or other musculoskeletal disorders:
- Take a minimum of a 15-minute break every hour of game playing.
- If your hands, wrists, or arms become tired or sore while playing, stop and rest for several hours before playing again.
- If you continue to have sore hands, wrists, or arms during or after playing, stop the game and see a doctor.



PROTECT YOUR HEARING

To prevent possible hearing damage, do not listen at high volume levels for long periods. Exercise caution when holding your device near your ear while the loudspeaker is in use.



• **PRIVACY:**

Please note that you must respect the laws and regulations in force in your jurisdiction or other jurisdiction(s) where you will use your mobile phone regarding taking photographs and recording sounds with your mobile phone. Pursuant to such laws and regulations, it may be strictly forbidden to take photographs and/or to record the voices of other people or any of their personal attributes, and reproduce or distribute them, as this may be considered to be an invasion of privacy.

It is the user's sole responsibility to ensure that prior authorization be obtained, if necessary, in order to record private or confidential conversations or take a photograph of another person; the manufacturer, the seller or vendor of your mobile phone (including the operator) disclaim any liability which may result from the improper use of the mobile phone.

• **BATTERY AND ACCESSORIES:**

Before removing the battery from your mobile phone, please make sure that the mobile phone is switched off.

Observe the following precautions for battery use:

- Do not attempt to open the battery (due to the risk of toxic fumes and burns).
- Do not puncture, disassemble or cause a short-circuit in a battery.
- Do not burn or dispose of a used battery in the garbage or store it at temperatures above 60°C (140°F).

Batteries must be disposed of in accordance with locally applicable environmental regulations. Only use the battery for the purpose for which it was designed. Never use damaged batteries or those not recommended by TCT Mobile Limited and/or its affiliates.



This symbol on your mobile phone, the battery and the accessories means that these products must be taken to collection points at the end of their life:

- Municipal waste disposal centers with specific bins for these items of equipment
- Collection bins at points of sale.

They will then be recycled, preventing substances being disposed of in the environment, so that their components can be reused.

In European Union countries:

These collection points are accessible free of charge. All products with this sign must be brought to these collection points.

In non European Union jurisdictions:

Items of equipment with this symbol are not to be thrown into ordinary bins if your jurisdiction or your region has suitable recycling and collection facilities; instead they are to be taken to collection points for them to be recycled.

In the United States you may learn more about CTIA's Recycling Program at www.recyclewirelessphones.com

CAUTION: RISK OF EXPLOSION IF BATTERY IS REPLACED BY AN INCORRECT TYPE. DISPOSE OF USED BATTERIES ACCORDING TO THE INSTRUCTIONS



• **CHARGERS**

Home A.C./ Travel chargers will operate within the temperature range of: 0°C (32°F) to 40°C (104°F).

The chargers designed for your mobile phone meet with the standard for safety of information technology equipment and office equipment use. Due to different applicable electrical specifications, a charger you purchased in one jurisdiction may not work in another jurisdiction. They should be used for this purpose only.

Characteristics of power supply (depending on the country):

Travel charger: Input: 100-240 V, 50/60 Hz, 200 mA

Output: 5V, 1A

Battery: Lithium 1800 mAh

• **RADIO WAVES:**

THIS MOBILE PHONE MEETS THE GOVERNMENT'S REQUIREMENTS FOR EXPOSURE TO RADIO WAVES.

Your mobile phone is a radio transmitter and receiver. It is designed and manufactured not to exceed the emission limits for exposure to radio-frequency (RF) energy. These limits are part of comprehensive guidelines and establish permitted levels of RF energy for the general population. The guidelines are based on standards that were developed by independent scientific organizations through periodic and thorough evaluation of scientific studies. These guidelines include a substantial safety margin designed to ensure the safety of all persons, regardless of age and health.

The exposure standard for mobile phones employs a unit of measurement known as the Specific Absorption Rate, or SAR. The SAR limit set by public authorities such as the Federal Communications Commission of the US Government (FCC), or by Industry Canada, is 1.6 W/kg averaged over 1 gram of body tissue. Tests for SAR are conducted using standard operating positions with the mobile phone transmitting at its highest certified power level in all tested frequency bands.

Although the SAR is determined at the highest certified power level, the actual SAR level of the mobile phone while operating can be well below the maximum value. This is because the mobile phone is designed to operate at multiple power levels so as to use only the power required to reach the network. In general, the closer you are to a wireless base station antenna, the lower the power output of the mobile phone. Before a mobile phone model is available for sale to the public, compliance with national regulations and standards must be shown. The highest SAR value for this model mobile phone when tested is 0.76 W/Kg for use at the ear and 1.37 W/Kg for use close to the body. While there may be differences between the SAR levels of various mobile phones and at various positions, they all meet the government requirement for RF exposure. For body-worn operation, the mobile phone meets FCC RF exposure guidelines provided that it is used with a non-metallic accessory with the handset at least 10 mm from the body. Use of other accessories may not ensure compliance with FCC RF exposure guidelines.





Additional information on SAR can be found on the Cellular Telecommunications & Internet Association (CTIA) Web site: <http://www.phonefacts.net>

The World Health Organization (WHO) considers that present scientific information does not indicate the need for any special precautions for use of mobile phones. If individuals are concerned, they might choose to limit their own or their children's RF exposure by limiting the length of calls, or using "hands-free" devices to keep mobile phones away from the head and body. (fact sheet n°193). Additional WHO information about electromagnetic fields and public health are available on the following website: <http://www.who.int/peh-emf>.

Note: This equipment has been tested and found to comply with the limits for a Class B digital device pursuant to part 15 of the FCC Rules. These limits are designed to provide reasonable protection against harmful interference in a residential installation. This equipment generates, uses and can radiate radio frequency energy and, if not installed and used in accordance with the instructions, may cause harmful interference to radio communications. However, there is no guarantee that interference to radio or television reception, which can be determined by turning the equipment off and on, the user is encouraged to try to correct the interference by one or more of the following measures:

- Reorient or relocate the receiving antenna.
 - Increase the separation between the equipment and receiver.
 - Connect the equipment into an outlet on a circuit different from that to which the receiver is connected.
 - Consult the dealer or an experienced radio/TV technician for help.
- Changes or modifications not expressly approved by the party responsible for compliance could void the user's authority to operate the equipment.

For the receiver devices associated with the operation of a licensed radio service (e.g. FM broadcast), they bear the following statement: This device complies with Part 15 of the FCC Rules. Operation is subject to the condition that this device does not cause harmful interference.

For other devices, they bear the following statement: This device complies with Part 15 of the FCC Rules. Operation is subject to the following two conditions:

- (1) this device may not cause harmful interference
- (2) this device must accept any interference received, including interference that may cause undesired operation.

Your mobile phone is equipped with a built-in antenna. For optimal operation, you should avoid touching it or degrading it.

As mobile devices offer a range of functions, they can be used in positions other than against your ear. In such circumstances the device will be compliant with the guidelines when used with headset or usb data cable. If you are using another accessory ensure that whatever product is used is free of any metal and that it positions the mobile phone at least 10 mm away from the body.

• LICENCES



The Bluetooth word mark and logos are owned by the Bluetooth SIG, Inc. and any use of such marks by TCT Mobile Limited and its affiliates is under license. Other trademarks and trade names are those of their respective owners.

ONE TOUCH 6033A Bluetooth QD ID B020261



TouchPal™ and CooTek™ are trademarks of Shanghai HanXiang (CooTek)Information Technology Co., Ltd. and/or its Affiliates.



The Wi-Fi Logo is a certification mark of the Wi-Fi Alliance.

Your device uses non-harmonised frequency and is intended for use in all European countries. The WLAN can be operated in the EU without restriction indoors, but cannot be operated outdoors in France.

Google, the Google logo, Android, the Android logo, Google Search™, Google Maps™, Gmail™, YouTube, Android Market, Google Latitude™ and Google Talk™ are trademarks of Google Inc.

You have purchased a product which uses the open source (<http://opensource.org/>) programs mtd, mdsdofs, netfilter/iptables and inird in object code and other open source programs licensed under the GNU General Public License and Apache License.

We will provide you with a complete copy of the corresponding source codes upon request within a period of three years from the distribution of the product by TCT.

You may download the source codes from <http://sourceforge.net/projects/alcatel/files/>. The provision of the source code is free of charge from internet.





Hearing Aid Compatibility

Your mobile phone is rated: «For Hearing Aid», to assist hearing device users in finding mobile phones that may be compatible with their hearing devices.

This device is HAC M3/T3 compatible. Reference ANSI C63.19-2007 For more information please refer to «Hearing Aid Compatibility with Mobile Phones» leaflet or visit our website <http://www.alcatelonetouch.com>

FCC ID: RAD327

General information

- **Website:** www.alcatelonetouch.com
- **Facebook:** <http://www.facebook.com/alcatelonetouchusa>
- **Twitter:** <http://www.twitter.com/alcatel1touch>
- **Hot Line Number:** In the United States, call 877-702-3444 for technical support.

On our Internet site, you will find our FAQ (Frequently Asked Questions) section. You can also contact us by e-mail to ask any questions you may have.

An electronic version of this user guide is available in English and other languages according to availability on our server: www.alcatelonetouch.com
Your telephone is a transceiver that operates on GSM in quad-band with 850/900/1800/1900 MHz or UMTS in dual band with 850/1900 MHz.

Protection against theft ⁽¹⁾

Your mobile phone is identified by an IMEI (mobile phone serial number) shown on the packaging label and in the product's memory. We recommend that you note the number the first time you use your mobile phone by entering *#06# and keep it in a safe place. It may be requested by the police or your operator if your mobile phone is stolen.

Disclaimer

There may be certain differences between the user manual description and the mobile phone's operation, depending on the software release of your mobile phone or specific operator services.

TCT Mobile shall not be held legally responsible for such differences, if any, nor for their potential consequences, which responsibility shall be borne by the operator exclusively.

⁽¹⁾ Contact your network operator to check service availability.

Alcatel Mobile Phones Limited Warranty

TCT Mobile North America LTD warrants to the original retail purchaser of this wireless device, that should this product or part thereof during normal consumer usage and condition, be proven to be defective in material or workmanship that results in product failure within the first twelve (12) months from the date of purchase as shown on your original sales receipt. Such defect(s) will be repaired or replaced (with new or rebuilt parts) at the company's option without charge for parts or labor directly related to the defect(s). Batteries, power adapters, and other accessories sold as in box items are also warranted against defects and workmanship that results in product failure within the first six (6) months period from the date of purchase as shown on your original sales receipt. Such defect(s) will be repaired or replaced (with new or rebuilt parts) and the company's option without charge for parts or labor directly related to the defect(s).

The limited warranty for your wireless device will be voided if any of the following conditions occur:

- Non-compliance with the instructions for use or installation, or with technical and safety standards applicable in the geographical area where your mobile phone is used;
- Connection to any equipment not supplied or not recommended by TCT Mobile;
- Modification or repair performed by individuals not authorized by TCT Mobile or its affiliates;
- Acts of god such as Inclement weather, lightning, power surges, fire, humidity, infiltration of liquids or foods, chemical products, download of files, crash, high voltage, corrosion, oxidation;
- Removal or altering of the wireless devices event labels or serial numbers (IMEI);
- Damage from exposure to water or other liquids, moisture, humidity, excessive temperatures or extreme environmental conditions, sand, excess dust and any condition outside the operating guidelines;
- Defects in appearance, cosmetic, decorative or structural items such as framing and non-operative parts.

There are no express warranties, whether written, oral or implied, other than this printed limited warranty or the mandatory warranty provided by your jurisdiction. In no event shall TCT Mobile or any of its affiliates be liable for incidental or consequential damages of any nature whatsoever, including but not limited to commercial loss, to the full extent those damages can be disclaimed by law. Some states do not allow the exclusion or limitation of incidental or consequential damages, or limitation of the duration of implied warranties, so the preceding limitations or exclusions may not apply to you.





How to obtain Support: Contact the customer care center by calling (877-702-3444) or going to www.alcatelonetouch.com. We have placed many self-help tools that may help you to isolate the problem and eliminate the need to send your wireless device in for service. In the case that your wireless device is no longer covered by this limited warranty due to time or condition we have other options that you may utilize our out of warranty repair options.

To obtain hardware repairs or replacement within the terms of this warranty, contact TCT Mobile to get an RMA number, include a copy of the original proof of warranty coverage (e.g. original copy of the dated bill of sale, invoice), the consumer's return address, your wireless carrier's name, alternate daytime mobile phone number, and email address with a complete problem description. Only ship the wireless device. Do not ship the SIM card, memory cards, or any other accessories such as the power adapter. You must properly package and ship the wireless device to the repair center.

TCT Mobile is not responsible for wireless devices that do not arrive at the service center. Upon receipt, the service center will verify the warranty conditions, repair, and return your wireless device to the address provided.




PROTECT YOUR HEARING

To prevent possible hearing damage, do not listen at high volume levels for long periods. Exercise caution when holding your device near your ear while the loudspeaker is in use.



Troubleshooting.....

Before contacting the service center, you are advised to follow the instructions below:

- You are advised to fully charge () the battery for optimal operation.
- Avoid storing large amounts of data in your phone as this may affect its performance.
- Use **Factory data reset** and the upgrade tool to perform phone formatting or software upgrading (to reset factory data, hold down the **power** key and the **Volume up** key at the same time). ALL User phone data: contacts, photos, messages and files, downloaded applications will be lost permanently. It is strongly advised to fully backup the phone data and profile via Android Manager before doing formatting and upgrading.

and carry out the following checks:

My phone is frozen or cannot be switched on

- Check the battery power level, charge for at least 20 minutes.
- If it still does not work, please reset the phone using the **Power** key and the **Volume up** key.

My phone has not responded for several minutes

- Restart your phone by pressing and holding the **Power** key.

My phone turns off by itself

- Check that your screen is locked when you are not using your phone, and make sure the **Power** key is not mis-contacted due to unlocked screen.
- Check the battery charge level.

My phone cannot charge properly

- Make sure that your battery is not completely discharged; if the battery power is empty for a long time, it may take around 20 minutes to display the battery charger indicator on the screen.
- Make sure charging is carried out under normal conditions (0°C (32°F) to +40°C (104°F)).
- When abroad, check that the voltage input is compatible.

My phone cannot connect to a network or "No service" is displayed

- Try connecting in another location.
- Verify the network coverage with your operator.
- Check with your operator that your SIM card is valid.
- Try selecting the available network(s) manually
- Try connecting at a later time if the network is overloaded.

My phone cannot connect to the Internet

- Check that the IMEI number (press *#06#) is the same as the one printed on your warranty card or box.
- Make sure that the internet access service of your SIM card is available.
- Check your phone's Internet connecting settings.
- Make sure you are in a place with network coverage.
- Try connecting at a later time or another location.


Invalid SIM card

- Make sure the SIM card has been correctly inserted (see "Inserting or removing the SIM card").
- Make sure the chip on your SIM card is not damaged or scratched.
- Make sure the service of your SIM card is available.





Unable to make outgoing calls

- Make sure you have dialed a valid number and have touched .
- For international calls, check the country and area codes.
- Make sure your phone is connected to a network, and the network is not overloaded or unavailable.
- Check your subscription status with your operator (credit, SIM card valid, etc.).
- Make sure you have not barred outgoing calls.
- Make sure that your phone is not in airplane mode.

Unable to receive incoming calls

- Make sure your phone is switched on and connected to a network (check for overloaded or unavailable network).
- Check your subscription status with your operator (credit, SIM card valid, etc.).
- Make sure you have not forwarded incoming calls.
- Make sure that you have not barred certain calls.
- Make sure that your phone is not in airplane mode.


The caller's name/number does not appear when a call is received

- Check that you have subscribed to this service with your operator.
- Your caller has concealed his/her name or number.

I cannot find my contacts

- Make sure your SIM card is not broken.
- Make sure your SIM card is inserted properly.
- Import all contacts stored in SIM card to phone.

The sound quality of the calls is poor

- You can adjust the volume during a call by pressing the **Volume Up/Down** key.
- Check the network strength .
- Make sure that the receiver, connector or speaker on your phone is clean.

I am unable to use the features described in the manual

- Check with your operator to make sure that your subscription includes this service.
- Make sure this feature does not require an ALCATEL ONE TOUCH accessory.

When I select a number from my contacts, the number cannot be dialed

- Make sure that you have correctly recorded the number in your file.
- Make sure that you have selected the country prefix when calling a foreign country.

I am unable to add a contact in my contacts

- Make sure that your SIM card contacts are not full; delete some files or save the files in the phone contacts (i.e. your professional or personal directories).

My callers are unable to leave messages on my voicemail

- Contact your network operator to check service availability.

I cannot access my voicemail

- Make sure your operator's voicemail number is correctly entered in "Voicemail number".
- Try later if the network is busy.

I am unable to send and receive MMS

- Check your phone memory availability as it might be full.
- Contact your network operator to check service availability and check MMS parameters.
- Verify the server center number or your MMS profile with your operator.
- The server center may be swamped, try again later.

SIM card PIN locked

- Contact your network operator to obtain the PUK code (Personal Unblocking Key).

I am unable to connect my phone to my computer

- Install ALCATEL ONE TOUCH Android Manager.
- Check that your USB driver is installed properly.
- Open the Notification panel to check if the Android Manager Agent has been activated.
- Check that you have marked the checkbox of USB debugging in **Settings** > **Development** > **USB debugging**.
- Check that your computer meets the requirements for ALCATEL ONE TOUCH Android Manager Installation.
- Make sure that you're using the right cable from the box.

I am unable to download new files

- Make sure there is sufficient phone memory for your download.
- Check your subscription status with your operator.





The phone cannot be detected by others via Bluetooth

- Make sure that Bluetooth is turned on and your phone is visible to other users .
- Make sure that the two phones are within Bluetooth's detection range.

How to make your battery last longer

- Make sure you follow the complete charge time (minimum 2.5 hours).
- After a partial charge, the battery level indicator may not be exact. Wait for at least 20 minutes after removing the charger to obtain an exact indication.
- Switch on the backlight upon request.
- Extend the email auto-check interval for as long as possible.
- Update news and weather information on manual demand, or increase their auto-check interval.
- Exit background-running applications if they are not being used for a long time.
- Deactivate Bluetooth, Wi-Fi, or GPS when not in use.

The phone will become warm following prolonged calls, game playing, internet surfing or running other complex applications.

- This heating is a normal consequence of the CPU handling excessive data. Ending above actions will make your phone return to normal temperatures.

ALCATEL is a trademark of Alcatel-Lucent
and is used under license by
TCT Mobile Limited.

© Copyright 2013 TCT Mobile Limited
All rights reserved

TCT Mobile Limited reserves
the right to alter material
or technical specification
without prior notice.

All "Signature" ringtones embedded in this phone have been composed, arranged and mixed by NU TROPIC (Amar Kabouche).

