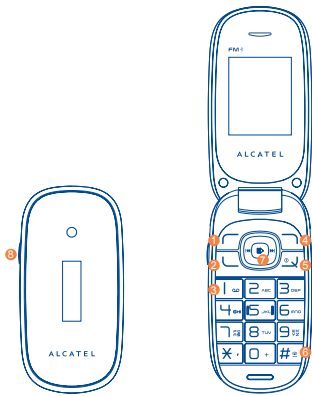


# Quick Start Guide

## Your cellphone .....

For more information about how to use the cellphone, please go to [www.alcatelonetouch.com](http://www.alcatelonetouch.com) to download complete user manual (English version only). Also on our website you can find helpful FAQs. (English version only).



- 1 Left softkey
- 2 Answer/Send call
- 3 Call log
- 4 Activate fake call (press and hold)
- 5 Voicemail (press and hold)
- 6 Right softkey
- 7 Switch on/Switch off End call
- 8 Vibration alert (press and hold)
- 9 Navigation key (1): Menu/Confirm an option if widget bar is hide: Messaging, Contacts, Alarm, Calendar
- 10 Camera

### 1.1 Keys

- Navigation key  
Confirm an option (press the middle of the key)  
Activate music player (press and hold the middle of the key)  
Scroll widget bar (press the right or left of the key)
- Answer  
Send a call  
In idle screen:  
Access call log (Redial) (short keypress)  
Activate fake call (press and hold)  
During MP3 Playing:  
Switch between Headset and speaker (press and hold)
- Switch on/Switch off the cellphone (press and hold)  
End call  
Return to idle screen
- Left softkey
- Right softkey
- Access your voicemail (press and hold)
- In Edit mode:  
- Short keypress: access the language list  
- Press and hold: enter zero

- Camera key: access "Camera" (short keypress)
- In Edit mode:  
- Short keypress: change input methods  
- Press and hold: access the Symbols table
- In idle screen:  
- Short keypress: #  
- Press and hold: activate/deactivate the vibrate mode  
In Edit mode:  
- Short keypress: (space)

### 1.2 Main screen icons (1)

- Battery charge level**
- Vibrate alert:** your cellphone vibrates, but does not ring or beep.
- Bluetooth status (Activated).**
- Bluetooth status (Connected to an audio device).**
- Headset connected.**
- Call forwarding activated:** your calls are forwarded.
- Alarm or appointments programmed.**

(1) The icons and illustrations in this guide are provided for information purposes only.

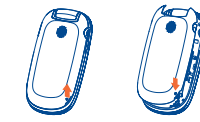
- Level of network reception.**
- Voicemail message arrived.**
- Missed calls.**
- Radio is on.**
- WAP alerts (1).**
- Roaming.**
- SIM card missing.**
- GPRS connection status (Activated).**
- GPRS connecting.**
- Sending a MMS.**
- MMS receiving.**
- Silence mode:** your cellphone does not ring, beep or vibrate with the exception of the alarm.
- SMS unread.**
- MMS unread.**
- Flight mode.**

(1) Depending on your network operator.

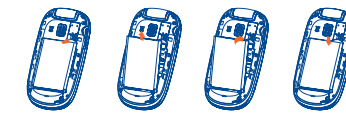
## 2 Getting started .....

### 2.1 Set-up

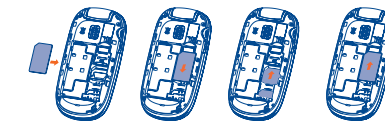
#### Removing and installing the back cover



#### Removing and installing the battery

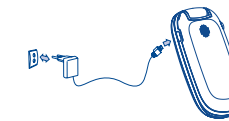


#### Inserting and removing the SIM card



Place the SIM card with the chip facing downwards and slide it into its housing. Make sure that it is correctly inserted. To remove the card, press it and slide it out.

### Charging the battery



Connect the battery charger to your cellphone and mains socket respectively.

- The charging may take about 20 minutes to start if the battery is flat.
- Be careful not to force the plug into the socket.
- Make sure the battery is correctly inserted before connecting the charger.
- The mains socket must be near to the cellphone and easily accessible (avoid electric extension cables).
- When using your cellphone for the first time, charge the battery fully (approximately 3 hours). You are advised to fully charge the battery (100%).
- To reduce power consumption and energy waste, when battery is fully charged, disconnect your charger from the plug; switch off Bluetooth when not in use; reduce the backlight time, etc.

The charge is complete when the animation stops.

### 2.2 Power on your cellphone

Hold down the key until the cellphone powers on.

### 2.3 Power off your cellphone

Hold down the key from the main screen.

## 3 Calls .....

### 3.1 Making a call

Dial the desired number then press the key to place the call. If you make a mistake, you can delete the incorrect digits by pressing the right softkey.

To hang up the call, press the key.

#### Making an emergency call

If your cellphone is covered by the network, dial emergency number and press the key to make an emergency call. This works even without a SIM card and without typing the PIN code.

### 3.2 Calling your voicemail (1)

To access your voicemail, hold down the key.

### 3.3 Receiving a call

When you receive an incoming call, press the key to talk and then hang up using the key.

### 3.4 Available functions during the call

During a call, you can use your directory, your calendar, text messages, etc. without hanging up or dropping the call.

(1) Contact your network operator to check service availability.

## 4 Contacts .....

### 4.1 Consulting your contacts

To access the **contacts** from the main screen, press the key and select the icon from the menu.

### 4.2 Adding a contact

Select the directory in which you wish to add contact, press the **"Options"** softkey, select **"Add contact"**.

## 5 Messaging .....

### 5.1 Create message

From the main menu select **"Messaging"** to create text/multimedia message. You can type a message and you can also modify a predefined message in **Templates** or customize your message by adding pictures, photos, sounds, titles, etc (only available while editing a MMS). While writing a message, select **"Options"** to access all the messaging options. You can save your messages that you send often to **Draft** or **Templates** (MMS only).

Specific letters (accent) will increase the size of the SMS, this may cause multiple SMS to be sent to your recipient.

## 6 Email .....

Your cellphone has an email client with the settings predefined for a few popular email services like – GoogleMail, Windows live, Yahoo, AOL, etc. Besides this, you can set up other POP3 or IMAP4 email accounts that you may be using.

## 7 Opera Mini .....

Not only does Opera Mini give you the full Web experience where you stay in touch with your friends, obtain information, do your online banking etc., but it is also designed to save time by using compressed web pages.

## 8 Facebook .....

Facebook is a social utility that connects people with friends and others who work, study and live around them. It provides a number of features with which users interact, such as Wall, Pokes, etc.

To open an account online, please go to: <http://www.facebook.com/>.

## 9 mTweet .....

Twitter is a social networking and microblogging service that has gained notability and popularity worldwide. This feature enables cellphone users to exchange news updates and ideas with a community in the form of messages or posts. Posts are displayed on the author's profile page and delivered to the author's subscribers or followers.

To open an account online, please go to: <http://twitter.com/>.

## 10 Camera .....

Your cellphone is fitted with a camera for taking photos and shooting videos that you can use in different ways:

- store them in your **"File manager|My creations"**,
- send them in a multimedia message (MMS) to a cellphone or an email address.
- send them directly by Email or Bluetooth.
- customize your main screen.
- select them as incoming call image to a contact in your directory.

## 11 Media .....

### 11.1 Music

Access this feature from the main menu by selecting **"Music"**. You will have full flexibility of managing music both on your cellphone and memory card.

### 11.2 Video

**"My videos"** album contains video clips recorded, received or downloaded.

### 11.3 Radio

Your cellphone is equipped with a radio (1) with RDS functionality. You can use the application as a traditional radio with saved channels or with parallel visual information related to the radio program on the display if you tune to stations that offer Visual Radio service. You can listen to it while running other applications.

## 12 My friends .....

It migrates self-contained sub-trees of the websites to let you stay in touch with your friends by flicking through Friendster, Hi5, etc.

## 13 Settings .....

From the main menu, select the menu icon and select the function of your choice in order to customize your cellphone: **Phone settings, Call settings, Security, Network, Connectivity.**

(1) The quality of the radio depends on the coverage of the radio station in that particular area.

## 14 Call log .....

You can access your call memory by pressing from the idle screen, and you will see **Outgoing call(s), Missed call(s)** and **Answered call(s)**.

## 15 Tools .....

### 15.1 Calendar

Once you enter this menu from the main menu, there is a monthly-view calendar for you to keep track of important meetings, appointments, etc. Days with events entered will be marked in color.

### 15.2 Alarm

Your cellphone has a built-in alarm clock with a snooze feature.

### 15.3 Fake call

This program enables you to call yourself by simulating a caller number/name, ringtone, contact photo at a scheduled time. It helps you to politely escape from social situations at any time you wish. This call can be rejected by key.

- Settings**
  - Predefined settings of Caller name/number, Call time, Ringtone, Image (Contact photo).
- Activate**
  - Activate a fake call by **"Tools\Fake call|Activate"** or by holding down the key on the main screen. The call will then be made at the predetermined time.

### 15.4 Notes

You can create a note in text or voice format by accessing **"Notes"** from the main menu.

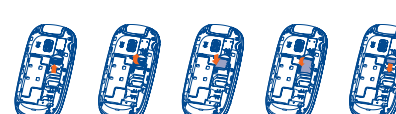
### 15.5 Calculator

Enter a number, select the type of operation to be performed, and enter the second number, then press **"="** to display the result.

### 15.6 File manager

You will have access to all audio and visual files stored in cellphone or memory card in File manager. You can access a number of items with this option: **My audios, My images, My videos, My creations, Other files, Phone, Memory card and Memory status.**

#### Inserting the memory card:



To release the microSD card holder, slide it in the direction of the arrow and lift it. Then insert the microSD card with the golden contact downward. Finally, turn down the microSD holder and slide it in the opposite direction to lock it.

### 15.7 World clock

The World clock shows current local time and the time zone in different cities.

### 15.8 Converter

Unit converter and Currency converter.

### 15.9 Stopwatch

The stopwatch is a simple application for measuring time with the possibility to register several results and suspend/resume measurement.

## 16 Java .....

Your Alcatel cellphone may include (1) some Java™ applications and games. You can also download new applications and games to your cellphone.

### 16.1 Java applications

Select **"Java applications"** to launch applications.

### 16.2 Java settings

This menu allows you to manage Java settings, in which you may set Audio, Backlight, Vibration and Heap size.

### 16.3 Java network

This menu allows you to select the network for Java.

### 16.4 Trusted certificates

View detailed information of the trusted certificates supported by your cellphone.

(1) Depending on your network operator.

