

Introduction

Thank you for purchasing your new ALCATEL ONE TOUCH Fierce™ phone. The ALCATEL ONE TOUCH Fierce™ comes equipped with many of the features and functions you want and need.

Home screen

- Convenient at-a-glance view of Shortcut applications
- Menu shortcuts for quick access

Power media applications

- Music & Radio
- Video & Streaming

Bluetooth®

With Bluetooth BT4.0 supporting HFP 1.5 profiles, you can enjoy hands-free conversations

General information

Your ALCATEL ONE TOUCH Fierce™ is a transceiver that operates on GSM Quadband with 850/900/1800/1900 MHz or UMTS Bands II (1900), IV (1700/2100/AWS).

Protection against theft

Your mobile phone is identified by an IMEI (mobile phone serial number) shown on the packaging label and in the product's memory. We recommend that you note the number the first time you use your mobile phone by entering *#06# and keep it in a safe place. It may be requested by the police or T-Mobile if your mobile phone is stolen.

CJA3380TBAAA

Table of Contents

Introduction	1
General information	1
1 Your mobile.....	5
1.1 Keys and connectors	5
1.2 Getting started.....	8
1.3 Home screen	13
1.4 Applications and widgets menu	22
2 Text input.....	23
2.1 Using Onscreen Keyboard	23
2.2 Text editing	24
3 Phone call, Call log and Contacts.....	25
3.1 Phone.....	25
3.2 Wi-Fi calling.....	31
3.3 Call log.....	33
3.4 People.....	33
4 Messaging, Email.....	40
4.1 Messaging.....	40
4.2 Gmail/Email	44
4.3 Google Talk	50
5 Calendar & Alarm Clock & Calculator	53
5.1 Calendar	53
5.2 Time.....	55
5.3 Calculator.....	56
6 Getting connected.....	58
6.1 Connecting to the Internet.....	58

6.2	Chrome.....	60
6.3	Connecting to Bluetooth devices	61
6.4	Connecting to a computer.....	62
6.5	Sharing your phone's mobile data connection	63
6.6	Connecting to virtual private networks	64
7	Google Play Store	66
7.1	Locate the item you want to download and install	66
7.2	Download and install.....	68
7.3	Manage your downloads.....	69
8	Multimedia applications.....	71
8.1	Camera	71
8.2	Gallery.....	73
8.3	YouTube.....	76
8.4	Music.....	77
8.5	Video Player.....	79
9	Google Maps	80
9.1	Get my location	80
9.2	Search for a location.....	81
9.3	Star a location	82
9.4	Get driving, public transportation or walking directions.....	83
9.5	Arrangement of Layers.....	84
9.6	Join Latitude to see your friends' locations and share yours with them.....	85
10	Others.....	88
10.1	File Manager.....	88
10.2	Sound Recorder	88
10.3	Radio.....	89
10.4	Setup.....	90
11	Settings.....	91

11.1	Wireless & networks.....	91
11.2	Devices.....	93
11.3	Personal	95
11.4	Accounts.....	99
11.5	System.....	100
12	Making the most of your phone.....	103
12.1	ONETOUCH Manager.....	103
12.2	Upgrade	104
13	12 MONTH LIMITED WARRANTY	105
14	Troubleshooting.....	107
	Safety and Use.....	111



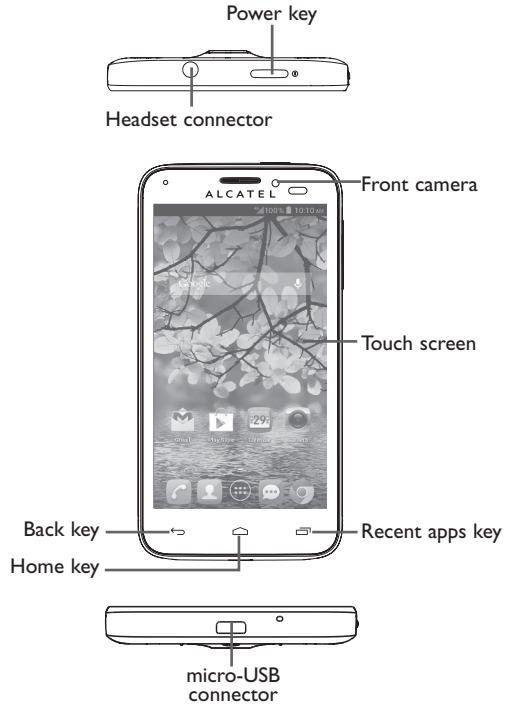
www.sar-tick.com

This product meets applicable national SAR limits of 1.6W/kg. The specific maximum SAR values can be found in the SAR INFORMATION section of this user guide.

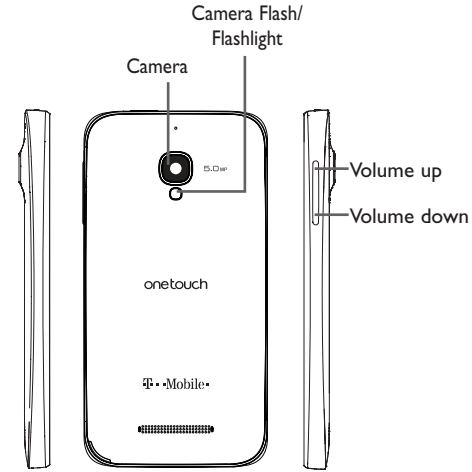
When carrying the product or using it while worn on your body, either use an approved accessory such as a holster or otherwise maintain a distance of 1.0 cm from the body to ensure compliance with RF exposure requirements. Note that the product may be transmitting even if you are not making a phone call.

Your mobile.....

1.1 Keys and connectors



5



Back key

- Touch to go back to the previous screen, or to close a dialog box, options menu, the notification panel, etc.



Home key

- While on any application or screen, touch to return to the Home screen.



Recent apps key

- Open a list of thumbnail images of apps you've worked with recently. Touch it to open an app. Swipe it left or right to remove a thumbnail from the list.
- Touch and hold: As **Menu** key, touch and hold it to access **Wallpaper**, **Manage applications** and **Settings**.

These keys are visible when the screen lights up.

6

○ Power key

- Press: Lock the screen/Light up the screen
- Press and hold: Show the pop-up menu to select from Power off/Restart/Airplane mode/Quick start/Ringer mode
- Press and hold: Power on
- Press and hold **Power** key and **Volume down** key to capture a screenshot.
- Press to mute the ringtone when there's an incoming call.
- Press and hold **Power** key and **Volume up** key for more than 7 seconds to restart the phone when it is dead.

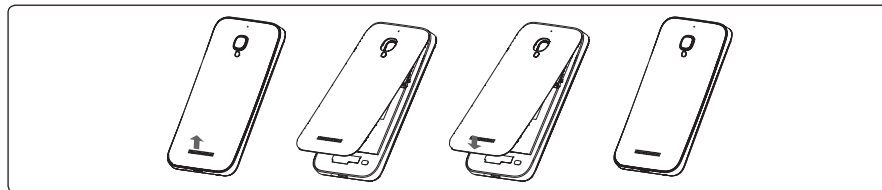
○ Volume Keys

- In call mode adjusts the earpiece or headset volume.
- In Music/Video/Streaming mode adjusts the media volume.
- In general mode adjusts the ring tone volume.
- Mute the ringtone of an incoming call.
- Press to light up the screen when it dims during a call.

I.2 Getting started

I.2.1 Set-up

Removing or installing the back cover

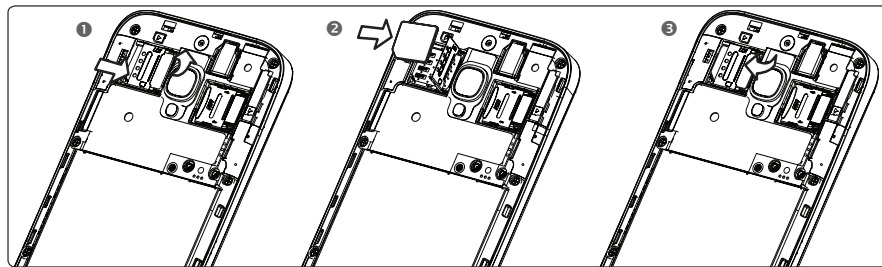


Caution: DO NOT DISMANTLE BATTERY, this may result in injury and will void your warranty. This phone model has a non-removable battery.

Inserting or removing the SIM card

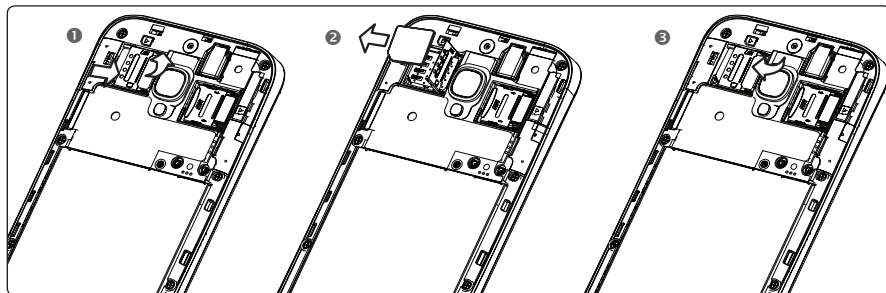
You must insert your SIM card to make phone calls. Please power off your phone before inserting or removing SIM card. This phone does not support automatic SIM card hot-swapping and phone must be rebooted for SIM card to be recognized.

Inserting SIM card



- ❶ To install SIM card, start by sliding the metal SIM card tray to right unlock position, tray will click and release when unlocked.
- ❷ Place the SIM card into slot with gold contacts facing downward.
- ❸ Once SIM card is placed into slot, close metal SIM card tray, then slide tray to left lock position, tray will click when locked.

Removing SIM card

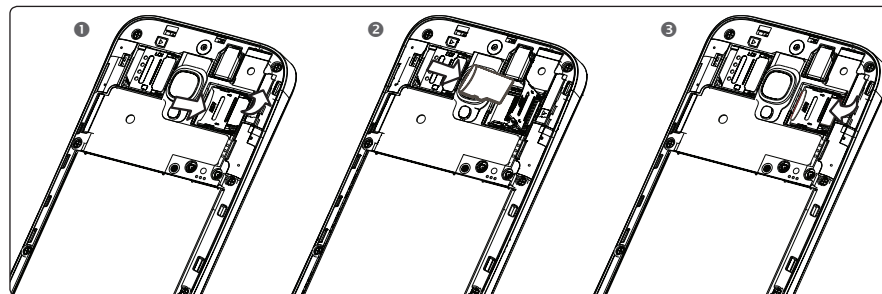


- ❶ To remove SIM card, start by sliding the metal SIM card tray to right unlock position, tray will click and release when unlocked.
- ❷ Remove SIM card from slot.
- ❸ Once SIM card is removed from slot, close metal SIM card tray, then slide tray to left lock position, tray will click when locked.

Installing or removing the microSD card

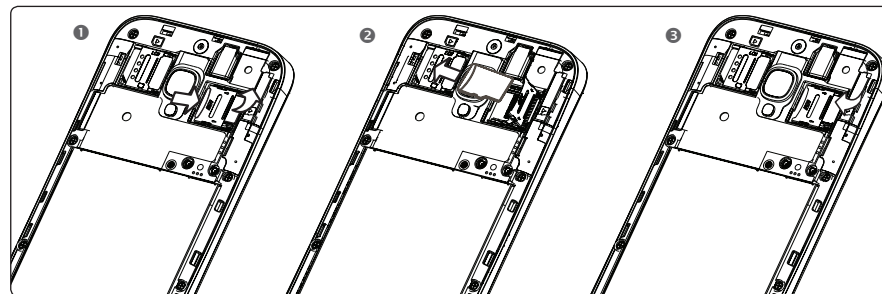
Please power off your phone before inserting or removing microSD card. This phone does not support automatic SD card hot-swapping and phone must be rebooted for microSD card to be recognized.

Installing microSD card



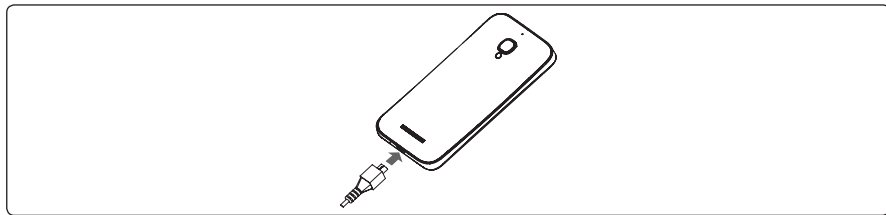
- ❶ To install microSD card, please start by sliding the metal microSD card tray to right unlock position, tray will click and release when unlocked.
- ❷ Place microSD card into the slot with the gold contacts facing downward.
- ❸ Once microSD card is placed into slot, close metal microSD card tray, then slide tray to left lock position, tray will click when locked.

Removing microSD card



- 1 To remove microSD card, start by sliding the metal SIM card tray to right unlock position, tray will click and release when unlocked.
- 2 Remove microSD card from slot.
- 3 Once microSD card is removed from slot, close metal microSD card tray, then slide tray to left lock position, tray will click when locked.


Charging the battery



Connect the battery charger to your phone and outlet respectively.

- When using your telephone for the first time, charge the battery fully (approximately 2.5 hours).

You are advised to fully charge the battery (). Charging status is indicated by the percentage on screen while the phone is powered off. The percentage increases as the phone is charged.

-  The charging status bar will not float if your battery is extensively consumed. To reduce power consumption and energy waste, when battery is fully charged, disconnect your charger from the plug; switch off Wi-Fi, GPS, Bluetooth or background-running applications when not in use; reduce the backlight time, etc.

1.2.2 Power on your phone

Hold down the **Power** key until the phone powers on, unlock your phone (Slide, PIN, password, Face unlock, Voice unlock or pattern) if necessary, once unlocked Home screen is displayed.

If you do not know your PIN code or if you have forgotten it, contact your network operator. Do not store PIN code within your phone, instead store PIN in a location that is accessible without using phone.

Set up your phone for the first time

The first time you power on the phone, you should set the following options:

- Touch **Get started**, then select the phone's language.
- Touch **Next**, then set up Wi-Fi.
- When Wi-Fi is connected, you may setup your Google account.
- **Setup Google account:** Touch **Setup now**. If you have a Google Account, touch **Yes** then **Sign in**, then enter your user name and password. If you forget your password, you can go to <http://www.google.com/> to retrieve it. If you don't own a Google Account, you are prompted to create one by touching **No/Get an account**. Touch **Not now** to skip to the next step.
- Touch **Next** to set up Google location service.
- One popup about system manager application will appear. Touch **More Info...** to learn more. Touch **Close** to skip to the next step.
- Here you may set up voice mail, sign into Email or social network(s).
- Touch **Go to Home screen**, then the Setup complete screen will display, touch **Close** to confirm.

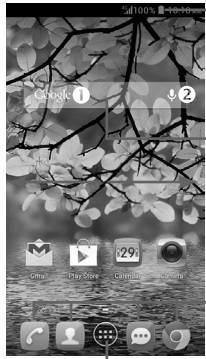
When phone is powered on without a SIM card inserted, you may still sign into your Google account and use some features by connecting to Wi-Fi network (refer to section 6.1.2 Wi-Fi).

1.2.3 Power off your phone

Hold down the **Power** key until the pop-up menu appears, select **Power off**, and touch **OK** to confirm.

1.3 Home screen

You can bring all the items (applications, shortcuts, folders and widgets) you love or use most frequently to your Home screen for quick access. Touch the **Home** key to switch to Home screen.



Status bar

- Status/Notification indicators
- Touch and drag down to open the notification panel.

Search bar

- Touch 1 to enter text search screen.
- Touch 2 to enter voice search screen.

Favorite tray applications

- Touch to enter the application.
- Touch and hold to move or change applications.

Application tab

- Touch to open applications and widgets menu.

Home screen is provided in an extended format to allow more space for adding applications, shortcuts etc. Slide the Home screens horizontally left and right to get a complete view of the Home screen. The white short line at the lower part of the screen indicates which screen you are viewing.

1.3.1 Using the touchscreen

Touch



To access an application, touch it with your finger.

Touch and Hold



Touch and hold the home screen to access the available options for setting the wallpaper.

Drag



Place your finger on any item to drag it to another location.

Slide/Swipe



Slide the screen to scroll up and down the applications, images, web pages... at your convenience.

Flick



Similar to swiping, but flicking makes it move quicker.

Pinch/Spread



Place your index finger and thumb on the screen surface and draw them apart or together to scale an element on the screen.

Rotate



























Automatically change the screen orientation from portrait to landscape by turning the phone sideways to have a better view.

1.3.2 Status bar

























From status bar, you can view both phone status (on the right side) and notification information (on the left side).

Status icons

The icons and illustrations in this guide are provided for informational purpose only.

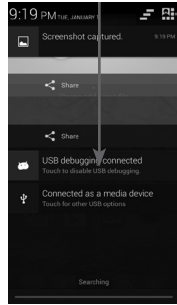
	2G connected		Vibrate mode
	2G in use		Ringer is silenced
	4G connected		Phone microphone is mute
	4G in use		Battery is very low
	Data transmitting		Battery is low
	Connected to a Wi-Fi network		Battery is partially drained
	Wi-Fi Calling is on		Battery is full
	Bluetooth is on		Battery is charging
	Connected to a Bluetooth device		Headset connected
	Airplane mode		No signal (gray)
	Alarm is set		Signal strength (blue)
	GPS is on		No SIM card inserted

Notification icons



	New text or multimedia message		Call in progress
	Problem with SMS or MMS delivery		Missed call
	New Google Talk message		Call on hold
	New voicemail		Call forwarding is on
	Upcoming event		Uploading data
	Data is synchronizing		Downloading data
	Song is playing		Download finished
	Screenshot error		Select input method
	USB tethering is on		An open Wi-Fi network is available
	Portable Wi-Fi hotspot is on		Phone is connected via USB cable
	Screenshot captured		Radio is on
	Carrier data use threshold approaching or exceeded		Connected to VPN

Notification panel

Touch and drag down the Status bar to open the notification panel. Touch and drag up to close it. From the Notification panel, you can open items and other reminders indicated by notification icons or view wireless service information.

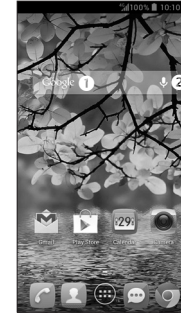


Touch to open quick settings bar and enable/disable functions or change modes.

Touch the icon  to clear all event-based notifications (other ongoing notifications will remain). Touch  and then the Settings icon  to access **Settings**.

1.3.3 Search bar


The phone provides a Search function which can be used to locate information within applications, the phone or the web.



1 Search by text

- Touch Search bar from the Home screen.
- Enter the text/phrase you want to search for.
- Touch **Search** on the keyboard to begin search.



2 Search by voice

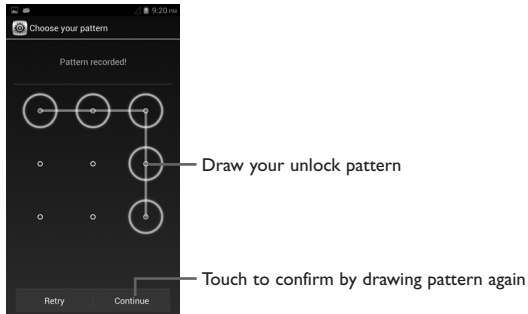
- Touch  from Search bar to display a dialog screen.
- Speak the word/phrase you want to search for, once speaking is completed a search will automatically take place and a list of search results will be displayed.

1.3.4 Lock/Unlock your screen

To protect your phone and privacy, you can lock the phone screen by choosing slide or creating a variety of patterns, PIN or password.

To create a screen unlock pattern (refer to section “Screen lock” for detail settings)

- Drag down the notification panel and touch  and then the settings icon  to enter Settings, then touch **Security\Set up screen lock\Pattern**.
- Draw your own pattern.



To create a screen unlock PIN/Password


- Touch **Settings\Security\Set up screen lock\PIN or Password**.
- Set your PIN or password.

To lock phone screen

Press the **Power** key once to lock the screen.

To unlock phone screen


Press the power key once to light up the screen, draw the unlock pattern you have created or enter PIN or password to unlock the screen.

If you have chosen **Slide** as the screen lock, touch and drag the icon  to any direction to unlock the screen.



1.3.5 Personalize your Home screen

Add

Touch the application tab , touch and hold an application or a widget to activate the Move mode, and drag the item to any Home screen.

While adding an application to a Home screen, drag it to the top of **App info** icon to view its detail information. If the application is downloaded, drag it to the top of **Uninstall** icon to uninstall it directly.

Reposition

Touch and hold the item to be repositioned to activate the Move mode, drag the item to the desired position and then release. You can move items both on the Home screens and Favorite tray. Hold the icon on the left or right edge of the screen to drag the item to another Home screen.

Remove

Touch and hold the item to be removed to activate the Move mode, drag the item up to and release after the item turns red.


Create folders

To improve the organization of items (shortcuts or applications) on the Home screens and Favorite tray, you can add them to a folder by stacking one item on top of another. To rename a folder, open folder, touch the folder's title bar and input new name.

Wallpaper customization

Touch and hold an empty area on any Home screen, a **Select wallpaper from** pop-up window will appear, offering a range of options. **Gallery** includes pictures you have taken, cropped or downloaded. **Live wallpapers** includes a scrolling list of animated wallpapers. **Video wallpaper** includes preset videos in phone, videos stored in microSD card and camera. **Wallpaper gallery** includes all preset wallpapers in the phone. Slide left and right to locate a desired image, touch **Set wallpaper** to confirm.

1.3.6 Application tab

Touch  on the Home screen to enter applications and widgets list.

To return to the Home screen, touch the **Home** key.

Consult recently-used applications

To consult recently-used applications, you can touch the **Recent apps** key. Touch a thumbnail in the window to open the related application. Touch one thumbnail and slide it to the left or right to delete it. You can also touch and hold the app and touch **Remove from list** to delete it.





1.3.7 Volume adjustment

Using the volume key


Press **Volume** key to adjust phone volume. To active the vibrate mode, press the **Volume down** key until the phone vibrates. Press the **Volume down** key once more to active the silent mode.


Using the Settings menu

Drag down the notification panel and touch  and then the settings icon  to enter Settings, then touch **Audio profiles**\General\Volumes you can set the volume of calls Ringtone, Notifications, Media, and Alarms to your preference.

1.4 Applications and widgets menu

This list contains all pre-embedded and newly installed applications and widgets.


To access the list, touch  from Home screens. Touch the **Home** key or the **Back** key to return to a Home screen.

Slide left and right to view all applications and widgets. Touch **APPS**, **DOWNLOADED** or **WIDGETS** located at top of menu to access the category directly. Touch the icon  to access the **Google Play Store**.

2 Text input

2.1 Using Onscreen Keyboard

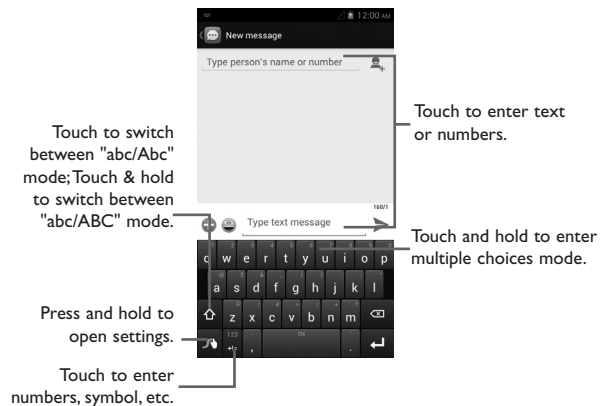
Onscreen Keyboard settings

Touch  from the Home screen, select **Settings\Language & input**. Touch the Settings icon on the right of **Android keyboard**, **Google voice typing** or **Swype** to view available settings for each input option.

Adjust the Onscreen Keyboard orientation

Turn the phone sideways or upright to adjust the Onscreen Keyboard orientation. You can also adjust it by changing the settings (On application list, touch **Settings\Display\Orientation**).

2.1.1 Default keyboard








Switch between keyboards while in message screen

While in message screen, open the notification panel, touch **Select input method** and switch between keyboards.

2.2 Text editing

You can edit the text you have entered.

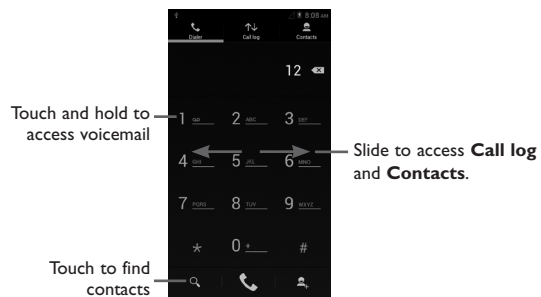
- Touch and hold or double-tap within the text you would like to edit.
- Drag the tabs to change the high-lighted selection.
- The following options will show on top bar: **Select all** , **Cut** , **Copy**  and **Paste** .
- Touch the icon .


3 Phone call, Call log and Contacts

3.1 Phone


3.1.1 Placing a call


You can easily launch a call using **Phone**. Touch  from Favorites tray or from Application menu.





Enter the desired number directly into dial pad or select a contact from **Contacts** or **Call log** by sliding or touching tabs, then touch  to place the call.

The number you entered can be saved to **Contacts** by touching and holding the **Menu** key and touching **Add to Contacts**.


If you make a mistake, you can delete the incorrect digits by touching .

To hang up a call, touch .

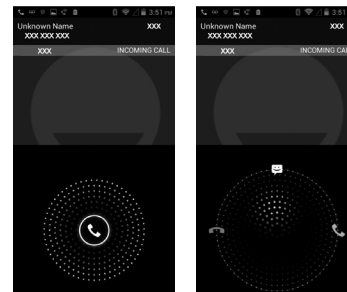
International call


To dial an international call, touch and hold  to enter “+”, then enter the international country prefix followed by the full phone number and finally touch .

Emergency call

If your phone has network coverage, dial emergency number and touch  to make an emergency call. This works even without a SIM card and without typing the PIN code.

3.1.2 Answering or rejecting a call




When you receive a call, touch .

- Slide right to answer;
- Slide left to reject;
- Slide up to reject a call and send a preset text message.

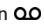
To mute ringtone volume of an incoming call, press the **Volume up/down** key or turn the phone face down if **Turn over to mute** is activated. To activate, touch **Settings\Gestures\Turn over to mute** or touch **Phone\Settings\Other settings\Turn over to mute**.

3.1.3 Calling your voicemail

Voicemails are recorded messages left by incoming callers when calls are missed or forwarded to voicemail.

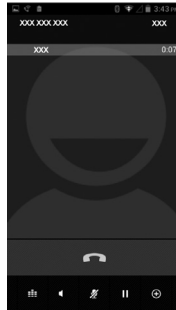
To access your voicemail, touch and hold  on **Phone** dial pad.

To set your voicemail number, touch and hold the **Menu** key and touch **Settings\Call settings\Voice call\Voicemail**.

If you receive a voicemail, a voicemail icon  appears on the Status bar. Open the Notification panel, touch **New** to access voicemail.

3.1.4 During a call

To adjust the volume during a call, press the **Volume up/down** key.



Touch to end the current call.



Touch to display dial pad.



Touch to activate speaker mode during a call. Touch this icon again to deactivate speaker mode.



Touch to mute the current call. Touch this icon again to unmute the call.



Touch to hold the current call. Touch this icon again to retrieve the call.



Touch to add a call.




To avoid misoperation on touchscreen during a call, screen will be locked automatically when you put the phone close to your ear; touchscreen will be unlocked when the cellphone is taken away from your ear.

3.1.5 Managing multiple calls


With this phone you can handle multiple calls at the same time.







Swap calls

When you accept two calls, touch icon  , you can now switch between two lines. The current call is put on hold and you have joined in the other call.

Conference calls

You can set up a conference call.

- Place a call to the first participant of the conference call.
- Touch icon  .

- Enter the phone number of the person you want to add to conference and touch icon . You can also add participants from **Contacts** or **Call log**.
- Touch icon  to start a conference call.
- During a conference call, touch  to drop a participant or to talk privately to one of the participants. Touch  to drop the participant from the conference, touch  to talk privately to the participant and hold on other participants.
- Touch  to end the conference call and disconnect all callers.

3.1.6 Call settings

Touch and hold the **Menu** key and touch **Settings** from Dial screen, the following options are available:

Voice call

• Voicemail

Voicemail service Opens a dialog box where you can select T-Mobile voicemail service or another service.

Voicemail settings If you are using T-Mobile voicemail service, this opens a dialog box where you can enter your voicemail phone number to manage and listen to voicemails. You can enter a comma (,) to insert a pause into the number — for example, to add a password after the phone number.

• IP prefix number

Enter prefix number Edit prefix number for IP dial.

• Call forwarding

Touch to configure how your calls are forwarded when you are busy, unanswered or unreachable.

• Additional settings

Caller ID Opens a dialog box where you can set whether your phone number is displayed when making calls.

Call waiting Mark the check box to notify you of a new incoming call.

Call waiting status Check the call waiting status of your phone.

Other settings

• Fixed Dialing Numbers

Fixed Dialing Number (FDN) is a service mode of SIM, where outgoing calls are restricted to a set of phone numbers. These numbers are added to the FDN list. The most common application of FDN is for parents to restrict the phone numbers which their children can dial.

For security reasons, you'll be prompted to enable FDN by entering SIM PIN2 which is usually acquired from your service provider or SIM maker. **Minute reminder**

Mark the check box to enable minute reminder at 50s of every minute during a call.

Vibrate reminder

Mark the checkbox to enable vibration when the call is connected.

Turn over to mute

Marking the checkbox lets you mute the incoming calls by turning the phone over.