

Quick Start Guide

For more information about how to use the phone, please go to www.alcatelone-touch.com to download the complete user manual. Also on our website you can find helpful FAQs, software upgrade, etc.

Table of contents

- 1 Your mobile.....3
- 2 Getting started.....8
- 3 Making a call.....9
- 4 Menu arrange.....10
- 5 Messaging.....10
- 6 Email.....11
- 7 Contacts.....12
- 8 Call log.....12
- 9 Media.....13
- 10 File manager.....14
- 11 Internet.....15
- 12 Entertainment.....16
- 13 Tools.....17
- 14 Apps.....18
- 15 Profile.....19
- 16 Settings.....19
- 17 Making the most of your mobile.....19



ALCATEL
onetouch

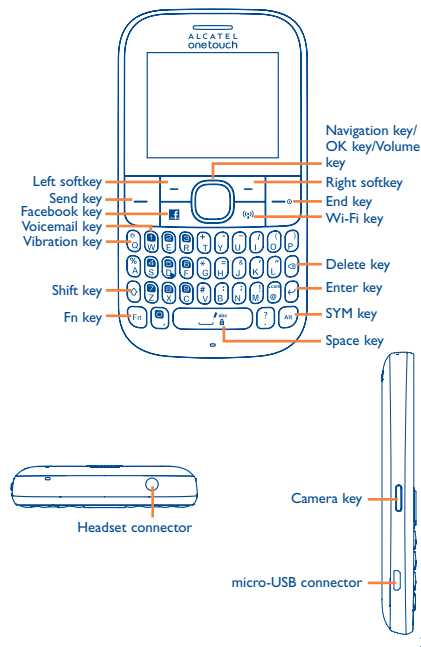
English - CJB33B0ALAAA



PROTECT YOUR HEARING
To prevent possible hearing damage, do not listen at high volume levels for long periods. Exercise caution when holding your device near your ear while the loudspeaker is in use.

Your mobile

1.1 Keys and connectors



- Navigation key Press to go left/right/up/down Press to access function
- OK key Press to confirm an option
- Volume key Press to adjust volume up/down
- Answer/Send a call
- Enter Call log
- Press: End a call Return to the Home screen
- Press and hold: Power on/off
- Press and hold: Access your voicemail
- Press once: Input a capitalized character
- Press twice: Lock the keyboard in capital letter input mode
- Press once: Input a top-half character
- Press twice: Lock the keyboard in top-half key input mode
- Fn + B: Access Bluetooth
- Fn + M: Access Music
- Fn + P: Access Profiles
- Fn + R: Access Email
- Short key press: Enter a space (on edit mode) Unlock the keypad (on Home screen)
- Press and hold: Access language list (on edit mode) Lock the keypad (on Home screen)
- Hold down Fn key, then press Space key to select input method

- Alt
- Confirm an option
- Enter the next line
- Press and hold: Turn on/off vibration alert
- Press: Take a picture
- Press and hold: Access Camera

1.2 Status bar icons (1)

- Battery charge level**
- Vibrate alert:** your phone vibrates, but does not ring or beep with the exception of the alarm.
- Bluetooth status (Activated).**
- Bluetooth status (Connected to an audio device).**
- Headset connected.**
- Call forwarding activated:** your calls are forwarded.

(1) The icons and illustrations in this guide are provided for informational purposes only.

4 Menu arrange

It is designed to vary according to your preference.

Change the order

Access the main menu, focus on the main menu item you want to move, select "Options!Move", and tick "i" will be shown on the item you selected, then release it to your favorite destination.

Show/Hide

Access the main menu, select "Options!Add and remove menu", and select the left check box of the selected menu once to show/hide, and then select "Done" to save the operation.

5 Messaging

5.1 Access

You may access this menu using the following options:

- Access from the main menu by selecting "Messaging".
- Select from shortcut bar, and then enter the sub-menu you require.

When you access "Messaging", you can switch between SMS/MMS and Email by navigation key.

5.2 Conversational On (Off) mode

In conversational on mode, you can view chat history in chronological order. In conversational off mode, you may have access to the following folders: **Inbox, Outbox, Sent, Drafts, Voicemail, Broadcast SMS, Empty folder, Archive, Templates, Emergency alerts and Settings.** Conversational view mode is set as default. You may switch to conventional mode by selecting "Settings!Switch view mode". The following instructions are based on conversational mode.

5.3 Write message

You can select "Messaging!New message" from the main menu or access from shortcut to write text/multimedia message. One or more recipients can be added from contact list and you can remove a recipient by pressing the Delete key. Press the key and select "More" to multi-choice recipients from Contacts.

An SMS will be converted to MMS automatically when images, videos, audio, slides or attachments are inserted; Subject, CC/BCC/email address is added; or the message contains more than 8 pages of text.

- An SMS message of more than a certain number of characters (the number of characters depends on your language) will be charged as several SMS. An MMS message containing photos and/or sounds may also be billed as more than one message. Specific letters (accent) will increase the size of the SMS, this may cause multiple SMS to be sent to your recipient.

6 Email.....

Your phone has an email client with the settings pre-defined for a few popular email services like - Gmail, Yahoo, AOL, etc. Besides this, you can set up other POP3 or IMAP4 email accounts that you may be using.

7 Contacts.....

7.1 Accessing your contacts

You can access this function by selecting "Contacts" from the main menu.

7.2 Adding a contact

You can add a new contact to phone or SIM card by selecting "Add new contact".

8 Call log

8.1 Access

You can access the function using the following options:

- Select from main menu
- Press key from Home screen
- Select from shortcut bar, and then enter the sub-menu you require.

8.2 Available options

When you press "Options", you can have access to **Send message, Dial, Missed calls, Edit before call, Delete, etc.**

9 Media

9.1 Camera

Your mobile phone is fitted with a camera for taking photos and shooting videos.

9.2 Music.....

You can access this feature from the main menu by selecting "Media!Music player". You will have full flexibility of managing music both on your mobile and microSD card.

9.3 Image.....

A library links to the pictures both shown in list, slide, sent, set as wallpaper, by MMS, Email, and Bluetooth.

9.4 Video

Contains all video clips both in phone and microSD card and enables you to play, send, delete, rename, sort, etc.

9.5 Radio.....

Your phone is equipped with a radio (1) with RDS (2) functionality. You can use the application as a traditional radio with saved channels or with parallel visual information related to the radio program on the display if you tune to stations that offer Visual Radio service. You can listen to it while running other applications.

(1) The quality of the radio depends on the coverage of the radio station in that particular area.
(2) Depending on your network operator and market.

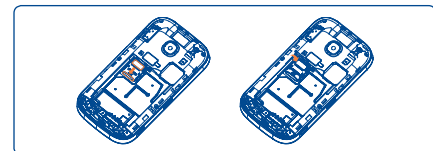
9.6 Sound recorder

Accessing this feature from the main menu by selecting "Media!Voice recorder", allows you to make voice or sound recordings.

10 File manager

You will have access to all audio and visual files stored in phone or microSD card in File manager.

Inserting the microSD card:



Insert the microSD card with golden contact facing downwards into the slot until it is locked. Gently push the memory card until it is unlocked.

11 Internet(1)

- 11.1 WAP** Access WAP options: **Homepage, Bookmarks, Go to URL, Last web address, Recent pages, Offline pages, Service inbox, Settings.**

(1) Depending on your network operator. May cause additional network charges for data flow to provide this service. Extra fees might also be charged in roaming states.

- Alarm or appointments programmed.**
- Level of network reception.**
- Voicemail message arrived.**
- Missed calls.**
- Call in progress.**
- Stopwatch is active.**
- Radio is on.**
- Email unread.**
- WAP messages.**
- Roaming.**
- microSD card scanning completed.**
- GPRS connecting.**
- GPRS attached.**
- EDGE connecting.**
- EDGE attached.**

- 3G network connecting.**
- 3G network attached.**
- Wi-Fi connected**
- Wi-Fi disconnected**
- Music active.**
- MMS receipt in progress.**
- Silence mode:** your phone does not ring, beep or vibrate with the exception of the alarm.
- Message unread.**
- (Red) Message list is full:** your phone cannot accept any new messages. You must access the message list and delete at least one message on your SIM card.
- Airplane mode.**

1.3 Home screen

You can customize your Home screen by selecting "Personalize" through Right softkey.

1.3.1 Widget bar

Widgets are convenient shortcuts for quick access from the Home screen.

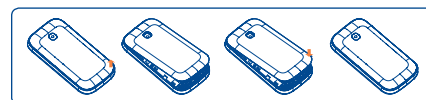
1.3.2 Change wallpaper

You can select a folder to choose one image as favorite wallpaper by selecting "Change wallpaper".

2 Getting started.....

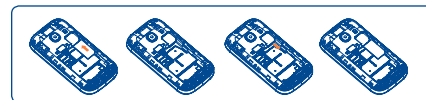
2.1 Set-up

Removing or installing the back cover



Inserting or removing the SIM card

You must insert your SIM card to make phone calls. Please power off your phone and remove battery before inserting or removing the SIM card.



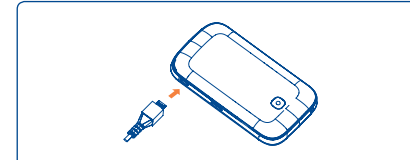
Place the SIM card with the chip facing downwards and slide it into its housing. Make sure that it is correctly inserted. To remove the card, press and slide it out.

Installing or removing the battery



Insert and click the battery into place, then close the telephone cover. Unclip the cover, then remove the battery.

Charging the battery



Connect the battery charger to your phone and outlet respectively.

To reduce power consumption and energy waste, when battery is fully charged, disconnect your charger from the phone; switch off Bluetooth and running applications in the background when not in use, reduce the backlight time, etc.

2.2 Power on your phone

Hold down the key until the telephone powers on.

2.3 Power off your phone

Hold down the key from the Home screen.

3 Making a call

Dial the desired number then press the key to place the call. The number you entered can be saved to Contacts by selecting "Save". If you make a mistake, you may press key to delete the incorrect digits one by one, or you may press and hold key to delete all.

To hang up the call, press the key.

13 Tools.....

13.1 Alarm

Your mobile phone has a built-in alarm clock with a snooze feature. You can set up to five separate alarms and choose whether or not the alarm should repeat.

13.2 Calculator.....

Access this feature by selecting "Tools!Calculator" from the main menu.

13.3 Calendar

Once you enter this menu from the main menu, there is a monthly-view calendar for you to keep track of important meetings, appointments, etc. Days with events entered will be marked in color.

13.4 Call filter.....

You can create Blacklist and Whitelist for incoming call.

13.5 Notes.....

You can create a note in text format by accessing "Tools!Notes" from the main menu.

13.6 Bluetooth™

Access this feature by pressing "Menu" through Left softkey from the Home screen to enter the main menu, then selecting "Tools!Bluetooth".

13.7 Wi-Fi

To access this function, press "Menu" to enter the main menu, and select .

(1) Depending on your country or your operator.

13.8 Tethering.....

Tethering is a method for connecting a computer or other devices to the internet via an internet-capable mobile phone. Access this feature by pressing "Menu" through Left softkey from the Home Screen to enter the main menu, then selecting "Tethering".

13.9 World clock.....

The World clock shows current local time and the time zone in different cities. You may view up to 3 cities.

13.10 Stopwatch.....

The stopwatch is a simple application for measuring time with the possibility to register several results and suspend/resume measurement.

13.11 Unit converter

You can use the Weight and Length conversion by selecting the unit you wish to convert, then press to input the digits. Finally confirm with "OK".

13.12 Currency converter

You can use currency conversion by selecting exchange rate. Finally confirm with "OK".

14 Apps

Apps store is an online software store, where you can download and install applications and games to your phone.

