

# ONE TOUCH V101

## USER MANUAL

V101

About more help information and Frequently Asked  
Question please browse the website  
[www.alcatelone-touch.com](http://www.alcatelone-touch.com)

**ALCATEL**  
**onetouch®**

CJA18K001AAA

# Contents

1. YOUR DEVICE .....	3
What's in the box .....	3
Appearance illustration .....	3
Installation.....	4
2. QUICK START TO MIRROR .....	6
3. DISPLAY MEDIA FILES IN LNA.....	7
Install Software .....	7
Set Wi-Fi network for your V101 .....	7
Push media files to TV .....	8
4. UPGRADE .....	9
5. SAFETY AND USE .....	11

## PROTECT YOUR HEARING

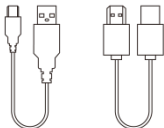
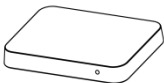


use.

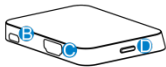
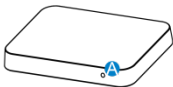
To prevent possible hearing damage, do not listen at high volume levels for long periods. Exercise caution when holding your device near your ear while the loud speaker is in

# 1. YOUR DEVICE

## What's in the box



## Appearance illustration



- 
- |   |   |
|---|---|
| A | <b>Indicator LED</b><br>The LED will light when V101 starts up.                               |
| B | <b>Micro USB Port</b><br>Connect V101 to USB port of TV or charger(5V, 1A) using an USB cable |
| C | <b>HDMI Port</b><br>Connect V101 to the HDMI port of TV using an HDMI cable                   |
| D | <b>Key</b><br>Press the key when you need to debug V101 after connected with PC               |
-

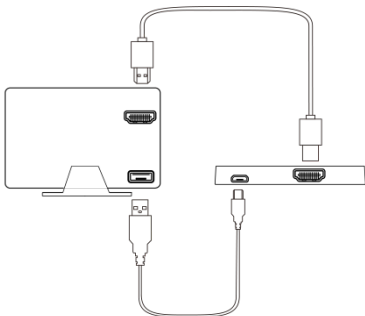
## Installation

### **Connect HDMI Cable:**

- Connect one end of the HDMI cable to the back/side of your TV;
- Connect the other end of the cable to HDMI port on the back of V101;

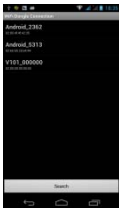
### **Connect USB Cable:**

- Connect one end standard USB port of the USB cable to the back/side of your TV;
- Connect the Micro USB port of the USB cable to Micro port on the back of V101.

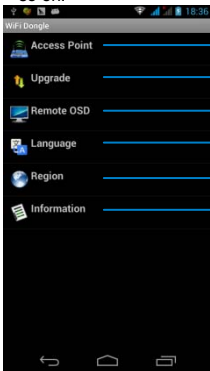


### **Install TV Link tool**

- Download TV Link tool from our web site <http://support.alcatelonetouch.com>;
- Copy TV Link tool to your mobile device then install it;
- Open TV Link tool on your mobile device;



d) Click "search" icon, seconds later choose "V101\_\*\*\*\*\*" item to connect with V101, then you can the menu UI as below, you can set wireless network, upgrade, setting V101 and so on.



Touch to set  
Wi-Fi network

Touch to  
upgrade

Touch to adjust  
display scale

Touch to change  
language

Touch to choose  
your region

Touch to see  
V101's info

### Turn on your TV

Turn on your TV and set to the input source of your TV as HDMI port which you plugged into TV.

**Tips:** post magic tape

## 2. QUICK START TO MIRROR

TV will display the main UI after V100 be installed several seconds;



### Set your mobile device

1. click "Setting" -> "Display" -> "wireless display" -> "search";
2. Please click "V101-\*\*\*\*" item, then you can see the connection status on the UI. Seconds later you can see the screen of mobile device display on the TV;
3. When you don't use it please disconnect on the mobile device follow below step: click "Setting" -> "Display" -> "wireless display" -> "V101-\*\*\*\*", choose "yes", TV picture will return main UI after 20 seconds.

#### **Tips:**

- a) The mobile devices (smart phone or tablet) connected with V101 should support Miracast function;
- b) Please unplug the USB port connected with TV if you don't use V101 for a long time in order to avoid V101 too hot;

- c) V101 can connect with mobile device one to one only, so please disconnect the current mobile device when you want to connect with another mobile device;
- d) The mobile device should be connect with Wi-Fi network firstly then connect with V101, otherwise mobile device maybe can't access internet.

### 3. DISPLAY MEDIA FILES IN LNA

#### Install Software

Search and install Skifta software from Google Play.

#### Set Wi-Fi network for your V101

1. Open TV Link tool on your mobile device, click “search” icon, seconds later choose “V101\_\*\*\*\*\*” item to connect with V101, then you can the menu UI as below:

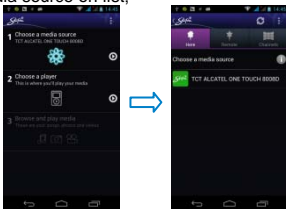


2. Choose "Access Point": set Wi-Fi network SSID and password for V101, V101 will start to connect Wi-Fi network after click "connect", you can check connection info on TV.



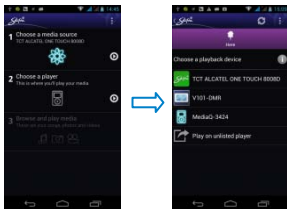
## Push media files to TV

1. Open Skifta on your mobile device, choose the first item to enter the next UI, then choose a media source on list;

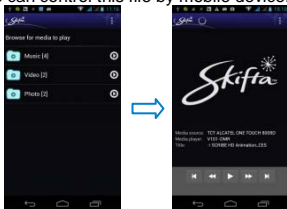


2. Choose the second item to enter the next UI, then choose a playback device on list;





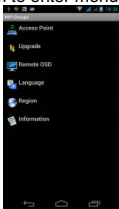
3. Choose the third item to enter the next UI, then choose a media file from your mobile device, you can see the media file playing on TV and also can control this file by mobile device.



## 4. UPGRADE

1. Download new Firmware to your mobile device (smart phone or tablet) from our web site <http://support.alcatelonetouch.com> on "upgrade your software" page, record storage directory of new Firmware.

2. Open TV Link tool on your mobile device, click “search” icon, seconds later choose “V101\_\*\*\*\*\*” item to enter menu:



3. Click "Upgrade" -> "P2P Upgrade(Local)", browse new Firmware storage directory, choose new Firmware then smart devices will upload Firmware to V101, you can see uploading process as below on smart devices and TV;



5. V101 will restart automatically to upgrade SW in several minutes, you can see upgrade process as below on TV. **Don't power off in the meanwhile** otherwise V101 will be damaged!

## 5. SAFETY AND USE

We recommend that you read this chapter carefully before using the Wi-Fi display Dongle. The manufacturer disclaims any liability for damage, which may result as a consequence of improper use of the Wi-Fi display Dongle or of use contrary to the instructions contained herein.

### ● **Traffic Safety**

When driving, do not use the Wi-Fi display Dongle.

When switched on, the Wi-Fi display Dongle emits electromagnetic waves that can interfere with the vehicle's electronic systems such as ABS anti-lock brakes or airbags. To ensure that there is no problem:

- Do not place the Wi-Fi display Dongle on top of the dashboard or within an airbag deployment area.
- Check with your car dealer or the car manufacturer to make sure that the dashboard is adequately shielded from Dongle RF energy.

### ● **Conditions of Use**

- Switch the Wi-Fi display Dongle off before boarding an aircraft.
- Switch the Wi-Fi display Dongle off when you are in health care facilities, except in designated areas. As with many other types of equipment now in regular use, the Wi-Fi display Dongle can interfere with other electrical or electronic devices, or equipment-using radio frequencies.
- Switch the Wi-Fi display Dongle off when

you are near gas or flammable liquids. Strictly obey all signs and instructions posted in a fuel depot, petrol station, chemical plant, or in any potentially explosive atmosphere.

- When the Wi-Fi display Dongle is switched on, it should be kept at least 15 cm from any medical device such as a pacemaker, a hearing aid or insulin pump, etc.
- Do not let children use the Wi-Fi display Dongle without supervision.
- When replacing the cover, please note that the Wi-Fi display Dongle may contain substances that could create an allergic reaction.
- Always handle the Wi-Fi display Dongle with care and keep it in a clean and dust-free place.
- Do not allow the Wi-Fi display Dongle to be exposed to adverse weather or environmental conditions (moisture, humidity, rain, infiltration of liquids, dust, sea air, etc). The manufacturer's recommended operating temperature range is  $-15^{\circ}\text{C}$  to  $+55^{\circ}\text{C}$ .
- Do not open, dismantle or attempt to repair the Wi-Fi display Dongle yourself.
- Do not drop, throw or bend the USB Dongle.
- Do not paint it.

### ● **WEEE Approval**

The Wi-Fi display Dongle is in compliance with the essential requirements and other relevant provisions of the Waste Electrical and Electronic Equipment Directive 2002/96/EC (WEEE Directive).

## ● **RoHs Approval**

The Wi-Fi display Dongle is in compliance with the restriction of the use of certain hazardous substances in electrical and electronic equipment Directive 2011/65/EU (RoHs Directive).

## ● **Radio Waves**

Proof of compliance with international standards (ICNIRP) or with European Directive 1999/5/EC (R&TTE) is required of all Dongle models before they can be put on the market. The protection of the health and safety for the user and any other person is an essential requirement of these standards or this directive.

**THIS DEVICE MEETS INTERNATIONAL GUIDELINES FOR EXPOSURE TO RADIO WAVES.**

Your device is a radio transmitter and receiver. It is designed not to exceed the limits for exposure to radio waves (radio frequency electromagnetic fields) recommended by international guidelines. The guidelines were developed by an independent scientific organization (ICNIRP) and include a substantial safety margin designed to assure the safety of all persons, regardless of age and health.

The device is tested for typical body worn operation. The minimum distance between the user and/or any bystander and the radiating structure of the transmitter is 20cm.

The World Health Organization has stated that present scientific information does not indicate the need for any special precautions for the use of mobile devices. They recommend that if you are interested in further reducing your exposure then you can easily do so by limiting your usage or keep the device away from the head and body.



The Wi-Fi Logo is a certification mark of the Wi-Fi Alliance. Your device uses non-harmonized frequency and is intended for use in all European countries.

The WLAN can be operated in the EU without restriction indoors, but cannot be operated outdoors in France.

### **General Information**

Internet address: [www.alcatelonetouch.com](http://www.alcatelonetouch.com)

TCT Mobile Limited address: Room 1910-12A, Tower 3, China HK City, 33 Canton Road, Tsimshatsui, Kowloon, Hong Kong.

Hot Line Number: see "TCT Mobile Services" leaflet or go to our website.

On our website, you will find our FAQ (Frequently Asked Questions) section. You can also contact us by e-mail to ask any questions you may have.

An electronic version of this user guide is available in English and other languages according to availability on our server: [www.alcatelonetouch.com](http://www.alcatelonetouch.com)

Your device is a transceiver that operates on Wi-Fi with 2.4GHz GHz.

When using the product , maintain a distance of 20cm from the body to ensure compliance with R F exposure requirements. Power is so low that no

RF exposure calculation is needed.

it is safe during normal use.

This device complies with part 15 of the FCC rules. Operation is subject to the following two conditions: (1) this device may not cause harmful interference, and (2) this device must accept any interference received, including interference that may cause undesired operation.

NOTE: The manufacturer is not responsible for any radio or TV interference caused by unauthorized modifications or changes to this equipment. Such modifications or changes could void the user's authority to operate the equipment.

NOTE: This equipment has been tested and found to comply with the limits for a Class B digital device, pursuant to part 15 of the FCC Rules. These limits are designed to provide reasonable protection against harmful interference in a residential installation. This equipment generates uses and can radiate radio frequency energy and, if not installed and used in accordance with the instructions, may cause harmful interference to radio communications. However, there is no guarantee that interference will not occur in a particular installation. If this equipment does cause harmful interference to radio or television reception, which can be determined by turning the equipment off and on, the user is encouraged to try to correct the

interference by one or more of the following measures:

- Reorient or relocate the receiving antenna.
- Increase the separation between the equipment and receiver.
- Connect the equipment into an outlet on a circuit different from that to which the receiver is connected.
- Consult the dealer or an experienced radio/TV technician for help.