

Model No. : LC-330C

Features:

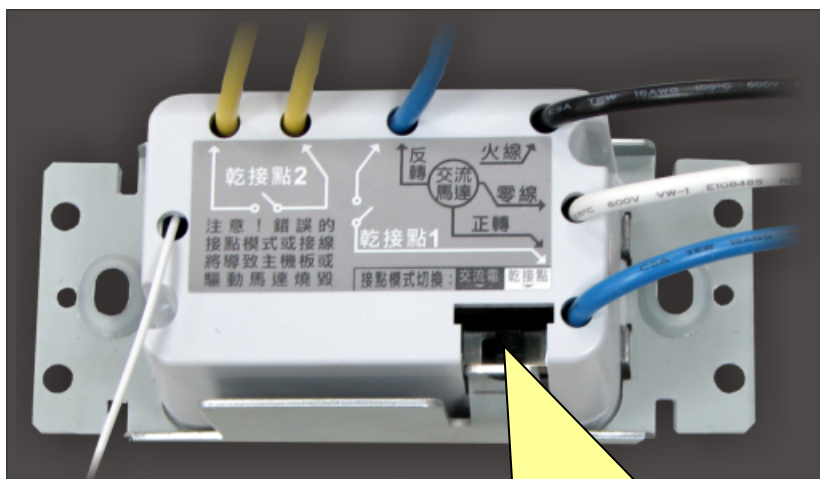
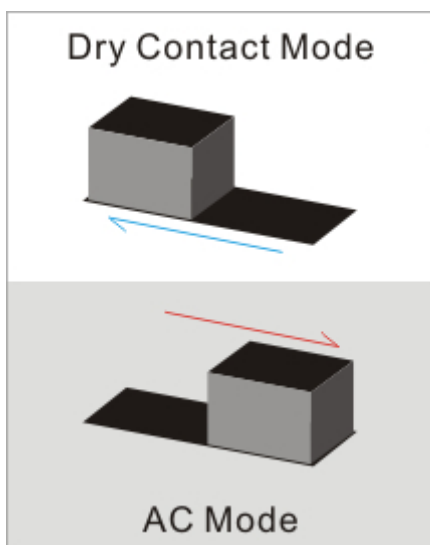
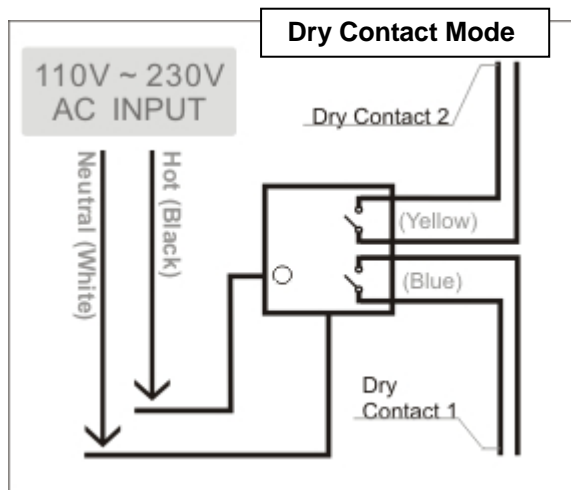
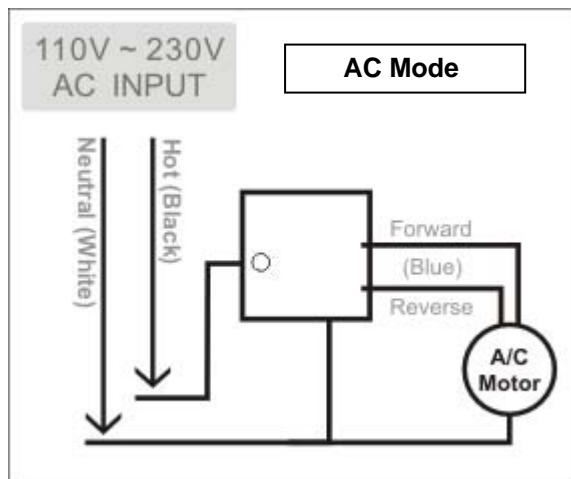
- Touch, RF Remote, Power Control 3 in 1 design.
- RF wireless receive function
- Induction touch control: Open(Up), Stop, Close(Down)
- Detachable Panel, self-expression under paper design.
- Control Output (Alternative)
 - AC 100V~240V, forward/reverse control
 - DO dry contact output x 2 suites
- Programmable route for power saving.
- Installation: Standard European in-wall gang box

Specification:

- RF : 433.92 MHz
- Power: AC - 110V ~ 240V
- AC Max. Power loading: 2A (~1/4HP)
- Use e·L·VE remote to set ID & position.

Application:

Integrate various motor curtain, gas valve, door, lock..., etc. with e·L·VE control system.

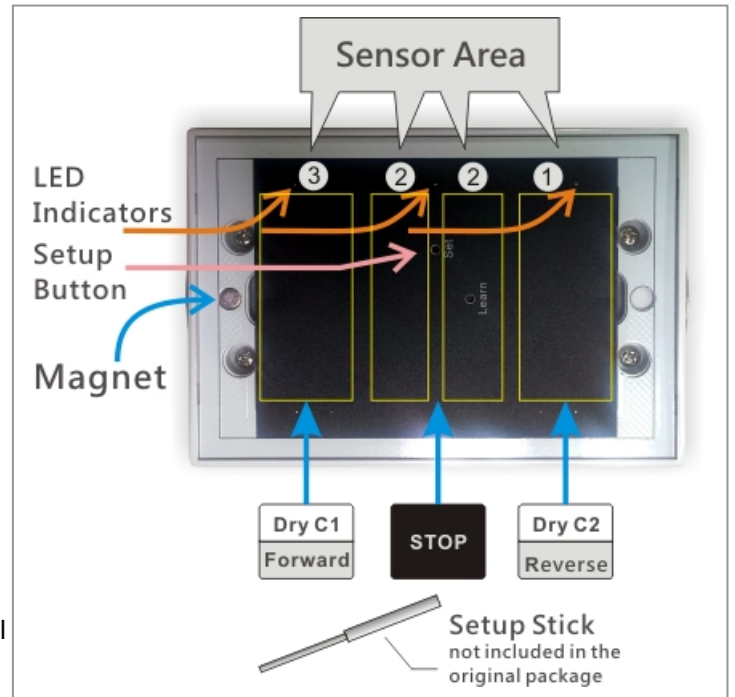


Note! Please make sure the control mode of your equipment before installation to avoid from burning down CS-330C or your equipment.

Setting

A. Set ID & Position

1. You may use any remote controller of **e·L·V·E** to input (set) ID & position to LC-330C
2. Use haptor to remove the panel.
(Please check appendix for the details)
3. Use setup stick to push & let go **SET** button, buzzer Bi a sound, LED indicator blink 3 times & turn off.
Now it's under learning mode
4. Pick up a remote controller, press a NO. key then press ON. (ex. Press Zone 1, **No.1 & ON**)
5. LC-330C will record the ID & position of the remote controller, buzzer Bi twice, LED indicator blink twice then goes off – the learning is done.
6. If you don't press any button within 10 second, buzzer will make a long Bi then exit the learning mode.



B. Route Setting : This is the way to control the period of motor spinning forward/reverse for the reason of power saving.

1. **Enter Learning Mode:** Use setup stick to push & let go **SET** button, buzzer Bi a sound, LED indicator blink 3 times & turn off. Now it's under learning mode
2. **Enter Route Learning Mode:** Use setup stick to push & let go **SET** button again. At this moment, all LEDs are ON.
3. Touch **Key 1(forward)** once, buzzer will start to count the timing with Bi in every second & 3 LEDs blink. (The count will be going till 255 seconds Max.)
4. When the count reach the timing of you need, press **STOP**.
Buzzer will Bi twice & LEDs stop blinking – the route is set.

[Ex. 1] Set the route of curtain

- a. **Enter Learning Mode**
- b. **Zero the curtain:** Press **key2 (Reverse)** till the curtain completely open/close.
- b. **Enter Route Learning Mode**
- c. **Start to set the route:** Touch **Key 1(forward)** once, buzzer & LED will start to count. Touch **STOP** as the curtain completely close/open.

[Ex. 2] Trigger other device – relay touch 1 second & recover (open)

- a. **Enter Learning Mode**
- b. **Enter Route Learning Mode**
- c. **Set Relay Touch Time:** Touch **Key 1(forward)** once, buzzer & LED will start to count. While LED blinks & buzzer Bi one time, touch **STOP** to stop the count.

C. Set Relay Always Close (Cancel Route Time)

- a. **Enter Learning Mode**
- b. **Enter Route Learning Mode**
- c. Touch **Key 1(forward)** once & touch **STOP** before Buzzer & LED start to count.

Note: This setting will makes the relay always close as you touch Forward/Reverse, unless you touch [STOP].

REMARK!

1. The **Route Time** is 1~255 second, the default is 90 second.
2. The **Route Time** of **Forward /Reverse** is same.
3. We strongly suggest LC-330C should be collocated with those product obtains limit switch function.
4. When all settings are completed. There are 30 seconds window for the touch sensor re-scan after front panel mount on. After 30 seconds, you may touch & control the panel normally.

Operation

1. **Forward/Reverse:** Touch [Forward]/[Reverse] the relay will close according the time you've set.
2. Press [Forward]; while the relay is still closing, touch [STOP] or [Reverse], relay will open.
3. Press [Reverse]; while the relay is still closing, touch [STOP] or [Forward], relay will open.
4. Follow [2.] & [3.], touch [Forward] or [Reverse], LC-330C will restart route counting till the action is interrupted or the time is up & the relay is recovered to the open mode.
5. **Reverse Code control:** some of e2-LiVE's remote controllers can transmit reverse code to control LC-330C(ex. BT-100, CS-330T, MS-X0T, LS-X0T..., etc.) which can use only one key to control LC-330C. For example, One press the remote button, LC-330C the [Forward] relay is closed, will act reversely. Press the same remote button again, the relay will open. Press the same remote button, [Reverse] relay will close...
6. Control with an e2-LiVE remote controller: a.) choose Zone b.) choose position c.) press ON/OFF to control.
Note: Remote controller has no **STOP** button, we use ON/OFF to remote control LC-330C.
Ex.: Press **ON** – LC-330C's the **Forward** relay is closing, press **OFF** the relay will open. Press **OFF** again the **Reverse** relay will close...

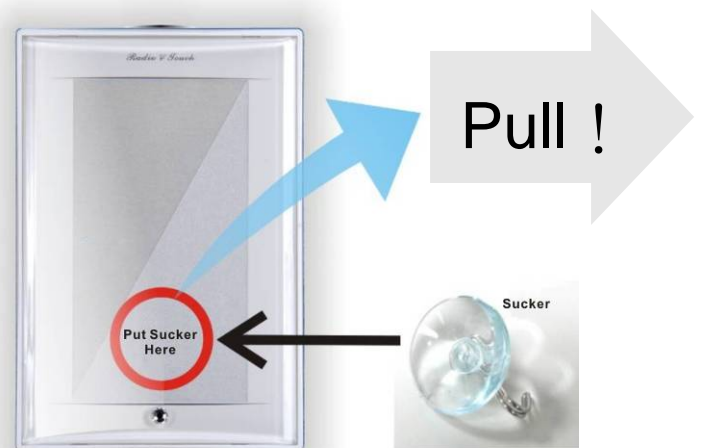
Annex A : Install / uninstall Panel

[Uninstall]

Put the sucker on the marked spot, press to squeeze out air & make sure the sucker is fixed, then pull out of the panel.

[Install]

There are 2 latches on the top of the panel, & a crystal in the buttom. there is 2 slot for those 2 latches & a magnet for crystal. PLS make sure the direction correctly. Slide latches into slots first then press the crystal side into the magnet side till the panel sink completely.



FCC WARNING

This device complies with Part 15 of the FCC Rules. Operation is subject to the following two conditions:

- (1) This device may not cause harmful interference, and
- (2) this device must accept any interference received, including interference that may cause undesired operation.

NOTE 1: Any changes or modifications to this unit not expressly approved by the party responsible for compliance could void the user's authority to operate the equipment.