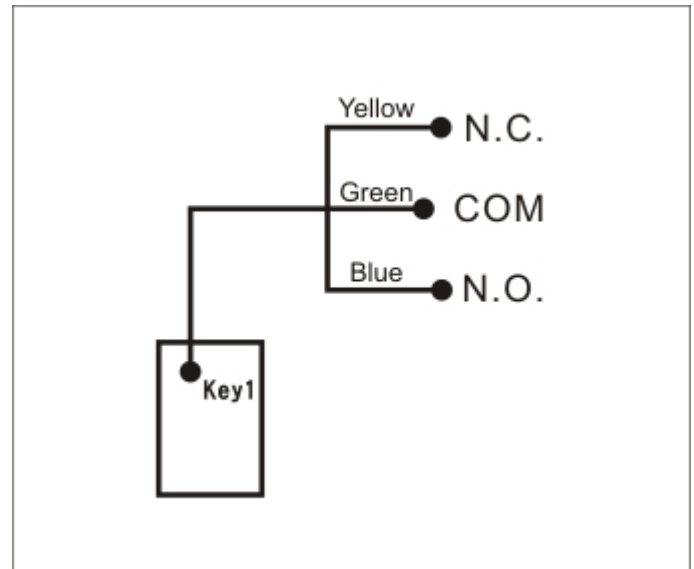


Model No. : LC-X0T

Features :

- Multi-spot mobile remote control
- RF transmit no wiring necessary
- 2,3,4,6 touch keys to be programmed easily.
- One touch to transmit single or multi direction
- One extra code to activate a scene controller nearby. (Scene 1~10 for assigned or disable)
- N.C. / N.O. dry contact input (Digital Input) to trigger key 1 content
- Looks like LC series SW, can be paste on a spot where there has no gang box to take control SW, curtain & appliances.



Specification :

- RF Radio Frequency: 433.92 MHz
- Power Input : AC - 110V ~ 230V
- Use an **RC-07** to program a scene & input to a key to store.
- If to program a key to become a 2-way SW button, the corresponding SW should be a standard e2-LiVE SW that can be a 2-Way SW control system.

IR Output for scenes' actions output



Function Descriptions

1. Forewords

A. Each key of LC-X0T can be programmed as a(n):

- 2-Way SW:** to store one single action, such as [1], [ON] (Light No.1, ON). The key become a 2-way SW to every SW set as **Light No.1**.
- Scene button:** to store up to **36** actions including dimming.
- Appliances Activate Button:** touch this key to activate a scene, stored in a scene controller nearby (ex. RP-10,12, HC-12) to accomplish a series control of home appliances and lightings. This function can be disabled.

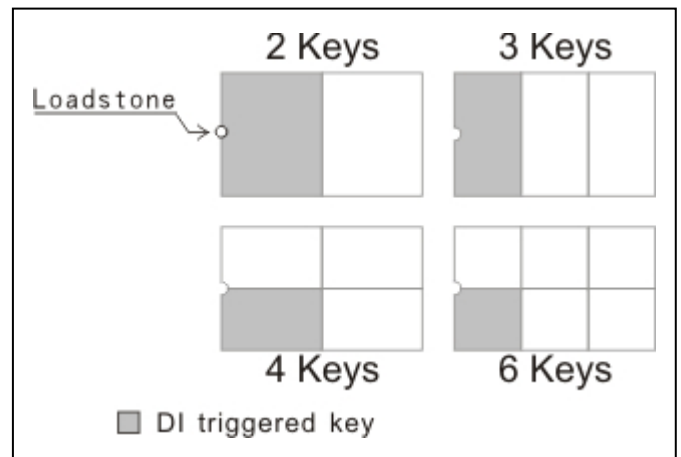
B. **DI Input:** LC-X0T provide one N.C./N.O. input wire to accept trigger signal from various sensors, to carry out a series scene control action pre-stored in **key 1**.

NOTE: 2-Way or scene control function is alternative, the Appliances Activation function can be coexistence & Dry Contact input can only activate key 1 scenes.

LC-X0T Setting



Sense Zones & DI key's Descriptions



※ Please see appendix for the details to take apart / dress up the front panel.

2. 2-Way SW Setup

A. Preparation:

Pre-set a **Macro** as a single action as [X], [ON] on a scene button of **RC-07**.

- [X] is the target light no. to be controlled as **2-Way**; ex.: the target light no. is "3".

then we need to set a scene [3] [ON] in a scene button on **RC-07**.

(please refer to the user manual of **RC-07** to obtain the detail setup procedures.)

B. Procedures

0. Practice to feel the press of the **setup button** with setup stick (**A click**)
1. **Touch & hold** a button & press the **setup button (press & let go)**, LED flash **3 times** means it's under **setting mode** now. You have **7 sec.** to input command by **RC-07**.
2. Pick up an **RC-07**, which has **preset a scene**, point its **IR Digital Output** to the **Setup button**, within **5cm** distance & **5 Sec.** at least.
3. When the **LED flash twice**, it means the process is completed, please put away **RC-07**.
The **2-Way** macro input is done.
4. Continue to set the next key or test the key function you've just set.

C. Control: Touch the key to control in 2-Way mode.

3. Scene Control Setup:

A. Preset a scene, which contains **36 actions or less**;

(ex.: "Light no.1 – ON", "Light no.2 – ON"..., 36 actions are the most).

Follow the procedures as "**2-Way Setup**" to input this macro to any key of **LC-X0T**, to accomplish the setting.

B. Control: Touch a key to start a **macro** & touch any key to **break off** the action.

4. Appliances Activation Setup

A. Procedure:

a. **Press & hold** a key, punch **Setup Button** with a **Setup Stick** (punch – feel a click & let go), after LED flash **3 times & off**, use **setup stick** to punch the **setup button** again, & observe the LED **blinking**.

b.

The Sequence of Blinking	1st	2nd	3rd	4th	5th	6th	7th	8th	9th	10th	Constant ON for 1 Sec.
Macro No.	1	2	3	4	5	6	7	8	9	10	Clear

C. **As above table**, press any key as LED blinking sequence no. indicates the macro you want to assign. & it will confirm the assignment with **blinking LED** with **times** as the **macro no.** you've choose. **ex.:** If the linked macro **no. 7**, is what you need; when the LED **blinks the 7th**, touch **any key** on **LS-330T panel**, & the LED will blink **7 times** to confirm the **macro** you've selected.

At last, the 3 LED will blink 2 times together to leave the setting mode.

- If you touch any key as the LED ON for 1 Sec., it means "Clear", no linked macro code assigned in this setting.
- The setting cycle is once at a time, if you do nothing under setting mode. The system will be recovery after LED blinks 10 times & constant ON for 1 Sec.

B. Control:

- a.) Touch the key to send a **Linked Macro Activating Code** to a **controller** nearby, after it finished all its preset **2-Way / Macro Control** action.
- b.) Touch any key to **break off** the action as LC-X0T is transmitting actions.

Note:

1. This product should be programmed by RC-07.
2. Please contact the distributor near you to obtain correct/updating of product information.
3. Please refer to each manual of HC-12/RP-12/RP-10 for the details of scene (macro) setting.

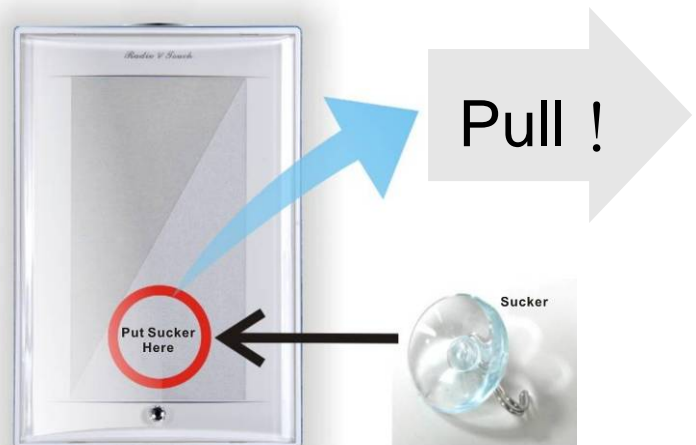
Annex A : Panel Install / uninstall

[Uninstall]

Put the sucker on the marked spot, press to squeeze out air & make sure the sucker is fixed, then pull out of the panel.

[Install]

There are 2 latches on the top of the panel, & a crystal in the bottom. there is 2 slot for those 2 latches & a magnet for crystal. PLS make sure the direction correctly. Slide latches into slots first then press the crystal side into the magnet side till the panel sink completely.



FCC WARNING

This device complies with Part 15 of the FCC Rules. Operation is subject to the following two conditions:

- (1) This device may not cause harmful interference, and
- (2) this device must accept any interference received, including interference that may cause undesired operation.

NOTE 1: Any changes or modifications to this unit not expressly approved by the party responsible for compliance could void the user's authority to operate the equipment.