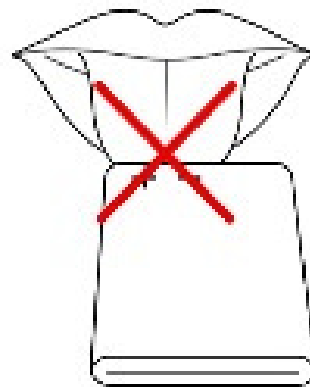
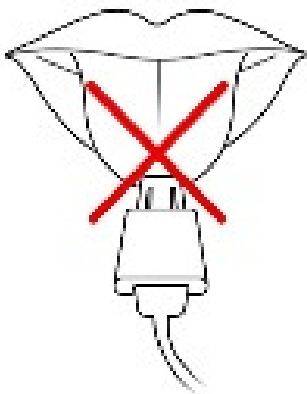


1 Taking care of your device

Your device is a product of superior design & craftsmanship and should be handled with care: The following recommendations will help protect your phone:

- Keep the device dry. Precipitation, humidity, and all types of liquid or moisture may contain minerals that can rust electronic circuits. If your device gets wet, remove the battery and refrain from turning on device. Wipe it with a dry cloth and take it to the service center.
- Do not store the device under extreme temperatures; it can damage the 77
- Do not use or store device in dusty and dirty areas; the electronic components may be damaged.
- Do not attempt to open device in any way other than instructed in this guide. Repairs attempted by an entity other than designated service agent/center will void warranty.

Licking the battery or charger is strictly prohibited; saliva is more corrosive than water. Residual saliva may short-circuit phone and damage its motherboard, causing the device to become inoperable; battery & charger may also be damaged in the process.



WARNING:

Licking USB plug or metallic battery component is strictly prohibited.

- Do not drop, knock, or shake device. Rough handling can disrupt internal circuit boards and fine mechanical parts.
- Do not use harsh chemicals, cleaning solvents, or strong detergents to clean the device. Use a soft and dry cloth to wipe down surfaces.

Battery & charger safety

- Do not place battery in fire, explosion may occur. With concern for the environment, please abide local laws & ordinances in battery disposal.
- Only use original battery, charger, and accessories applicable to the specific mobile model. Failure to do so voids the warranty and may result in a hazard.
- Power off mobile prior to testing its charger. If charger malfunctions, off-mode will prevent damage to the motherboard.
- Please keep the charging mobile away from small children.
- Do not touch charger or mobile with wet hands; it's hazardous and may damage electronic parts.

WARNING:

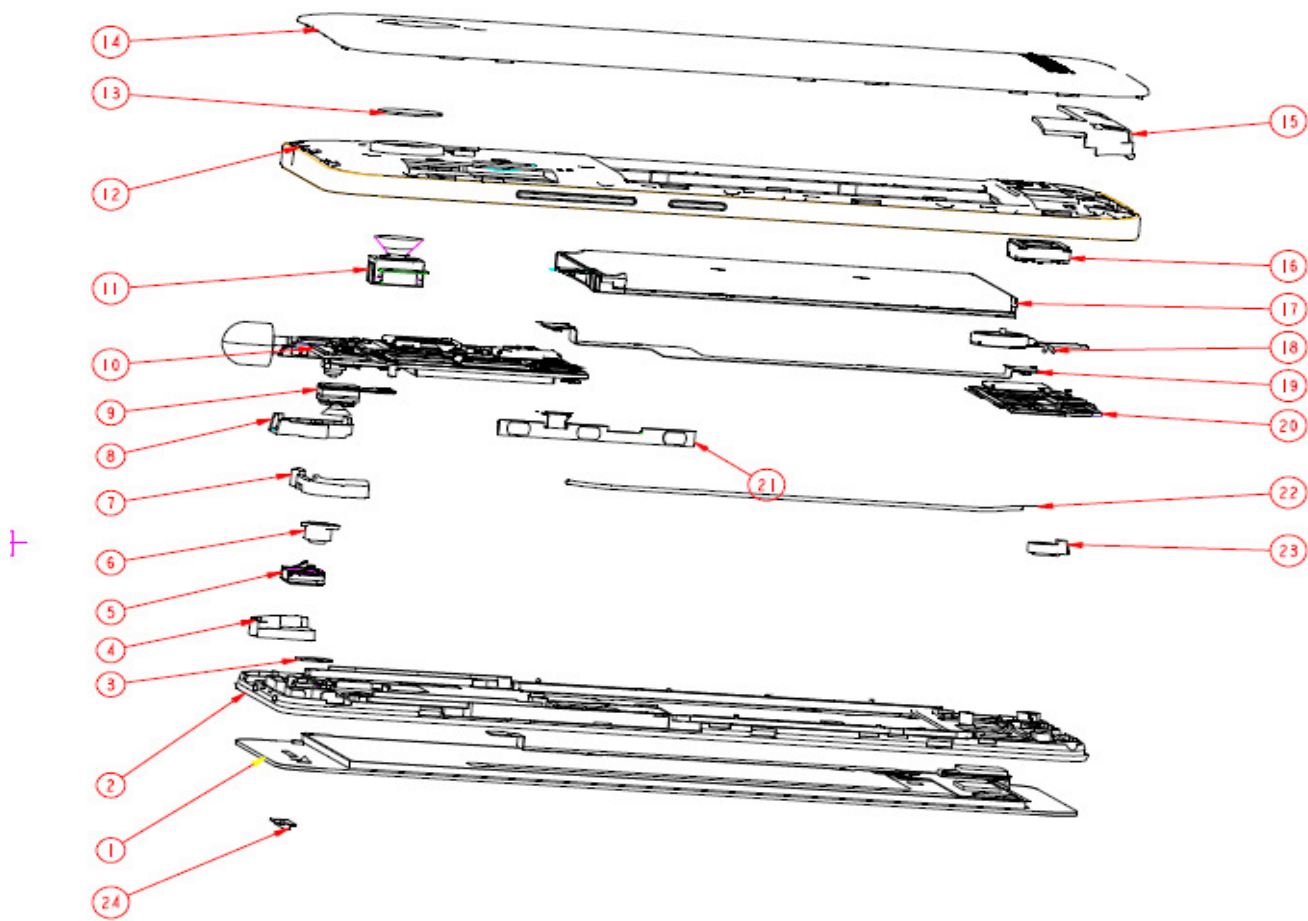
- Risk of explosion if original battery is replaced.
- Tampering with mobile OS and ROOT voids warranty and may cause software instability.

2 Know your phone

Position of Keys

1. Earphone plug	2. Receiver
3. USB port	4. Light/proximity sensor
5. Front camera	6. Microphone
7. Rear camera	8. Flashlight
9. Speaker	10. Volume button
11. Power button	

3 Exploded view of all parts



Description

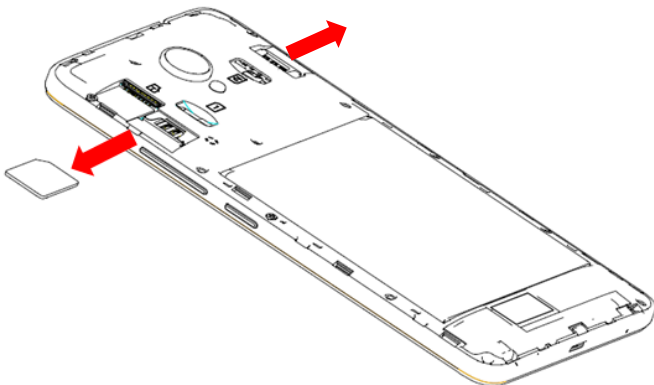
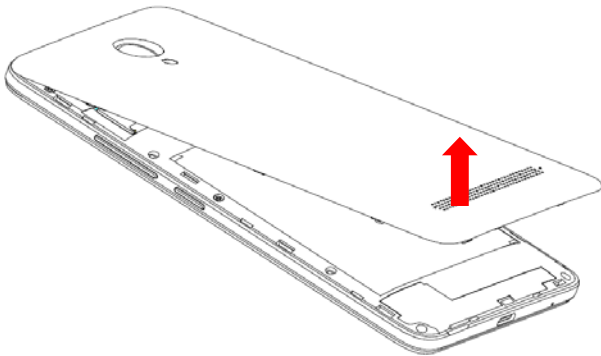
1. 00_W4_CTP	2. 00_W4_A
3. 00_W4_CTP_CAM_SPONG	4. 00_W4_GPS_FRAMER_ANT
5. 5_W4_REC	6. 00_W4_IR_RUBBER
7. 00_W4_WIFI_ANT	8. 00_W4_AUDIO_RUBBER
9. 3_W4_FRONT_CAM	10. 0_W4_MAIN_PCBA
11. 4_W4_BACK_CAM	12. 00_W4_B
13. W4_CAMERA_LENS	14. W4_BAT_TECNO
15. W4_GSM_ANT	16. 6_W4_SPK
17. 8_W4_BATTERY	18. 7_W4_MOTO
19. 10_W4_LINK_FPC	20. W4_KB_PCB
21. 9_W4_KEY_FPC	22. W4_CABLE_LINK
23. 00_W4_MIC_RUBBER	24. 00_W4_REC_DEC

4 SIM / SD card installation

1. Power off mobile.
2. Refer to the following picture for SIM / SD card installation.

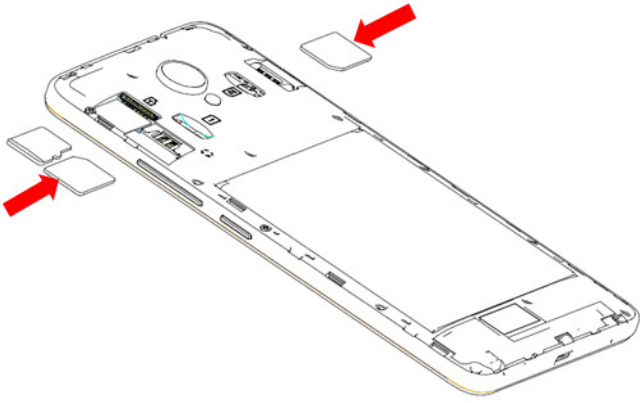
Removing the cover and SIM cards.

1. Unclip the cover.
2. To remove the SIM cards, press and slide it out.



Installing the SIM cards and cover.

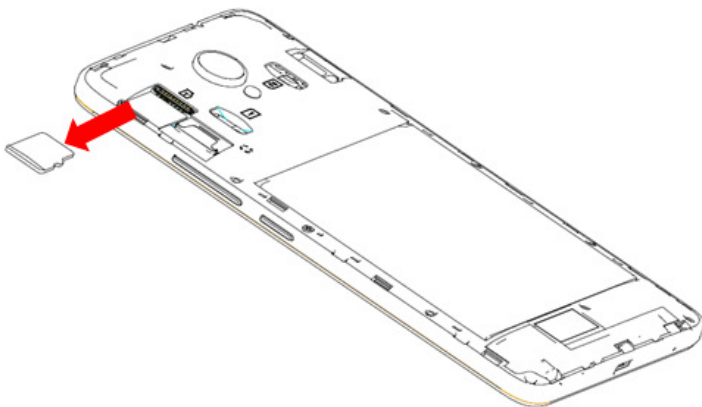
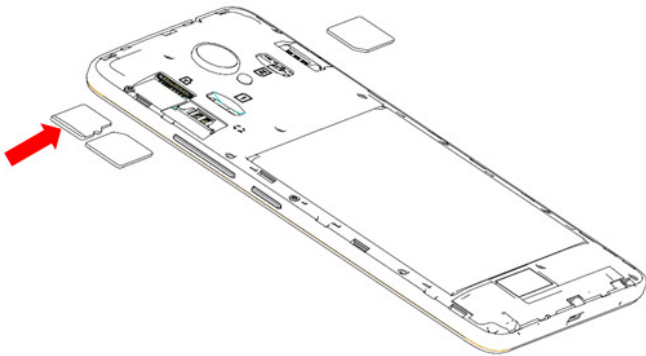
1. You must insert your SIM cards to make phone calls.
2. To install SIM cards, place the SIM cards with chip facing downwards, and then slide it into its slot. Make sure that it is correctly inserted.



3. Close the phone cover.

Installing and removing the microSD card.

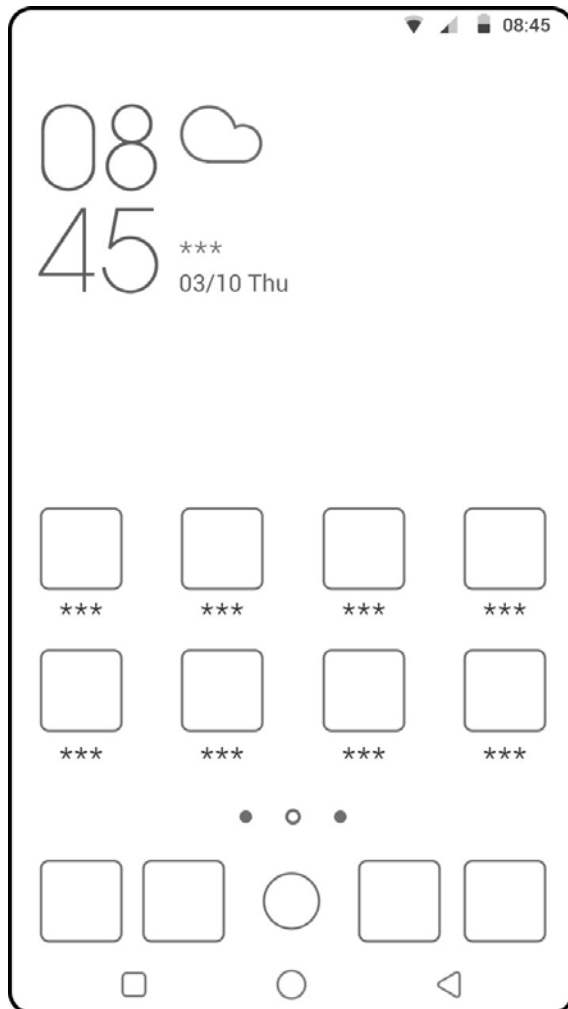
1. Insert the external microSD card into the slot with the gold contact facing down. To remove the external microSD card, gently press and slide it out.



2. In addition, regularly removing or inserting the SD card may cause the phone to restart.

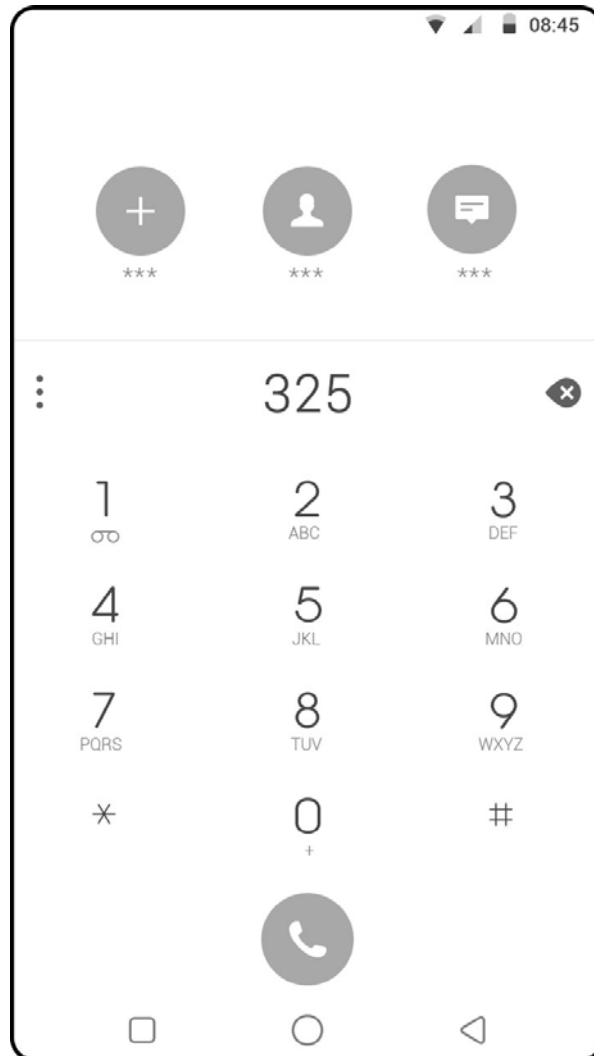
5 Homescreen

Home screen showcases frequently used apps, you can also display ubiquitous information such as time, weather (third-party app required), date, etc.



6Dialing

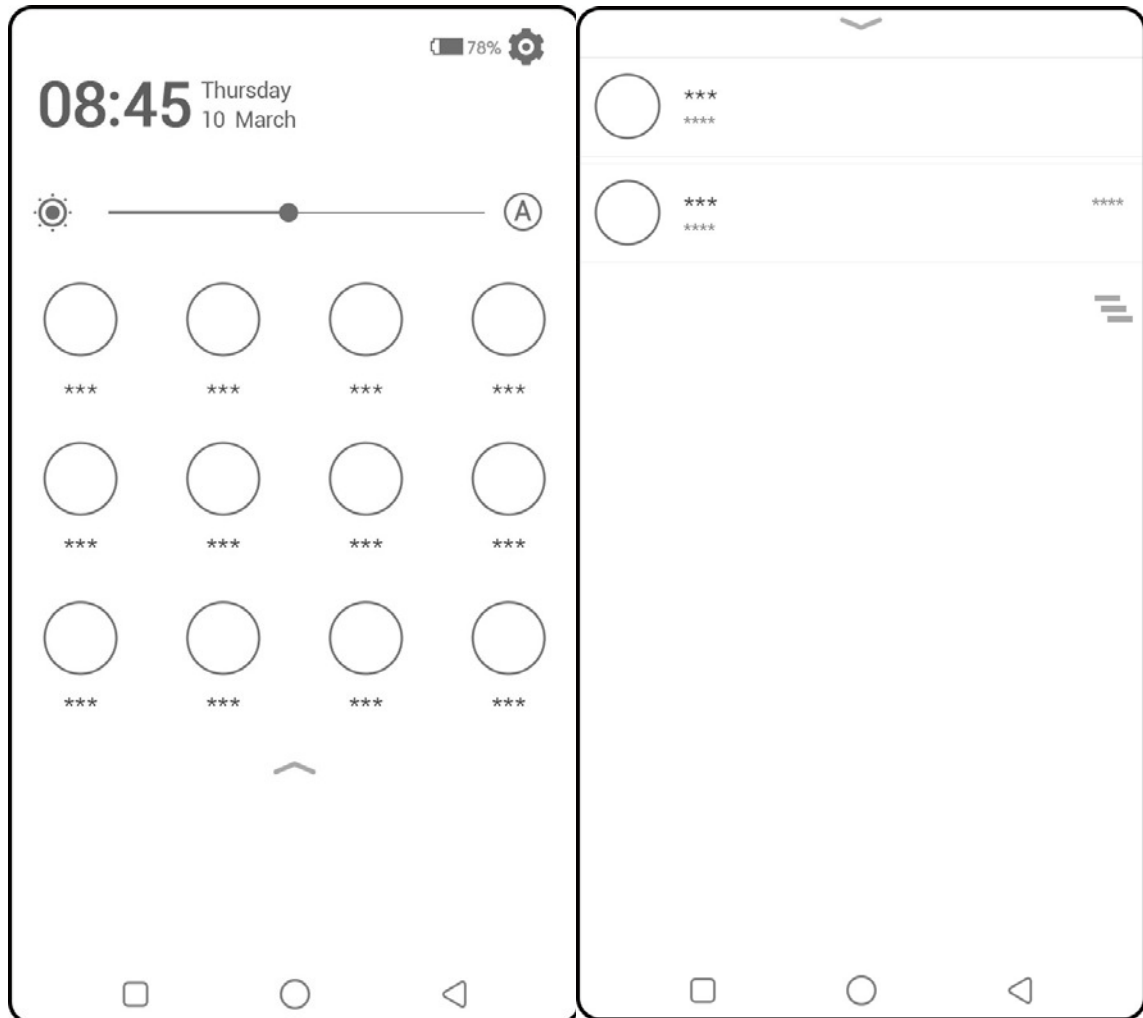
Tap the phone icon to open call interface. Enter contact number via keypad to start a call. The keypad interface also enables functions such as texting and contact storage.



7 Notification & function toggle

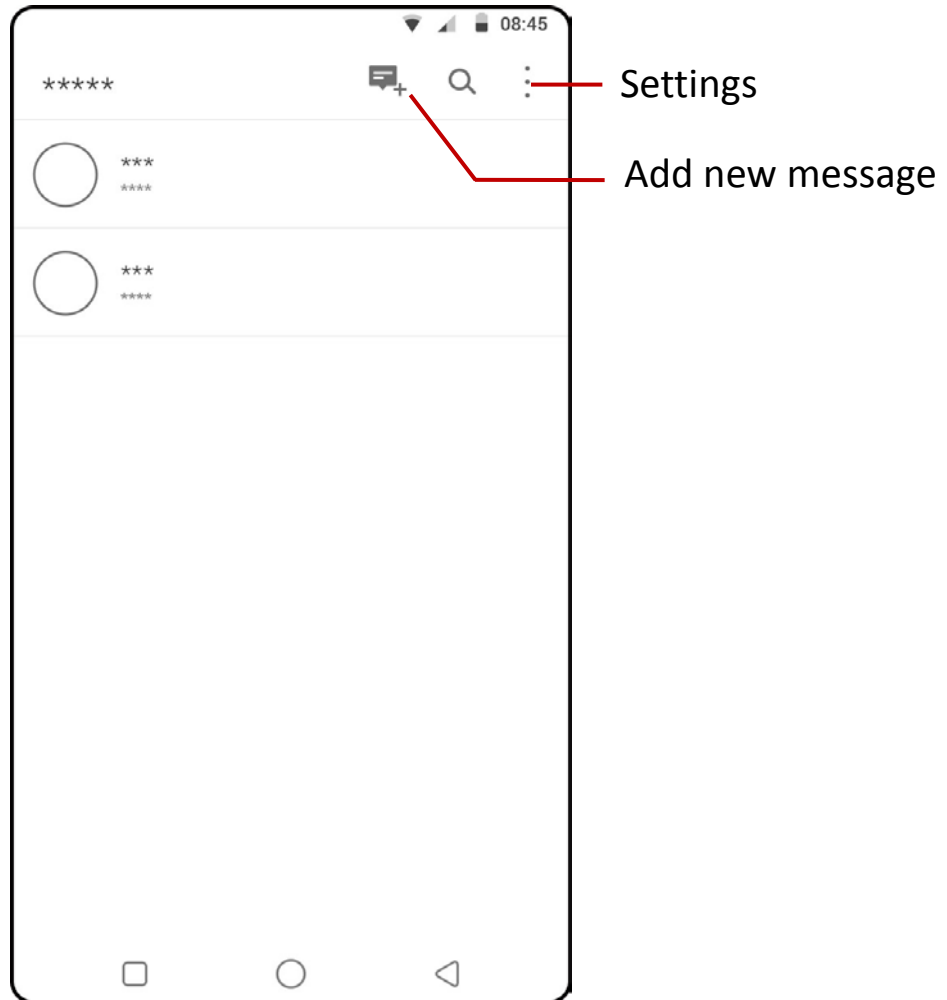
The notification screen displays new information & events; simply tap the notification to access its detailed content.

The function-toggle screen lists commonly used functions and their virtual switches. Tap a switch to quickly turn a function on/off.



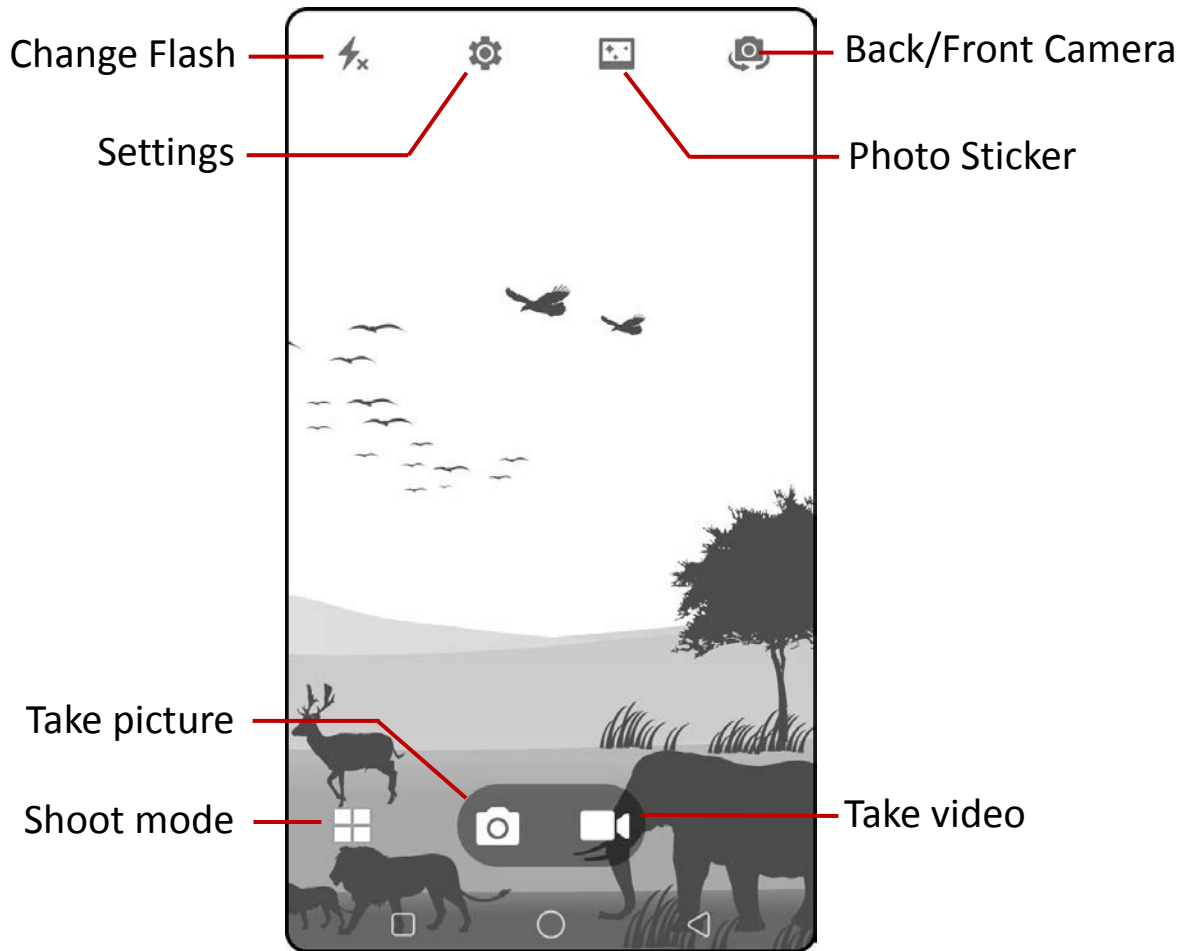
8Messages

The message function sends plain or multimedia texts to your friends. Tap a message to view its content. Tap the “Compose new message” button to start composing a message and send it to designated contact.



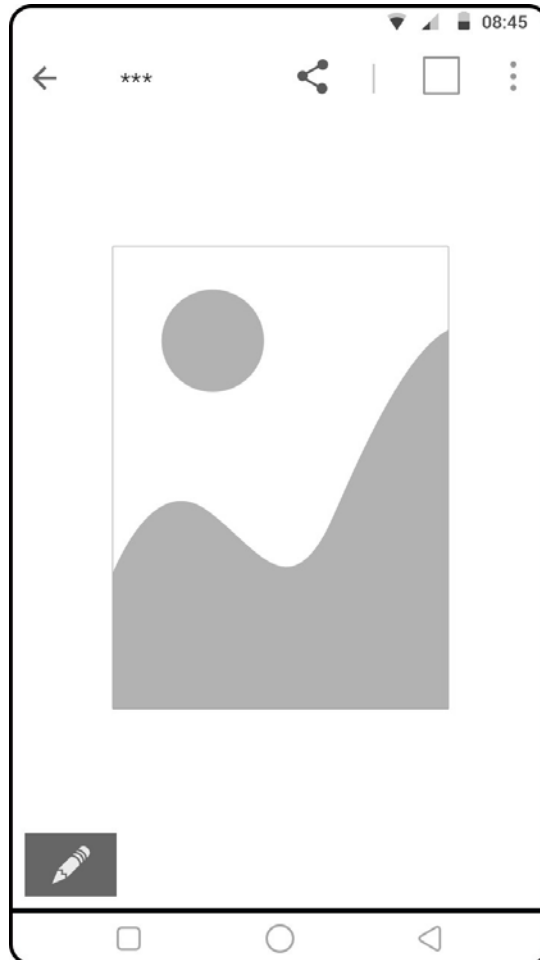
9Camera

The camera function captures your surroundings via the front or rear camera.



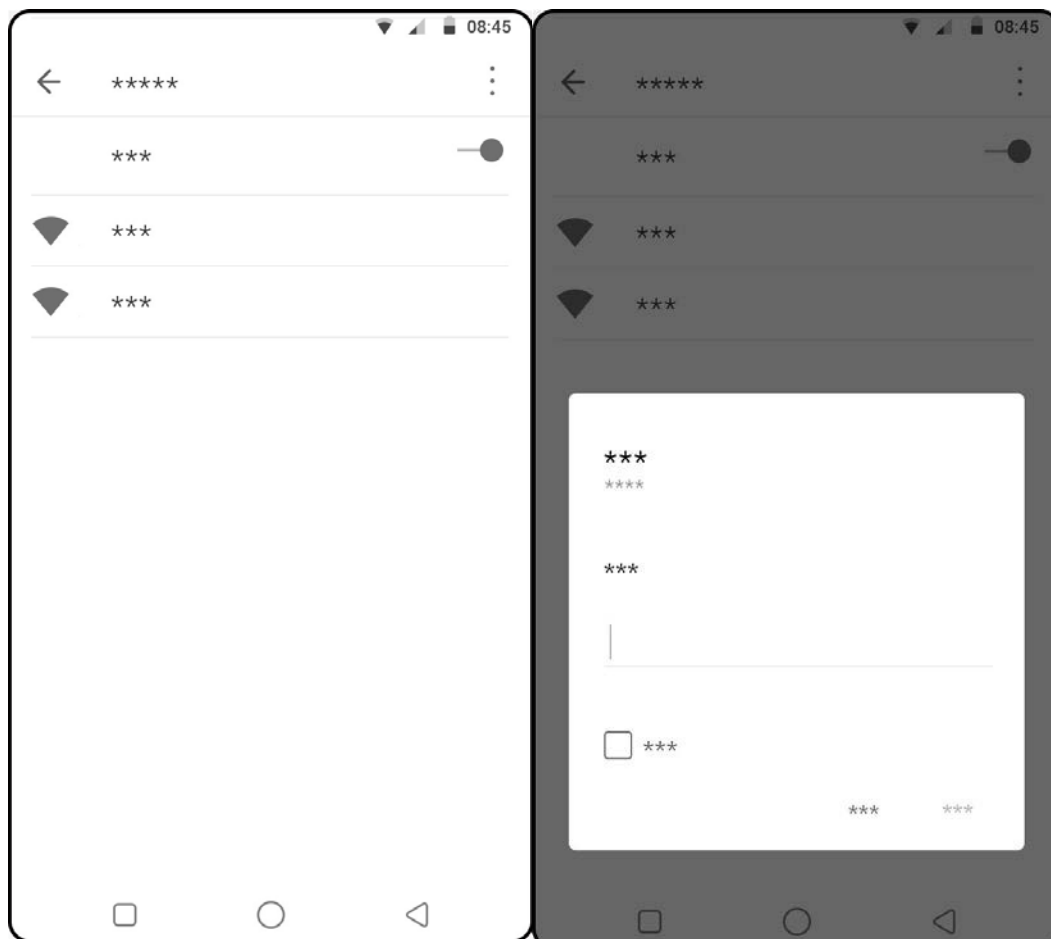
10Gallery

The gallery can be used to browse images and photos from mobile or SD card storage; editing function can be performed. Images can be designated as wallpaper or contact avatar. The sharing function allows images to be shared with friends via Bluetooth and MMS, etc.



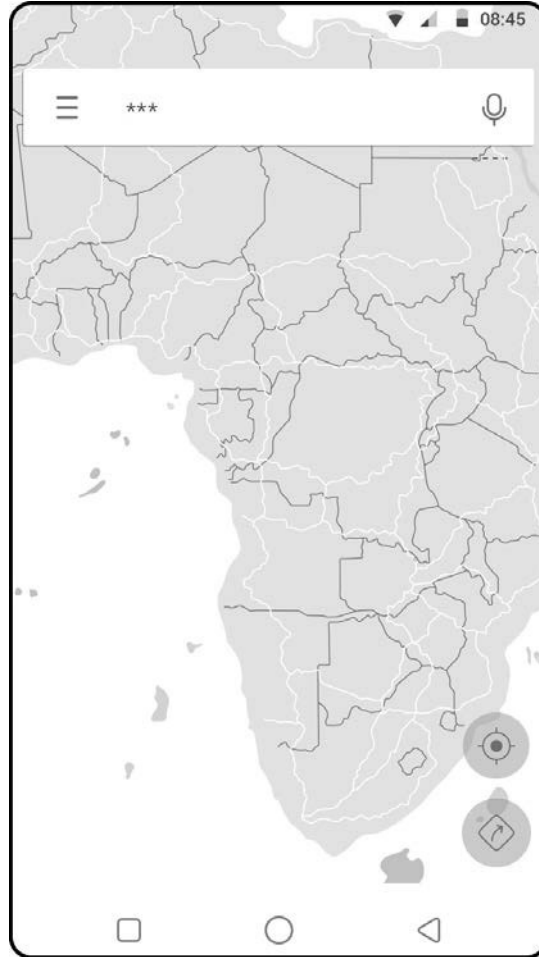
11Wi-Fi

Enabling Wi-Fi grants access to local hotspots and allows you to browse Internet. Private networks will require a password.



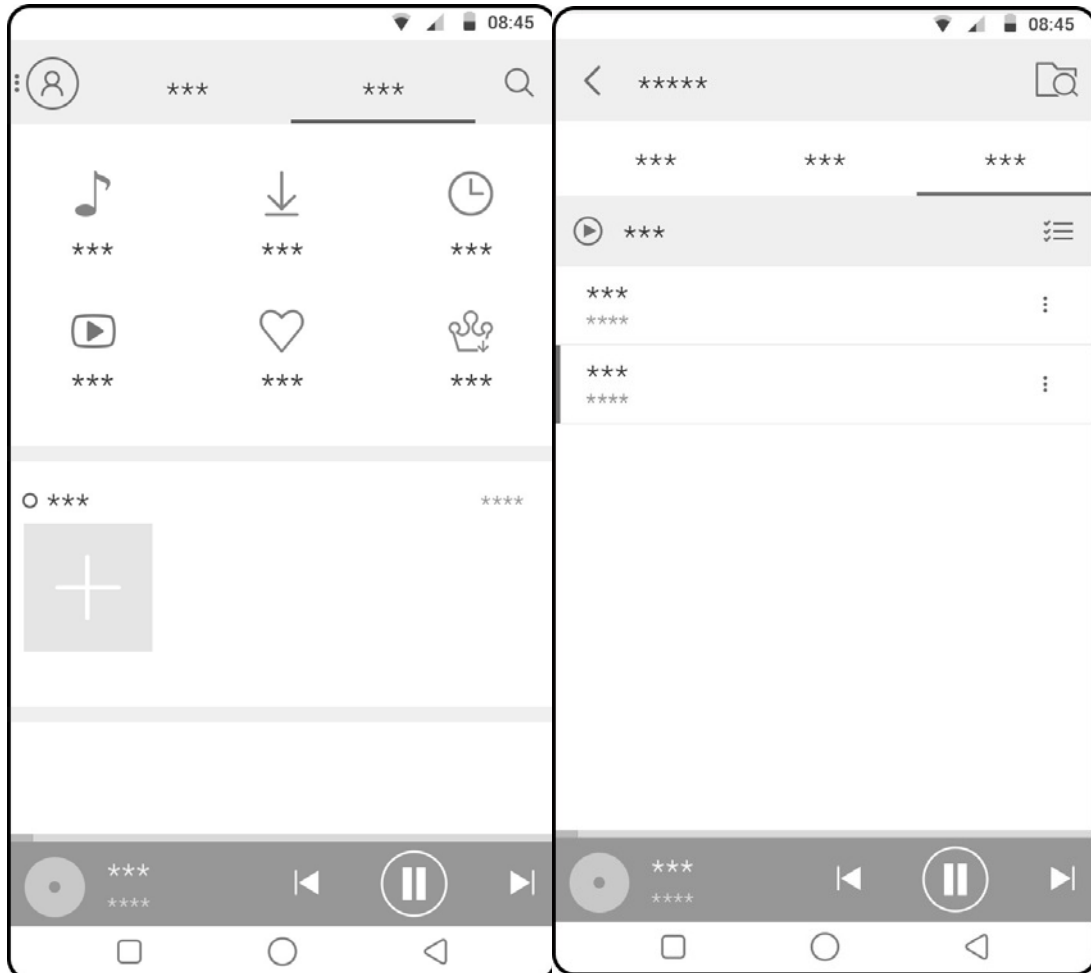
12Map

“Google Maps” provides users with complete GPS & navigation services. It can display maps in terrain or terrain contour modes.



13 Music

Music playlist displays all relevant files saved on the mobile or SD card storage. You can play, pause, and switch between tracks through the music control panel. Volume control is accessed via side buttons.



14 Factory data reset

“Factory data reset” resets all configurations to their default state. Internal mobile storage is cleared of all data including apps, photos, music, videos, mail, contacts, etc. This procedure may take a long time. Please wait patiently for mobile to restart and do not power off.

WARNING:

Reset factory settings as a last resort. Once activated all user data & configurations are deleted and cannot be restored.

15SAR declaration

Specific Absorption Rate (SAR) Certification

THIS DEVICE MEETS INTERNATIONAL GUIDELINES FOR EXPOSURE TO RADIO WAVES

Your mobile device is a radio transmitter and receiver. It is designed not to exceed the limits for exposure to radio waves (radio frequency electromagnetic fields) recommended by international guidelines. The guidelines were developed by an independent scientific organization (ICNIRP) and include a substantial safety margin designed to assure the safety of all persons, regardless of age and health.

The radio wave exposure guidelines use a unit of measurement known as the Specific Absorption Rate, or SAR. The SAR limit for mobile devices is 2.0 W/kg. Tests for SAR are conducted using standard operating positions with the device transmitting at its highest certified power level in all tested frequency bands. The highest SAR values under the ICNIRP guidelines for this device model are:

Maximum SAR for this model and conditions under which it was recorded

Head	0.588 W/Kg
Body	0.451 W/Kg

During use, the actual SAR values for this device are usually well below the values stated above. This is because, for purposes of system efficiency and to minimize interference on the network, the operating power of your mobile device is automatically decreased when full power is not needed for the call. The lower the power output of the device, the lower its SAR value.

A body-worn SAR test has been performed on this device at a separation distance of 1.5cm. To meet RF exposure guidelines during body-worn operation, the device must be positioned at least 1.5cm away from the body.

Organizations such as the World Health Organization and the US Food and Drug Administration have suggested that if people are concerned and want to reduce their exposure, they could use a hands-free accessory to keep the wireless device away from the head and body during use, or reduce the amount of time spent using the device. For more information, visit

www.tecno-mobile.com and search for your device with the model number.

16 Restarting the phone

If your phone is no longer responding, press and hold the power button for at least 10 seconds to reboot it.

Note: Do not perform this operation if the phone is charging. Unplug the charger first.

17Warning

Changes or modifications to this unit not expressly approved by the party responsible for compliance could void the user's authority to operate the equipment.

This device complies with Part 15 of the FCC Rules. Operation is subject to the following two conditions: (1) this device may not cause harmful interference, and (2) this device must accept any interference received, including interference that may cause undesired operation. changes or modifications not expressly approved by the party responsible for compliance could void the user's authority to operate the equipment.

RF Exposure Information:

The SAR limit of USA (FCC) is W/kg averaged over one gram of tissue. Device Types (FCC ID: 2ADYY-W4) has also been tested against this SAR limit. The highest SAR value reported under this standard during product certification for use when properly worn on the body is $0.854 W/kg$ and for head is $0.526W /kg$. Simultaneous RF exposure is $1.29 W/Kg$.

This device was tested for typical body - worn operations with the back of the handset kept 10 mm from the body. To maintain compliance with FCC RF exposure requirements, use accessories that maintain amm separation distance between the user's body and the back of the handset.

The use of belt clips, holsters and similar accessories should not contain metallic components in its assembly.

The use of accessories that do not satisfy these requirements may not comply with FCC RF exposure requirements, and should be avoided.

NOTE:

This equipment has been tested and found to comply with the limits for a Class B digital device, pursuant to Part 15 of the FCC Rules. These limits are designed to provide reasonable protection against harmful interference in a residential installation. This equipment generates, uses and can radiate radiofrequency energy and, if not installed and used in accordance with the

instructions, may cause harmful interference to radio communications. However, there is no guarantee that interference will not occur in a particular installation. If this equipment does cause harmful interference to radio or television reception, which can be determined by turning the equipment off and on, the user is encouraged to try to correct the interference by one or more of the following measures:

- Reorient or relocate the receiving antenna.
- Increase the separation between the equipment and receiver.
- Connect the equipment into an outlet on a circuit different from that to which the receiver is connected.
- Consult the dealer or an experienced radio/TV technician for help.

This device and its antenna(s) must not be co-located or operation in conjunction with any other antenna or transmitter.