

Install Guide

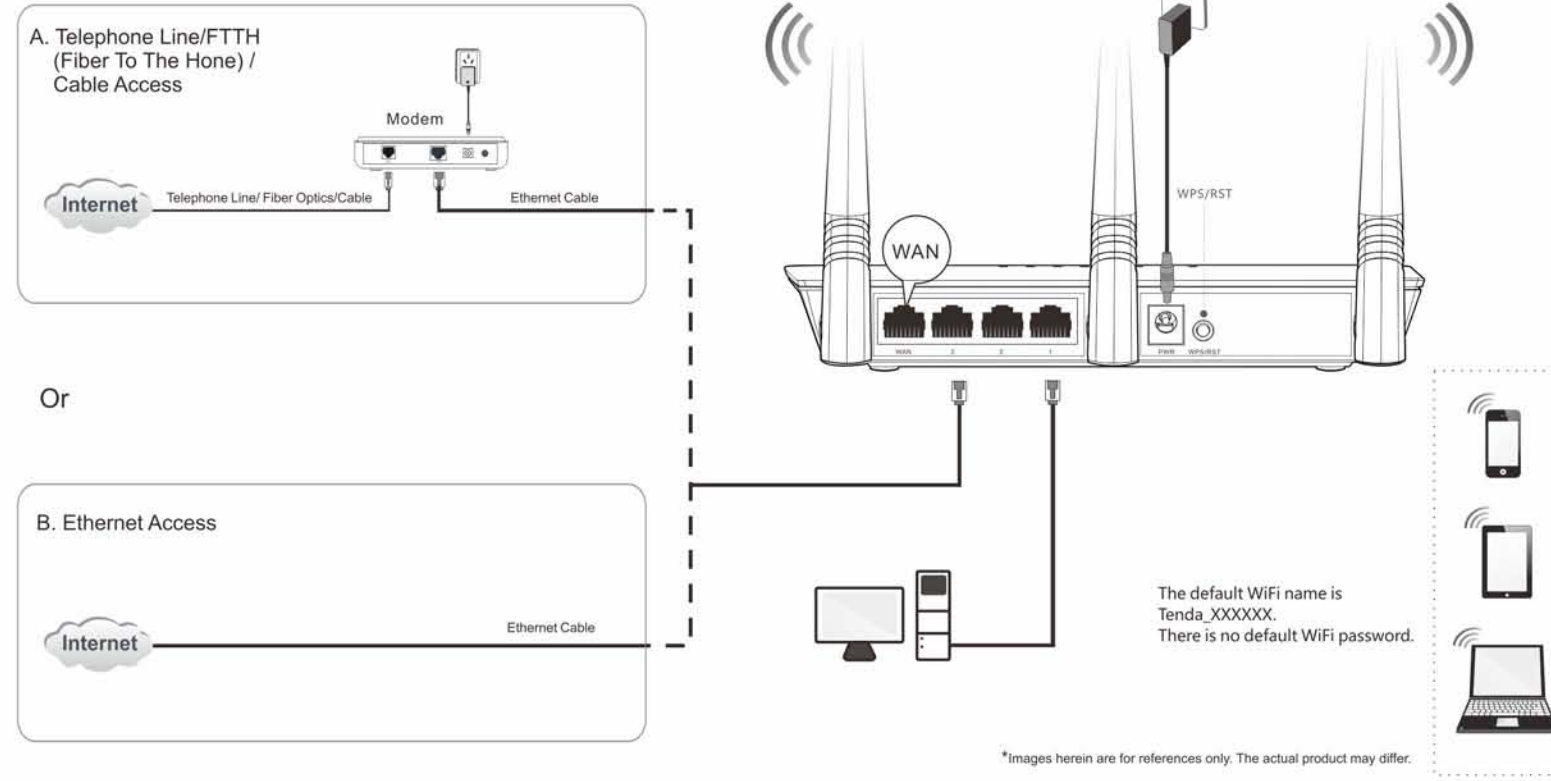
You can get the User Guide online at www.tenda.com for featured settings of the router.

Package Contents

- Wireless Router*1
 - Power Adapter*1
 - Ethernet Cable*1
 - Install Guide*1
- If any item is incorrect, missing or damaged, please keep the original package and contact your dealer for immediate replacement.

1 Connect Your Router

Select Telephone Line/FTTH/Cable Access or Ethernet Access according to the type of WAN medium your ISP provided.



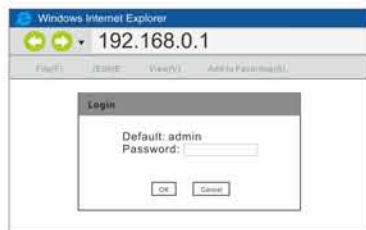
LED Indicator	Status	Description
SYS	Blinking	The system is working fine.
	Off	There is no power supply, or the router malfunctions.
WiFi	Solid	WiFi is enabled.
	Blinking	The Router is sending or receiving WiFi data.
	Off	WiFi is disabled.
1/2/3	Solid	The LAN port is well-connected.
	Blinking	The LAN port is transmitting data.
	Off	No link is detected on the LAN port.
WAN	Solid	The WAN port is well-connected.
	Blinking	The WAN port is transmitting data.
	Off	No Ethernet cable is connected to the WAN port.
T	T	For decoration
WPS	Solid	WPS is enabled, or a WPS connection is established.
	Blinking	The Router is performing WPS negotiation to a client device, or transmitting data.
	Off	WPS is disabled.

Button/Interface	Description
WPS/RST	Press and hold it for about 8 seconds and then release it (all LED indicators will light up once after you release it) to reset the router to factory default settings.
	Press and then release it to enable the WPS feature. Within 2 minutes, enable the wireless client's WPS feature to establish WPS connection.

- Tips**
- To configure your router, connect your PC to the router wirelessly or via an Ethernet cable. For the specific steps of joining in the WiFi, please refer to **Appendix 1 Join Your WiFi**. The default WiFi name is Tenda_XXXXXX, where XXXXXX represents the last six MAC address of the router which is shown on the bottom label.
 - Re-connect to the wireless router's WiFi name with the new WiFi password if you change them.

2 Configure Your Router

1. Open a web browser, say IE, type **192.168.0.1** in the address bar, and tap **Enter** on the keyboard. The screen below will appear. Type the default login password **admin** in the **Password** box, and click **OK**.



Tips
If the login page does not appear after the operation above, please refer to the solutions in **FAQ > Q2**.

2. Select a connection type and configure it according to the features and instructions in the form on the right.

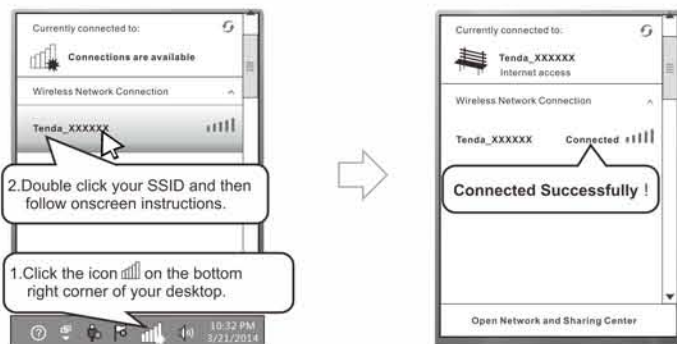


*For other Internet connection types, click **Advanced > Internet Connection Type**.

Internet Connection Type	Features	Instructions
PPPoE	Select PPPoE , if you need dial up with username and password to access the Internet without using a router.	Select PPPoE , type the PPPoE Username and Password provided by ISP, customize a security key to secure your wireless network, and click OK .
DHCP	Select DHCP , if you access the Internet as soon as you plug the Ethernet cable into your computer.	Select DHCP , customize a security key to secure your wireless network, and click OK .

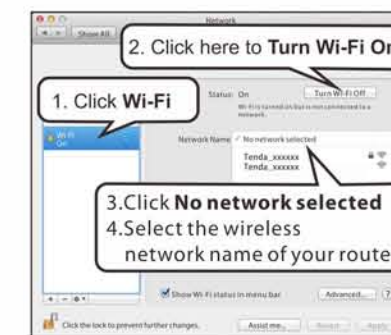
Appendix 1 Join in Your WiFi

Windows 7

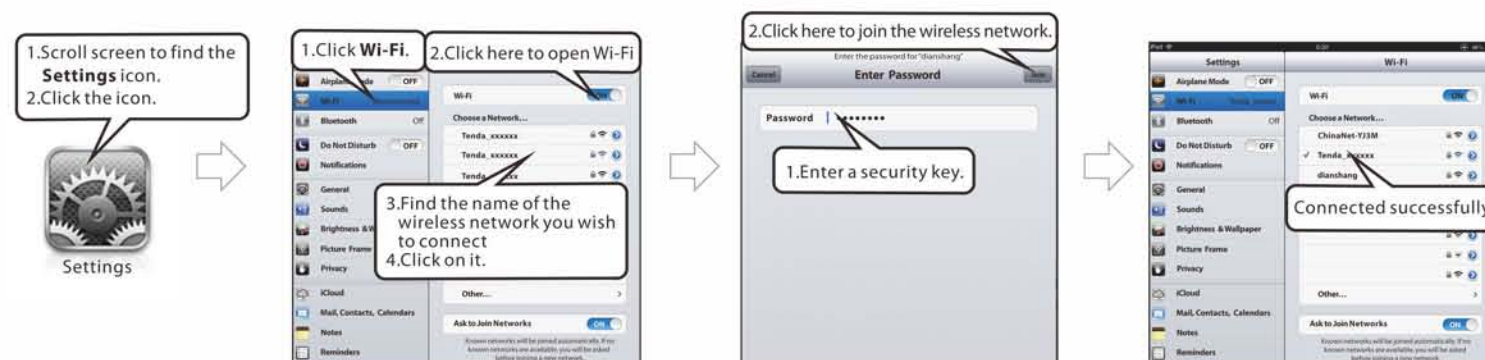


Mac

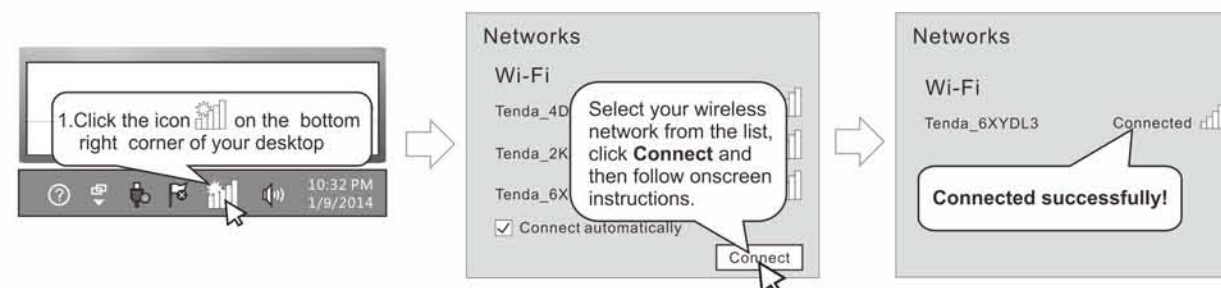
Click **Apple** -> **System Preferences**.



iPhone/iPad

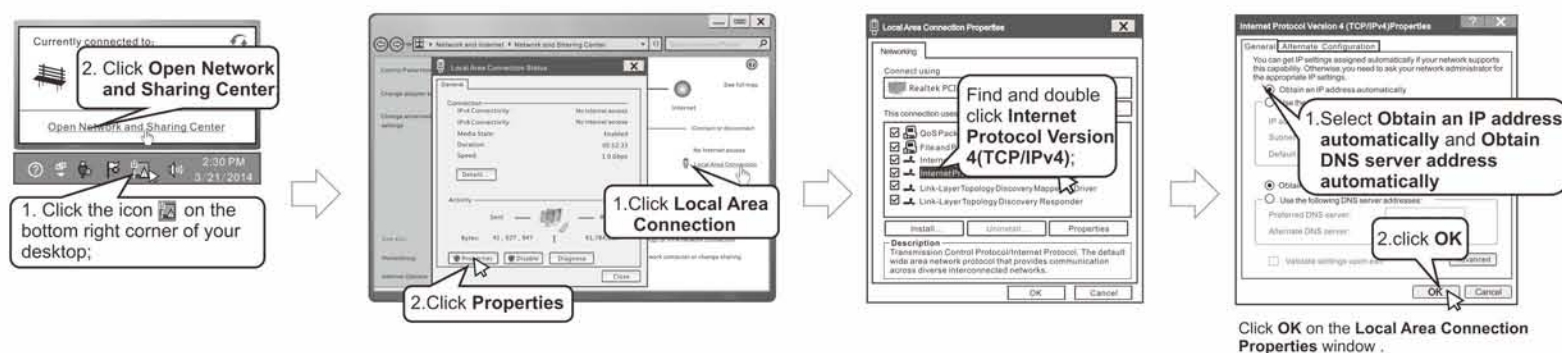


Windows 8



Appendix 2 Configure Your PC

Windows 7



MAC

Click on the **Apple** icon from the top-left corner and select **System Preferences**.



FAQs

Q1: Where should I place my wireless router for optimum performance?

- A1:** For optimum performance, place your device:
- Near the center of the area where your computers, smart phones and other devices operate, and preferably within line of sight to your wireless devices.
 - In an elevated location such as a high shelf, keeping the number of walls and ceilings to a minimum between the Router and other clients such as computers and smart phones.
 - Away from electrical devices that are potential sources of interference, such as ceiling fans, home security systems, or microwaves.
 - Away from any large metal surfaces, such as a solid metal door or aluminum studs.
 - Away from other materials such as glass, insulated walls, fish tanks, mirrors, brick, and concrete that can also affect your wireless signal.

Q2: I cannot log in to the wireless router's login page. What should I do?

- A2:** Please do as the following one by one until you solve your problem.
- Verify the Ethernet cable between your PC and the router is intact and well-connected. If not, change another Ethernet cable.
 - Clear cache of your browser, or change another browser.
 - Double check the TCP/IP settings on your PC. Verify that it is set to obtain an IP automatically. For details, see **Appendix 2 Configure Your PC** here.
 - Press and hold the **WPS/RST** button for about 8 seconds and then release it to reset the router to factory default settings. Then try logging in to it again.
 - Try accessing the Web Manager from another PC, smart phone or iPad.

Q3: I forget my WiFi password (security key), what should I do?

- A3:** Please do as the following one by one until you solve your problem.
- Log in to the wireless router's Web Manager, and you can see the WiFi password in the **Home** page.
 - Restore the wireless router to factory default settings, and reset the WiFi password. Restore Method: Press and hold the **WPS/RST** button for about 8 seconds and then release it.

Q4: I forget my login password, what should I do?

- A4:** Please do as the following one by one until you solve your problem.
- Try typing the default login password **admin**.
 - Restore the wireless router to factory default settings, log in to the router's Web Manager with the default login password **admin**, and then you can reset it by clicking **Tools > Change Password**. Restore Method: Press and hold the **WPS/RST** button for about 8 seconds and then release it.

Shenzhen Tenda Technology Co., Ltd.

6-8 Floor, Tower E3, No.1001, Zhongshanyuan Road,
Nanshan District, Shenzhen, China. 518055
Website: <http://www.tendacn.com>
E-mail: support@tenda.com.cn
YouTube: Tendasz1999
Skype: tendasz
Phone: Global hotline: (86 755)27657180

© 2015 Shenzhen Tenda Technology Co., Ltd. All rights reserved.
Tenda is a registered trademark legally held by Shenzhen Tenda Technology Co., Ltd.
Other brand and product names mentioned herein are trademarks or registered trademarks of their respective holders. Specifications are subject to change without notice.

CE

CE Mark Warning

This is a Class B product. In a domestic environment, this product may cause radio interference, in which case the user may be required to take adequate measures. This device complies with EU 1999/5/EC.

NOTE: (1) The manufacturer is not responsible for any radio or TV interference caused by unauthorized modifications to this equipment. (2) To avoid unnecessary radiation interference, it is recommended to use a shielded RJ45 cable.

FCC

FCC Statement

This device complies with Part 15 of the FCC Rules. Operation is subject to the following two conditions: (1) This device may not cause harmful interference, and (2) this device must accept any interference received, including interference that may cause undesired operation.

This equipment has been tested and found to comply with the limits for a Class B digital device, pursuant to Part 15 of the FCC Rules. These limits are designed to provide reasonable protection against harmful interference in a residential installation. This equipment generates, uses and can radiate radio frequency energy and, if not installed and used in accordance with the instructions, may cause harmful interference to radio communications. However, there is no guarantee that interference will not occur in a particular installation. If this equipment does cause harmful interference to radio or television reception, which can be determined by turning the equipment off and on, the user is encouraged to try to correct the interference by one of the following measures:

- Reorient or relocate the receiving antenna.
- Increase the separation between the equipment and receiver.
- Connect the equipment into an outlet on a circuit different from that to which the receiver is connected.
- Consult the dealer or an experienced radio/TV technician for help.

FCC Caution: Any changes or modifications not expressly approved by the party responsible for compliance could void the user's authority to operate this equipment. This transmitter must not be co-located or operating in conjunction with any other antenna or transmitter.

The manufacturer is not responsible for any radio or TV interference caused by unauthorized modifications to this equipment.

Radiation Exposure Statement

This equipment complies with FCC radiation exposure limits set forth for an uncontrolled environment. This equipment should be installed and operated with minimum distance 20cm between the radiator & your body.

NOTE: (1) The manufacturer is not responsible for any radio or TV interference caused by unauthorized modifications to this equipment. (2) To avoid unnecessary radiation interference, it is recommended to use a shielded RJ45 cable.