



Quick Installation Guide

Wireless Ceiling Access Point
i9/i21

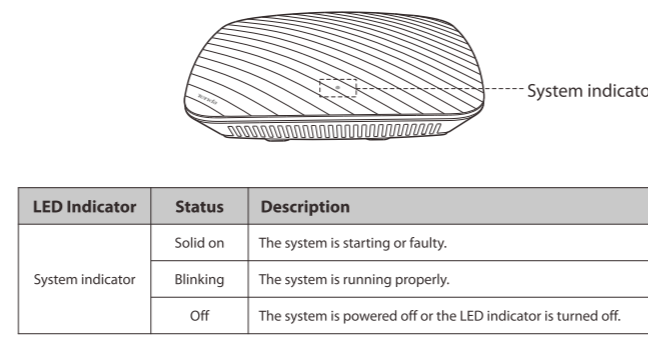
i21 is used for demonstration in this Quick Installation Guide unless otherwise stipulated.

Packing List

- Ceiling AP * 1
- Bracket * 1
- Power adapter X 1
- Quick Installation Guide * 1
- Mounting accessory (including 2 plastic anchors and 2 screws)

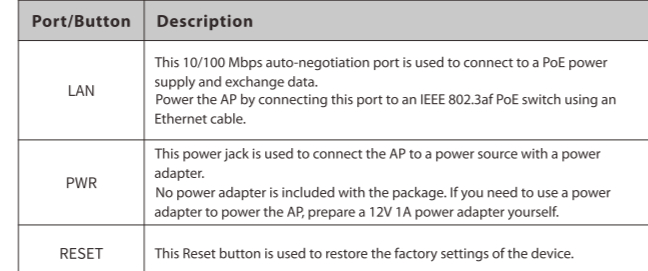
If any of the items is incorrect, missing, or damaged, please keep the original package and contact the local reseller or distributor immediately. This Quick Installation Guide is for installation instruction only. For more product or function details, please go to <http://www.tendacn.com>.

1. Get to Know Your AP



System indicator

LED Indicator	Status	Description
System indicator	Solid on	The system is starting or faulty.
	Blinking	The system is running properly.
	Off	The system is powered off or the LED indicator is turned off.



Reset button, Power jack, LAN port

Port/Button	Description
LAN	This 10/100 Mbps auto negotiation port is used to connect to a PoE power supply and exchange data. Please be careful when connecting this port to an IEEE 802.3af PoE switch using an Ethernet cable.
PWR	This power jack is used to connect the AP to a power source with a power adapter. No power adapter is included with the package. If you need to use a power adapter to power the AP, please use a 12V 1A power adapter yourself.
RESET	This Reset button is used to restore the factory settings of the device.

2. Installing the AP

Note: You may need a rubber hammer, a marker, a hammer drill, a drill bit, a screwdriver, and a ladder. Prepare them yourself.

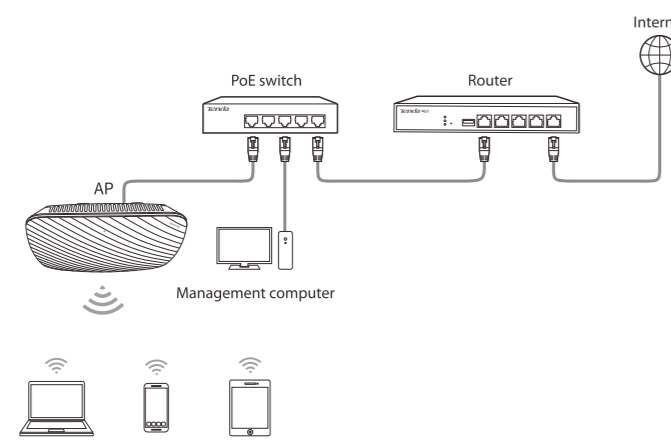
- Place the bracket onto the ceiling and mark the positions of the screw holes.
- Create holes at the marked positions using a hammer drill.
- Use the rubber hammer to knock the plastic anchors into the holes.
- Lead the screws through the screw holes of the bracket into the plastic anchors and use the screwdriver to fasten the bracket.
- Connect a CAT5 or better cable to the LAN port of the AP.
- Insert the hooks of the AP into the slots of the bracket, and slide the AP to one side until you hear a click.

3. Setting up Your WiFi Network

Scenario One: Setting up Your WiFi Network with a Router that Cannot Manage Tenda APs

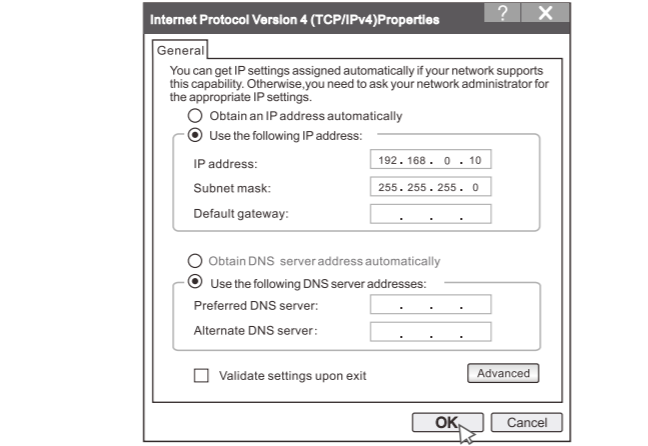
1. Connect Devices

Connect the LAN port of an AP to a PoE port of the PoE switch using an Ethernet cable, the uplink port of the PoE switch to a LAN port of the router, the WAN port of the router to the Internet, and connect the computer to the PoE switch using an Ethernet cable. See the following figure.



2. Set the IP address of Your Computer

Right-click the network icon in the lower-right corner of the desktop of the computer, and click **Open Network and Sharing Center, Local Area Connection**, and then **Properties**. Double-click **Internet Protocol Version 4 (TCP/IPv4)**, select **Use the following IP address**, set IP address to **192.168.0.X** (X: 2~200), which is **192.168.0.10** in this example) and **Subnet mask to 255.255.255.0**, and click **OK**.



3. Log in to the Web UI of the AP

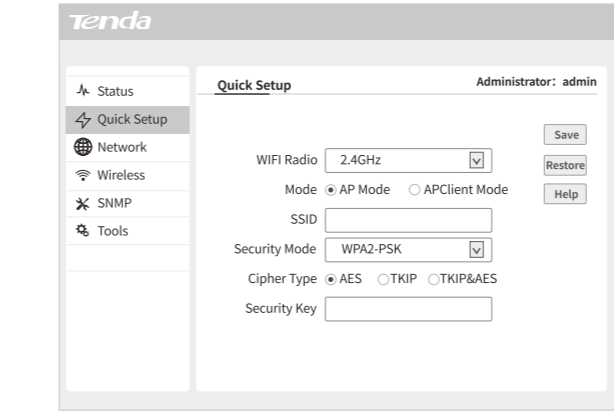
Start a web browser, enter the management IP address of the AP (default: **192.168.0.254**), and press **Enter**. Enter the user name and password (default: **admin/admin**), and click **Login**.



* If this page is not displayed, refer to **Q1** in **FAQ**.

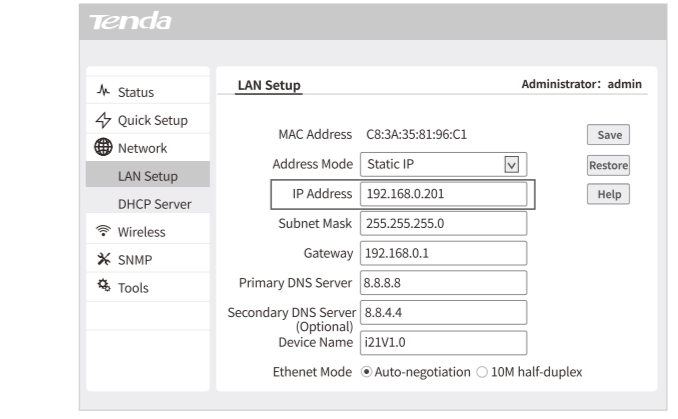
4. Set the WiFi Name and Password of the AP

Choose **Quick Setup** and set the **SSID** (WiFi name), password and other parameters of the AP. For example, you can select **2.4GHz** from the drop-down list of **WiFi Radio**, set **SSID** (WiFi name) to **Tenda_1**, **Security Mode** to **WPA2-PSK**, **Cipher Type** to **AES**, and **Password** to **12345678**, and click **Save**.



5. Change the LAN IP Address of the AP

Choose **Network > LAN Setup** and change the IP address to another IP address that has not been used in the network. For example, you can set the IP address of the first AP to **192.168.0.201** and the IP address of the second AP to **192.168.0.202**, and click **Save**.

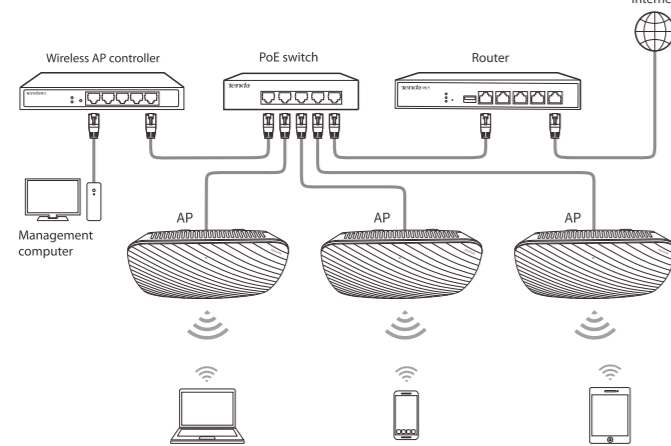


Wait a moment till the modification completes. Connect your WiFi devices to the AP's WiFi network (SSID) to access the Internet.
• Connect the LAN port of another AP to a LAN port of the PoE switch using an Ethernet cable, and perform steps 3-5 again.

Scenario Two: Setting up Your Network with a Tenda AP Controller

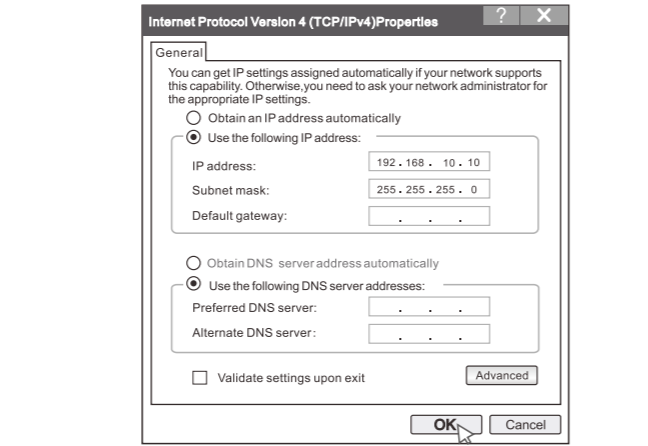
1. Connect Devices

Connect the LAN port of each AP to a PoE port of the PoE switch using an Ethernet cable, the uplink port of the PoE switch to a LAN port of the router, the WAN port of the router to the Internet, a LAN port of the wireless AP controller (Tenda M3) to the PoE switch, and the computer to the PoE switch. See the following figure.



2. Set the IP Address of Your Computer

Right-click the network icon in the lower-right corner of the desktop of the computer, and click **Open Network and Sharing Center, Local Area Connection**, and then **Properties**. Double-click **Internet Protocol Version 4 (TCP/IPv4)**, select **Use the following IP address**, set IP address to **192.168.10.X** (X: 2~253, which is **192.168.10.10** in this example) and **Subnet mask to 255.255.255.0**, and click **OK**.



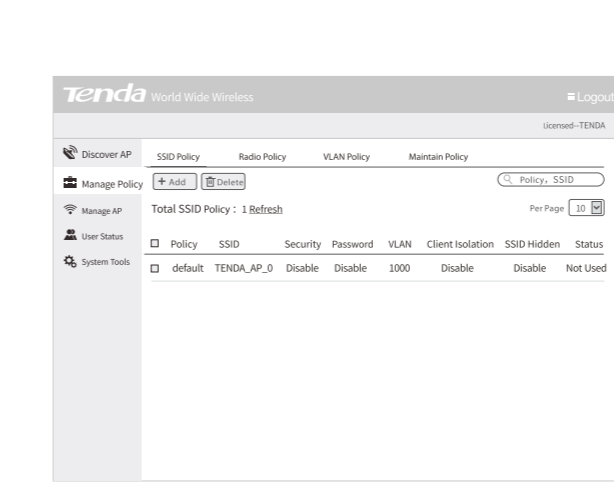
3. Log in to the Web UI of M3

Start a web browser, enter the management IP address of M3 (default: **192.168.10.1**), and press **Enter**. Enter the user name and password (default: **admin/admin**), and click **Login**.



4. Set WiFi Name and Password of the APs

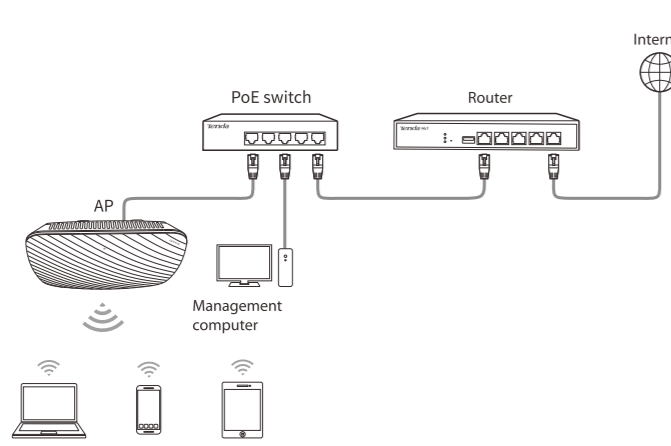
Choose **Manage Policy** and click **Zon** on the right of the **default policy**, and change the settings. For example, set **SSID** to **Tenda_1**, **Security** to **WPA2-PSK**, **Password** to **87654321**, and click **Save**.



Scenario Three: Setting up Your WiFi Network with a Router that can Manage Tenda APs

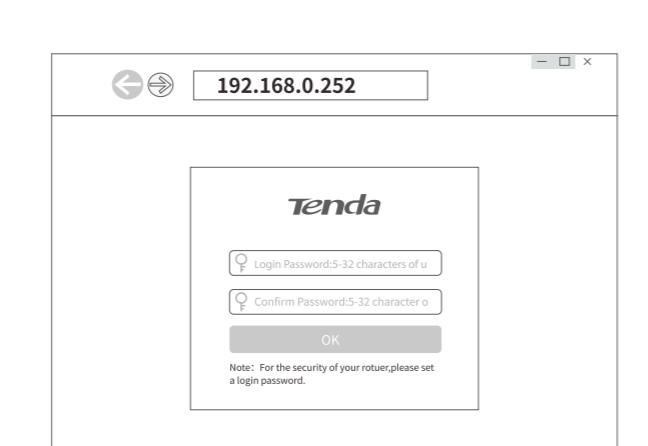
1. Connect Devices

Connect the LAN port of the AP to a PoE port of the PoE switch using an Ethernet cable, the uplink port of the PoE switch to a LAN port of the router (such as G3), the WAN port of the router to the Internet. See the following figure.



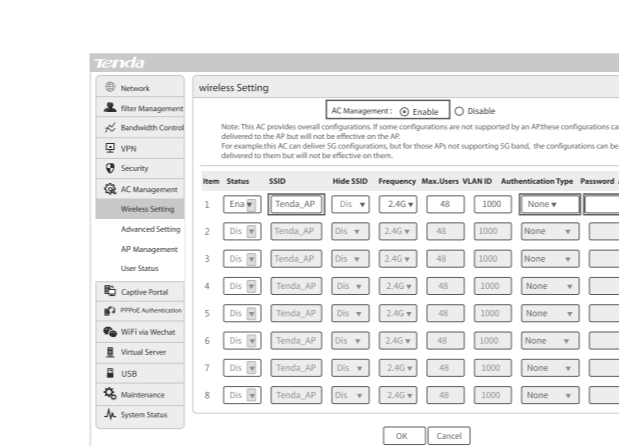
2. Log in to the Web UI of G3

Connect your computer to a LAN port of the router using an Ethernet cable. Start a web browser, enter the management IP address of G3 (default: **192.168.0.252**), and press **Enter**. Set your password on the page that appears, and click **OK** to access the home page of the web UI.



3. Set the WiFi Name and Password of the AP

Choose **AC Management > Wireless Settings** and set the WiFi name, password and other parameters of the AP. For example, you can set **SSID** (WiFi name) to **Tenda_1**, **Authentication Type** to **WPA2-PSK**, and **Password** to **87654321**, and click **OK**.



Wait a moment till the modification completes. Connect your WiFi devices to the AP's WiFi network (SSID) to access the Internet.

FAQ

Q1: I cannot access the web UI of the AP after entering 192.168.0.254. What should I do?

- A1.** Try the following solutions:
- Ensure that the Ethernet cables are properly connected.
 - Verify that the IP address of your computer is 192.168.0.X (X: 2~200).
 - Clear the cache of your web browser or replace the web browser, and try login again.
 - Disable the firewall of your computer or replace the computer, and try login again.
 - If two or more APs are connected to your network without an AP controller, connect each AP to the switch one by one and change the IP address to another IP address that has not been used in the network, and try again.
 - The AP may be managed by an AP controller and therefore its IP address is no longer 192.168.0.254. In that case, log in to the web UI of the AP controller to view the new IP address of the AP and log in to the AP using the new IP address.
 - If the problem persists, hold the RESET button down for 7 seconds to restore the AP to the factory settings, and try again.

Q2: My wireless AP controller cannot find the AP. What should I do?

- A2.** Check the following items:
- Verify that the devices are connected properly and the AP has started normally.
 - If VLANs have been defined on your network, verify that the corresponding VLAN has been added to your AP controller.
 - Restart the AP or restore the factory settings of the AP, and try scanning the AP again.

Operating temperature: -10°C~45°C
Operating humidity: 10%~93% RH, non-condensing



CE Mark Warning

This is a Class B product. In a domestic environment, this product may cause radio interference, in which case the user may be required to take adequate measures. This equipment should be installed and operated with minimum distance 20cm between the radiator & your body.

NOTE: (1) The manufacturer is not responsible for any radio or TV interference caused by unauthorized modifications to this equipment. (2) To avoid unnecessary radiation interference, it is recommended to use a shielded RJ45 cable.

Declaration of Conformity
Hereby, SHENZHEN TENDA TECHNOLOGY CO. LTD. declares that the radio equipment type i9/i21 is in compliance with Directive 2014/53/EU.
The full text of the EU declaration of conformity is available at the following internet address: <http://www.tendacn.com/service/download-cata-101.html>.

Operate Frequency:
2.462-2.472GHz-2.473GHz
ERP Power (Max.):
2.4GHz: 200mW
Software Version: V1.0.0.3



CE Mark Warning

This is a Class B product. In a domestic environment, this product may cause radio interference, in which case the user may be required to take adequate measures. Operation in the 5.15-5.25GHz band are restricted to indoor use only. This equipment should be installed and operated with minimum distance 20cm between the radiator & your body.

NOTE: (1) The manufacturer is not responsible for any radio or TV interference caused by unauthorized modifications to this equipment. (2) To avoid unnecessary radiation interference, it is recommended to use a shielded RJ45 cable.

Declaration of Conformity
Hereby, SHENZHEN TENDA TECHNOLOGY CO. LTD. declares that the radio equipment type i31 is in compliance with Directive 2014/53/EU.
The full text of the EU declaration of conformity is available at the following internet address: <http://www.tendacn.com/service/download-cata-101.html>.

Operate Frequency:
2.462-2.472GHz-2.473GHz
SG: S-15-5.25GHz, S-725-5.825GHz
ERP Power (Max.):
2.4GHz: 330dbm
5GHz: 18dbm
Software Version: V1.0.0.4



FCC Statement

This equipment has been tested and found to comply with the limits for a Class B digital device, pursuant to Part 15 of the FCC Rules. These limits are designed to provide reasonable protection against harmful interference in a residential installation. This equipment generates, uses and can radiate radio frequency energy and, if not installed and used in accordance with the instructions, may cause harmful interference to radio communications. However, there is no guarantee that interference will not occur in a particular installation. If this equipment does cause harmful interference to radio or television reception, which can be determined by turning the equipment off and on, the user is encouraged to try to correct the interference by one or more of the following measures:

- Reorient or relocate the receiving antenna.
- Increase the separation between the equipment and receiver.
- Connect the equipment into an outlet on a circuit different from that to which the receiver is connected.
- Consult the dealer or an experienced radio/TV technician for help.

This device is restricted to be used in the indoor.

Operation is subject to the following two conditions: (1) This device may not cause harmful interference, and (2) this device must accept any interference received, including interference that may cause undesired operation.

Radiation Exposure Statement
This device complies with FCC radiation exposure limits set forth for an uncontrolled

environment and it also complies with Part 15 of the FCC RF Rules. This equipment should be installed and operated with minimum distance 20cm between the radiator & your body.

Caution: Any changes or modifications not expressly approved by the party responsible for compliance could void the user's authority to operate this equipment. This transmitter must not be co-located or operating in conjunction with any other antenna or transmitter.

NOTE: (1) The manufacturer is not responsible for any radio or TV interference caused by unauthorized modifications to this equipment. (2) To avoid unnecessary radiation interference, it is recommended to use a shielded RJ45 cable.



This product bears the selective sorting symbol for Waste electrical and electronic equipment (WEEE). This means that this product must be handled pursuant to European Directive 2012/19/EU in order to be recycled or dismantled to minimize its impact on the environment. User has the choice to give his product to a competent recycling organization or to the retailer when he buys a new electrical or electronic equipment.

Technical Support

Shenzhen Tenda Technology Co., Ltd.
6/F Floor, Tower E3, NO.1001, Zhongshanyuan Road, Nanshan District, Shenzhen, China. 518052
Global Sales Hotline: 1-800-570-9992
Canada Hotline: 1-888-998-8966
Hongkong Hotline: 00852-8191998
Skype: Tendacn
Website: <http://www.tendacn.com>
Email: support@tendacn.com

Copyright

© 2015 Shenzhen Tenda Technology Co., Ltd. All rights reserved.
Tenda is a registered trademark legally held by Shenzhen Tenda Technology Co., Ltd. Other brand and product names mentioned herein are trademarks or registered trademarks of their respective holders. Specifications are subject to change without notice.

BE	BG	CZ	DK	DE	EE	IE	EL	ES	FR
HR	IT	CY	LV	LT	SU	HU	MT	NL	AT
PL	PT	RO	SI	SK	FI	SE	UK		