



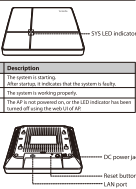
Quick Installation Guide Ceiling AP Series

Package contents

- Wireless ceiling AP x 1
- Bracket x 1
- Accessories (Screws, plastic nuts, and plastic anchors)
- Quick Installation Guide x 1

Please refer to the following information for the signal strength and power output of the AP model in this document. This Quick Installation Guide is for installation instruction only. For more product information, please refer to the user manual.

1. Getting to know your AP



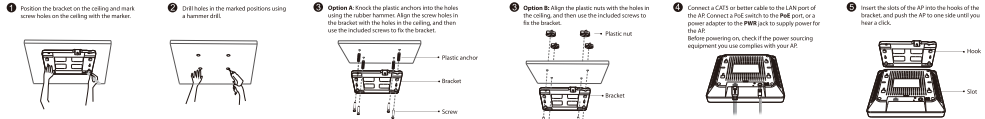
LED Indicator	Applies	Description
SYS LED	On	The network is starting. The wireless indicator lights when the system is ready.
SYS LED	Blinking	The system is working properly.
SYS LED	Off	The AP is not powered on or the LED indicator has been turned off.

Port/Function	Description
LAN	Use the LAN port to connect your computer to the AP. Do not connect any other devices to this port.
RESET	Press the RESET button to restore the factory default settings.
PWR	DC power jack. Insert a power adapter to supply power to the AP.

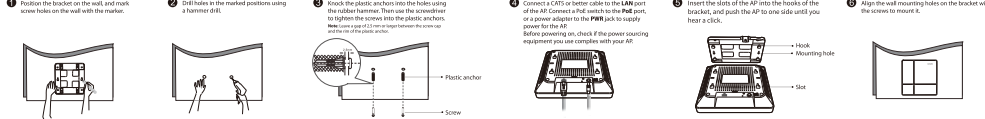
Caution: The power specification may vary. Before powering on, check if the power sourcing equipment you use complies with your AP.

2. Installing your AP

Ceiling installation



Wall mounting



3. Connecting and Configuring your APs

Scenario 1: Deploying your network without a management device for Tenda AP

1. Connect devices
Connect your AP to a PoE port of the PoE switch using an Ethernet cable. Refer to the following figure for detailed connection. After finishing, check your connection, ensure that the SYS LED indicator blinks and the power light icon on your computer is well displayed.

2. Configure the IP address of your computer (Example: Win10)
Right-click the network icon on the lower right corner of your computer. Click **Network and Sharing Center** > **Change adapter settings**. Right-click the Ethernet. Then click **Properties**. Double-click **Internet Protocol Version 4 (TCP/IPv4)**. Select **Use the following IP address** and fill in the IP address to 192.168.0.254 and Subnet mask to 255.255.255.0 and click OK.

3. Log in to the web UI of the AP
Start a web browser on your computer, and access 192.168.0.254. Follow the on-screen instructions to log in. Then click **Quick Setup**. Then click **LAN Setup**. Then click **LAN Setup**. Then click **LAN Setup**. Then click **LAN Setup**. Then click **LAN Setup**.

4. Modifying the IP address of the AP
Choose **Internet Settings** > **LAN Setup**. Modify the IP address of the AP to 192.168.0.1. Click OK. Then click **LAN Setup**. Then click **LAN Setup**. Then click **LAN Setup**. Then click **LAN Setup**.

Scenario 2: Deploying your network with a Tenda access controller (AC)

1. Connect devices
Use Ethernet cables to connect APs to PoE ports of the switch. Refer to the following figure for detailed connection.

2. Configure APs
Start a web browser on your computer and log in to the web UI of the AC. Refer to your AC's user guide for detailed instructions.

Scenario 3: Deploying your network with a Tenda router that includes the AC functionality

1. Connect devices
Use Ethernet cables to connect APs to the PoE ports of the switch. Refer to the following figure for detailed connection.

2. Configure APs
Start a web browser on your computer and log in to the web UI of your Tenda router. Refer to the router's user guide for detailed instructions.

FAQ

Q1. I cannot access the web UI of the AP after entering 192.168.0.254.
A1. Try the following solutions:
• Check if your Ethernet cables are connected properly. If yes, the corresponding LED indicator lights up.
• Ensure that the IP address of your computer has been set to 192.168.0.254 and the subnet mask is set to 255.255.255.0.
• Clear the cache of your web browser or replace the web browser.
• Disable the firewall of your computer, or disable the computer.
• If you or more APs are connected in the network without an AC, you should know that you can only use one AP in the network first and configure the AP's IP address. Then repeat this procedure to change the IP address of the other APs. Meanwhile, ensure that the AP's new IP address are in the same network segment with the IP address of your computer. Then log in to the AP's web UI using their new IP addresses.
• The AP may be being managed by an AC, and meanwhile its IP address is no longer 192.168.0.254. In this case, go to the web UI of the AC to view the new IP address of the AP, and then log in to the AP's web UI using the new IP address.
• If the problem persists, reset the AP.

Q2. My wireless AC cannot find the AP. What should I do?
A2. Try the following solutions:
• Check if you use the Tenda AC. The AP can only be managed by Tenda AC.
• Ensure that all the devices in the network are connected properly and the AP has completed startup.
• If APs have been identified by your network, verify that the corresponding VLAN has been added to your AC.
• Restart the AP.
• Ensure that the firmware versions of your AP and AC are the same with the latest firmware versions available on <http://www.tenda.com>.

Q3. How to upgrade my AP?
A3. Perform as follows:
1. Choose your firmware version and download it from our official website: <http://www.tenda.com>.
2. Upload the file to your computer.
3. Log in to the web UI of the AP. Choose **Tools > Maintenance**, and navigate to the **Firmware Upgrade** screen. Click **Upgrade**.
4. After successful upgrade, reset your AP to apply your settings.

Q4. How to reset my AP?
A4.
Option 1: Reset using the RESET button
When the SYS LED indicator of the AP blinks, hold down the RESET button for about 8 seconds. The AP is reset successfully when the SYS LED indicator lights solid on.

Option 2: Restoring using the Web UI
Log in to the web UI of the AP. Choose **Tools > Maintenance**, and navigate to the **Reset** screen. Then follow the on-screen instructions to reset it.

Note: Restoring clears all configurations of your AP.

CE Mark Warning
This is a Class B product. In a domestic environment, this product may cause radio interference, in which case the user may be required to take adequate measures. This equipment should be installed and operated with minimum distance 20cm between the device and your body.
The main plug is your disconnected device. The disconnected device shall remain ready to plug.
NOTE: (1) The manufacturer is not responsible for any radio or TV interference caused by unauthorized modifications to this equipment. (2) To avoid unnecessary radiation interference, it is recommended to use a shielded LAN cable.

FCC Statement
This equipment has been tested and found to comply with the limits for a Class B digital device, pursuant to Part 15 of the FCC Rules. These limits are designed to provide reasonable protection against harmful interference in a residential installation. This equipment generates, uses, and can radiate radio frequency energy and, if not installed and used in accordance with the instructions, may cause harmful interference to radio communications. However, there is no guarantee that interference will not occur in a particular installation. If this equipment does cause harmful interference to radio or television reception, which can be determined by turning the equipment off and on, the user is encouraged to correct the interference by one or more of the following measures:
— Reorient or relocate the receiving antenna.
— Increase the separation between the equipment and receiver.
— Connect the equipment to an outlet on a circuit different from that to which the receiver is connected.
— Consult the dealer or an experienced radio/TV technician for help.

The device is for indoor usage only.
This product is subject to the following two conditions: (1) This device may not cause harmful interference, and (2) this device must accept any interference received, including interference that may cause undesired operation.

Declaration of Conformity
Herby, SHENZHEN TENDA TECHNOLOGY CO., LTD. declares that the radio equipment type 254 is in compliance with Directive 2014/53/EU.
The full text of the EUI Declaration of Conformity is available at the following internet address: http://www.tenda.com/service/download_date107.html

Operating Frequency: 2.4GHz, 5GHz, 5.8GHz
Power: 100mW, 200mW, 400mW
EIRP Power (Max.): 1W
LAN: RJ45, RJ45
Software Version: V1.0.0.2

RECYCLING
This product bears the selective sorting symbol for waste electrical and electronic equipment (WEEE). This means that this product must be handled pursuant to European Directive 2012/19/EU in order to be recycled or dismantled to minimize its impact on the environment.
User has the choice to give his product to a competent receiving organization or to the retailer where he buys a new electrical or electronic equipment.

Operating temperature: 0°C ~ 40°C
Operating humidity: 10% ~ 90% RH, non-condensing
Storage temperature: -30°C ~ 70°C
Storage humidity: 5% ~ 95% RH, non-condensing

For EUREPA, this product can be used in the following countries:

BE	BG	CZ	DE	DK	EE	EL	ES	FI	FR
IT	JP	KO	LI	LU	NL	NL	PT	SE	SI
SK	UK	US	US	US	US	US	US	US	US

Using two screws, the AP is PAL25mm for mounting.

Technical Support
Shenzhen Tenda Technology Co., Ltd.
6A Floor, Tower 3, NO. 1001, Zhenyuanyuan North Harbour District, Shenzhen, China 518022
USA: 1-800-585-8880
Tel: 86-755-2319-0001
Fax: 86-755-2319-0002
E-mail: sales@tenda.com
Website: <http://www.tenda.com>
E-mail: sales@tenda.com

Copyright
© 2017 Shenzhen Tenda Technology Co., Ltd. All rights reserved.
Tenda is a registered trademark of Tenda Technology Co., Ltd. Other brand and product names mentioned here are trademarks or registered trademarks of their respective holders. Specifications are subject to change without notice.