

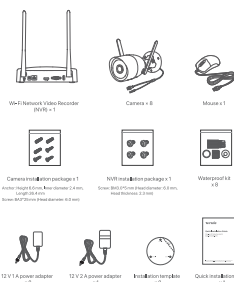


## Quick Installation Guide

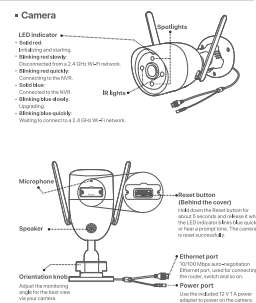
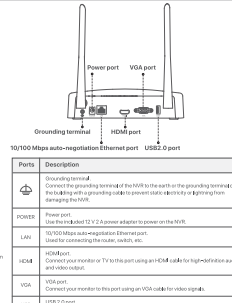
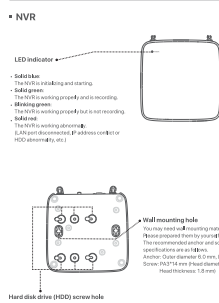
### Wireless HD Video Security Kit KAW-3TC/K8W-3TC

## Package contents

The KAW-3TC is taken as an example here. The actual product prevails.

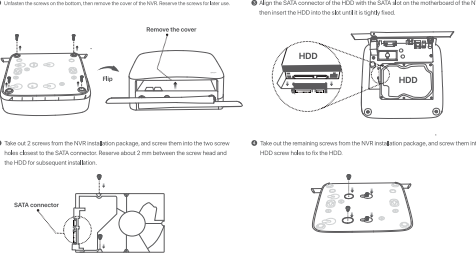


## Appearance



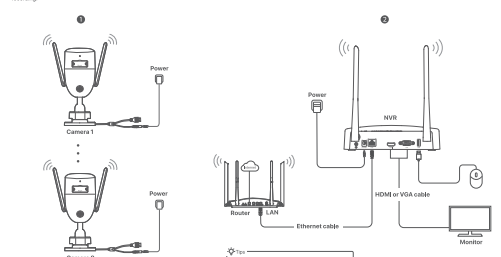
## 1 Install the HDD

- 1. Turn the NVR upside down and remove the cover of the NVR. Be aware of the screws for later use.
- 2. Align the SATA connector of the HDD with the SATA slot on the motherboard of the NVR, and then insert the HDD into the slot until it is tightly fixed.
- 3. Mounting the cover with the previously removed screws.



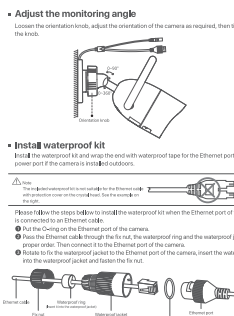
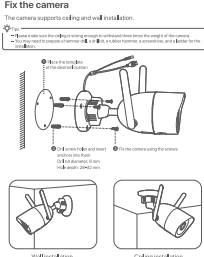
## 2 Connect the device

- 1. Connect the power cable to the power port of the NVR, and plug the power adapter into the power socket to start the NVR.
- 2. Connect the TV to the power adapter, and connect the power adapter to the power socket to start the NVR.
- 3. Connect the mouse to the mouse port of the NVR, and plug the mouse into the mouse port.
- 4. Connect the monitor to the monitor port of the NVR, and plug the monitor into the monitor port.
- 5. Connect the camera to the camera port of the NVR, and plug the camera into the camera port.
- 6. Connect the Ethernet cable to the Ethernet port of the NVR, and plug the Ethernet cable into the Ethernet port.
- 7. Connect the USB drive to the USB port of the NVR, and plug the USB drive into the USB port.

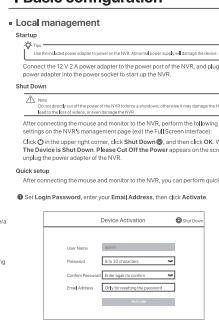


## 3 Install the camera

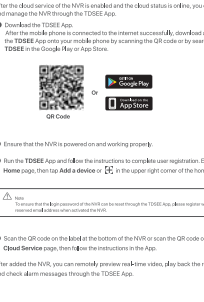
- 1. Install the camera to the monitoring location as required.
- 2. The camera needs to be fixed to the selected coverage of the NVR.
- 3. The distance between the NVR camera and the video monitor, induction coil, microphone, and speaker should be more than 1 meter.
- 4. The antenna of the NVR and the camera are fixed vertically.



## 4 Basic configuration

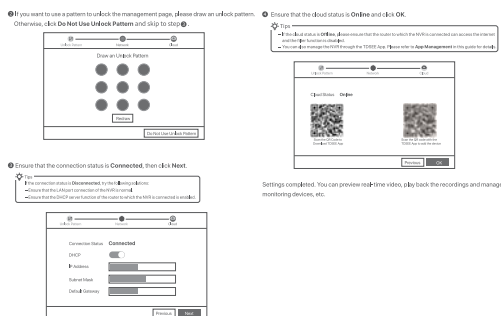


## App management



- Q1: What should I do if the NVR fails to automatically add the camera?**
  - A1: 1. Check the LED indicator of the NVR. If the LED indicator is off, check the power supply.
  - 2. Check the distance between the NVR camera and the video monitor, induction coil, microphone, and speaker is more than 1 meter.
  - 3. Check the distance between the NVR camera and the video monitor, induction coil, microphone, and speaker is more than 1 meter.
- Q2: What should I do when the video preview is not smooth or the camera is shaken?**
  - A2: 1. Check the distance between the NVR camera and the video monitor, induction coil, microphone, and speaker is more than 1 meter.
  - 2. Check the distance between the NVR camera and the video monitor, induction coil, microphone, and speaker is more than 1 meter.
- Q3: How to add a new camera when the NVR is under stable operation?**
  - A3: 1. Press the LED indicator of the NVR. If the LED indicator is off, check the power supply.
  - 2. Press the LED indicator of the NVR. If the LED indicator is off, check the power supply.
- Q4: What should I do if there is no video for playing back on the NVR?**
  - A4: 1. Check the HDD connection.
  - 2. Check the HDD connection.

- CE**
  - CE Mark Warning (EN55024 & EN55022)
  - Declaration of Conformity (EN55024 & EN55022)
- FCC**
  - FCC Statement (FCC Part 15)
  - Declaration of Conformity (FCC Part 15)
- RoHS**
  - RoHS Statement (RoHS)
  - Declaration of Conformity (RoHS)



- CE**
  - CE Mark Warning (EN55024 & EN55022)
  - Declaration of Conformity (EN55024 & EN55022)
- FCC**
  - FCC Statement (FCC Part 15)
  - Declaration of Conformity (FCC Part 15)
- RoHS**
  - RoHS Statement (RoHS)
  - Declaration of Conformity (RoHS)

**Legal and Compliance:** This product is designed and manufactured in accordance with the CE, FCC, and RoHS standards. It is not intended for use in the United States, Canada, Mexico, or any other country where the use of such equipment is prohibited by law. The user assumes all responsibility for any damage or loss resulting from the use of this product. The manufacturer is not responsible for any damage or loss resulting from the use of this product. The manufacturer is not responsible for any damage or loss resulting from the use of this product. The manufacturer is not responsible for any damage or loss resulting from the use of this product.

**Technical Support:** For technical support, please contact our customer service team. We will provide you with the necessary information and assistance. Our customer service team is available 24/7. You can contact us via email, phone, or chat. Our website also provides a comprehensive FAQ and troubleshooting guide. We will do our best to resolve your issue as quickly as possible. Your satisfaction is our top priority.

**Copyright:** © 2023 Tenda Technology Co., Ltd. All rights reserved. This document is the property of Tenda Technology Co., Ltd. and is confidential. It is not to be distributed, copied, or reproduced in any form without the prior written permission of Tenda Technology Co., Ltd. The content of this document is subject to change without notice. The user assumes all responsibility for any damage or loss resulting from the use of this product. The manufacturer is not responsible for any damage or loss resulting from the use of this product. The manufacturer is not responsible for any damage or loss resulting from the use of this product.