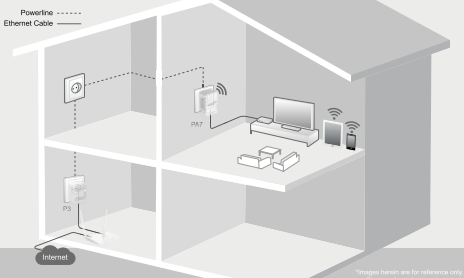
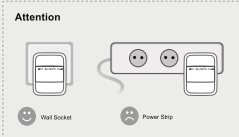




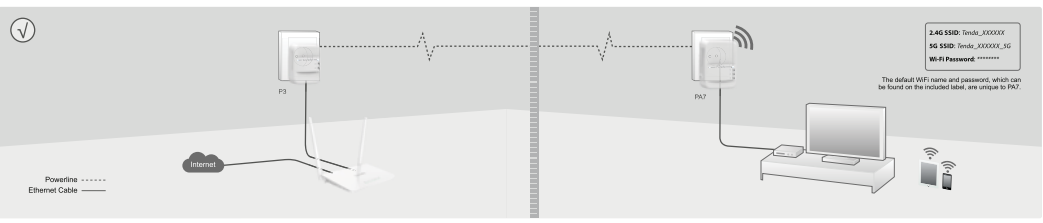
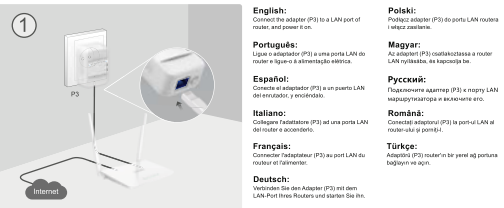
Quick Installation Guide

AV1000 AC Wi-Fi Powerline Extender Kit
Model: PA70

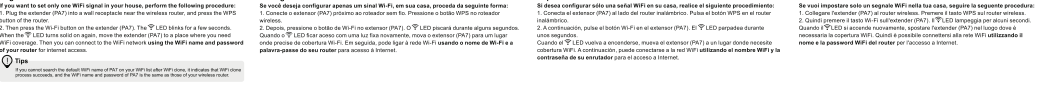
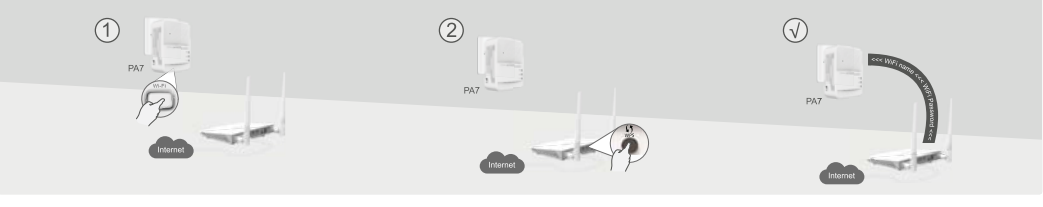


*Afterwards please refer to instructions only. Please refer to the actual product.

Plug and Play



Wi-Fi Clone (optional) *If your router has no WPS button, this function is not available.



English: Please connect the default Wi-Fi network of P3 to the LAN port of the PA7 extender, so that the Wi-Fi network of P3 can be cloned.

Português: Ligue o LED de rede da P3 ao cabo LAN da PA7, para que a rede Wi-Fi da P3 seja clonada.

Español: Si desea configurar solo un router Wi-Fi, en su caso, realice el siguiente procedimiento: 1. Conecte el puerto de red de la P3 al puerto LAN de la PA7. 2. Encienda el interruptor de la PA7 y espere unos segundos. El LED de red de la PA7 parpadeará durante unos segundos. Cuando el LED de red de la P3 parpadee, presione el botón de configuración de la PA7 para clonar la configuración de la P3.

Italiano: Se vuoi impostare solo un router Wi-Fi, nel tuo caso, seguire il seguente procedimento: 1. Collegare l'estremità di rete della P3 all'uscita LAN della PA7. 2. Accendere l'interruttore della PA7 e attendere alcuni secondi. Quando il LED di rete della PA7 lampeggerà, premere il pulsante di configurazione della PA7 per copiarne le impostazioni.

Magyar: Ha csak egy Wi-Fi hálózatot szeretne beállítani, akkor a következő lépéseket kell megtennie: 1. Csatlakoztassa az internet kábel végét a P3 kábel LAN csatlakoztatásához. 2. Bekapcsolja a PA7-t és várjon néhány másodpercet. Amikor a PA7 hálózati lámpája megvilágul, kattintson az előlapján található konfigurációs gombra, hogy a P3 beállításaival másolja fel a beállításokat.

Türkçe: Eğer sadece bir Wi-Fi ağı kurmak istiyorsanız, aşağıdaki adımları izleyin: 1. P3'ün ağ kablosunu PA7'nin LAN kablosuna bağlayın. 2. PA7'yi açın ve birkaç saniye bekleyin. PA7'nin ağ ışığı parlarken, PA7'nin ön panelindeki yapılandırma düğmesine dokunarak P3'ün ayarlarını kopyalayın.

Rusconi: Если вы хотите настроить только один маршрутизатор Wi-Fi, в вашем случае, следуйте следующему порядку действий: 1. Подключите кабель сети устройства P3 к порту LAN устройства PA7. 2. Включите устройство PA7 и подождите несколько секунд. Когда загорится светодиодная лампа PA7, нажмите кнопку конфигурации на устройстве PA7, чтобы скопировать конфигурацию устройства P3.

Fransızca: En çok basit şekilde de bir ağ için PA7'yi kullanın. Bu işlem için aşağıdaki adımları izleyin:
1. P3'ün ağ kablosunu PA7'nin LAN kablosuna bağlayın.
2. PA7'yi açın ve birkaç saniye bekleyin. PA7'nin ağ ışığı parlarken, PA7'nin ön panelindeki yapılandırma düğmesine dokunarak P3'ün ayarlarını kopyalayın.

Magyar: Ha csak egy Wi-Fi hálózatot szeretne beállítani, akkor a következő lépéseket kell megtennie:
1. Csatlakoztassa az internet kábel végét a P3 kábel LAN csatlakoztatásához.
2. Bekapcsolja a PA7-t és várjon néhány másodpercet. Amikor a PA7 hálózati lámpája megvilágul, kattintson az előlapján található konfigurációs gombra, hogy a P3 beállításait másolja fel a beállításokat.

Română: Dacă doriți să configurați numai un router Wi-Fi în casa dvs., urmați următorii pași:
1. Conectați cablul de rețea al dispozitivului P3 la cablul LAN al dispozitivului PA7.
2. Porniți dispozitivul PA7 și așteptați câteva secunde. Când se aprinde LED-ul de rețea al dispozitivului PA7, apăsați butonul de configurare de pe fațada dispozitivului PA7 pentru a copia setările dispozitivului P3.

Polski: Aby skonfigurować tylko jeden router Wi-Fi w domu, należy postępować według następujących kroków:
1. Podłączyć kabel sieciowy urządzenia P3 do gniazda LAN urządzenia PA7.
2. Włączyć urządzenie PA7 i poczekać kilka sekund. Kiedy zaświeci się dioda LED urządzenia PA7, nacisnąć przycisk konfiguracji na obrotowej powierzchni urządzenia PA7, aby skopiować konfigurację urządzenia P3.

Fransızca: En çok basit şekilde de bir ağ için PA7'yi kullanın. Bu işlem için aşağıdaki adımları izleyin:
1. P3'ün ağ kablosunu PA7'nin LAN kablosuna bağlayın.
2. PA7'yi açın ve birkaç saniye bekleyin. PA7'nin ağ ışığı parlarken, PA7'nin ön panelindeki yapılandırma düğmesine dokunarak P3'ün ayarlarını kopyalayın.

Magyar: Ha csak egy Wi-Fi hálózatot szeretne beállítani, akkor a következő lépéseket kell megtennie:
1. Csatlakoztassa az internet kábel végét a P3 kábel LAN csatlakoztatásához.
2. Bekapcsolja a PA7-t és várjon néhány másodpercet. Amikor a PA7 hálózati lámpája megvilágul, kattintson az előlapján található konfigurációs gombra, hogy a P3 beállításait másolja fel a beállításokat.

Română: Dacă doriți să configurați numai un router Wi-Fi în casa dvs., urmați următorii pași:
1. Conectați cablul de rețea al dispozitivului P3 la cablul LAN al dispozitivului PA7.
2. Porniți dispozitivul PA7 și așteptați câteva secunde. Când se aprinde LED-ul de rețea al dispozitivului PA7, apăsați butonul de configurare de pe fațada dispozitivului PA7 pentru a copia setările dispozitivului P3.

Polski: Aby skonfigurować tylko jeden router Wi-Fi w domu, należy postępować według następujących kroków:
1. Podłączyć kabel sieciowy urządzenia P3 do gniazda LAN urządzenia PA7.
2. Włączyć urządzenie PA7 i poczekać kilka sekund. Kiedy zaświeci się dioda LED urządzenia PA7, nacisnąć przycisk konfiguracji na obrotowej powierzchni urządzenia PA7, aby skopiować konfigurację urządzenia P3.

Türkçe: En çok basit şekilde de bir ağ için PA7'yi kullanın. Bu işlem için aşağıdaki adımları izleyin:
1. P3'ün ağ kablosunu PA7'nin LAN kablosuna bağlayın.
2. PA7'yi açın ve birkaç saniye bekleyin. PA7'nin ağ ışığı parlarken, PA7'nin ön panelindeki yapılandırma düğmesine dokunarak P3'ün ayarlarını kopyalayın.

Magyar: Ha csak egy Wi-Fi hálózatot szeretne beállítani, akkor a következő lépéseket kell megtennie:
1. Csatlakoztassa az internet kábel végét a P3 kábel LAN csatlakoztatásához.
2. Bekapcsolja a PA7-t és várjon néhány másodpercet. Amikor a PA7 hálózati lámpája megvilágul, kattintson az előlapján található konfigurációs gombra, hogy a P3 beállításait másolja fel a beállításokat.

Română: Dacă doriți să configurați numai un router Wi-Fi în casa dvs., urmați următorii pași:
1. Conectați cablul de rețea al dispozitivului P3 la cablul LAN al dispozitivului PA7.
2. Porniți dispozitivul PA7 și așteptați câteva secunde. Când se aprinde LED-ul de rețea al dispozitivului PA7, apăsați butonul de configurare de pe fațada dispozitivului PA7 pentru a copia setările dispozitivului P3.

Polski: Aby skonfigurować tylko jeden router Wi-Fi w domu, należy postępować według następujących kroków:
1. Podłączyć kabel sieciowy urządzenia P3 do gniazda LAN urządzenia PA7.
2. Włączyć urządzenie PA7 i poczekać kilka sekund. Kiedy zaświeci się dioda LED urządzenia PA7, nacisnąć przycisk konfiguracji na obrotowej powierzchni urządzenia PA7, aby skopiować konfigurację urządzenia P3.

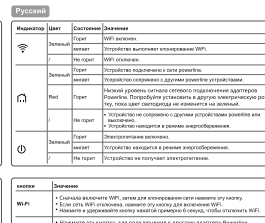
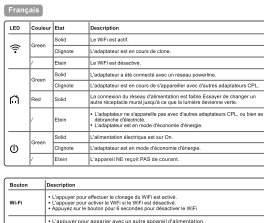
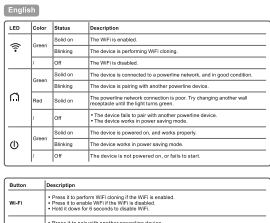
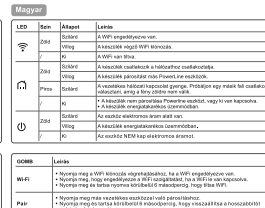
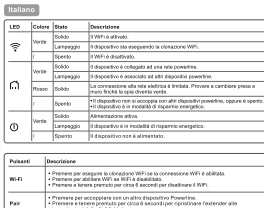
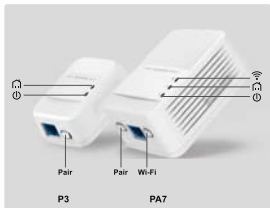
FAQ

Q1: The LED is not off when both P3 and PA7 are powered on. What should I do?
A1: Try the following methods:
1. Press the Power button on the PA7 extender for 5 seconds.
2. Press the Pair button on the P3 extender for 5 seconds.
3. Press the Wi-Fi button on the P3 extender for 5 seconds.
4. Press the Wi-Fi button on the PA7 extender for 5 seconds.
5. Press the Power button on the PA7 extender for 5 seconds.
6. Press the Power button on the P3 extender for 5 seconds.
7. Press the Power button on the PA7 extender for 5 seconds.
8. Press the Power button on the P3 extender for 5 seconds.

Q2: My wireless router does not support WPS, or Wi-Fi does not work. What should I do?
A2: Try the following methods:
1. Press the Wi-Fi button on the PA7 extender for 5 seconds.
2. Press the Pair button on the P3 extender for 5 seconds.
3. Press the Wi-Fi button on the P3 extender for 5 seconds.
4. Press the Wi-Fi button on the PA7 extender for 5 seconds.
5. Press the Power button on the PA7 extender for 5 seconds.
6. Press the Power button on the P3 extender for 5 seconds.
7. Press the Power button on the PA7 extender for 5 seconds.
8. Press the Power button on the P3 extender for 5 seconds.

Q3: What should I do if I don't see the PA7 LED?
A3: What should I do if I don't see the PA7 LED?
1. Press the Power button on the PA7 extender for 5 seconds.
2. Press the Power button on the P3 extender for 5 seconds.

LED & Button



LED	Color	Status	Description
Power	Green	On	Power is on.
Power	Green	Flashing	Power is on and charging.
Power	Red	On	Power is on and charging, but the device is not connected to the network.
Power	Red	Flashing	Power is on and charging, but the device is not connected to the network.
Power	Red	Off	The device is not powered on or the power is off.
Power	Red	Off	The device is not powered on or the power is off.

LED	Color	Status	Description
Power	Green	On	Power is on.
Power	Green	Flashing	Power is on and charging.
Power	Red	On	Power is on and charging, but the device is not connected to the network.
Power	Red	Flashing	Power is on and charging, but the device is not connected to the network.
Power	Red	Off	The device is not powered on or the power is off.
Power	Red	Off	The device is not powered on or the power is off.

LED	Color	Status	Description
Power	Green	On	Power is on.
Power	Green	Flashing	Power is on and charging.
Power	Red	On	Power is on and charging, but the device is not connected to the network.
Power	Red	Flashing	Power is on and charging, but the device is not connected to the network.
Power	Red	Off	The device is not powered on or the power is off.
Power	Red	Off	The device is not powered on or the power is off.

Button	Description
Power	Press to turn on or off the device.
Wi-Fi	Press to connect to the Wi-Fi network.
Pair	Press to pair the device with another device.

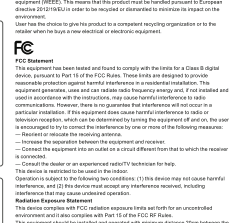
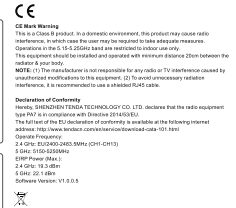
Button	Description
Power	Press to turn on or off the device.
Wi-Fi	Press to connect to the Wi-Fi network.
Pair	Press to pair the device with another device.

Button	Description
Power	Press to turn on or off the device.
Wi-Fi	Press to connect to the Wi-Fi network.
Pair	Press to pair the device with another device.

LED	Color	Status	Description
Power	Green	On	Power is on.
Power	Green	Flashing	Power is on and charging.
Power	Red	On	Power is on and charging, but the device is not connected to the network.
Power	Red	Flashing	Power is on and charging, but the device is not connected to the network.
Power	Red	Off	The device is not powered on or the power is off.
Power	Red	Off	The device is not powered on or the power is off.

LED	Color	Status	Description
Power	Green	On	Power is on.
Power	Green	Flashing	Power is on and charging.
Power	Red	On	Power is on and charging, but the device is not connected to the network.
Power	Red	Flashing	Power is on and charging, but the device is not connected to the network.
Power	Red	Off	The device is not powered on or the power is off.
Power	Red	Off	The device is not powered on or the power is off.

LED	Color	Status	Description
Power	Green	On	Power is on.
Power	Green	Flashing	Power is on and charging.
Power	Red	On	Power is on and charging, but the device is not connected to the network.
Power	Red	Flashing	Power is on and charging, but the device is not connected to the network.
Power	Red	Off	The device is not powered on or the power is off.
Power	Red	Off	The device is not powered on or the power is off.



LED	Color	Status	Description
Power	Green	On	Power is on.
Power	Green	Flashing	Power is on and charging.
Power	Red	On	Power is on and charging, but the device is not connected to the network.
Power	Red	Flashing	Power is on and charging, but the device is not connected to the network.
Power	Red	Off	The device is not powered on or the power is off.
Power	Red	Off	The device is not powered on or the power is off.

Technical Support

1. Please contact our technical support team for any issues.
2. Please contact our technical support team for any issues.

Copyright

© 2015 Tenda Technology Co., Ltd. All rights reserved.
This is a registered trademark of Tenda Technology Co., Ltd.
All other trademarks are the property of their respective owners.