

## User Guide

[www.tendacn.com](http://www.tendacn.com)



High Power Wireless N150 USB Adapter

## Copyright Statement

**Tenda**<sup>®</sup> is the registered trademark of Shenzhen Tenda Technology Co., Ltd. All the products and product names mentioned herein are the trademarks or registered trademarks of their respective holders. Copyright of the whole product as integration, including its accessories and software, belongs to Shenzhen Tenda Technology Co., Ltd. Without prior expressed written permission from Shenzhen Tenda Technology Co., Ltd, any individual or party is not allowed to copy, plagiarize, reproduce, or translate it into other languages.

All photos and product specifications mentioned in this manual are for references only. Upgrades of software and hardware may occur; Tenda reserves the right to revise this publication and to make changes in the content hereof without obligation to notify any person or organization of such revisions or changes. If you would like to know more about our product information, please visit our website at <http://www.tendacn.com>.

# Contents

Chapter 1 Product Overview .....	4
1.1 Package Contents (For references only) .....	4
1.2 LED Overview.....	4
1.3 Product Features .....	4
1.4 Applications .....	5
1.5 Before Getting Started.....	5
1.6 Disable other manufacturers' wireless network adapters.....	6
1.7 Maintenance .....	7
Chapter 2 Installation Guide.....	8
2.1 Hardware Install.....	8
2.2 Software Install .....	8
Chapter 3 Use System Built-in Wireless Utility .....	12
3.1 Connect to a Wireless Network --Windows® 7 .....	12
3.2 Connect to a Wireless Network --VISTA .....	14
3.3 Connect to a Wireless Network --Windows® XP.....	17
Chapter 4 Tenda UI Guide .....	21
4.1 Station mode (Client Mode) .....	21

## Tenda Wireless Network Adapter User Guide

---

4.1.1 Available Networks .....	22
4.1.2 Link Information .....	24
4.1.3 Network Profile.....	25
4.1.4 Advanced.....	35
4.1.5 About .....	36
4.1.6 Help .....	37
4.2 AP mode.....	37
4.2.1 Config AP.....	39
4.2.2 Advanced.....	40
4.2.3 Access Control List .....	41
4.2.4 Associate List.....	43
4.2.5 AP Mode under Windows 7.....	43
Appendix 1 Glossary .....	45
Appendix 2 How to Set WPS.....	48
1. Wireless Connection in PBC Mode.....	48
1.1 Enable the router's WPS-PBC feature.....	48
1.2 Perform PBC connection on the UI of the wireless adapter.....	48
1.3 Using the wireless adapter's WPS button to perform PBC connection.....	50
2. Wireless Connections in PIN Mode .....	50
2.1 Enrollee Mode.....	51
2.2 Registrar Mode .....	52
Appendix 3 PSP XLink Mode Setup .....	56

**Tenda Wireless Network Adapter User Guide**

---

To set it up in Win7, do as follows.....	56
If you are using Windows XP, do as follows:.....	61
Appendix 4 FAQ.....	74
Appendix 5 :Regulatory Information .....	79

## Chapter 1 Product Overview

Thank you for choosing this Tenda wireless adapter!

The Tenda wireless adapter supports IEEE wireless standards, and is able to quickly process file transfer, video, multi-media and other applications that require higher bandwidth.

This Tenda wireless adapter also integrates wireless configuration program, which makes it easy and quick to set up the wireless client. Besides, Soft AP is supported for fast wireless network establishment, and WPS encryption supported for you to quickly encrypt and secure your wireless network.

All in all, the Tenda wireless adapter is easy-to-use, and of robust signal, long transmitting distance.

### 1.1 Package Contents (For references only)

- One Wireless network adapter
- Resource CD (with driver and user manual)
- 1.5-meter USB extension cable

### 1.2 LED Overview

The adapter comes with a status LED, which displays a solid light while functioning properly and a blinking light while transferring data.

### 1.3 Product Features

- Supports soft AP feature
- Automatically sense network and adjust transmission rate;
- Comes with 2 operating modes: Infrastructure and Ad-Hoc;

- Access secure networks using WEP, WPA-PSK or WPA2-PSK;
- Wi-Fi Protected Setup™ (WPS) for easy connection to a wireless network;
- Compatible with Windows XP, Windows 2000 Vista, Windows7, MAC and more;

## 1.4 Applications

The Tenda adapter delivers powerful, fast and reliable wireless access to your desktop or notebook computer. It is ideal for use by or in:

- corporate staff who want to stay connected to Internet while moving around;
- ancient buildings, places rented or for temporary use where wiring is such a big mess, a huge cost or hard to reach;
- business or individual always in need of network topology changes;
- business or individual who wants to have a wireless network established fast and simple without the mess of wiring.

## 1.5 Before Getting Started

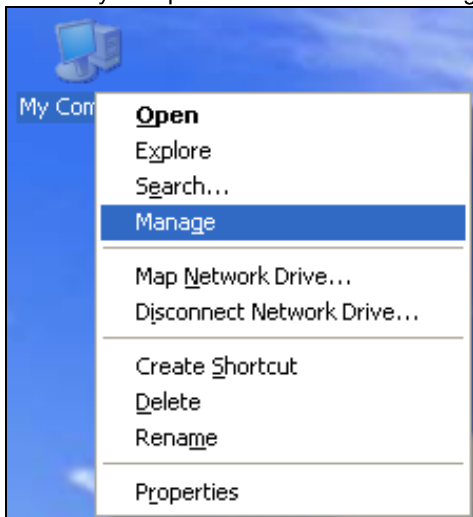
Before installing and using this product, please peruse the entire user guide.

- If you have a built-in wireless adapter, please disable it in Device Manager before installing this Tenda adapter.
- Also, if you have previously installed a different manufacturer's adapter or a different model Tenda adapter, make sure the software and driver are uninstalled before installing the new software. Some utilities may cause a conflict with the new

software.

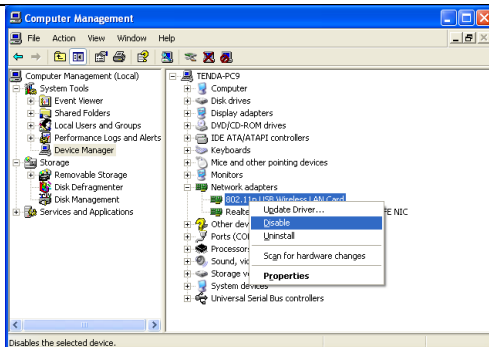
## 1.6 Disable other manufacturers' wireless network adapters

( 1 ) Right click “My Computer” and select “Manage”

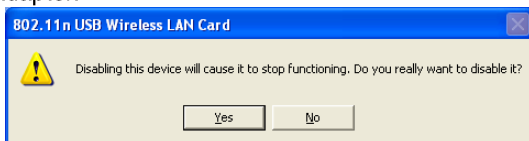


( 2 ) On the Computer Management screen ,select “Device Manager” – “Network adapters” , and right click the network adapter you want to disable and click “Disable”





( 3 ) Click the “Yes” button on the dialogue box to disable the network adapter.



### 1.7 Maintenance

Observe the following to ensure the product continuously stays in good condition.

- Keep the device away from humidity and water;
- DO NOT expose the device to corrosive substances (such as acid and alkali, etc)
- DO NOT expose the device to sunshine or other heat sources;
- Contact Tenda technical staff if you are running into problems that you are not able to solve.

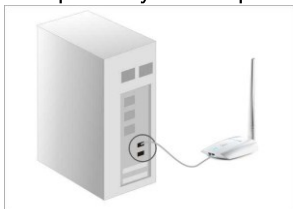
## Chapter 2 Installation Guide

The CD that comes in the package includes both driver and software, which can be installed automatically. This section will walk you through the installation process.

Software install and operation instructions are illustrated in Windows® 7. If you have a different operating system, the screenshots on your computer will look similar to the following examples.

### 2.1 Hardware Install

Turn on your computer and insert the Tenda adapter into an available USB port on your computer.



Or

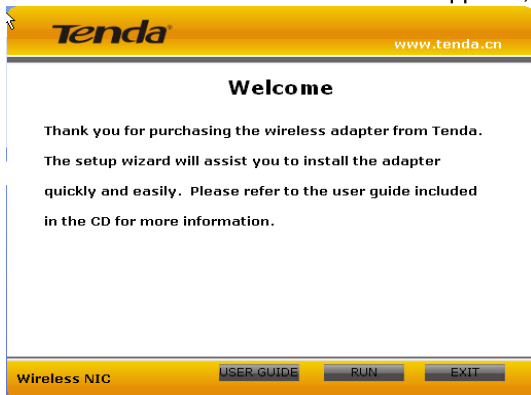


### 2.2 Software Install

(1) If the Found New Hardware Wizard appears, click Cancel and then use the quick install CD to install the driver and software.

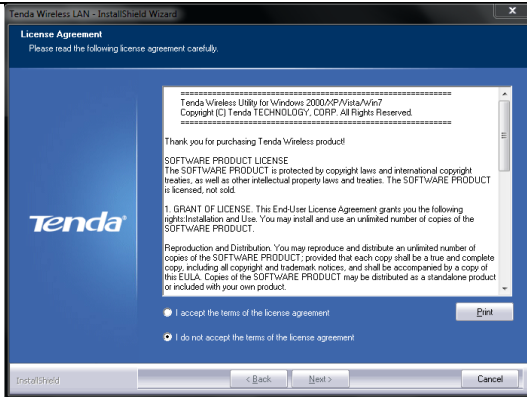


(2) Insert the Tenda Driver CD in your PC's CD-ROM drive. If the CD Autorun function does not automatically start on your computer, double click Tenda.exe. When the autorun screen appears, click Run.

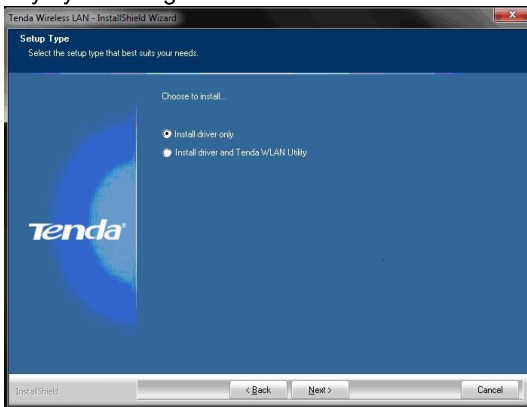


(3) Check I accept the terms of the license agreement and then click Next.

## Tenda Wireless Network Adapter User Guide



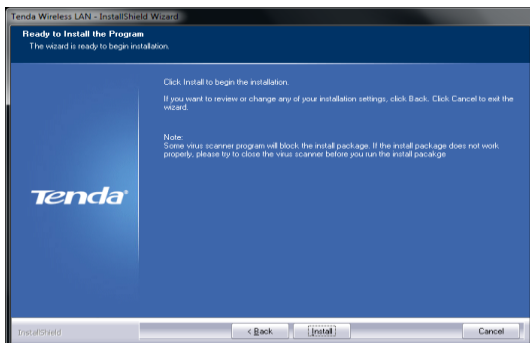
(4) You can either install the standalone driver without Tenda adapter utility by selecting Install driver only or install both driver and Tenda adapter utility by selecting Install driver and Tenda WLAN Utility.



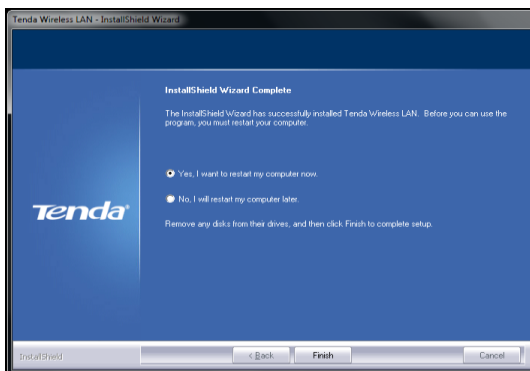
**Note:** If you wish to use Windows system built-in wireless utility, you can install the standalone driver; however, if you want to use

advanced features like WPS, you must also install the Tenda adapter utility.

(5) Click **Install** to install the driver.



(6) Wait till the driver is completely installed and then click **Finish** to exit.



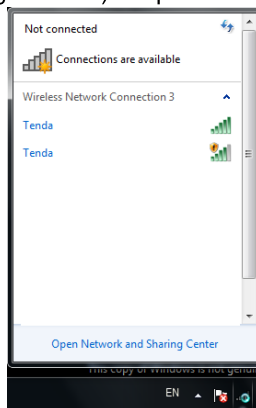
## Chapter 3 Use System Built-in Wireless Utility

This section will walk you through the configuration process of connecting to a wireless network using your PC's OS built-in wireless utility.

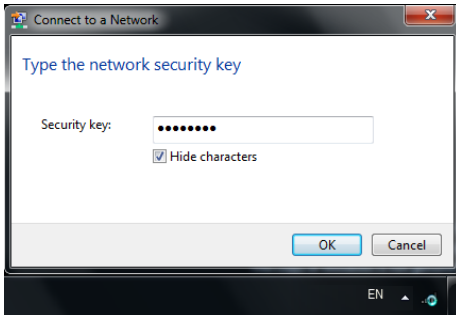
To use Window operating system built-in wireless utility, you must first enable the Wireless Zero Configuration service (enabled by default).

### 3.1 Connect to a Wireless Network --Windows® 7

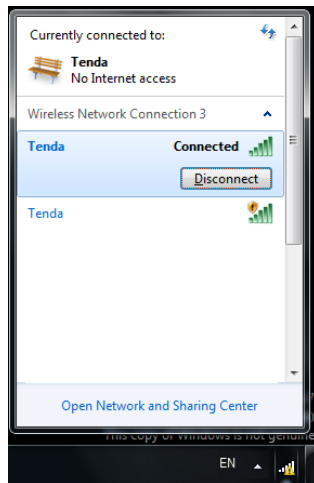
(1) Click the wireless icon in your system tray (lower-right corner). The utility will display any available wireless networks in your area. Click on a network (SSID) and click the Connect button or directly double-click it. If you don't find the desired wireless network, click the refresh icon (upper-right corner) to update the list.




(2) If you are prompted to provide a security key, simply enter it exactly as it is on your wireless router or access point and then click OK.




(3) When Connected appears next to the selected wireless network (SSID), you have successfully connected to it. To disconnect from it, view status, or change wireless properties, etc, simply right-click the SSID.

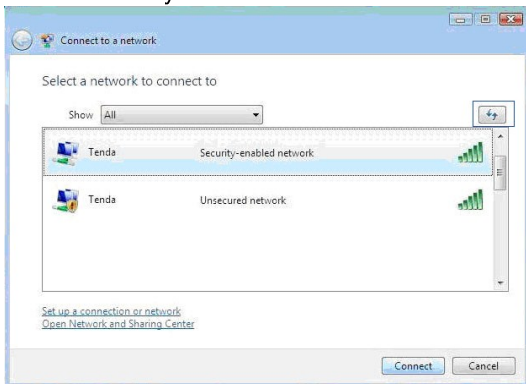


### 3.2 Connect to a Wireless Network --VISTA

(1) Click  (wireless connection icon) from the lower right corner of your desktop and select Connect to a network as seen below.



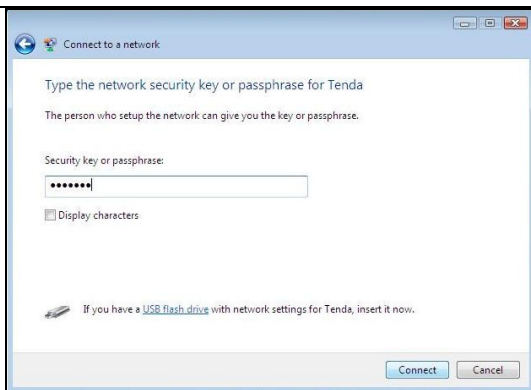
(2) Select the wireless network you wish to connect and click Connect or double click the wireless network. Click  (Refresh button) to update the network list if you don't find the desired wireless network.



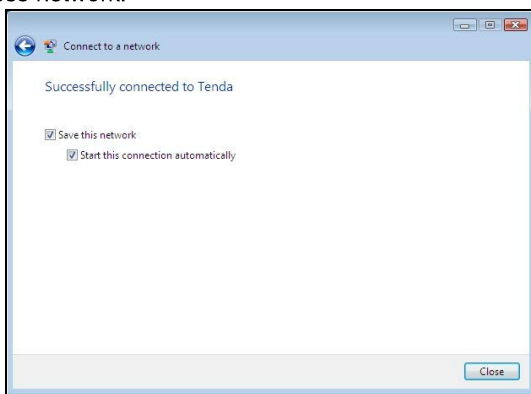
(3) If you are trying to join a secured wireless network, you must first enter a se key and then click Connect.



## Tenda Wireless Network Adapter User Guide



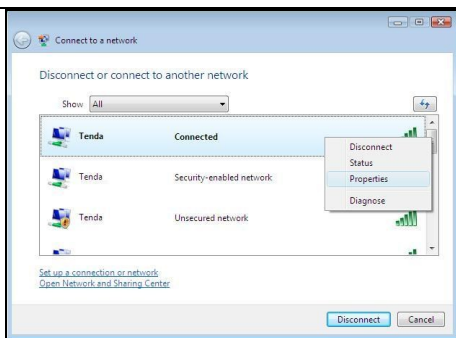
If you see the following screen, you have successfully connected to the wireless network.



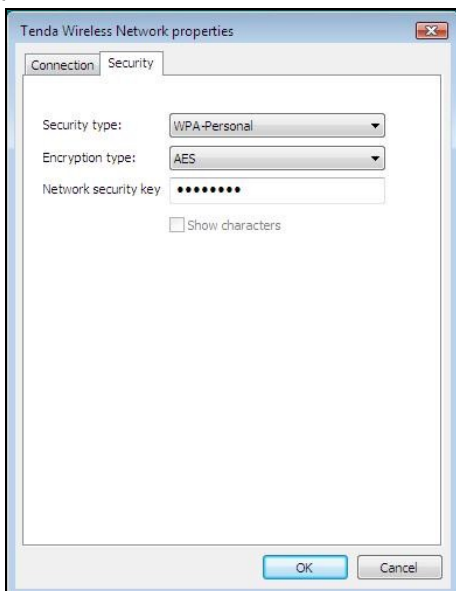
### Note:

a). If you entered a wrong security key, simply right click the wireless network' s SSID and select Properties.

## Tenda Wireless Network Adapter User Guide

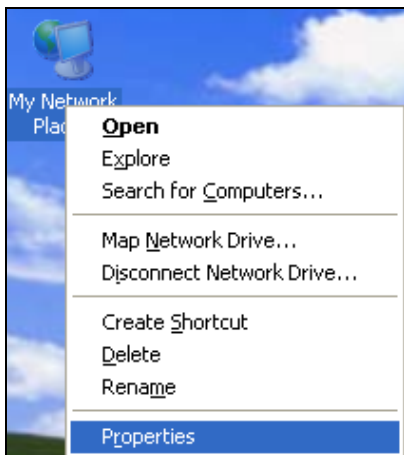


b) You can replace it with a correct security key on the appearing dialogue box.

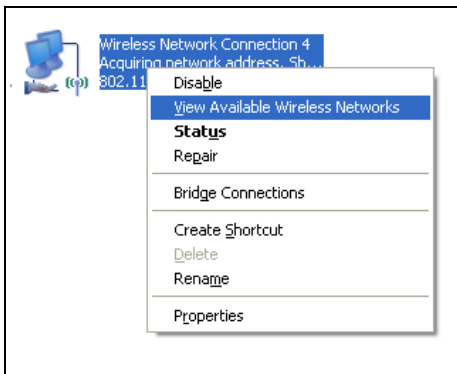


### 3.3 Connect to a Wireless Network —Windows® XP

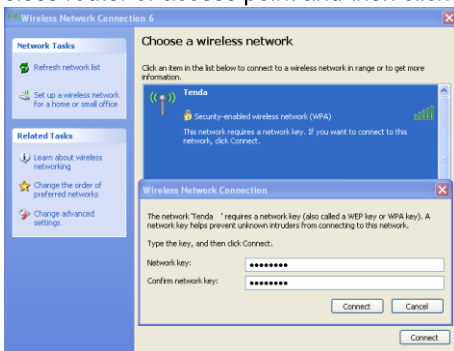
(1) Right-click My Network Places from the desktop and select Properties.



(2) As seen below, Wireless Network Connection displays Not Connected. Right click Wireless Network Connection and select View available wireless networks.



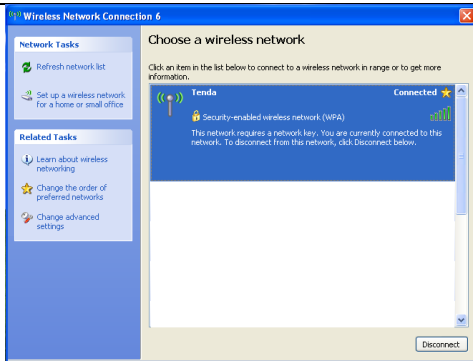
(3) The utility will display any available wireless networks in your area. If you don't see the network you wish to connect to, click the Refresh network list. Click on the network (SSID) you wish to connect to and click the Connect button or directly double click it. If you are prompted to provide a security key, simply enter it (case sensitive) exactly as it is on your wireless router or access point and then click Connect.



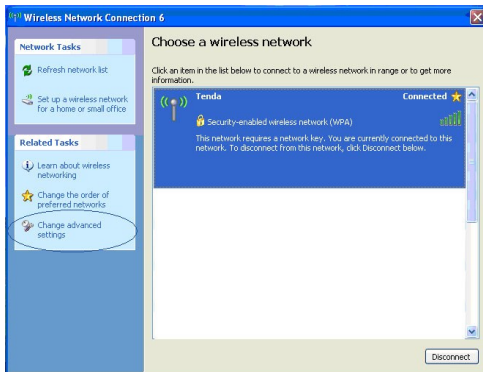
**Note:** If the network you selected is not encrypted, you will not see this dialog box requesting a security key.

(4) When this screen appears, you have successfully connected to your wireless network and can start surfing Internet.

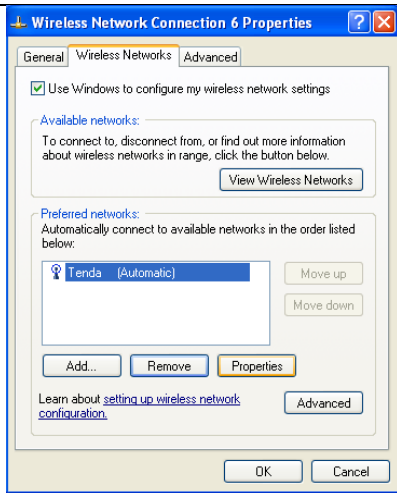
## Tenda Wireless Network Adapter User Guide



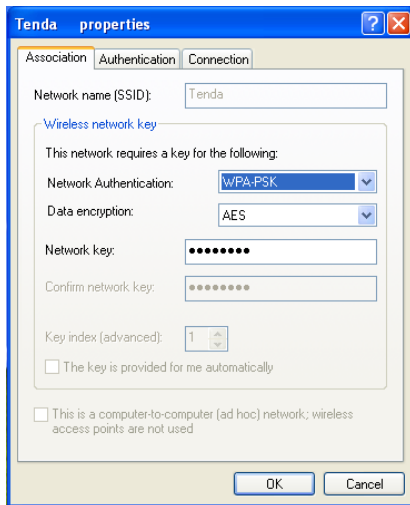
(5) If you entered a wrong security key, simply click Change advanced settings.



(6) Click Wireless Networks and select Properties.



(7) Replace the wrong security key with a correct one on the appearing window.



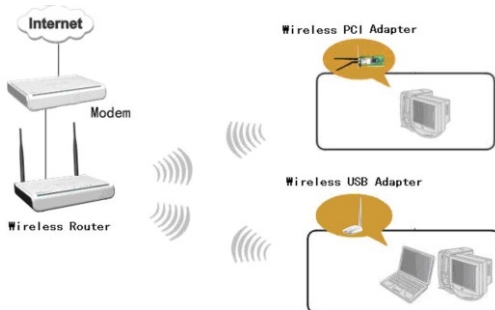
## Chapter 4 Tenda UI Guide

If you select Install driver and Tenda WLAN Utility, then both of them will be installed on your PC. All features on the adapter can be configured and implemented through the Tenda adapter utility (abbreviated to UI).

To start the Tenda UI, select Start→ All Programs→ Tenda Wireless → Tenda Wireless Utility or directly click Tenda Wireless Utility shortcut from your desktop.

### 4.1 Station mode (Client Mode)

Station mode (Client Mode) Overview



It is a common solution to use the wireless network adapter as a client to receive signals.

**Main interface for station mode**



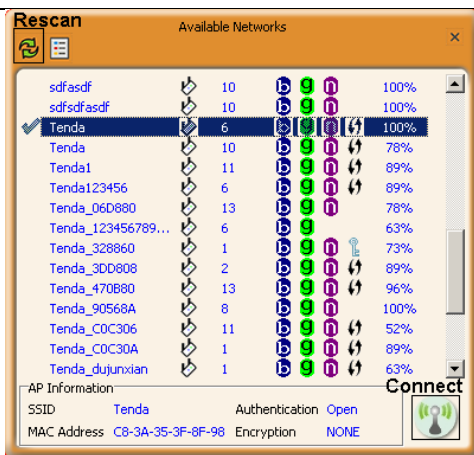
The function buttons on the top(From L to R )are respectively Site Survey, Link Information, Profile, Advanced, About, Help, and MiniSize. While the left column displays Turn On/Off RF, Security /No security, and Signal status.

### 4.1.1 Available Networks

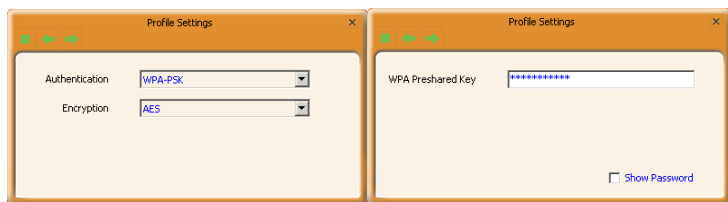
Available Networks display all available wireless networks in the area and lets you see at a glance MAC address, channel, network mode (a/b/g/n), signal strength, authentication mode, encryption mode and/or WPS authentication of each AP. Also, you can select to connect to the desired wireless network.

Before connecting to a wireless network, click Rescan to update the available wireless network list, select a desired wireless network and then click Connect.





If you are prompted to provide a security key, simply enter it exactly as it is on the wireless router or access point you wish to connect and then click Next.



**Note:** If you check Save wireless network upon successful connection, then, after the adapter connects to the network, it automatically saves the network connection information to a profile.

For detailed illustrations of authentication and encryption modes, see below:

**WEP:** Support 10 or 26 Hex characters; 5 or 13 ASCII characters.

**WPA-PSK:** Support 8~63ASCII characters; 8~64Hex characters.

**WPA2-PSK:** Support 8~63 ASCII characters; 8~64 Hex characters.

**WPA-PSK/WPA2-PSK:** Support 8~63 ASCII characters; 8~64 Hex characters.

**Hex** characters include numbers of 0~9 and letters of a~f.

**ASCII** characters include any alphanumeric characters.

### 4.1.2 Link Information

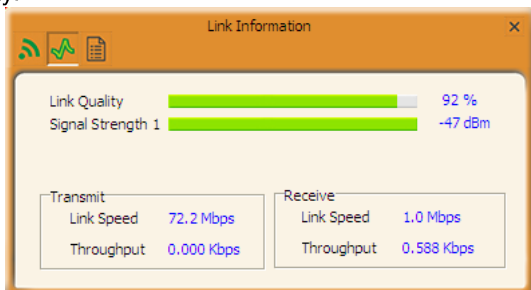
After you have successfully connected to a wireless work, you can click Link Information to view details of the connection.

(1) The Link Status displays the connected AP' s authentication mode, encryption mode and channel, etc.



(2) Below screen displays the signal strength of each antenna and the

link quality.



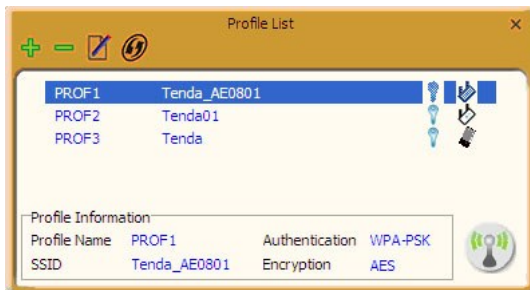
(3) The screen below displays TX (transmit) and RX (receive) traffic statistics. To erase current statistics data, click Reset Counter.



### 4.1.3 Network Profile

Also, you can manually add a profile to connect to a specified wireless network. After the adapter joins the network, it automatically saves the network connection information to a profile, which can be used by adapter utility. The next time you launch adapter utility, it will automatically connect to the network you previously joined if there's no change in the network information. If you wish to join a hidden network (A hidden network does not broadcast its SSID), you must

add a profile to manually connect to it. Fields on screenshot are described below:



**Add:** Click to create a new wireless network profile;



**Delete:** Click to remove an existing profile;



**Edit:** Click to edit a current profile;



**Add WPS Profile:** WPS setting requires that the connecting wireless device support WPS function. WPS helps you to fulfill wireless encryption fast as well as secure your wireless network. For detailed setting steps, refer to appendix2.

An 802.11 wireless adapter (WNIC) can operate in two modes known as infrastructure mode and ad hoc mode:




**Infrastructure:** In an infrastructure mode network the wireless adapter needs a wireless access point or a wireless router for communication. All wireless nodes in an infrastructure mode network connect to an access point or a wireless router.

**Ad-hoc:** A wireless ad hoc network does not rely on a preexisting infrastructure, such as routers in wired networks or access points in managed (infrastructure) wireless networks. It typically refers to any set of networks where all devices have equal status on a network and are free to associate with any other ad hoc network device in link range in peer to peer communication mode.

### Profile Set Up for Infrastructure Mode

If you wish to connect your wireless adapter to an existing wireless AP or wireless router, please select the Infrastructure mode. Setting up infrastructure mode for wireless connectivity is not that hard, all we need is to follow below instructions.



- (1) Click  (Add) and select Infrastructure from the appearing dialog box appear;
- (2) Specify a profile name and the SSID (wireless network name) you wish to connect;
- (3) Specify the authentication mode and encryption mode, say, "WPA –PSK" and "AES";
- (4) Enter the security key and click Next.