

Package Contents

Unpack the box and check the following items:

- ▶ W568R
- ▶ Power Adapter
- ▶ CD-ROM
- ▶ Quick Install Guide

If any of the above items are incorrect, missing, or damaged, please contact your Tenda reseller for immediate replacement.

Troubleshooting

Q What should I do if I forget my device's login password (How do I reset my router)?

A: Reset your router by pressing the hardware WPS/Reset button on the router for about 7 seconds and releasing it when device system LED turns off.

Note: All settings will be deleted and restored to factory defaults once you pressed this button.

Q I can't log in to the device's web utility after entering 192.168.0.1 in my web browser, what should I do?

A: 1. Make sure your PC is connected to one of the LAN ports 1-3 on the device and corresponding LAN LED is illuminated.
2. a. Right click "My Network Places" and select "Properties";
b. Right click "Local Area Connection", select "Status" and then click "Support" to view your PC's IP address. It should be 192.168.0.x (where x represents any number from 2 to 254).
If not, you should re-config it properly.
c. Restart your PC if you can not obtain an IP address (Please make sure you have opened the DHCP function of your router and you have made your computer to obtain an IP address automatically.)
3. Try a different browser or delete your existing browser's cache and cookies.
4. Try a different PC.
Reset the device and log on again if you are still not able to access it. (To reset the device, refer to FAQ 1)

Q How do I distinguish between 2.4GHz and 5GHz wireless networks?

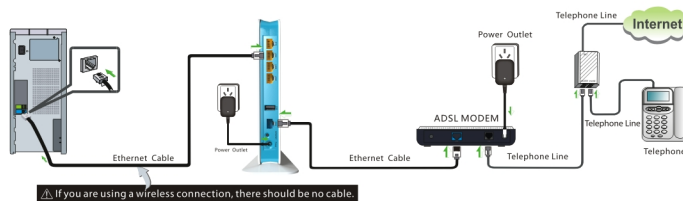
1. If your network adapter only operates on 2.4GHz band then it is unable to receive 5GHz wireless signal. SSID for 2.4GHz wireless network is Tenda_XXXXXX by default (where X represents the last 6 characters in device MAC address);
2. If you are using a dual band adapter, then you shall have both 2.4GHz and 5GHz wireless networks in your search results (while SSID for 5GHz wireless network is Tenda_5_XXXXXX by default, where X represents the last 6 characters in device MAC address).
3. You can also define different SSIDs for both bands on the web utility.

Manufacturer: SHENZHEN TENDA TECHNOLOGY CO., LTD.
Address: Tenda Industrial Park, NO. 34-1, Shilong Rd., Shiyuan Town, Bao'an District, Shenzhen, P. R. China 518108
Technical Support: support@tenda.com.cn (Agent), support02@tenda.com.cn (End customers)
Telephone: 0086-0755-2765 7180
Email: sales@tenda.com.cn
Website: http://www.tendacn.com
10012696

1 Hardware Install

A Follow below diagram to connect your devices
If you are using a DSL modem for Internet access.

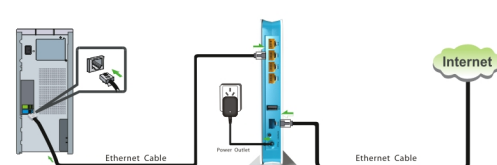
- Connect the telephone line from your ISP side to the modem and then connect the modem to the WAN port on the router using an Ethernet cable.
- Connect one of the LAN ports 1-3 on the router to your PC using another Ethernet cable.
- Make sure you have connected all devices the way shown in below diagram.



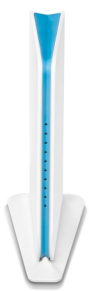
2. If you are using a wireless connection, there should be no cable.

B Follow below diagram to connect your devices
If you are not using a DSL modem for Internet access.

- Connect the Ethernet cable from your ISP side to the WAN port on the router.
- Connect one of the LAN ports 1-3 on the router to your PC using another Ethernet cable.
- Make sure you have connected all devices the way shown in below diagram.



C Confirm connections by checking LED status. (Front Panel Overview)

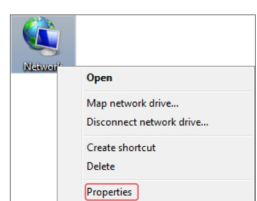


	IPTV LED	A Solid light: Corresponding IPTV port is correctly connected Blinking: Transmitting data. Off: Ethernet cable unplugged.		2.4G LED	A Solid light: Wireless is activated. Blinking: Transmitting data. Off: Wireless is deactivated.
	LAN/1/2/3 LED	A Solid light: Corresponding LAN port is correctly connected Blinking: Transmitting data. Off: Ethernet cable unplugged.		5G LED	A Solid light: Wireless is activated. Blinking: Transmitting data. Off: Wireless is deactivated.
	USB LED	A Solid light: USB port is correctly connected Off: No USB device attached.		WPS LED	Blinking: Performing WPS authentication on a client device. Off: WPS function is currently inoperative or authentication completed.
	WAN LED	A Solid light: Corresponding WAN port is correctly connected Blinking: Transmitting data. Off: Ethernet cable unplugged.		Power/Sys LED	Blinks while system is functioning correctly.

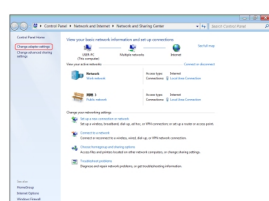
2 Config TCP/IP Settings

If you're using Windows 7, do as follows:

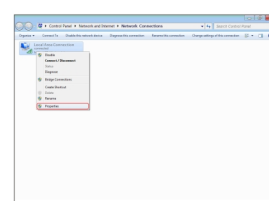
A Right click on "Network" and choose "Properties".
Or click on "Start" -> "Control panel" -> "Network and internet" -> "Network and sharing center"



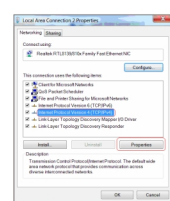
B Click "Change adapter settings".



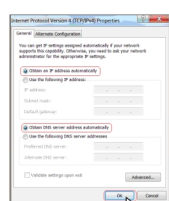
C Right click "Local Area Connection" and select "Properties".



D Select "Internet Protocol Version 4 (TCP/IPv4)" and click "Properties".



E Select "Obtain an IP address automatically" and then click Ok. Then you will go back to the step D. Please click on Ok in that page to save the settings completely.



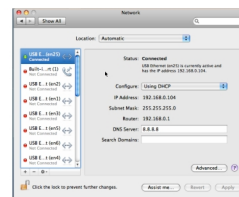
2 Config TCP/IP Settings

If you're using MAC OS, do as follows:

A Click "System Preferences" and then "Network".



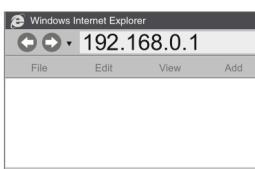
B Select "Using DHCP" from "Configure" drop-down list.



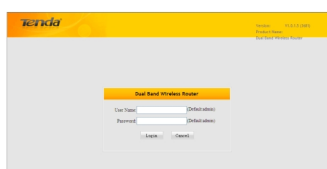
3 Internet Connection Setup

The device's default LAN IP is 192.168.0.1. You can change it according to your own needs. This Quick Install Guide uses the default for demonstration purpose.

A Log in to device's Web utility
Launch a web browser, in the address bar input 192.168.0.1 and press "Enter".



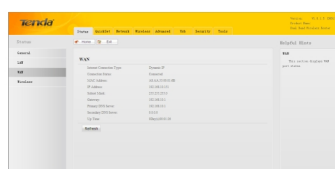
B Enter "admin" (factory default) in both user name and password fields on login window and click "Login".



C You shall come to below screen. This page is about your internet type. If you have got an account and password from your internet service provider (your cable company), please choose "PPPOE" and type the information correctly. If you got nothing, please choose "DHCP". If you are using other types, please click on "Advanced"



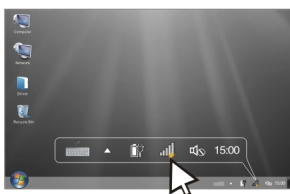
D After you configured required settings click "OK" and go to Status interface to view WAN connection status. You can start accessing Internet when "Connected" is displayed.



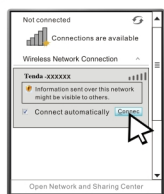
4 Connect to Device Wirelessly

If you are using Windows 7 or Vista, do as follows.

A Make sure you have enabled the wireless adapter on your PC. Click wireless network icon at the right bottom of your desktop.



B Select the wireless network you want to connect to and click "Connect" (The device's default SSID is: "Tenda_XXXXXX" where XXXXXX stands for the last six characters in the device's MAC address. You can find the MAC address in the label attached to the device's back panel). If you have encrypted the network, please input the password correctly in that pop-up and then connect to it. If the network is unencrypted as the below picture, just click on "Connect" and you will connect to it directly.

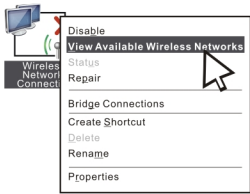


C When you see "Connected" displayed next to the wireless network you selected, it means you have connected to the wireless network successfully.

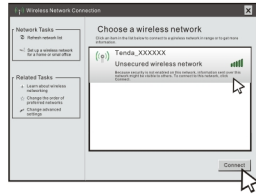


If you're using Windows XP, do as follows:

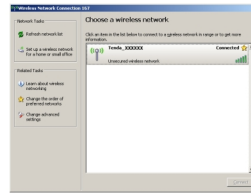
A Make sure you have enabled the wireless adapter on your PC. Click "Start" -> "Control Panel" -> "Network and Internet Connections" and right click "Wireless Network Connection" icon and select "View Available Wireless Networks".



B Select the wireless network you want to connect to and click "Connect" (The device's default SSID is: "Tenda_XXXXXX" where XXXXXX stands for the last six characters in the device's MAC address. You can find the MAC address in the label attached to the device's back panel). If you have encrypted the network, please input the password correctly in that pop-up and then connect to it. If the network is unencrypted as the below picture, just click on "Connect" and you will connect to it directly.



C When you see "Connected" displayed next to the wireless network you selected, it means you have connected to the wireless network successfully.



NCC Notice

經型式認證合格之低功率射頻電機，非經許可，公司、商號或使用者均不得擅自變更頻率、加大功率或變更設計之特性及功能。
低功率射頻電機之作用不得影響飛航安全及干擾合法通信；經發現有干擾現象時，應立即停用，並改善至無干擾時方得繼續使用。前項合法通信，指依電信規定作業之無線電通信。低功率射頻電機須忍受合法通信或工業、科學及醫療用電波輻射性電機設備之干擾。
5.25 ~ 5.35GHz 限室內使用 (802.11a used)

FCC Statement

Operations in the 5.15-5.25GHz band are restricted to indoor usage only. This device complies with Part 15 of the FCC Rules. Operation is subject to the following two conditions: (1) This device may not cause harmful interference, and (2) this device must accept any interference received, including interference that may cause undesired operation.

This equipment has been tested and found to comply with the limits for a Class B digital device, pursuant to Part 15 of the FCC Rules. These limits are designed to provide reasonable protection against harmful interference in a residential installation. This equipment generates, uses and can radiate radio frequency energy and, if not installed and used in accordance with the instructions, may cause harmful interference to radio communications. However, there is no guarantee that interference will not occur in a particular installation. If this equipment does cause harmful interference to radio or television reception, which can be determined by turning the equipment off and on, the user is encouraged to try to correct the interference by one of the following measures:

- Reorient or relocate the receiving antenna.
- Increase the separation between the equipment and receiver.
- Connect the equipment into an outlet on a circuit different from that to which the receiver is connected.
- Consult the dealer or an experienced radio/TV technician for help.

FCC Caution:

Any changes or modifications not expressly approved by the party responsible for compliance could void the user's authority to operate this equipment.

This transmitter must not be co-located or operating in conjunction with any other antenna or transmitter.

Radiation Exposure Statement

This equipment complies with FCC radiation exposure limits set forth for an uncontrolled environment. This equipment should be installed and operated with minimum distance 20cm between the radiator & your body.

NOTE:

- (1) The manufacturer is not responsible for any radio or TV interference caused by unauthorized modifications to this equipment.
- (2) To avoid unnecessary radiation interference, it is recommended to use a shielded RJ45 cable



CE Mark Warning

Operations in the 5.15-5.25GHz band are restricted to indoor usage only. This is a Class B product in a domestic environment, this product may cause radio interference, in which case the user may be required to take adequate measures

NOTE:

- (1) The manufacturer is not responsible for any radio or TV interference caused by unauthorized modifications to this equipment.
- (2) To avoid unnecessary radiation interference, it is recommended to use a shielded RJ45 cable

"The product can be used without restrictions in the following countries: all EU member states except France and Norway.
The product can be used with limitations in the following countries: France (for indoor use only) and Norway (20 km in the center of Ny-Liesund)."

Note:

This Quick Install Guide aims to help you to quickly setup the device for Internet access. Pictures herein are for demonstration purpose only. Actual image or appearance may vary. For more and advanced features and settings, please go to www.tenda.cn or www.tendacn.com to download latest User Guide.