

**Tenda**<sup>®</sup>

V4.1

# **User Guide**

[www.tenda.cn](http://www.tenda.cn)

Tenda Wireless Network Adapter

## Copyright Statement

**Tenda**<sup>®</sup> is the registered trademark of Shenzhen Tenda Technology Co., Ltd. All the products and product names mentioned herein are the trademarks or registered trademarks of their respective holders. Copyright of the whole product as integration, including its accessories and software, belongs to Shenzhen Tenda Technology Co., Ltd. Without the permission of Shenzhen Tenda Technology Co., Ltd, any individual or party is not allowed to copy, plagiarize, reproduce, or translate it into other languages.

All the photos and product specifications mentioned in this guide are for references only. Upgrades of software and hardware may occur, and if there are changes, Tenda is not responsible for notifying in advance. If you would like to know more about our product information, please visit our website at [www.tenda.cn](http://www.tenda.cn).

# Contents

<b>Chapter 1 Product Introduction.....</b>	<b>2</b>
1.1 Package Contents.....	2
1.2 LED Indicator Description.....	2
1.3 Product Features.....	3
1.4 Product Usage.....	3
1.5 Before Installation.....	4
1.6 Disable other manufacturers' wireless network adapters.....	4
1.7 Product Maintenance.....	6
<b>Chapter 2 Installation Guide.....</b>	<b>7</b>
2.1 Hardware Installation.....	7
2.2 Software Installation.....	7
<b>Chapter 3 How to use the Windows Built-in Wireless Configuration.....</b>	<b>15</b>
3.1 Wireless Network Connection under Windows XP.....	15
3.2 Wireless Network Connection under Windows 7.....	19
3.3 Wireless Network Connection under Windows 8.....	21
<b>Appendix 1: Acronyms and Terms.....</b>	<b>25</b>

## **Chapter 1 Product Introduction**

Thank you for choosing this Tenda wireless adapter!

The Tenda wireless adapter supports IEEE wireless standards, and is able to quickly process file transfer, video, multi-media and other applications that require higher bandwidth.

This Tenda wireless adapter also integrates wireless configuration program, which makes it easy and quick to set up the wireless client. Besides, Soft AP is supported for fast wireless network establishment, and WPS encryption supported for you to quickly encrypt and secure your wireless network.

All in all, the Tenda wireless adapter is easy-to-use, and of robust signal, long transmitting distance.

### **1.1 Package Contents**

One Wireless network adapter

One Software CD (includes user guide and driver)

The above list is for your reference only, the actual contents may differ according to the product you purchase.

### **1.2 LED Indicator Description**

There is one status LED indicator on the side of the wireless network adapter. It lights up and stays ON when working correctly, and flashes when transferring data.

### **1.3 Product Features**

- Detects wireless network and adjusts transmitting rate automatically
- Provides two working modes: Infrastructure and Ad-Hoc
- Supports WEP data encryption and WPA-PSK/WPA2-PSK encryption methods
- Supports WPS (Wi-Fi Protected Setup) encryption to secure your wireless network
- Complies with Windows 7/XP/ 2000/Vista, Linux, MAC OS, etc.

### **1.4 Product Usage**

This Tenda Wireless Adapter offers a fast, reliable and extendable solution for wireless access.

It is mostly used in the following circumstances:

Enables staff members who require higher mobility, to have access to the wireless network anywhere inside their company.

Enables wireless communication for companies or places which are not suitable for wired LAN installation because of budget or building environment restrictions, such as historical buildings, rentals, or places for short-term usage.

Suitable for Enterprises or individuals requiring to regularly alter the networking topology

Helps enterprises or individuals who would like to use wireless to establish wireless network quickly and frees them from the

trouble of cable distribution.

### **1.5 Before Installation**

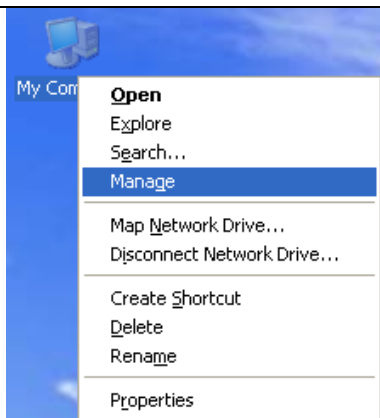
1. Please read through the whole user guide before you install and use this product.

2. Please close or uninstall the configuration programs of other manufacturers' before you install the configuration programs of Tenda network adapters to avoid possible UI (user interface) conflict.

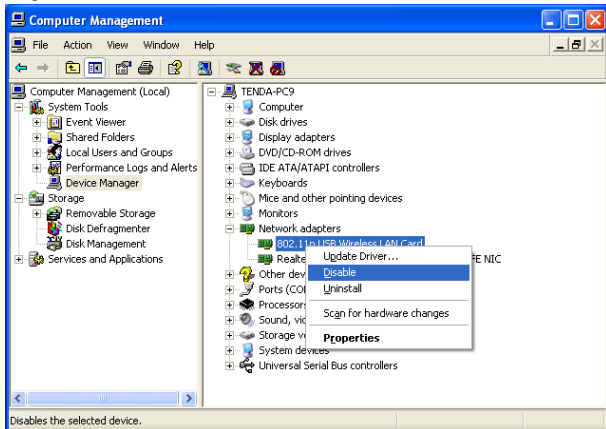
3. To avoid possible network conflicts between this Tenda network adapter and those of other manufactures', we recommend that you first disable the network adapters of other manufacturers before installaing the driver.

### **1.6 Disable other manufacturers' wireless network adapters**

1. Right click "My Computer" and select "Manage"

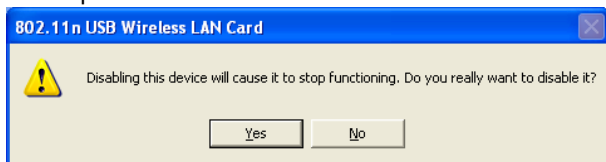


2. On the Computer Management screen ,select “ Device Manager” — “Network adapters”, and right click the network adapter you want to disable and click “Disable”



3. Click the “Yes” button on the dialogue box to disable the

network adapter.



## 1.7 Product Maintenance

Please keep the product away from water and humid environment to guarantee its normal performance

Protect it against hazardous substances (such as acids, alkalis etc).

Please don't directly expose the adapter to the sunlight or excessive heat.

Please contact Tenda tech support if any problems occur.



---

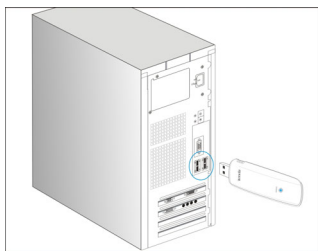
## Chapter 2 Installation Guide

This chapter will guide you through the process of installing the network adapter software package, with the included software CD. The package integrates driver and configuration software. Thus, when you are installing the driver, the configuration software will be installed automatically as well.

The software installation steps and operating guide in this user guide are explained under Windows XP, Installation steps for other operating systems are similar.

### 2.1 Hardware Installation

Please insert the Wireless USB Adapter into the USB port of your computer.



或

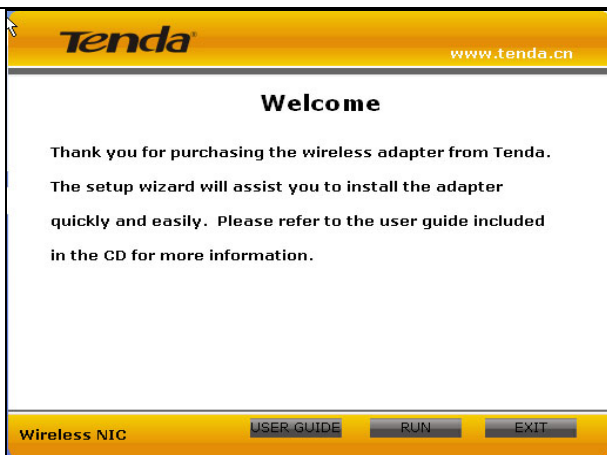


### 2.2 Software Installation

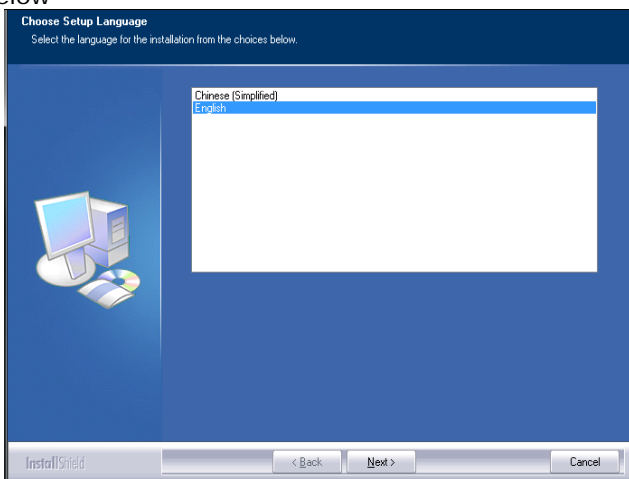
1. When The “Found New Hardware Wizard” system dialogue pops up, we recommend that you select” Cancel” and use the included Setup Wizard software CD for fast installation.



2. Put the included software CD into the CD drive of your computer, and the driver should run automatically, a Welcome screen should pop up, just click the “RUN” button. ( Double click “Tenda.exe” in the software CD and manually install when it doesn’t auto-run).

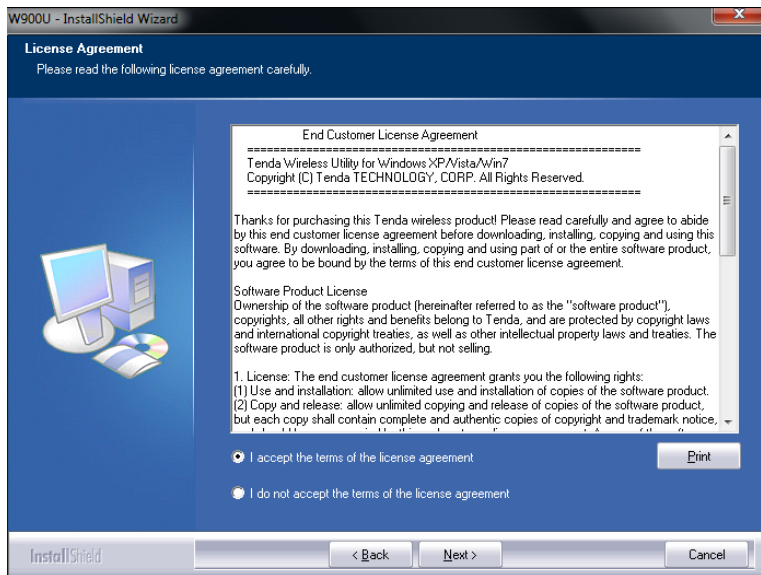


3. Select the language for the installation from the choices below

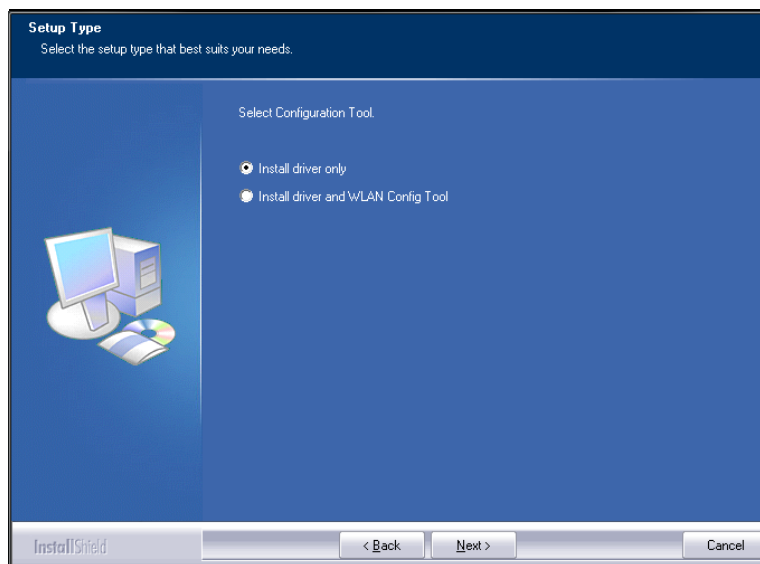


4. Select "I accept the terms of the license agreement" and click

“Next”.

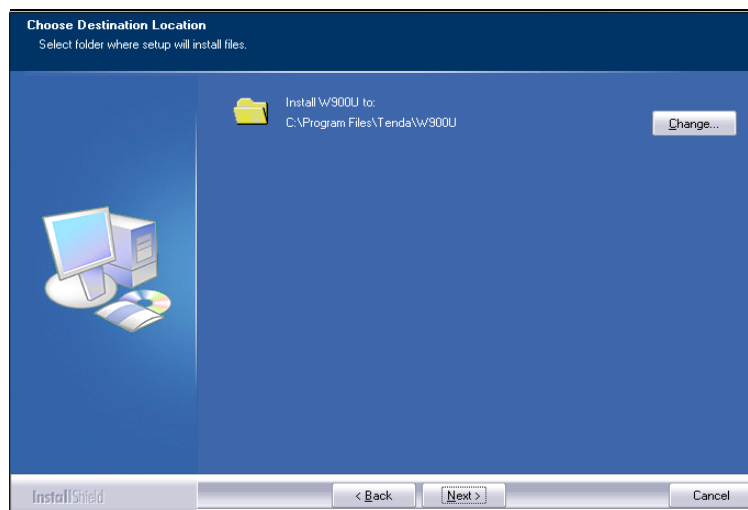


5. Two set up types are provided: one is “Install driver only” ,the other is “Install driver and Tenda WLAN Utility”.

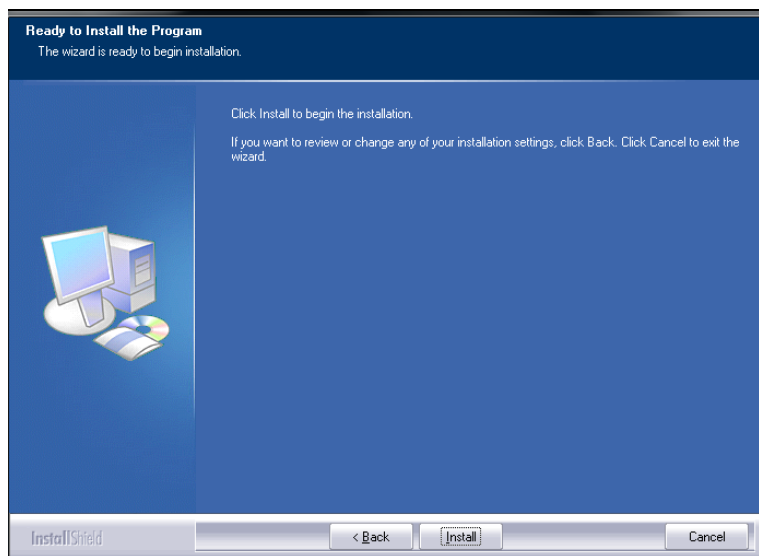


NOTE: you may select the first method when you are accustomed to use the WINDOWS built-in wireless configuration program. However, this program doesn't support AP mode, WPS, and the WPS button on the wireless adapter. To use these advanced features, the second method is recommended.

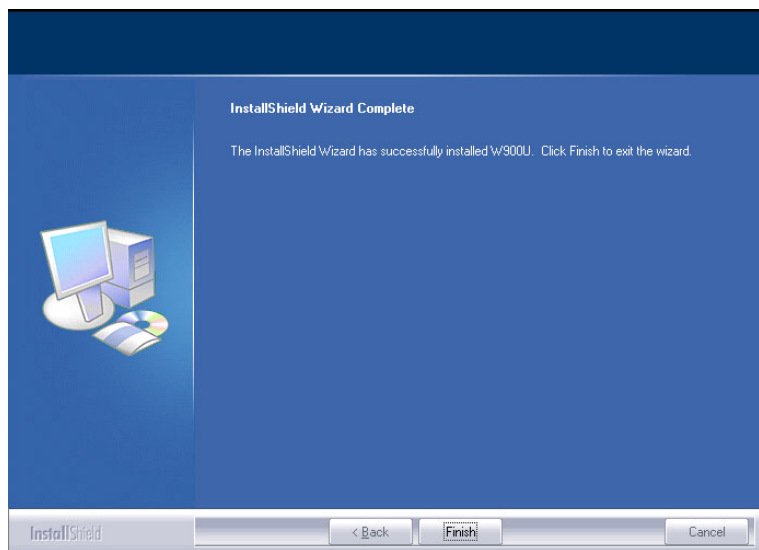
6. Select folder where setup install files.



7. Click "Install" to begin the driver installation.



8. Click "Finish" to complete the installation.





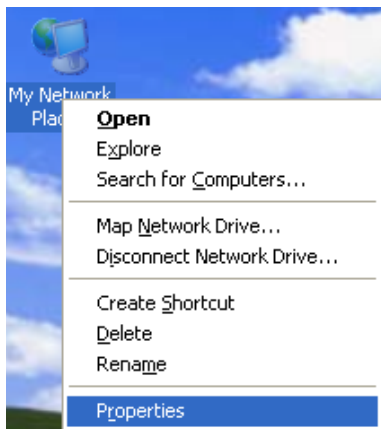
## Chapter 3 How to use the Windows Built-in Wireless Configuration

This chapter explains to users who don't install Tenda configuration program how to use Windows Built-in Wireless Configuration to connect to the wireless network .

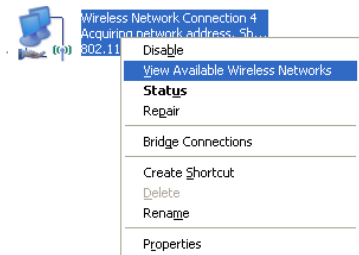
Use of the Windows Built-in Wireless Configuration requires enabling Wireless Zero Configuration service(the default is enabled).

### 3.1 Wireless Network Connection under Windows XP

1. Right click “My Network Places” on the desktop and select “Properties”.

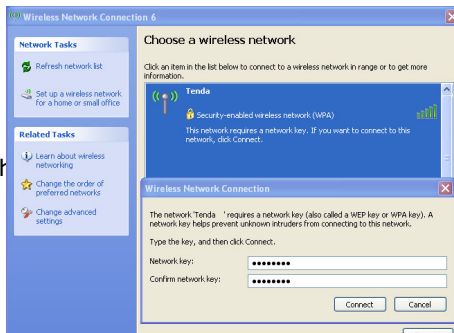


2. Open the network connection. Right click “Wireless Network Connection” and select “View Available Wireless Networks” as shown below.



3. On the right of the screen displayed are the currently scanned wireless networks. If the one you want to connect has not been scanned, click “Refresh Network List” to update the network list.

4. Select the wireless network you want to connect, and click “Connect” or double click this wireless network. Input the key in the key dialogue box (the key input is case-sensitive) then click “Connect”.

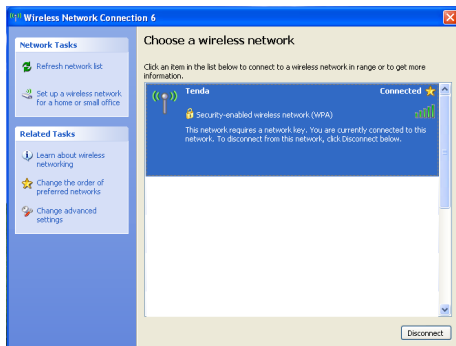


NOTE: If th

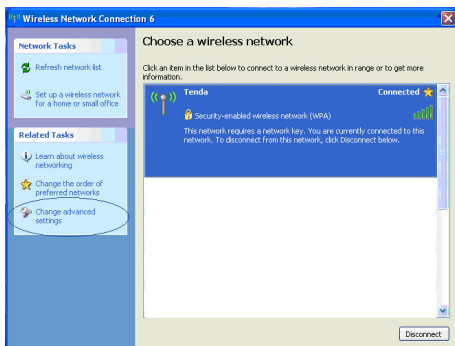
ng to is not

encrypted, the key dialogue box will not pop up.

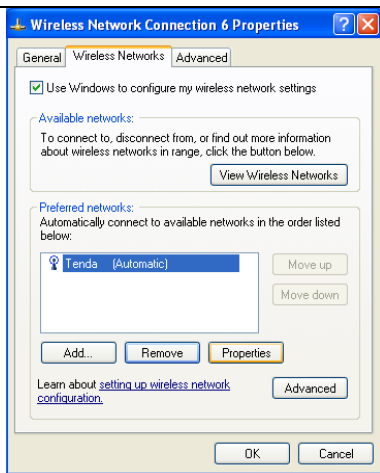
When it shows “Connected” as the picture below, then you can enjoy wireless access to Internet now.



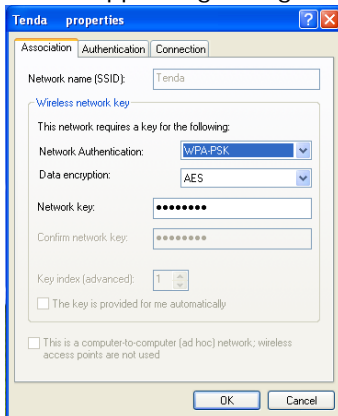
5. You can modify wireless network key from “Change advanced settings”.



6. Select “Wireless Networks” and choose the one you want to modify, and then click “Properties”.



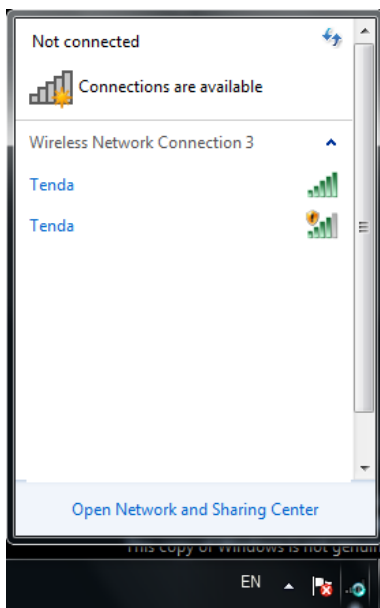
7. Modify the key in the appearing dialogue box.



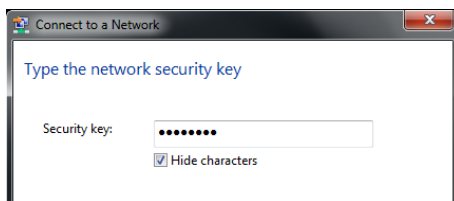
### 3.2 Wireless Network Connection under Windows 7

1. Click the wireless connection in the lower right corner of the

computer's desktop to view the available wireless networks. Select the wireless network you wish to connect and click "Connect" or double click the wireless network to connect. If you don't find the specified one, please click the refresh icon in the upper right corner to update the list.



2.If the wireless network you are connecting is encrypted, you'll be prompted to enter the key. Click "Ok" after you enter the correct key.



3. It shows “Connected” after successfully connected. You can disconnect it, view its status or modify the wireless network properties by right click the wireless network

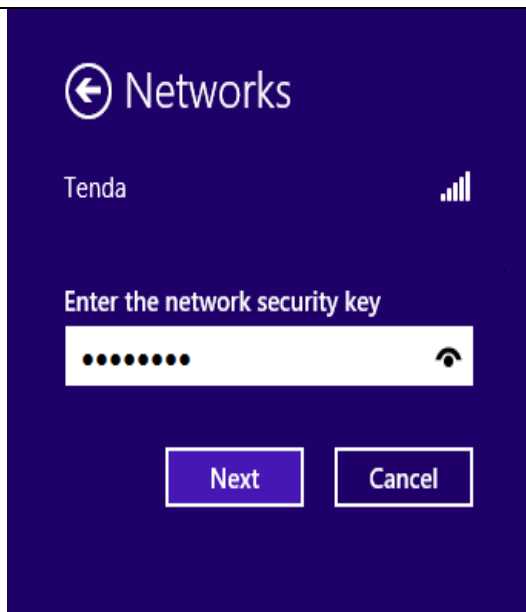


### 3.3 Wireless Network Connection under Windows 8

1. Click the wireless connection in the lower right corner of the computer's desktop to view the available wireless networks. Select the wireless network you wish to connect and click "Connect" or double click the wireless network to connect.

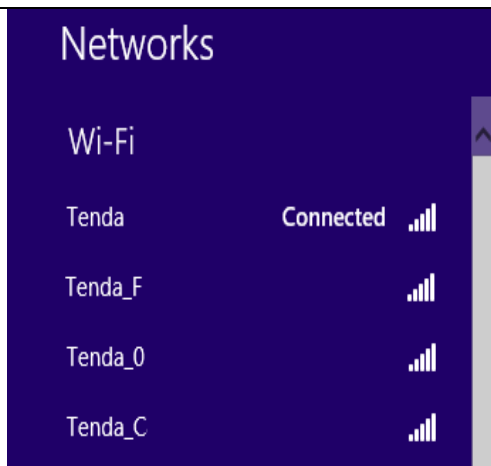


2. If the wireless network you are connecting is encrypted, you'll be prompted to enter the key. Click "Next" after you enter the correct key.



3. It shows "Connected" after successfully connected.





## Appendix 1: Acronyms and Terms

**WLAN** Wireless Local Area Network

**802.11** A family of specifications developed by the IEEE for WLAN technology.

**802.11a** An extension to 802.11 WLAN standards that provides up to 54 Mbps transmission in the 5 GHz UNI radio band.

**802.11b** An extension to 802.11 WLAN standard that provides up to 11 Mbps transmission in the 2.4 GHz ISM radio band. 802.11b uses DSSS modulation.

**802.11g** An extension to 802.11 WLAN standard that provides up to 54 Mbps transmission in the 2.4 GHz ISM radio band. 802.11g uses OFDM modulation and is backwards compatible with 802.11b.

**802.11n** higher transmission rate, supports Multi-Input Multi-Output(MIMO) technology.

**WEP** Wired Equivalent Privacy. A security protocol for WLANs defined in the IEEE 802.11 standard.

**WPA** Wireless Protected Access, adopts rotating keys.

**RSN** Robust Security Network, A substitute for WPA, and it adopts 802.1x standard and advanced encryption

**ICS** Microsoft Internet Connection Sharing enables multi-computer to share access to Internet via one PC.

## FCC Statement

Operations in the 5.15-5.25GHz band are restricted to indoor usage only.

This device complies with Part 15 of the FCC Rules. Operation is subject to the following two conditions: (1) This device may not cause harmful interference, and (2) this device must accept any interference received, including interference that may cause undesired operation.

This equipment has been tested and found to comply with the limits for a Class B digital device, pursuant to Part 15 of the FCC Rules. These limits are designed to provide reasonable protection against harmful interference in a residential installation. This equipment generates, uses and can radiate radio frequency energy and, if not installed and used in accordance with the instructions, may cause harmful interference to radio communications. However, there is no guarantee that interference will not occur in a particular installation. If this equipment does cause harmful interference to radio or television reception, which can be determined by turning the equipment off and on, the user is encouraged to try to correct the interference by one of the following measures:

- Reorient or relocate the receiving antenna.
- Increase the separation between the equipment and receiver.
- Connect the equipment into an outlet on a circuit different from that to which the receiver is connected.
- Consult the dealer or an experienced radio/TV technician for help.

FCC Caution: Any changes or modifications not expressly approved by the party responsible for compliance could void the user's authority to operate this

equipment.

This transmitter must not be co-located or operating in conjunction with any other antenna or transmitter.

### **Radiation Exposure Statement**

This equipment complies with FCC radiation exposure limits set forth for an uncontrolled environment.

## **NCC Notice**

經型式認證合格之低功率射頻電機，非經許可，公司、商號或使用者均不得擅自變更頻率、加大功率或變更設計之特性及功能。

低功率射頻電機之作用不得影響飛航安全及干擾合法通信；經發現有干擾現象時，應立即停用，並改善至無干擾時方得繼續使用。前項合法通信，指依電信規定作業之無線電信。低功率射頻電機須忍受合法通信或工業、科學及醫療用電波輻射性電機設備之干擾。

5.25 ~ 5.35GHz 限室內使用 (802.11a used)

## **CE Mark Warning**

Operations in the 5.15-5.25GHz band are restricted to indoor usage only.

This is a Class B product In a domestic environment, this product may cause radio interference, in which case the user may be required to take adequate

measures

NOTE:(1)The manufacturer is not responsible for any radio or TV interference caused by unauthorized modifications to this equipment.