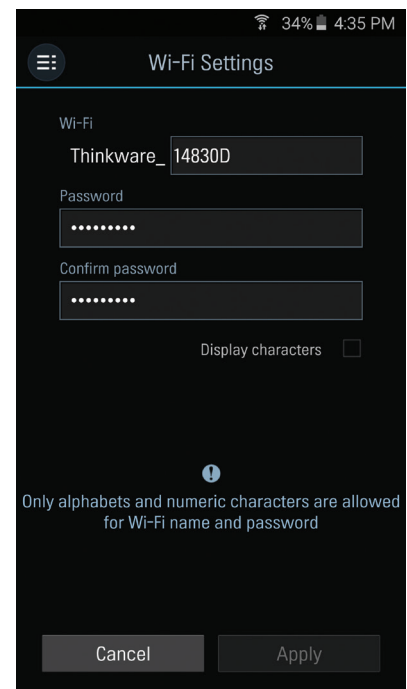


## 3-2-5. Settings > Wi-Fi Settings

### ▶ Wi-Fi Settings

↳ Sets the Wi-Fi name and/or password



Wi-Fi Settings

Wi-Fi

Thinkware\_14830D

Password

.....

Confirm password

.....

Display characters

! Only alphabets and numeric characters are allowed for Wi-Fi name and password

Cancel Apply

## 3-2-6. Information

- ▶ **App Information** : Displays current version and latest available version
- ▶ **Dash cam information** : Displays dash cam information
- ▶ **GPS Information** : Displays GPS information and provides GPS reset option

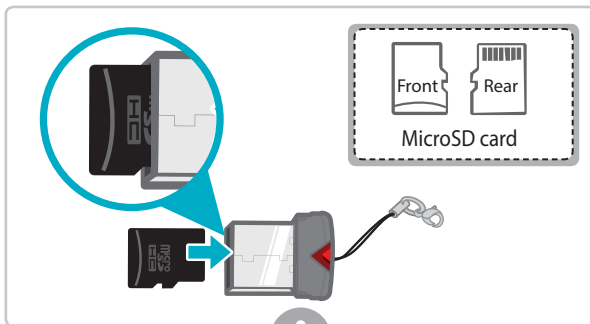
# 4. PC Viewer Software

## 4-1. Thinkware Dash Cam PC Viewer

Thinkware Dash Cam PC Viewer for Windows/MacOS is provided which can be used to watch videos recorded with the dash cam. The video files recorded by the dash cam are in one minute segments and the PC viewer allows the user to watch these segments in single continuous video.

The setup file for the Thinkware Dash Cam PC Viewer is included in the MicroSD card within the package. Please check THINKWARE homepage([www.thinkware.com](http://www.thinkware.com)) for the latest Dash Cam PC Viewer application.

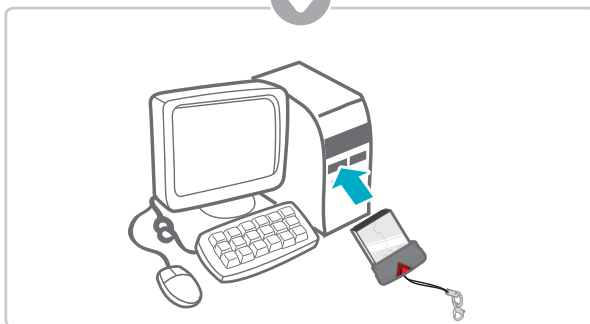
### 4-1-1. Thinkware Dash Cam PC Viewer Software



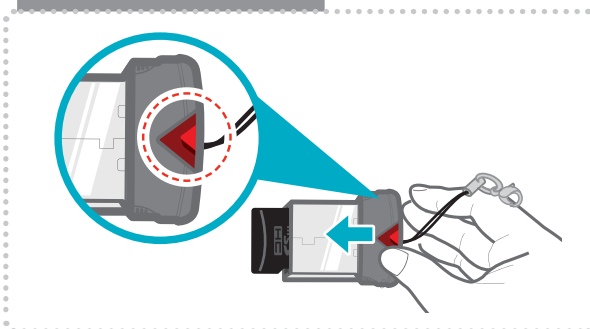
① Insert the MicroSD card into the USB MicroSD card reader (included in the package) with front side facing up as shown in the illustration.

② Connect the USB MicroSD card reader to the PC.

**Ensure that the USB card reader is correctly oriented when inserting it into the USB drive**



#### Removing MicroSD card



## 4-1-2. Installing Thinkware Dash Cam PC Viewer

### Windows



① Double-click the Thinkware Dash Cam PC Viewer setup file saved in the MicroSD card to initiate program installation.

② Double-click the application icon once PC Viewer installation completes and the application main screen will then appear.

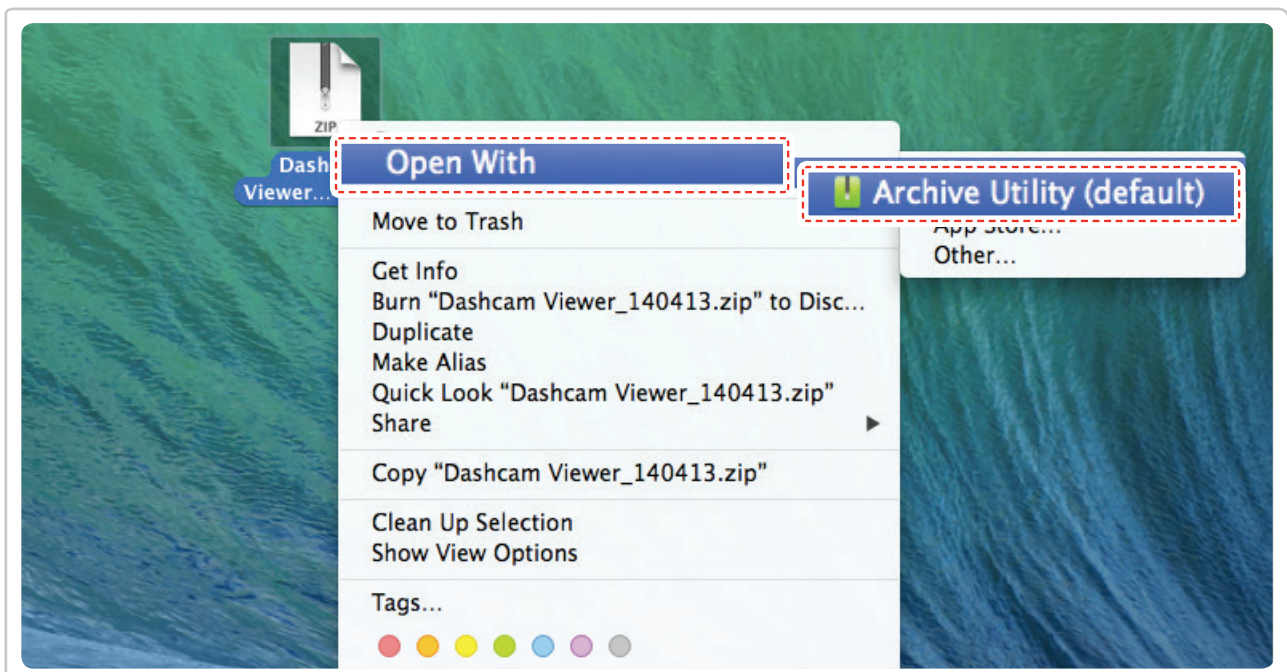
#### Cautions

- System requirements : Windows XP SP3 (32bit), Windows 7 (32/64bit), Windows 8.x (32/64bit)

### MAC

① Move the file named "Dashcam Viewer.zip" stored in the MicroSD card to the desktop.

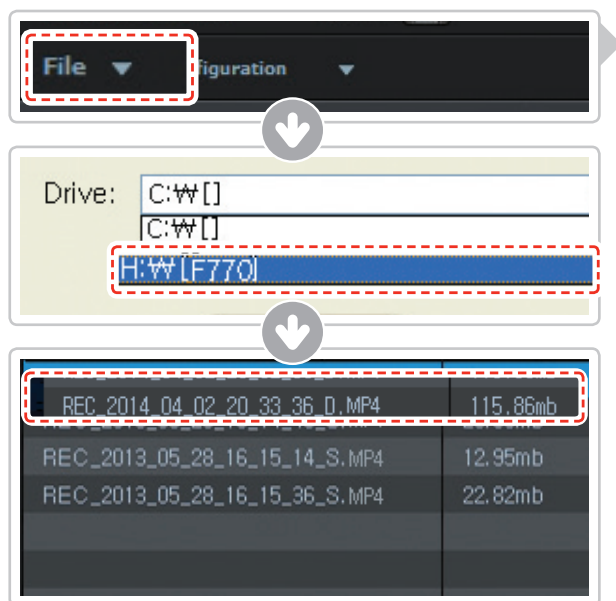
② Right click on the mouse and select "Open With" > "Archive Utility" to launch the Thinkware Dash cam PC viewer application.



#### Cautions

- System requirements : MAC OS X 10.8 Mountain Lion or later (OS X 10.9 Mavericks, OS X 10.10 Yosemite)

### 4-1-3. Select the Device Drive for FA700



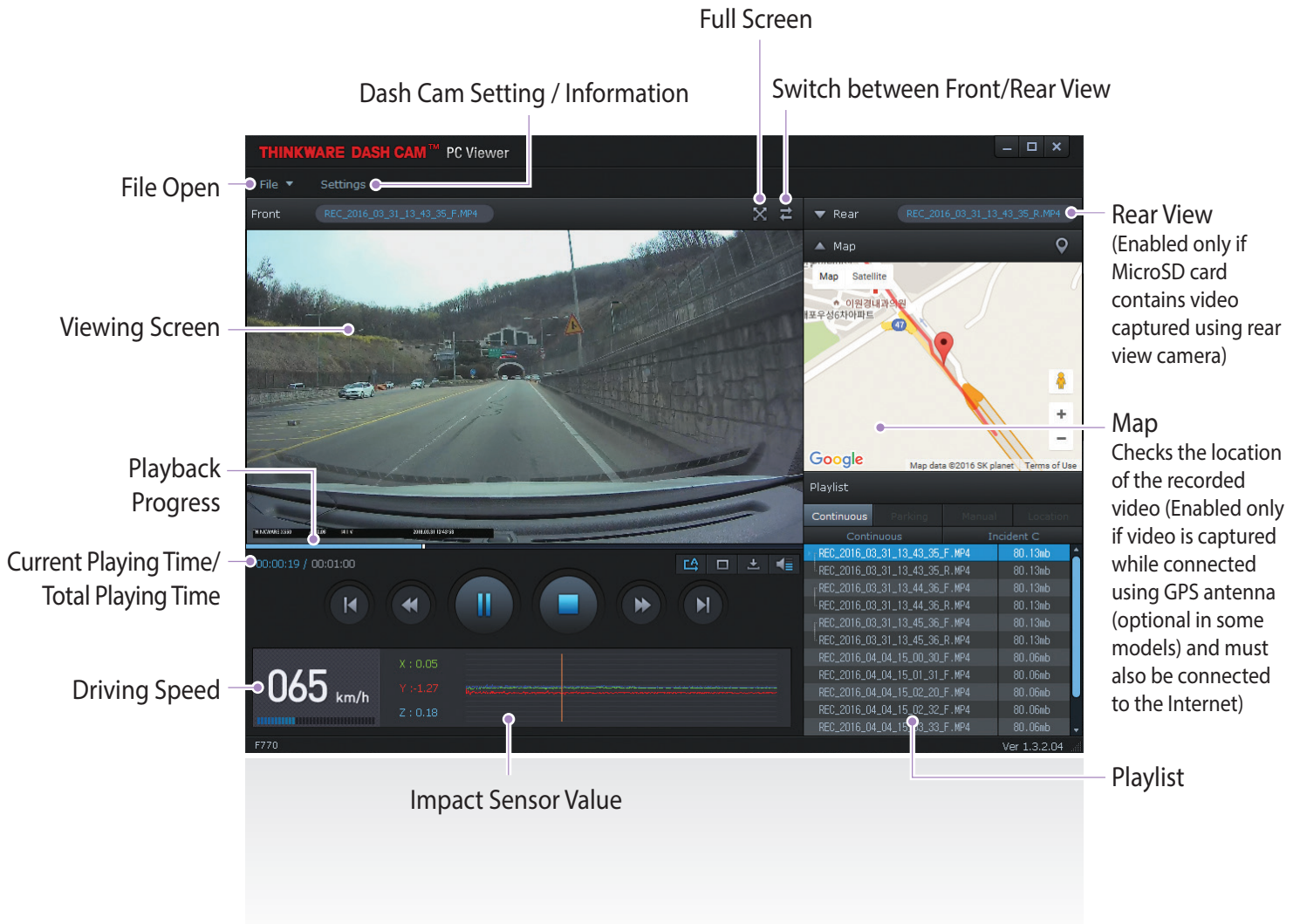
① Click **File** ▼ from menu and select the drive for the portable storage drive for the connected MicroSD card.

② Select any file from the list to load entire video playlist in the memory card.

#### **Cautions**

- The MicroSD card will not be recognized by the software until it has been initialized in the dash cam.
- It is recommended that the user record at least one video clip on the MicroSD card with the dash cam unit before accessing the Thinkware Dash Cam PC Viewer.

## 4-1-4. Thinkware Dash Cam PC Viewer Overview



No.	Name	Description
⏪	<b>Play Previous</b>	Plays the previous file before the current file
⏮	<b>Rewind by 10 Sec</b>	Rewinds the current file being played by 10 seconds (If selected, it continues to rewind by 10 seconds)
▶/⏸	<b>Play/Pause</b>	Plays the recorded file / temporarily pauses playback
■	<b>Stop</b>	Stops the file being played. The playback status resets to the starting point of the video.
⏭	<b>Fast-forward by 10 Sec</b>	Fast-forwards the current file being played by 10 seconds (If selected, it continues to fast-forward by 10 seconds)
⏩	<b>Play Next</b>	Plays the next file after the current file
🔄	<b>Auto Play</b>	Automatically loops the video back to beginning once the end has reached
🖥	<b>Zoom</b>	Sets the video expansion ratio (0.5x / 1.0x / 1.5x / 2.0x)
⚙	<b>Screen Setting</b>	Sets brightness/speed of the video
⬇	<b>Save</b>	Saves the video in play
🔊	<b>Volume</b>	Sets the volume of the playback

## 4-1-5. View Video Playlist

- ▶ Select appropriate folder (Continuous Recording, Incident Recording, Manual Recording, Parking Motion, Parking Incident) to see the playlist for each recording mode.



Continuous	Parking	Manual	Location
Continuous		Incident C	
REC_2016_03_31_13_43_35_F.MP4		80.13mb	
REC_2016_03_31_13_43_35_R.MP4		80.13mb	
REC_2016_03_31_13_44_36_F.MP4		80.13mb	
REC_2016_03_31_13_44_36_R.MP4		80.13mb	
REC_2016_03_31_13_45_36_F.MP4		80.13mb	
REC_2016_03_31_13_45_36_R.MP4		80.13mb	
REC_2016_04_04_15_00_30_F.MP4		80.06mb	
REC_2016_04_04_15_01_31_F.MP4		80.06mb	
REC_2016_04_04_15_02_32_F.MP4		80.06mb	

Continuous Recording Playlist

Continuous	Parking	Manual	Location
		File name	File size
		MAN_2016_03_02_06_24_41_F.MP4	40.03mb
		MAN_2016_04_04_07_39_42_F.MP4	40.03mb
		MAN_2016_04_04_07_40_05_F.MP4	60.03mb

Manual Recording Playlist

# 5. Device Information

## 5-1. Specifications

The specifications of this product may change without prior notice for product improvements.

Item	Standard	Note
Model	FA700	
Size/weight	110 x 60.41 x 31.75 mm / 131g 4.33 x 2.37 x 1.25 inches / 0.28lbs	
Capacity	MicroSD card (UHS-I)	16/32/64GB
Recording mode	Continuous Recording Mode	Records in 1 minute segment
	Incident Recording Mode	
	Manual Recording Mode	
	Parking Surveillance Mode	Optional hardwiring cable and installation are required for continuous supply of power when vehicle ignition is off.
	Audio Recording	Press Voice Recording Button to turn the audio recording on or off
Camera	2.19 Megapixel, 1/2.9" CMOS	Same for rear camera
Viewing angle	Approximately 140° (diagonally)	Same for rear camera
Video	Full HD (1920 x 1080/H.264/extension MP4)	Same for rear camera
Frame rate	1 channel (Front view) : up to 30 fps	Same for rear camera
Audio	PCM (Pulse code modulation)	
Acceleration sensor	3-axis acceleration sensor (3D, ±3G)	Adjustable impact sensitivity (5 levels)
Rear camera	Support V-IN port	Optional accessory that requires separate purchase.
GPS	Embedded GPS	Supports Road safety Warning System (ADAS)
Input power source	DC 12/24V	Rear view camera: 3.3V DC
Current consumption	2CH: 3.5W/1CH: 2.5W (mean)	Based on fully charged super capacitor
Auxiliary power unit	Super Capacitor	
Security LED	Panoramic white LED	
Notification LED	3-color LED	2 rear LEDs
Hardware status notification LED	Wi-Fi receiver, GPS receiver, operation status	2 rear LEDs
Warning sound	Embedded speaker	Voice (buzzer sound) guidance
Operation/Storage Temperature	-10°C to 60°C/ -20°C to 70°C 14°F to 140°F/ -4°F to 158°F	
Connection Interface	1 x V-IN port	