



**PREMIUM**

*Experience More!*

# USER'S MANUAL

**Mabuhaywireless**

**TKM-360P**

[www.wowvideoke.com](http://www.wowvideoke.com)

WOW! and WOW! Videoke are trademarks owned by In-A-Jifty Enterprises. © All rights reserved.  
The use of the said trademark in this product by RealSound Corporation is upon the express conformity of IAJE.



## Table of Contents

Quick Guide .....	3-5
- HOT KEY	
- Channel Setting	
Introduction .....	6
How to take care of your WOW Videoke Premium .....	7-8
Package Contents / Optional Items .....	8
Nomenclature .....	9-13
- Main Player	
- Remocon	
- Microphone	
How to operate the WOW Videoke Premium .....	14
- Power On/Off	
- Installation of song pack	
Installation Guide .....	15-17
- Connecting the microphone to the WOW Videoke Premium	
- Connecting the WOW Videoke Premium to the TV	
- Connecting the WOW Videoke Premium to other Sound Systems	
Additional Menu Function & Configuration Settings .....	18-20
- Search Menu	
- Favorite Menu	
- Record Menu	
- Configuration Menu	
SD CARD .....	20
ENCODER .....	21-27
MUSIC NOTE .....	28
USB Function .....	29-30
- PC connection	
- Using your photos as background image	
Troubleshooting Guide .....	31
Q&A - Other .....	32
Product Specification .....	33

## Quick Guide

### HOT KEY

#### **RANDOM**


1. Random play once: Press , 

2. Random play repeatedly: Press , 

#### **FAVORITE SONG PLAY**

: Press , 

#### **RECORDING**

(In the song list) Press 

#### **HANDCLAP**

Press ,  (while playing)

Press 

## Quick Guide

### Channel setting

TKM-360P has eight (8) available channels.

Please take note that wireless microphones and main player should be on the same channel.

In case of channel interference (either one or two of the microphones cannot be detected by the main player), Please follow the step by step instruction below for re-channeling.

#### **Step1) Main player (receiver) Change by using remote control (point the remote control to the main player)**



- 1) Go to channel select menu :  
[MENU] - [CONFIG] -  
[System Setup] + choose [Version]



- 2) Press [Cancel] button.



- 3) Please take note of the firmware version that will appear on your screen.  
On the first line, it will show the version and the channel.
- 4) Please input the channel number among 1 to 8.  
(In case of interference, please change the channel from the present setting)
- 5) Press [power off] - [Power on] to save.

## Quick Guide

**Step2) Wireless Microphone (transmitter)**  
*Change by using remote control (point the remote control to the MIC sensor near the switch of the microphone)*



- 1) Turn on the Microphone.
- 2) Press [REC] - Microphone LED will blink once.
- 3) Press [MENU] button - Microphone LED will turn off.
- 4) Please input the channel number among 1 to 8.  
(input same number which you input in main player) -  
Microphone LED will blink once.
- 5) Press [CANCEL] button to save → Microphone LED will blink 6 times.

**Step3) Second (optional item) Wireless Microphone (transmitter)**  
*Change by using remote control (point the remote control to the MIC sensor near the switch of the microphone)*



- 1) Turn on the Microphone.
- 2) Press [REC] - Microphone LED will blink once.
- 3) Press [MENU] button - Microphone LED will turn off.
- 4) Please input the channel number among 1 to 8.  
(input same number which you input in main player) -  
Microphone LED will blink once.
- 5) Press [START] button to save → Microphone LED will blink 6 times.









### Introduction

Thank you for purchasing the WOW Videoke Premium.

- The WOW Videoke Premium provides various kinds of Moving Picture Background. (Nature, 3D, MTV, K-POP Video)
- The WOW Videoke Premium provides additional built-in memory space of 64MB, so you can either record songs save pictures to use as background image.
- This product plays five types of music content:
  - MIDI (Musical Instrument Digital Interface) music is music produced through a synthesizer to generate all the sounds of all instruments for a specific song. MIDI music is typical karaoke music. It rarely uses vocals.
  - WOW Videoke Premium is a specially modified MP3 music for karaoke use developed by TJ Media. It is real orchestra music that lets you experience videoke singing with back up singers, second voice, orchestra accompaniment such as real string instruments.
  - Multiplex is songs with vocals.
  - Chorus is a group of persons singing in unison.
  - MTV is original music video with original singer's voice.
- The remote control included in the package makes this product more convenient to use.
- The alphanumeric keypads of the remote control make it easy for you to find your favorite songs even if you remember only the song title or the first name of the artist.
- The WOW Videoke Premium has the capability to reserve up to 30 songs.
- The WOW Videoke Premium has a Favorite Songs function that saves your favorite songs even after the unit is turned off. Any song included in this list is automatically saved.

### Icons and Symbols

-  - indicates that the song playing is WOW Videoke Premium.
-  - appears before the song if the song is in your favorites folder see "Favorite Menu".
-  - this means that you have set the playing mode to repeat all the songs. Refer to "Repeat Menu" for more information.
-  - indicates that the song playing is MULTIPLEX.
-  - indicates that the song playing is CHORUS.
-  - indicates that the song playing is MTV.



**How to take care of your WOW Videoke Premium**

1. Do not attempt to open the WOW Videoke Premium. This will void the warranty.
2. Use only the adaptor included with your WOW Videoke Premium. Using other adaptors could cause serious damage to this device and thereby void the warranty.
3. Do not forcefully pull the microphone cable from the WOW Videoke Premium microphone. See "Connecting the microphone to the WOW Videoke Premium" for the proper procedure in removing the microphone cable from the WOW Videoke Premium microphone.
4. Do not cover the product or any of its accessories while the WOW Videoke Premium is turned on. Always allow air to move freely around the WOW Videoke Premium and the microphone in order to prevent overheating.
5. Avoid bending or twisting the cord.
6. Do not place heavy or sharp objects on top of the cable to prevent punctures or cuts.
7. Do not put this device near an object containing water (such as a vase) to avoid damage or electric shock. In case water or any liquid substance enters the unit, immediately unplug the power cord, then bring your WOW Videoke Premium to the nearest dealer or service center to check for damage and for repair, if necessary.
8. Do not place the product on an unstable surface, near flammable substances, under direct sun light, or in a wet and dusty place.
9. In order to prevent malfunctions, do not place the product near devices that generate strong electric & magnetic fields such as transformers, mobile phones, back portion of TV's, etc.
10. Make all the necessary connections before powering up the WOW Videoke Premium.
11. Make sure to place the batteries of the remote control in the correct polarity to prevent possible damage to the remote control.



### Maintenance & Cleaning of your WOW Videoke Premium

1. During thunderstorms, do not use the product and unplug the adaptor from the wall socket.
2. If you will not use the product for a long time, unplug the adaptor.
3. Do not use strong solvents (such as alcohol/benzene/thinner) to clean the product. This could damage the product's paint work; use only cloth dampened with water and mild detergent.
4. Before cleaning or moving the device, unplug the adaptor.

### Package Contents

Your WOW Videoke Premium is packaged with following items:



### Optional Items

- Songpack : You can buy additional song packs to add to the built-in song selection of your WOW Videoke Premium.  
An additional song packs will allow you to sing with your loved ones and friends.
- Wireless MIC : You can add one more wireless microphone.  
Total 3 MIC(2 wireless, 1 wired) are supported in TKM-360P.
- MIC stand : You can display both wireless MIC and wired MIC with MIC stand.







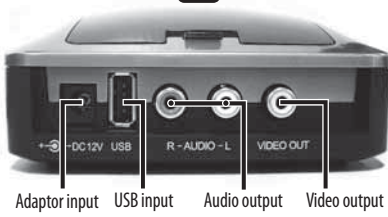
**Nomenclature**



**FRONT**



**REAR**

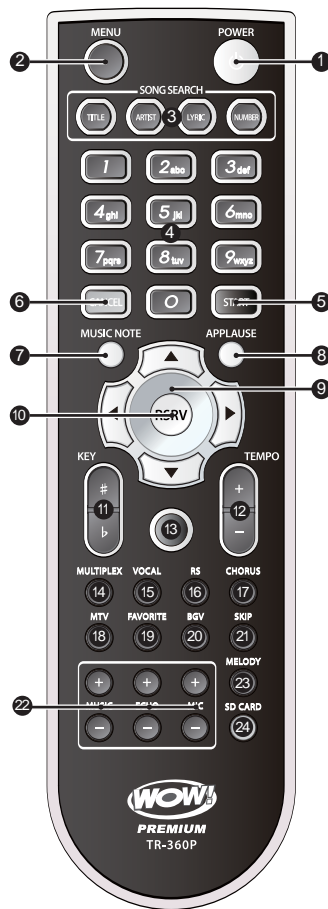


**SIDE**





**Nomenclature (Remote Control)**





### Nomenclature (Remote Control)

NO	FUNCTION	SUBSTANCES
1	POWER	Power On/ Off.
2	MENU	Detail Functions.
3	SONG SEARCH	Song search by Title, Artist, Lyrics, Number.
4	NUMBER	NUMBER.
5	START	START.
6	CANCEL	CANCEL.
7	MUSIC NOTE	Select the music note display on/off.
8	APPLAUSE	Create a mood with applause effect.
9		Move up, down, left, right in the list or display function.
10	RSRV	Reserve a song to play.
11	KEY	Micro control by single key step from a male or female standard key control speed of playing songs.
12	TEMPO	Control speed of playing songs.
13	REC	Recording.
14	MULTIPLY	Displays the list of Multiplex songs.
15	VOCAL	Vocal Assist - Vocal On - Vocal Off.
16	RS	Displays the list of RealSound songs.
17	CHORUS	Displays the list of Chorus songs.
18	MTV	Displays the list of MTV songs.
19	FAVORITE	Displays the list of Favorite songs.
20	BGV	Select Background video. (Auto Nature 3D M/V MTV User Video User Photo)
21	SKIP	Jump prelude or interlude, a tune, verse of a playing song.
22	MUSIC/ ECHO/ MIC	Control volume of accompaniment, echo and microphone.
23	MELODY	Select volume of melody playing. (None - Low - Middle - High)
24	SD CARD	Select the user video & user MP3.



### Nomenclature (Remote Control)

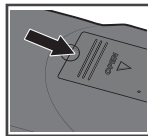
#### **To avoid electric discharge or damage of battery:**

- When putting the batteries in the remote control, check its poles (+/-).
- Make sure that you use AAA size of batteries.
- When changing the batteries, change both batteries at the same time.
- If you will not use the device for a long time, take the batteries out of remote control.

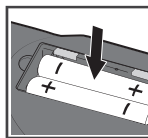
#### **When to change the batteries:**

- If the remote control does not work even within a short distance from the main player, the batteries need to be changed.

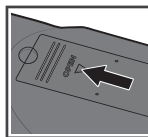
#### **How to change the batteries:**



1. Press the groove and pull up the cover.



2. Insert the batteries correctly.



3. Close the cover.



### Nomenclature (Microphone)

#### **To avoid electric discharge or damage of battery:**

- When putting the batteries in the remote control, check its poles (+/-).
- Make sure that you use AA size of batteries.
- When changing the batteries, change both batteries at the same time.
- If you will not use the device for a long time, take the batteries out of remote control.

#### **When to change the batteries:**

- If the microphone does not work even within a short distance from the main Player, the batteries need to be changed.

#### **How to change the batteries:**



1. Turn in a counter-clockwise direction to open the cover.



2. Insert the batteries correctly.



3. Turn in a clockwise direction to close the cover.



### How to operate the WOW Videoke Premium

#### **Power On/Off**

*Power On-WOW Videoke Premium main unit*

1. Connect the WOW Videoke Premium and all its accessories accordingly.  
Please refer to the Installation Guide.
2. Turn on your TV set and select the AV source where the device is connected.
3. Press {power} on the main unit.

*Power Off-WOW Videoke Premium main unit*

1. Press the power button on either the side of main player or on the remote control for 1 second.
2. Switch off the WOW Videoke Premium microphone first before turning off the main player.



#### **Installation of song pack**

1. Turn off the power of WOW Videoke Premium by pushing the POWER button, until the unit powers off.
2. Open the top cover of the WOW Videoke Premium.
3. Take note of the direction of the song pack. Insert a song pack into the slot and press downward until the song pack is securely in place.  
You can insert song packs regardless of order of slot. Please make sure the direction of the song pack is correct.
4. Turn on the WOW Videoke Premium and key-in a song number from the song pack.  
The songs will be automatically added to the WOW Videoke Premium's song library.  
If you can't see the songs, please check the direction of the song pack, if the song pack is inserted incorrectly repeat the installation process.



### Installation Guide

#### Connecting the microphone to the WOW Videoke Premium



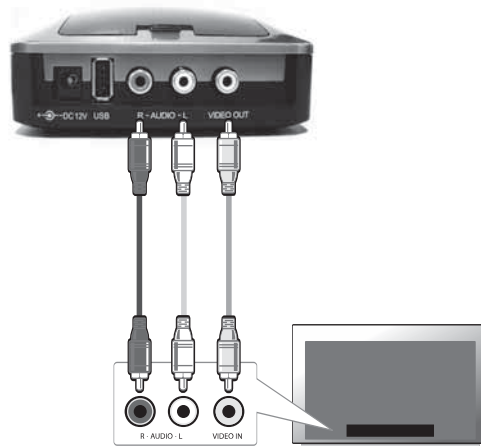
- On the front of the WOW Videoke Premium player, connect the microphone cable to the MIC3.
- Connect the other side of the cable to the bottom of the microphone as shown above.
- When inserting the microphone cable to the WOW Premium microphone, you should hear a clicking sound that indicates that the cable is properly inserted.
- To remove the microphone cable, hold the movable locking mechanism of the microphone cable and gently pull it down.
- You can use an ordinary type of microphone that is impedance 600Ω; simply connect to either MIC3.



### Installation Guide

#### Connecting the WOW Videoke Premium to the TV

<Mainplayer Back View>



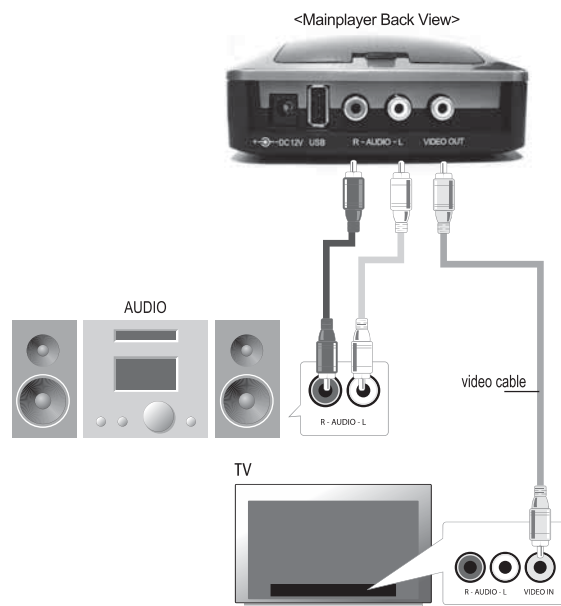
- Connect the **yellow plug** to the video terminal of the main player, and connect the other side of this cable to the video terminal of the TV.
- Connect each of the audio cables (L-white/R-red) to the audio terminal of the main player, and connect the other side of these cables to the audio terminal of TV.
- Adjust your TV setup to external input mode.





### Installation Guide

#### Connecting the WOW Videoke Premium to other Sound Systems



- Connect the yellow plug to the video terminal of the main player, and connect the other side of this cable to the video terminal of the TV.
- Connect each of the audio cables (L-white/R-red) to the audio terminal of the main player, and connect the other side of these cables to an audio device or an amplifier.
- Adjust your TV setup to external video mode and also your audio or amplifier to external audio input (or AUX).
- For the external device connection of TV, audio or amplifier, please refer to the manuals of these devices.



### **Additional Menu Functions & Configuration Settings**

To access menu functions & configuration settings, press {menu}. You can navigate through the menu items by pressing {left/right/up/down}. To enter a menu function, press {START}.

#### **Search Menu**

Please see portion regarding "Search Screen" "Search Function, Song Reservation".

#### **Favorite Menu**

The Favorite Songs list contains user selected songs that are stored in the WOW Videoke Premium's memory. This list is retained even after the WOW Videoke Premium is turned off.



#### **To add songs to the Favorite list:**

- To register your favorite song, select a song search screen and press {menu}.
- A {heart} icon will be added in front of the title, which means the song is in your favorite folder. If you press {menu} again, the {heart} icon will disappear and the song is removed from the favorite folder.

#### **Managing the Favorite List:**

- In your favorite song list, you can sort the songs in terms of the song number, title or Artist. If you want to remove a song in the list, select a song and press {menu}.
- Press {start} to play a song from the Favorite Songs list.
- You can also reserve the songs in your favorite list to cue them to play, just highlight the song and press {RSRV}.
- You can sort your favorite songs by Title, Artist and Number press {FAVORITE} to change the sort mode.
- You can add up to 50 songs in this list from the convenience of the search screen.



### Record Menu

The record function allows the user to record his/her song. Both the instrumentals and the user's voice are recorded and can be played back.



Recorded songs are stored in the WOW Videoke Premium's built-in memory. The user memory is shared by the recorded songs and the user photos. The total memory is 64MB which is equivalent to 60 minutes of recorded songs. 35 minutes is immediately available while the remaining 25 minutes was used for the pre-loaded user photos and TJ media encoder. To maximize the capacity of the user memory you may delete the user photos using the USB function.

### Configuration Menu

The Configuration menu enables you to change some of the settings of the WOW Videoke Premium; like lyrics alignment, difficulty level of the scoring. Here is the list of the default values for each configuration option.

Configuration option	Default Value/Setting	List of Possible Values
Score Check	Amateur	Off, Amateur, Professional
Real time Score	Off	On, Off
Lyric Align	Center	Center, Left & Right, Random
Song Practice	Off	On, Off
Add. Pack Display	On	On, Off
Lyric Shadow	Off	On, Off
Button Sound	Electric	Electric, None
TV Setup	NTSC	NTSC, PAL
Voice Effect	None	None, Robot, Kid
Record/ User Photo	Built-in	Built-in, SD card
System Setup	None	None, Version, Reset

To change any of the configuration options, highlight it by pressing {up/down}, then press {left/right} to change the values until your desired value is displayed. When you're done with the configuration menu, press {cancel}. To exit the menu screen press {cancel} once.



### SD CARD

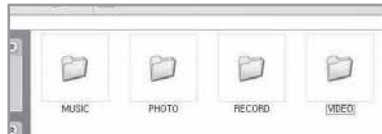
#### **Caution in using SD CARD**

- Please make sure to insert the SD CARD before to power on the main player.
- Do not disconnect the SD CARD from the main player while the device in operation.  
It may cause malfunction of the device or damage on the contents of SD CARD.
- The directories of [MUSIC], [PHOTO], [RECORD], [VIDEO] will be created when you first insert the SD CARD to the main player. In order to enjoy certain contents in the device, you need to locate accordant files in the applicable directories.
- Manufacturer is not responsible for the user's negligence on using SD CARD.

#### **SD CARD manual**

- Procedures  
:TKM-360P Power OFF Insert SDCARD TKM-360P Power ON  
System booting (SD CARD directories created)  
TKM-360P Power OFF  
Disconnect SD CARD and connect to PC by USB cable  
Input data to the newly created directories.

- Created directories



- Directories
  - MUSIC : Space to save USER MP3.
  - PHOTO : Space to save USER PHOTO.
  - RECORD : Space to save recorded songs.
  - VIDEO : Space to save USER VIDEO.
- Caution of locating contents in the SD CARD
  - Please make sure to locate the applicable music and video files to the correspondent directories.
  - You need to convert music and video files to be suitable to the device with the converting program which is "TJ Media Encoder".



## ENCODER

### What is TJ Media Encoder?

TJ Media Encoder is a converting program that provides users to convert their moving pictures or image files to the suitable format for TKM-360P.

### System Requirements

- Operating System : Windows XP, Windows Vista
- Processor : Intel Pentium II or AMD 233MHz up  
(Recommendation: Intel Penuium4 or AMD 866MHz up)
- Memory : 256MB up (Recommendation : 512MB up)
- HDD : Spare capacity of 100MB up (Recommendation : 1GB up)
- Remark : Installation recommendation of  
Windows Media Player 9.0 or upper version.

### Applications

ITEM		File Format
Input Format	Video	MPEG-1, MPEG-2, Windows Media Video(WMV 1/2/3), H.263, H.264, ASF, MPEG-4 (Divx 3/4/5, XviD, MP43, MP42, MPG4, MP4V)
	Audio	MPEG-1 Layer 1/2/3(MP3), AAC, AC3, QCELP, EVRC, AMR-NB, AMR-WB, Windows Media Audio(WMA 1/2/3)
Converting Format	Video	MPEG-4(Divx 5), 720 x 480
	Audio	MP3(44.1KHz, 128Kbps)

### Notice

- Converting disable for the files without videos.
- Converting disable if the file is damaged.
- For Window Media(WMV, ASF) files, we recommend to install Windows Media Player 9 up.
- If the average frame rate of the original file is below 10fps, it may not play properly.
- For converting Windows Media Video(WMV, ASF) files, we recommend to install Windows Media Player 9.0 or upper version.



### TJ Media Encoder Installation

- Connect the TKM-360P with PC using USB cable and turn on the power.
- Directory named "TKM-360P U\_M" will be created.
- Open the "TKM-360P\_M" folder and double click the "TJ Media\_Encoder.exe" to execute installation.



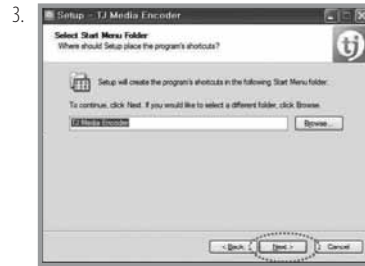
### Installation progress



[ 1. Program Setup Start ]



[ 2. Select Destination Location ]



[ 3.Select Start Menu Folder ]



[ 4.Select Additional Tasks ]



[ 5.Ready to Install ]

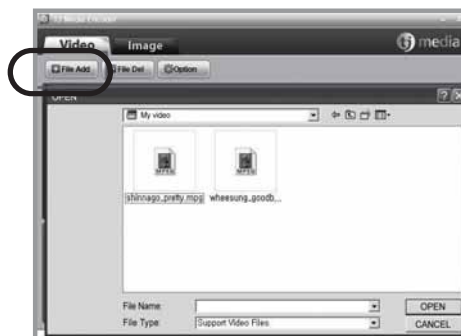
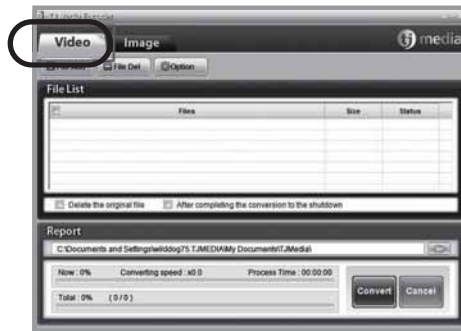


[ 6.Setup Finished ]



### Converting moving pictures

1. Double click the TJ Media Encoder icon  to start the program.
2. Click [Video].
3. Click [File Add] to load a file that you want to convert.

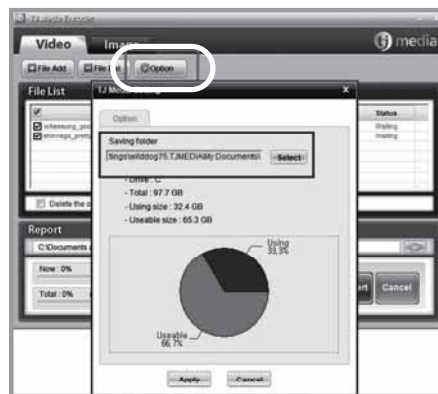






### Converting moving pictures

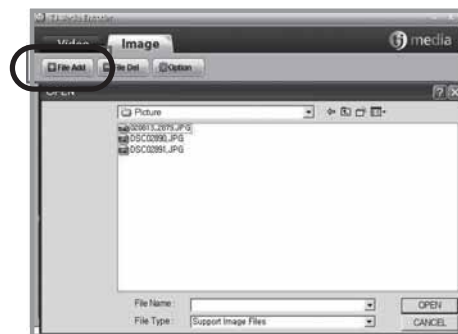
4. Click [Option] if you want the converted files saved as another file name and or in different location.
5. Click [Convert] to execute converting.
6. After converting is finished, you can check the file in the saving folder (Initial saving folder : My Documents TJMedia)





### Converting Image files

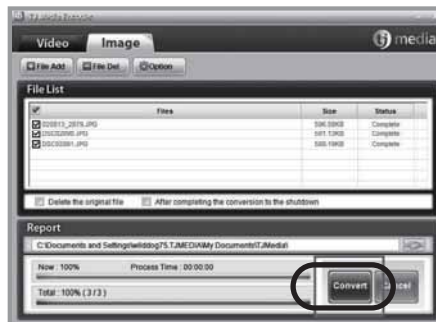
1. Start TJ Media\_Encoder and click [Image].
2. Click [File Add] to load an image file that you want to convert.





### Converting Image files

3. Click [Option] to save as an another file name and or in different location. You can also spin the direction of the image.
4. Click [Convert] to execute converting.



### SD CARD manufactures

1.	SanDisk	1GB, 2GB, 4GB, 8GB
2.	Transcend	
3.	Kingston	
4.	cd-r king	
5.	RiDATA	
6.	KINGMAX	
7.	KingCom	
8.	memorette	
9.	TOSHIBA	
10.	PANASONIC	



### MUSIC NOTE

To display the music note, play a song and press {MUSIC NOTE} button in remote control.



While music note is displaying, you can change lyrics mode by press {music note} button in remote control.



2970 Built-in Songs are available to display the music notes.  
(Medley, Event, MTV, MVP, some MIDI songs are not available music note display)



### **USB Function**

- The WOWVideoke Premium is equipped with a Universal Serial Bus (USB). You can download the recorded songs from the device to your PC, or upload some image files from your PC to the main player.

### **PC connection**

- After turning the main player off, connect the main player to the PC using the USB cable.
- As you turn the main player on, the PC will automatically detect the new hardware.
- Click the window explorer to see if a 'TKM-360P U/M' is detected.
- The WOW Videoke Premium does not include the USB driver or installation software, but it is designed to be connected to any PC that is equipped with Windows XP, 7 O/S.



### **IMPORTANT:**

To disconnect the main player from the PC, close the folders, right-click on the "Safely Remove Hardware" icon on your taskbar, this will open a dialog box. Click the "USB Mass storage/TJ Media" and then click on stop; a dialog box will appear asking for confirmation, click on OK. "Safe to remove hardware" message will appear at the taskbar.



### Using your photos as background image

1. When the main player is connected to your PC, click the Windows Explorer on your PC.
2. And then open the 'PICTURE' folder on a TKM-360P U/M.
3. In the 'PICTURE' folder, save the images or files you want to use as background image. The recommended size of images is 720x480; otherwise the image will not display properly. Please consult your favorite photo editing software for resizing your pictures.
4. Disconnect the WOWVideoke Premium from the PC and turn the main player on.
5. Press "BGV" button to select "USER" and your photos will be shown.
6. The file size of each image should be less than 1MB.
7. You can add approximately 110 images to the main player base on the size of each image is 350KB.





### Troubleshooting Guide

1. The WOW Videoke Premium does not turn on.
  - a. Make sure that the DC output plug of the adaptor is firmly plugged to the unit, and that its AC input plug is likewise firmly plugged into the AC outlet.
  - b. Press the power button.
2. The screen displays video but there is no sound.
  - a. Check if a headphone is connected to the TV or to the amplifier, and if so, disconnect the headphone.
  - b. Increase volume of the TV or the amplifier. Also increase the volume of the WOW Videoke Premium.
  - c. Check if the red and white RCA plugs of the RCA cable are properly plugged in.
3. The screen does not display video.
  - a. Make sure that the RCA plugs are connected to the correct TV input jacks. Make sure also to set the TV to display the correct AV input.
  - b. Check if the yellow RCA plugs are properly plugged to the yellow RCA jacks of the WOW Videoke Premium and the TV.
4. The volume of the MIC is low.
  - a. Press The {+} Button Of the MIC In The Remote Control To Increase The Volume Of the MIC.
5. Real time score is displayed even if there is no person singing on the MIC.
  - a. Real time score is designed to respond even to soft sounds, which includes surrounding noise.
6. The WOW Videoke Premium does not turn off even after turning off the MIC.
  - a. The power switch of the MIC is designed to turn off the MIC. It does not control the power of the main unit.
  - b. Press the power button on the WOW Videoke Premium or the power button on the remote control.
7. Distance of the remote control is short. The remote control does not operate well.
  - a. Check battery of the remote control.
  - b. Is the product being used near a strong light source (direct ray of light or bright electric lights)? Avoid bright light sources as much as possible.
  - c. Remove any obstruction between the remote control and the main unit.
8. The WOW Videoke Premium a does not recognize a Song Pack.
  - a. A song pack must be installed after the main player is turned off. In case the song pack was installed before the unit was turned off, simply turn off the unit and then turn it on again.
  - b. Turn off the unit and firmly reinsert back the song pack into its slot.



### Q&A-Other

1. How do you set the TV mode?
  - Enter the menu then [Config], then enter [TV Set-Up] then select either NTSC or PAL.
  
2. Why does the color of a text title change when singing?
  - When the Song Practice function is turned on, the highlight color of the text changes only from red to blue when you sing correctly into the MIC, otherwise the highlight color remains red.
  
3. How do I adjust TEMP, KEY with a direction key?
  - Press {up} or {down} to increase or decrease the key. Press {right} or {left} to increase or decrease the tempo.
  
4. Is there any other button other than {RSRV} that allows me to select a function from the menu?
  - The {start} button may also be used as a select button instead of the {RSRV}.





### Product Specification

Item		Specs
Audio	Output	2Vrms
	Frequency	20Hz - 20KHz
Adaptor	Input	AC100 - 240V (50-60Hz)
	Output	DC12V, 0.5A ~ 1A
Video	Output	75Ω 1.0Vp-p
Main Station	Input	DC12V, 0.5A~1A
	Consumption(W)	3.5
	Weight (g)	374
	Dimension(WxDxH)	156x116x50

Specifications are subject to change without prior notice for quality improvement.

## **Declaration of Conformity**

Trade Name : TJ media

Model : TKR-320

Responsible Party : TJ media co.,Ltd.

Address : 640-8 Deungchon-dong, Gangseo-gu,  
Seoul 157-030, Korea

Telephone : 82-2-3663-4700

This device complies with part 15 of the FCC Rules.

Operation is subject to the following two conditions:

- (1) this device may not cause harmful interference, and
- (2) this device must accept any interference received, including interference that may cause undesired operation.

### **Notice for customers in the U.S.A.**

Use of TJ media wireless devices is regulated by the Federal Communications Commission as described in Part 74 subpart H of FCC regulations and users authorized thereby are required to obtain an appropriate license.

**IMPORTANT NOTE** : To comply with the FCC RF exposure compliance requirements, no change to the antenna or the device is permitted, Any change to the antenna or the device could result in the device exceeding the RF exposure requirements and void user's authority to operate this device.

This device complies with FCC radiation exposure limits set forth for uncontrolled equipment and meets the FCC radio frequency (RF) Exposure Guidelines in Supplement C to OET65. This device has very low levels of RF energy that it is deemed to comply without testing of specific absorption ratio(SAR).