

TP-LINK®

Archer T1U User Guide

AC450 Wireless Nano USB Adapter

Contents

About This Guide	1
Chapter 1. Get to Know About Your Adapter	2
1.1. Product Overview	3
1.2. LED Status	3
Chapter 2. Connect to a Computer	4
Chapter 3. Windows	6
3.1. Install Driver and Utility	7
3.2. Join a Wireless Network	10
3.2.1. Windows Wireless Utility	10
3.2.2. TP-LINK Utility	11
3.2.3. WPS (Wi-Fi Protected Setup)	13
3.3. Management	16
3.3.1. Status	16
3.3.2. Profile	17
3.3.3. Advanced	20
3.3.4. SoftAP	20
3.3.5. About	22
3.4. Uninstall Driver and Utility	22
Chapter 4. Mac OS X	24
4.1. Install Driver and Utility	25
4.2. Join a Wireless Network	30
4.2.1. TP-LINK Utility	31
4.2.2. WPS (Wi-Fi Protected Setup)	33
4.3. Management	35
4.3.1. Link Status	35
4.3.2. Profile	36
4.4. Uninstall Driver and Utility	39
Chapter 5. Linux	41

About This Guide

This guide is a complement to Quick Installation Guide. The Quick Installation Guide instructs you on quick Internet setup, and this guide provides details of each function and shows you the way to configure these functions appropriate to your needs.

When using this guide, please notice that features of the adapter may vary slightly depending on the model and software version you have. All screenshots, images, parameters and descriptions documented in this guide are used for demonstration only.

Conventions

In this guide, the following conventions are used:

Convention	Description
<i>Blue Italic</i>	Hyperlinks are in blue italic. You can click to redirect to a website or a specific section.
Blue	Contents to be emphasized and texts on the web page are in blue, including the menus, items, buttons, etc.
Note:	Ignoring this type of note might result in a malfunction or damage to the device.
Tips:	Indicates important information that helps you make better use of your device.

More Info

- The latest software and utility can be found at [Download Center](http://www.tp-link.com/support) at <http://www.tp-link.com/support>.
- The Quick Installation Guide (QIG) can be found where you find this guide or inside the package of the product.
- Specifications can be found on the product page at <http://www.tp-link.com>.
- A Technical Support Forum is provided for you to discuss our products at <http://forum.tp-link.com>.
- Our Technical Support contact information can be found at the [Contact Technical Support](http://www.tp-link.com/support) page at <http://www.tp-link.com/support>.

Chapter 1

Get to Know About Your Adapter

This chapter introduces what the adapter can do and shows its appearance.

This chapter contains the following sections:

- *Product Overview*
- *LED Status*

1.1. Product Overview

TP-LINK's Wireless USB Adapter connects your notebook or desktop computer to a wireless network for applications such as lag-free video streaming, online gaming, and secure Internet surfing. And the adapter has following features:

- Supports 802.11ac standard
- Seamlessly compatible with 802.11 a/n/ac products
- Maximum speed of up to 433Mbps for 5GHz network
- Supports ad-hoc and infrastructure mode
- Supports 64/128 WEP, WPA/WPA2, WPA-PSK/WPA2-PSK(TKIP/AES)
- Supports IEEE 802.1x
- Easy Wireless Configuration Utility
- Supports Windows, Mac and Linux

1.2. LED Status



You can check the adapter's working status by following the LED Explanation table.

Status	Indication
Off	The driver has not been installed. The adapter's radio has been disabled.
Flashing Slowly	The driver has been installed but no data is being transmitted or received.
Flashing Quickly	Data is being transmitted or received.

◆ Tips:

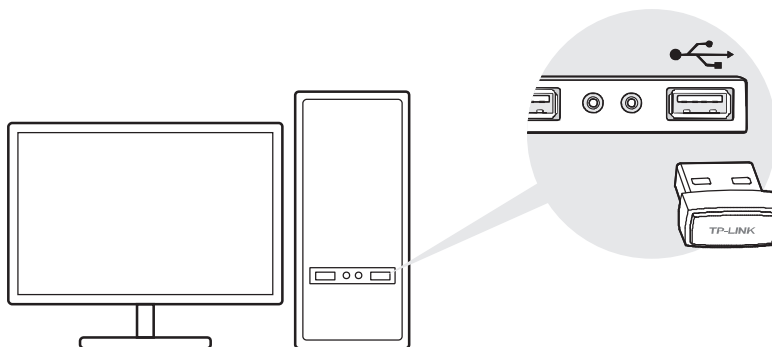
If the LED is off, try these troubleshooting tips:

1. Remove and reinsert the adapter.
2. Insert the adapter in a different USB port on your computer if one is available.
3. For Windows users, check the Windows device manager to see if the adapter is recognized and enabled. Reinstall the adapter software, if necessary.

Chapter 2

Connect to a Computer

Before you begin using your adapter, insert the adapter to a USB port on your computer.



■ **Note:**

In Windows XP, a **Found New Hardware Wizard** window will appear when the adapter is detected. Please click **Cancel**.

After connecting your adapter to the computer, please follow the instructions in the appropriate chapter for your operating system: [Windows](#), [Mac OS X](#), [Linux](#).

Chapter 3

Windows

This chapter introduces how to install your adapter's driver and utility, use your adapter to join a wireless network, manage your adapter, and uninstall your adapter in a Windows system. The adapter is equipped with a Setup wizard, which can guide you through the installation process.

This chapter includes the following sections:

- *Install Driver and Utility*
- *Join a Wireless Network*
- *Management*
- *Uninstall Driver and Utility*

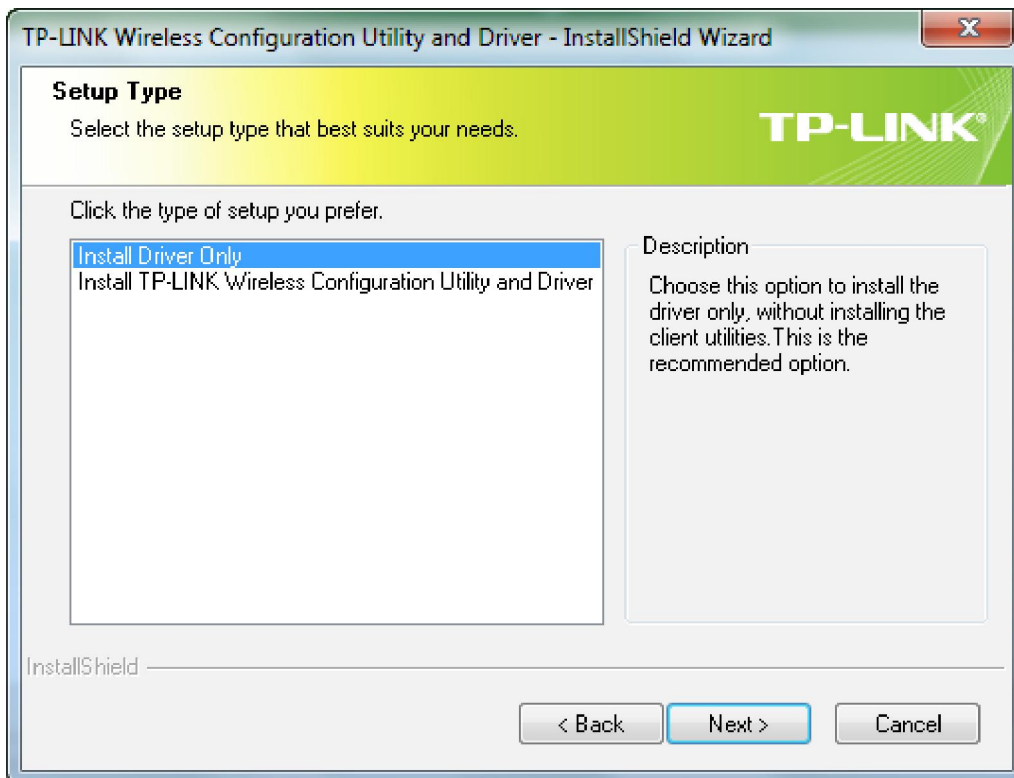
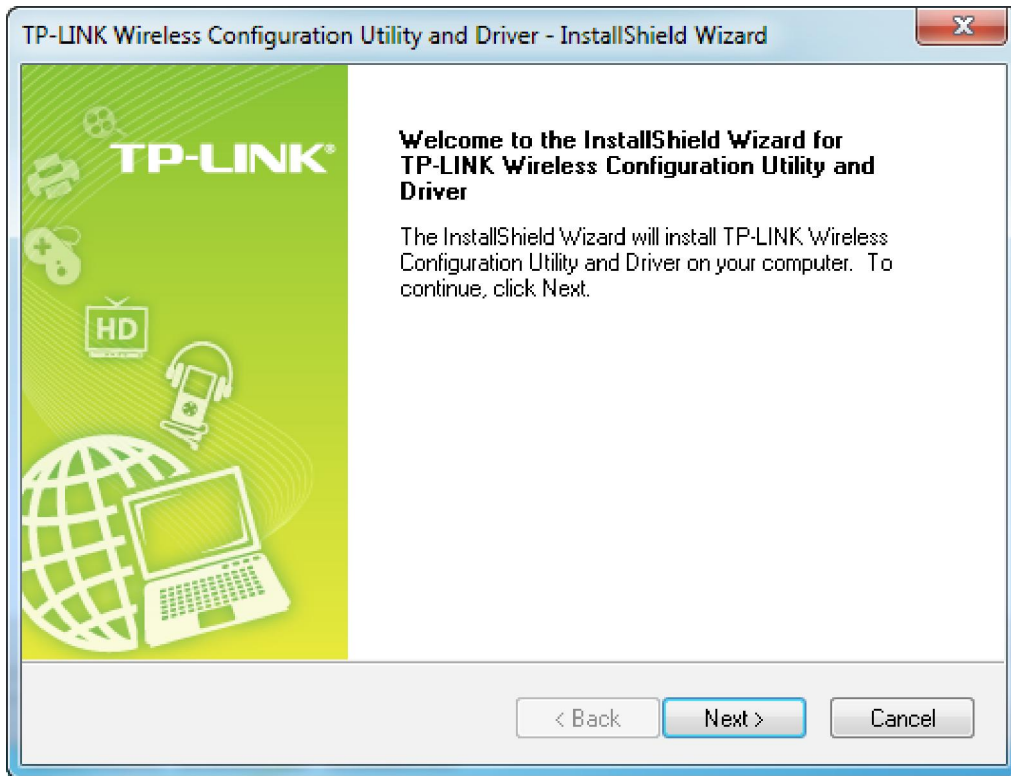
3. 1. Install Driver and Utility

To set up your adapter with several easy steps quickly:

1. Insert the resource CD into your CD drive and run the [Autorun.exe](#) from the pop-up AutoPlay window. Select [Archer T1U](#) and click [Install Driver](#) to begin.

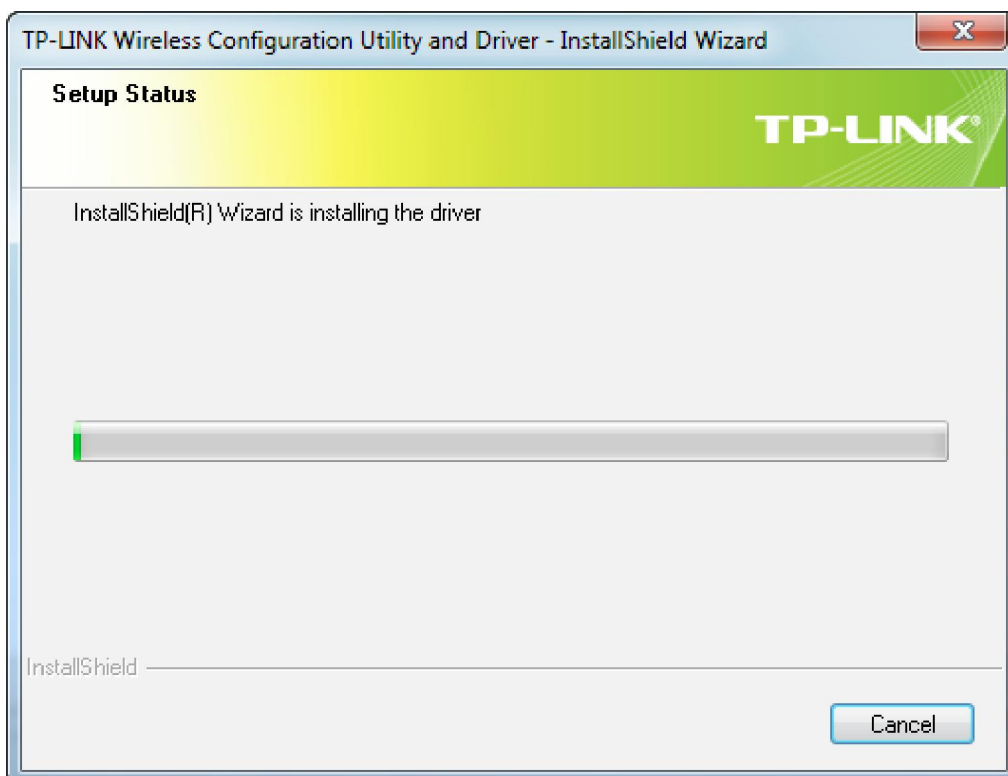
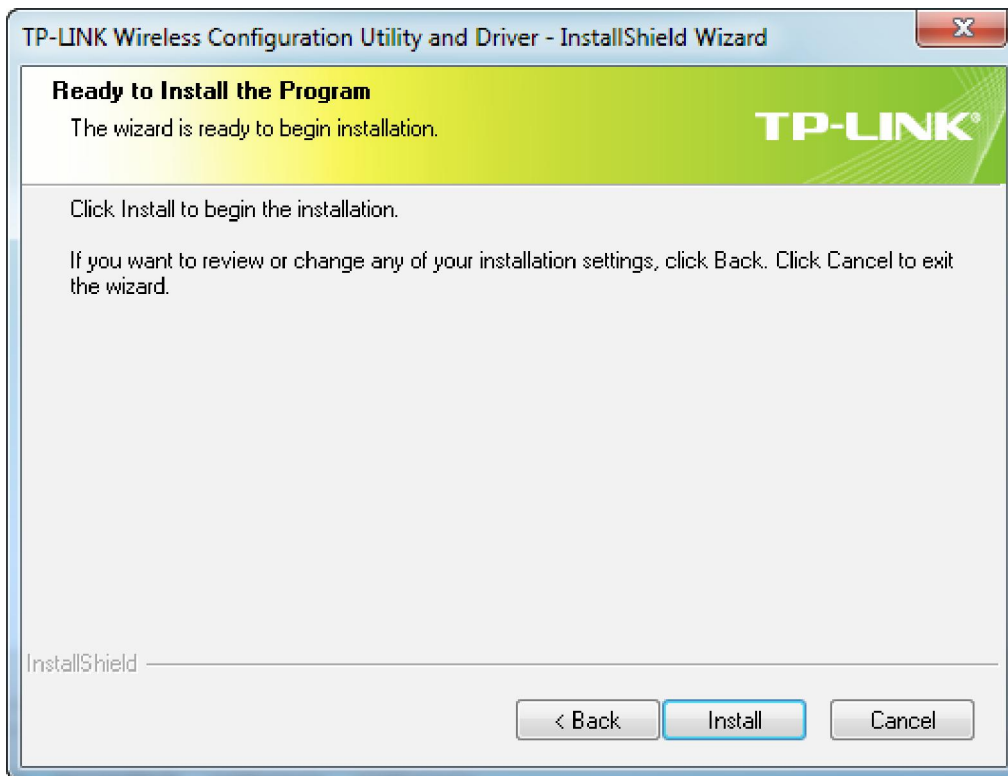


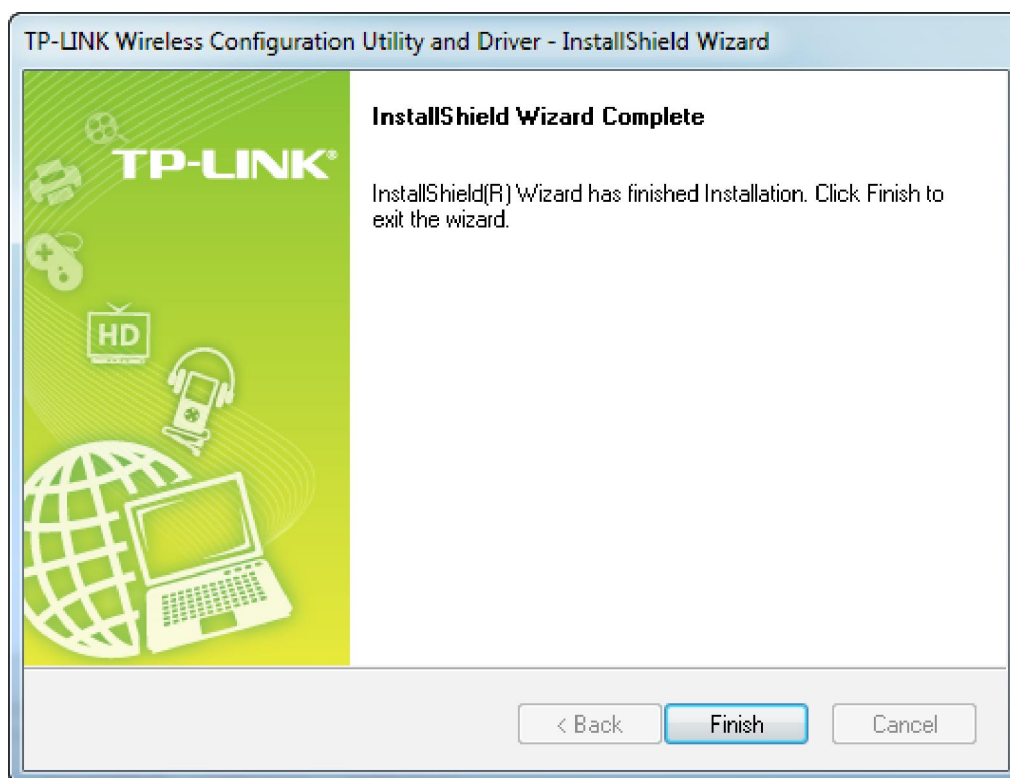
2. Follow the step-by-step instructions of the Quick Setup to complete the initial configuration.



Note:

The default setup type is **Install Driver Only**. You can also select **Install TP-LINK Wireless Configuration Utility and Driver** for more functions, such as joining a wireless network via TP-LINK Utility or WPS, and managing the adapter.





3.2. Join a Wireless Network

You can join a wireless network via Windows built-in Wireless Utility. If you want to use Option 2: TP-LINK Utility or Option 3: WPS (Wi-Fi Protected Setup) to join a wireless network, you need to install the TP-LINK Utility first.

Option 1: *Windows Wireless Utility*

You can use the Windows WLAN Autoconfig service (for Windows 7/8/8.1/10) and the Wireless Zero Configuration service (for Windows XP) to join a Wi-Fi network.

Option 2: *TP-LINK Utility*

TP-LINK Utility lets you easily connect the adapter to a Wi-Fi network and manage the adapter.






Option 3: *WPS (Wi-Fi Protected Setup)*

WPS (Wi-Fi Protected Setup) is a network security standard for easily adding computers and other devices to a home network. Use this method if your wireless router or access point supports WPS.

3.2.1. Windows Wireless Utility

Follow the instructions in the appropriate section below to use your computer system's built-in wireless utility: *Windows 7/8/8.1/10*, *Windows XP*.

- **Windows 7/8/8.1/10**

1. Click ,  or  (Network icon) on the taskbar. Select the Wi-Fi network you want to join, and click **Connect**. Enter the network password when prompted.
2. When the network icon changes to  or , it indicates a successful network connection.


- **Note:**

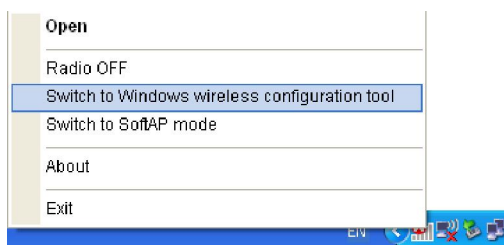
If you do not want to enter the Wi-Fi password, you can also join a wireless network either by pushing the WPS or QSS button on your router or AP, or entering the PIN of your router when the screen prompts you to do so.

- **Windows XP**

1. If you have not installed the TP-LINK Utility, go to step 2.

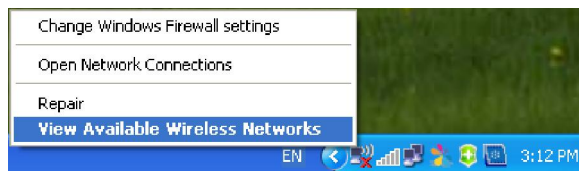
If you have installed the TP-LINK Utility, you need to switch to use the Windows wireless configuration tool manually using one of the following methods.

Method 1: Right-click  (TP-LINK Utility icon) on the taskbar. (If you do not see the icon, click the hidden icons arrow on the taskbar.) Select **Switch to Windows wireless configuration tool**.



Method 2: Open the TP-LINK Utility and select **Advanced** tab. Select **Use Windows wireless configuration tool**. Click **OK** when it prompts.

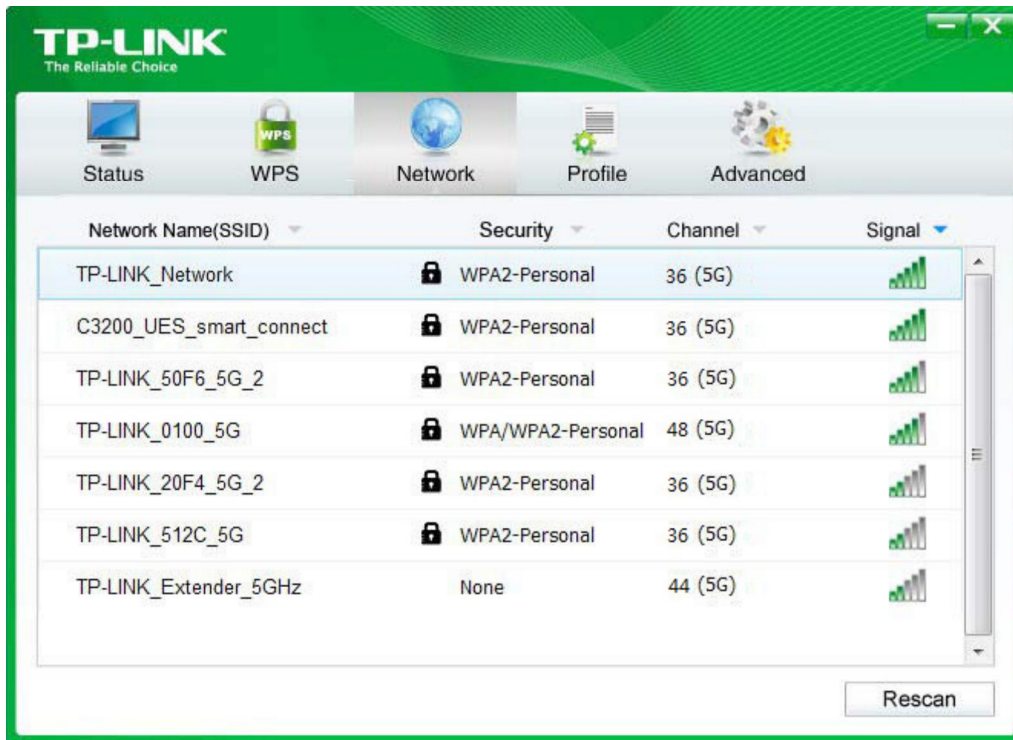
2. Right-click  (Windows XP Wireless Zero Configuration Utility icon) on the task bar, and select **View Available Wireless Networks**.



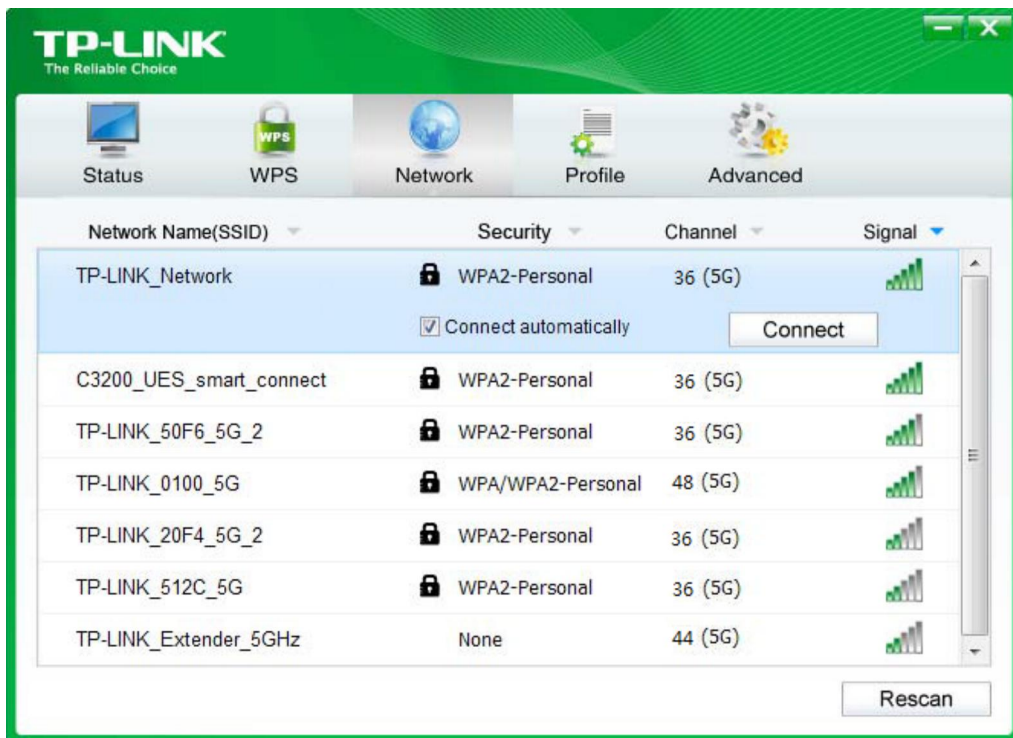
3. Select the network you want to join, and click **Connect**. Enter your Wi-Fi password when prompted.

3.2.2. TP-LINK Utility

1. Open TP-LINK Utility . The Network screen displays.



2. Select the network you want to join from the list on this screen and click **Connect**. If you want the adapter to automatically connect to the network next time, select the **Connect automatically** checkbox. Enter your Wi-Fi password when prompted.



Note:

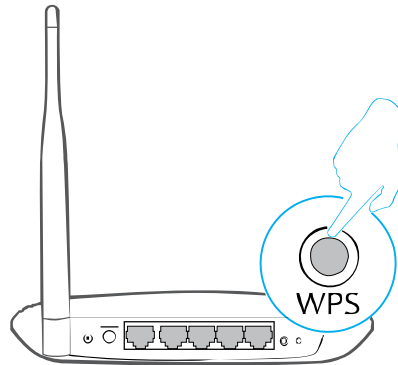
If your Wi-Fi network is not displayed in the list, you can try to join it by WPS or by adding a profile in the Profile screen.

3.2.3. WPS (Wi-Fi Protected Setup)

WPS can be activated via PBC (Push Button Configuration) and PIN code. Please refer to [PBC](#) or [PIN](#) below.

- PBC

1. Press the [WPS/QSS](#) button on your router or AP.



2. Open TP-LINK Utility and click [WPS](#) tab. Select [Push the button on my access point or wireless router](#) and click [Connect](#).



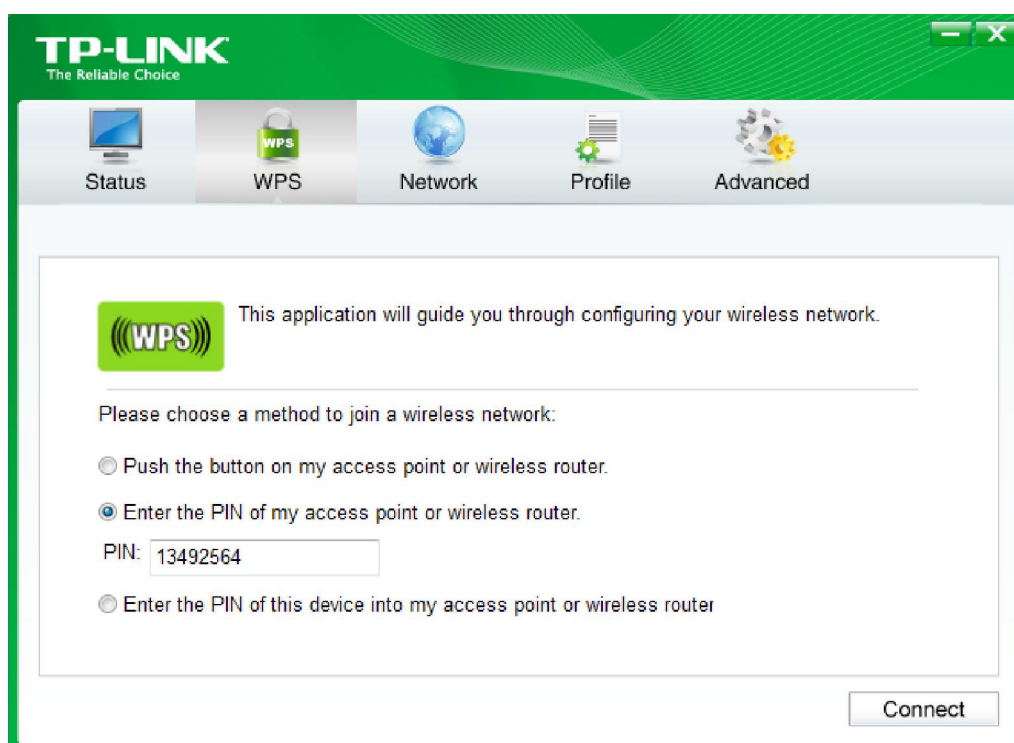
3. The following screen indicates a successful connection by WPS. Click [OK](#).



- PIN

Option 1

1. Open TP-LINK Utility and click **WPS** tab. Select **Enter the PIN of my access point or wireless router**. Enter the PIN of your router or AP. Click **Connect**.



■ **Note:**

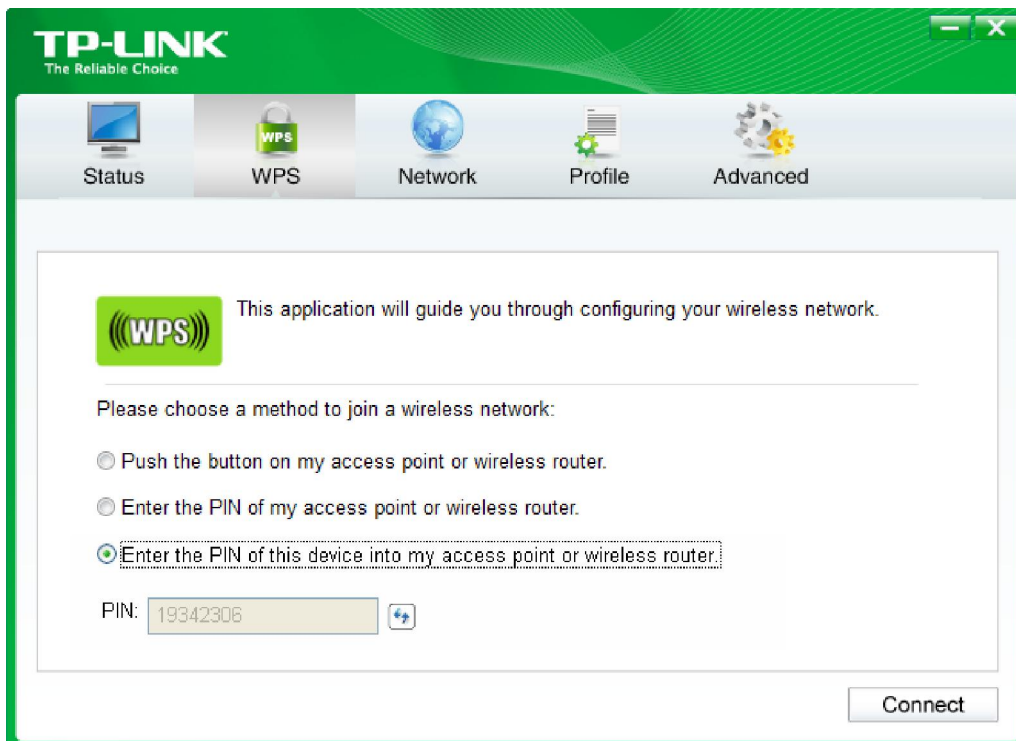
The default PIN of your router or AP is printed on the product label of your router or AP. If you generated a new PIN for your router, please enter the new one.

2. The following screen indicates a successful connection by WPS. Click **OK**.



Option 2

1. Open TP-LINK Utility and click **WPS** tab. Select **Enter the PIN of this device into my access point or wireless router**. The screen displays a PIN of the adapter, which is generated randomly. Click **Connect**.



2. Log in to the Web Management page of your router or AP. Go to the **WPS** page, enter the PIN of the adapter in the corresponding field and click **Connect**.
3. The following screen indicates a successful connection by WPS. Click **OK**.



3.3. Management

TP-LINK Utility provides you with an easy way to manage your adapter. It includes the following sections:

Status - View the information of the current Wi-Fi network connection and of the adapter.

Profile - Save or manage various connection settings of your Wi-Fi network.

Advanced - Turn on or off the SoftAP mode and power saving mode, switch between TP-LINK Utility and Windows Wireless Utility (for Windows XP only).

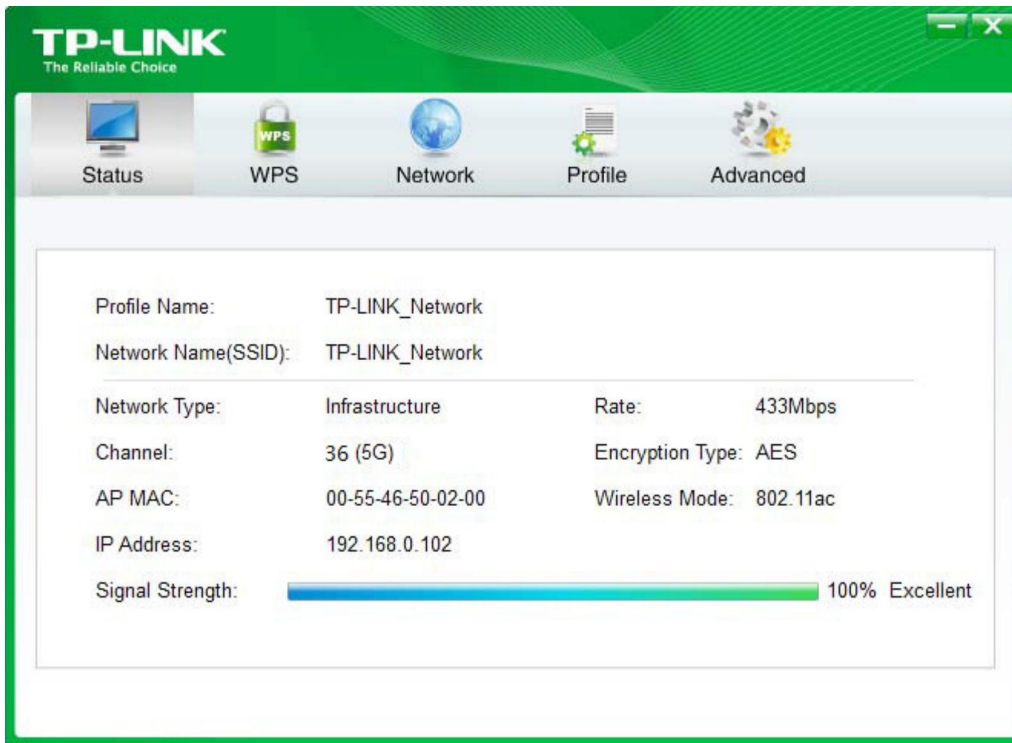
SoftAP - Configure the settings of the network shared by your adapter, and view the IP address of your adapter when it works on SoftAP mode.

About - View your adapter's Utility version and its Driver version.

Open TP-LINK Utility  and click the [Status](#), [Profile](#) or [Advanced](#) tab to manage the corresponding section of your adapter.

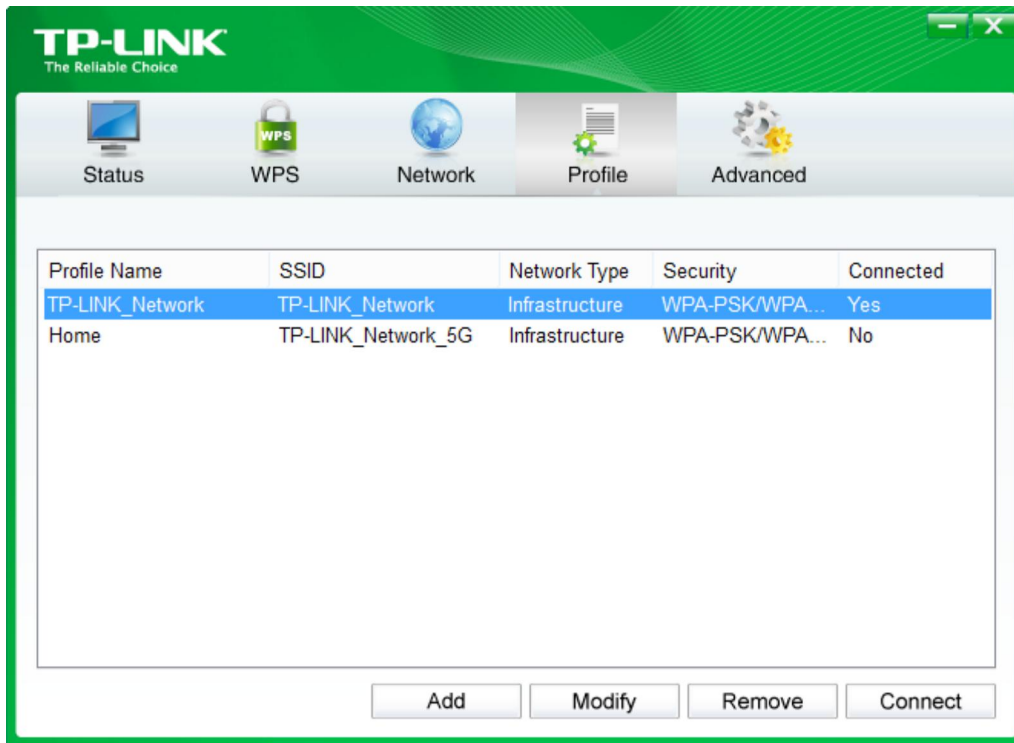
3.3.1. Status

You can view the IP address and MAC address of the adapter, the signal strength of the Wi-Fi network, and other information of the network status as shown in the following figure.



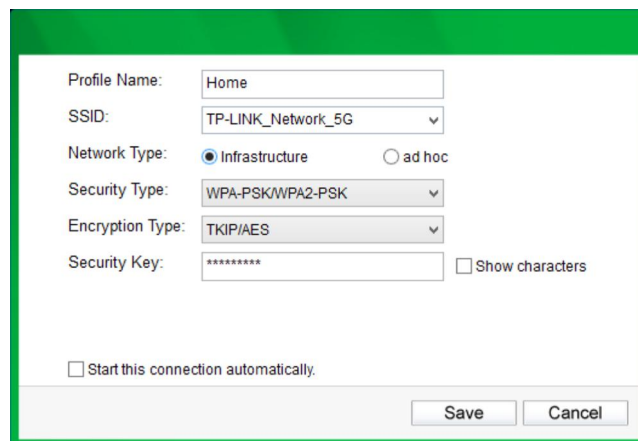
3.3.2. Profile

The Profile screen lets you save and manage different Wi-Fi connection settings as profiles so that you can quickly and simply connect to your network. Moreover, you can join a hidden Wi-Fi network that does not broadcast its SSID by adding a profile, provided that you know its wireless settings, such as SSID, security type, and encryption type. For more details, please refer to the instructions below: To add a new profile, To join a Wi-Fi network, and To manage an existing profile.



- **To add a new profile**

1. Click the **Add** button, and then a new window will open.
2. Complete the settings as shown in the following figure, and click **Save**.



Profile Name: Enter a name for your profile, such as Home, Office, Coffee house. Do not enter the profile name that already exists.

SSID: Select your Wi-Fi network from the drop-down list or enter your Wi-Fi network name manually.

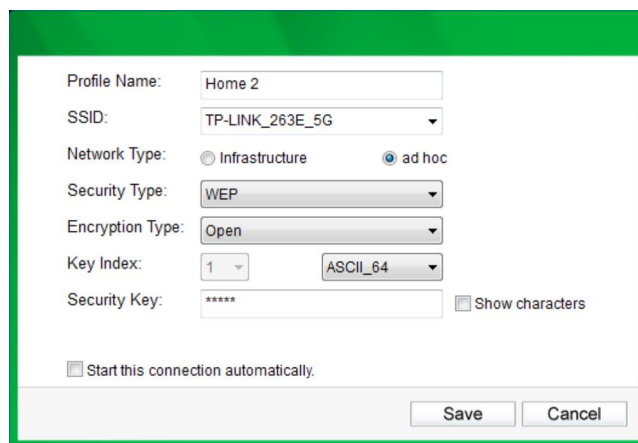
Network Type: Select **Infrastructure** if you want to connect to a wireless router or an access point. Select **ad hoc** if you want to connect to another wireless client, such as an adapter.

Infrastructure:

If you select **Infrastructure**, you are asked to select or enter the corresponding wireless settings, which should be the same as those of your Wi-Fi network.

ad hoc:

If you select **ad hoc**, you are asked to configure the wireless settings for your network, including choosing the security type, the encryption type and setting a security key.



The screenshot shows a Windows Network Setup dialog box with a green border. The fields are as follows:

- Profile Name: Home 2
- SSID: TP-LINK_263E_5G
- Network Type: Infrastructure ad hoc
- Security Type: WEP
- Encryption Type: Open
- Key Index: 1
- Key Format: ASCII_64
- Security Key: *****
- Show characters:
- Start this connection automatically:
- Buttons: Save, Cancel

Note:

As for Key Index, you can select ASCII or Hexadecimal format from the drop-down list.

ASCII_64 - Please enter 5 ASCII characters.

ASCII_128 - Please enter 13 ASCII characters.

Hexadecimal_64 - Please enter 10 Hexadecimal digits (any combination of 0-9, a-f, A-F, excluded space).

Hexadecimal_128 - Please enter 26 Hexadecimal digits (any combination of 0-9, a-f, A-F, excluded space).

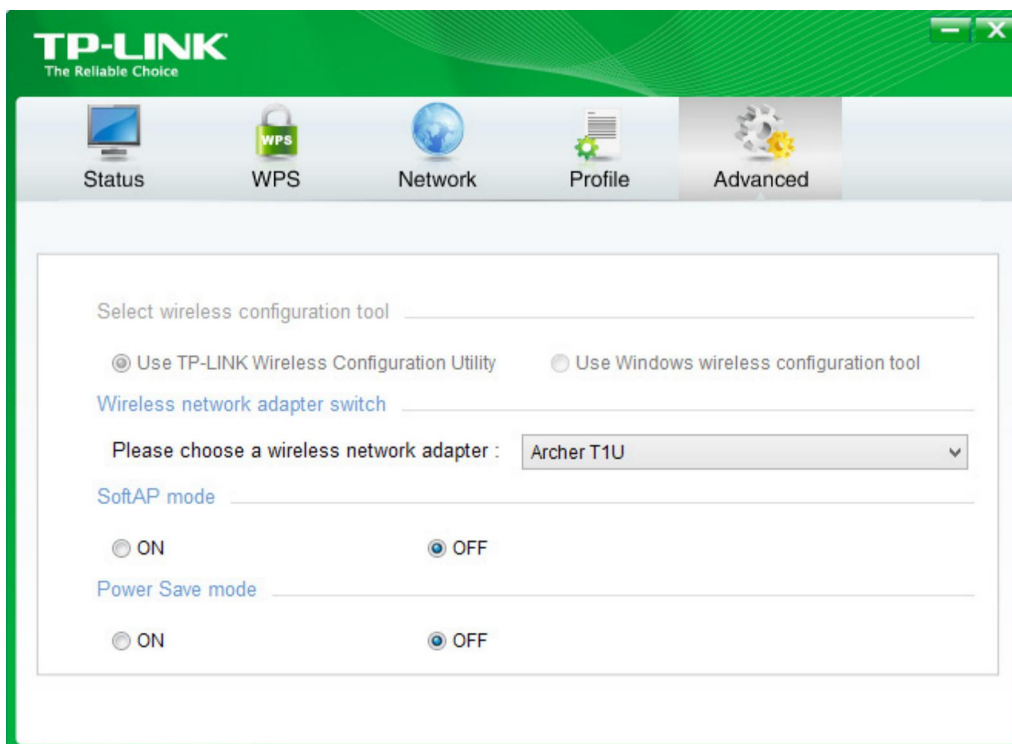
• To join a Wi-Fi network

If you want to join a Wi-Fi network that listed in the profile screen, select the profile and click **Connect** in the bottom right corner.

• To manage an existing profile

If you want to change the name or the wireless settings of an existing profile, select it and click **Modify** of the Profile screen, then you can edit the settings of this profile. If you want to delete a profile that you no longer use, select it and click **Remove**.

3.3.3. Advanced



Select wireless configuration tool: In Windows XP, you can either use TP-LINK Utility or Windows wireless configuration tool. While in other operating systems, since you can use both TP-LINK Utility and Windows wireless configuration tool at the same time, this function is disabled.


Wireless network adapter switch: If you've installed several adapters in your computer, you can switch to another adapter among the drop-down list.

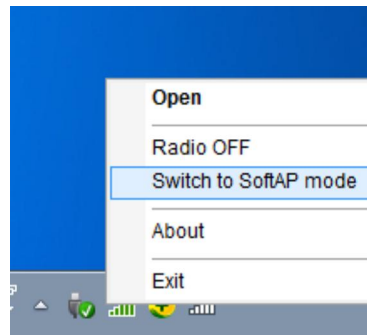
SoftAP mode: Once ON is selected, the adapter will work as an AP.

Power Save mode: Once ON is selected, the adapter will automatically reduce its power consumption when not being used.

3.3.4. SoftAP

SoftAP is short for Software enabled Access Point. When the adapter works in SoftAP mode, it allows the computer to create a wireless hotspot that other wireless devices nearby can use.

To switch to SoftAP mode, right-click the utility icon  on the task bar and select [Switch to SoftAP mode](#).



After switching to SoftAP mode, the SoftAP icon appears in the utility. Click the [SoftAP](#) tab, and complete the settings, then click [Apply](#) for the settings to take effect.



Soft AP mode: Select ON or OFF to enable or disable this function.

Internet Connecting Share(ICS): Select a network connection that can access to the Internet from the drop-down list. For example, if your computer is connecting to the Internet via an Ethernet cable, you should select the corresponding [Local Area Connection](#) so as to share the network with other wireless devices.

SSID: Set a name for the wireless network shared by your adapter. The default is SoftAP.

Security Type: The security type here is set to be WPA2-PSK which is based on 802.11i and uses AES (Advanced Encryption Standard).


Encryption Type: The encryption type here is set to be AES.

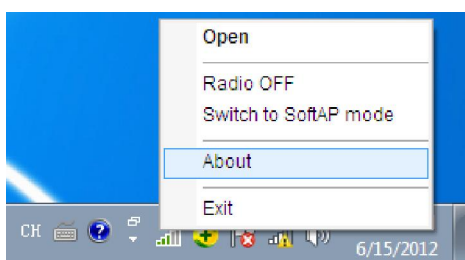
Security Key: Set a security key for the wireless network that shared by your adapter. It is recommended that you specify another key instead of the default key 12345678.

When another wireless device connects to the network shared by your adapter, it will be asked to enter the corresponding security key.

IP Address: Displays the IP address of the adapter when it works in SoftAP mode. You can also check if the network shared by your adapter is working properly by checking this IP Address. For example, if the IP Address is 0.0.0.0, it means that the Internet connection is failed.

3.3.5. About

You can view the adapter's information in the **About** screen, such as the UI version (Utility version) and the Driver version. Right-click  (TP-LINK Utility icon) on the task bar and select **About**, then the About screen displays.



3.4. Uninstall Driver and Utility

The software uninstallation steps vary a bit in different systems, please follow the appropriate instructions for your Windows operating system: [Windows 8/8.1/10](#), [Windows XP/7](#).

• Windows 8/8.1/10

Uninstall driver:

Go to **Start > Apps**, find the TP-LINK application. Click **Uninstall - TP-LINK Archer T1U Driver**, then follow the on-screen instructions to complete the uninstallation.

Uninstall utility:

Go to **Start > Apps**, and find the TP-LINK application. Click **Uninstall - TP-LINK Wireless Configuration Utility**, then follow the on-screen instructions to complete the uninstallation.

• Windows XP/7

Uninstall driver:

Go to **Start > All Programs > TP-LINK > Uninstall - TP-LINK Archer T1U Driver**. Follow the on-screen instructions to complete the uninstallation.

Uninstall utility:

Go to **Start > All Programs > TP-LINK > Uninstall - TP-LINK Wireless Configuration Utility**.
Follow the on-screen instructions to complete the uninstallation.

Chapter 4

Mac OS X

This chapter introduces how to install your adapter's driver and utility, use your adapter to join a wireless network, manage your adapter, and uninstall your adapter in Mac OS X.

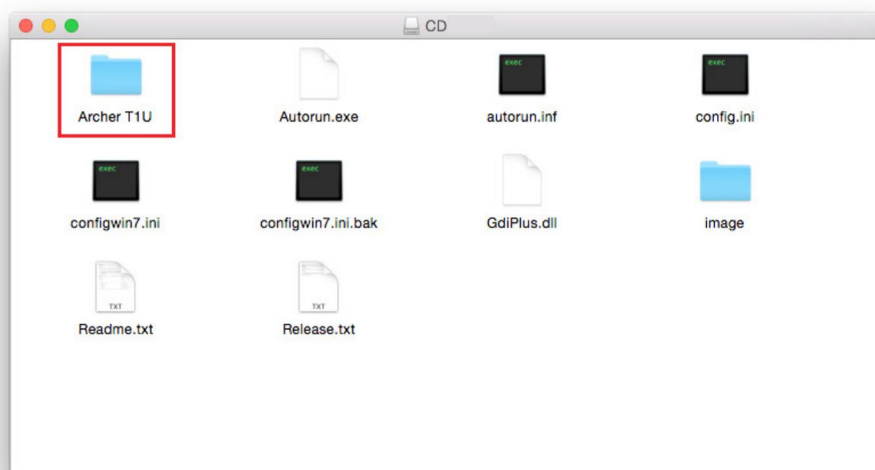
This chapter includes the following sections:

- *Install Driver and Utility*
- *Join a Wireless Network*
- *Management*
- *Uninstall Driver and Utility*

4. 1. Install Driver and Utility

We take the steps in Mac OS X 10.10 as an example - the steps may vary slightly for other versions of Mac OS.

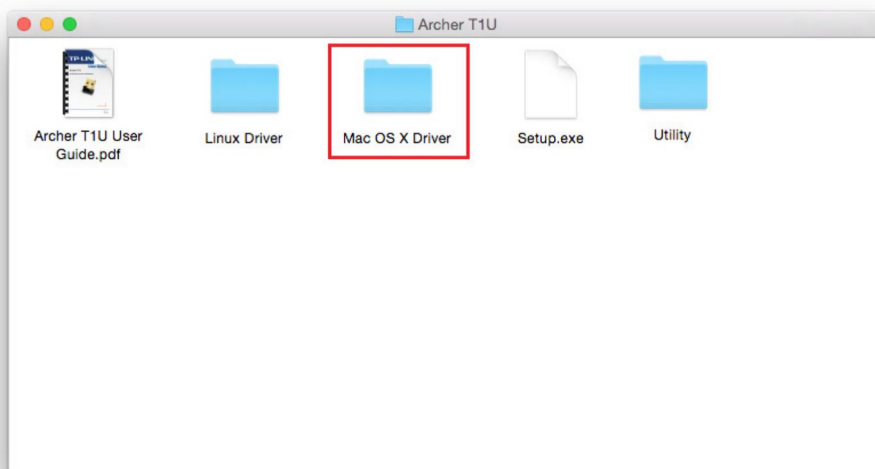
1. Insert the CD and run it manually. Open the **Archer T1U** folder.



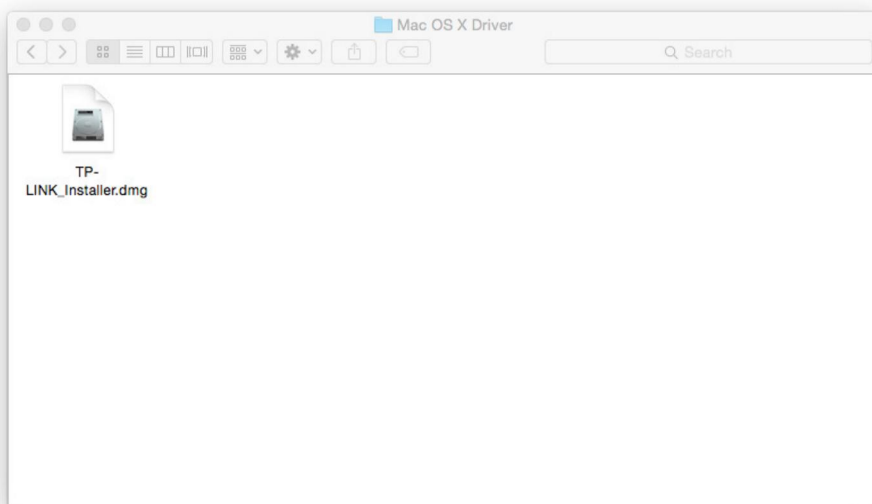
■ **Note:**

The CD is included in the package. If your CD does not work or your computer doesn't support the CD, you can also download the driver and utility from the TP-LINK website (<http://www.tp-link.com>).

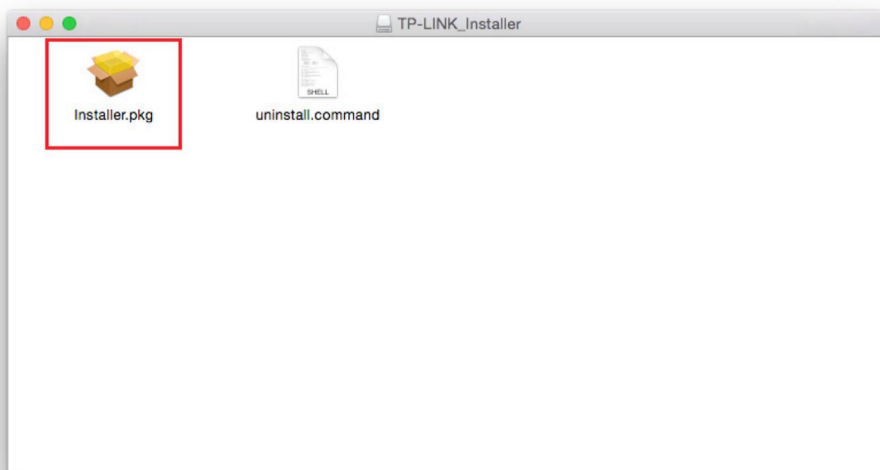
2. Open the **Mac OS X Driver** folder.



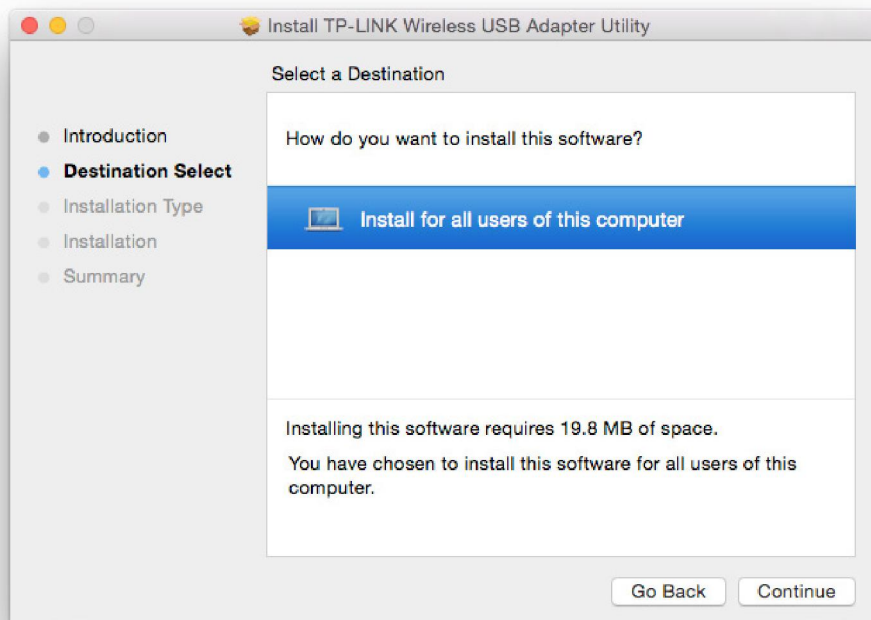
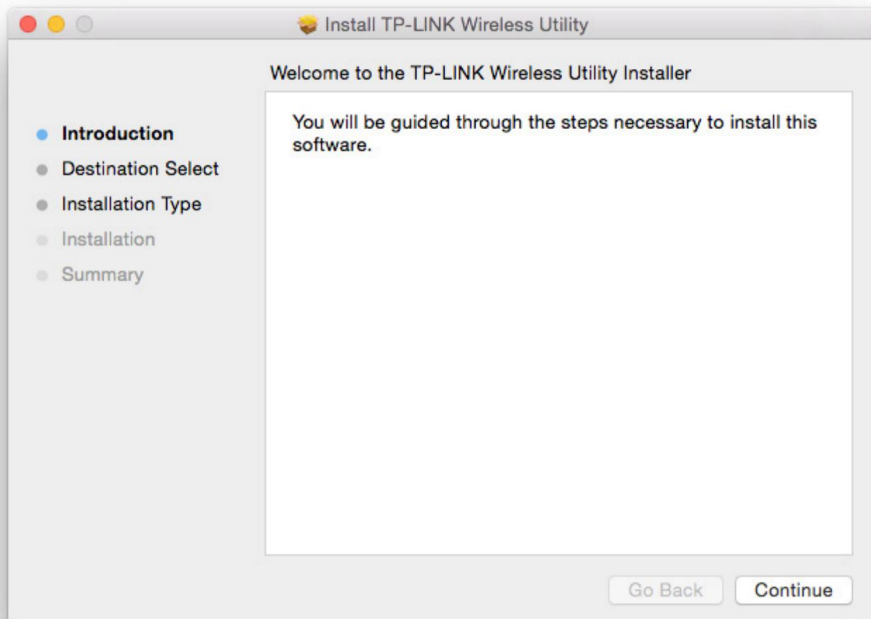
3. Double click the [TP-LINK_Installer.dmg](#) file to open the TP-LINK_Installer.

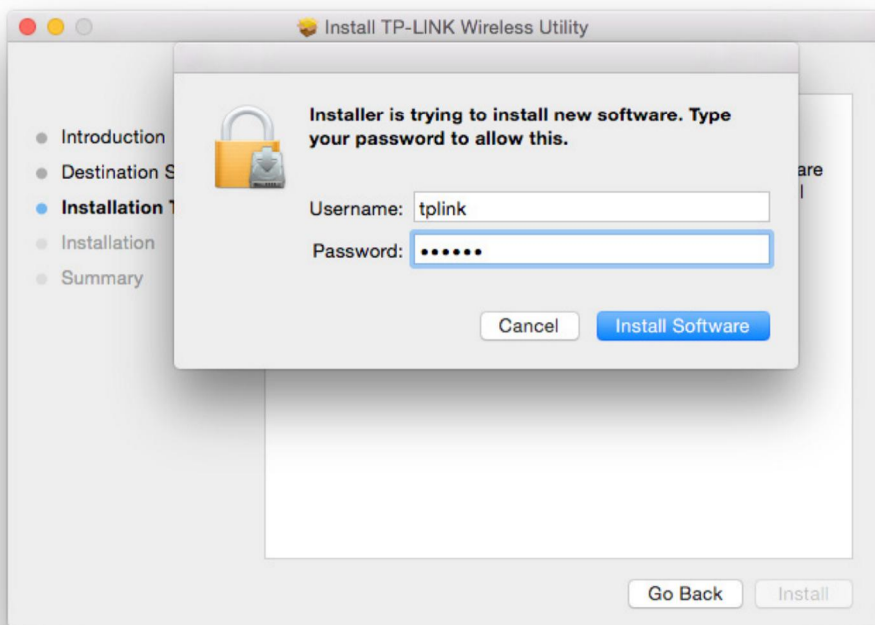
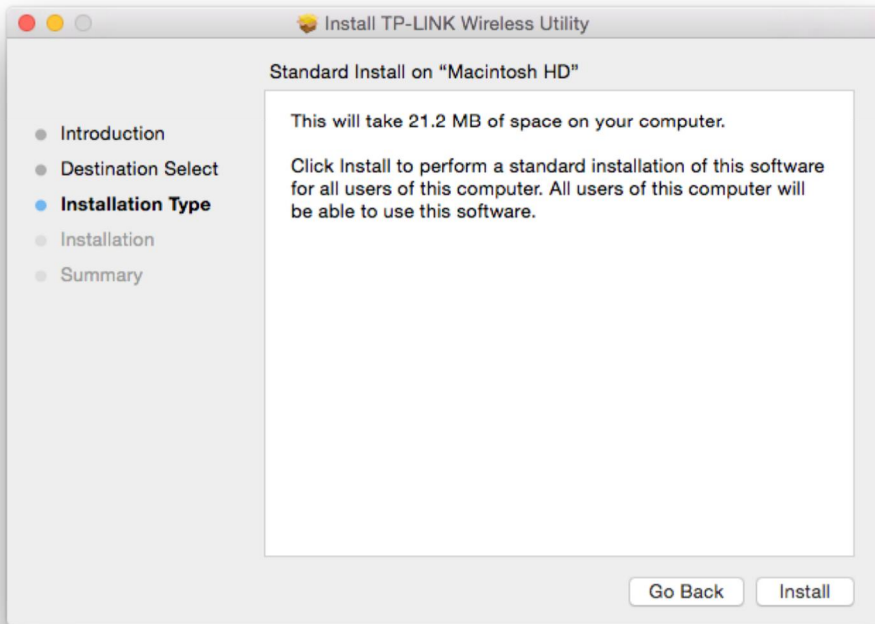


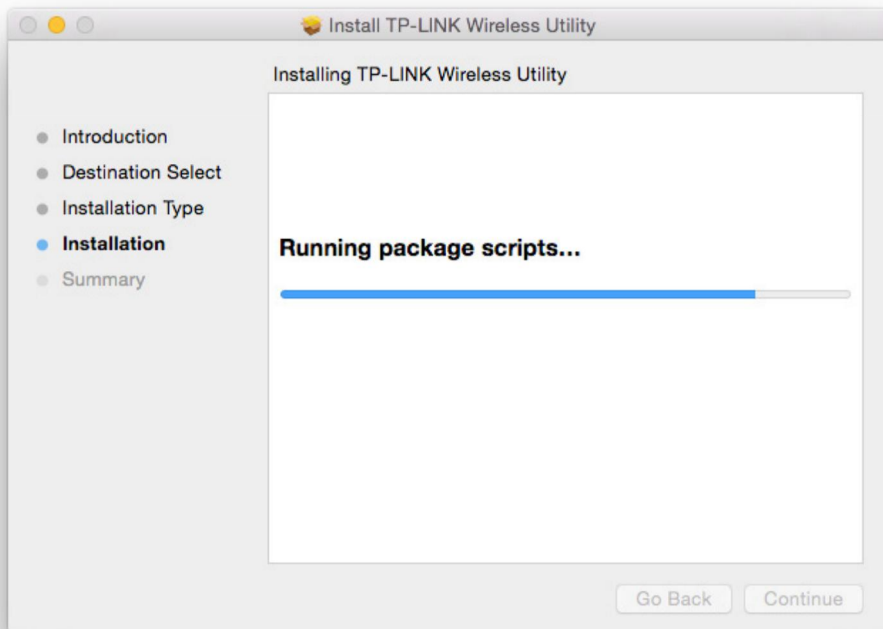
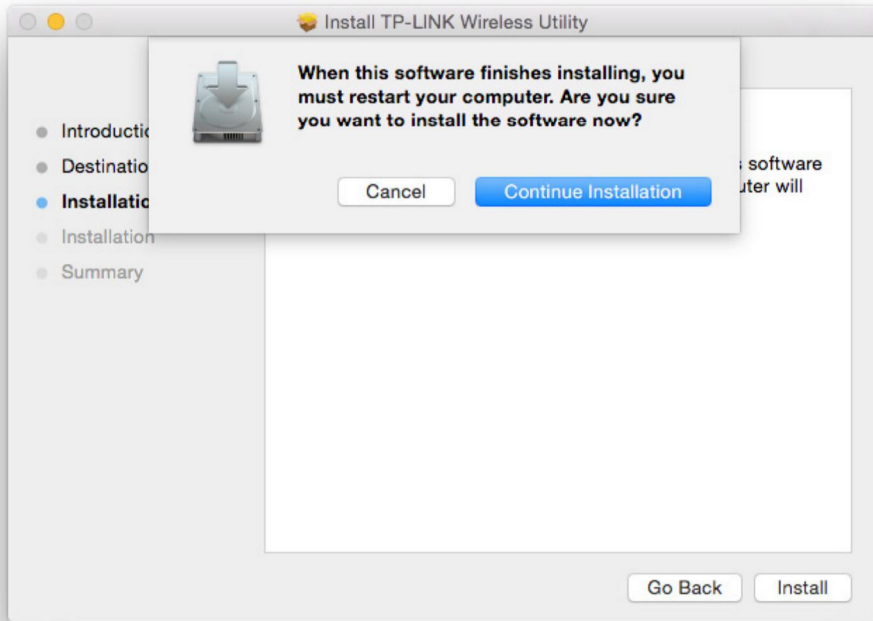
4. Double click the [Installer.pkg](#) file to open the installation wizard.

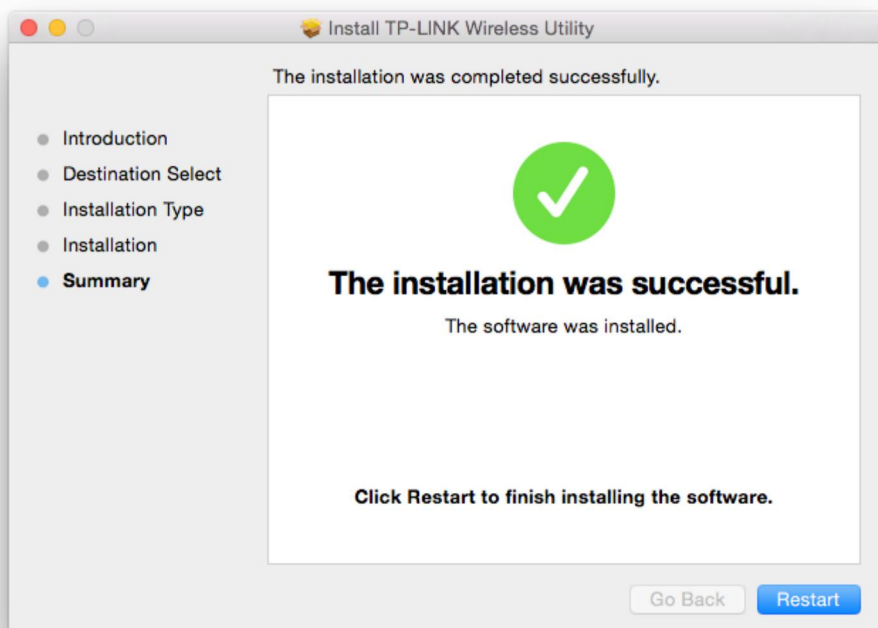



5. The [Install TP-LINK Wireless Utility](#) Wizard window will appear. Click [Continue](#) and follow the wizard to continue the installation.










6. After restarting the computer, the TP-LINK Utility icon  will appear on the menu bar in the upper-right corner of the screen. To use the utility to join a Wi-Fi network with your adapter, refer to [Join a Wireless Network](#).

■ **Note:**

If the TP-LINK Utility icon  does not appear on the menu bar, make sure the USB wireless network adapter is connected properly and its LED is on.

4.2. Join a Wireless Network

There are two options of using the adapter to join a Wi-Fi network.

Option 1: [TP-LINK Utility](#)

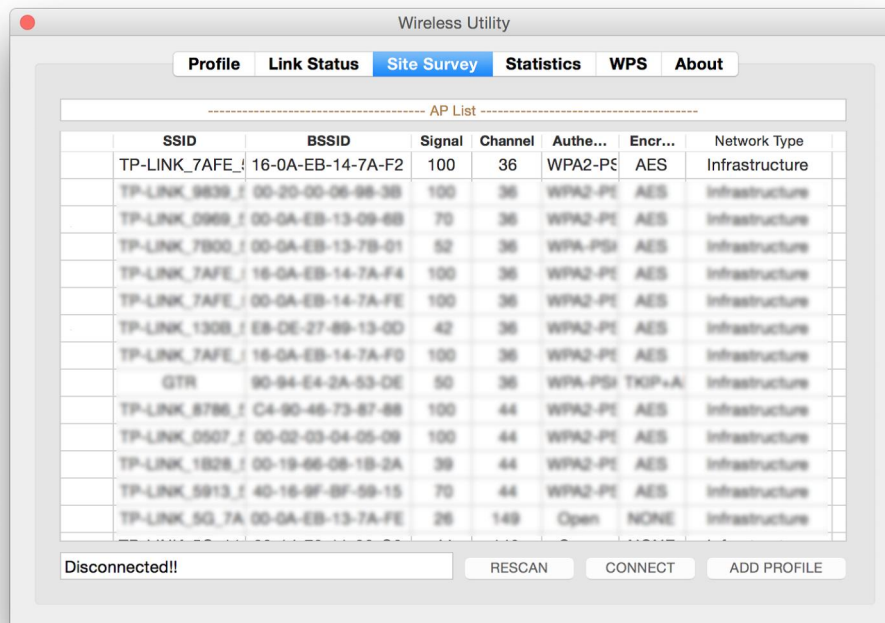
TP-LINK Utility lets you easily connect the adapter to a Wi-Fi network and manage the adapter.

Option 2: [WPS \(Wi-Fi Protected Setup\)](#)

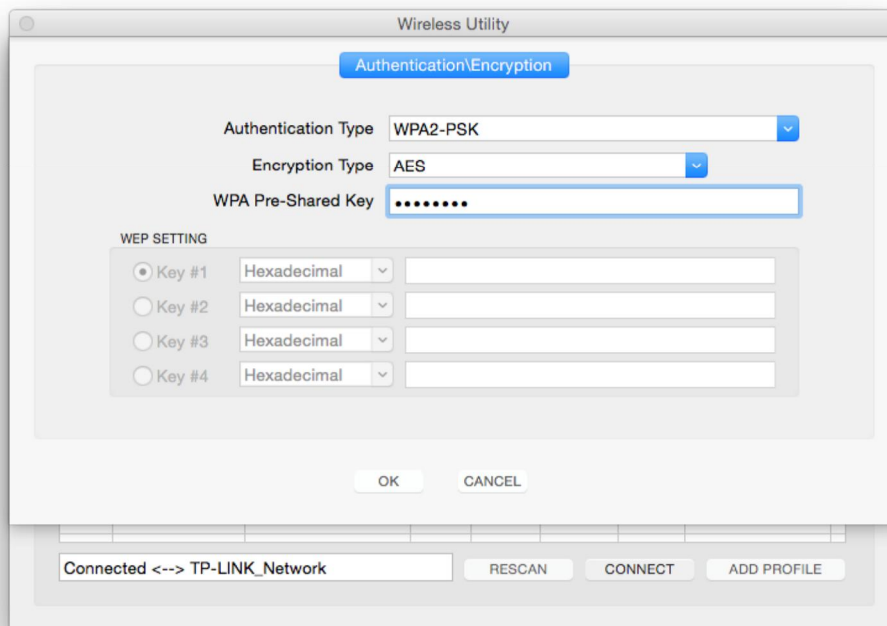
WPS (Wi-Fi Protected Setup) is a network security standard for easily adding computers and other devices to a home network. Use this method if your wireless router or access point supports WPS.


4.2.1. TP-LINK Utility

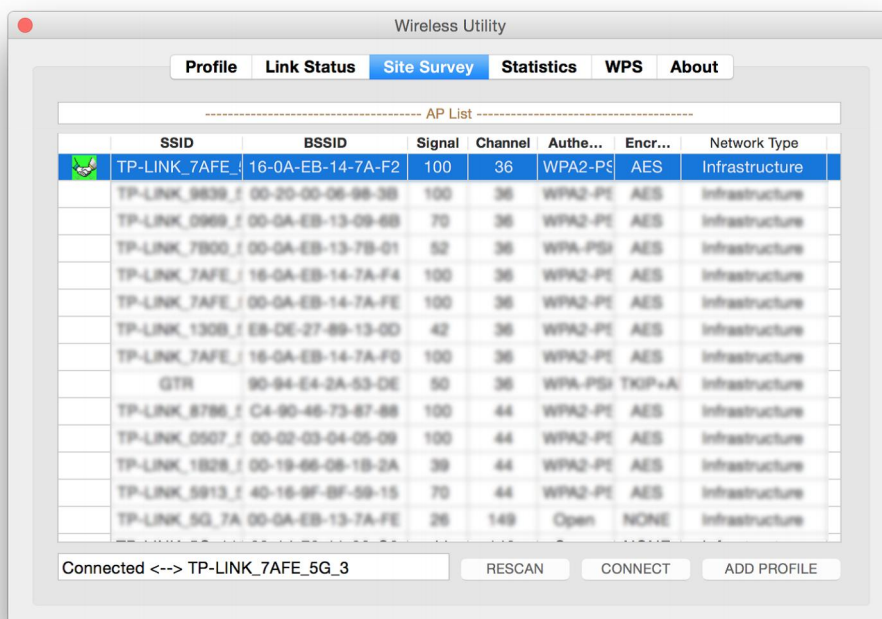
1. Open TP-LINK Utility and select **Site Survey** tab. Then select the network you want to join from the list and click **CONNECT**.



2. The **Authentication\Encryption** screen displays. If your network uses wireless security, you will be prompted to enter the Wi-Fi password of the network. Then click **OK**.



3. After successfully connecting to your network, you will see a symbol  in front of your network's SSID, which indicates a successful connection.

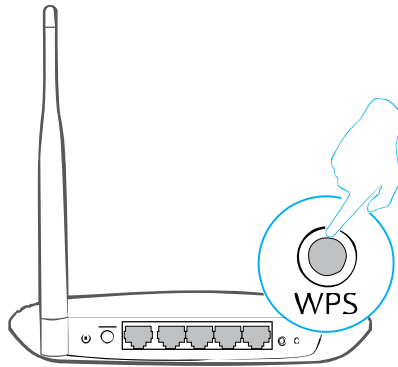


4.2.2. WPS (Wi-Fi Protected Setup)

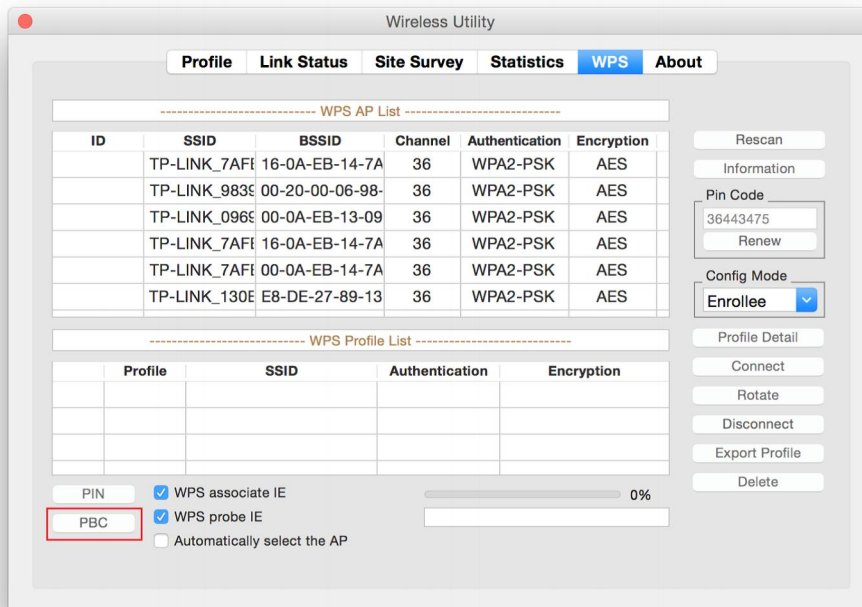
WPS can be activated via PBC (Push Button Configuration) and PIN code. Please refer to [PBC](#) or [PIN](#) below.

- PBC

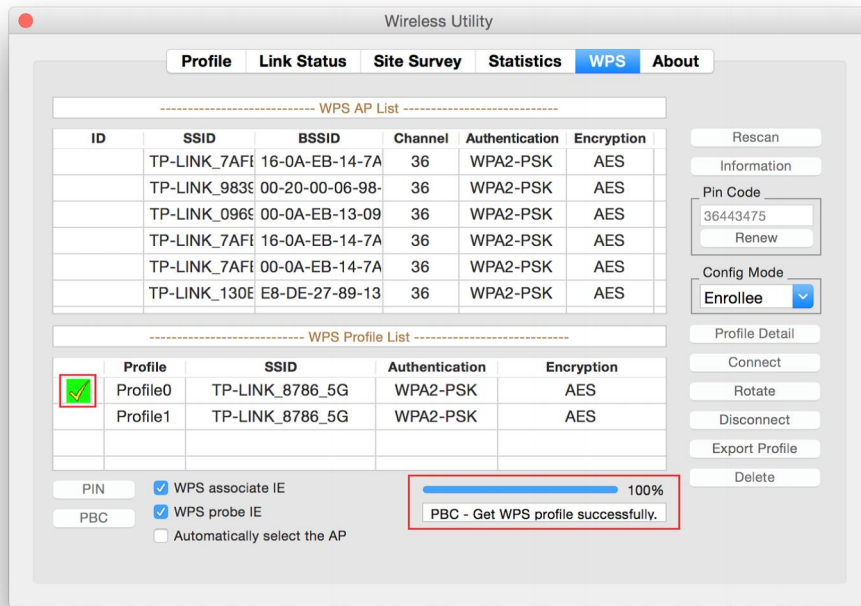
1. Press the [WPS/QSS](#) button on your router or AP.



2. Within 2 minutes, open TP-LINK Utility and click [WPS](#) tab. Click [PBC](#).

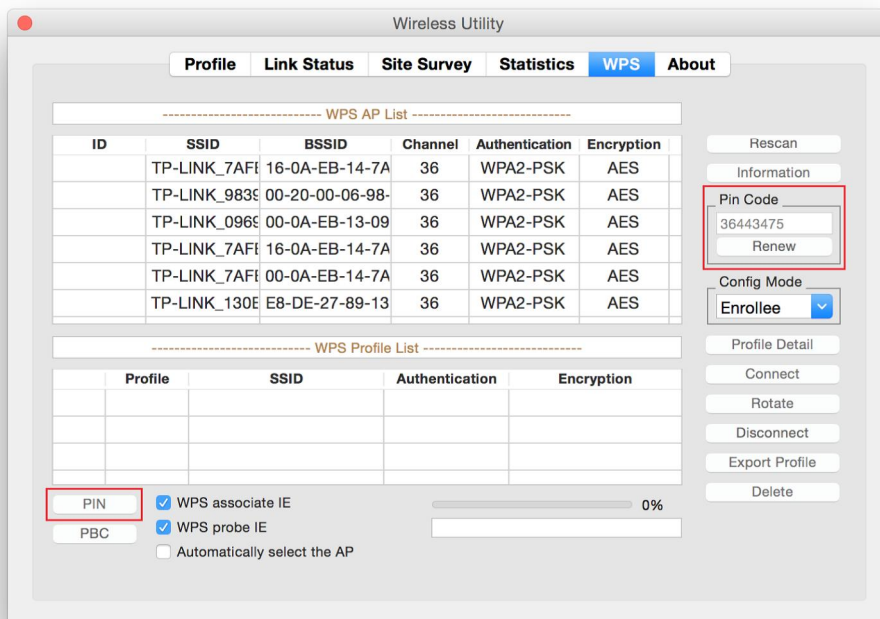


3. The following screen indicates a successful connection by WPS.



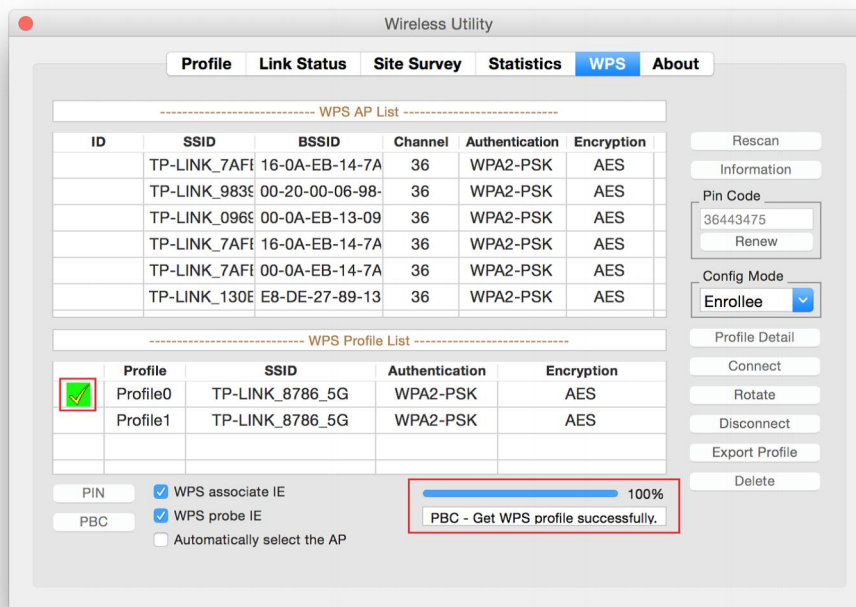
• PIN

1. Open TP-LINK Utility and click **WPS** tab. Mark down the PIN displayed on the screen. Select the network you want to join from the **WPS AP List** and click **PIN**.



2. Within 2 minutes, log in to the Web Management page of your router or AP. Go to its **WPS** page, enter the PIN of the adapter in the corresponding field and click **Connect**.

3. The following screen indicates a successful connection by WPS.



4.3. Management

TP-LINK Utility provides you with an easy way to manage various connection settings of your Wi-Fi network. It includes the following sections:

Link Status - View the information of the current Wi-Fi network connection and of the adapter.

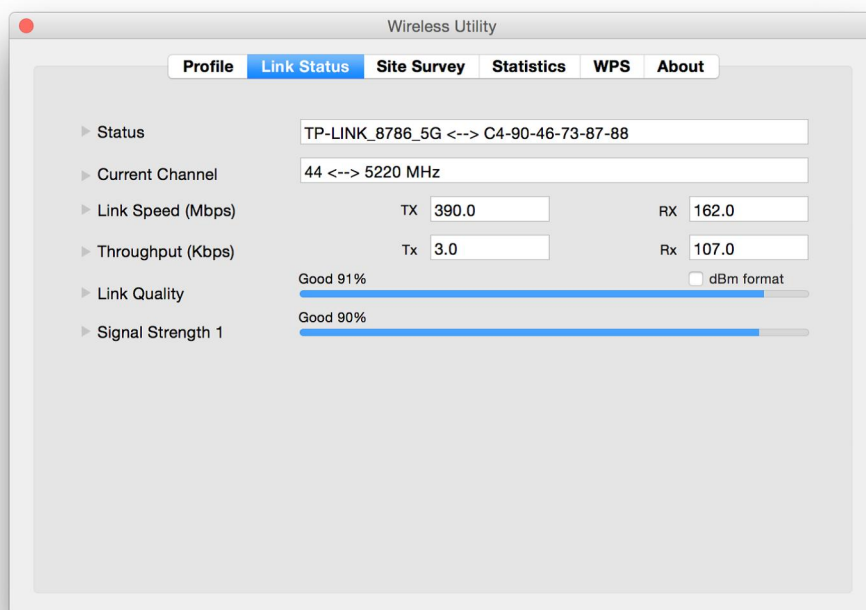
Profile - Save or manage various Wi-Fi network connection settings.

About - View the utility version and the driver version of your adapter.

Open TP-LINK Utility and click the **Link Status** or **Profile** tab to manage the corresponding section of your adapter.

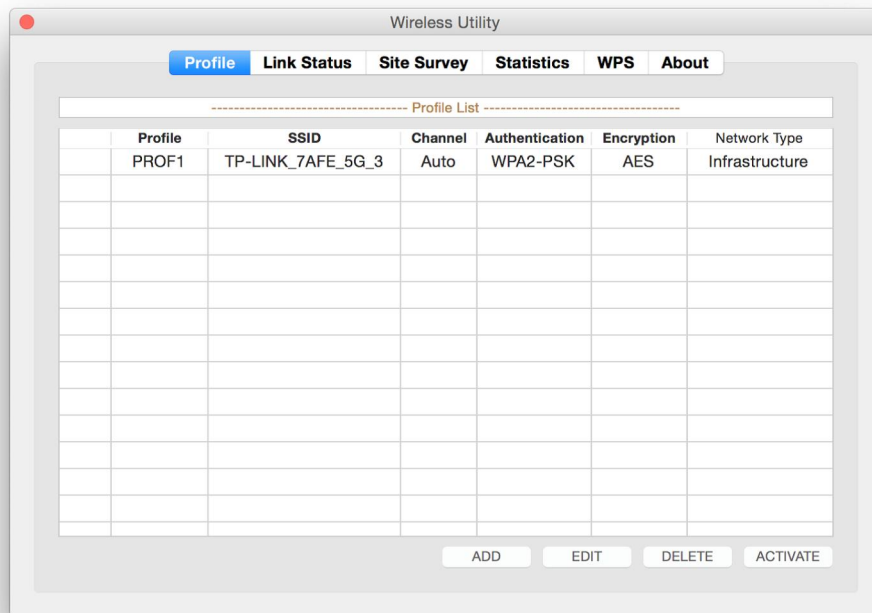
4.3.1. Link Status

You can view the current channel, the link quality and signal strength of the Wi-Fi network, and other information of the link status as shown in the following figure.



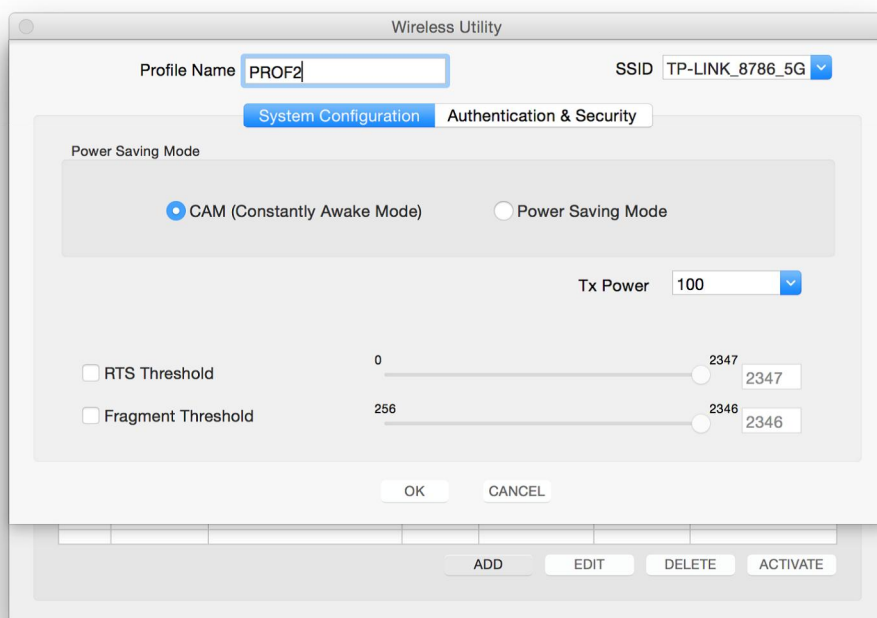
4.3.2. Profile

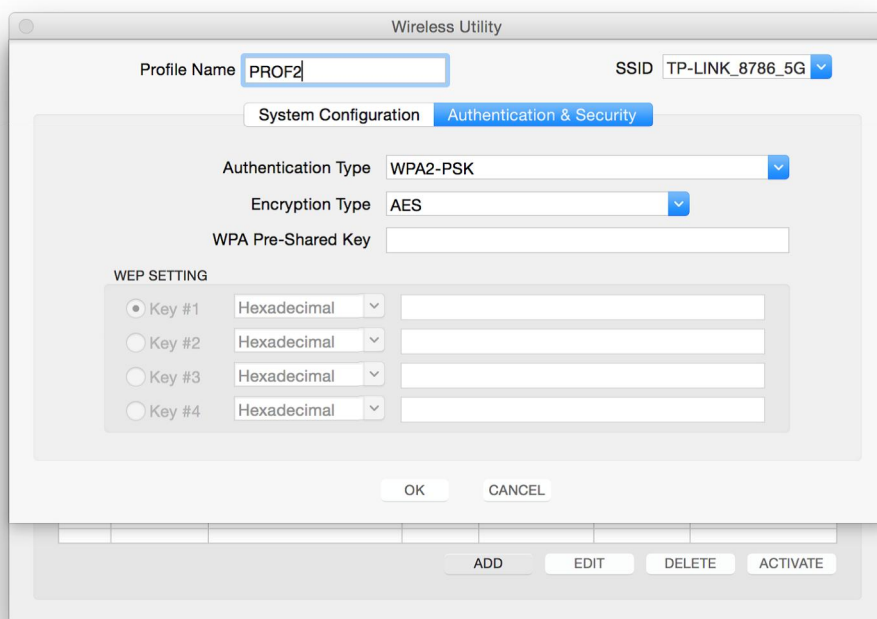
The **Profile** screen lets you save and manage different Wi-Fi network connection settings as profiles so that you can quickly and simply connect to your network. Moreover, you can join a hidden Wi-Fi network that does not broadcast its SSID by adding a profile, provided that you know its wireless settings, such as SSID, security type, and encryption type. For details, please refer to the instructions below: [To add a new profile](#), [To join a Wi-Fi network](#), and [To manage an existing profile](#).



- **To add a new profile**

1. Click the **ADD** button, and then a new window will pop up.
2. Complete the settings as shown in the following figure, and click **OK**.





Profile Name - Enter a name for your profile, such as Home, Office, Coffee house. Do not enter the profile name that already exists.

SSID - Enter the name of your Wi-Fi network.

System Configuration:

Select **CAM (Constantly Awake Mode)** or **Power Saving Mode** depending on your preference. In **Power Saving Mode**, the adapter will automatically reduce its power consumption when not being used.

You can specify the **Tx Power** level to adjust the transmit power of the adapter. A lower level will reduce performance, but it decreases interference in the local network environment.

■ Note:

It is recommended to keep the default values for the settings of **RTS Threshold** and **Fragment Threshold**. Advanced users can make adjustments if necessary.

Authentication & Security:

Select or enter the corresponding wireless settings, including **Authentication Type**, **Encryption Type** and **WPA Pre-Shared Key**, which should be the same as those of your Wi-Fi network.

• To join a Wi-Fi network

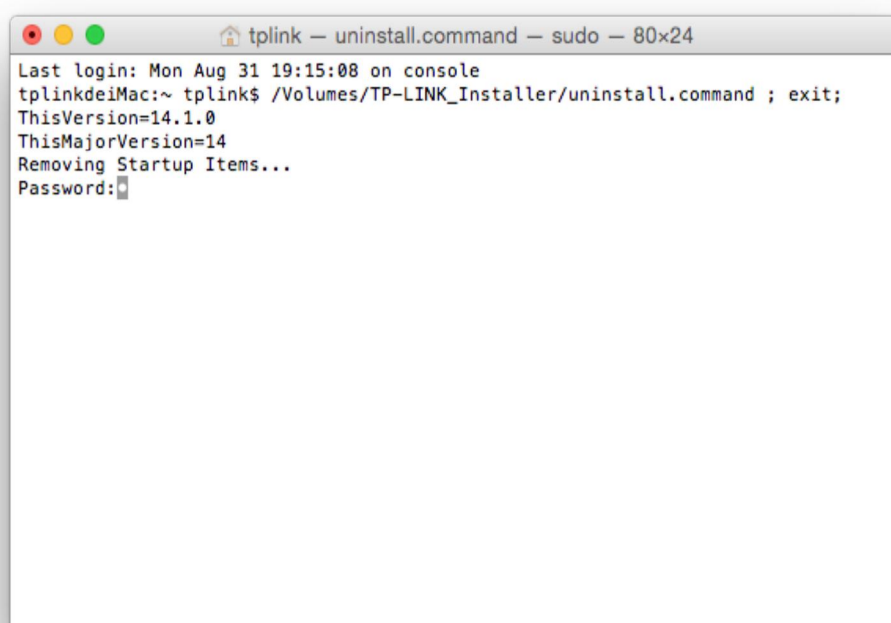
If you want to join a Wi-Fi network that listed in the profile screen, select the profile and click the **ACTIVATE** button in the bottom corner.

- **To manage an existing profile**

If you want to change the name or the wireless settings of an existing profile, select it and click the **EDIT** button in the profile screen, and then you can edit the settings of this profile. If you want to delete a profile that you no longer use, select it and click the **DELETE** button.

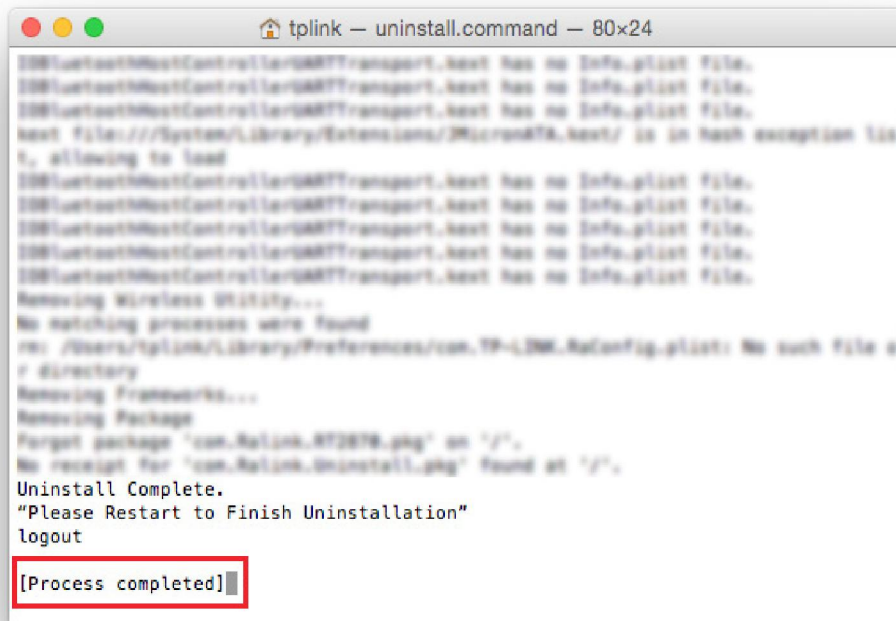
4.4. Uninstall Driver and Utility

1. Insert the CD and run it manually.
2. Go to [Archer T1U](#) > [Mac OS X Driver](#) > [TP-LINK_Installer.dmg](#) > [Uninstall.command](#).



```
tpink -- uninstall.command -- sudo -- 80x24
Last login: Mon Aug 31 19:15:08 on console
tpinkdeiMac:~ tpink$ /Volumes/TP-LINK_Installer/uninstall.command ; exit;
ThisVersion=14.1.0
ThisMajorVersion=14
Removing Startup Items...
Password:█
```

3. A command window will pop up, please type the password of the root user to uninstall the software.
4. Wait till the “**Process completed**” shows up, and then restart your computer to finish the uninstallation.



```
tplink -- uninstall.command -- 80x24
IOBluetoothHostControllerUARTTransport.kext has no Info.plist file.
IOBluetoothHostControllerUARTTransport.kext has no Info.plist file.
IOBluetoothHostControllerUARTTransport.kext has no Info.plist file.
kext file:///System/Library/Extensions/IOFireWireATA.kext/ is in hash exception list, allowing to load
IOBluetoothHostControllerUARTTransport.kext has no Info.plist file.
IOBluetoothHostControllerUARTTransport.kext has no Info.plist file.
IOBluetoothHostControllerUARTTransport.kext has no Info.plist file.
IOBluetoothHostControllerUARTTransport.kext has no Info.plist file.
IOBluetoothHostControllerUARTTransport.kext has no Info.plist file.
IOBluetoothHostControllerUARTTransport.kext has no Info.plist file.
Removing Wireless Utility...
No matching processes were found
rm: /Users/tplink/Library/Preferences/com.TP-LINK.RaFonfig.plist: No such file or directory
Removing Frameworks...
Removing Package
Forget package 'com.Ralink.RT2870.pkg' on '/'.
No receipt for 'com.Ralink.Uninstall.pkg' found at '/'.
Uninstall Complete.
"Please Restart to Finish Uninstallation"
logout
[Process completed]
```

Chapter 5

Linux

Visit the TP-LINK's website at <http://www.tp-link.com>, and go to Archer T1U's product page. Then find the compatible version of driver in the support page. Download and install the driver on your computer.

COPYRIGHT & TRADEMARKS

Specifications are subject to change without notice. **TP-LINK** is a registered trademark of TP-LINK TECHNOLOGIES CO., LTD. Other brands and product names are trademarks or registered trademarks of their respective holders.

No part of the specifications may be reproduced in any form or by any means or used to make any derivative such as translation, transformation, or adaptation without permission from TP-LINK TECHNOLOGIES CO., LTD. Copyright © 2016 TP-LINK TECHNOLOGIES CO., LTD. All rights reserved.

FCC STATEMENT



This equipment has been tested and found to comply with the limits for a Class B digital device, pursuant to part 15 of the FCC Rules. These limits are designed to provide reasonable protection against harmful interference in a residential installation. This equipment generates, uses and can radiate radio frequency energy and, if not installed and used in accordance with the instructions, may cause harmful interference to radio communications. However, there is no guarantee that interference will not occur in a particular installation. If this equipment does cause harmful interference to radio or television reception, which can be determined by turning the equipment off and on, the user is encouraged to try to correct the interference by one or more of the following measures:

- Reorient or relocate the receiving antenna.
- Increase the separation between the equipment and receiver.
- Connect the equipment into an outlet on a circuit different from that to which the receiver is connected.
- Consult the dealer or an experienced radio/ TV technician for help.

This device complies with part 15 of the FCC Rules. Operation is subject to the following two conditions:

- 1) This device may not cause harmful interference.
- 2) This device must accept any interference received, including interference that may cause undesired operation.

Any changes or modifications not expressly approved by the party responsible for compliance could void the user's authority to operate the equipment.

Note: The manufacturer is not responsible for any radio or TV interference caused by unauthorized modifications to this equipment. Such modifications could void the user's authority to operate the equipment.

FCC RF Radiation Exposure Statement:

This equipment complies with FCC radiation exposure limits set forth for an uncontrolled environment. End users must follow the specific operating instructions for satisfying RF exposure compliance. This transmitter must not be co-located or operating in conjunction with any other antenna or transmitter. This equipment has been SAR-evaluated for use in hand. SAR measurements are based on a 5mm spacing from the body and that compliance is achieved at that distance.