

# TP-LINK®

## User Guide

**TL-WN723N**

**150Mbps Mini Wireless N USB Adapter**



## COPYRIGHT & TRADEMARKS

Specifications are subject to change without notice. **TP-LINK®** is a registered trademark of TP-LINK TECHNOLOGIES CO., LTD. Other brands and product names are trademarks or registered trademarks of their respective holders.

No part of the specifications may be reproduced in any form or by any means or used to make any derivative such as translation, transformation, or adaptation without permission from TP-LINK TECHNOLOGIES CO., LTD. Copyright © 2010 TP-LINK TECHNOLOGIES CO., LTD. All rights reserved.

<http://www.tp-link.com>

## **FCC STATEMENT**



This equipment has been tested and found to comply with the limits for a Class B digital device, pursuant to part 15 of the FCC Rules. These limits are designed to provide reasonable protection against harmful interference in a residential installation. This equipment generates, uses and can radiate radio frequency energy and, if not installed and used in accordance with the instructions, may cause harmful interference to radio communications. However, there is no guarantee that interference will not occur in a particular installation. If this equipment does cause harmful interference to radio or television reception, which can be determined by turning the equipment off and on, the user is encouraged to try to correct the interference by one or more of the following measures:

- Reorient or relocate the receiving antenna.
- Increase the separation between the equipment and receiver.
- Connect the equipment into an outlet on a circuit different from that to which the receiver is connected.
- Consult the dealer or an experienced radio/ TV technician for help.

This device complies with part 15 of the FCC Rules. Operation is subject to the following two conditions:

- 1) This device may not cause harmful interference.
- 2) This device must accept any interference received, including interference that may cause undesired operation.

Any changes or modifications not expressly approved by the party responsible for compliance could void the user's authority to operate the equipment.

## **FCC RF Radiation Exposure Statement**

This equipment complies with FCC radiation exposure limits set forth for an uncontrolled environment. End users must follow the specific operating instructions for satisfying RF exposure compliance. This transmitter must not be co-located or operating in conjunction with any other antenna or transmitter. This equipment has been SAR-evaluated for use in hand. SAR measurements are based on a 4mm spacing from the body and that compliance is achieved at that distance.

## CE Mark Warning



This is a class B product. In a domestic environment, this product may cause radio interference, in which case the user may be required to take adequate measures.

## National restrictions

This device is intended for home and office use in all EU countries (and other countries following the EU directive 1999/5/EC) without any limitation except for the countries mentioned below:

Country	Restriction	Reason/remark
Bulgaria	None	General authorization required for outdoor use and public service
France	Outdoor use limited to 10 mW e.i.r.p. within the band 2454-2483.5 MHz	Military Radiolocation use. Refarming of the 2.4 GHz band has been ongoing in recent years to allow current relaxed regulation. Full implementation planned 2012
Italy	None	If used outside of own premises, general authorization is required
Luxembourg	None	General authorization required for network and service supply(not for spectrum)
Norway	Implemented	This subsection does not apply for the geographical area within a radius of 20 km from the centre of Ny-Ålesund
Russian Federation	None	Only for indoor applications

Note: Please don't use the product outdoors in France.

## DECLARATION OF CONFORMITY

For the following equipment:

Product Description: **150Mbps Mini Wireless N USB Adapter**

Model No.: **TL-WN723N**

Trademark: **TP-LINK**

We declare under our own responsibility that the above products satisfy all the technical regulations applicable to the product within the scope of Council Directives:

Directives 1999/5/EC

The above product is in conformity with the following standards or other normative documents:

**ETSI EN 300 328 V1.7.1: 2006**

**ETSI EN 301 489-1 V1.8.1:2008 & ETSI EN 301 489-17 V1.3.2:2008**

**EN60950-1:2006**

**EN62311:2008**

**Recommendation 1999/519/EC**

Person is responsible for marking this declaration:



**Yang Hongliang**

**Product Manager of International Business**

TP-LINK TECHNOLOGIES CO., LTD.

South Building, No.5 Keyuan Road, Central Zone, Science & Technology Park, Nanshan,  
Shenzhen, P. R. China

# CONTENTS

<b>Package Contents .....</b>	<b>1</b>
<b>Chapter 1. Introduction .....</b>	<b>2</b>
1.1 Overview of the product.....	2
1.2 Features .....	2
1.3 LED Status .....	3
<b>Chapter 2. Installation Guide .....</b>	<b>4</b>
2.1 Hardware Installation.....	4
2.2 Software Installation .....	4
2.2.1 Overview .....	4
2.2.2 Installation Guide.....	4
<b>Chapter 3. Configuration Guide.....</b>	<b>8</b>
3.1 For Windows 7 .....	8
3.2 For Windows XP/Vista.....	9
3.2.1 General Status .....	10
3.2.2 Profile Management .....	11
3.2.3 Available Network.....	19
3.2.4 Status .....	19
3.2.5 Statistics.....	20
3.2.6 QSS.....	21
<b>Appendix A: Specifications .....</b>	<b>25</b>
<b>Appendix B: Glossary .....</b>	<b>26</b>

## Package Contents

The following contents should be found in your box:

- One TL-WN723N 150Mbps Mini Wireless N USB Adapter
- Quick Installation Guide
- One USB extension cable
- One Resource CD for TL-WN723N, including:
  - TP-LINK Wireless Client Utility (TWCU) and Drivers
  - User Guide
  - Other Helpful Information

 **Note:**

Make sure that the package contains the above items. If any of the listed items are damaged or missing, please contact with your distributor.

## Conventions

The 'Adapter' mentioned in this user guide stands for TL-WN723N 150Mbps Mini Wireless N USB Adapter without any explanations.

# Chapter 1. Introduction

Thank you for choosing **TL-WN723N 150Mbps Mini Wireless N USB Adapter**.

## 1.1 Overview of the product

TL-WN723N 150Mbps Mini Wireless N USB Adapter, taking the exquisite appearance with mini design, completely avoids covering the other ports around.

The adapter is designed to provide a high-speed and unrivaled wireless performance for your notebook and PC. With a faster wireless connection, you can get a better Internet experience, such as downloading, gaming, video streaming and so on.

The TL-WN723N's auto-sensing capability allows high packet transfer rate of up to 150Mbps for maximum throughput. It has good capability on anti-jamming; it can also interoperate with other wireless (802.11b/g/n) products. The adapter supports WEP, WPA and WPA2 encryption to prevent outside intrusion and protect your personal information from being exposed.

The Quick Setup Wizard guides you step-by-step through the installation process; the TP-LINK Wireless Client Utility helps you create a wireless connection immediately.

With unmatched wireless performance, reception, and security protection, the TL-WN723N is the best choice for easily adding or upgrading wireless connectivity.

## 1.2 Features

- IEEE802.11b, IEEE802.11g, IEEE802.11n standards
- Supports WPA/WPA2 data security, IEEE802.1x authentication, TKIP/AES encryption, WEP encryption
- Make use of IEEE 802.11n wireless technology to provide a wireless data rate of up to 150Mbps
- supports automatically adjust to lower speeds due to distance or other operating limitations
- Provides USB interface
- Supports Ad-Hoc and Infrastructure modes
- Good capability on anti-jamming
- Supports roaming between access points when configured in Infrastructure mode
- Ease to configure and provides monitoring information
- Supports Windows 2000, Windows XP, Windows Vista and Windows 7



### 1.3 LED Status

Status	Working Status
Off	The driver has not been installed.
Flashing Slowly	The driver has been installed but there is no data being transmitted or received.
Flashing Quickly	There is data being transmitted or received.

## Chapter 2. Installation Guide

### 2.1 Hardware Installation

Plug the Adapter directly to the USB port on your computer.

 **Note:**

The promoted Found New Hardware Wizard screen will pop up when the adapter is installed correctly. Click **Cancel**.

### 2.2 Software Installation

#### 2.2.1 Overview

The Setup steps for Windows XP/Vista/7 are very similar. The following installation guide takes Windows XP for example.

#### 2.2.2 Installation Guide

1. Insert the Resource CD into your CD-ROM drive, and the Figure 2-1 will appear. To continue, select the **TL-WN723N**. There will be a menu including: **Install Driver & Utility** and **User Guide**.



Figure 2-1

2. Click **Install Driver & Utility** to load the following screen.

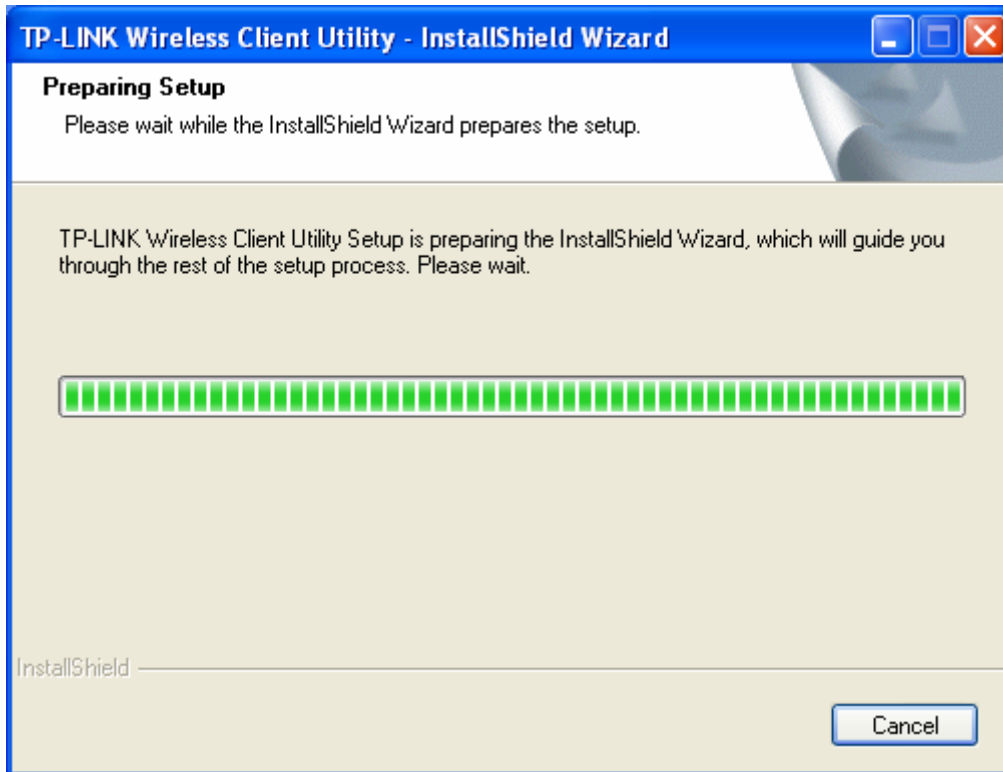


Figure 2-2

3. Soon, Figure 2-3 will display after a moment. Click **Next** to continue.

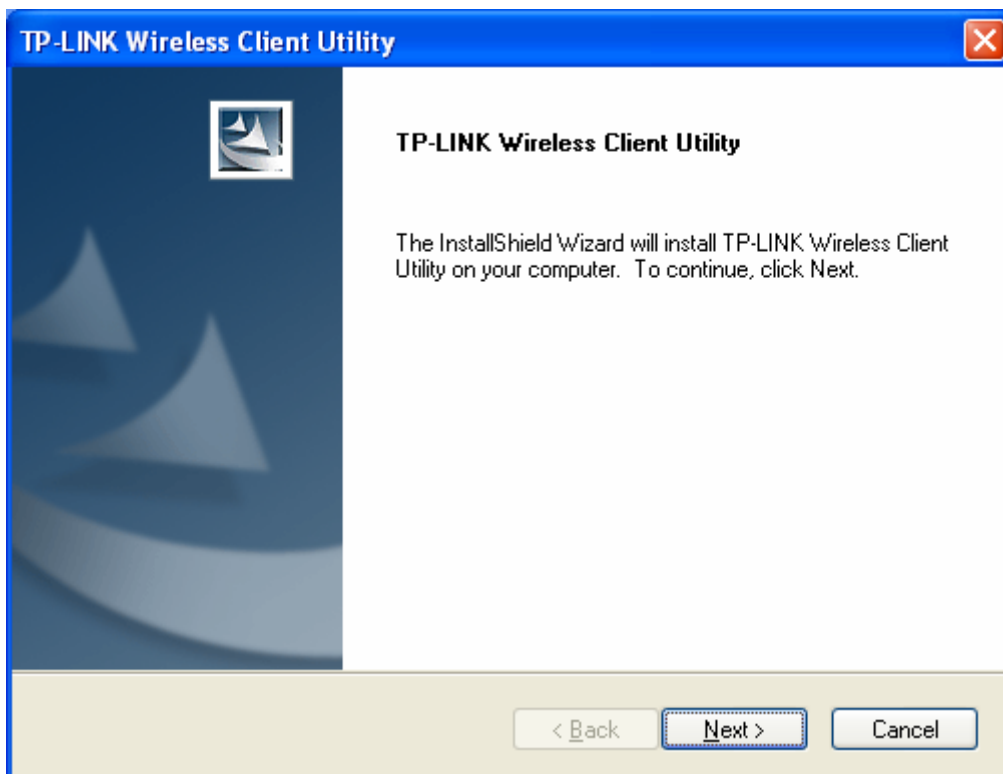


Figure 2-3

4. In the following figure, click **Install** to continue.

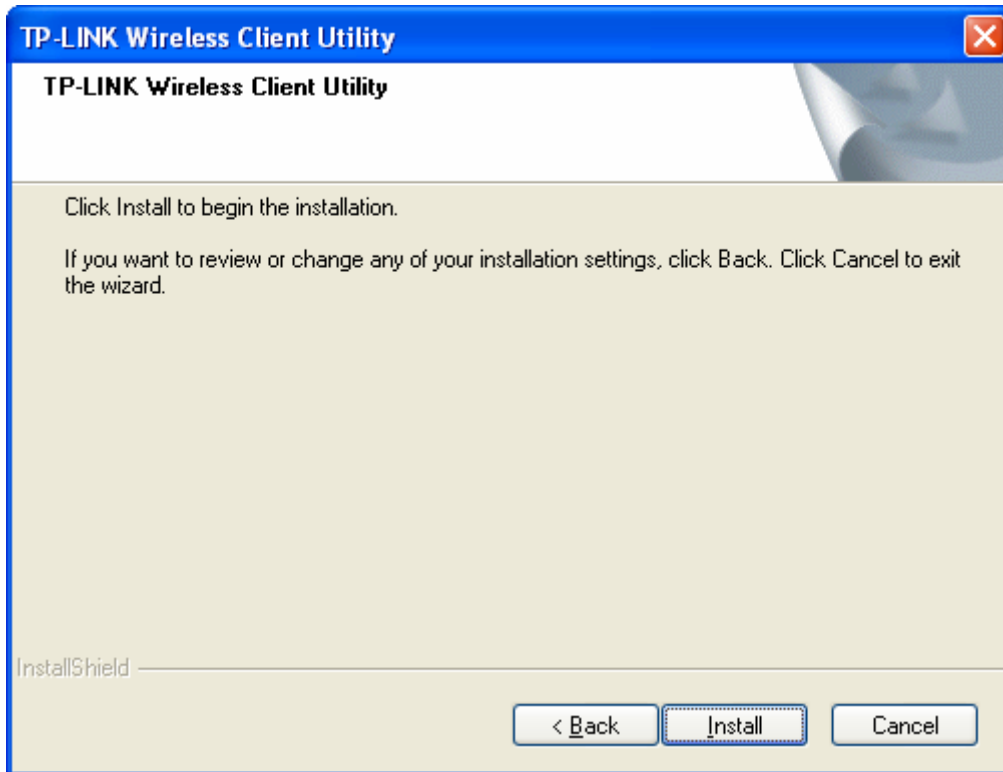


Figure 2-4

5. Wait a while for the setup progress as shown in Figure 2-5.

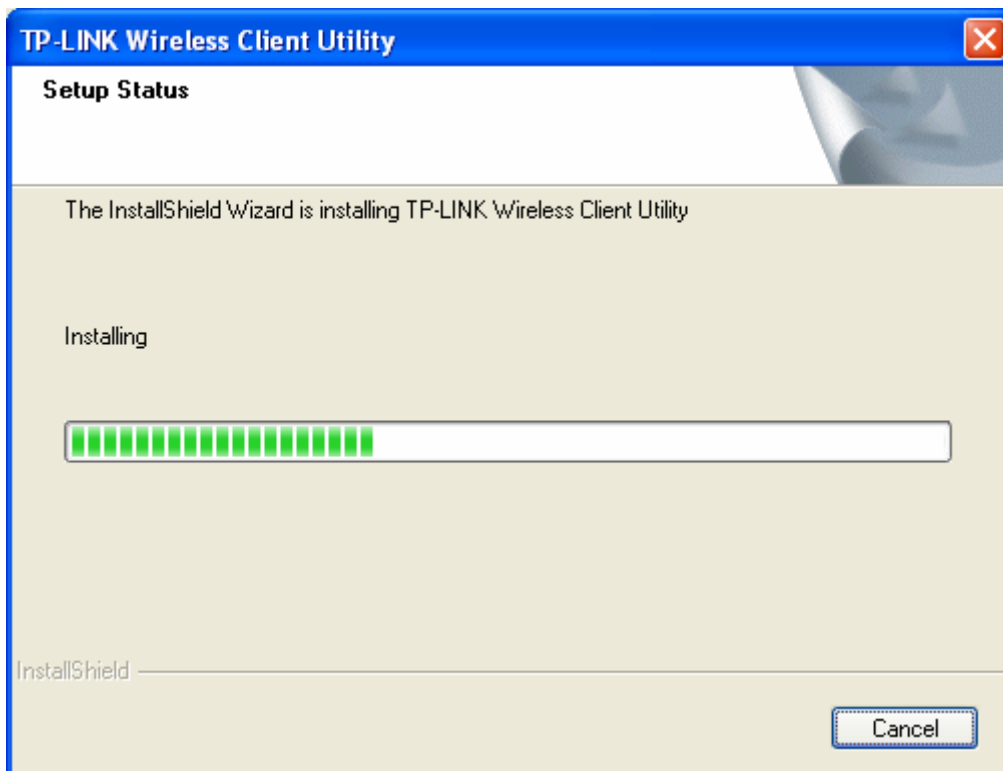


Figure 2-5

6. After all the steps above, you will see the screen below, click **Finish** to complete.

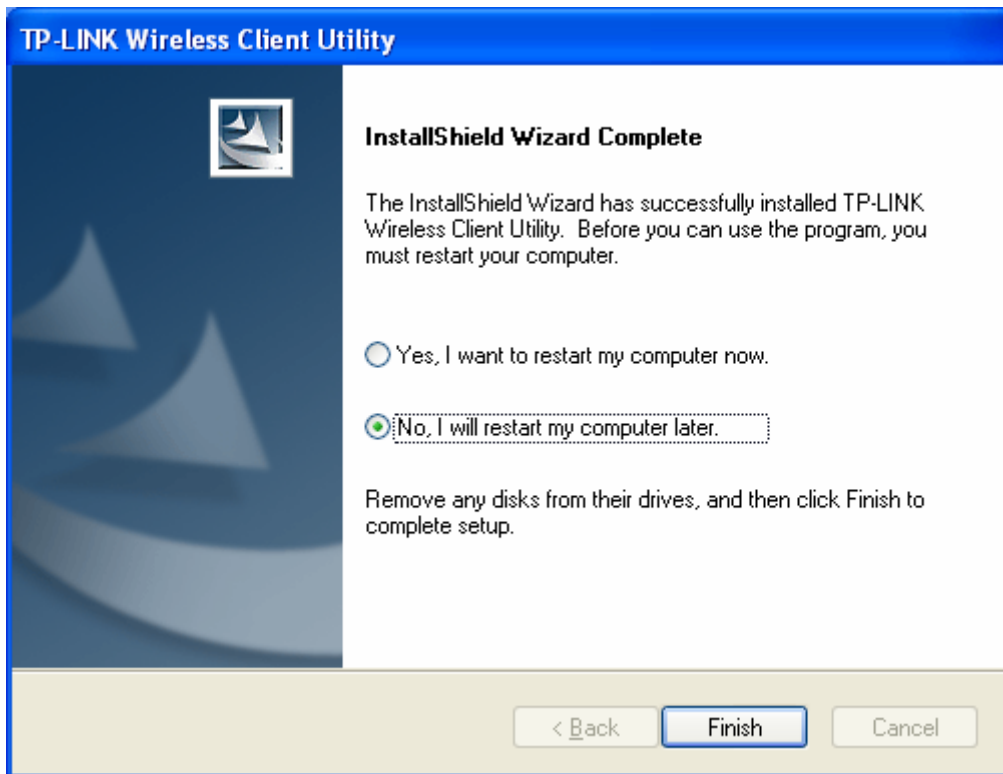


Figure 2-6

## Chapter 3. Configuration Guide

### 3.1 For Windows 7

TP-LINK Wireless Client Utility (TWCU) is not available for Windows 7. So after the Adapter's driver has been installed, we have to use Windows WLAN Autoconfig to establish a connection. Please follow the steps below.


1. Click the icon  at the bottom of your screen in your system tray and then you will see the available wireless network list. Select the SSID of your Access Point and click **Connect**.



Figure 3-1

2. If your wireless network is secured, you will be required to enter the security key as shown in Figure 3-2. Enter the passphrase, take **1234567890** for example. And then click **OK**.

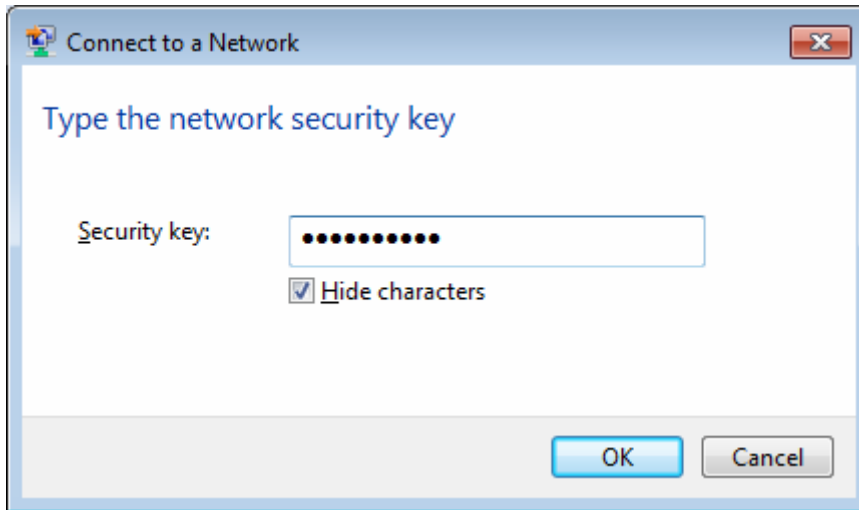


Figure 3-2

3. If the key entered is correct, you will successfully connect to the network as shown in Figure 3-3.

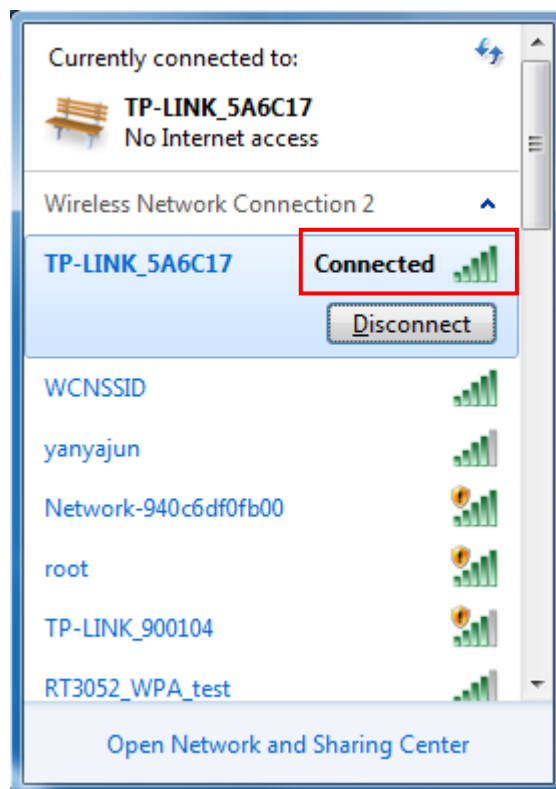





Figure 3-3

## 3.2 For Windows XP/Vista

TP-LINK TL-WN723N can be configured by **TP-LINK Wireless Client Utility (TWCU)**. This chapter describes how to configure your Adapter for wireless connectivity on your Wireless Local Area Network (WLAN) and use the data security encryption features.

After Installing the Adapter, the Adapter's tray icon  will appear in your system tray. It appears at the bottom of the screen, and shows the signal strength using color and the received signal strength indication (RSSI).

 If the icon is gray, there is no connection.

 If the icon is red, there is poor signal strength and the RSSI is less than 5dB.

 If the icon is yellow, there is poor signal strength and the RSSI is between 5dB and 10dB.

 If the icon is green, there is good signal strength and the RSSI is between 10dB and 20dB.

 If the icon is green, there is excellent signal strength and the RSSI is more than 20dB.

Double-click the icon and the **TWCU** will run. You can also run the utility by clicking the **Start** → **All Programs** → **TP-LINK** → **TP-LINK Wireless Client Utility**. The TWCU provides some integrated and easy tools to:

- Display current status information
- Edit and add configuration profiles
- Display current diagnostics information

The section below takes Windows XP for example to introduce these above capabilities.

### 3.2.1 General Status

Choose the tab **General** as shown in Figure 3-4, the left field displays the type of the adapter, the right field displays the status about the connection, including Status, Speed, Type, SSID, Signal Strength, Link Quality and other IP information.



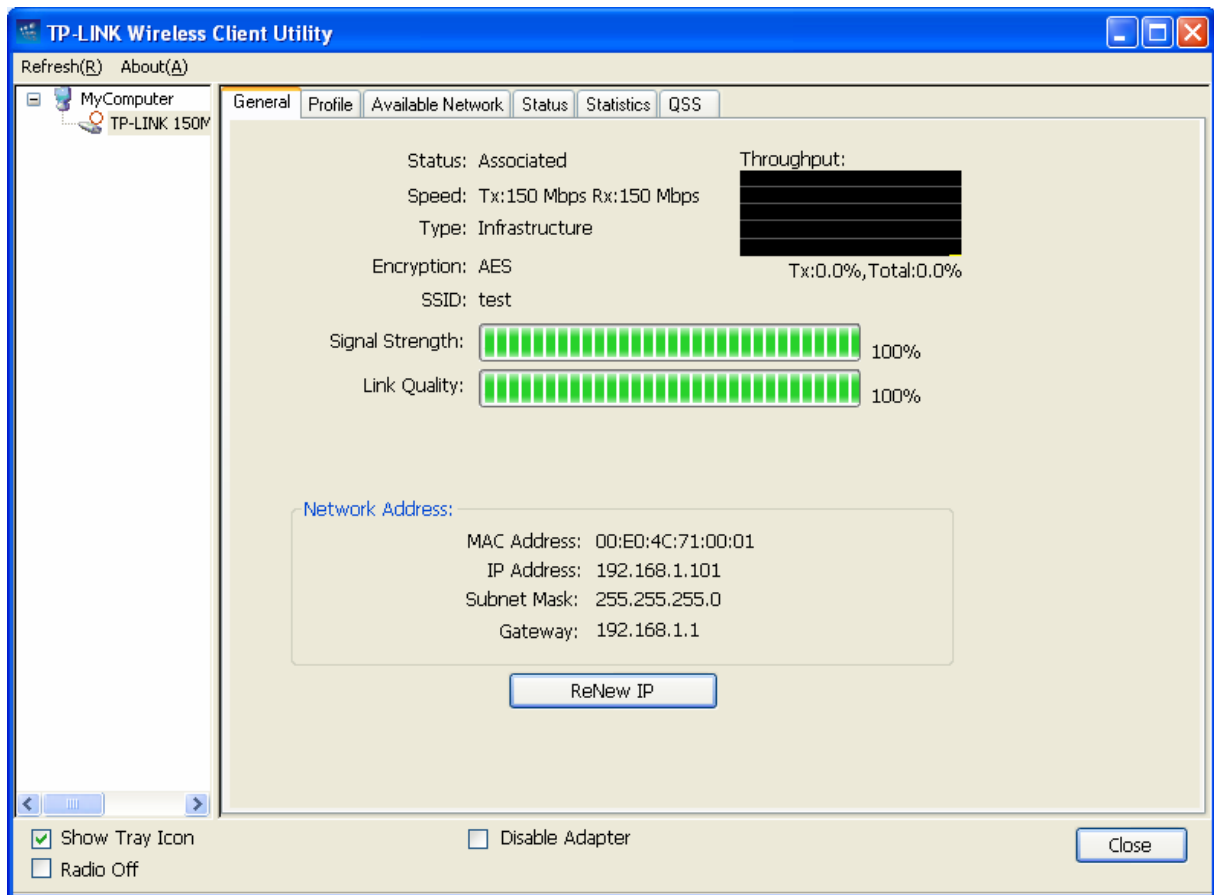



Figure 3-4

- **Signal Strength** - This shows the strength of the wireless signal.
- **Link Quality** - This shows the quality of the wireless connection.
- **ReNew IP** - Click the button to get the IP address from the AP.
- **Show Tray Icon** - Select the option to display the icon  on the bottom of the desktop. Otherwise, you can see the two icons.
- **Disable Adapter** - If you select the option, the adapter can't work.
- **Radio Off** - If you select the option, the wireless function will be ineffective.

Click **Close** to close the screen.

### 3.2.2 Profile Management

Click the tab **Profile** as shown in Figure 3-5 to add, remove, edit, duplicate or set default for a profile.

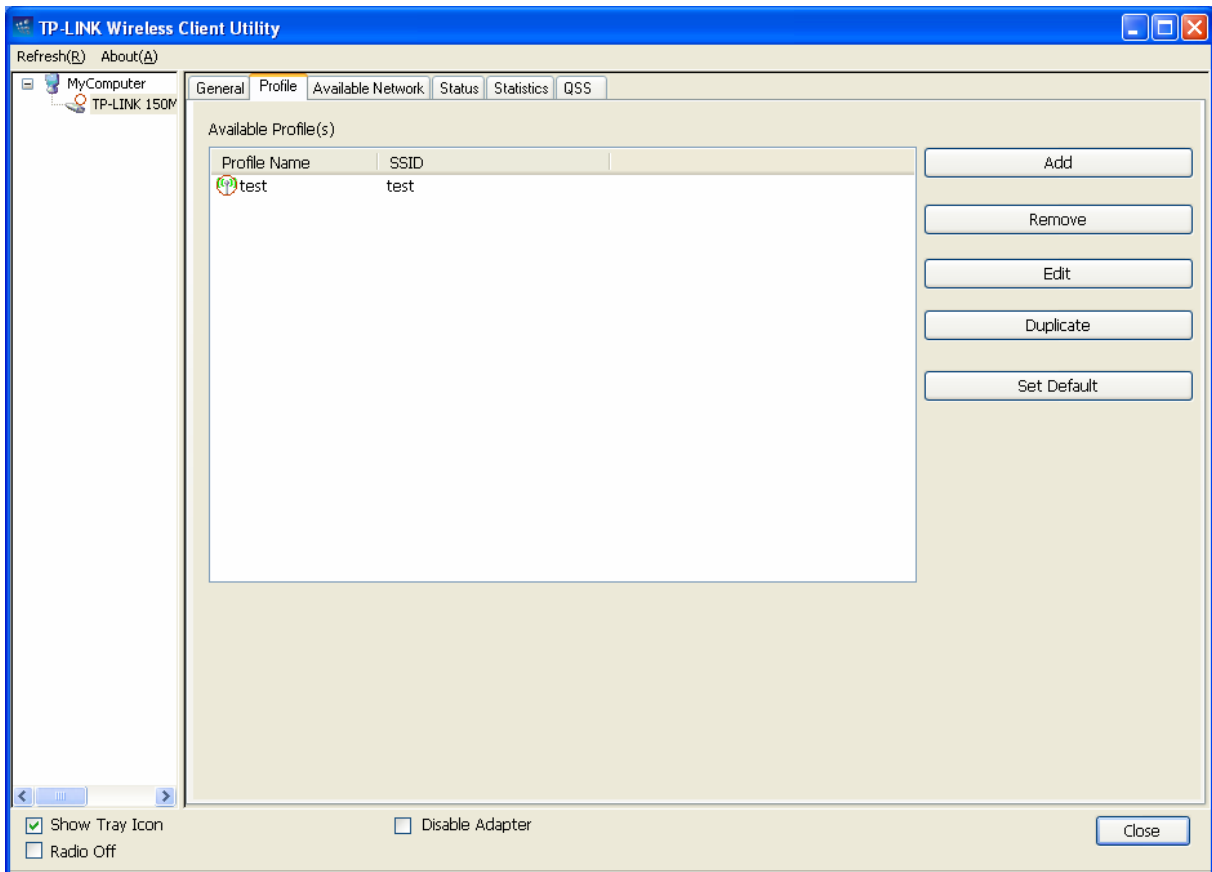


Figure 3-5

### 3.2.2.1. Add or Edit a Configuration Profile

Click the button **Add** or **Edit** (you should select an existed profile first to edit it) on the screen above, and you can configure the profile as shown in Figure 3-6.

We add a new profile and configure it for example here.

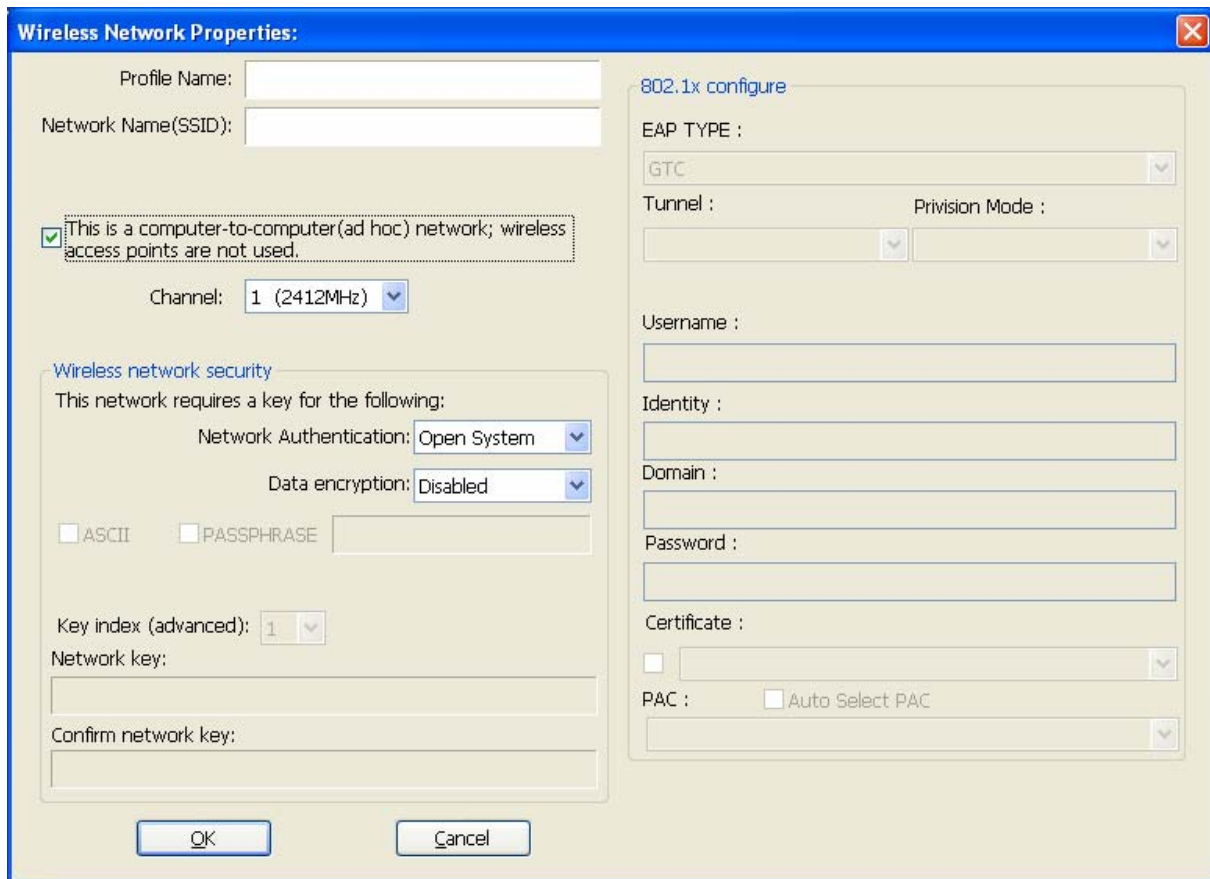


Figure 3-6

- **Profile Name** - Please enter the Profile name which identifies the configuration profile. This name must be unique. Note that the profile names are not case-sensitive.
- **Network Name (SSID)** - Please enter the IEEE 802.11 wireless network name. This field has a maximum limit of 32 characters.

 **Note:**

The **Profile Name** and **Network Name** are necessary for the profile, you must configure it.

- **Channel** - If you want to use the specific channel to connect to the wireless network, select the option “This is a computer-to-computer (ad-hoc) network; wireless access points are not used.” If you don’t select the option, the system will search the available channel to connect.
- **Wireless network security** - This configure the security for the adapter.

 **Note:**

You should configure the security for the adapter according with the wireless network that you want to connect. If the wireless network takes some security measure, you should configure the same security for the adapter accordingly. If the wireless network doesn’t take security measure, you don’t need to configure the security for the adapter.

- **Network Authentication** - Select which mode the Wireless Adapter uses to authenticate to an access point. These modes are: Open System, Shared key, WPA-PSK, WPA2-PSK, WPA 802.1X, WPA2 802.1X, and WEP 802.1X.

- **Data encryption** - Select the corresponding data encryption for the authentication. These encryptions are: Disabled, WEP, TKIP and AES.

 **Note:**

- 1) Select different **authentications** and **data encryptions**, the security configuration is different.
  - 2) When you select channel manually, the available network authentication are Open System, Shared key and WPA-None.
  - 3) The RTWCU does not support WPA 802.1x authentication in Windows Vista, while the Windows Zero Config Tools may satisfy your need.
- **ASCII** - Select this option, you can enter any ASCII characters to compose the password.
  - **PASSPHRASE** - Select this option, you can enter the characters from 0~9 to compose the password.
  - **Key Index** - Select the index of the password.
  - **Network Key & Confirm network key** - The fields configure the network key. The two should be the same.
- **802.1x configure** - This configures the 802.1x security, it is available when you select the data encryption as WPA 802.1X, WPA2 802.1X or WEP 802.1X.
- **EAP TYPE** - Select the EAP type for the 802.1x configuration, the options are: GTC, TLS, LEAP, TTLS, PEAP.
  - **Tunnel** - Select the tunnel: MD5, GTC, TLS, and MSCHAP-V2. The option is necessary for the EAP type of TTLS and PEAP.
  - **Username** - Enter the username for authentication. The option is necessary for the EAP type of TTLS and PEAP.
  - **Identity** - Enter the identity for the authentication.
  - **Password** - Enter the password for the authentication. The option is necessary for the EAP type of LEAP, TTLS and PEAP.
  - **Certificate** - Select the certificate you apply.

## 1. Open System authentication

When you select the **Open System** as the authentication, the Disabled and WEP can be available for the data encryption. If you select **Disabled**, you don't need to configure any passwords. If you select **WEP**, you can configure the password as follows.

**For example:** If the wireless network takes Open System authentication, WEP data encryption, the password is the value of 0123456789. The index is 1.

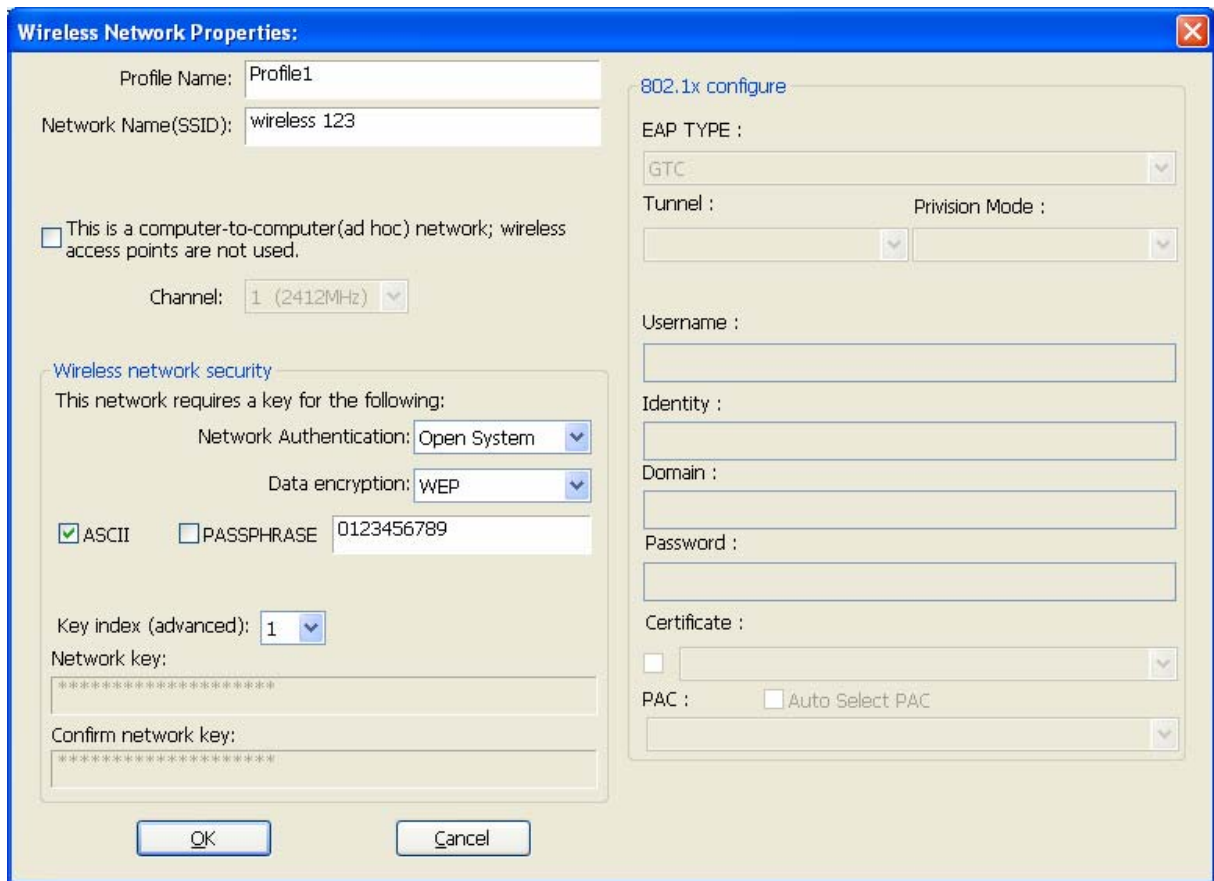


Figure 3-7

**Step 1:** Select the “Open System” as the Network Authentication.

**Step 2:** Select the “WEP” as Data encryption.

**Step 3:** Select the type for the password and you can select the ASCII or PASSPHRASE. For ASCII, you can enter any characters in the keyboard; For PASSPHRASE, you can enter the characters from 0 to 9.

**Step 4:** Enter “0123456789” as the password value.

**Step 5:** Select the Key index “1”, and click the **OK** to save the configuration.

## 2. Shared Key authentication

When you select the **Shared Key** as the authentication, the only available data encryption is WEP.

### Note:

The configuration for Shared Key authentication and Open System are similar, you can refer to the Open System authentication to configure it.

## 3. WPA-PSK authentication

When you select the **WPA-PSK** as the authentication, the available data encryptions are TKIP and AES. Please select the one according your need.

**For example:** If the wireless network takes WPA-PSK authentication, TKIP data encryption, the

network key is 0123456789. You can configure it for adapter as follows.

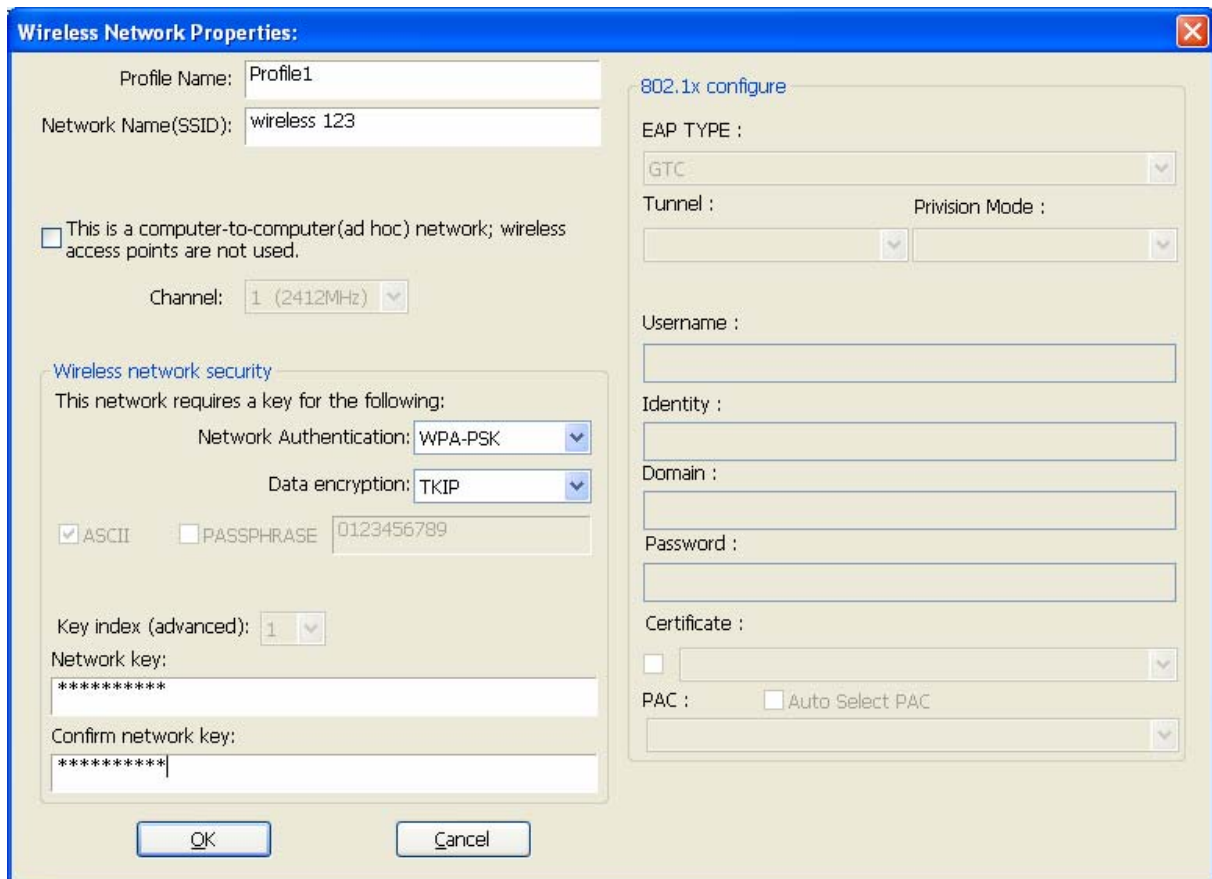


Figure 3-8

**Step 1:** Select the “WPA-PSK” as the Network Authentication.

**Step 2:** Select the “TKIP” as Data encryption.

**Step 3:** Enter the Network key and confirm it.

**Step 4:** Click the **OK** to save the configuration.

#### 4. WAP2-PSK authentication

When you select the **WPA2-PSK** as the authentication, the available data encryptions are TKIP and AES. Please select the one according your need.

#### Note:

The configuration for WPA2-PSK and WPA-PSK are similar, you can refer to WAP-PSK authentication to configure it.

#### 5. WPA 802.1x

When you select the **WPA 802.1x** as the authentication, the available data encryptions are TKIP and AES. For the authentication, you should configure the 802.1x security. Select the EAP Type and configure the corresponding options.

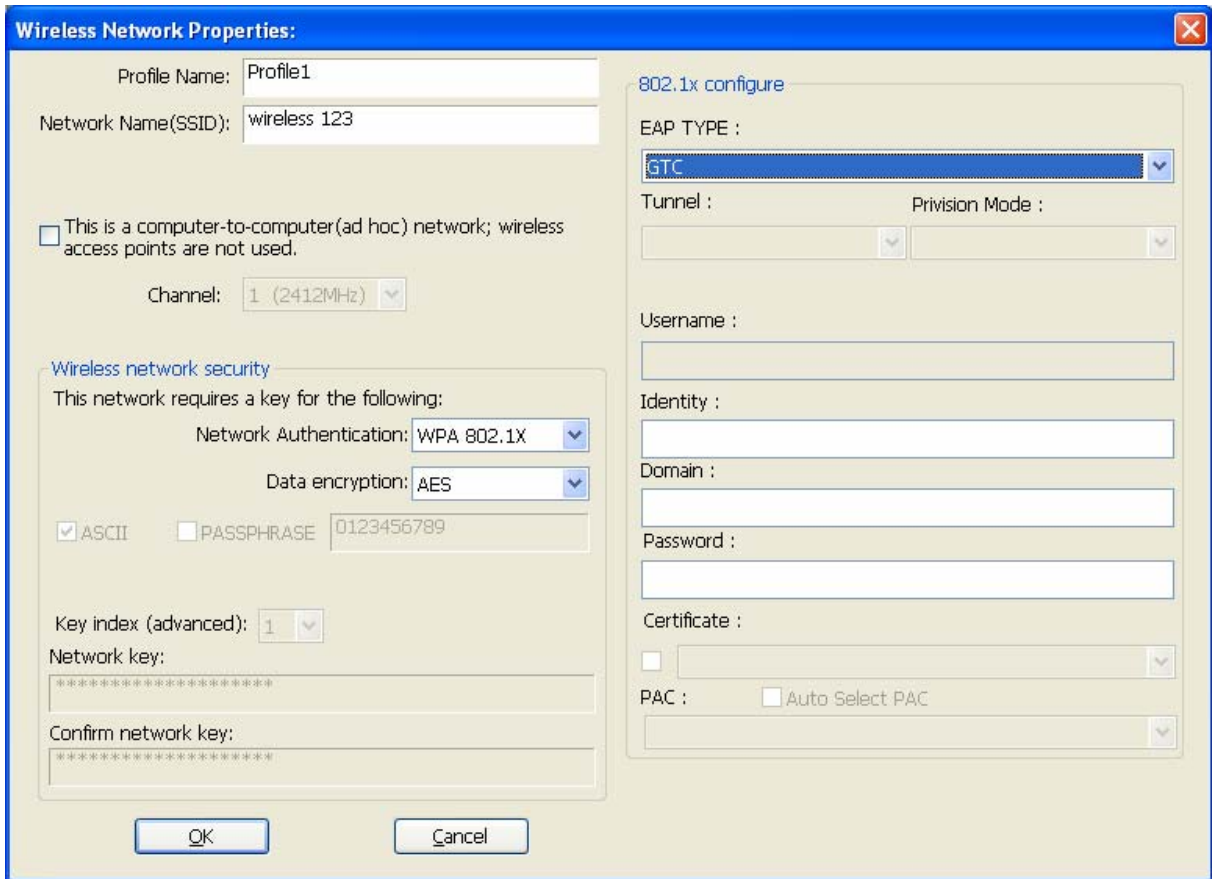


Figure 3-9

 **Note:**

Select different EAP types, the configuration are different.

## 6. WPA2 802.1x

When you select the **WPA2 802.1x** as the authentication, the available data encryptions are TKIP and AES. For the authentication, you should configure the 802.1x security.

 **Note:**

The configuration for WPA2 802.1x and WPA 802.1x are similar, you can refer to WPA 802.1x authentication to configure it.

## 7. WEP 802.1x

When you select the **WEP 802.1x** as the authentication, the only available data encryption is WEP.

 **Note:**

The configuration for WEP 802.1x authentication and WPA 802.1x are similar, you can refer to WPA 802.1x authentication to configure it.

### 3.2.2.2. Remove a configuration profile

Follow the steps below to delete a configuration profile.

**Step 1:** Go to the Profile tab (shown in Figure 3-10).

**Step 2:** Select the profile name in the Profiles List.

**Step 3:** Click **Remove**.

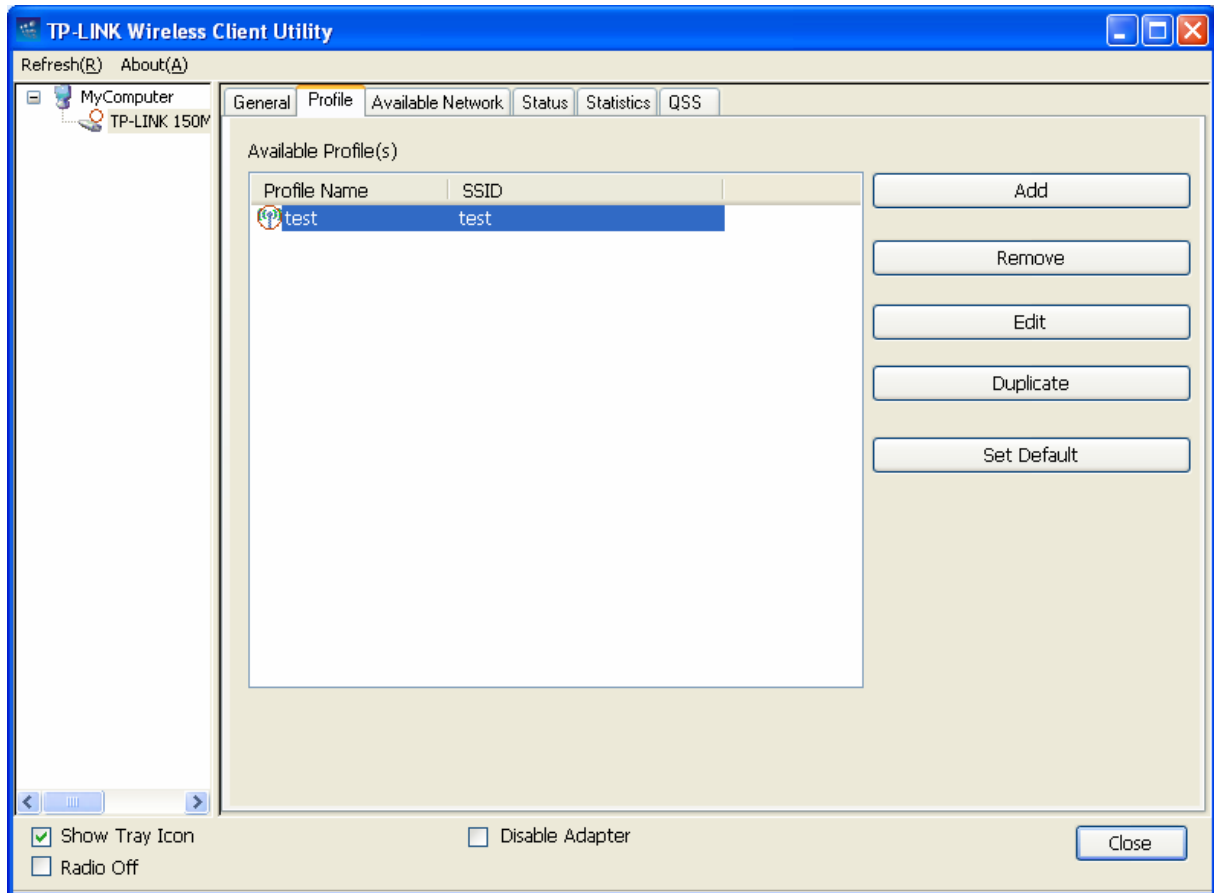


Figure 3-10

### 3.2.2.3. Duplicate a configuration file

Follow the steps below to change the name of a configuration profile.

**Step 1:** Go to the Profile tab (shown in Figure 3-10).

**Step 2:** Select the profile name in the Profiles List.

**Step 3:** Click **Duplicate**, and then enter the new name for the configuration profile.

### 3.2.2.4. Set default configuration profile

Follow the steps below to select a configuration profile as default. Once the adapter wants to connect a wireless network, it will select the default profile to connect firstly.

**Step 1:** Go to the Profile tab (shown in Figure 3-10).

**Step 2:** Select the profile name in the Profiles List.

**Step 3:** Click **Set Default**.



### 3.2.3 Available Network

Click the tab **Profile** as shown in Figure 3-11 to view the wireless networks. You can follow the steps below to access to a specific network.

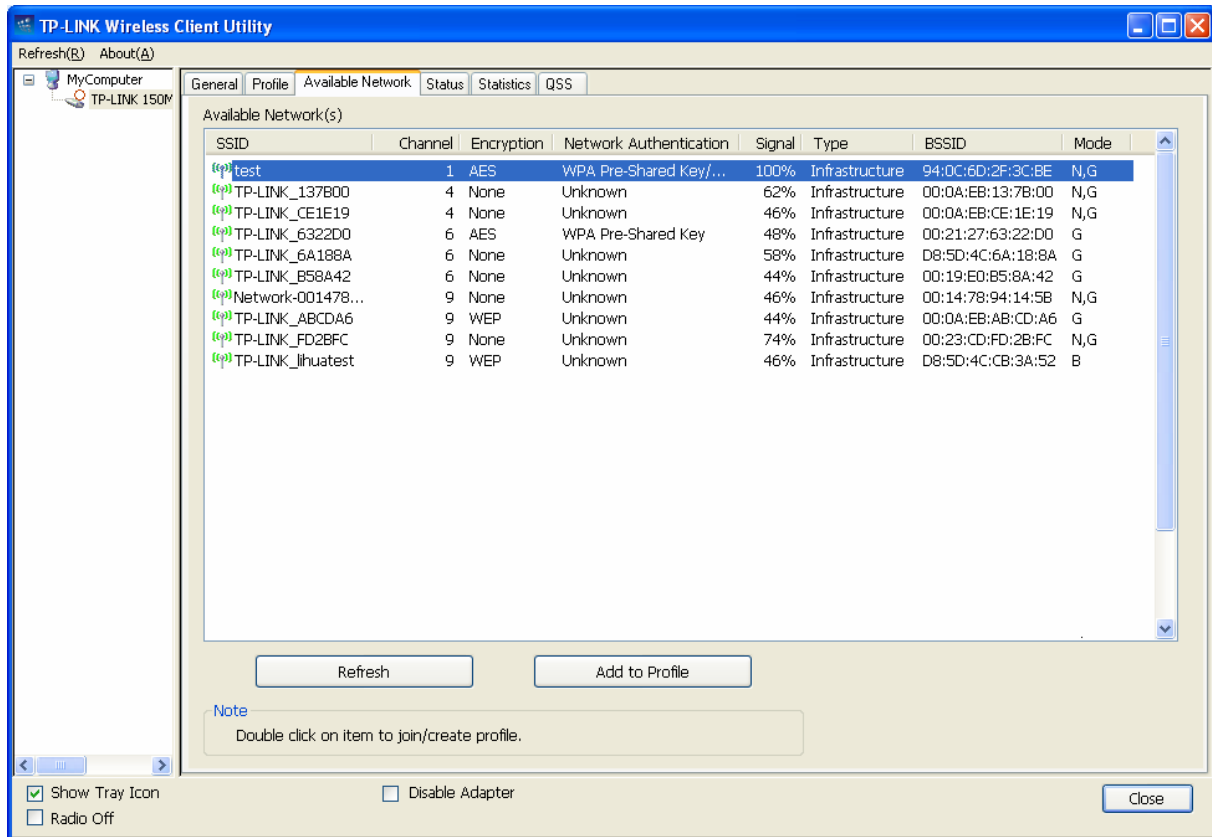


Figure 3-11

**Step 1:** Click **Refresh** to refresh the list at any time.

**Step 2:** Highlight a network name and click **Add to Profile** to connect to an available network. Fill in the Profile name and click **OK** to create the new configuration profile for that network.

### 3.2.4 Status

Click the tab **Status** as shown in Figure 3-12 to view the information about the connection.

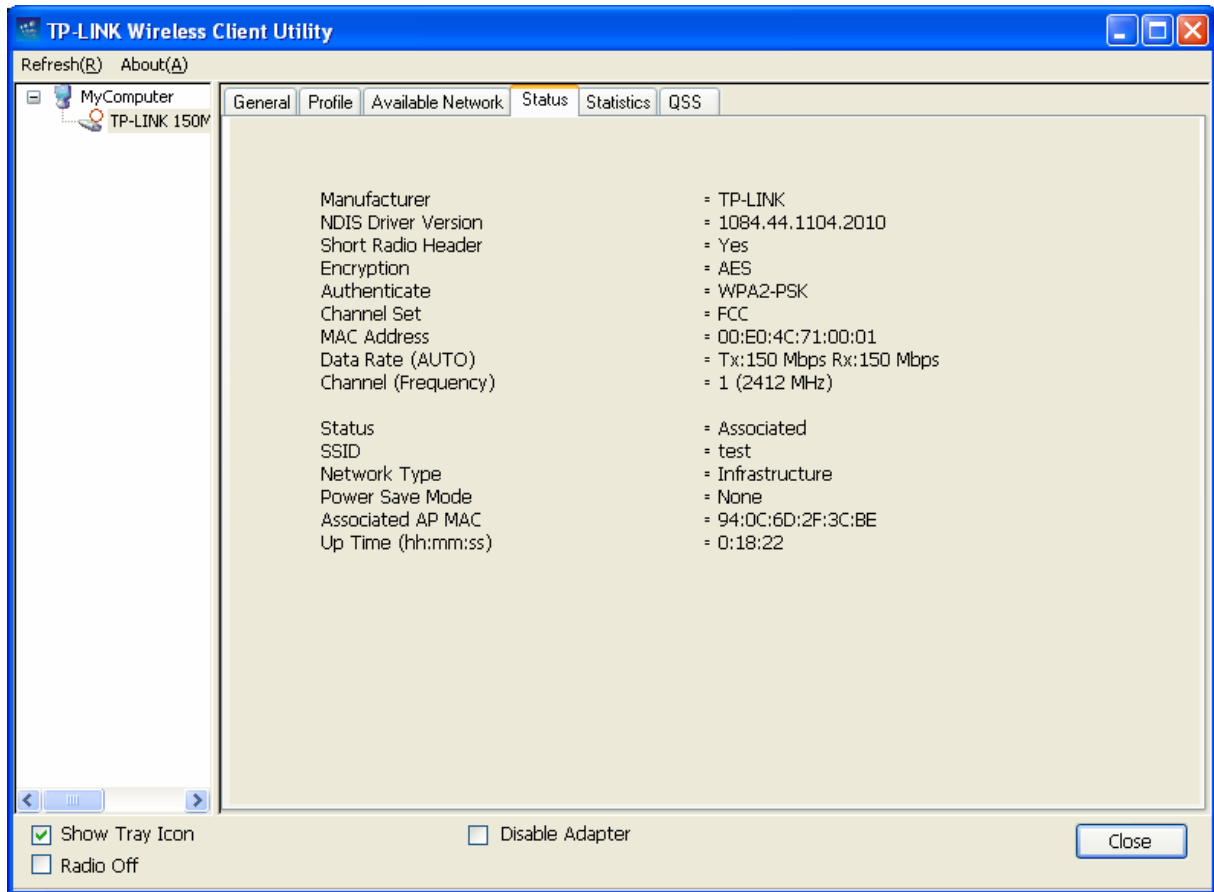


Figure 3-12

### 3.2.5 Statistics

Click the tab **Statistics** as shown in [错误！未找到引用源。](#) to view the traffic statistics about the connection. Click the **Reset** to refresh the information.

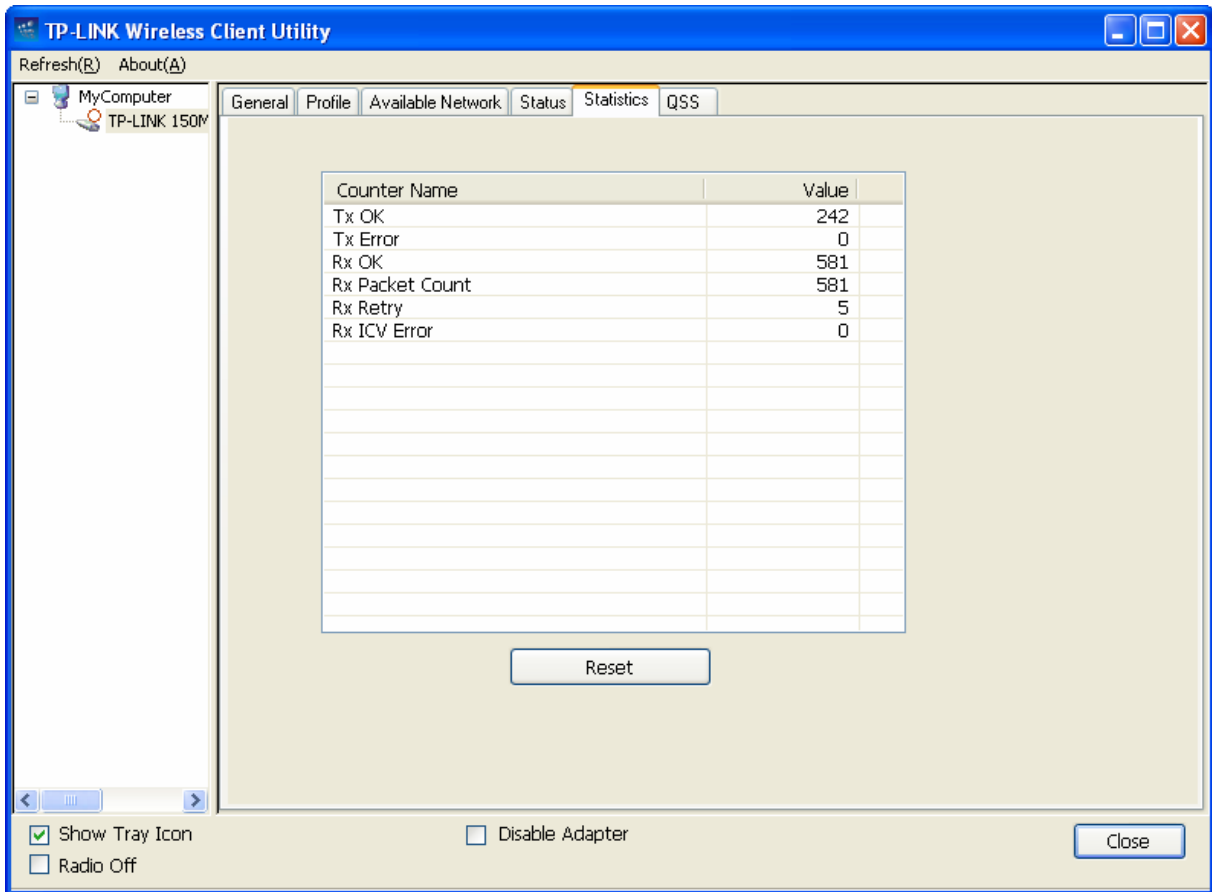


Figure 3-13

### 3.2.6 QSS

Click the tab **QSS** as shown in Figure 3-14, select different way to connect the adapter to the wireless network.

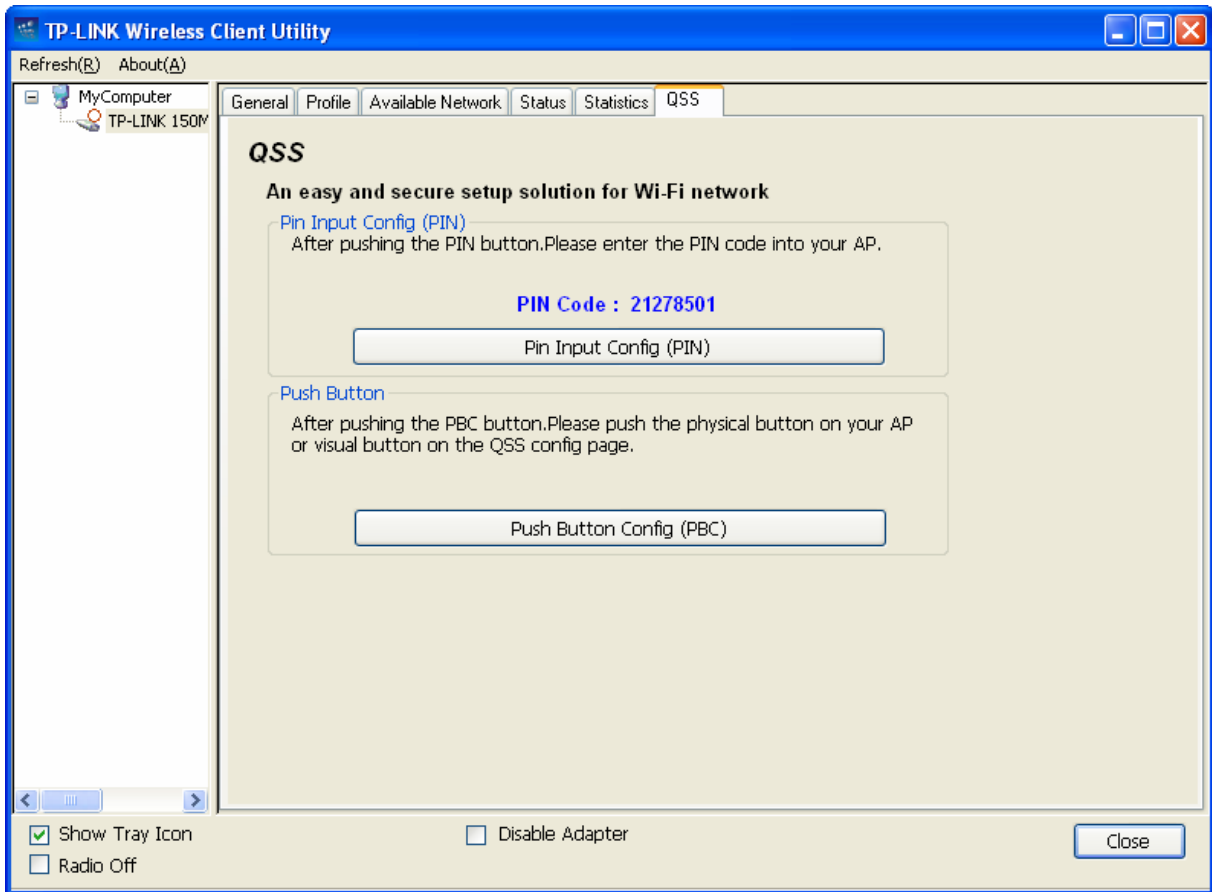


Figure 3-14

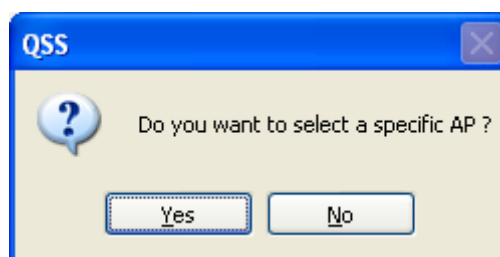
 **Note:**

The **QSS** (other brands may call it WPS) function takes effect only when both the adapter and the AP (the adapter wants to connect) support the QSS function. Or else, the adapter can't connect the AP.

### 3.2.6.1. PIN

**Step 1:** Select the **PIN** (shown in Figure 3-14).

**Step 2:** The following screen will pop up. Click **Yes** to continue.



**Step 3:** Click the **Refresh** button, and then the searched AP will display in the screen (shown in Figure 3-15). Select the AP name as you need, and click **Select** button.

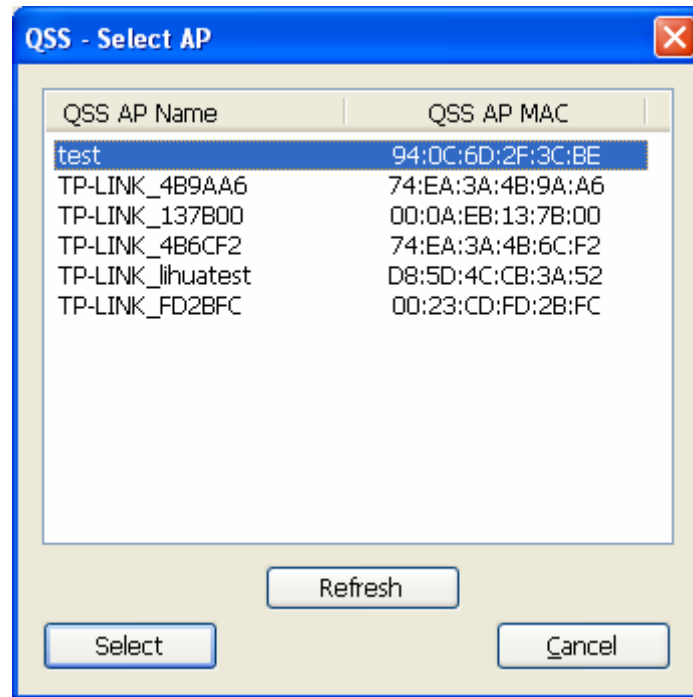


Figure 3-15

**Step 4:** After that, the PIN Code displays on the screen (shown in Figure 3-16). Now, you should enter the PIN code into your AP.

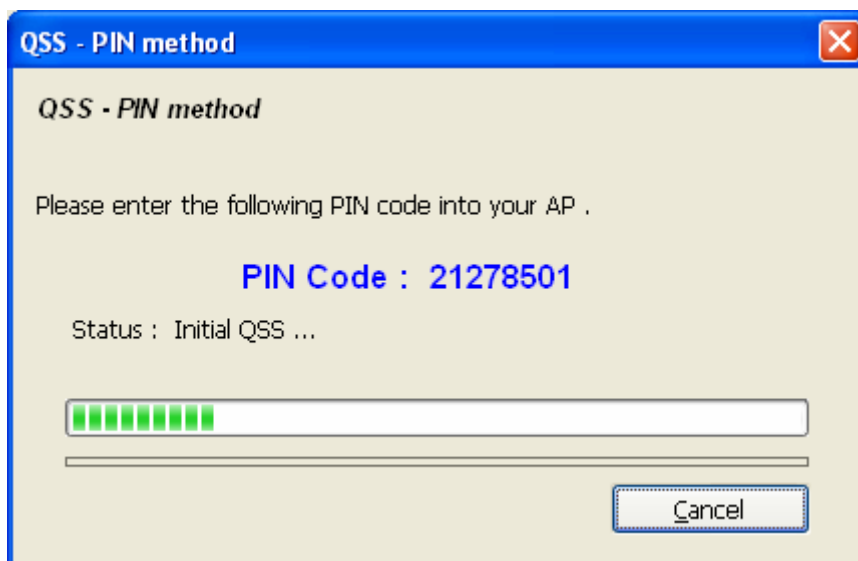


Figure 3-16

**Step 5:** Finally, the adapter will create the profile and connect to the AP automatically. You can see the status screen as follow. This is a new connection for Wi-Fi network.

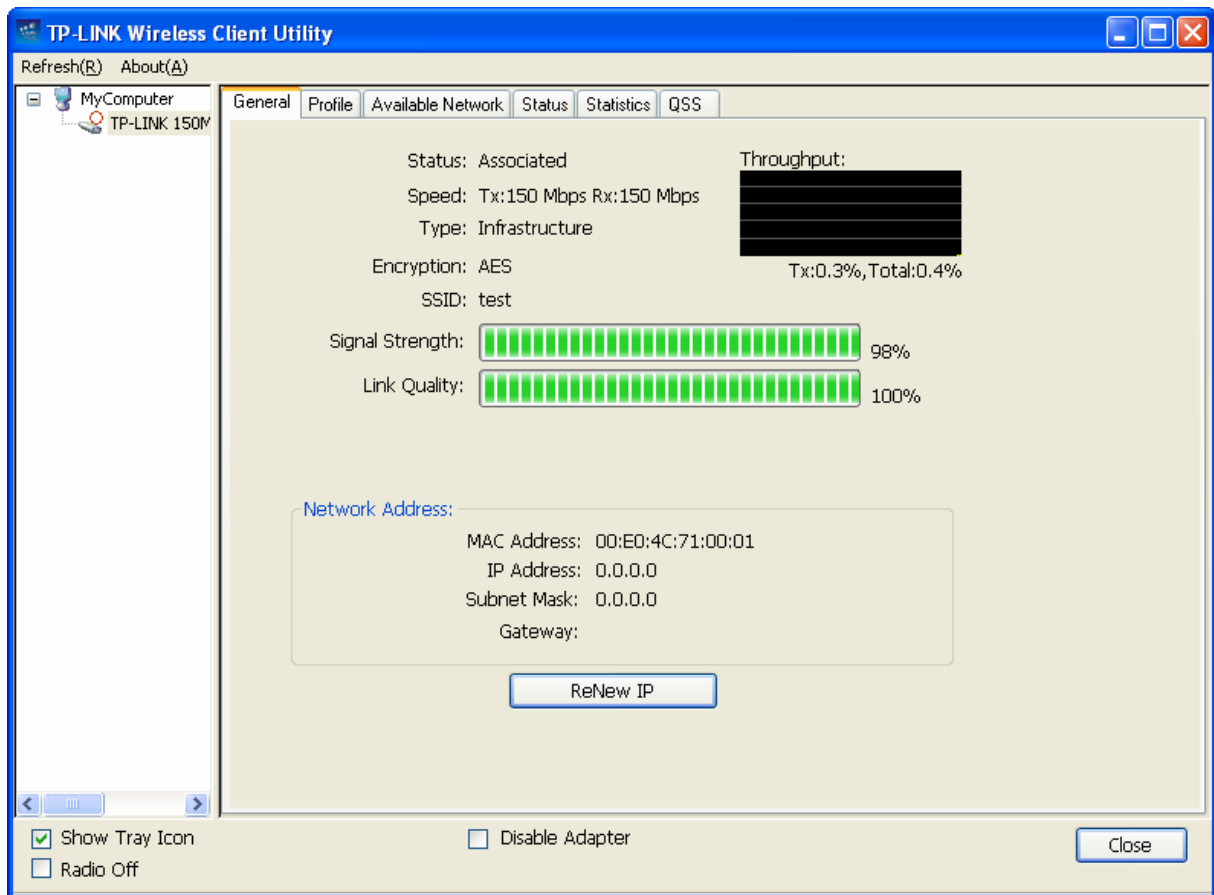
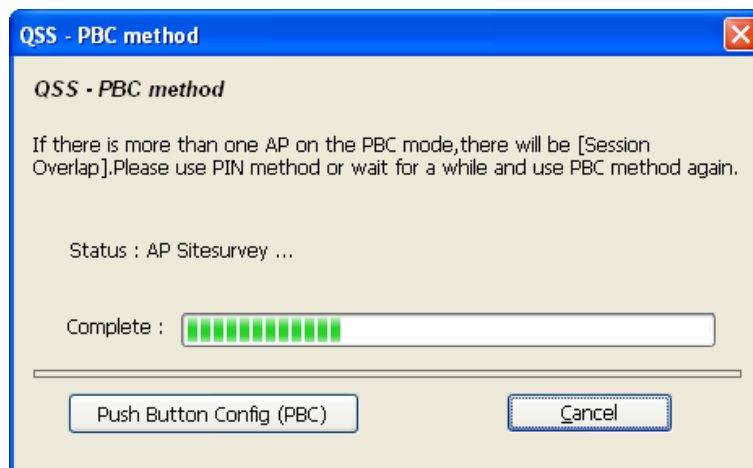


Figure 3-17

### 3.2.6.2. PBC Method

**Step 1:** Click **PBC** as shown in Figure 3-14 until the following screen pops up.



**Step 2:** Push the physical button on the AP.

**Step 3:** Finally, the adapter will create the profile and connect to the AP automatically.

## Appendix A: Specifications

<b>Normal</b>	
Interface	USB 2.0 Interface
Standards	IEEE802.11b; IEEE802.11g; IEEE802.11n;
Operating System	Windows XP / Windows Vista / Windows 7
Radio Data Rate	11b: 1/2/5.5/11Mbps 11g: 6/9/12/18/24/36/48/54Mbps 11n: Up to 150Mbps
Modulation	11b: CCK,QPSK,BPSK; 11g: OFDM; 11n: QPSK, BPSK, 16-QAM, 64-QAM;
Media Access Protocol	CSMA/CA with ACK
Data Security	WPA/WPA2; 64/128-bit WEP; TKIP/AES
Frequency Band*	2.4 ~ 2.4835GHz
Spread Spectrum	Direct Sequence Spread Spectrum (DSSS)
Safety & Emissions	FCC, CE
<b>Environmental and Physical</b>	
Operating Temp.	0°C ~ 40°C (32°F ~104°F)
Storage Temp.	-40°C ~ 70°C (-40°F ~158°F)
Working Humidity	10% ~ 90% RH, Non-condensing
Storage Humidity	5% ~ 90% RH, Non-condensing

\* For the products sold in the USA, only channel 1~11 is available to choose according to American Frequency Rules.

## Appendix B: Glossary

- **802.11b** - The 802.11b standard specifies a wireless product networking at 11 Mbps using direct-sequence spread-spectrum (DSSS) technology and operating in the unlicensed radio spectrum at 2.4GHz, and WEP encryption for security. 802.11b networks are also referred to as Wi-Fi networks.
- **802.11g** - specification for wireless networking at 54 Mbps using direct-sequence spread-spectrum (DSSS) technology, using OFDM modulation and operating in the unlicensed radio spectrum at 2.4GHz, and backward compatibility with IEEE 802.11b devices, and WEP encryption for security.
- **802.11n** - 802.11n builds upon previous 802.11 standards by adding MIMO (multiple-input multiple-output). MIMO uses multiple transmitter and receiver antennas to allow for increased data throughput via spatial multiplexing and increased range by exploiting the spatial diversity, perhaps through coding schemes like Alamouti coding. The Enhanced Wireless Consortium (EWC)<sup>[3]</sup> was formed to help accelerate the IEEE 802.11n development process and promote a technology specification for interoperability of next-generation wireless local area networking (WLAN) products.
- **Ad-hoc Network** - An ad-hoc network is a group of computers, each with a Wireless Adapter, connected as an independent 802.11 wireless LAN. Ad-hoc wireless computers operate on a peer-to-peer basis, communicating directly with each other without the use of an access point. Ad-hoc mode is also referred to as an Independent Basic Service Set (IBSS) or as peer-to-peer mode, and is useful at a departmental scale or SOHO operation.
- **DSSS - (Direct-Sequence Spread Spectrum)** - DSSS generates a redundant bit pattern for all data transmitted. This bit pattern is called a chip (or chipping code). Even if one or more bits in the chip are damaged during transmission, statistical techniques embedded in the receiver can recover the original data without the need of retransmission. To an unintended receiver, DSSS appears as low power wideband noise and is rejected (ignored) by most narrowband receivers. However, to an intended receiver (i.e. another wireless LAN endpoint), the DSSS signal is recognized as the only valid signal, and interference is inherently rejected (ignored).
- **FHSS - (Frequency Hopping Spread Spectrum)** - FHSS continuously changes (hops) the carrier frequency of a conventional carrier several times per second according to a pseudo-random set of channels. Because a fixed frequency is not used, and only the transmitter and receiver know the hop patterns, interception of FHSS is extremely difficult.
- **Infrastructure Network** - An infrastructure network is a group of computers or other devices, each with a Wireless Adapter, connected as an 802.11 wireless LAN. In infrastructure mode, the wireless devices communicate with each other and to a wired network by first going through an access point. An infrastructure wireless network connected to a wired network is referred to as a Basic Service Set (BSS). A set of two or more BSS in a single network is referred to as an Extended Service Set (ESS). Infrastructure mode is useful at a corporation scale, or when it is necessary to connect the wired and wireless networks.



- **Spread Spectrum** - Spread Spectrum technology is a wideband radio frequency technique developed by the military for use in reliable, secure, mission-critical communications systems. It is designed to trade off bandwidth efficiency for reliability, integrity, and security. In other words, more bandwidth is consumed than in the case of narrowband transmission, but the trade off produces a signal that is, in effect, louder and thus easier to detect, provided that the receiver knows the parameters of the spread-spectrum signal being broadcast. If a receiver is not tuned to the right frequency, a spread-spectrum signal looks like background noise. There are two main alternatives, Direct Sequence Spread Spectrum (DSSS) and Frequency Hopping Spread Spectrum (FHSS).
- **SSID** - A **S**ervice **S**et **I**dentification is a thirty-two character (maximum) alphanumeric key identifying a wireless local area network. For the wireless devices in a network to communicate with each other, all devices must be configured with the same SSID. This is typically the configuration parameter for a wireless PC card. It corresponds to the ESSID in the wireless Access Point and to the wireless network name. See *also* Wireless Network Name and ESSID.
- **WEP** - (**W**ired **E**quivalent **P**rivacy) - A data privacy mechanism based on a 64-bit or 128-bit or 152-bit shared key algorithm, as described in the IEEE 802.11 standard. To gain access to a WEP network, you must know the key. The key is a string of characters that you create. When using WEP, you must determine the level of encryption. The type of encryption determines the key length. 128-bit encryption requires a longer key than 64-bit encryption. Keys are defined by entering in a string in HEX (hexadecimal - using characters 0-9, A-F) or ASCII (American Standard Code for Information Interchange – alphanumeric characters) format. ASCII format is provided so you can enter a string that is easier to remember. The ASCII string is converted to HEX for use over the network. Four keys can be defined so that you can change keys easily.
- **Wi-Fi** - A trade name for the 802.11b wireless networking standard, given by the Wireless Ethernet Compatibility Alliance (WECA, see <http://www.wi-fi.net>), an industry standards group promoting interoperability among 802.11b devices.
- **WLAN** - (**W**ireless **L**ocal **A**rea **N**etwork) - A group of computers and associated devices communicate with each other wirelessly, which network serving users are limited in a local area.
- **WPA** - (**W**i-Fi **P**rotected **A**ccess) - A wireless security protocol use TKIP (Temporal Key Integrity Protocol) encryption, which can be used in conjunction with a RADIUS server.