

TP-LINK®

User Guide

TL-WPS510U

Pocket-Sized Wireless N Print Server



REV4.0.0

1910010986

COPYRIGHT & TRADEMARKS

Specifications are subject to change without notice. **TP-LINK®** is a registered trademark of TP-LINK TECHNOLOGIES CO., LTD. Other brands and product names are trademarks or registered trademarks of their respective holders.

No part of the specifications may be reproduced in any form or by any means or used to make any derivative such as translation, transformation, or adaptation without permission from TP-LINK TECHNOLOGIES CO., LTD. Copyright © 2014 TP-LINK TECHNOLOGIES CO., LTD. All rights reserved.

<http://www.tp-link.com>

FCC STATEMENT



This equipment has been tested and found to comply with the limits for a Class B digital device, pursuant to part 15 of the FCC Rules. These limits are designed to provide reasonable protection against harmful interference in a residential installation. This equipment generates, uses and can radiate radio frequency energy and, if not installed and used in accordance with the instructions, may cause harmful interference to radio communications. However, there is no guarantee that interference will not occur in a particular installation. If this equipment does cause harmful interference to radio or television reception, which can be determined by turning the equipment off and on, the user is encouraged to try to correct the interference by one or more of the following measures:

- Reorient or relocate the receiving antenna.
- Increase the separation between the equipment and receiver.
- Connect the equipment into an outlet on a circuit different from that to which the receiver is connected.
- Consult the dealer or an experienced radio/ TV technician for help.

This device complies with part 15 of the FCC Rules. Operation is subject to the following two conditions:

- 1) This device may not cause harmful interference.
- 2) This device must accept any interference received, including interference that may cause undesired operation.

Any changes or modifications not expressly approved by the party responsible for compliance could void the user's authority to operate the equipment.

Note: The manufacturer is not responsible for any radio or TV interference caused by unauthorized modifications to this equipment. Such modifications could void the user's authority to operate the equipment.

FCC RF Radiation Exposure Statement

This equipment complies with FCC RF radiation exposure limits set forth for an uncontrolled environment. This device and its antenna must not be co-located or operating in conjunction with any other antenna or transmitter.

“To comply with FCC RF exposure compliance requirements, this grant is applicable to only Mobile Configurations. The antennas used for this transmitter must be installed to provide a separation distance of at least 20 cm from all persons and must not be co-located or operating in conjunction with any other antenna or transmitter.”

CE Mark Warning

CE 1588

This is a class B product. In a domestic environment, this product may cause radio interference, in which case the user may be required to take adequate measures.

Canadian Compliance Statement

This device complies with Industry Canada license-exempt RSS standard(s). Operation is subject to the following two conditions:

- (1) This device may not cause interference, and
- (2) This device must accept any interference, including interference that may cause undesired operation of the device.

Cet appareil est conforme aux norms CNR exemptes de licence d'Industrie Canada. Le fonctionnement est soumis aux deux conditions suivantes:

- (1) cet appareil ne doit pas provoquer d'interférences et
- (2) cet appareil doit accepter toute interférence, y compris celles susceptibles de provoquer un fonctionnement non souhaité de l'appareil.

This device has been designed to operate with the antennas listed below, and having a maximum gain of 3 dBi. Antennas not included in this list or having a gain greater than 3 dBi are strictly prohibited for use with this device. The required antenna impedance is 50 ohms.

Industry Canada Statement

Complies with the Canadian ICES-003 Class B specifications.

Cet appareil numérique de la classe B est conforme à la norme NMB-003 du Canada.

This device complies with RSS 210 of Industry Canada. This Class B device meets all the requirements of the Canadian interference-causing equipment regulations.

Cet appareil numérique de la Classe B respecte toutes les exigences du Règlement sur le matériel brouilleur du Canada.

Korea Warning Statements

당해 무선설비는 운용중 전파혼신 가능성이 있음.

NCC Notice & BSMI Notice

注意！

依據 低功率電波輻射性電機管理辦法

第十二條 經型式認證合格之低功率射頻電機，非經許可，公司、商號或使用者均不得擅自變更頻率、加大功率或變更原設計之特性或功能。

第十四條 低功率射頻電機之使用不得影響飛航安全及干擾合法通行；經發現有干擾現象時，應立即停用，並改善至無干擾時方得繼續使用。前項合法通信，指依電信規定作業之無線電信。低功率射頻電機需忍受合法通信或工業、科學以及醫療用電波輻射性電機設備之干擾。

減少電磁波影響，請妥適使用。



Продукт сертифіковано згідно с правилами системи УкрСЕПРО на відповідність вимогам нормативних документів та вимогам, що передбачені чинними законодавчими актами України.



Safety Information

- When product has power button, the power button is one of the way to shut off the product; when there is no power button, the only way to completely shut off power is to disconnect the product or the power adapter from the power source.
- Don't disassemble the product, or make repairs yourself. You run the risk of electric shock and voiding the limited warranty. If you need service, please contact us.
- Avoid water and wet locations.

This product can be used in the following countries:

AT	BG	BY	CA	CZ	DE	DK	EE
ES	FI	FR	GB	GR	HU	IE	IT
LT	LV	MT	NL	NO	PL	PT	RO
RU	SE	SK	TR	UA			

DECLARATION OF CONFORMITY

For the following equipment:

Product Description: **Pocket-Sized Wireless N Print Server**

Model No.: **TL-WPS510U**

Trademark: **TP-LINK**

We declare under our own responsibility that the above products satisfy all the technical regulations applicable to the product within the scope of Council Directives:

Directives 1999/5/EC, Directives 2004/108/EC, Directives 2006/95/EC, Directives 1999/519/EC, Directives 2011/65/EU

The above product is in conformity with the following standards or other normative documents

EN 300 328 V1.7.1: 2006

EN 301 489-1 V1.9.2:2011& EN 301 489-17 V2.2.1:2012

EN 55022:2010

EN 55024:2010

EN 61000-3-2:2006+A1:2009+A2:2009

EN 61000-3-3:2008

EN 60950-1:2006+A11: 2009+A1:2010+A12:2011

EN 62311:2008

The product carries the CE Mark:

CE 1588

Person is responsible for making this declaration:



Yang Hongliang
Product Manager of International Business

Date of issue: 2014

TP-LINK TECHNOLOGIES CO., LTD.

Building 24 (floors 1, 3, 4, 5), and 28 (floors 1-4) Central Science and Technology Park,
Shennan Rd, Nanshan, Shenzhen, China

CONTENTS

Package Contents	1
Chapter 1. Introduction.....	2
1.1 Product Overview	2
1.2 Features	2
1.3 LED Indicator.....	2
1.4 Factory Default Settings	3
Chapter 2. Hardware Installation	4
2.1 Preparation	4
2.2 Typology.....	4
2.3 Connection	4
Chapter 3. How to Configure the Print Server	6
3.1 Using Utility in Windows XP/Vista/7/8	6
3.1.1 Setting up a Print Server Network.....	6
3.1.2 Joining the Print Server Network.....	12
3.2 Using Web Management Page in Windows XP/Vista/7/8	16
3.2.1 Setting up a Print Server Network.....	16
3.2.2 Joining the Print Server Network.....	26
3.3 Using Web Management Page in MAC OS.....	27
3.3.1 Setting up a Print Server Network.....	27
3.3.2 Printer Installation in MAC OS	35
3.3.3 Joining the Print Server Network.....	38
Chapter 4. More Configuration for the Print Server	39
4.1 Login.....	39
4.2 Status	41
4.2.1 System	41
4.2.2 Printer.....	42
4.2.3 Wireless.....	43
4.2.4 TCP/IP.....	43
4.3 Setup.....	44
4.3.1 System Setup	44
4.3.2 Wireless Setup	46
4.3.3 TCP/IP Setup	47
4.4 Misc.....	48

4.4.1	Factory Default.....	48
4.4.2	Firmware Upgrade.....	49
4.5	Restart.....	50
Appendix A: How to Reset the Print Server		51
Appendix B: Frequently Asked Questions		52
Appendix C: Printer Installation in Windows OS		54
C-1	If You Have Installed a Printer Before.....	54
C-2	If You Never Install a Printer Before	59
Appendix D: Additional Installation Instructions.....		65

Package Contents

- One TL-WPS510U Pocket-Sized Wireless N Print Server
- One external AC power adapter
- One USB cable
- One Quick Installation Guide
- One Resource CD containing Utility and User Guide

Chapter 1. Introduction

1.1 Product Overview

The external print servers enhance capability by letting you place your printers at convenient locations directly on the Ethernet network, and by increasing network printer performance and management. Please note that the print server does not support printing with host-based printers, e.g. CAPT, GDI, and PPA.

1.2 Features

- Travel size design, small enough to take on the road
- Compatible with IEEE 802.11n/g/b
- Wireless N speed up to 150Mbps
- One USB 2.0 High Speed port(PID1)
- One Built-in Reset Button

1.3 LED Indicator



LED	Status	Indication
Power	On (Red)	The Print Server's power is on.
	Off	The Print Server's power is off.
WLAN	Blinking (Green)	The Print Server is transmitting data via wireless connectivity.
	Off	The Print Server is not connected to any router/access point, or there is no data transmitted via wireless connectivity.

1.4 Factory Default Settings

- Username: admin
- Password: admin
- Wireless Mode: Ad-Hoc (Peer-to-Peer)
- Channel: 1
- SSID: WLAN-PS
- Encryption: None
- IP Address: 192.168.0.10
- Subnet Mask: 255.255.255.0
- DHCP Client: off

Chapter 2. Hardware Installation

2.1 Preparation

Before you start, you should prepare the following items:

- One USB Printer (non-GDI/CAPT)
- One 802.11n Access Point/Router
- One Computer with Wireless Adapter installed

 **Note:**

Please make sure the computer has been successfully installed the printer driver, i.e., when correctly connected to the printer, the computer can print without other configurations.

2.2 Typology

In this topology, the wireless router is the center of the wireless network. Every host and TL-WPS510U will communicate with the wireless router. The hosts communicate with TL-WPS510U via the wireless router.



Figure 2-1 Topology

2.3 Connection

Follow the instructions below to install the print server.

1. Power off the printer.
2. Connect the print server to your printer with the provided USB cable.
3. Power on the printer.

4. Power on the print server.
5. Wait 40 seconds for the print server's Power On Self Test (POST).

Chapter 3. How to Configure the Print Server

3.1 Using Utility in Windows XP/Vista/7/8

3.1.1 Setting up a Print Server Network

To connect to the print server using PSWizard, the configurations for Windows XP, Windows Vista, Windows 7 and Windows 8 are similar. Here we take Windows 7 for example.

1. Insert the setup CD into your CD-drive. The autorun program will be started as shown in Figure 3-1. Select the model (TL-WPS510U) of your print sever.



Figure 3-1

 **Note:**

If you don't have a CD-ROM, you can log onto our website <http://www.tp-link.com/en/support/download> to download the setup wizard PrintServer_Setup_Wizard.

2. Choose **Easy Setup** Wizard.



Figure 3-2

3. Then a prompt will appear as shown in Figure 3-3. Make sure you have installed the printer driver, and click **Continue**.

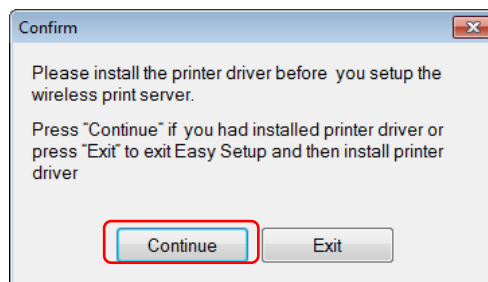


Figure 3-3

- Then the Wireless Print Server Setup Wizard will appear as shown in Figure 3-4. Select the wireless router to connect to the print server and click “**Next**”.

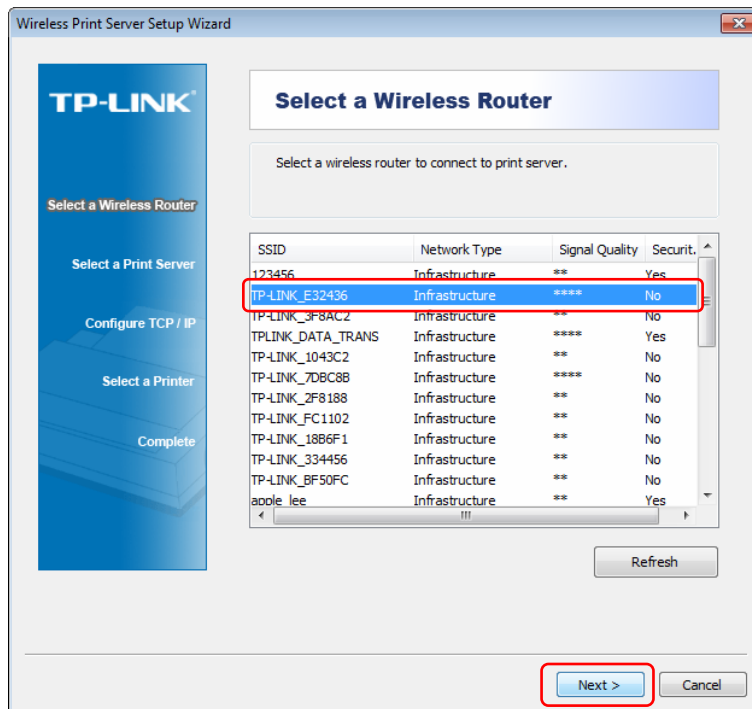


Figure 3-4

Note:

Please make sure your router’s DHCP feature is enabled.

- If your wireless router is secured, the **Input Key** window will prompt. Enter and confirm the network key. Click “**Connect**”.

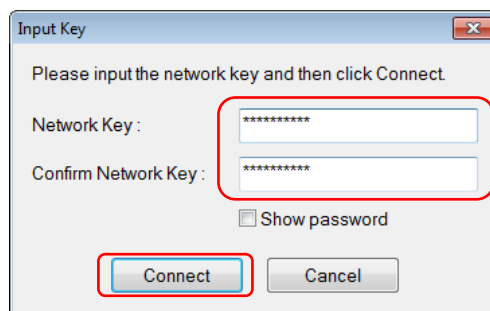


Figure 3-5

- On the **Select a Print Server** screen as shown in Figure 3-6, select the print server and click **Next**.

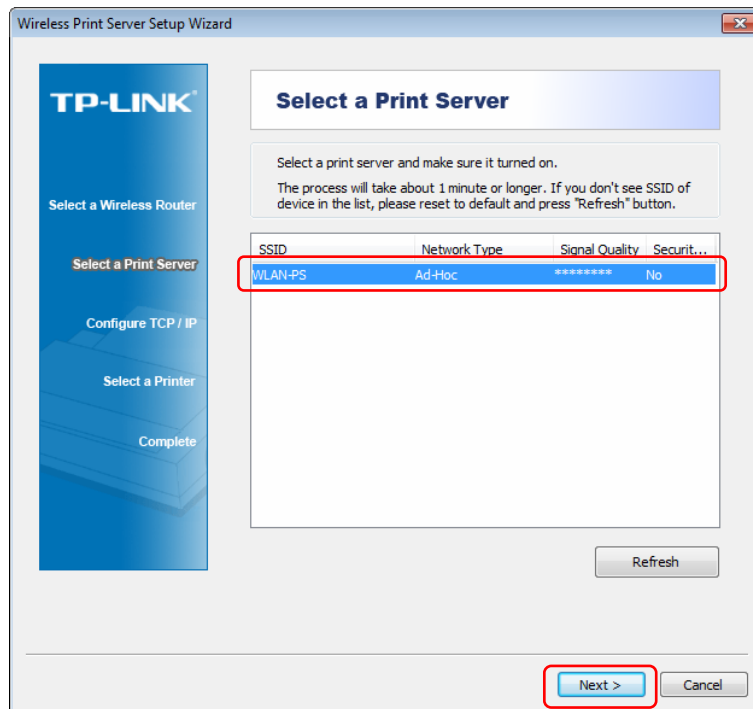


Figure 3-6

Note:

If you can't find the print server in the list, please check whether its power LED is on (red). If the power LED is on and the print server still doesn't appear, please reset it. For the reset method, please refer to [Appendix A: How to Reset the Print Server](#).

- On the TCP/IP Settings page as shown in Figure 3-7, select “Obtain an IP address automatically (use DHCP)” and then click “Next”.

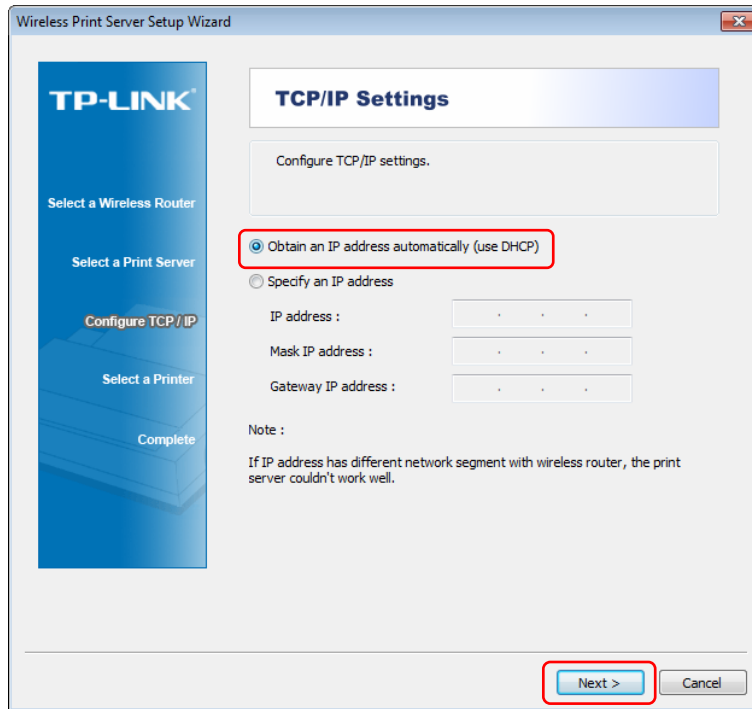


Figure 3-7

- Then a prompt will appear to ask whether you have installed printer driver before. Click “YES”.

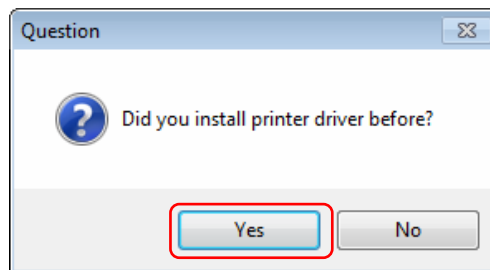


Figure 3-8

- Then the **Select a Printer** page will appear. Select the printer you've installed the printer driver, and click **Next**.

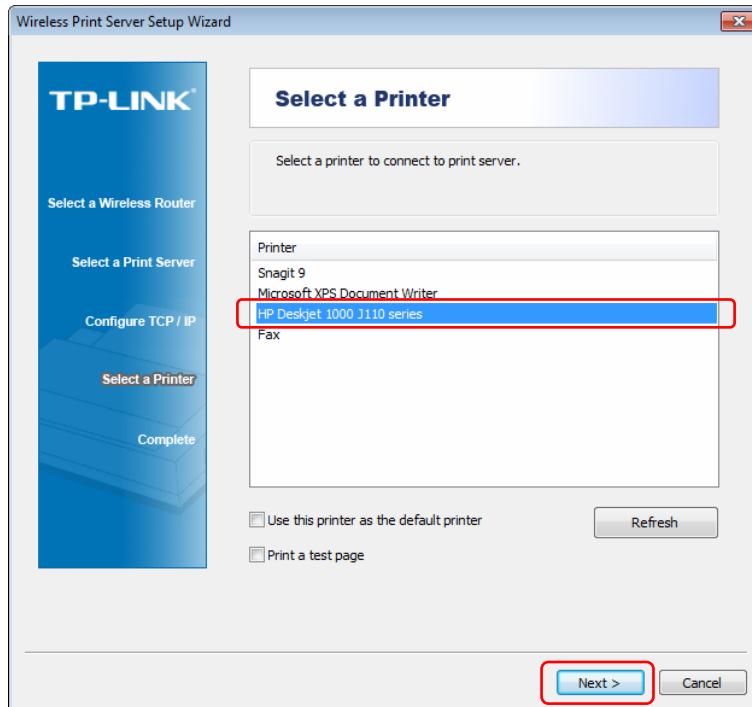


Figure 3-9

- Click **Finish** to complete the configuration. Now the computer can use the printer via the print server.

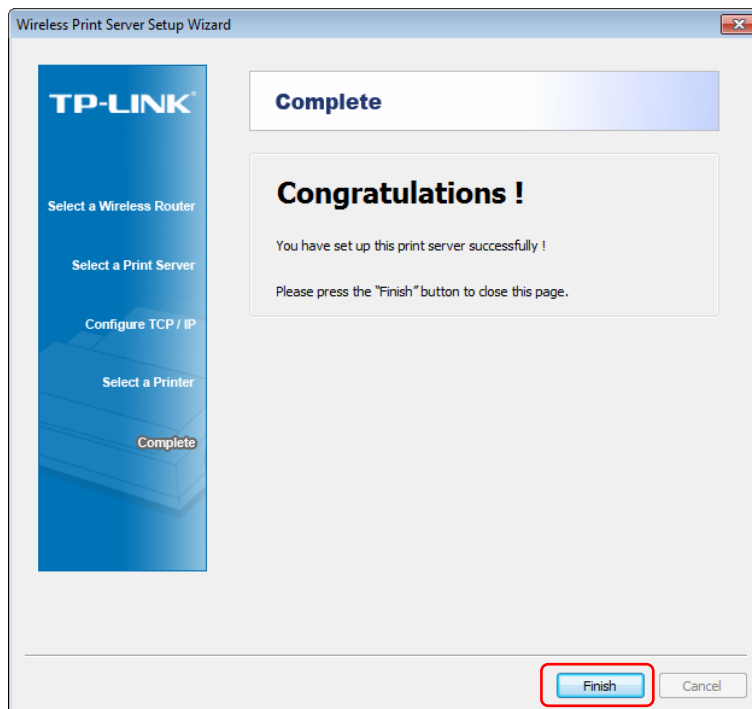


Figure 3-10

3.1.2 Joining the Print Server Network

If another computer wants to join the print server network to share the printer, please follow the steps below.

Note:

Please make sure the computer has been successfully installed the printer driver, i.e., when correctly connected to the printer, the computer can print without other configurations.

1. Connect the computer to your router or access point. For details, please refer to your router's installation guide.
2. Insert the setup CD into your CD-drive. The autorun program will be started as shown in Figure 3-11. Select the model (**TL-WPS510U**) of your print sever.



Figure 3-11

Note:

If you don't have a CD-ROM, you can log onto our website <http://www.tp-link.com/en/support/download> to download the setup wizard PrintServer_Setup_Wizard.

3. Choose **Setup Wizard**.



Figure 3-12

4. The **Welcome** page will appear. Click “**Next**”.

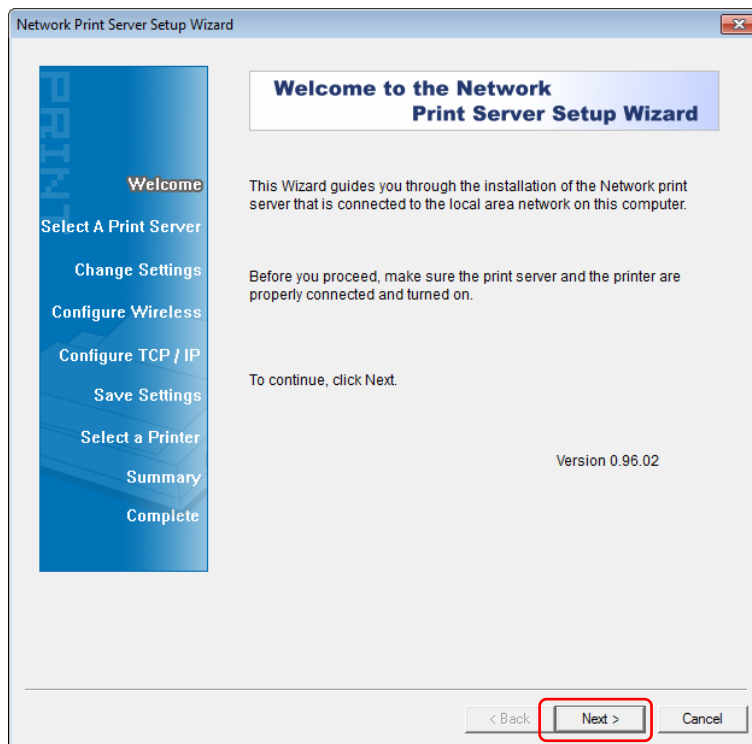


Figure 3-13

- On the **Select A Print server** page, select your print server and click **“Next”**.

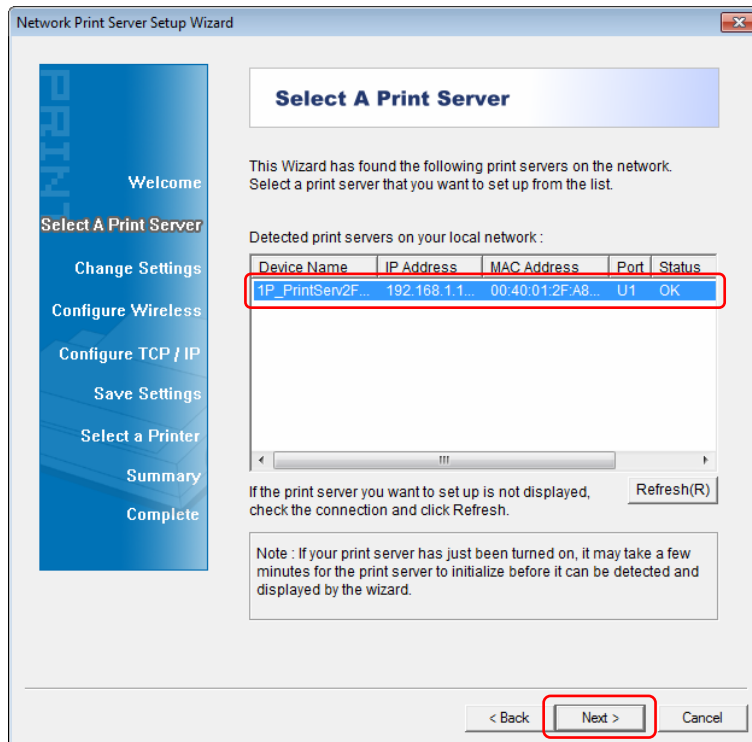


Figure 3-14

- On the **Change Settings** page, select **“No, I don’t want to change settings. (O)”** and click **“Next”**.

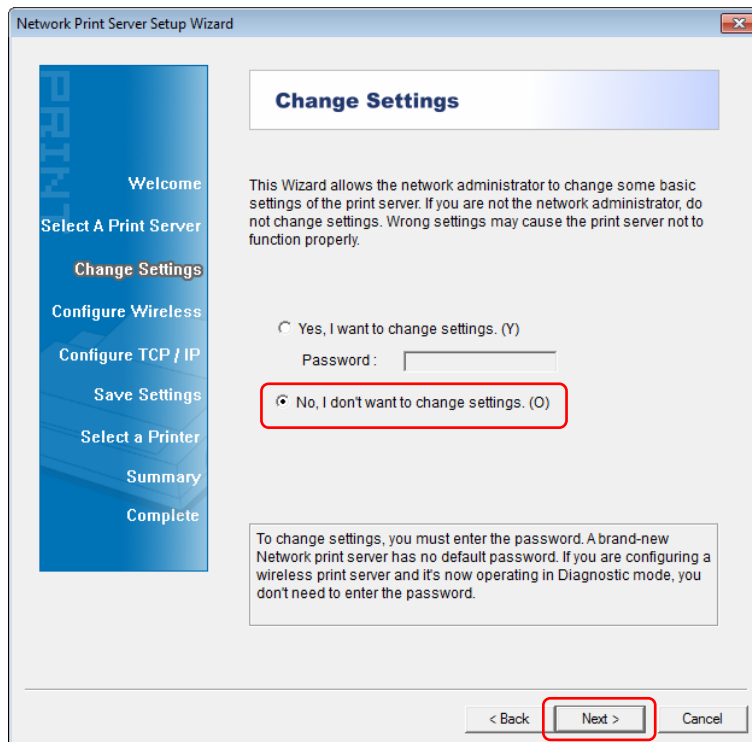


Figure 3-15

7. On the **Summary** page, click “Next”.

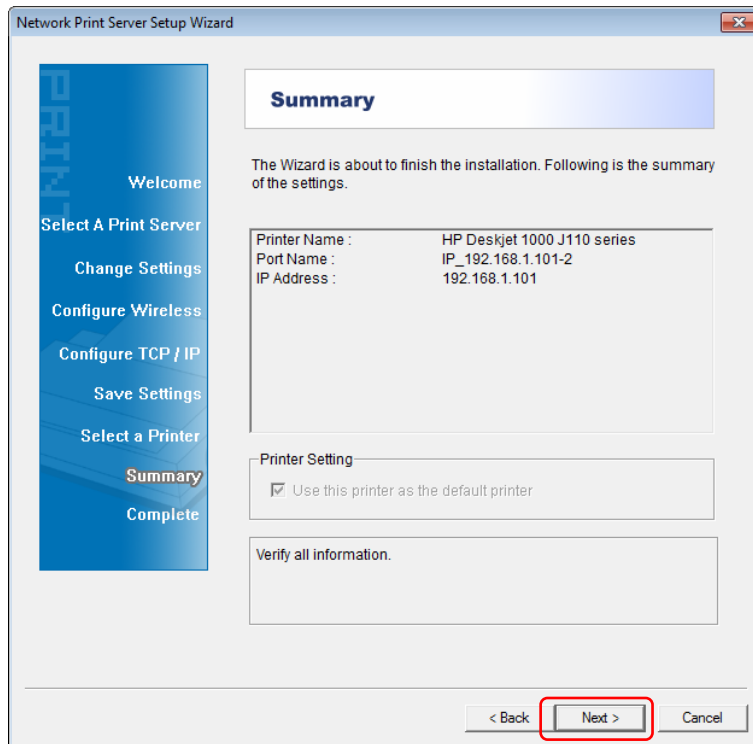


Figure 3-16

8. Click “Finish” on the **Installation Complete** page.

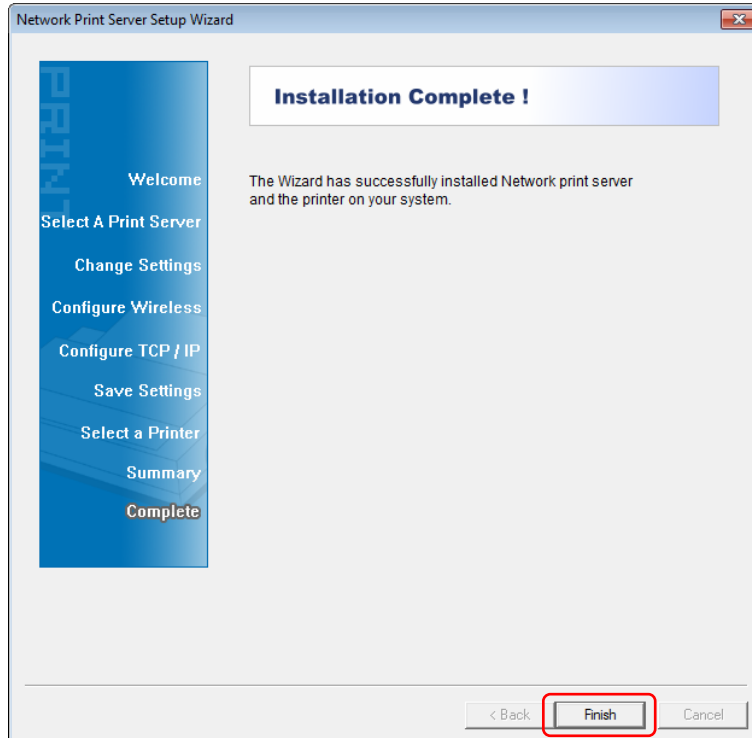


Figure 3-17

Now, the computer has successfully joined the infrastructure network, and it can also use the printer via the print server.

3.2 Using Web Management Page in Windows XP/Vista/7/8

3.2.1 Setting up a Print Server Network

To connect to the print server using the web management page, the configurations for Windows XP, Windows Vista, Windows 7 and Windows 8 are similar. Here we take Windows 7 for example.

1. On the Windows taskbar, click the **Start->Control Panel**.

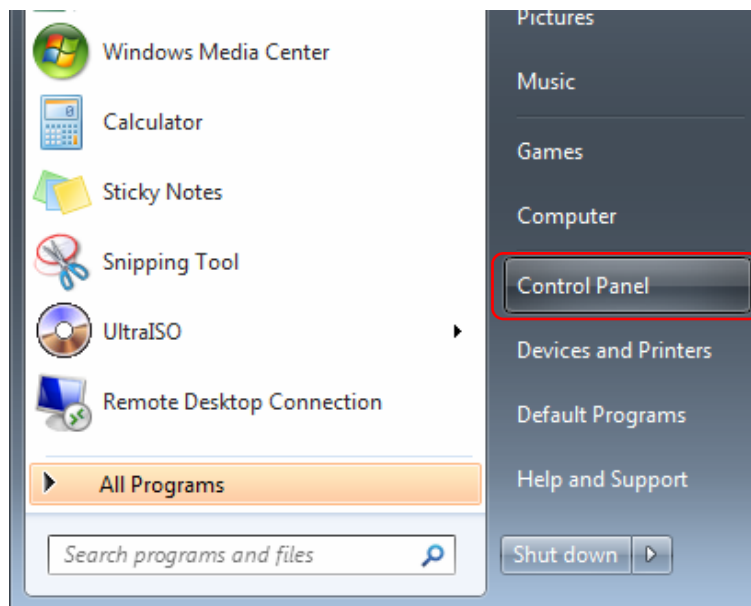


Figure 3-18

2. Click **View network status and tasks**.

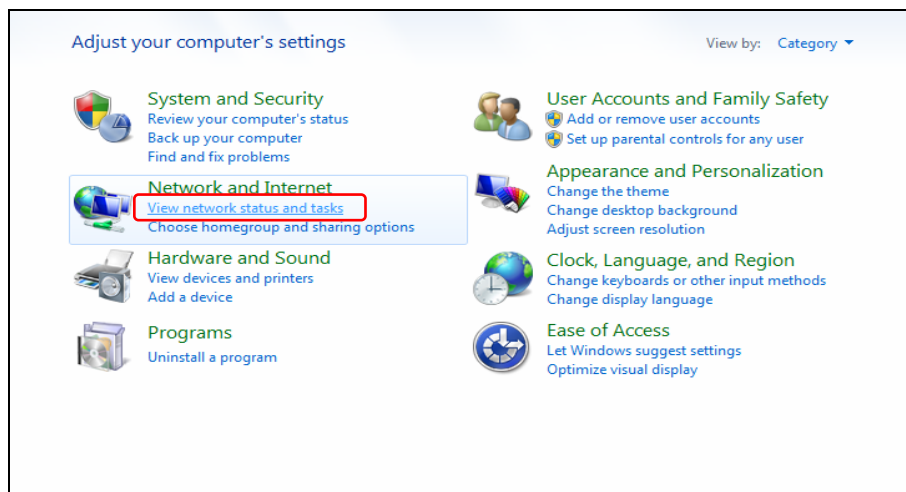


Figure 3-19

3. Click **Change adapter settings**.

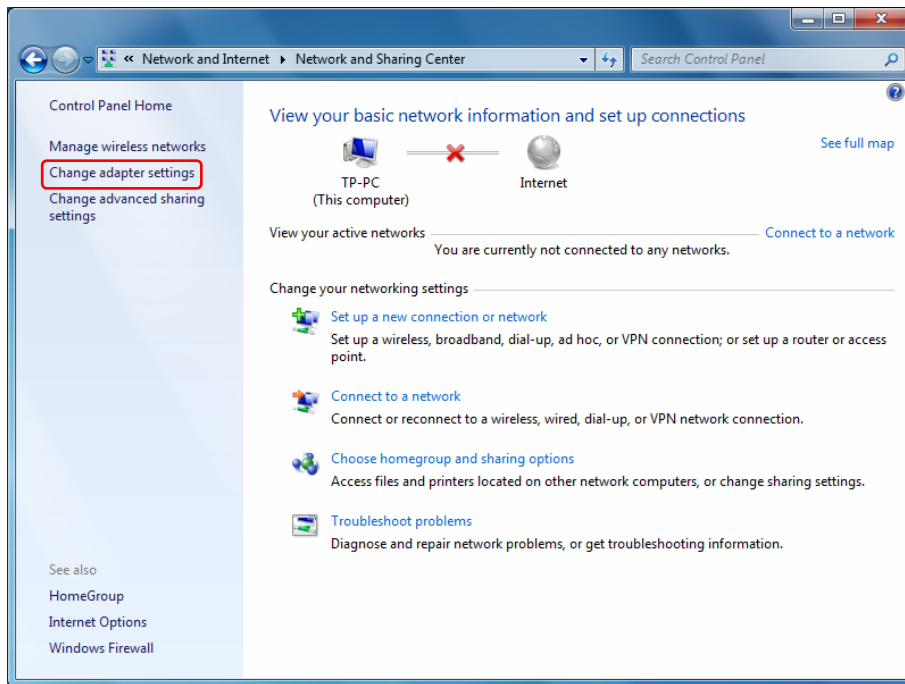


Figure 3-20

4. Right click **Wireless Network Connection**, and select **Properties**.

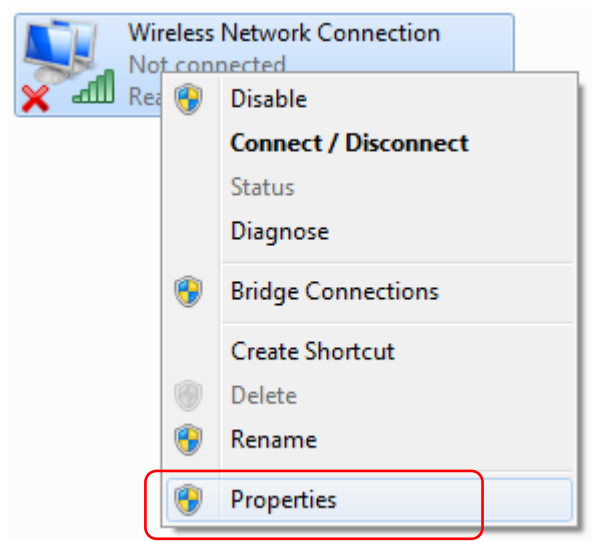


Figure 3-21

5. Double click **Internet Protocol Version 4 (TCP/IPv4)**, or select it and then click **Properties**.

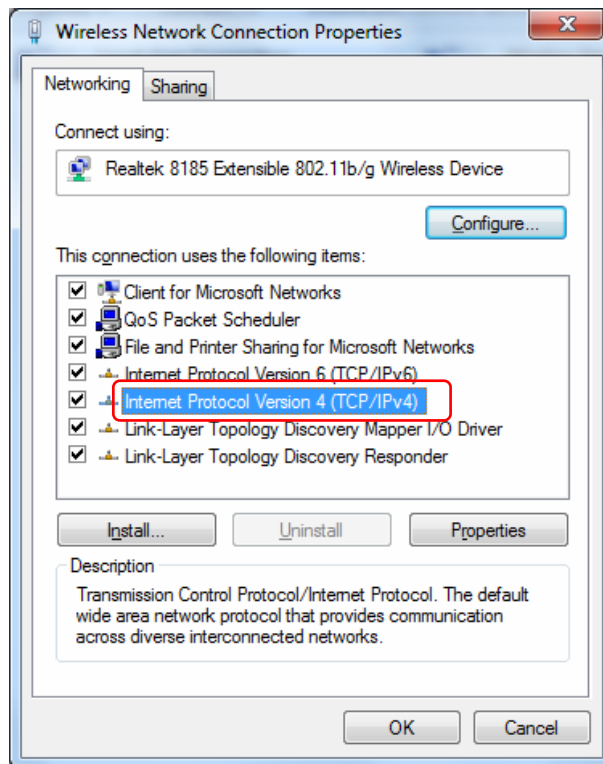


Figure 3-22

6. Select “Use the following IP address” and input a static IP address **192.168.0.X** ($1 < X < 10$ or $10 < X < 255$, for 192.168.0.10 is the default IP address of the print server), Subnet mask **255.255.255.0**. Click **OK**.

Note:

The IP address must be within the same subnet as your wireless print server. For example, if the IP address of your print server has been changed to **192.168.1.10**, then the IP address should be configured as **192.168.1.X** ($1 < X < 10$ or $10 < X < 255$).

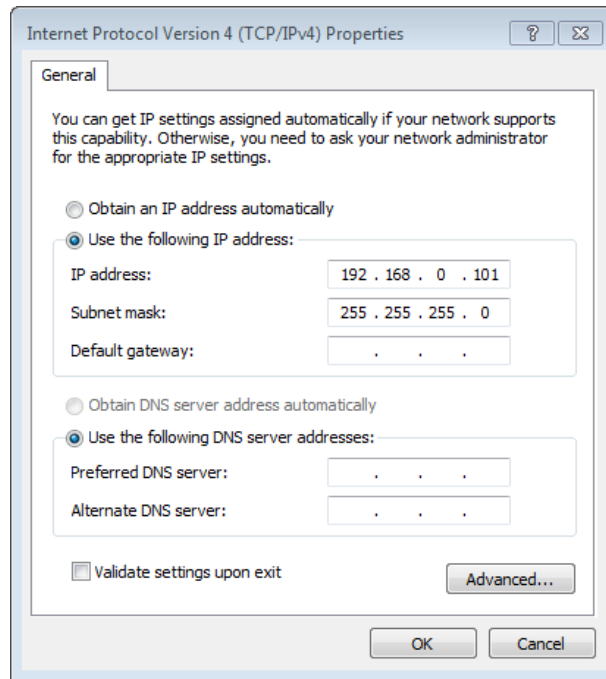


Figure 3-23


7. Left-click the  icon at the right bottom on your desktop and the wireless network list will appear. Select the SSID **WLAN-PS** of wireless print server and then click **Connect**. (Here we use Windows Zero Configuration as an example. You can also use vendor utility of wireless adapter.)



Figure 3-24

- Once the connection is successful, you will see the following screen shown in Figure 3-25.

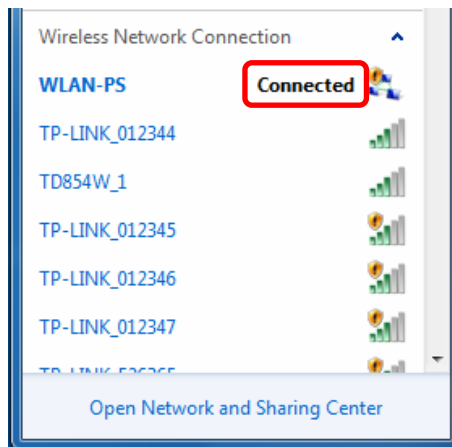


Figure 3-25

- Open a web-browser and type in the IP address of the print server (the default is 192.168.0.10) in the address field of the browser to login to the web management of the print server.

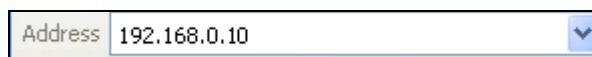


Figure 3-26

- After a moment, a login window will appear, similar to the Figure 3-27. Enter **admin** in lower case letters for the User Name and **admin** for the Password. Then click the **OK** button or press the **Enter** key.

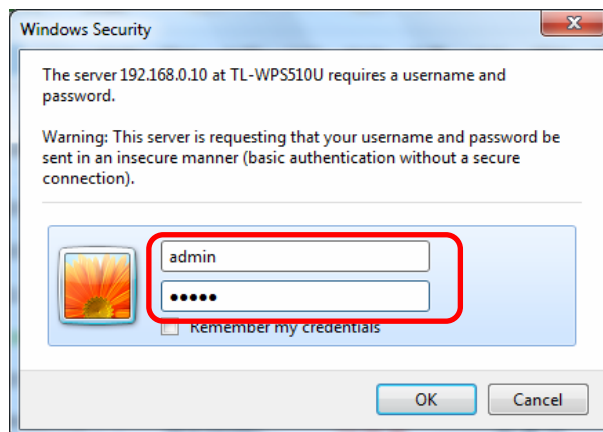


Figure 3-27

- Then the print server web management page will appear, with which you can configure all print server settings.

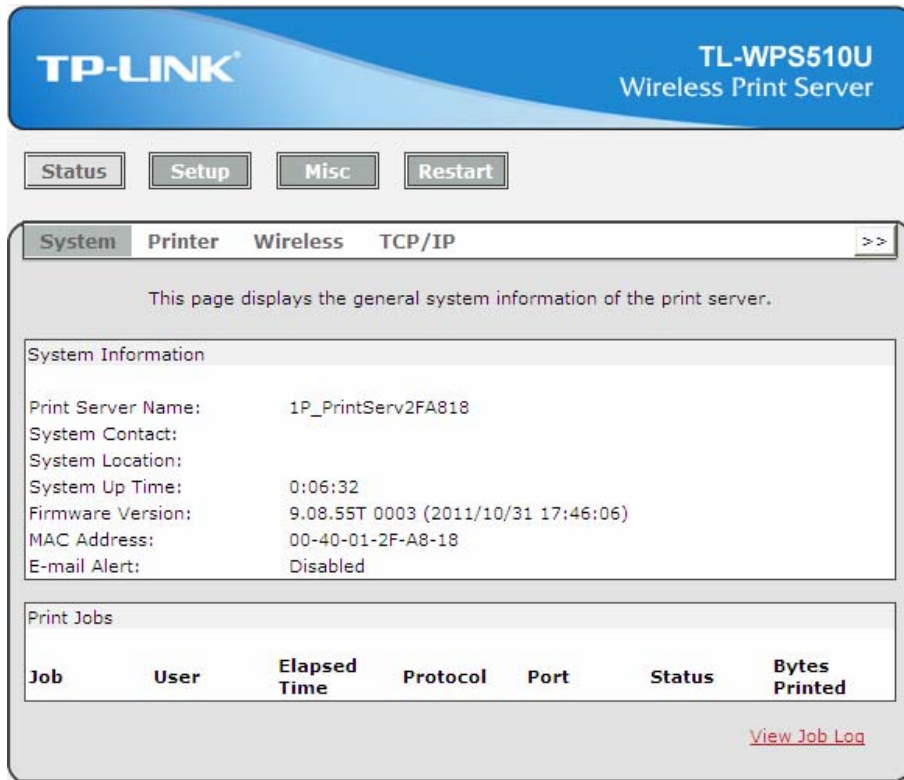


Figure 3-28

12. Click **“Setup”** and then choose **“TCP/IP”**. Check **“Use the following TCP/IP Settings”** radio button and then fill in the following parameters.
 - **IP Address:** Specify an IP address for your print server. The IP address must be within the same subnet as your wireless router or access point. For example, if the LAN IP address of your wireless router or access point is **192.168.1.1**, the IP address should be set to **192.168.1.X** (1<X<255). **192.168.1.10** is suggested.
 - **Subnet Mask:** Enter the subnet mask of your network.
 - **Default Router:** Enter the LAN IP address of your wireless router or access point. Here takes 192.168.1.1 for example.

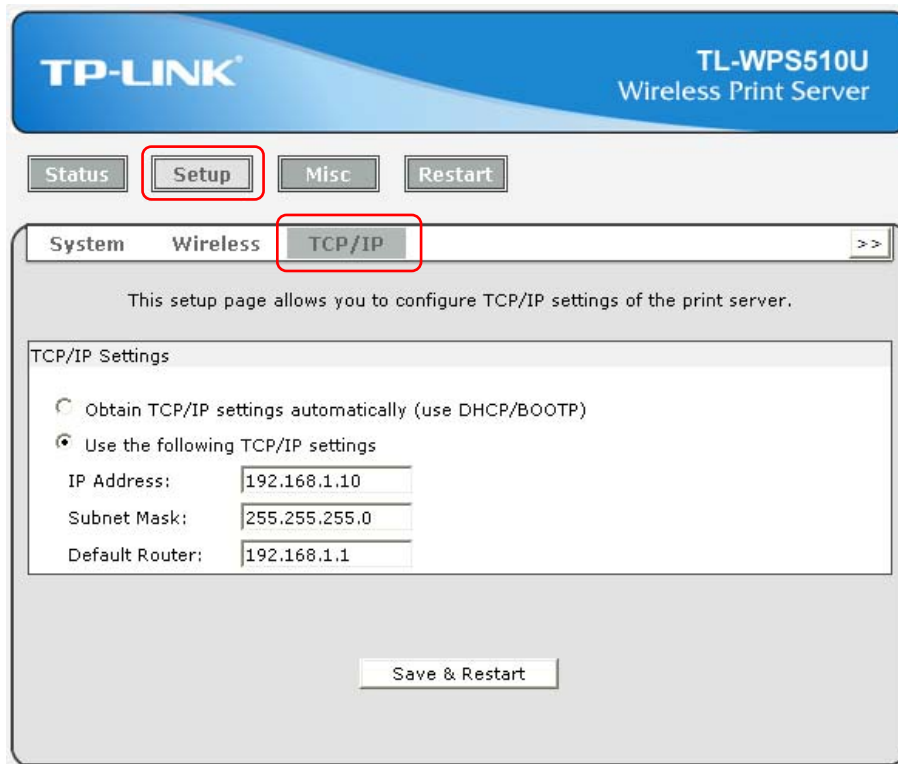


Figure 3-29

13. Click **Save & Restart** and then wait the print server to save the changes and restart.

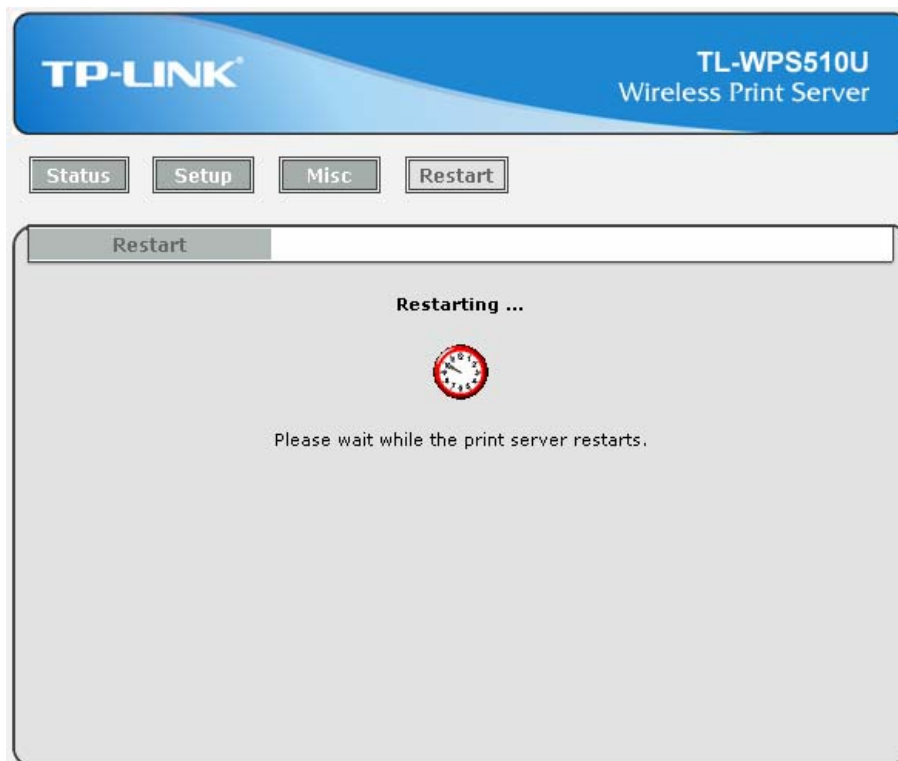


Figure 3-30

14. Enter the “**Internet Protocol (TCP/IP) Properties**” page as shown in Figure 3-31. Fill in the following parameters.

- **IP Address:** Specify an IP address for your adapter. The IP address must be within the same subnet as your wireless router or access point. For example, if the LAN IP address of your wireless router or access point is **192.168.1.1**, the IP address should be set to **192.168.1.X** (1<X<10 or 10<X<255, for 192.168.1.10 has been specified for your print server). Here we take 192.168.1.101 for example.
- **Subnet Mask:** Enter the subnet mask of your network.
- **Default Gateway:** Enter the LAN IP address of your wireless router or access point. Here takes 192.168.1.1 for example.

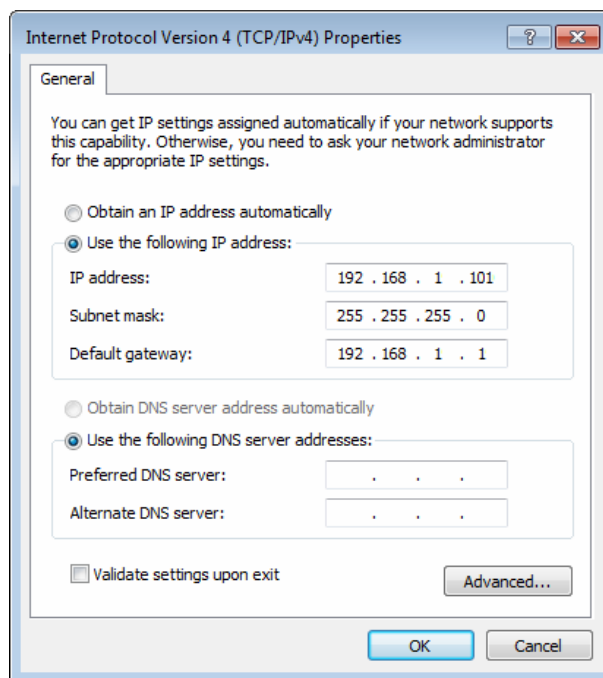


Figure 3-31

15. Login to the web management page of the print server again. Select “**Setup**”, and then choose “**Wireless**”. Configure the following wireless parameters.

- **Network Type/ SSID /Channel:** select the network (Take TP-LINK_A4161E for example) from the “**Site Survey**” list and then these three fields will be automatically filled.
- **Transmission Rate:** Keep the default value.
- **Wireless Mode:** Keep the default value.
- **Security Type:** Select the security type of your wireless router (TP-LINK_A4161E) and then enter the key. Here we take WPA-PAK security type with 1234567890 as the key for example.

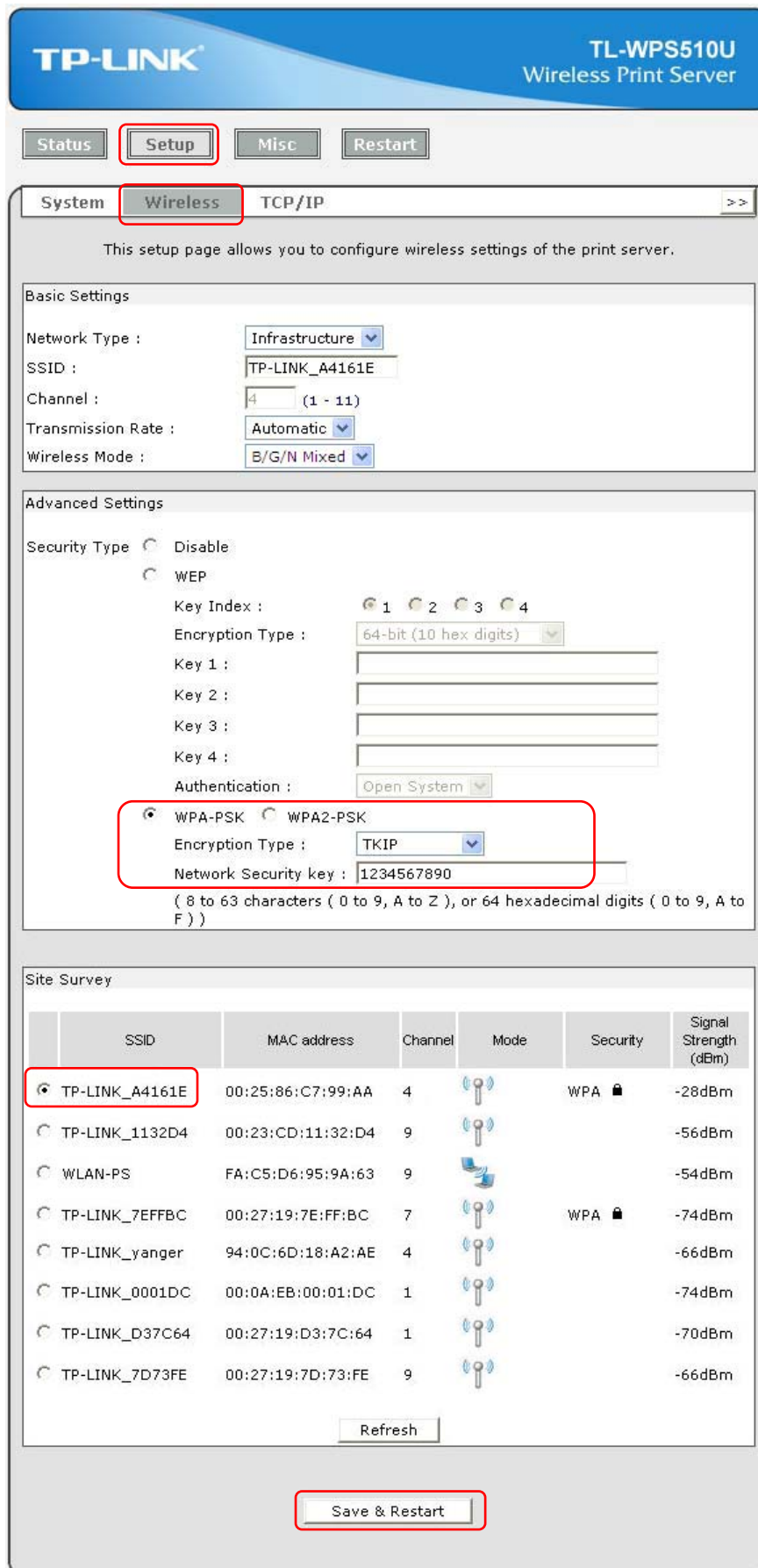


Figure 3-32

- Click **Save & Restart** button and then wait the print server to restart.



Figure 3-33

- Connect your computer to the wireless router. We take **TP-LINK_A4161E** for example. The password is **0123456789**.

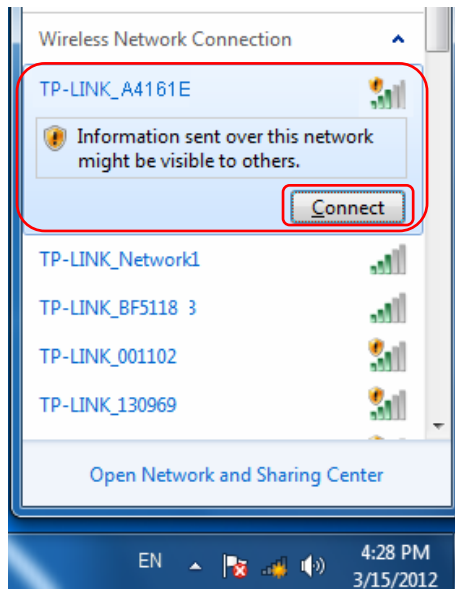


Figure 3-34

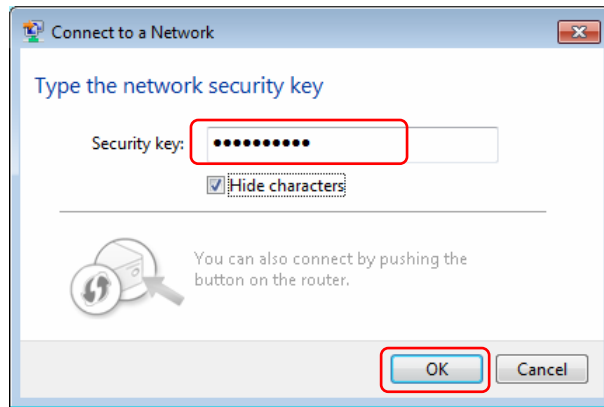


Figure 3-35

18. Install a printer.

- If you've already installed the printer on your computer, please refer to [C-1 If You Have Installed a Printer Before](#) to add a Standard TCP/IP port for it.
- If you never install a printer on your computer, please refer to [C-2 If You Never Install a Printer Before](#) to install a printer and add a Standard TCP/IP port for it.

3.2.2 Joining the Print Server Network

If another computer wants to join the print server network to share the printer, please follow the steps below.

1. Connect the computer to your router or access point. For details, please refer to your router's installation guide.
2. Install a printer.
 - If you've already installed the printer on your computer, please refer to [C-1 If You Have Installed a Printer Before](#) to add a Standard TCP/IP port for it.
 - If you never install a printer on your computer, please refer to [C-2 If You Never Install a Printer Before](#) to install a printer and add a Standard TCP/IP port for it.

3.3 Using Web Management Page in MAC OS

3.3.1 Setting up a Print Server Network

1. Click the **Apple Icon** on the left side of the top-bar, and then choose **System Preferences...**

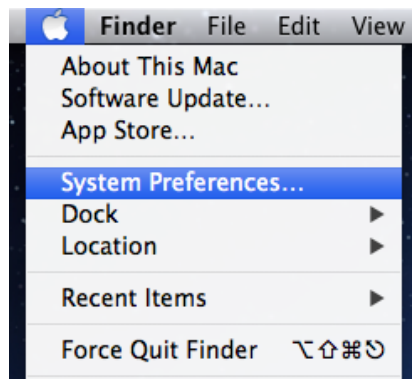


Figure 3-36

2. On the new window, please choose **Network**.

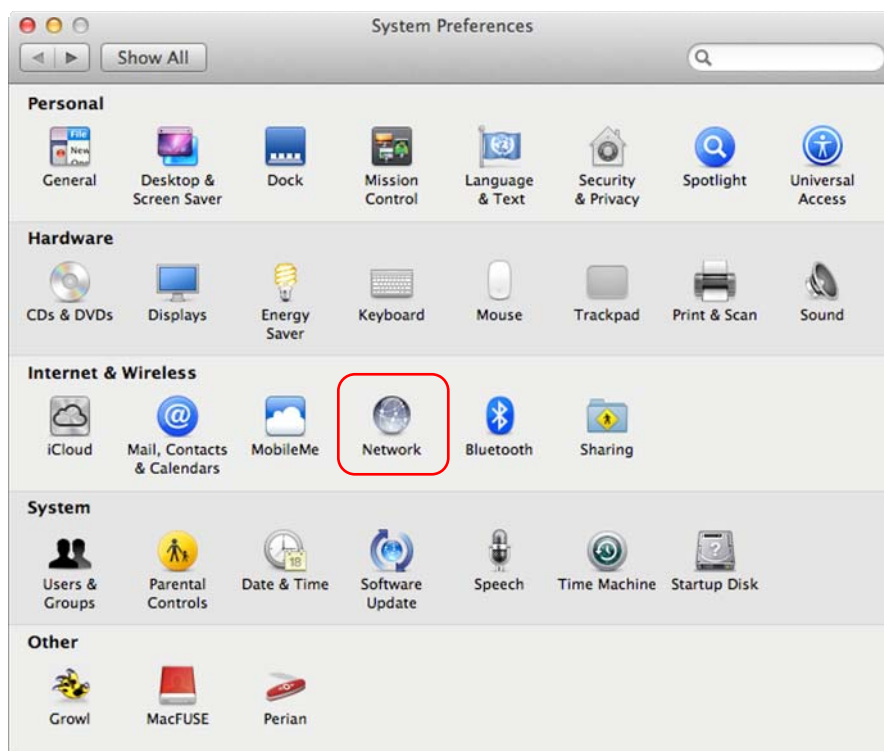


Figure 3-37

- Follow the steps as shown in Figure 3-38 and Figure 3-39 to set the IP address.

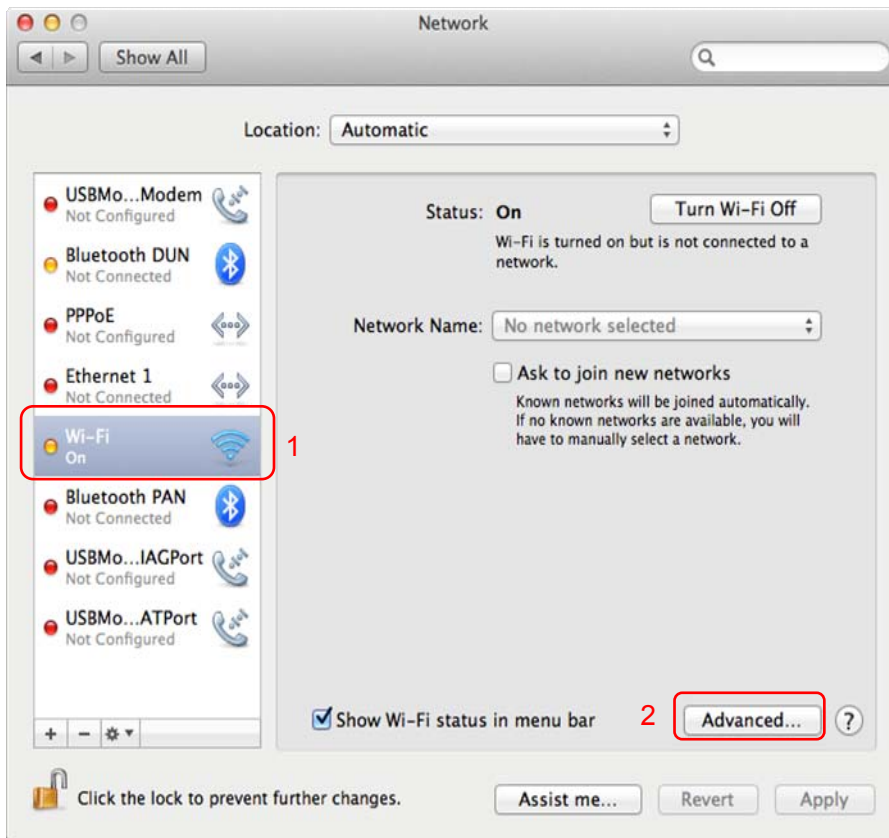


Figure 3-38

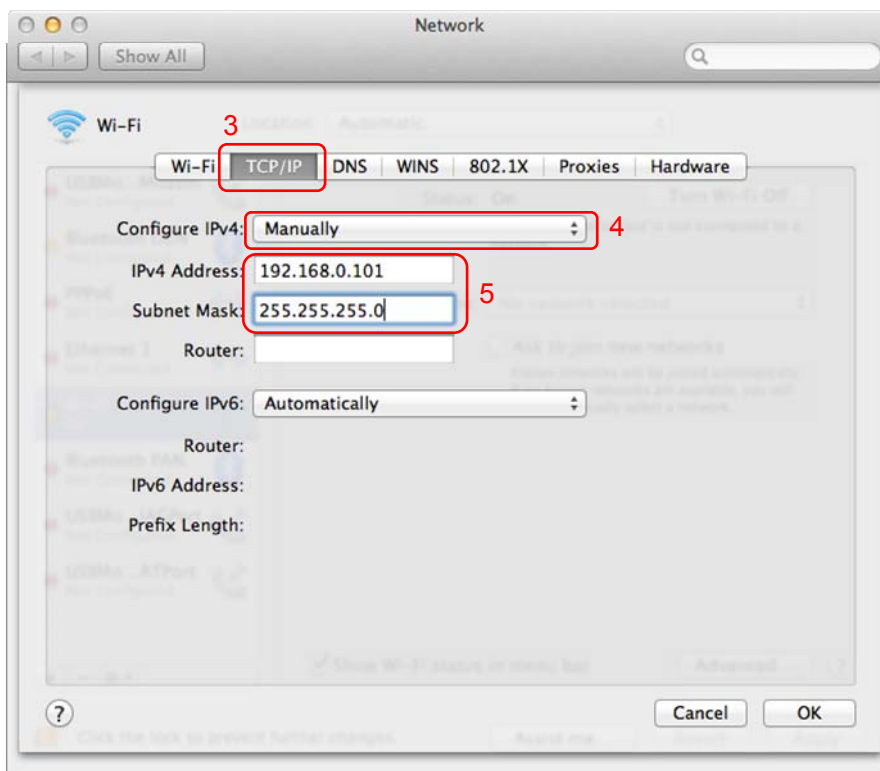


Figure 3-39

4. Connect your MAC computer to the TL-WPS510U. In default, the print server will work on **Ad-Hoc** mode with the SSID **WLAN-PS**, so please select the wireless network WLAN-PS to connect. If you need to reset the TL-WPS510U but don't know how to do, please refer to the [Appendix A: How to Reset the Print Server](#).

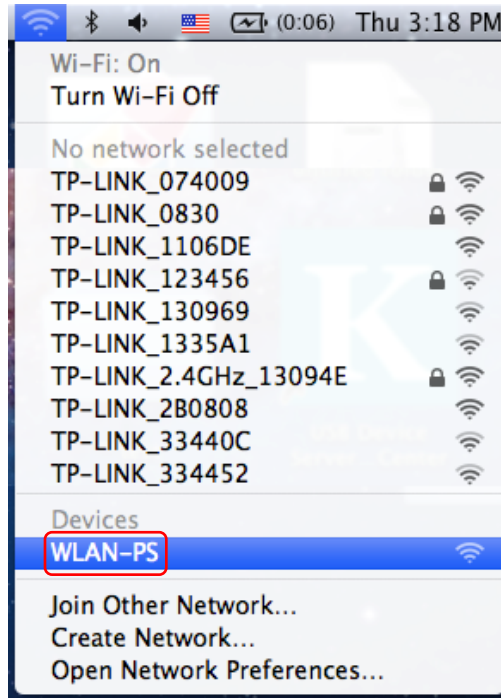


Figure 3-40

- Open the Safari and login to the TL-WPS510U (default Name: **admin**, default Password: **admin**). Go to “**Setup -> TCP/IP**”, and then select “**Use the following TCP/IP settings**”. Change its IP Address and Subnet Mask to **192.168.1.10** and **255.255.255.0**; enter your router’s IP address in the Default Router blank (e.g. **192.168.1.1**). After the configuration, click **Save & Restart**.

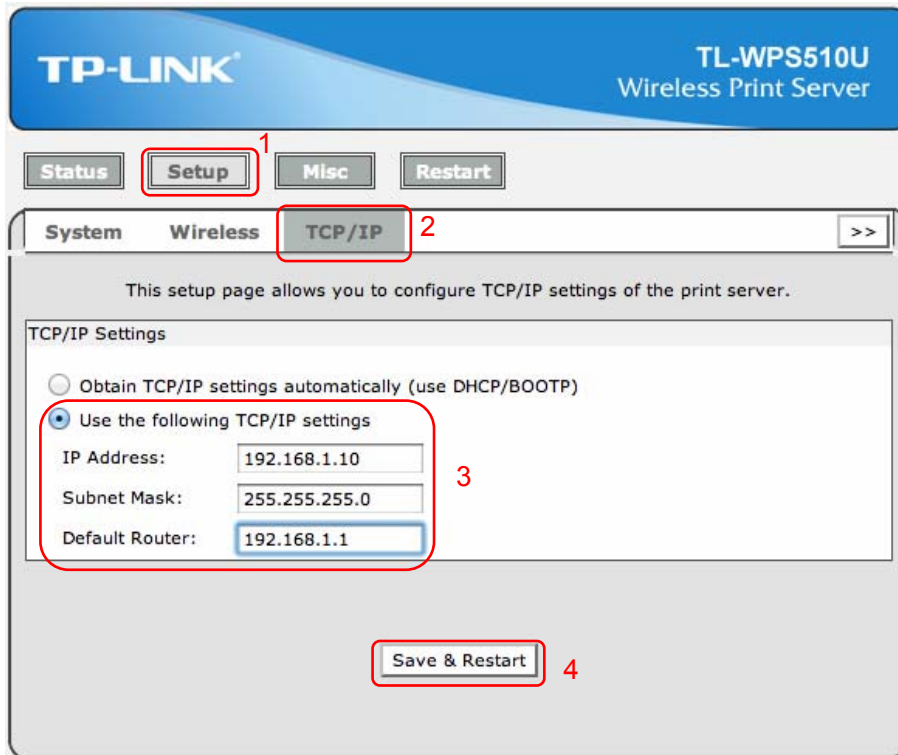


Figure 3-41



Figure 3-42

6. Change the MAC computer's IP Address, Subnet Mask to **192.168.1.101** and **255.255.255.0**; enter your router's IP address in the Router blank (e.g. **192.168.1.1**). Click "OK" and the MAC computer will be automatically connected to the network **WLAN-PS** again.

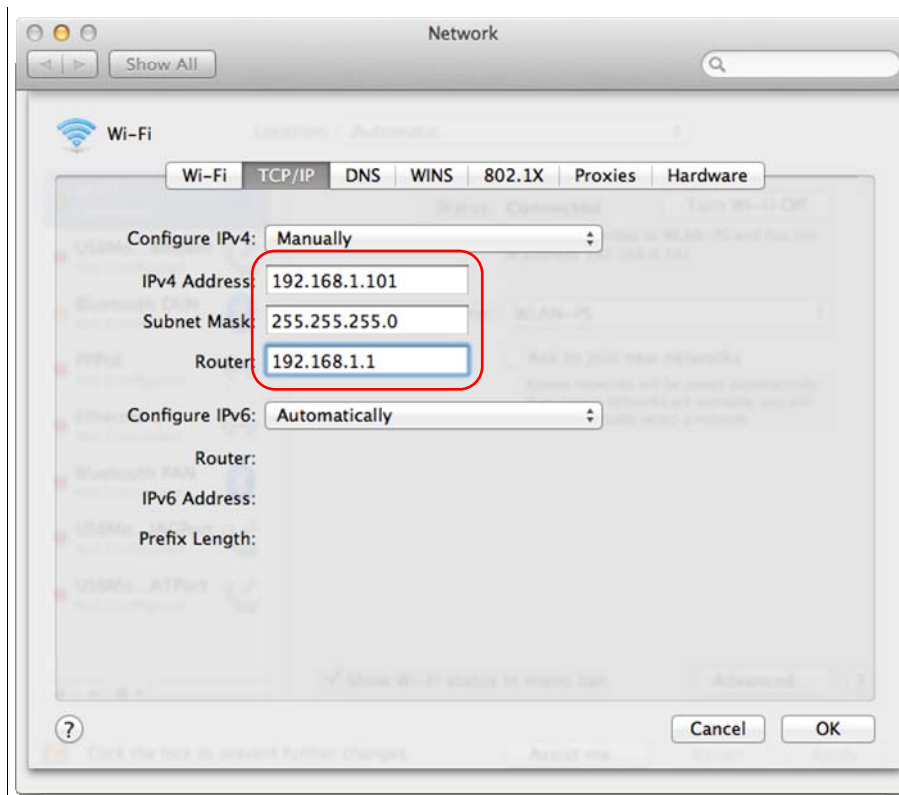


Figure 3-43

7. Login to the TL-WPS510U and go to "Setup -> Wireless". Configure the wireless parameters according to your wireless router. After the configuration, click **Save & Restart**.
 - **Network Type/ SSID /Channel:** select the network (Take TP-LINK_A4161E for example) from the "Site Survey" list and then these three fields will be automatically filled.
 - **Transmission Rate:** Keep the default value.
 - **Wireless Mode:** Keep the default value.
 - **Security Type:** Select the security type of your wireless router (TP-LINK_A4161E) and then enter the key. Here we take WPA-PAK security type with 1234567890 as the key for example.

In this example as shown in Figure 3-44, the router's SSID is **TP-LINK_61BB7A**, its security type is **WPA-PSK**, and its password is **0123456789**. You can also select a wireless network from the network list as shown in Figure 3-45, and then the SSID will be automatically filled in the corresponding field.

This setup page allows you to configure wireless settings of the print server.

Basic Settings

Network Type : Infrastructure ▾

SSID : TP-LINK_61BB7A

Channel : 6 (1 - 11)

Transmission Rate : Automatic ▾

Wireless Mode : B/G/N Mixed ▾

Advanced Settings

Security Type Disable
 WEP

Key Index : 1 2 3 4

Encryption Type : 64-bit (10 hex digits) ▾

Key 1 :

Key 2 :

Key 3 :

Key 4 :

Authentication : Open System ▾

WPA-PSK WPA2-PSK

Encryption Type : AES (CCMP) ▾

Network Security key : 0123456789
 (8 to 63 characters (ASCII), or 64 hexadecimal digits (0 to 9, A to F))

Figure 3-44

	SSID	MAC address	Channel	Mode	Security	Signal Strength(dBm)
<input type="radio"/>	TP-LINK_334452	00:11:22:33:44:52	11			-85dBm
<input type="radio"/>	TP-LINK_2.4GHz_13094E	00:0A:EB:13:09:4E	11		WPA	-75dBm
<input checked="" type="radio"/>	TP-LINK_61BB7A	00:AA:BB:52:63:65	11		WPA	-81dBm
<input type="radio"/>	TP-LINK_130969	00:0A:EB:13:09:69	11			-77dBm

Figure 3-45

8. Connect your MAC computer to the wireless router. We take **TP-LINK_61BB7A** for example. The password is **0123456789**.

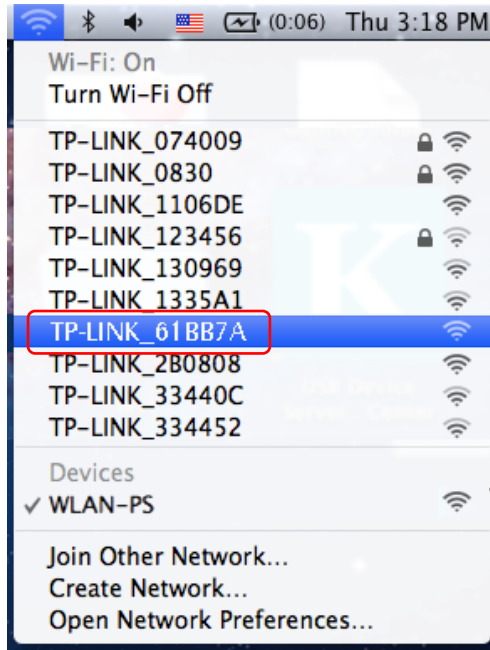


Figure 3-46

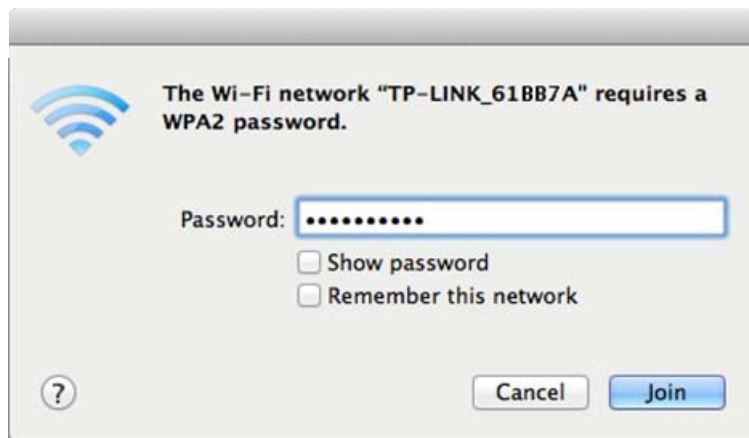


Figure 3-47

9. Try to access the TL-WPS510U and you can see **Wireless** status. The TL-WPS510U is working on Infrastructure mode and can communicate with the wireless router and your MAC computer.

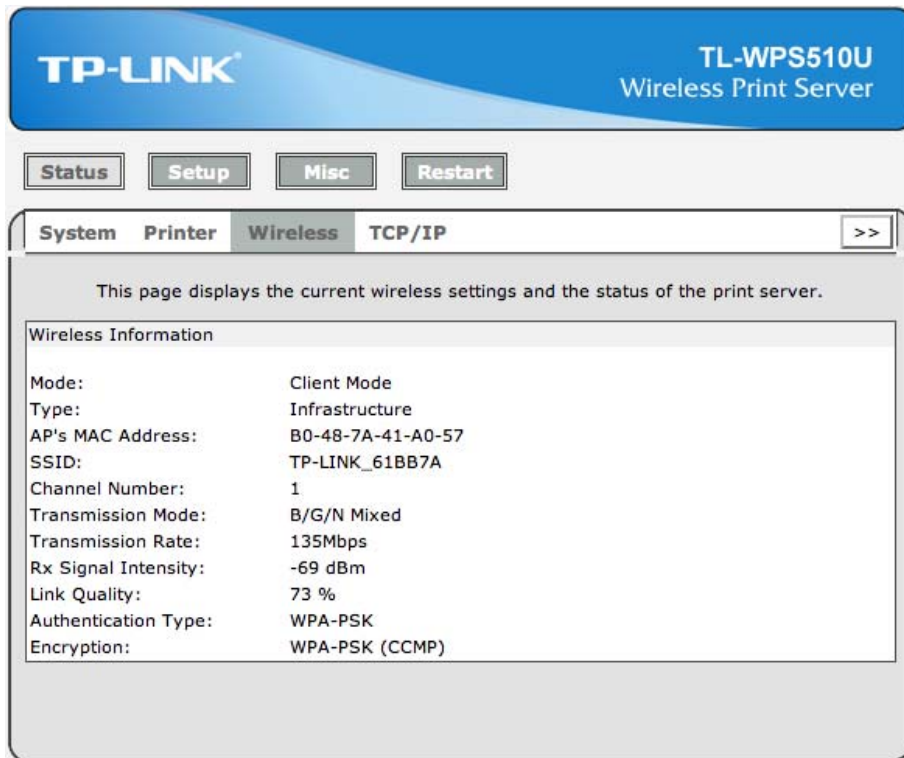


Figure 3-48

3.3.2 Printer Installation in MAC OS

1. Click the **Apple icon** -> **System Performances** -> **Print & Scan** to add a Standard TCP/IP port for the printer.

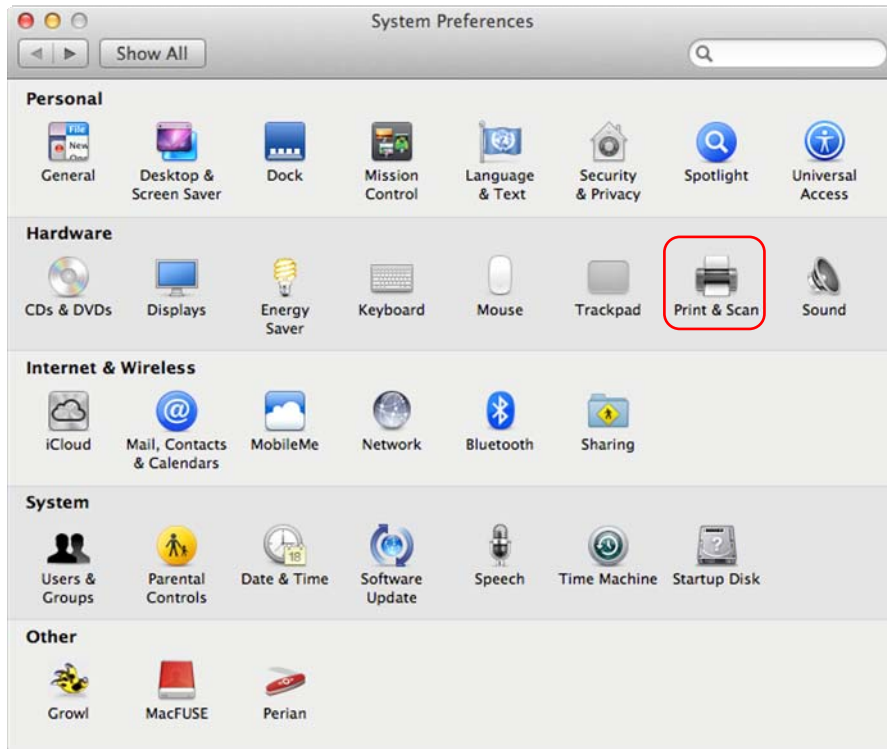


Figure 3-49

2. Click .

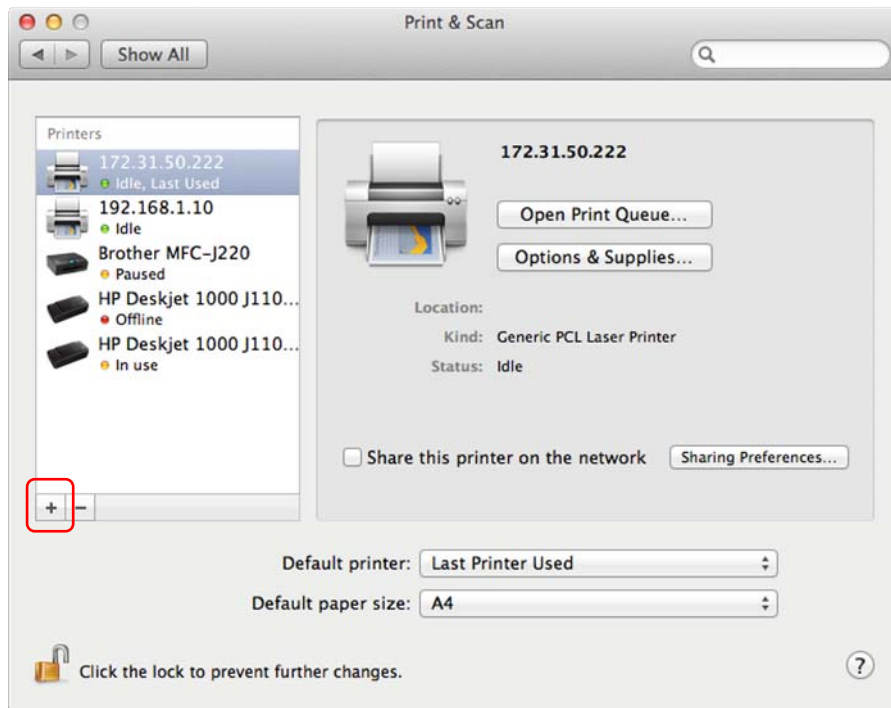


Figure 3-50

3. Select **"IP"**, and then configure the following parameters as shown in Figure 3-51 and Figure 3-52. Select **"Line Printer Daemon - LPD"** for Protocol and enter the print server's IP **192.168.1.10** for Address and **lp1** for Queue. Give a name to your printer. For Print Using, go to **"Select Printer Software..."** and select your printer model from the list. Here takes HP Deskjet 1000 J110 series for example. And then click **Add**.

You can login to the print server, and go to **Status -> TCP/IP** to find the **IP address** of print server. Here we take 192.168.1.10 for example.

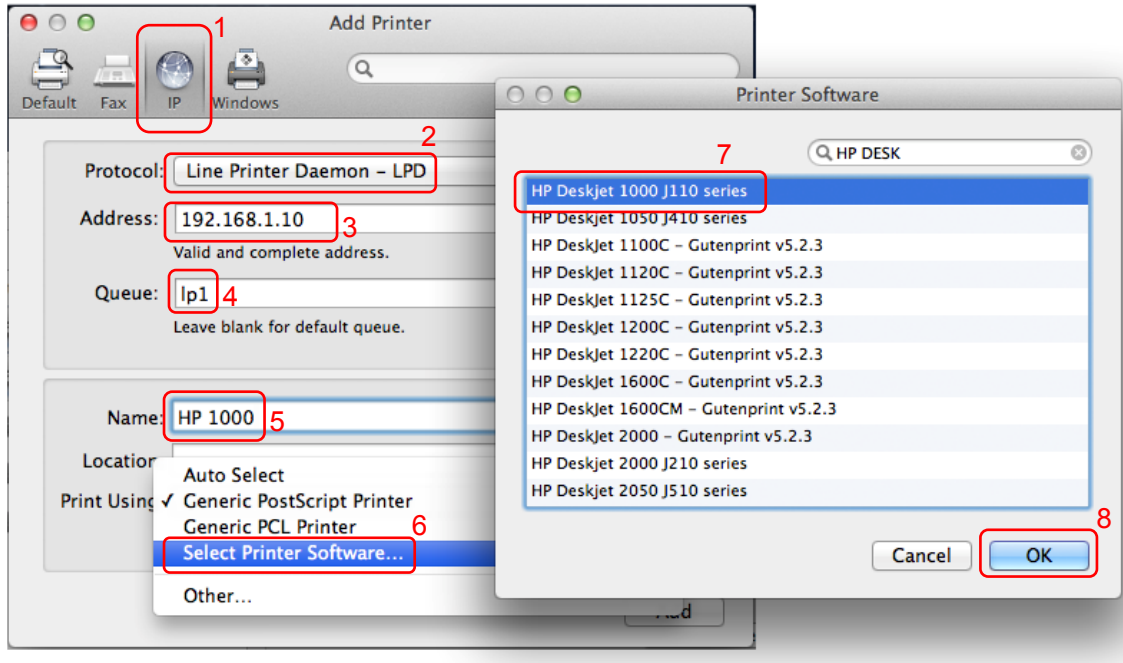


Figure 3-51

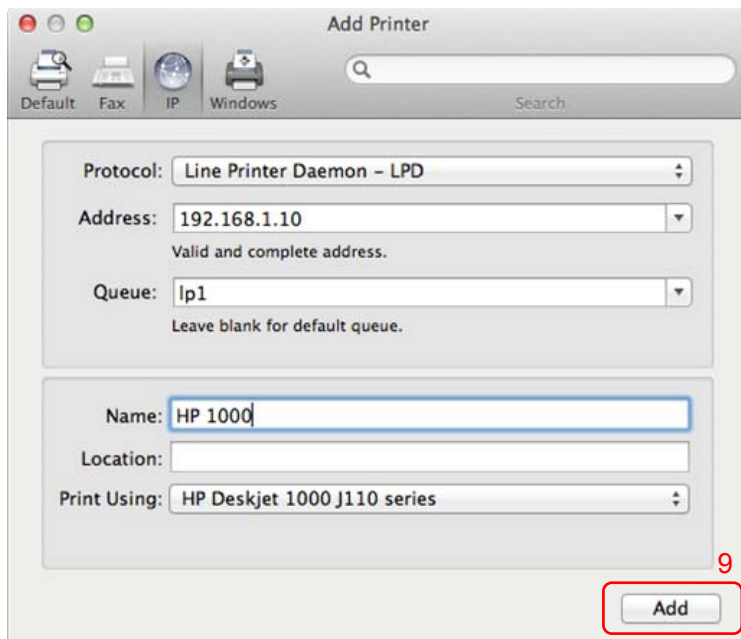


Figure 3-52

4. Till now you've successfully installed the print server and can print via the TL-WPS510U.

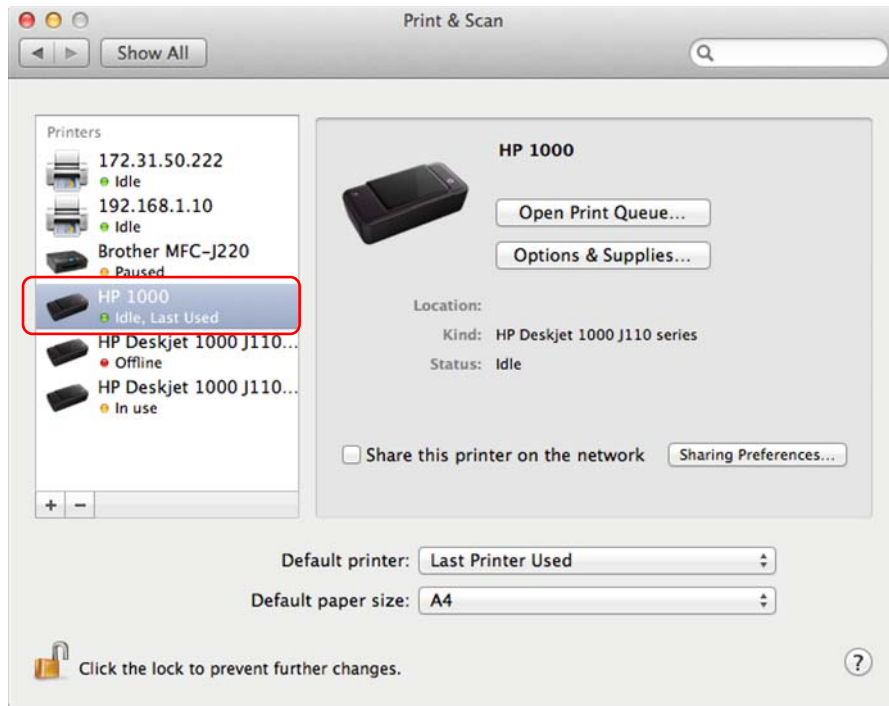


Figure 3-53

3.3.3 Joining the Print Server Network

If another computer wants to join the print server network to share the printer, please follow the steps bellow.

1. Connect the computer to your router or access point. For details, please refer to your router's installation guide.
2. Install a printer. For details, please refer to [3.3.2 Printer Installation in MAC OS](#).

Chapter 4. More Configuration for the Print Server

The Print Server contains an embedded web server that can be accessed through a supported web browser on a WLAN, for example, IE6, Firefox or above is recommended. The embedded web server provides access to configuration and management pages for the print server and the connected peripheral device.

To use the embedded web server, you should first connect your adapter to the print server.

4.1 Login

Open a web-browser and type in the IP address of the print server (the default is 192.168.0.10) in the address field of the browser to login to the web management of the print server.



Figure 4-1

After a moment, a login window will appear, similar to the Figure 4-2. Enter **admin** in lower case letters for the User Name and **admin** for the Password. Then click the **OK** button or press the **Enter** key.

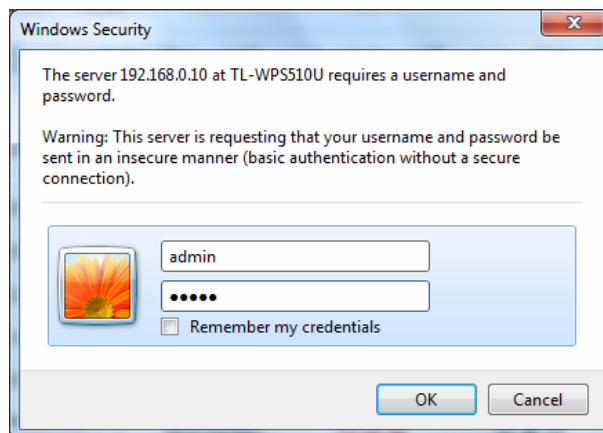


Figure 4-2

Then the print server web management page will appear, with which you can configure all print server settings.

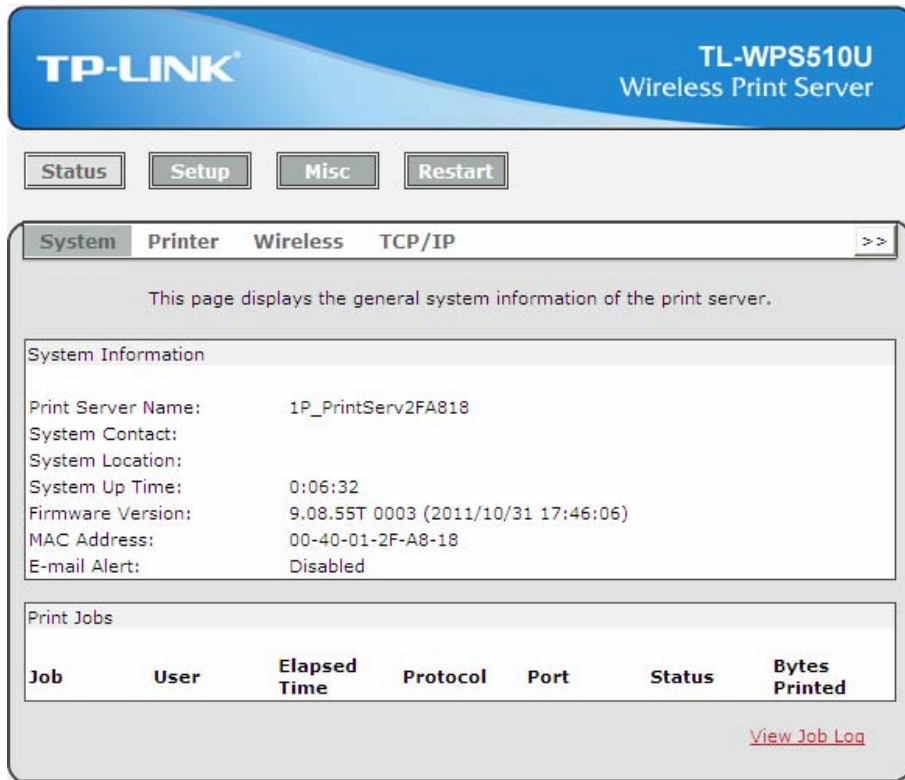


Figure 4-3

4.2 Status

The Status page shows the current information about the print server as shown in Figure 4-3. By clicking the corresponding tab, you can view the following information, including **System**, **Printer**, **Wireless**, and **TCP/IP**.

4.2.1 System

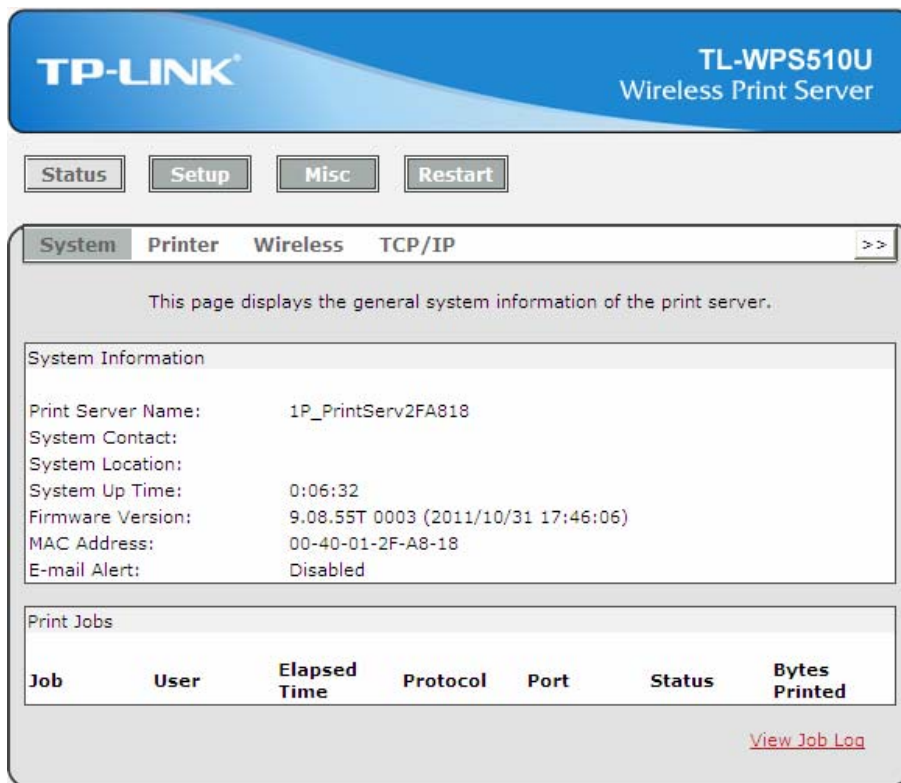


Figure 4-4

- **Print Server Name:** This option allows you to view device name of the print server. To correct the print server’s device name.
- **System Up Time:** This option allows you to view uptime of the print server. When you start the print server, it will compute the print server from start time to power off time.
- **Firmware Version:** This option allows you to view firmware version of the print server. To verify the print server’s firmware version is newer in this time.
- **MAC Address:** This option allows you to view Node ID of the print server. The Node ID is unique from any print server.

4.2.2 Printer

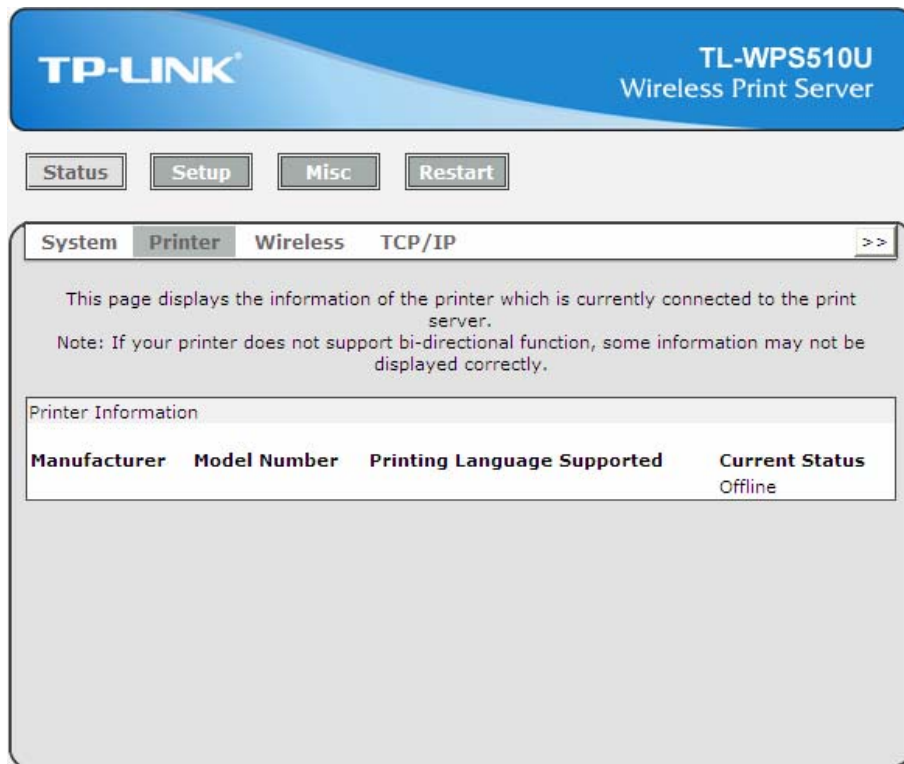


Figure 4-5

- **Manufacturer:** This option allows you to view manufacturer of the printer. When the printer connected with the print server, it will be show in the manufacture box.
- **Model Number:** This option allows you to view model of the printer. When the printer connected with the print server, it will be show in the model box.
- **Printing Language Supported:** This option allows you to view command to set the printer. When the printer connected with the print server, it will be show in the command box.
- **Current Status:** This option allows you to view status of the printer. When the printer connected with the print server, it will be show in the status box. For Example: Waiting for job. It is means the printer already to printing.

4.2.3 Wireless

The Wireless Status page shows the current wireless information of the print server.

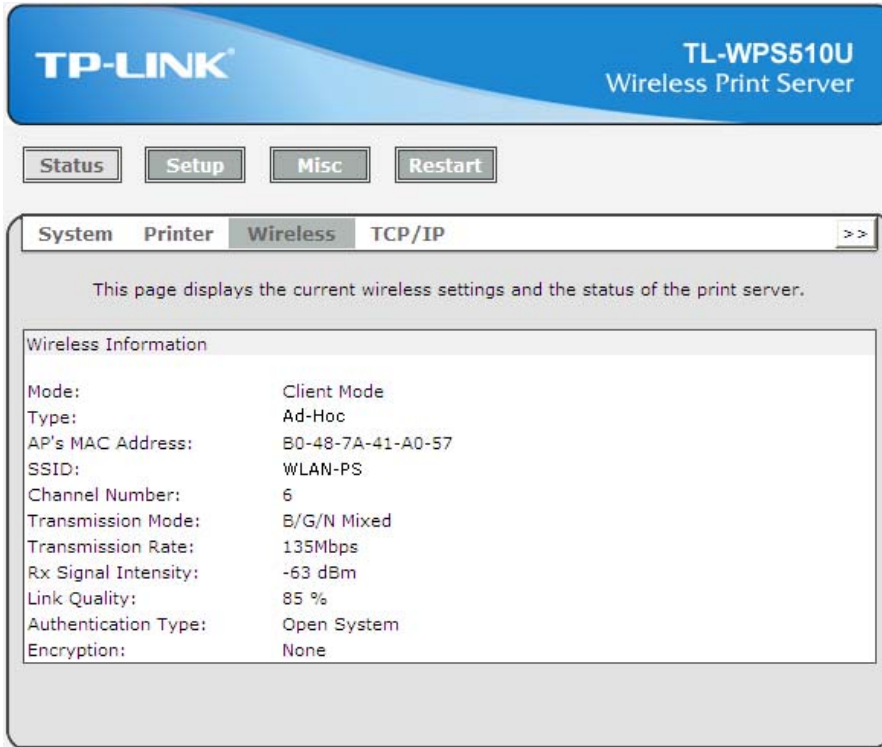


Figure 4-6

4.2.4 TCP/IP

The TCP/IP Status page shows the current TCP/IP settings of the print server.

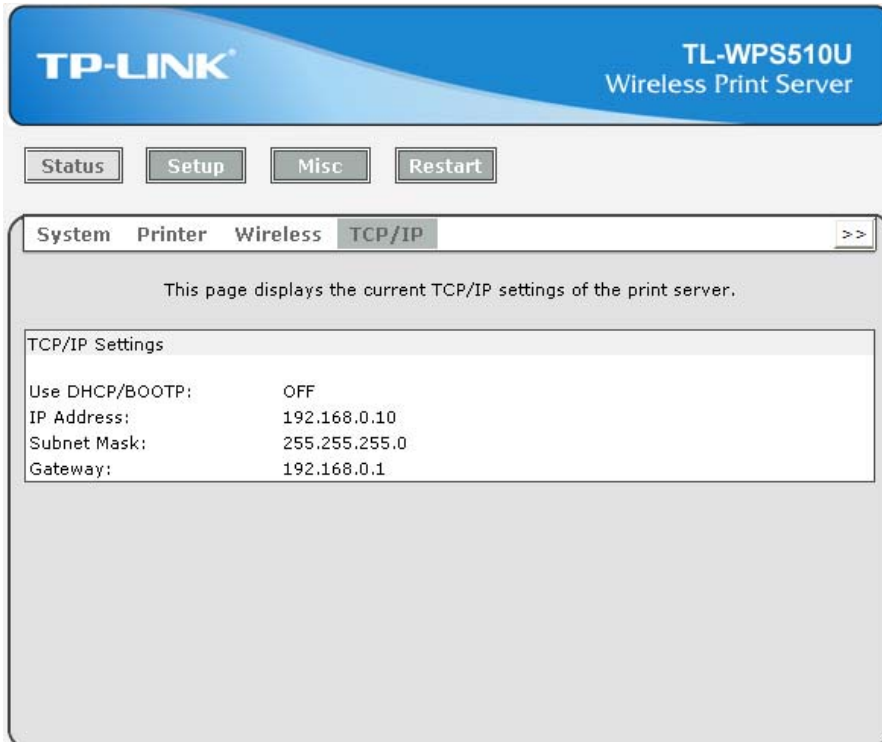


Figure 4-7

- **Use DHCP/BOOTP:** This option allows you to view DHCP/ BOOTP status. If there is a DHCP/BOOTP server on your network, this option allows the print server to obtain IP-related settings automatically from your DHCP server.
- **IP Address:** This option allows you to view IP address from the print server. The IP address must meet the IP addressing requirements of the network segment. (default: 192.168.0.10)
- **Subnet Mask:** This option allows you to view subnet mask from the print server.
- **Gateway:** This option allows you to view gateway from the print server.

4.3 Setup

The Setup page allows you to configure general system settings of the print server. By clicking the corresponding tab, you can configure the following items, including **System**, **Wireless**, and **TCP/IP**.

4.3.1 System Setup

Click **System**, the following screen will appear.

The screenshot displays the web interface for the TP-LINK TL-WPS510U Wireless Print Server. At the top, there is a blue header with the TP-LINK logo and the device name. Below the header are four buttons: Status, Setup, Misc, and Restart. The Setup page is active, showing three sub-tabs: System, Wireless, and TCP/IP. The System tab is selected, and the page content includes:

- E-mail Alert Settings:**
 - E-mail Alert: Disabled (dropdown menu)
 - SMTP Server IP Address: 0.0.0.0 (text input)
 - Administrator's E-mail Address: (empty text input)
- System Settings:**
 - Print Server Name: 1P_PrintServ2FA818 (text input)
 - System Contact: (empty text input)
 - System Location: (empty text input)
- Administrator's Password:**
 - Account: admin (text input)
 - Password: (password input with dots)
 - Confirm password: (password input with dots)

At the bottom of the page, there is a 'Save & Restart' button.

Figure 4-8

- **E-mail Alert:** This option allows you to receive alert of the device.
- **SMTP Server IP Address:** Enter the IP Address of the SMTP Server.
- **Administrator E-mail Address:** Enter the e-mail address used to receive alert.
- **Print Server Name:** This option allows you to input device name of the print server. To correct the print server's device name.
- **Password:** This option allows you to change password of the print server. Factory default is **admin**. (default user name is **admin**, it's not available to change)

4.3.2 Wireless Setup

Click **Wireless**, the following screen will appear.

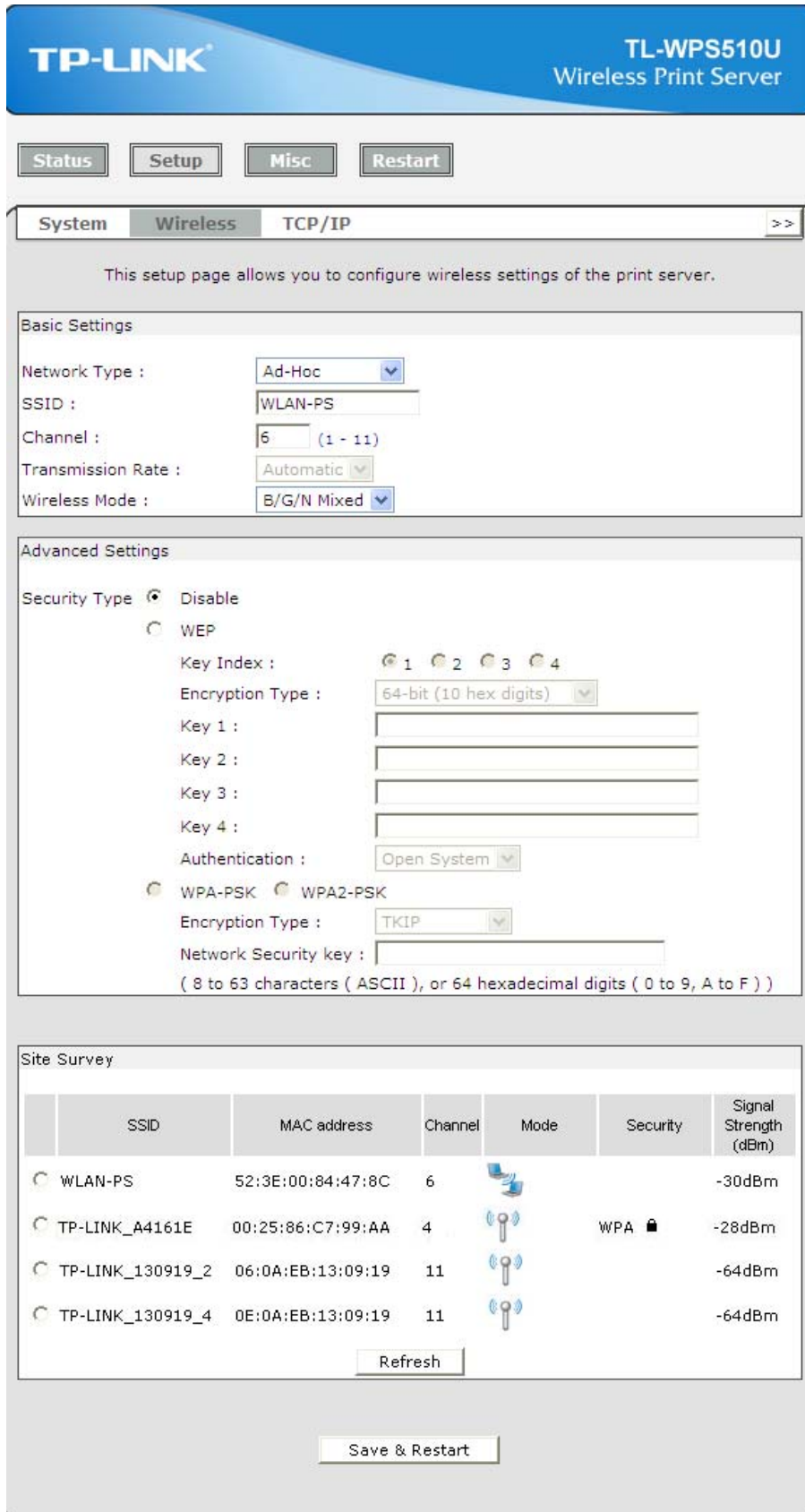


Figure 4-9

Basic Settings:

- **Network Type:** To change the WLAN type to Ad-Hoc (default) or Infrastructure.
- **SSID:** To change the SSID to connect an existing wireless network.(default: WLAN-PS)
- **Channel:** Indicates the channel setting for this print server.
- **Transmission Rate:** Select the basic transfer rates based on the speed of wireless network.
- **Wireless Mode:** Select the WLAN mode based on the existing wireless network

Advanced Settings:

- **Security Type:** To change the wireless security settings based on the existing wireless network. Default setting is Disable.

Site Survey:

The following site survey table will provide a list of existing wireless network. You can choose one to join in.

4.3.3 TCP/IP Setup

Click **TCP/IP**, the following screen will appear.

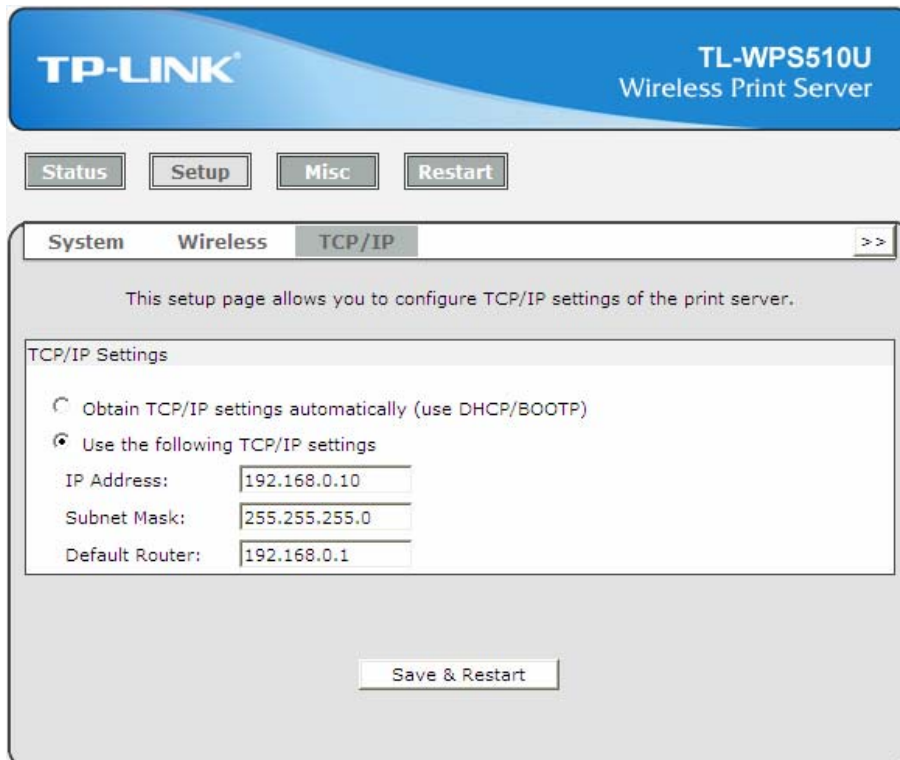


Figure 4-10

- **Use DHCP/BOOTP:** This option allows you to select DHCP/ BOOTP option. If there is a DHCP/BOOTP server on your network. This option allows the print server to obtain IP-related settings automatically from your DHCP server.

- **IP Address:** This option allows you to input IP address from the print server. The IP address must meet the IP addressing requirements of the network segment.

Note:

On the TCP/IP Setup screen, specify a fixed IP address is highly recommended.

- **Subnet Mask:** This option allows you to input subnet mask from the print server. The IP address must meet the IP addressing requirements of the network segment.
- **Default Router:** This option allows you to input gateway from the print server. This IP address of gateway must meet the router or gateway to go across of the network segment.

4.4 Misc

4.4.1 Factory Default

Click **OK** to restore the print server to its Factory Default settings.

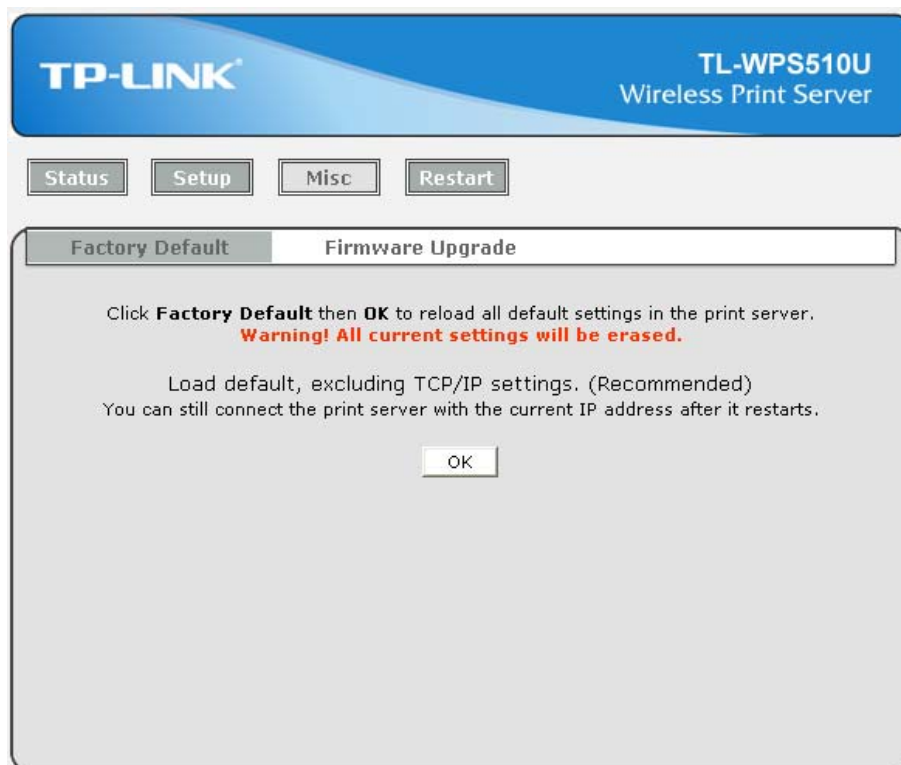


Figure 4-11

4.4.2 Firmware Upgrade

Click **Browse...** to select the firmware file and then click **Firmware Upgrade** to upgrade the firmware of the print server.

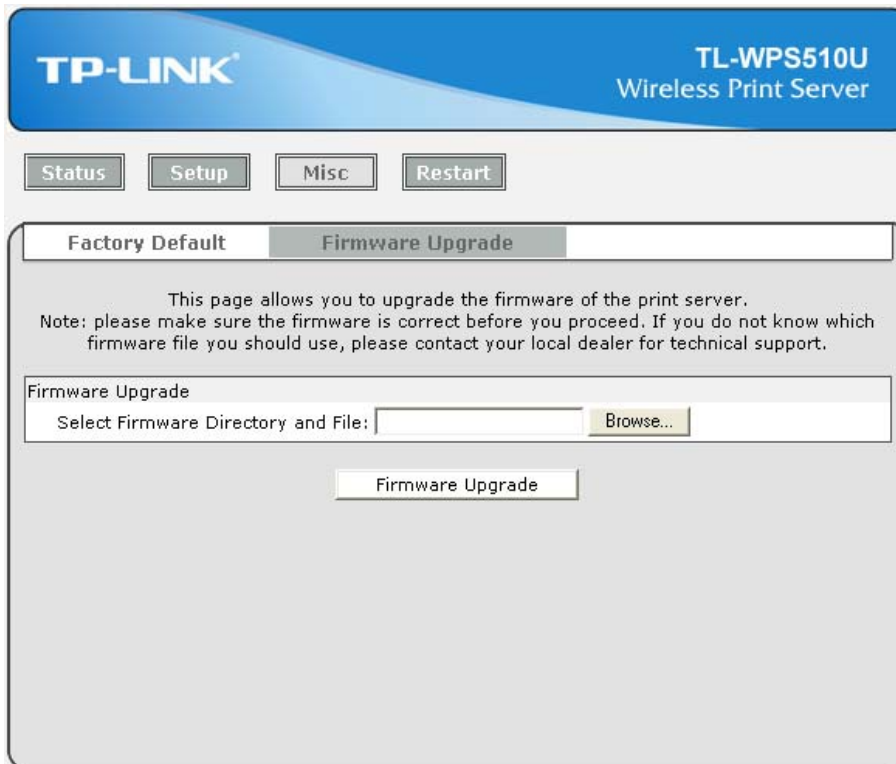


Figure 4-12

4.5 Restart

Click **OK** to reboot the print server.



Figure 4-13

Appendix A: How to Reset the Print Server

If you lose the connection with TL-WPS510U because of wrong configuration, you need to reset it to factory default settings and configure it again.

Follow the steps below to reset TL-WPS510U:

1. Unplug the power adapter of TL-WPS510U;
2. Press and hold the Reset button on TL-WPS510U;
3. Plug in the power adapter of TL-WPS510U and continue pressing the Reset button for about 10 seconds.
4. Release the Reset button and wait for the WLAN LED (green) to flash.
5. When the WLAN LED light flashes regularly, the resetting is completed and you can see the WLAN-PS Ad-Hoc network in your wireless network list.

Appendix B: Frequently Asked Questions

1. **Print jobs are sent to the print queue successfully, but fail to be sent to the printer.**

- 1) Check all the information of the print server by running PSAdmin.
- 2) Check to see that if the power adapters are properly connected.
- 3) Recheck the print server connection by running the PSAdmin.
- 4) Check all the information in print port setting.

2. **Print jobs start printing, but print very slowly or print unknown characters.**

A printer driver is missing or is incompatible with that printer. Using a print driver that is not specific for the printer can cause printing errors. Install the proper printer driver. If these printer drivers are not available to you, please contact your printer manufacturer.

3. **The upgrading process indication bar stops and does not seem to proceed again while upgrading the print server.**

- 1) Check the wireless network connection, especially from the workstation running the PSAdmin to the print server unit.
- 2) Upgrade the print server again by PSAdmin or WEB browser.

4. **The Setup Wizard can't find print server.**

Please disable the Personal Firewall temporarily or adjust the security level to lower.

5. **Power Related Problems**

The print server requires an external AC power adapter in order for it to function. If you have a power problem, check to see whether the power cord or its connectors are damaged. More importantly, check to see that the AC power adapter included with the print server matches the AC voltage in your country or area. Using an incorrect AC adapter will damage your print server.

6. **Print Port Related Problems**

Printing data failure may be caused by a loose connection of the print server to the USB port of the printer. Check to see if any of the pins on the USB port connector are damaged. In addition, check the cable connection. If the pins are damaged, contact your dealer for a replacement connector.

7. TCP/IP Problems

A. The print server's Node ID you specified in the "arp" command is not correct.

If this is the case, please ensure the Node ID field in the corresponding entry of the print server's IP address in NT's ARP cache table is correct by typing the following command at NT's DOS prompt. "arp -a"

If the Node ID shown on the screen doesn't match the print server's Node ID, please follow the instructions below to reset the entry.

- 1) At NT's DOS prompt, type "arp -d <print server's IP address>" to delete the current entry.
- 2) Type "arp -s <print server's IP> <print server's Node ID>" to specify a new ARP entry.

B. The print server's IP address is duplicated or is as same as another computer's IP address on the network.

If this is the case, please consult your network administrator to obtain an unused IP address for your print server.

Appendix C: Printer Installation in Windows OS

Other computers in the same local network that need to share the printing should add the Standard TCP/IP port on their system. There're two conditions. Please choose one according to your system.

[C-1](#) is on the precondition that you have ever installed a printer driver and now you want to use a print server to share the printer through your network. You need to change the printer port to Standard TCP/IP port.

[C-2](#) is on the precondition that you never use the printer on your computer before but also want to share printing. You just need to add a printer, follow the steps to create a Standard TCP/IP port, and then install the printer driver.

C-1 If You Have Installed a Printer Before

1. Click **Start > Control Panel > Classic View > Printers**.

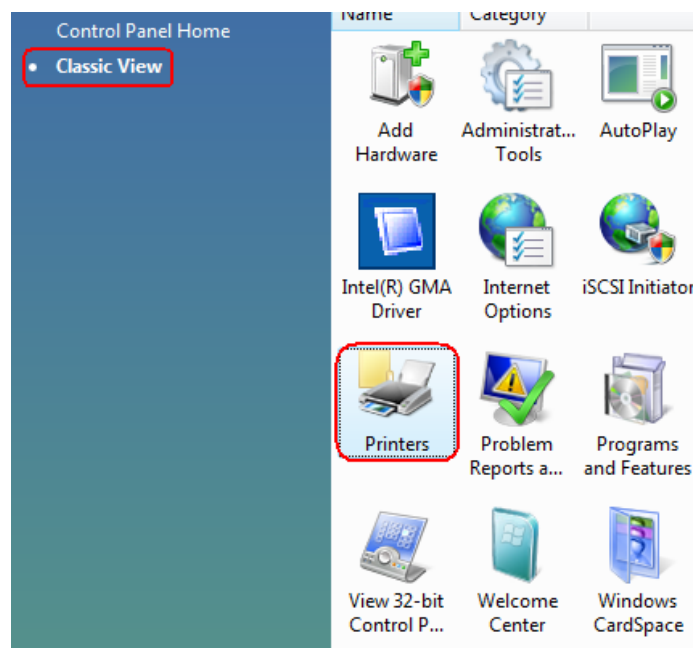


Figure C-1

- Find your installed printer icon, **right-click** on it, and select **Properties**.

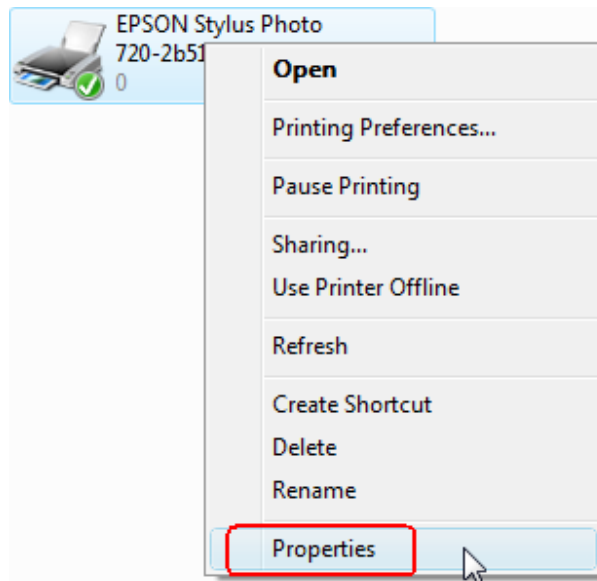


Figure C-2

- Click **Ports > Add Port > Standard TCP/IP Port > New Port > Next**.

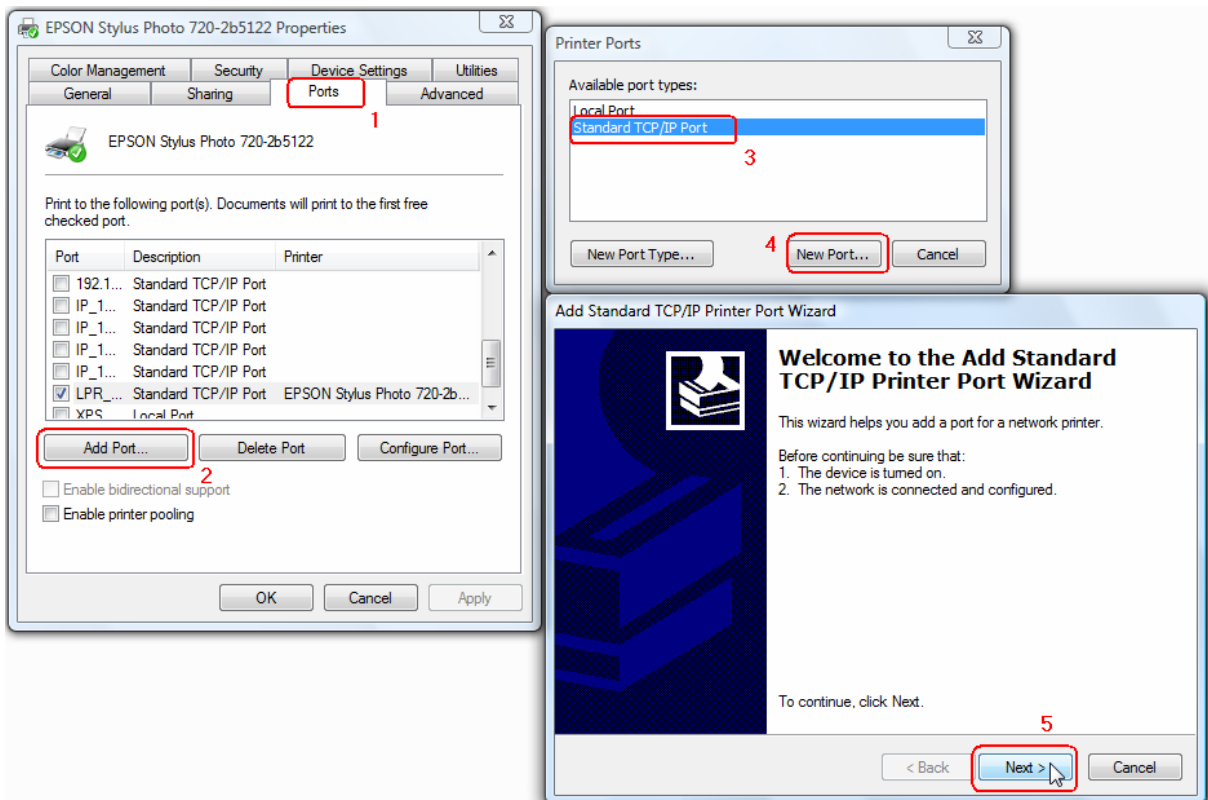


Figure C-3

4. Input the exact **IP address** of print server. Click **Next**. (You can login to the print server, and go to **Status -> TCP/IP** to find the **IP address** of print server. Here we take 192.168.1.10 for example.)

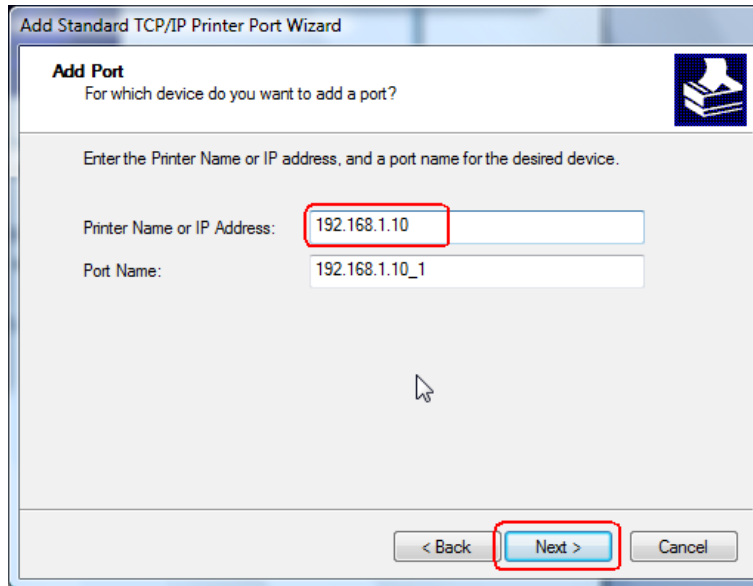


Figure C-4

5. Select **Custom**, and click **Settings**.

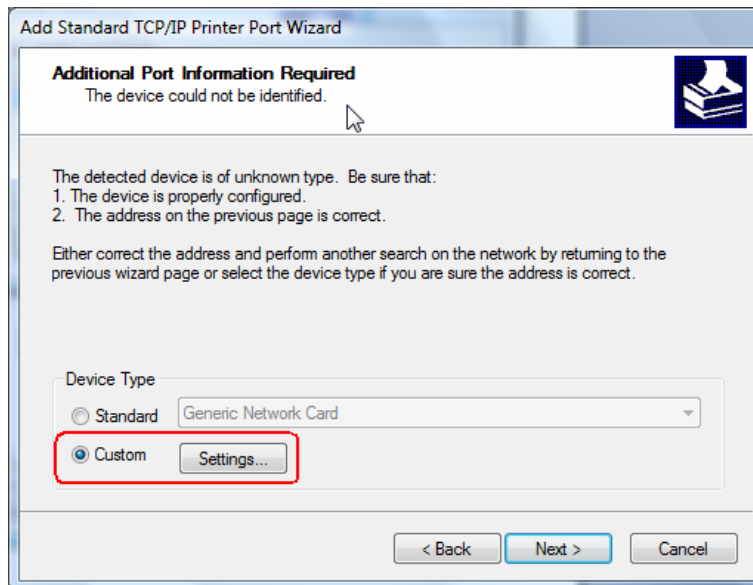


Figure C-5

- Choose **LPR**, and input the queue name as **lp1**. Click **OK**.

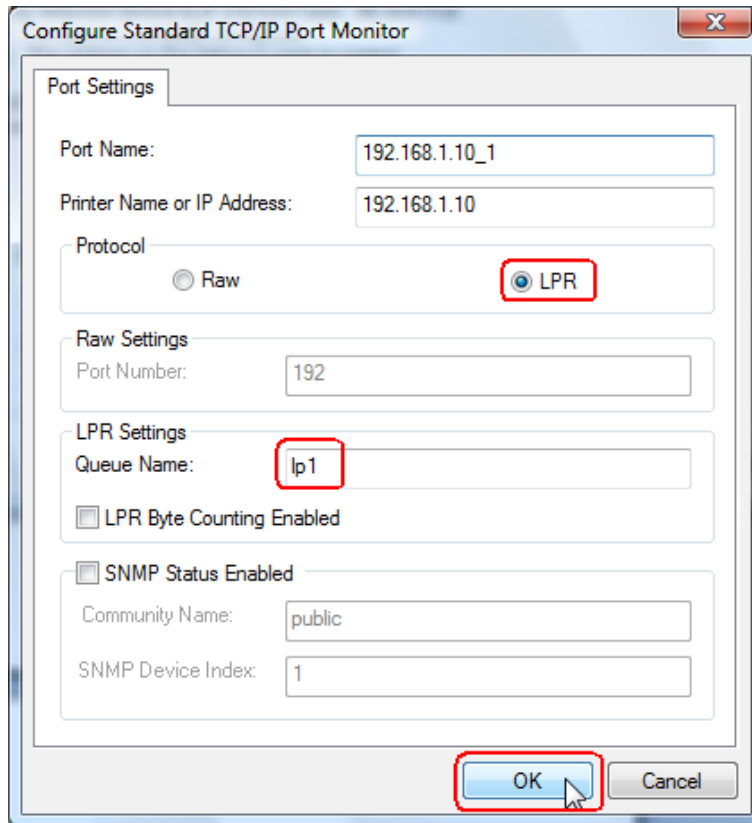


Figure C-6

- Click **Next** and then **Finish**, to complete the wizard.

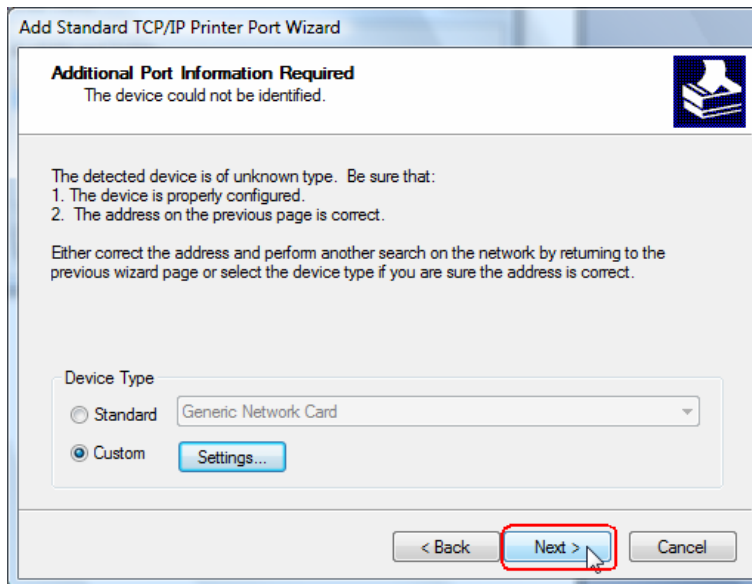


Figure C-7

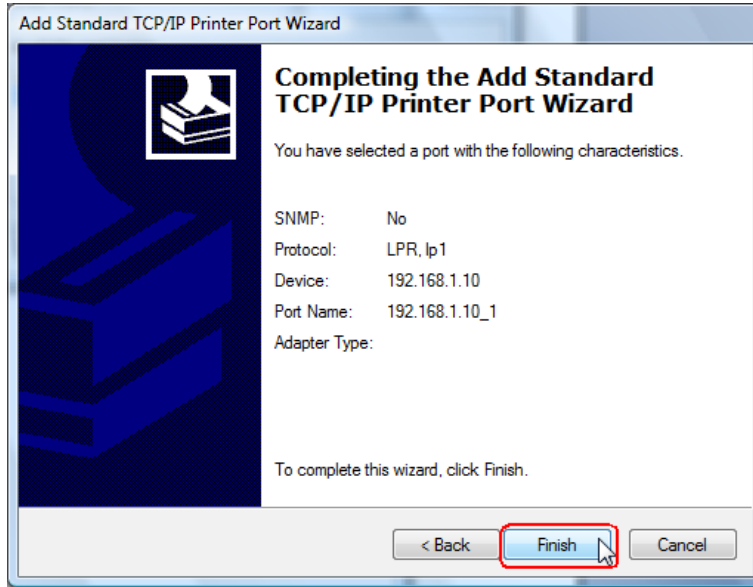


Figure C-8

8. Click **Close** and **Apply**.

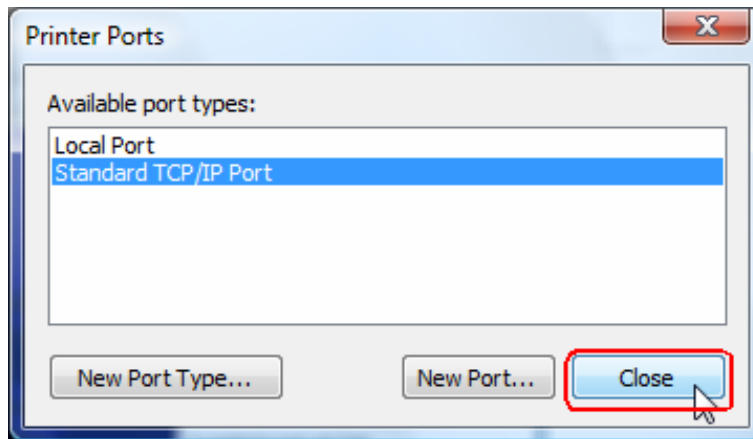


Figure C-9

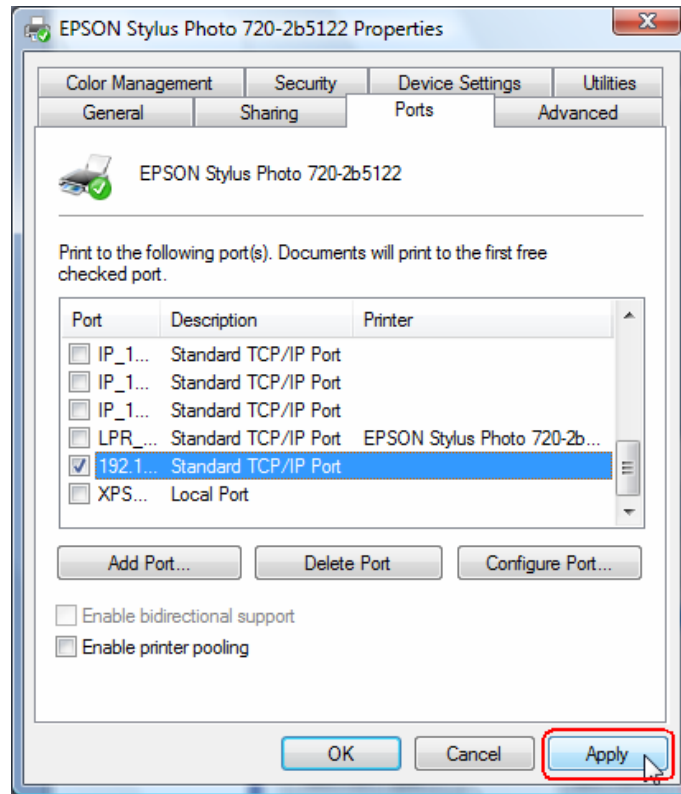


Figure C-10

9. Now, the printer port has been created.

C-2 If You Never Install a Printer Before

1. Click **Star > Control Panel**, and select **Devices and Printers**.

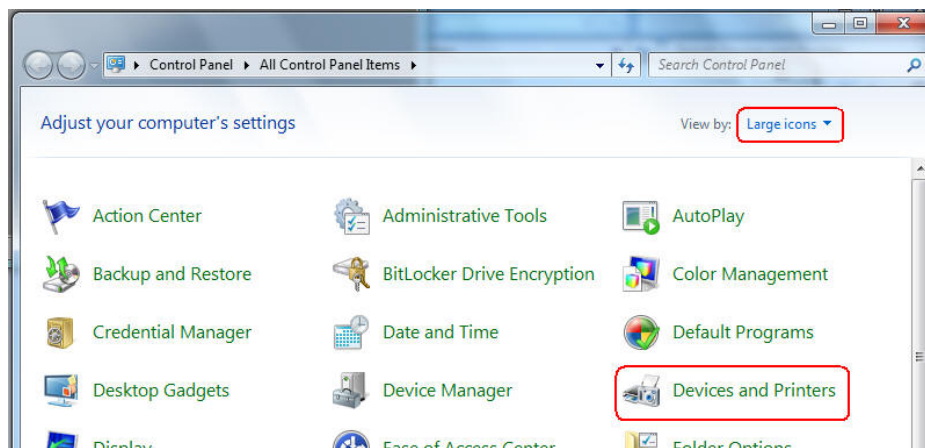


Figure C-11

2. Click **Add a printer**.

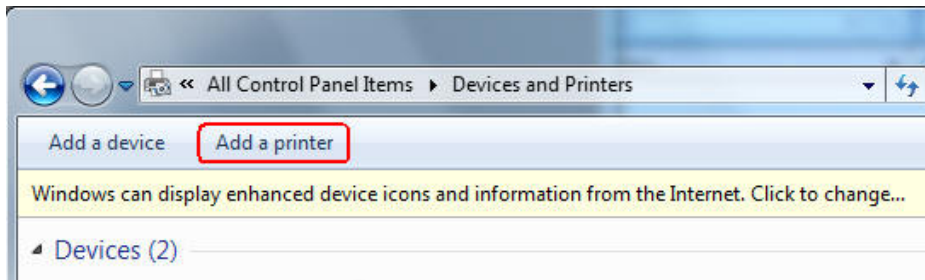


Figure C-12

3. Select **Add a local printer**.

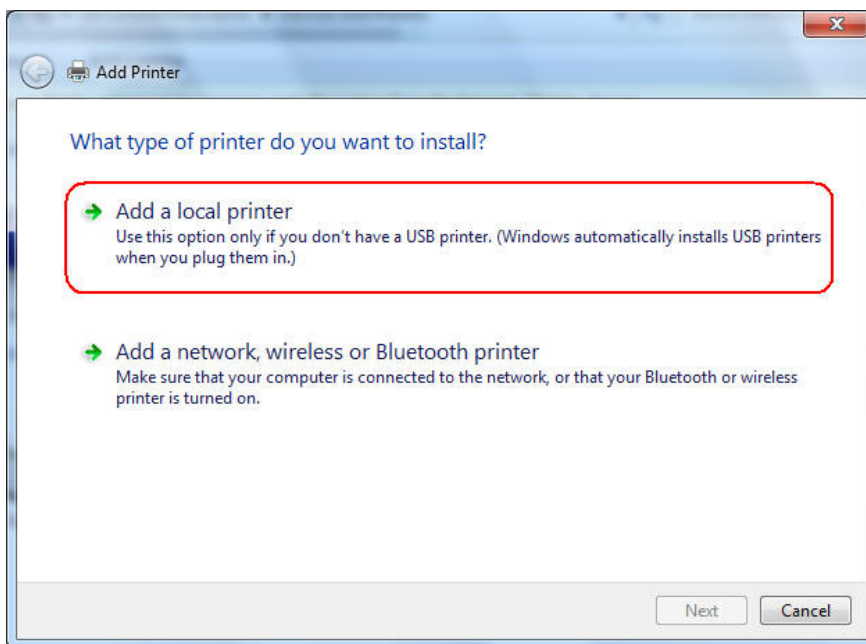


Figure C-13

4. Select “**Create a new port**”, and the type of port is “**Standard TCP/IP Port**”.

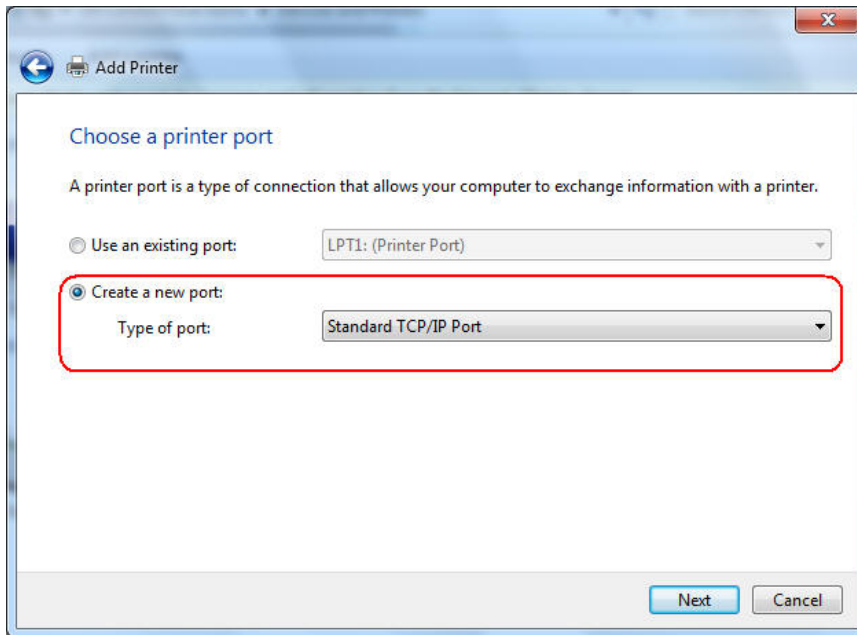


Figure C-14

5. Input the **IP address** of the print server and click **Next**. (You can login to the print server, and go to **Status** -> **TCP/IP** to find the **IP address** of print server. Here we take 192.168.1.10 for example.) The windows will detect the TCP/IP Port. Please wait for the next page.

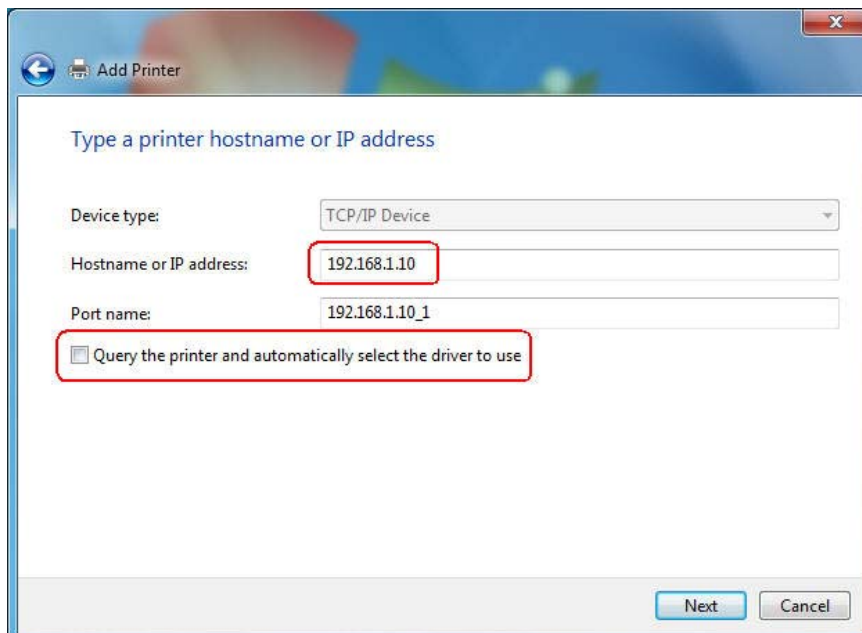


Figure C-15

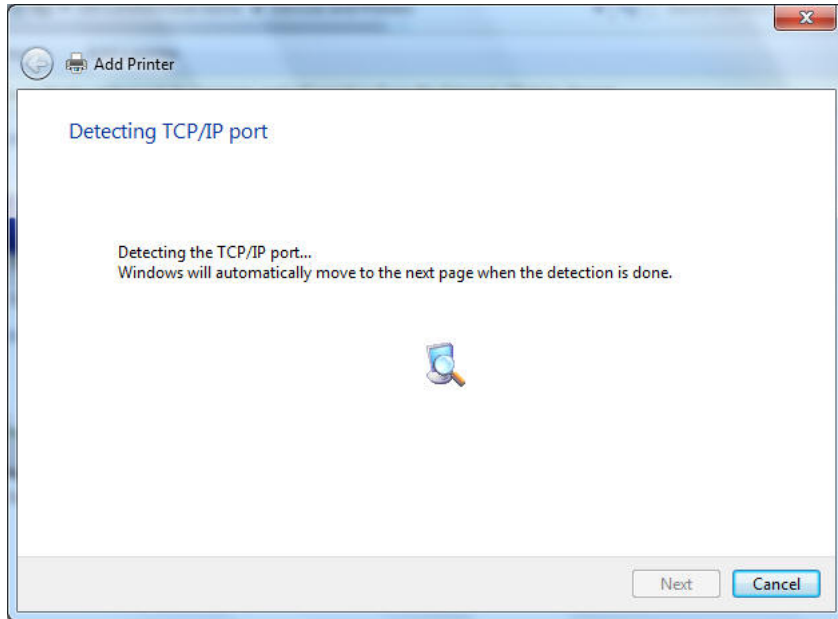


Figure C-16

- On the following page, select **Custom** and click **Settings**. And then on the next page, please select **LPR** as the Protocol and the Queue Name is **lp1**.

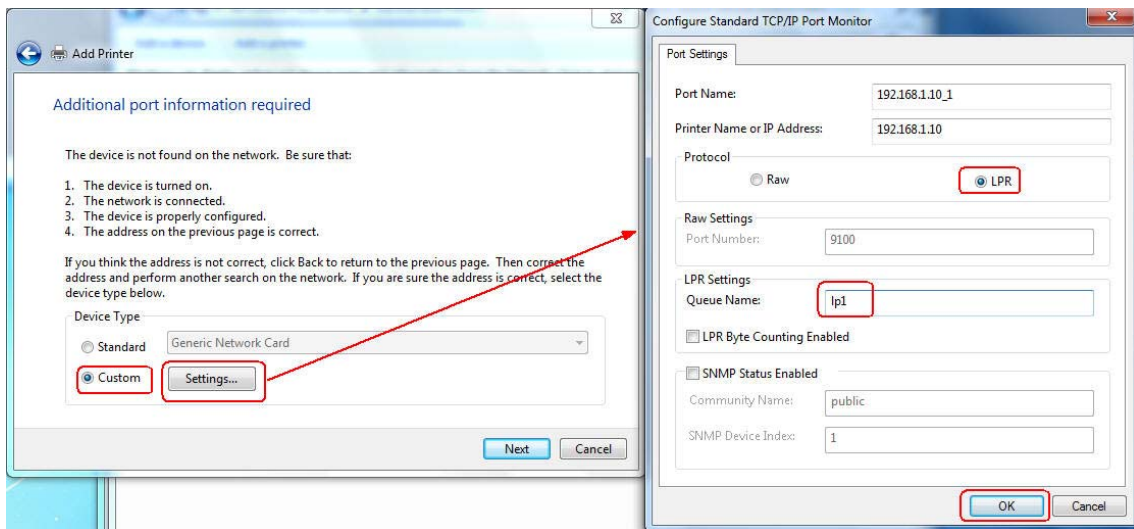


Figure C-17

- The windows will ask you to install the driver of the printer. You can select one in the list or click **Have Disk** to install other drivers. Please follow the steps to finish the installation.

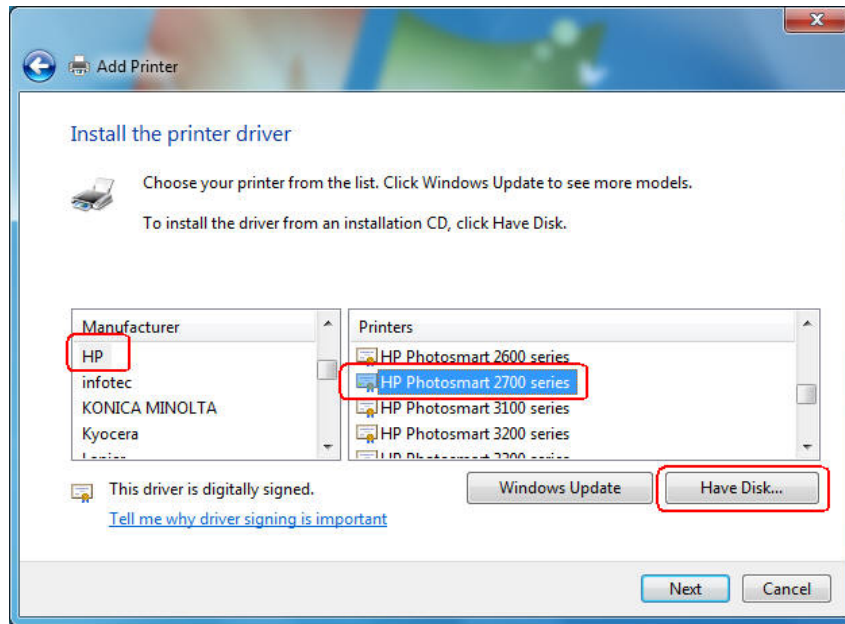


Figure C-18

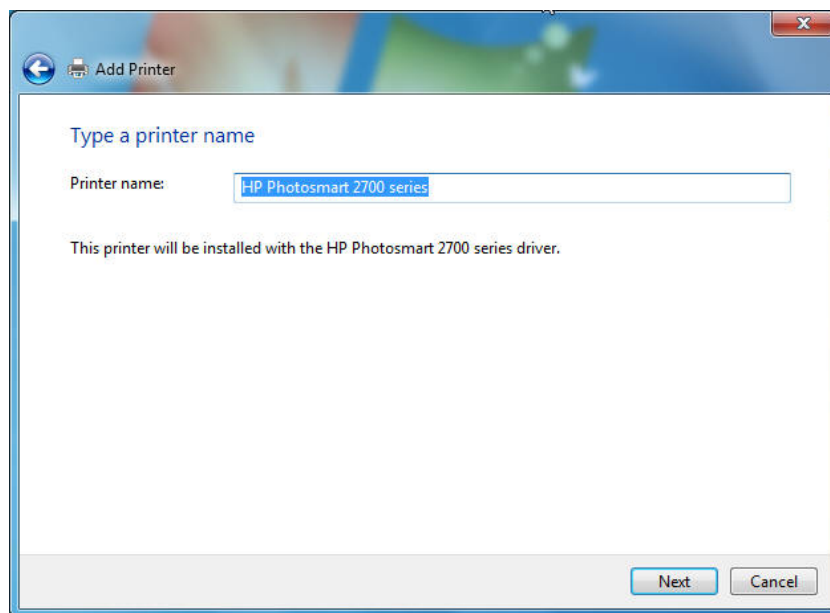


Figure C-19

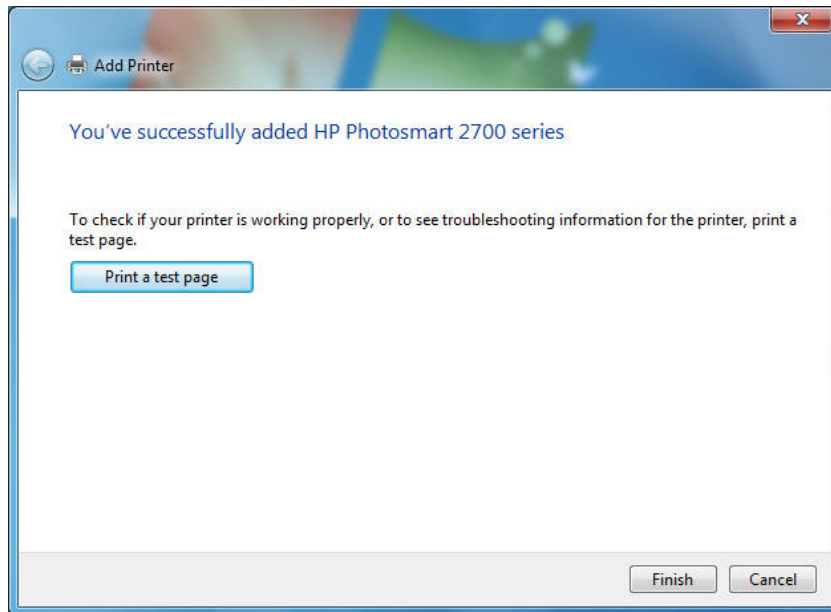


Figure C-20

8. After that, the new printer is in the list. And you can enjoy the sharing.

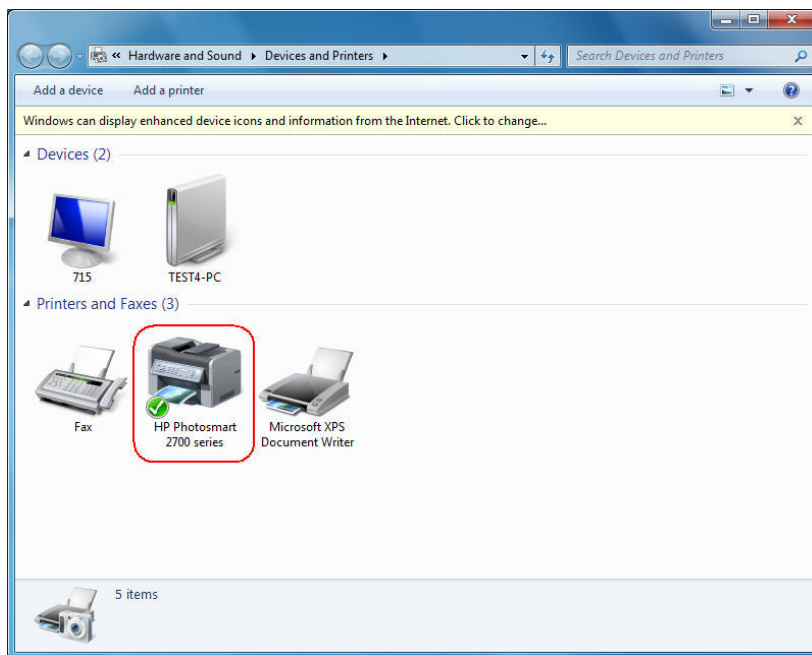


Figure C-21

Appendix D: Additional Installation Instructions

Panasonic KX-P6100/6300/6500

If you are using a Panasonic KX-P6100/6300/6500 laser printer with the print server through the **Network Print Port** under Windows 95/98, please redirect the printer named “**Panasonic KX-P6100 PCL**” or “**Panasonic KX-P6300 PCL**”, or “**Panasonic KX-P6500 PCL**” to the print server through the **Network Print Port**.

DO NOT redirect the printer named “Panasonic KX-P6100 GDI”, “Panasonic KX-P6300 GDI”, or “Panasonic KX-P6500 GDI” to the print server.

Please note that the print server doesn't support printing with host-based printers, e.g. CAPT, GDI, and PPA printers. Furthermore, the print server doesn't support any non-printing functions of MFP (Multiple Function Printer).

In case of static electricity or noise of power cable issue causes print server to disconnect, please re-plug the USB cable or re-start power to connect again.