

ENGLISH

Start: Attach the device to your computer using the cable provided.¹ Start the program accessible from the newly installed drive on your computer and follow the instructions on the device.

Settings: Press "X" to restart the device and to enter the settings menu. Toggle sound setting and review software version in the settings menu.

DEUTSCH

Inbetriebnahme: Verbinden Sie das Gerät unter Verwendung des beigelegten Kabels mit Ihrem Computer.² Starten Sie das Programm vom neu installierten Laufwerk auf Ihrem Computer und folgen Sie den Hinweisen auf dem Gerät.

Einstellungen: Drücken Sie „X“ um das Gerät neu zu starten und um das Einstellungs Menü anzuzeigen. Die Toneinstellungen und die Software-Version können darin eingesehen werden.

1 Note: Cable lengths beyond 3 m are not supported.
2 Hinweis: Kabel mit einer Länge über 3 m werden nicht unterstützt.

Made in China by Truly Semiconductors Ltd., 2/F, Chung Shun Knitting Centre, 1-3 Wing Yip Street, Kwai Chung, N.T., Hong Kong
EMC Dir. 2004/108/EC Article 9.2
EN 55022:2006+A1:2007 EMI Class B
FCC, Title 47, Part 15
EN 61000-3-3:2000 Class D – EN 61000-3-3:1995+A:2001
EN 55024:1998
IEC 61000-4-2:1995 – IEC 61000-4-3:1995 – IEC 61000-4-4:1995
IEC 61000-4-5:1995 – IEC 61000-4-6:1996 – IEC 61000-4-8:1993
IEC 61000-4-11:1994
WEEE (Waste Electric and Electronic Equipment) 2002/96/CE
RoHS (Restriction of Hazardous Substances) 2002/95/CE

FRANÇAIS

Mise en service: Connectez l'appareil à votre ordinateur au moyen du câble fourni.³ Lancez le programme du lecteur nouvellement installé et suivez les instructions fournies par l'appareil.

Réglage: Pressez «X» pour redémarrer l'appareil et pour accéder au menu de réglage. Le réglage du son et la version du logiciel peuvent être consultés sur le menu de réglage.

ITALIANO

Attivazione: Collegare il dispositivo al computer usando il cavo fornito nella confezione.⁴ Fare partire il programma attraverso il driver appena installato sul computer e seguire le istruzioni fornite dal display del dispositivo.

Configurazione: Premere «X» per far ripartire il dispositivo e per entrare nel menù di configurazione. Attivazione e disattivazione delle opzioni sonore ed identificazione della versione software sono disponibili nel menù di configurazione.

3 Note: Les câbles d'une longueur excédent 3 m ne sont pas supportés.
4 Attenzione: Cavo con una lunghezza di oltre 3 m non sono supportati.

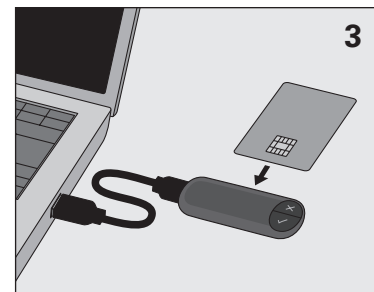
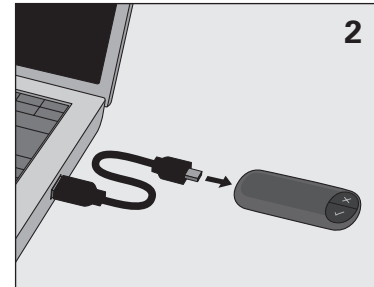
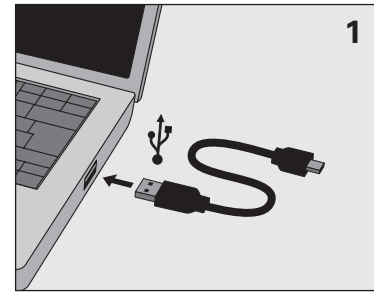
CANADA-ICES/NMB-003 Class/Classe (B)

Tested To Comply
With FCC Standards



FOR HOME OR OFFICE USE

Recycling information: <http://ztic.bluez.ch/recycling>



ENGLISH

Start: Attach the device to your computer using the cable provided.¹ Start the program accessible from the newly installed drive on your computer and follow the instructions on the device.

Settings: Press "X" to restart the device and to enter the settings menu. Toggle sound setting and review software version in the settings menu.

DEUTSCH

Inbetriebnahme: Verbinden Sie das Gerät unter Verwendung des beigelegten Kabels mit Ihrem Computer.² Starten Sie das Programm vom neu installierten Laufwerk auf Ihrem Computer und folgen Sie den Hinweisen auf dem Gerät.

Einstellungen: Drücken Sie „X“ um das Gerät neu zu starten und um das Einstellungs Menü anzuzeigen. Die Toneinstellungen und die Software-Version können darin eingesehen werden.

1 Note: Cable lengths beyond 3 m are not supported.
2 Hinweis: Kabel mit einer Länge über 3 m werden nicht unterstützt.

Made in China by Truly Semiconductors Ltd., 2/F, Chung Shun Knitting Centre, 1-3 Wing Yip Street, Kwai Chung, N.T., Hong Kong
EMC Dir. 2004/108/EC Article 9.2
EN 55022:2006+A1:2007 EMI Class B
FCC, Title 47, Part 15
EN 61000-3-3:2000 Class D – EN 61000-3-3:1995+A:2001
EN 55024:1998
IEC 61000-4-2:1995 – IEC 61000-4-3:1995 – IEC 61000-4-4:1995
IEC 61000-4-5:1995 – IEC 61000-4-6:1996 – IEC 61000-4-8:1993
IEC 61000-4-11:1994
WEEE (Waste Electric and Electronic Equipment) 2002/96/CE
RoHS (Restriction of Hazardous Substances) 2002/95/CE

FRANÇAIS

Mise en service: Connectez l'appareil à votre ordinateur au moyen du câble fourni.³ Lancez le programme du lecteur nouvellement installé et suivez les instructions fournies par l'appareil.

Réglage: Pressez «X» pour redémarrer l'appareil et pour accéder au menu de réglage. Le réglage du son et la version du logiciel peuvent être consultés sur le menu de réglage.

ITALIANO

Attivazione: Collegare il dispositivo al computer usando il cavo fornito nella confezione.⁴ Fare partire il programma attraverso il driver appena installato sul computer e seguire le istruzioni fornite dal display del dispositivo.

Configurazione: Premere «X» per far ripartire il dispositivo e per entrare nel menù di configurazione. Attivazione e disattivazione delle opzioni sonore ed identificazione della versione software sono disponibili nel menù di configurazione.

3 Note: Les câbles d'une longueur excédent 3 m ne sont pas supportés.
4 Attenzione: Cavo con una lunghezza di oltre 3 m non sono supportati.

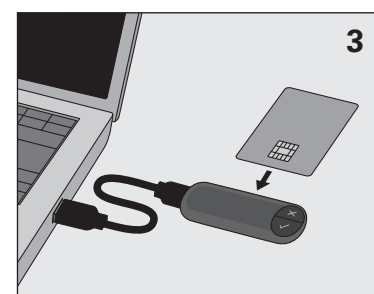
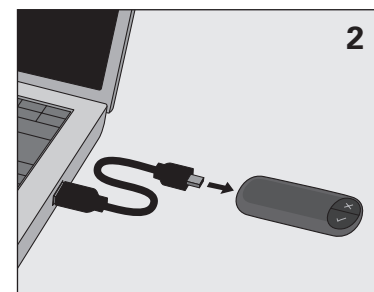
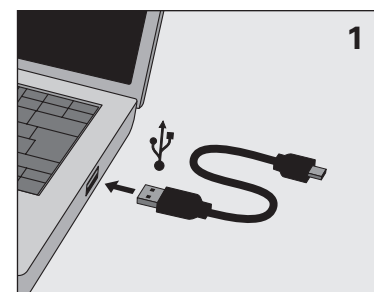
CANADA-ICES/NMB-003 Class/Classe (B)

Tested To Comply
With FCC Standards



FOR HOME OR OFFICE USE

Recycling information: <http://ztic.bluez.ch/recycling>





Environmental and WEEE Recycling and Disposal information

ENGLISH – Limitations (A) The device manufacturer (listed at the bottom of this page) believes the information provided below is accurate, but except to the extent required by law, makes no commitment, affirmation, or certification with respect to any of the information. Rather, all such information is provided "AS IS", without any express or implied warranty of any kind. The manufacturer reserves the right to update and modify this information without advance notice if it believes it is appropriate to do so. However, the manufacturer does not intend to provide any update or modification at any given time. (A1)

Product recycling and disposal (B) This unit must be recycled or discarded according to applicable local and national regulations. Owners of information technology (IT) equipment should responsibly recycle their equipment when it is no longer needed. There are a variety of product return programs and services in several countries to assist equipment owners in recycling their IT products. Information on manufacturer product recycling offerings can be found on the following Internet site at <http://ztic.bluez.ch/recycling> (B1)
Notice: This mark on Products applies to countries within the European Union (EU), Croatia, Iceland, Norway, and other jurisdictions requiring this symbol and corresponding product take-back programs.(B2)
Appliances are labelled in accordance with European Directive 2002/96/EC concerning waste electrical and electronic equipment (WEEE), Iceland Regulation Number 1104 on Electrical and Electronic Equipment Waste, and Norway Regulations on the Recovery and Treatment of Waste. These requirements determine the framework for the return and recycling of used appliances as applicable throughout these countries. This label is applied to various products to indicate that the product is not to be thrown away, but rather reclaimed upon end-of-life per the requirements. (B3) In accordance with the European WEEE Directive, Norway Regulations on the Recovery and Treatment of Waste, and other legal requirements in jurisdictions requiring the above product mark and corresponding take-back programs, electrical and electronic equipment (EEE) is to be collected separately and to be reused, recycled, or recovered at end-of-life. Users of EEE with the above WEEE marking must not dispose of end-of-life EEE as unsorted municipal waste, but use the collection framework available to customers for the return, recycling, and recovery of WEEE. Customer participation is important to minimize any potential effects of EEE on the environment and human health due to the potential presence of hazardous substances in EEE. For proper collection and treatment, contact your local waste and disposal organization representative. (B4)
In accordance with the **Croatia** Ordinance on the Management of Waste Electrical and Electronic Appliances and Equipment, electrical and electronic equipment (EEE) is to be collected separately and to be reused, recycled, or recovered at end of life. The symbol from Annex IV of this ordinance indicates the necessity of separate collection for electrical and electronic waste. Users of EEE with the above product mark must not dispose of end of life EEE as unsorted municipal waste, but use the collection framework available to customers for the return, recycling, and recovery of WEEE. Customer participation is important to minimize any potential effects of EEE on the environment and human health due to the potential presence of hazardous substances in EEE. (B5)
In **Italy**, unlawful disposal of the EEE product by the user involves the application of the sanctions provided under Legislative Decree Dlg 152/2006, article 254 or other applicable law. (B6)

In **Norway**, information for the return of EEE can be found at: <http://ztic.bluez.ch/recycling> (B7)
In **Sweden**, information for the collection of EEE can be found at: <http://ztic.bluez.ch/recycling> (B8)
For **Turkey**, This notice is effective as of 30 May 2009: Pursuant to Turkey's Directive on the Restriction of the Use of Certain Hazardous Substances in Electrical and Electronic Equipment (EEE Directive), this product as and when imported into Turkey after 30 May 2009 conforms to the EEE Directive. (C1)

DEUTSCH – Einschränkungen (A) Der Hersteller (gelistet am Ende dieser Seite) geht von der Richtigkeit der nachstehenden Informationen aus, schließt jedoch jegliche Verpflichtung, Gewährleistung oder Zertifizierung im Zusammenhang mit diesen Informationen über den gesetzlich vorgeschriebenen Umfang hinaus aus. Vielmehr stellt der Hersteller alle Informationen auf der Grundlage des gegenwärtigen Kenntnisstandes („as is“) ohne Übernahme jeglicher Gewähr, weder ausdrücklich noch stillschweigend, bereit. Der Hersteller behält sich das Recht vor, die vorliegenden Informationen nach eigenem Ermessen und ohne vorherige Ankündigung zu aktualisieren und zu verändern. Der Hersteller verpflichtet sich jedoch nicht, zu irgendeinem Zeitpunkt Aktualisierungen oder Änderungen bereitzustellen. (A1)

Hinweis zur Wiederverwertbarkeit und Entsorgung (B) – Hinweis: Diese Produktkennzeichnung gilt in den Mitgliedsländern der Europäischen Union (EU), Kroatien, Island, Norwegen und anderen Rechtsgebieten, in denen dieses Symbol und entsprechende Programme für die Produktücknahme vorgeschrieben sind. (B2) Gemäß der europäischen WEEE-Richtlinie, der norwegischen Verordnungen über die Abfallrücknahme und -behandlung sowie anderer gesetzlicher Bestimmungen in Rechtsgebieten, in denen die oben abgebildete Produktkennzeichnung sowie die entsprechenden Rücknahmeprogramme vorgeschrieben sind, müssen Elektro- und Elektronikalt- bzw. Schrottgeräte (EEE) am Ende ihrer Lebensdauer getrennt gesammelt und wiederverwertet, verwertet oder beseitigt werden. Nicht mehr verwendete Elektro- und Elektronikaltgeräte, die mit dem oben abgebildeten WEEE-Symbol gekennzeichnet sind, dürfen nicht über die Restmülltonne entsorgt, sondern müssen über die entsprechenden Sammelsysteme der Wiederverwendung, Verwertung oder Beseitigung zugeführt werden. Die Mitwirkung der Verbraucher ist wichtig, um mögliche Schädigungen der Umwelt und der menschlichen Gesundheit durch potenziell vorhandene Gefahrstoffe in Elektro- und Elektronikaltgeräten möglichst gering zu halten.

FRANÇAIS – Limitations (A) Le fabricant de ce produit (indiqué au bas de cette page) estime que les informations fournies ci-dessous sont exactes; toutefois, à l'exception des exigences édictées par la réglementation en vigueur, ces informations ne constituent pas, pour le fabricant, un quelconque engagement, affirmation ou certification. Ces informations sont fournies "EN LETAT" par le fabricant, sans garantie d'aucune sorte (explicite ou implicite). Le fabricant se réserve le droit de mettre à jour et de modifier ces informations sans préavis si il le juge approprié. Toutefois, le fabricant ne prévoit pas de fournir une mise à jour ou une modification à une période donnée. (A1)

Recyclage ou mise au rebut des produits (B) – Remarque: Le marquage apposé sur les produits s'applique aux pays de l'Union Européenne (EU), à la Croatie, à l'Islande, à la Norvège et aux autres juridictions nécessitant ce symbole, ainsi qu'aux programmes de reprise de produits correspondants. (B2) Conformément à la Directive européenne DEEE, à la réglementation norvégienne en matière de récupération et de traitement des déchets et aux autres réglementations des juridictions nécessitant le marquage ci-dessus, ainsi qu'aux programmes de reprise correspondants, les équipements électriques et électroniques (EEE) doivent être collectés séparément et réutilisés, recyclés ou récupérés en fin de vie. Les utilisateurs d'équipements électriques et électroniques (EEE) portant la marque DEEE ci-dessus ne doivent pas mettre au rebut ces équipements EEE en fin de vie comme des déchets municipaux non triés, mais ils doivent utiliser la structure de collecte mise à disposition des clients pour le retour, le recyclage et la récupération des déchets d'équipements électriques et électroniques. La participation des clients est essentielle pour réduire tout effet potentiel des équipements électriques et électroniques sur l'environnement et la santé en raison de la présence possible de substances dangereuses dans ces équipements. Pour assurer une collecte et un traitement approprié, adressez-vous à l'interlocuteur de votre municipalité. (B4)

ITALIANO – Limitazioni (A) Il produttore del dispositivo (elencato sul fondo di questa pagina) ritiene che le informazioni fornite di seguito siano accurate, ma salvo nei limiti previsti dalla legge, non rilascia alcun impegno, affermazione o certificazione relativa a una qualsiasi informazione. Le informazioni sono fornite "NELLO STATO IN CUI SI TROVANO", senza garanzia esplicita o implicita di qualsivoglia genere. Il produttore si riserva il diritto di aggiornare e modificare queste informazioni senza preavviso qualora il produttore lo ritenga appropriato. Tuttavia, il produttore non intende fornire alcun aggiornamento o modifica in nessun momento. (A1)

Riciclo e smaltimento del prodotto (B) – Avviso: Questo marchio sui Prodotti si applica ai paesi all'interno dell'Unione Europea (UE), Croazia, Islanda, Norvegia e altre giurisdizioni che richiedono questo simbolo e i programmi di restituzione del prodotto corrispondenti. (B2) In conformità con la Direttiva Europea WEEE, alla Normativa della Norvegia sul Recupero e Trattamento dei Rifiuti e ad altri requisiti legali in giurisdizioni che richiedono il suddetto marchio del prodotto e i programmi di restituzione corrispondenti, le apparecchiature elettriche ed elettroniche dismesse (EEE) devono essere raccolte separatamente per essere riutilizzate, riciclate e recuperate. Gli utenti di EEE con il suddetto marchio WEEE non devono smaltire EEE dismesse come rifiuti municipali non differenziati, ma utilizzare il servizio di raccolta disponibile ai clienti per la restituzione, il riciclo e il recupero di WEEE. La collaborazione dei clienti è fondamentale per ridurre qualsiasi danno potenziale di EEE sull'ambiente e sulla salute umana dovuto alla presenza potenziale di sostanze nocive in EEE. Per una raccolta e un trattamento appropriati, contattare l'organizzazione locale per lo smaltimento differenziato. (B4) In Italia, lo smaltimento illegale di prodotti EEE da parte dell'utente comporterà l'applicazione delle sanzioni previste in base al Decreto Legislativo Dlg 152/2006, articolo 254 o ad altre leggi applicabili. (B6)

FCC Caution

Any Changes or modifications not expressly approved by the party responsible for compliance could void the user's authority to operate the equipment. This device complies with part 15 of the FCC Rules. Operation is subject to the following two conditions: (1) This device may not cause harmful interference, and (2) this device must accept any interference received, including interference that may cause undesired operation.

IMPORTANT NOTE: This equipment has been tested and found to comply with the limits for a Class B digital device, pursuant to part 15 of the FCC Rules. These limits are designed to provide reasonable protection against harmful interference in a residential installation. This equipment generates, uses and can radiate radio frequency energy and, if not installed and used in accordance with the instructions, may cause harmful interference to radio communications. However, there is no guarantee that interference will not occur in a particular installation. If this equipment does cause harmful interference to radio or television reception, which can be determined by turning the equipment off and on, the user is encouraged to try to correct the interference by one or more of the following measures:

- Reorient or relocate the receiving antenna.
- Increase the separation between the equipment and receiver.
- Connect the equipment into an outlet on a circuit different from that to which the receiver is connected.
- Consult the dealer or an experienced radio/TV technician for help.

This device has been manufactured by:

Truly Semiconductors Ltd.
2/F, Chung Shun Knitting Centre, 1-3 Wing Yip Street
Kwai Chung, N.T., Hong Kong, CHINA



Environmental and WEEE Recycling and Disposal information

ENGLISH – Limitations (A) The device manufacturer (listed at the bottom of this page) believes the information provided below is accurate, but except to the extent required by law, makes no commitment, affirmation, or certification with respect to any of the information. Rather, all such information is provided "AS IS", without any express or implied warranty of any kind. The manufacturer reserves the right to update and modify this information without advance notice if it believes it is appropriate to do so. However, the manufacturer does not intend to provide any update or modification at any given time. (A1)

Product recycling and disposal (B) This unit must be recycled or discarded according to applicable local and national regulations. Owners of information technology (IT) equipment should responsibly recycle their equipment when it is no longer needed. There are a variety of product return programs and services in several countries to assist equipment owners in recycling their IT products. Information on manufacturer product recycling offerings can be found on the following Internet site at <http://ztic.bluez.ch/recycling> (B1)
Notice: This mark on Products applies to countries within the European Union (EU), Croatia, Iceland, Norway, and other jurisdictions requiring this symbol and corresponding product take-back programs.(B2)
Appliances are labelled in accordance with European Directive 2002/96/EC concerning waste electrical and electronic equipment (WEEE), Iceland Regulation Number 1104 on Electrical and Electronic Equipment Waste, and Norway Regulations on the Recovery and Treatment of Waste. These requirements determine the framework for the return and recycling of used appliances as applicable throughout these countries. This label is applied to various products to indicate that the product is not to be thrown away, but rather reclaimed upon end-of-life per the requirements. (B3) In accordance with the European WEEE Directive, Norway Regulations on the Recovery and Treatment of Waste, and other legal requirements in jurisdictions requiring the above product mark and corresponding take-back programs, electrical and electronic equipment (EEE) is to be collected separately and to be reused, recycled, or recovered at end-of-life. Users of EEE with the above WEEE marking must not dispose of end-of-life EEE as unsorted municipal waste, but use the collection framework available to customers for the return, recycling, and recovery of WEEE. Customer participation is important to minimize any potential effects of EEE on the environment and human health due to the potential presence of hazardous substances in EEE. For proper collection and treatment, contact your local waste and disposal organization representative. (B4)
In accordance with the **Croatia** Ordinance on the Management of Waste Electrical and Electronic Appliances and Equipment, electrical and electronic equipment (EEE) is to be collected separately and to be reused, recycled, or recovered at end of life. The symbol from Annex IV of this ordinance indicates the necessity of separate collection for electrical and electronic waste. Users of EEE with the above product mark must not dispose of end of life EEE as unsorted municipal waste, but use the collection framework available to customers for the return, recycling, and recovery of WEEE. Customer participation is important to minimize any potential effects of EEE on the environment and human health due to the potential presence of hazardous substances in EEE. (B5)
In **Italy**, unlawful disposal of the EEE product by the user involves the application of the sanctions provided under Legislative Decree Dlg 152/2006, article 254 or other applicable law. (B6)

In **Norway**, information for the return of EEE can be found at: <http://ztic.bluez.ch/recycling> (B7)
In **Sweden**, information for the collection of EEE can be found at: <http://ztic.bluez.ch/recycling> (B8)
For **Turkey**, This notice is effective as of 30 May 2009: Pursuant to Turkey's Directive on the Restriction of the Use of Certain Hazardous Substances in Electrical and Electronic Equipment (EEE Directive), this product as and when imported into Turkey after 30 May 2009 conforms to the EEE Directive. (C1)

DEUTSCH – Einschränkungen (A) Der Hersteller (gelistet am Ende dieser Seite) geht von der Richtigkeit der nachstehenden Informationen aus, schließt jedoch jegliche Verpflichtung, Gewährleistung oder Zertifizierung im Zusammenhang mit diesen Informationen über den gesetzlich vorgeschriebenen Umfang hinaus aus. Vielmehr stellt der Hersteller alle Informationen auf der Grundlage des gegenwärtigen Kenntnisstandes („as is“) ohne Übernahme jeglicher Gewähr, weder ausdrücklich noch stillschweigend, bereit. Der Hersteller behält sich das Recht vor, die vorliegenden Informationen nach eigenem Ermessen und ohne vorherige Ankündigung zu aktualisieren und zu verändern. Der Hersteller verpflichtet sich jedoch nicht, zu irgendeinem Zeitpunkt Aktualisierungen oder Änderungen bereitzustellen. (A1)

Hinweis zur Wiederverwertbarkeit und Entsorgung (B) – Hinweis: Diese Produktkennzeichnung gilt in den Mitgliedsländern der Europäischen Union (EU), Kroatien, Island, Norwegen und anderen Rechtsgebieten, in denen dieses Symbol und entsprechende Programme für die Produktücknahme vorgeschrieben sind. (B2) Gemäß der europäischen WEEE-Richtlinie, der norwegischen Verordnungen über die Abfallrücknahme und -behandlung sowie anderer gesetzlicher Bestimmungen in Rechtsgebieten, in denen die oben abgebildete Produktkennzeichnung sowie die entsprechenden Rücknahmeprogramme vorgeschrieben sind, müssen Elektro- und Elektronikalt- bzw. Schrottgeräte (EEE) am Ende ihrer Lebensdauer getrennt gesammelt und wiederverwertet, verwertet oder beseitigt werden. Nicht mehr verwendete Elektro- und Elektronikaltgeräte, die mit dem oben abgebildeten WEEE-Symbol gekennzeichnet sind, dürfen nicht über die Restmülltonne entsorgt, sondern müssen über die entsprechenden Sammelsysteme der Wiederverwendung, Verwertung oder Beseitigung zugeführt werden. Die Mitwirkung der Verbraucher ist wichtig, um mögliche Schädigungen der Umwelt und der menschlichen Gesundheit durch potenziell vorhandene Gefahrstoffe in Elektro- und Elektronikaltgeräten möglichst gering zu halten.

FRANÇAIS – Limitations (A) Le fabricant de ce produit (indiqué au bas de cette page) estime que les informations fournies ci-dessous sont exactes; toutefois, à l'exception des exigences édictées par la réglementation en vigueur, ces informations ne constituent pas, pour le fabricant, un quelconque engagement, affirmation ou certification. Ces informations sont fournies "EN LETAT" par le fabricant, sans garantie d'aucune sorte (explicite ou implicite). Le fabricant se réserve le droit de mettre à jour et de modifier ces informations sans préavis si il le juge approprié. Toutefois, le fabricant ne prévoit pas de fournir une mise à jour ou une modification à une période donnée. (A1)

Recyclage ou mise au rebut des produits (B) – Remarque: Le marquage apposé sur les produits s'applique aux pays de l'Union Européenne (EU), à la Croatie, à l'Islande, à la Norvège et aux autres juridictions nécessitant ce symbole, ainsi qu'aux programmes de reprise de produits correspondants. (B2) Conformément à la Directive européenne DEEE, à la réglementation norvégienne en matière de récupération et de traitement des déchets et aux autres réglementations des juridictions nécessitant le marquage ci-dessus, ainsi qu'aux programmes de reprise correspondants, les équipements électriques et électroniques (EEE) doivent être collectés séparément et réutilisés, recyclés ou récupérés en fin de vie. Les utilisateurs d'équipements électriques et électroniques (EEE) portant la marque DEEE ci-dessus ne doivent pas mettre au rebut ces équipements EEE en fin de vie comme des déchets municipaux non triés, mais ils doivent utiliser la structure de collecte mise à disposition des clients pour le retour, le recyclage et la récupération des déchets d'équipements électriques et électroniques. La participation des clients est essentielle pour réduire tout effet potentiel des équipements électriques et électroniques sur l'environnement et la santé en raison de la présence possible de substances dangereuses dans ces équipements. Pour assurer une collecte et un traitement approprié, adressez-vous à l'interlocuteur de votre municipalité. (B4)

ITALIANO – Limitazioni (A) Il produttore del dispositivo (elencato sul fondo di questa pagina) ritiene che le informazioni fornite di seguito siano accurate, ma salvo nei limiti previsti dalla legge, non rilascia alcun impegno, affermazione o certificazione relativa a una qualsiasi informazione. Le informazioni sono fornite "NELLO STATO IN CUI SI TROVANO", senza garanzia esplicita o implicita di qualsivoglia genere. Il produttore si riserva il diritto di aggiornare e modificare queste informazioni senza preavviso qualora il produttore lo ritenga appropriato. Tuttavia, il produttore non intende fornire alcun aggiornamento o modifica in nessun momento. (A1)

Riciclo e smaltimento del prodotto (B) – Avviso: Questo marchio sui Prodotti si applica ai paesi all'interno dell'Unione Europea (UE), Croazia, Islanda, Norvegia e altre giurisdizioni che richiedono questo simbolo e i programmi di restituzione del prodotto corrispondenti. (B2) In conformità con la Direttiva Europea WEEE, alla Normativa della Norvegia sul Recupero e Trattamento dei Rifiuti e ad altri requisiti legali in giurisdizioni che richiedono il suddetto marchio del prodotto e i programmi di restituzione corrispondenti, le apparecchiature elettriche ed elettroniche dismesse (EEE) devono essere raccolte separatamente per essere riutilizzate, riciclate e recuperate. Gli utenti di EEE con il suddetto marchio WEEE non devono smaltire EEE dismesse come rifiuti municipali non differenziati, ma utilizzare il servizio di raccolta disponibile ai clienti per la restituzione, il riciclo e il recupero di WEEE. La collaborazione dei clienti è fondamentale per ridurre qualsiasi danno potenziale di EEE sull'ambiente e sulla salute umana dovuto alla presenza potenziale di sostanze nocive in EEE. Per una raccolta e un trattamento appropriati, contattare l'organizzazione locale per lo smaltimento differenziato. (B4) In Italia, lo smaltimento illegale di prodotti EEE da parte dell'utente comporterà l'applicazione delle sanzioni previste in base al Decreto Legislativo Dlg 152/2006, articolo 254 o ad altre leggi applicabili. (B6)

FCC Caution

Any Changes or modifications not expressly approved by the party responsible for compliance could void the user's authority to operate the equipment. This device complies with part 15 of the FCC Rules. Operation is subject to the following two conditions: (1) This device may not cause harmful interference, and (2) this device must accept any interference received, including interference that may cause undesired operation.

IMPORTANT NOTE: This equipment has been tested and found to comply with the limits for a Class B digital device, pursuant to part 15 of the FCC Rules. These limits are designed to provide reasonable protection against harmful interference in a residential installation. This equipment generates, uses and can radiate radio frequency energy and, if not installed and used in accordance with the instructions, may cause harmful interference to radio communications. However, there is no guarantee that interference will not occur in a particular installation. If this equipment does cause harmful interference to radio or television reception, which can be determined by turning the equipment off and on, the user is encouraged to try to correct the interference by one or more of the following measures:

- Reorient or relocate the receiving antenna.
- Increase the separation between the equipment and receiver.
- Connect the equipment into an outlet on a circuit different from that to which the receiver is connected.
- Consult the dealer or an experienced radio/TV technician for help.

This device has been manufactured by:

Truly Semiconductors Ltd.
2/F, Chung Shun Knitting Centre, 1-3 Wing Yip Street
Kwai Chung, N.T., Hong Kong, CHINA

