

RC650 User Manual:

Open the battery cover,install three AAA batteries,and then you can operation the remote control freely. The digital button 0~9 are channel shortcut keys. And other keys are corresponding function keys.But it is important to note that mouse and voice key are only RF radio button.

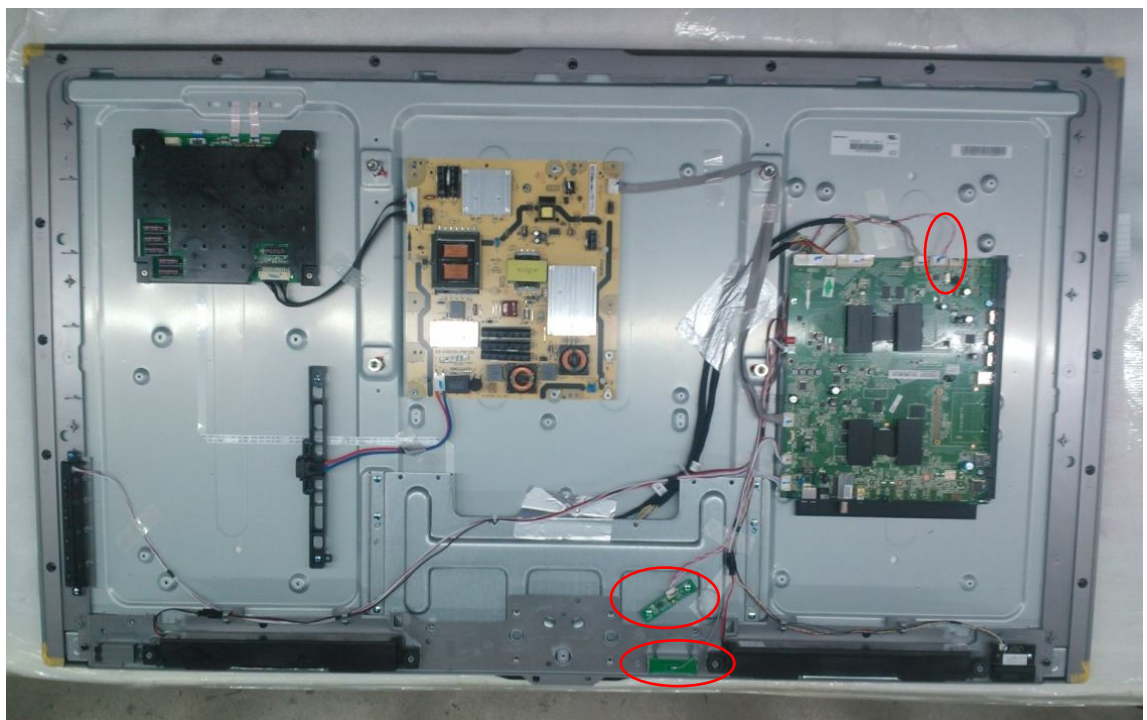
Remote Control Paring:

Press volume+ and volume- 2 seconds at the same time,the remote control will access paring and the “information window” will shine green with 2HZ 50% duty cycle. After paring success,the green light blink several times with 8HZ 50% duty cycle and bright 1 second before extinguished. If it continued paring 20 seconds and unsuccessed,green light will go out and exit paring.

RC650D Install instruction:

Fix the dongle and antenna to the specific position,just as the below picture,connect the antenna to the dongle antenna interface,and connect the dongle to the motherboard interface through USB interface.And by the USB interface, motherboard give 5V DC to the dongle .

The end product must carry a label stating "Contains FCC ID:W8URC650D" □.



FCC information:

This device complies with part 15 of the FCC Rules. Operation is subject to the following two conditions: (1) This device may not cause harmful interference, and (2) this device must accept any interference received, including interference that may cause undesired operation.

Changes or modifications not expressly approved by the party responsible for compliance could void the user's authority to operate the equipment.