



User's Guide

eo™ a7330

7" UMPC



Preface



This manual will help you get the most out of your new **eo™ Ultra-Mobile PC**. If you are a new computer user, or just new to Tablet PCs, read through this manual carefully before first using your **eo** Ultra-Mobile PC. If after reading this manual you still have questions, visit us online at www.tabletkiosk.com for additional resources and information on using your **eo a7330** Ultra-Mobile PC.

Copyright

©2009 Sand Dune Ventures, Inc. All Rights Reserved. All product information is subject to change without notice. **eo**, the **eo** logo, **TabletKiosk** and the **TabletKiosk** logo are registered trademarks or trademarks of Sand Dune Ventures, Inc. in the United States and/or other countries. Microsoft Windows, Windows XP, Windows Vista, and the Windows logo are either registered trademarks or trademarks of Microsoft Corporation in the United States and/or other countries. Intel, the Intel logo, Intel Atom, and Atom inside are trademarks of Intel Corporation in the U.S. and other countries. The Bluetooth® word mark and logos are owned by the Bluetooth SIG, Inc. and any use of such marks by **TabletKiosk** is under license. **openSUSE** and **SUSE** are trademarks of Novell, Inc. in the United States and other countries. **Linux** is a registered trademark of Linus Torvalds.

Disclaimer

The specifications and information in this manual are subject to change without prior notice in order to improve reliability, design and/or function. In no way does this represent a commitment on the part of the manufacturer. The manufacturer assumes no responsibility for errors or omissions in this document.

In no event will the manufacturer be liable for direct, indirect, special, incidental, or consequential damages arising from the use, or inability to use, the Ultra-Mobile PC or this documentation, even if advised of the possibility of such damages.

This document contains proprietary information protected by copyright laws. All rights are reserved. No part of this manual may be reproduced by any mechanical, electronic, or other means in any form without prior written permission of TabletKiosk.

If you have any questions regarding the eo Ultra-Mobile PC, or the information contained within this manual, please contact TabletKiosk at info@tabletkiosk.com.

Important Safety Instructions

For your own safety and the safety of your equipment, please follow these rules for the handling and care of your eo Ultra-Mobile PC. Keep this User's Manual for future reference by you and other users.

Never use sprays, liquids or cleaning detergents to clean the eo Ultra-Mobile PC. Use a micro fiber cloth to clean the touch screen. Avoid the use of tissue paper since tissue fibers can easily lodge between the touch screen and the top cover of the tablet.

Never pour liquids into any opening or directly on the eo Ultra-Mobile PC. This could result in fire or electrical shock.

Check that the voltage range of the power outlet is between 100V and 240V before connecting the eo Ultra-Mobile PC.

Exceeding the maximum rated voltage may cause damage to the AC adapter or to the eo Ultra-Mobile PC. This could result in fire or electrical shock.

When the AC adapter is plugged into an electrical outlet, place the power cord so it will not be stepped on or walked on. Do not place objects over or on the power cord.

Use the eo Ultra-Mobile PC in a clean, dry, temperature controlled environment. Do not use the eo Ultra-Mobile PC in areas of high humidity, around water (for example: near a bathtub, washbowl, kitchen sink or laundry tub, in a wet basement or near a swimming pool) or outdoors while it is raining.

Never open or disassemble the eo Ultra-Mobile PC. For safety reasons, and to prevent permanent damage, the equipment should only be repaired by qualified service personnel.

Contact a qualified service center if any of the following issues should arise:

1. AC adapter, power cord or plug is damaged;
2. Liquid has been spilled into the eo Ultra-Mobile PC;
3. The eo Ultra-Mobile PC has been exposed to excessive moisture;
4. The eo Ultra-Mobile PC exhibits errors and/or does not function according to specifications;
5. The eo Ultra-Mobile PC has been dropped or otherwise physically damaged.

Caution

Lithium-Ion batteries can be dangerous. There is a danger of explosion if the battery is incorrectly replaced. Replace only with the same or equivalent type recommended by the manufacturer. Dispose of used batteries according to state or local hazardous waste requirements.

Under no circumstances should the user attempt to disassemble the power supply. The power supply has no user-replaceable parts and its insides contain components that are electrically-charged with hazardous voltage levels that can cause serious personal injury. A defective power supply must be returned to your dealer.

Safety Notices for the Power Cord

This equipment has a 2 or 3-wire power cord. Replace the power cord if it becomes damaged. Contact your dealer for an exact replacement.

In the U.S.A. and Canada, the power cord must be a UL-listed detachable power cord (in Canada, CSA-certified).

2-wire cord	SPT-2 18AWG
3-wire cord	SVT or SJT, 18 AWG, 3-conductor

The cord should be provided with a molded-on cord connector body at the other end. The cord length must not exceed 3 meters (9.8 feet).

Outside the U.S.A. and Canada, the plug must be rated for 250 VAC, 2.5 amp minimum, and must display an international agency approval marking. The cord must be suitable for use in the end-user's country. Consult your dealer or the local electrical authorities if you are unsure of the type of power cord to use in your country. Voltage changes occur automatically in the power supply.

Notice of FCC Compliance

a. Federal Communications Commission (FCC) Requirements, Part 15:

This device complies with Part 15 of the FCC rules.

Operation is subject to the following two conditions:

1. this device may not cause harmful interference, and
2. this device must accept any interference received, including interference that may cause undesired operation.

This equipment has been tested and found to comply with the limits for a Class B digital device, pursuant to Part 15 of the FCC Rules. These limits are designed to provide reasonable protection against harmful interference in a residential installation. This equipment generates, uses, and can radiate radio frequency energy and if not installed and used in accordance with the instruction manual may cause harmful interference to radio communications. However, there is no guarantee that interference will not occur in a particular installation. If this equipment does cause harmful interference to radio or television reception, which can be determined by turning the equipment off and on, the user is encouraged to try to correct the interference by one or more of the following measures:

- ❖ Reorient or relocate the receiving antenna.
- ❖ Increase the separation between the equipment and the receiver.
- ❖ Connect the equipment into an outlet on a circuit different from that to which the receiver is connected.
- ❖ Consult the dealer or an experienced technician for help.
- ❖ Use only shielded I/O cables to connect I/O devices to this equipment.

You are cautioned that any changes or modifications not expressly approved by TabletKiosk could void your authority to use the equipment.

b. Regulatory information / Disclaimers

This device must be installed and used in strict accordance with the instructions included in the user documentation provided with the product. Any changes or modifications (including the antennas) made to this device that are not

expressly approved by the manufacturer may void the user's authority to operate the equipment. The manufacturer is not responsible for any radio or television interference caused by unauthorized modification of this device, or the substitution of the connecting cables and equipment other than the ones specified by manufacturer. It is the responsibility of the user to correct any interference caused by such unauthorized modification, substitution or attachment. The manufacturer and its authorized resellers or distributors will assume no liability for any damage or violation of government regulations arising from the failure to comply with these guidelines.

c. For portable devices without a co-location condition (eg. notebook pc)

FCC RF Radiation Exposure Statement:

1. This Transmitter must not be co-located or operating in conjunction with any other antenna or transmitter.
2. This equipment complies with FCC RF radiation exposure limits set forth for an uncontrolled environment. This device was tested for typical lap-held operations with the device contacted directly to the human body to the back side of the Tablet PC. To maintain compliance with FCC RF exposure compliance requirements, please follow operation instruction as documented in this manual.

The availability of some specific channels and/or operational frequency bands are country dependent and are firmware programmed at the factory to match the intended destination. The firmware setting is not accessible by the end user.

d. SAR Exposure

This device has been tested for compliance with FCC RF Exposure (SAR) limits in typical flat configurations.

In order to comply with SAR limits established in the ANSI C95.1 standards, it is recommended that the integrated antenna is positioned more than 1.5cm from your body or

from nearby persons during extended periods of operation. If the antenna is positioned less than 1.5 cm (0.6 inches) from the user, it is recommended that the user limit the exposure time.

FCC Statement to Users for the Fax/Modem

Notice of FCC Compliance for the Fax/Modem

This equipment complies with Part 68 of the FCC rules. The FCC Registration Number and Ringer Equivalence Number for this equipment are located on a label at the bottom of this equipment. IF REQUESTED, THIS INFORMATION MUST BE GIVEN TO THE TELEPHONE COMPANY.

The REN helps to determine the number of devices you may connect to your telephone line while allowing all of those devices to ring when your telephone number is called. In most, but not all areas, the amount of devices connected to one line should not exceed five (5).

To know precisely how many devices you may connect to your line, as determined by the REN, you should contact your local telephone company to determine the maximum REN for your calling area.

If your telephone equipment causes harm to the telephone network, the telephone company may disconnect your service temporarily. They may notify you in advance, but if advance notice is not practical, you will be informed of your right to file a complaint with the FCC.

Your telephone company may make changes in its facilities, equipment, operations or procedures that could affect the proper functioning of your equipment. If they do, you will be notified in advance and given the opportunity to maintain uninterrupted telephone service.

The telephone company may ask you to disconnect this equipment from the network until the problem has been corrected or until you are sure that the equipment is not malfunctioning.

This equipment may not be used on coin service provided by the telephone company.

The Telephone Consumer Protection Act of 1991 makes it unlawful for any person to use a computer or an electronic device to send any message via a telephone facsimile machine unless such message clearly contains in a margin at the top or bottom of each transmitted page or on the first page of the transmission the following information:

- ❖ The date and time of transmission
- ❖ Identification of either business, business entity or individual sending the message;
- ❖ Telephone number of either the sending machine, business entity or individual.

In order to program this information into your fax/modem, please refer to the appropriate instructions in your fax/modem manual.

Note-TNV Safety Caution:

To reduce the risk of fire, use only No. 26 AWG or larger UL Listed or CSA Certified Telecommunication line cord. Avoid using a telephone (other than a cordless type) during an electrical storm. There may be a remote risk of electric shock from lightning. Do not use the telephone to report a gas leak in the vicinity of the leak.

Canadian EMI Compliance Statement

This Class B digital apparatus meets all requirements of the Canadian Interference - Causing Equipment Regulations.

IC Warning statement:

a. WLAN

“To prevent radio interference to the licensed service, this device is intended to be operated indoors and away from

windows to provide maximum shielding. Equipment (or its transmit antenna) that is installed outdoors is subject to licensing.”

b. For LPD

“Operation is subject to the following two conditions: (1) this device may not cause interference, and (2) this device must accept any interference, including interference that may cause undesired operation of the device.”

This Class B digital apparatus complies with Canada RSS-210.

The abbreviation, IC, before the registration number signifies that registration was performed based on a Declaration of Conformity (DoC) indicating that Industry Canada technical specifications were met. It does not imply that Industry Canada approved the equipment.

European Union CE Marking Declaration

This product has been tested and found to comply with the EMC requirement subject to the EU directive for CE marking.





Table of Contents

Preface	i
Copyright	i
Disclaimer	ii
Important Safety Instructions	ii
Notices of Regulatory Compliance	iv
Getting Started	1
What's in the Box	1
Setting Up Your eo Ultra-Mobile PC	2
Step 1: Inserting the Battery Pack(s)	2
Inserting the Main Lithium-Ion Battery Pack	2
To Remove the Main Lithium-Ion Battery Pack	3
Inserting the Secondary Lithium-Polymer Battery Pack	3
To Remove the Secondary Lithium-Polymer Battery Pack	4
Step 2: Connecting the Ultra-Mobile PC to an External Power Source	4
Step 3: Connecting Applicable Peripherals and Networking Cables	5
Step 4: Powering on the eo Ultra-Mobile PC	5
Step 5: Completing the Operating System Installation	6
Interacting with the Active Digitizer and/or Touch Screen	6
Touch Screen mode	6
Active Digitizer mode (a7330D only)	7
Touring Your eo Ultra-Mobile PC	9
Front View	10
Top View	12
Left Side View	14
Right Side View	15
Back View	16
Bottom View	17
Battery Usage and Care	19
Using the Battery for the First Time	19
Charging the Battery Under Typical Conditions	20
Problems Charging the Battery	21
Battery Status	21
Low Battery Warnings	21
About Battery Pack Usage	22
Real Time Clock Battery	22
Storing a Battery	23

Using Your eo a7330 with Windows	25
Navigating with the Stylus Pen	25
Touch Screen Settings and Calibration	26
Right-Click Emulation	26
Touch Screen Behavior	27
Enable Touch	27
Hide Cursor	27
Touch Sound	27
Calibrating the Touch Screen	28
Digitizer Settings and Calibration (a7330D only)	28
Pen Tab	29
Pen Button Action	29
Pen Tip Options	29
Enable Eraser	29
Click Sound	30
Advanced Settings	30
Pop-Up Menu Tab	30
Calibrate Tab	31
Windows Tablet and Pen Settings Control Panel	32
Programming the Function Buttons	33
Opening an Application, Document or Web Page	34
Assigning a Pre-Defined Function	34
Setting the Screen Brightness	35
Changing Screen Resolution, Color and Rotation	35
Display Settings	35
Display Expansion	35
Color Correction	36
Entering Text with the Input Panels	37
Writing Pad	37
Character Pad	38
On-Screen Keyboard	38
Entering Text with the Eyesboard™ Virtual Keyboard	39
Installing the Eyesboard Keyboard (Tablet PC Edition only)	39
Accessing the Eyesboard Keyboard	39
Connecting to the Internet	40
Using a Wireless LAN	40
Using a Wired LAN	42
Using Both DHCP and a Static IP Address	43
Bluetooth® Wireless Connectivity	44
Bluetooth Device Registration and Pairing	44

Securing Your eo a7330	49
BIOS Settings	49
Creating a Windows Login Password	50
Creating the Password In Windows XP	51
Creating the Password In Windows Vista	51
Setting Ownership of the TPM	52
Windows XP Professional	53
Windows Vista	53
Troubleshooting	57
Recovering Your System Using the System Restore DVD	63
What you will need before you begin	63
Recovering with the Windows Vista® Business System Restore Disc	63
Recovering with the Windows® XP System Restore Disc	65
What to do After You Have Restored Your System	66
Specifications	69
Processor	69
Chipset	69
Power Management	70
Memory	70
Battery	70
Hard Drive	70
Video	71
Display	71
Audio	71
WiFi Wireless	72
Bluetooth® Wireless	73
GPS Module	73
Gigabit Ethernet Embedded LAN Controller	74
TPM Security	74
I/O Ports	74
Weight	75
Measurements	75
Case Color	75
LED Indicators	75
Function Buttons (Right Side)	75
Control Switches (Top)	76
AC Adapter	76
Operating Environment	76
Storage Environment	76





Chapter 01

Getting Started

Your **eo a7330 Ultra-Mobile PC** was designed to allow you to be up and running as quickly as possible. Because the eo a7330 ships to various countries around the world, set-up may vary slightly depending on where you are located.

If you have any questions after reading this manual, please visit our website at www.tabletkiosk.com for more information or to submit a support request.

What's in the Box

Your **eo a7330**¹ should come securely packaged in its shipping carton along with the items listed below². Please contact your dealer immediately if anything is missing or damaged.

1. Power Cord and AC Adapter
2. Microfiber Cleaning Cloth
3. Neoprene Slip Case
4. Quick Start Guide
5. Operating System Getting Started Guide³

¹ There are two models of the eo a7330 Ultra-Mobile PC: the a7330D and a7330T. Please check to make sure that you have received the correct model.

² Contents of the packaging may change without prior notice. Please check our website at www.tabletkiosk.com, or check with your dealer or sales associate for the most up-to-date list if your package contents vary.

³ Please be sure to check that the Getting Started Guide matches the Operating System (OS) preloaded on your eo a7330. There will not be a Getting Started Guide included if you ordered your Tablet PC with openSUSE Linux.

6. System Restore Disc¹
7. Standard a7330 Battery Pack(s)²

Setting Up Your eo Ultra-Mobile PC

Please read the following steps to begin using your new Ultra-Mobile PC as quickly and easily as possible.

1. Inserting the Battery Pack(s) if your Ultra-Mobile PC shipped from the dealer without pre-inserted batteries.
2. Connecting the eo Ultra-Mobile PC to an external power source.
3. Connecting applicable peripherals and networking cables.
4. Powering on the eo Ultra-Mobile PC
5. Completing the Operating System Installation

Step 1: Inserting the Battery Pack(s)

Turn the eo Ultra-Mobile PC over and place it, screen down on a solid, clean, flat surface.



CAUTION: When turning over the eo Ultra-Mobile PC, be careful not to place it on a surface that could scratch or damage the screen. You can place the included slip case on the surface before carefully setting the computer down to protect the screen.

Inserting the Main Lithium-Ion Battery Pack

Align the battery so that the power output port on the bottom of the battery matches up with the power input pins on the back of the a7330. Angle the battery slightly down and place it in the battery slot so that the battery's small retaining tabs fit into the

¹ Please be sure to check that the System Restore Disc matches the Operating System (OS) installed on your eo a7330. There will not be a System Restore Disc included if you ordered your Ultra-Mobile PC without an OS option. Some units may include a restore image on the internal hard drive in addition to, or in lieu of, a restore disc.

² The eo a7330D comes standard with a Lithium-Ion main battery pack and Lithium-Polymer secondary battery pack. The eo a7330T comes standard with only the Lithium-Ion main battery pack.

matching grooves on the eo just pins. Then lay down the opposite side of the battery into the slot until it “clicks” into place.

To Remove the Main Lithium-Ion Battery Pack

Turn over the tablet and place it on a solid, clean flat surface. Slide the battery release latch away from the battery and hold it there. Use your other hand to carefully lift up the side of the battery near the latch. Once clear of the latch, you can release it and use both hands to lift the battery up and away from the opposite side that holds the retaining tabs into place.



Inserting the Secondary Lithium-Polymer Battery Pack

Align the battery so that the power output port on the bottom of the battery matches up with the power input pins on the back of the a7330. Angle the battery slightly down and place it in the battery slot so that the battery’s small retaining tabs fit into the matching grooves on the eo just above the power input pins. Then lay down the opposite side of the battery into the slot until it “clicks” into place.



To Remove the Secondary Lithium-Polymer Battery Pack

Turn over the tablet and place it on a solid, clean flat surface. Slide the battery release latch away from the battery and hold it there. Use your other hand to carefully lift up the side of the battery near the latch. Once clear of the latch, you can release it and use both hands to lift the battery up and away from the opposite side that holds the retaining tabs into place.




Step 2: Connecting the Ultra-Mobile PC to an External Power Source

Locate the AC adapter and the power cord. Plug the power cord securely into the AC adapter. Plug the AC adapter's connection cable into the "DC Power In" port on the top of the tablet. Once


the adapter plug is securely in place, plug the power cord into an external power socket.




 **NOTE:** When you first connect the tablet into an external power source, the battery charge indicator will begin to glow amber. When the battery is fully charged the indicator will turn green. See the section entitled *Battery Care* for tips on maximizing battery life and performance.

Step 3: Connecting Applicable Peripherals and Networking Cables

If you would like to use any external peripheral with the tablet (i.e. USB mouse, USB keyboard, etc.) or are planning to connect to the Internet and/or a corporate LAN using a wired connection (RJ45) as opposed to wirelessly, connect the external peripheral now. See the chapter entitled *Touring Your eo Ultra-Mobile PC*, to identify which ports to use.

 **IMPORTANT:** When you power on the a7330T for the first time, you will need to have an external USB keyboard connected in order to complete the Windows XP Professional installation routine. The a7330D can use the on-screen keyboard in Active Digitizer mode.

Step 4: Powering on the eo Ultra-Mobile PC

Locate the three power switches on the top on the tablet. The  switch is the computer's main power toggle. Slide it to the right and hold it there until it emits a blue glow (about 1-2 seconds) and then release it. The *eo Ultra-Mobile PC* will now boot up.

Step 5: Completing the Operating System Installation

When your system powers on for the first time, Windows will have a few questions for you to answer in order to localize your installation.



NOTE: You'll need a USB keyboard connected to your a7330T in order to answer some of the questions that require text input. You can use the on-screen keyboard with your a7330D in Active Digitizer mode.

Refer to your operating system's manual for information on any of the questions you are unsure how to answer.

Interacting with the Active Digitizer and/or Touch Screen

Unlike a standard laptop or desktop PC, standard navigational activities on an Ultra-Mobile PC are completed using the stylus pen, or even your fingers if using the touch screen. The screen will react to the pen differently depending on whether you are using the Touch Screen mode or the Active Digitizer mode.

Touch Screen mode

Navigating with a touch screen is different from navigating with a mouse. The pen will interact with the computer whenever you touch it to the screen.

Hold the stylus pen as if you were writing with a standard pen. Instead of sliding the pen around the screen, just tap on what you want to interact with. Sliding the pen while lightly touching the tip to the screen will move the on-screen pointer around as if you were using a mouse and holding down the left mouse button. In other words, you would be performing what is known as a drag operation.

Also, remember that since the screen is sensitive to the touch, resting your hand on the screen while using the pen might make the pointer react unpredictably.



TIP: When trying to select or activate something on the screen with the stylus pen, pay attention to the position of the pointer icon instead of the tip of the pen.

Tapping lightly on the screen will perform a standard left mouse button click. Holding the tip of the pen against the screen without moving it for about a second or so will perform a standard right mouse button click.

Active Digitizer mode (a7330D only)

The eo a7330D dual mode screen is auto-sensing. The screen will default to touch screen mode until it senses that the stylus pen is near the screen. Once the pen is close enough to the screen to be detected, the eo a7330 will automatically switch to digitizer mode.

Hold the stylus pen as if you were writing with a standard pen. Place the tip of the stylus just above the screen and move it around. The pointer should follow the tip of the pen. In this mode your hand may rest on the screen, since this will not affect the behavior of the pointer.



TIP: When trying to select or activate something on the screen with the stylus pen, pay attention to the position of the pointer icon instead of the tip of the pen.

Tapping lightly on the screen with the tip of the stylus will perform a standard left mouse click. If you want to perform a right mouse click, press and hold down the tip of the stylus lightly on the screen. In a moment, an animated icon will draw around the pointer. Lift the stylus from the screen to complete the button press.



NOTE: Animated cues, or floating tablet tips, will only appear in the Active Digitizer mode if your Sahara Slate PC is running Windows XP Tablet PC Edition or Windows Vista.





Chapter 02

Touring Your eo Ultra-Mobile PC

The eo a7330 Ultra-Mobile PC features a number of physical characteristics designed to help you work as efficiently as possible. Take a moment to familiarize yourself with the controls and Input/ Output (I/O) ports on the faces and sides of the computer. Understanding the layout of the system will help you use your eo a7330 more efficiently while in the field or on-the-go.



The **eo a7330T** features a resistive touch screen, while the **eo a7330D** features an all new auto-switching, dual mode digitizer/touch screen by Wacom that is also sunlight viewable.

Front View



1. **Battery Charge Indicator**

Glows amber when the battery is charging and changes to green when the battery is fully charged. Glows Orange when charge drops below 10% and blinks when below 2%. Doesn't light up when running on battery unless in a low state as mentioned.

2. **Hard Disk Drive Activity Light**

Blinks blue when the hard drive is being accessed.

3. **Dual Digital Microphone Array**

Microphone array records audio with higher fidelity for more accurate voice recognition. Recording input source can be toggled between the internal array and an external audio source plugged into the Audio In port (see 4 in the **Left Side View** section later in this chapter) via the Realtek Audio Control Applet.

4. Auto-Switching Dual Mode Screen (a7330D only)

Screen mode is set to Touch Screen by default. When the stylus pen's writing tip is within sensing distance—approximately 12-15mm—the screen will automatically switch to Active Digitizer mode. When the pen's writing tip is moved away from the screen, it will switch back to Touch Screen mode. When in Digitizer mode, the screen is not sensitive to touch (except by the stylus pen's writing tip), and thus resting your hand on the screen while writing or navigating will have no influence on the pointer's position.

4. Passive Resistive Touch Screen (a7330T only)

Touch Screen is responsive to touch by any object, as the screen's sensors react purely to pressure, as opposed to a magnetic tip or electrical conduction. Resting your hand on the screen while writing or navigating may affect the pointer's position.

Top View



1. DC Power In Jack

Plug the AC adapter's connection cable into this port to provide power to the computer.

2. Built-in Speaker

To listen to music, movies, games and more.

3. Ventilation Port

Fan exhaust port for expelling hot air from the interior of the eo Ultra-Mobile PC. Do not block to prevent over heating.

4. Wireless Networking Power Toggle

Slide the toggle switch to activate the wireless networking adapter's transmitter and/or the optional 3G data module's transmitter (if installed). The switch will glow blue when the WiFi adapter is powered on, amber when the 3G module is powered on, and both (purple) when both are active. Slide switch back to turn off all wireless networking. Use the wireless mode toggle button to change wireless modes (see 9 in the *Front View* section earlier in this chapter).



NOTE: When not connected to a wireless network, turn off the wireless transmitter to conserve battery power.

5. Bluetooth Power Toggle

Slide the toggle switch to activate the Bluetooth wireless transmitter. The switch will glow blue when powered on. Slide switch back to turn off Bluetooth.



NOTE: When not actively using a Bluetooth peripheral, turn the Bluetooth transmitter off to conserve battery power.

6. System Power/Resume Toggle

Slide this switch and hold for 1-2 seconds to power on the computer or to resume normal operation if the computer is in Suspend Mode. Slide and holding for 4-6 seconds to immediately turn off the computer.



NOTE: Using this switch to power off the computer is not recommended unless the computer has stopped responding to user input as there is no time for the OS to shut down normally, and as a result, data loss may occur.


Left Side View



- 1. Anti-Theft Kensington Lock**
Use with the locking device (sold separately) to attach the eo Ultra-Mobile PC to a desk, table, kiosk, or other stationary apparatus to help prevent the computer from being stolen.
- 2. Ethernet LAN Port**
Use this RJ45 jack to access a local area network or high-speed Internet connection with a standard, twisted-pair Ethernet cable. Supports 10/100/1000 Mbps protocols.
- 3. Headphone / Audio Out**
Stereo audio port for connecting headphones, external speakers or other audio devices.
- 4. Audio In**
Used to input stereo audio from external devices such as a microphone, radio or tape player.
- 5. USB 2.0 Port**
High speed (480 Mbps) Universal Serial Bus 2.0 ports for connecting peripherals such as a mouse, keyboard, wedge reader, CD/DVD drive, printer, digital camera and more. Backward compatible with USB 1.1 devices.
- 6. Ventilation Port**
Cooling fan intake port. Do not block to help prevent overheating.

Right Side View



- 1. Stylus Pen and Holder**
Secures the stylus pen to the eo a7330.
- 2. Expansion Module Port**
(USB 2x2™ Module pictured above)
Plug-in expansion module port allows for the optional plug and play addition of feature modules including 3G/3.5G WWAN, CCD Reader, Magnetic Stripe Reader, and more.
 **NOTE:** The a7330D includes the above pictured USB 2x2 Module that features two (2) High Speed USB 2.0 Ports.
- 3. User Programmable Function Buttons**
These two buttons can be programmed by the user.
- 4. Screen Rotation (User Programmable)**
By default, this button will rotate the screen counter-clockwise 90° to a portrait orientation and then back to the original landscape orientation. This button can be reprogrammed by the user.
- 5. Secure Attention Sequence (SAS)**
A computer without an attached keyboard must support a hardware mechanism to generate the SAS which is also known as “CTRL+ALT+DEL” or “CAD”.

Back View



- 1. Main Battery Release Tab**
Holds main battery in its port. Pull tab away from the battery and hold to allow for battery removal.
- 2. Main Battery Pack**
The eo a7330 comes standard with a 4-cell Lithium-Ion battery pack that provides for up to 4~5 hours of system runtime.
- 3. Expansion Module Port**
Plug-in expansion module port allows for the optional plug and play addition of feature modules including 3G/3.5G WWAN, CCD Reader, Magnetic Stripe Reader, and more.
- 4. Stylus Pen and Holder**
The holder secures the stylus pen to the eo a7330. Simply slide out the stylus for use.
- 5. Secondary Battery Release Tab**
Holds secondary battery in its port. Pull tab away from the battery and hold to allow for battery removal.

6. Fold Out Stand

Built-in stand swings out allowing the a7330 to stand upright.

7. Secondary Battery Pack

The eo a7330D comes standard (optional for the a7330T) with a 2-cell Lithium-Polymer battery pack that, in addition to the main battery pack, provides for approximately seven (7) hours of system runtime.

8. VESA Mounting Screw Holders

Used to allow mounting with 75mm – 100mm VESA compatible attachments.

Bottom View



1. Docking Cradle Connector

This connector will allow the use of optional expansion devices such as the a73DC Docking Cradle. Power pass-thru is supported.





Chapter 03

Battery Usage and Care

Depending on your system's configuration and your application usage, a fully charged Lithium-Ion main battery should allow you to run your eo Ultra-Mobile PC for 4 ~ 5 hours. Add the secondary Lithium Polymer battery and you could see more than 7 hours of runtime.

Operations that will significantly reduce battery life include, but are not limited to, the following:

1. Using external bus-powered USB optical, floppy and hard disk drives
2. Using wireless communications devices, including the internal wireless networking card, optional 3G data module Bluetooth adapter, or bus powered USB devices.
3. Using high-brightness display settings, 3D screen savers, or other computationally intensive programs such as games, media players and 3D graphics applications.
4. Running the computer in maximum performance mode.
5. Using the computer in overly-hot environmental conditions.

Using the Battery for the First Time

Before using the computer on battery power for the first time, the battery should be charged for at least four hours. Also, the Smart Battery IC within the battery pack should be calibrated in order to get an accurate reporting of the remaining battery life.

To calibrate the battery pack, follow these steps:

1. Turn the computer off. Connect the AC adapter and let the battery fully recharge.
2. Disconnect the AC adapter and power on the computer. Let the battery run down until it is so low that the battery charge light turns red and the system automatically enters the Suspend mode.
3. Reconnect the AC adapter, let the battery fully recharge and then run the computer with the external power still connected for at least five (5) continuous hours.

The battery pack should now be properly calibrated. If you find that battery life doesn't correspond to the battery status as reported by your operating system, repeat steps 2 -3 again.

If after performing a calibration for a second time you still find you are having a problem with the battery life, contact your dealer and arrange for a replacement. The battery may be defective.

In general, using the battery until the "Battery Low" warning indicator appears and then fully recharging the battery (full discharge/charge cycle) will ensure the accuracy of the battery status gauge.

If you find you are using the computer almost exclusively attached to an external power source, calibrating at least once a month is recommended.

Charging the Battery Under Typical Conditions

When you connect the computer to an electrical outlet, the Smart Battery IC in the battery pack checks the battery's charge and temperature. If charging is necessary, the battery indicator on the front of the eo a7330 will glow amber and the AC adapter will automatically charge the battery.

When fully charged, the battery indicator will change to green and the battery's charge will be maintained while connected to the external power source. When the computer is disconnected from the electrical outlet, the battery indicator will turn off.



NOTE: The time to fully recharge the battery is approximately 90 ~ 100 minutes when the computer is powered off. The time to fully recharge the battery when the computer is in use varies according to the power requirements of the operations that the computer is performing while charging.

Problems Charging the Battery

Environmental conditions can affect the ability of the computer to charge the battery. If the battery is too hot from either being used in your computer or being exposed to an overly hot environment, the battery may not charge when you connect the computer to an electrical outlet.

If this occurs, disconnect the computer from the electrical outlet and allow it and the battery to cool to room temperature. Then reconnect the computer to an electrical outlet to continue charging the battery.

Battery Status

Both Windows XP and Windows Vista have an applet in the Control Panel that will display an icon in the Windows taskbar indicating when the computer is running on battery power or is attached to the AC adapter.

This applet also displays a meter that indicates approximately how much of a charge is remaining in the battery.

Low Battery Warnings

A beeping sound will be heard once to alert you to a "Battery Low" status. The Battery LED indicator will begin to flash red.

When the battery's power level drops to a "Battery Very Low" status the beeping sound will be heard every second.

When this continuous beeping occurs, your battery has only approximately one to two minutes of charge left. You should save what you are working on and plug in the AC power adapter to avoid potential data loss.

When there is only one minute of battery charge remaining, the computer will suspend its current state to the hard drive and power off. Plug in the AC adapter and turn the computer back on to resume your work.

About Battery Pack Usage

Over time, even with proper care, battery performance (the time the battery can operate the computer before needing to be recharged) will decrease. Depending on how often the battery is used, how many times it has been charged and the conditions under which it is used, you may need to purchase a new battery during the life of your computer.



IMPORTANT: To avoid damage, only use replacement batteries recommended by TabletKiosk. To prevent the loss of data when the system loses power, do not remove the main battery pack while the power is on unless attached to an external power source. If you must hot swap, both battery packs must be attached to the eo a7330, and we recommend putting the system into a sleep or hibernation state.



NOTE: Do not dispose of batteries with household waste. When your battery no longer holds a charge, call your local waste disposal or environmental agency for advice on disposing of a lithium-ion or Lithium Polymer battery.

Real Time Clock Battery

In order to maintain certain system information while the power is off, the motherboard contains a small built-in battery pack that constantly supplies power to the system.

If the computer is left without a power source for long periods of time, this battery can be exhausted and system information will be lost. This will not affect any of your data stored on the computer's hard drive, but rather the settings in the BIOS that tell the computer how to operate. It is recommended, therefore,

that if you plan to store the computer for a long time you periodically attach the battery pack, plug in the computer to an external power source and allow the battery to recharge.

If you find out, after removing the computer from storage, that you have lost this system information, by receiving a BIOS error when you boot up for the first time, contact your dealer or visit TabletKiosk's website at www.tabletkiosk.com to obtain the proper BIOS settings.

Storing a Battery

When storing your computer for an extended period of time, it is recommended that you remove the battery pack and store it in a dry, cool location (Do not freeze). Also, we recommend storing the battery with a 40 - 50% charge.

If you store the battery when it is fully discharged, it is possible that the battery could fall into a deeply discharged state. This can cause the battery to lose its ability to hold any charge at all. Conversely, storing a fully charged battery can cause damage to the storage cells rendering its total charge capacity to become prematurely diminished.

Since a smart Lithium-Ion battery slowly discharges during prolonged storage, you should fully recharge the battery before you use it again. Additionally, you should consider periodically charging and discharging a battery in long term storage to promote optimal battery performance and life.



TIP: If storing the batteries for a long period of time, we recommend charging and discharging the Lithium-Ion main battery every 1 - 2 months, while we recommend every 2 -3 months for the Lithium Polymer secondary battery. Remember to bring the charge level to approximately 40 - 50% capacity before replacing into storage.



Chapter 04

Using Your eo a7330 with Windows

While your eo a7330 Ultra-Mobile PC is a versatile, mobile computer capable of accomplishing all the same tasks as a netbook, and running most all the same applications as standard laptops and desktop PCs, there are some differences in the way that you interact with Windows using a stylus pen, or your fingers, as opposed to a mouse and keyboard. This chapter contains tips and details to get the most from your eo a7330 while using Windows.

Navigating with the Stylus Pen

With an Ultra-Mobile PC, you use a stylus pen or your fingers instead of a mouse to interact directly with objects on your screen. You can open, move, edit and delete items — such as icons, files, windows and more — with easy-to-use basic functions similar to those performed with a mouse.

Stylus Pen Action	Equivalent Mouse Action
Point	Point
Tap	Click
Double-tap	Double-click
Press and hold	Right-click
Drag	Drag

Hold the stylus pen as if you were writing with a standard pen. Instead of sliding the pen around on the screen, just tap on what you want to interact with. In digitizer mode (a7330D only), moving the stylus pen's tip just above the screen will cause the

pointer to follow along similarly to how it behaves when moving a mouse. Sliding the pen while lightly touching the tip to the screen will move the on-screen pointer around as if you were using a mouse and holding down the left mouse button. In other words, you would be performing what is known as a drag operation.

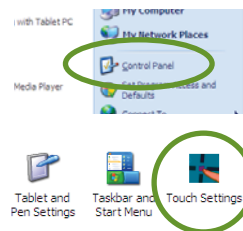
Also, remember that since the screen is sensitive to the touch, resting your hand on the screen while using the stylus pen might make the pointer react unpredictably. Actually, this is only true with the eo a7330T, as when using the stylus pen with an eo a7330D the screen will automatically switch to digitizer mode which is not touch sensitive except to the pen's tip.

It is also important to note that some of the context-sensitive features of Windows XP Tablet PC Edition and Windows Vista, such as the floating Input panel icon, will only function when you are using the pen and your eo a7330D is in Active Digitizer mode.

Touch Screen Settings and Calibration

Wacom's "Touch Settings" Control Panel allows you to customize the way your touch screen behaves as well as calibrate the screen for more accurate input.

1. Go to the START Menu and tap on "Control Panel" in the right hand column.
2. From the Control Panel window, double-tap on the "Touch Settings" icon to open the control panel.



Right-Click Emulation

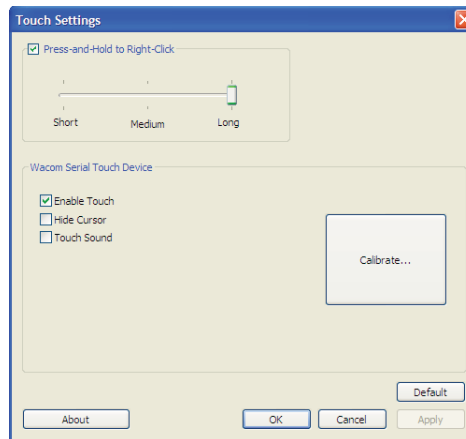
You can enable and disable the "Right-Click" emulation by tapping the check box in the "Press-and-Hold-to-Right-Click" section, as well as set the duration that you must hold before a "Right-Click" is performed by adjusting the slider.

Touch Screen Behavior

The following check boxes will alter the way that the touch screen behaves. These options have no effect on how the screen behaviors when in digitizer mode (a7330D only).

Enable Touch

The “Enable Touch” check box allows you to enable and disable the touch screen.



NOTE: a7330T owners should be careful, for if you disable the touch screen you will need to attach a keyboard or mouse in order to navigate and interact with your system. a7330D users can still use the digitizer. This essentially turns the a7330D into a pen only system.

Hide Cursor

The “Hide Cursor” check box will hide and show the mouse pointer when interacting with the touch screen. When this feature is enabled, the cursor will not be visible when in touch mode. This is handy for using your system as a button driven touch screen kiosk or controller.



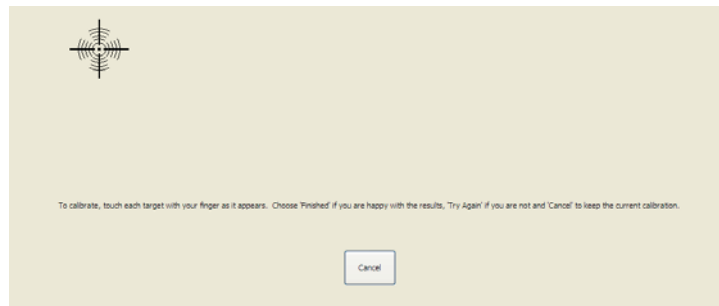
NOTE: a7330D users, when the proximity of the stylus pen’s tip auto-switches the screen to digitizer mode, the cursor will appear. Tap on the screen with something other than the pen’s tip to return to touch screen mode and re-hide the pointer.



Touch Sound

The “Touch Sound” check box will enable an audible beep to be produced when the touch screen registers an input. This can be helpful for supplying kiosk customers or a remote controller user some feedback to let them know that their input was accepted (i.e. a button press was registered, etc.).

Calibrating the Touch Screen

Tapping the “Calibrate...” button will initiate the system’s touch screen calibration routine. Simply follow the instructions that appear on screen and tap the center of the targets with your finger. When done, tap the “Finished” button to accept your calibration input and exit, tap “Try Again” to redo the calibration routine, or tap “Cancel” to quit without saving the new calibration information.

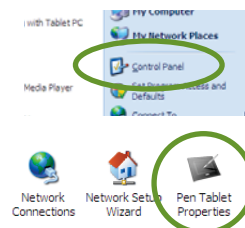


 **TIP:** A quick way to access the both the Touch Screen and Digitizer (a7330D only) calibration routine is to use the “Pen” screen in the “Panel Control Center”. Simply press and hold on the  icon in the system tray to bring up the “Launch Button Quickshow” menu. Tap the “Configure...” button to open the Panel Control Center and then tap the “Pen” button. Tap the “Configure...” button and choose the input screen to wish to calibrate.

Digitizer Settings and Calibration (a7330D only)

Wacom’s “Pen Tablet Properties” Control Panel allows you to customize the behavior of the Stylus Pen as well as calibrate the digitizer for more accurate input.

1. Go to the START Menu and tap on “Control Panel” in the right hand column.
2. From the Control Panel window, double-tap on the “Pen Tablet Properties” icon to open the control panel.

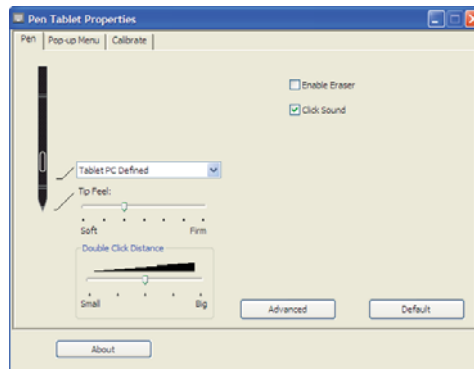


Pen Tab

The options on this tab will adjust the behavior of how the pen interacts with the digitizer as well as how the pen itself will behave.

Pen Button Action

The button on the side of the stylus pen can be programmed to perform a wide variety of tasks, including a standard left-button click, a double-click, a right-click, opening the Tablet PC Input panels (see the section entitled “Entering Text with the Input Panels” later in this chapter), entering a keyboard keystroke combination, opening a program, and more.



Pen Tip Options

The “Tip Feel” slider adjusts how much pressure you must apply to the screen to change the amount of input by the pen. This is primarily for applications that recognize different levels pressure sensitivity (i.e. the inking pen in Microsoft® OneNote™ or the paint brush tool in Adobe® Photoshop®).

The “Double-Click Distance” slider adjusts how far apart you can perform two successive taps and still register a mouse “double-click” action.

Enable Eraser

Checking this box will switch the options on this tab to support a stylus pen that has an eraser feature. The stylus that comes standard with the a7330D does not have such a feature.

Click Sound

This option is the same as the corresponding feature in the touch screen settings, except that it will cause the system to make an audible “clicking” sound when the pen’s tip touches the screen while in digitizer mode.

Advanced Settings

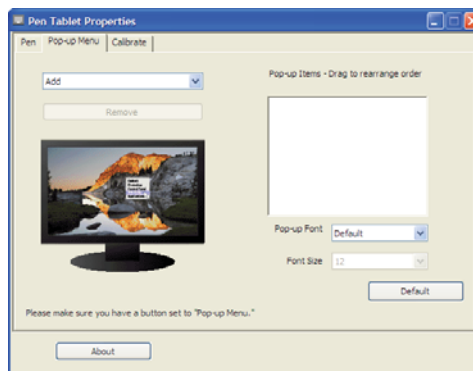
Tapping on the “Advanced” button opens the “Advanced Settings” window where you can specify how the pen’s side button will function.

“Hover Click” mode means that in order to perform the action associated with the pen’s side button, all you have to do is hold the pen tip near enough to the screen to activate digitizer mode and then press the button.

“Click & Tap” mode means that in order to perform the action associated with the pen’s side button, you must first press and hold down the button and then tap on the screen.

Pop-Up Menu Tab

In order to perform common actions more quickly and easily, you can use the controls on this tab to create a custom pop-up menu, filled with whatever entries you build from the drop-down of options, that appears when you press the pen’s side button if you set the button’s action to “Pop-up”.

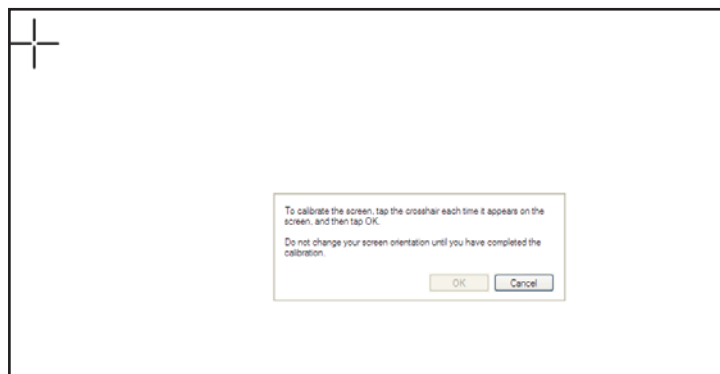
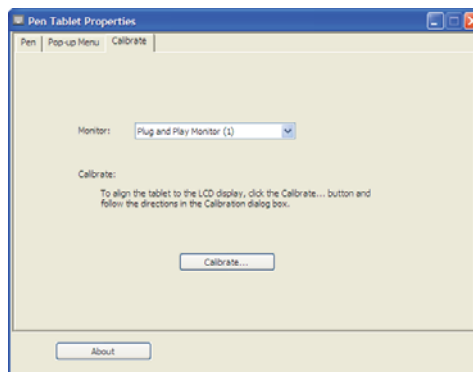


The sort of actions you can add to the pop-up menu includes keystroke combinations, opening specific applications, and changing the pen's follow mode between "pen" and "mouse".

You can also choose the font face and the font size that will display in the pop-up menu.

Calibrate Tab

This is where you will find the digitizer's calibration routine. Simply tap the "Calibrate..." button to start the calibration. As with the touch screen, simply follow the on-screen instructions and tap in the center of each cross that appears on the screen. When finished, you can choose to save and exit the routine, or cancel and not save when you exit.



The digitizer calibration is very similar to the touch screen calibration. Touch the center of the crosses when they appear.

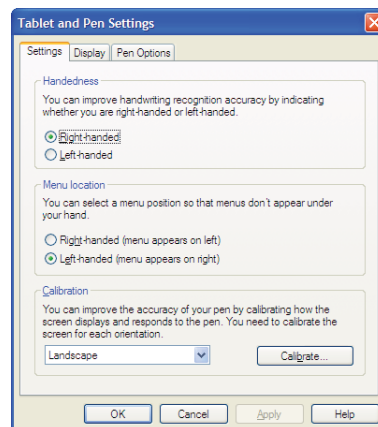
Windows Tablet and Pen Settings Control Panel

Besides the Wacom control panel, Windows XP Tablet PC Edition also features its own control panel.

To access the “Tablet and Pen Settings” control panel:

1. Tap on the START button to open the START Menu.
2. Tap on the “Control Panel” and then in the Control Panel window that opens, tap on the “Printers and Other Hardware” category.
3. From the “Printers and Other Hardware” window, look under “or pick a Control Panel icon” for “Tablet and Pen Settings” and tap to open the control panel.

This control panel will allow you to set your handedness, where menus open, the default screen rotation, what mouse actions occur with different pen actions and more. You can tap on the “Help” button for more information on each of the individual features in the panel.




Another important feature of the “Tablet and Pen Settings” control panel can be found on the “Settings” tab: it is the Digitizer Screen Calibrator. For improved accuracy, you can independently calibrate the digitizer screen for both landscape and portrait orientations.

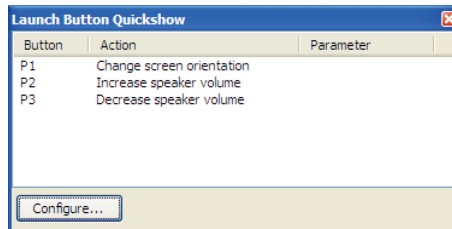
Choose the orientation from the drop down list and then tap on the “Calibrate...” button to start the calibration routine. Follow the on-screen instructions to complete the calibration. This is the same routine as from Wacom’s “Pen Tablet Properties” Control Panel.

Programming the Function Buttons

Your eo a7330 has three user-programmable function buttons located on the right side of the eo. You can use the "Launch Button" screen in the "Panel Control Center" to reprogram the buttons to activate a different preprogrammed task, or to launch a "Custom" application of your choice.

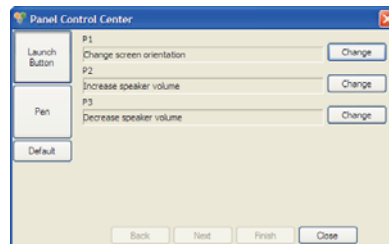
To program a function button:

1. Press and hold on the  icon in the System Tray to open the "Launch Button Quickshow" panel that will give you a



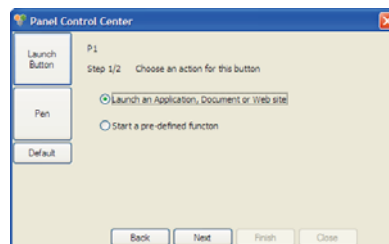
summary overview of the functions mapped to each of the buttons along with any custom parameters.

2. Tap the "Configure..." button to open the Panel Control Center. By default, the "Launch Button" screen will be displayed.



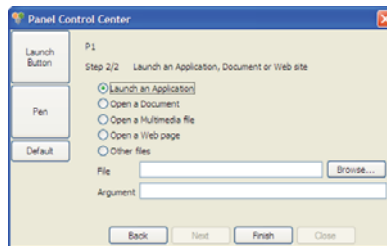
3. Choose the button you wish to program and then tap the appropriate "Change" button.

4. On the screen that appears, choose either to open an application, document or web-page; or to pick from a list of pre-defined functions. Then tap the "Next" button.



Opening an Application, Document or Web Page

- Using the option buttons, choose the appropriate file type you'd like to open.
- Go down to the "File" field— or "URL" field if you chose to open a web page—and either type in the exact path to the file/program or tap the "Browse..." button and navigate to it. You will have to enter the exact URL if you chose to open a web page as no "Browse..." button is available. You can, however, copy & paste a URL from your web browse.
- Enter any program arguments, if applicable, and tap the "Finish" button to commit the change to the button's function and return to the "Launch Button" screen.

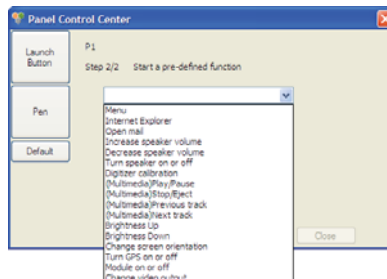


Assigning a Pre-Defined Function

- Using the drop-down list box, choose the pre-defined function you'd like to assign to the button.




NOTE: The first option in the list box, "menu", refers to opening context sensitive menus. In other words this is equivalent to performing a right-click action.

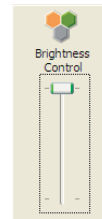


- When you are satisfied with your selection, tap on the "Finish" button to commit the change to the button's function and return to the "Launch Button" screen.

If at any point you wish to restore the all the buttons to their original programmed state, simply enter the "Launch Button" screen and tap on the "Default" button.

Setting the Screen Brightness

The “Brightness” applet, accessible by simply tapping on the  icon in the System Tray, allows you to set an overall brightness level for the display screen. Simply drag the slider down to dim the display or up to brighten the display. This control is independent from the sliders in the Intel Media Accelerator Driver control applet.



Changing Screen Resolution, Color and Rotation

Using the control panel of the Intel Graphics Media Accelerator Driver, you can enable multi-monitor support, adjust color balance and gamma, change the screen resolution, enable/ disable screen rotation and more. This section will get you started with the control panel. For more detailed information about the panel’s features, click on the question mark icon located on the right-hand side of the panel’s title bar.

To access the control panel of the Intel Media Accelerator Driver, tap on the screen icon located in the Windows system tray. When the pop-up menu appears, tap on “Graphics Properties...” to open the panel.

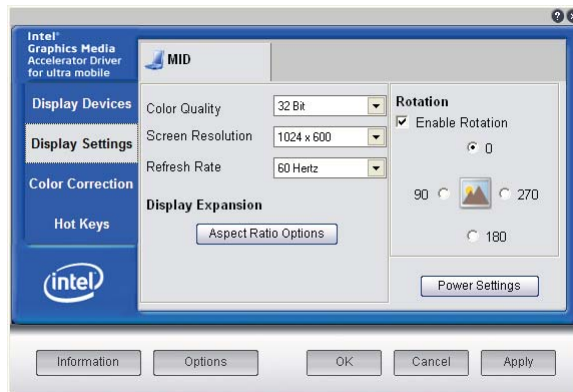
Display Settings

The Display Settings tab holds the controls that affect color depth, screen resolution and screen rotation. Most of the time you will probably want to use the default values, but you may encounter specialized applications where it is advantageous to lower the screen’s resolution or disable the screen rotation function.

Display Expansion

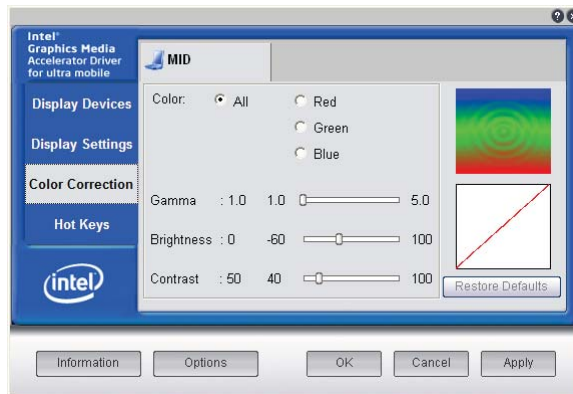
By default, the native resolution of the eo a7330’s screen is 1024x600 (16:9 wide screen aspect ratio). The other three screen resolutions you can change to (640x480, 800x600 and 1024x768) are standard 4:3 aspect ratios. The “Aspect Ratio Options” panel

allows you to control how these non-native screen resolutions will resolve on your display (i.e. stretched or pillar boxed).



Color Correction

The Color Correction tab is where you will find the controls that affect the color balance, brightness and contrast of the display screen. Use the control sliders to adjust the screen values. Moving a slider to the left decreases the corresponding value, moving a slider to the right increases it.



By using the color channel option buttons at the top of the panel, you can change the RGB color values equally or individu-

ally. The Gamma control will adjust the screen's brightness without affecting the white point or the black point of the display.

Tap on the "Restore Defaults" button to return the control settings to their default values. This is useful if you are experimenting with the sliders and are unhappy with the results, or if you decide to make additional changes at a later time and want to discard your previously-applied settings. Tap on the "Apply" button to accept your changes, the "Cancel" button to reject the changes, or the "OK" button to accept the changes and exit the control panel.

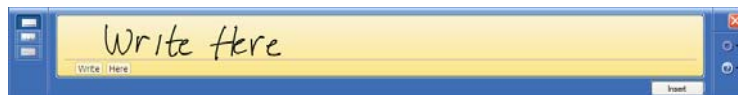
Entering Text with the Input Panels

Complementing Microsoft's Digital Inking handwriting recognition technology, Windows XP Tablet PC Edition features input pads that accept and convert handwriting to text, as well as provide a more compact and convenient on-screen keyboard.

Tap the "Keyboard" icon located next to the START button on the Windows Taskbar to display the on-screen keyboard and writing pads. These input tools allow you to enter information directly into any application that accepts standard keyboard inputs.

Writing Pad

This pad allows you to enter text on a word-by-word basis. You write on the lines inside the writing pad just as you would write on a lined piece of notepaper. When you reach the end of the line, the pad will expand automatically so you can keep on writing without having to stop. Windows will convert your handwriting into text, on the fly, and then insert it in the appropriate location when you tap "Insert".



Character Pad

This pad accepts input on a character-by-character basis and is useful for entering information that requires a higher level of precision, such as passwords, website URLs or e-mail addresses. When you reach the end of the line, the pad will expand automatically so you can keep on writing without having to stop. Windows will convert your handwriting into text, on the fly, and then insert it in the appropriate location when you tap "Insert".



On-Screen Keyboard

Use it the same way that you would use a standard keyboard. By tapping on the individual keys with the stylus, text and symbols can be entered as well as Function Key equivalents and menu item short cuts.

Tap the <Num> or <Sym> keys to display the "Numeric" and "Symbol" keypads respectively. Tap <Func> to bring up the Function keypad.



Tap on the gear icon, on any of the input panels, to display a menu that you can use to invoke Windows XP Tablet PC Edition's speech recognition capabilities, adjust where you want the input panels to appear on the screen, undock the panel to move it anywhere on the screen, or open the panels' "Options" menu.



For more information about the Input Panels, refer to the Windows Online Help System by tapping on the “Help and Support” item inside the START Menu.

To learn more about how to use the input panels, you can also take the “Tablet PC Tutorials” by navigating to “All Programs > Tablet PC > Tablet PC Tutorials” in the START Menu. For more information about the Input Panel’s “Options” menu, tap on the “Help” button inside of the “Options” Menu Panel.

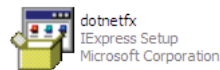
Entering Text with the Eyesboard™ Virtual Keyboard

A more feature rich and customizable keyboard that comes with your eo a7330 is the Eyesboard Virtual Keyboard. Eyesboard features a full standard keyboard plus optional keypads and function keypads that you can dock or free float around the screen. You can adjust the size, position, color, opacity and more.

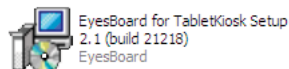
Installing the Eyesboard Keyboard (Tablet PC Edition only)

If your eo a7330 came with Windows XP Tablet PC Edition, you will have to first install the Eyesboard Keyboard application before you can use it.

The first thing you must do, before installing the Eyesboard application, is to install the Microsoft .NET 2.0 Framework package located on your desktop. Simply double-tap on the “dotnetfx” icon to start the installer.



After you have successfully completed the .NET installation, you can install the Eyesboard application.



Simply locate the “EyesBoard for TabletKiosk Setup” icon on your desktop and double-tap on it to start the installation.

Accessing the Eyesboard Keyboard

To access the Eyesboard Keyboard, just double-tap on its icon located on the desktop. For more information on using and

customizing the Eyesboard to suit your tastes and working style, you can access the help file by tapping on the “?” button in the upper right hand corner of the keyboard.



Connecting to the Internet

Your eo a7330 allows you to connect to the Internet in a few different ways. The ways vary depending on your networking environment as well as personal preference and available equipment.

Using a Wireless LAN

The WiFi wireless networking adapter built into your eo a7330 is compatible with 802.11a/b/g/n (Draft 2.0) wireless networks, and can therefore connect to wireless routers or access points that support any of these standards.

1. Turn on the WiFi transmitter using the toggle switch on the top of your tablet.
2. In the System Tray, tap on the Intel PROSet icon and choose “Configure WiFi” from the pop-up menu that appears.
3. When the Intel® PROSet/Wireless WiFi Connection Utility opens, choose the network from the list that you wish to connect to and tap the “Connect” button. If no wireless networks appear after a few moments, tap on the “Refresh” button located just below the list.






4. If the wireless network you are attempting to connect to is security-enabled, you will see a dialog box requesting either a network key or, if the wireless network supports WiFi Protected Setup (WPS), a PIN.



Most failures to connect to a wireless network occur because the network key has been improperly entered. Be very careful when entering this key. If you do not know the correct key to enter, or still can't connect after entering the key properly, contact your network administrator or the technical support line of your Internet Service Provider (ISP).

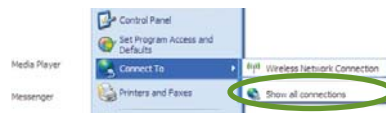
 **NOTE:** If your network access point or router uses WiFi Protected Set-up, the WPS Wizard will appear on the screen. Choose your access point from the drop-down list, enter your PIN when prompted. Unless you need to configure your access point/router for the first time, just tap on the "No" button when asked. If you entered your PIN properly, you should see the same pop-up window informing you that you are connected. Check with your Network Administrator or the instructions that came with your access point/router for locating the PIN.

Using a Wired LAN

Another way to connect to the Internet with your eo a7330 is by a wired LAN environment accessed via the RJ45 port located on the left side of the a7330 (see the chapter *Touring Your eo a7330* for the exact location). Using this method, an Ethernet jack or a broadband modem must be within the reach of the networking cable you are using.

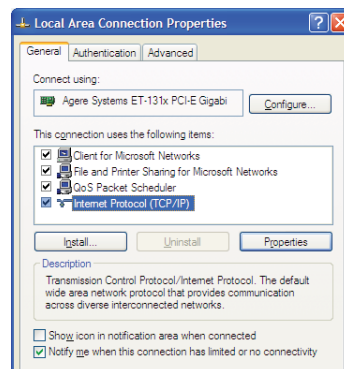
1. Connect an Ethernet networking cable into the LAN port of your eo a7330 and then connect the other end into your broadband modem or the appropriate LAN port as instructed by your network administrator. Most of the time, you will probably find that you are now connected to the Internet. If not, continue on with step 2.

2. From the START menu, select "Connect To" and tap on "Show all connections".

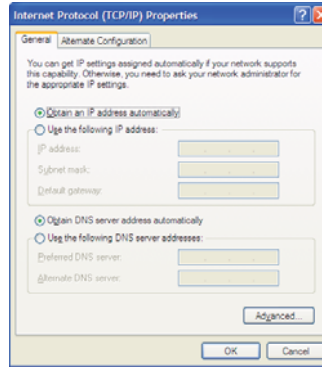


3. In the "Network Connections" window, look at the "Local Area Connection" item and make sure it reads as "Connected". If not, recheck that your networking cable is properly connected, or contact your network administrator.
4. Press and hold the "Local Area Connection" item and select "Properties" from the pop-up menu that appears, or if the Status window appears, tap the "Properties" button.

5. Under the General Tab, you'll see a list box called "This connection uses the following items:". Select "Internet Protocol (TCP/IP)", and tap the "Properties" button to open the "Internet Protocol (TCP/IP) Properties" window.



6. If DHCP is used on your network, tap “Obtain an IP address automatically” and “Obtain DNS server address automatically”. Otherwise, enter the correct IP and DNS server addresses by selecting the two options that begin with “Use the following...” If you are unsure of which option to use, contact your network administrator or your ISP’s Tech Support.

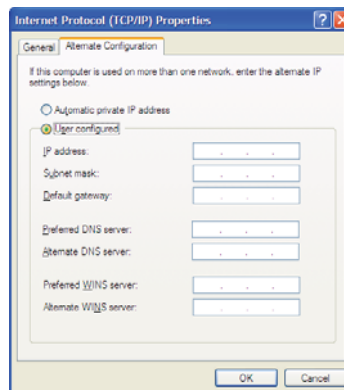


7. After entering the correct the information in the “Internet Protocol (TCP/IP) Properties” window, tap “OK” to accept your changes and close the window. Tap “OK” in the “Local Area Connection Properties” window to finish.

Using Both DHCP and a Static IP Address

If you are using alternating networks with either DHCP or static IP addressing, you can use alternative settings that will enable simultaneous configurations of both DHCP and a static IP. This will allow you to connect to both of the networks without having to reconfigure each time you want to switch.

1. Follow steps 1 through 7 above when using a wired LAN connection.
2. Tap on the “Alternate Configuration” tab and select the “User configured” option. Enter the correct values in the appropriate fields. If you are unsure of which values or options to use,



contact your network administrator or the technical support line of your ISP.

When you have completed the entire configuration, tap "OK" to accept the settings and close the panel.

Bluetooth® Wireless Connectivity

Bluetooth® is a short-range wireless technology you can use to transfer data between your eo a7330 and other wireless devices that use Bluetooth, such as wireless keyboards and mice, cell phones, PDAs and even printers. Bluetooth-enabled devices can communicate with each other, without cables, up to a distance of approximately 30 feet.



NOTE: The wireless range can be shortened from interference caused by other wireless devices and/or by walls made of dense building materials.

Some of the activities available with Bluetooth wireless connectivity are:

- ❖ Using a wireless keyboard, such as TabletKiosk's Bluetooth Folding Keyboard, to enter data on your eo a7330.
- ❖ Connecting to your Bluetooth-capable cell phone to access the Internet and surf the web or download your e-mail.
- ❖ Setting up a Personal Area Network (PAN) to transfer files between your eo a7330 and another computer without the need of using Ethernet cables or even an existing wireless network.
- ❖ Print to a Bluetooth-enabled printer from across the room without connecting any cables.

Bluetooth Device Registration and Pairing

Different types of Bluetooth devices require slightly different procedures to register and pair them properly. Generally, to connect your eo a7330 to a Bluetooth enabled device:

1. Turn on the Bluetooth transmitter using the toggle switch on the top of your tablet.



2. Locate the Bluetooth icon in the System Tray and double-tap on the icon to open the Bluetooth Settings Manager. Alternatively, you can just double-tap on the icon to open the Bluetooth Settings Manager.

3. When the Bluetooth Settings Manager opens, tap on the "New Connection" button to start the "Add New Connection Wizard".



4. Place your Bluetooth device into "Discovery Mode" (you will have to consult your Bluetooth device's instruction manual if you do not know how to accomplish this task) and then tap on the "Next >" button to start the Discovery process.

5. When your Bluetooth device is found, tap on it in the list and then tap "Next >" to initiate the Pairing process.



6. If a dialog box opens on the eo a7330's screen asking you to input a Bluetooth Passkey, enter the number that appears in the window on your screen into your Bluetooth device



and, if applicable, hit <Enter> or <OK> on the Bluetooth device to commit the entry.



NOTE: Check “Share authentication information among all users”, if you want all user accounts on the system to have access to the Bluetooth device. Leave this unchecked if you want only your user account to be able to connect to the Bluetooth device.


7. Your device should now be connected to your eo a7330. If any advanced settings are required, you will be prompted to enter them. When complete, you should be returned to the Bluetooth application screen and your device should be listed.



If you have trouble connecting, make sure you completed the above steps in the time period that your Bluetooth device is in pairing mode. If your device exits pairing mode before you can connect, re-enable it and, depending on the state of the connection process, redo any applicable steps.



NOTE: Once a device has been registered, you usually won't need to register it again. You will, however, have to pair it. When you see this window upon system start-up, just place your device into pairing mode and it should connect automatically. If you do not wish to automatically connect a Bluetooth device at start-up, you can check the “Don't show this windows next time” check box and tap the “Cancel” button.

For more information about configuring and using the Bluetooth application, check out the online help system by either tapping  on your keyboard or choosing “Help” from the Bluetooth application menu.

This Page Left Blank Intentionally



Chapter 05

Securing Your eo a7330

Your eo a7330 is equipped with a Trusted Platform Module (TPM) that, when used in conjunction with specialized software, can help you better secure your data from intruders.


Used in conjunction with specialized security management software, a TPM offers facilities for generating cryptographic keys—as well as the ability to limit the use of such keys for authentication or encryption/decryption— and also random numbers. Typical use for such encryption would be to prevent unauthorized access to the data stored on your hard drive.

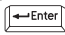
The TPM can also be used to authenticate a specific hardware device for use in platform authentication. For example, the TPM can be used to verify the authenticity of a specific hardware system for secured access.

This chapter will get you started by enabling the TPM for use with your security software management system.

BIOS Settings

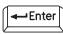


To take advantage of the enhanced security features of the Trusted Computing Platform, you must first enable it in the tablet's BIOS.

 **IMPORTANT:** A USB keyboard must be attached to the eo a7330T prior to powering on the system in order to enter and navigate the a7330's BIOS. The a7330D does not require a keyboard.

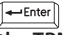
1. Power on or restart the eo a7330. As soon as the TabletKiosk logo screen appears, tap on the screen with the stylus pen (a7330D only) or hit the  key on the keyboard to bring up the SecureCore System Menu. From the menu, choose “Launch System Setup” to enter the BIOS.



NOTE: Alternatively, you can also press the third function button on the right side of the tablet when you see the TabletKiosk logo screen to open the SecureCore menu.

2. When the BIOS Menu appears, tap on “Security” or press the right arrow key on the keyboard to open to the menu screen.
3. If the TPM Support setting is set to “Disabled”, either tap on it, or use the down arrow key to highlight the “TPM Support” option and press  to change it to “Enabled”.
4. Tap on “TPM State” at the top of the screen, or hit the right arrow key on your keyboard to enter the menu screen.
5. If the Current TPM State reads “Disabled and Deactivated”, tap on the “Change TPM State” option, or press , until it changes to “Enable & Activate”.
6. Tap on the “Exit” menu item at the top of the screen and tap on “Exit Saving Changes” or just press the  key to save changes to the BIOS and restart the computer.



NOTE: If at any point you wish to clear the TPM module’s information and return the eo a7330 to its original “unowned” state, go back to the “TPM State” menu and tap on the “Change TPM State” option or press  until it reads “Clear”. When you save changes and exit the BIOS the TPM will be cleared.



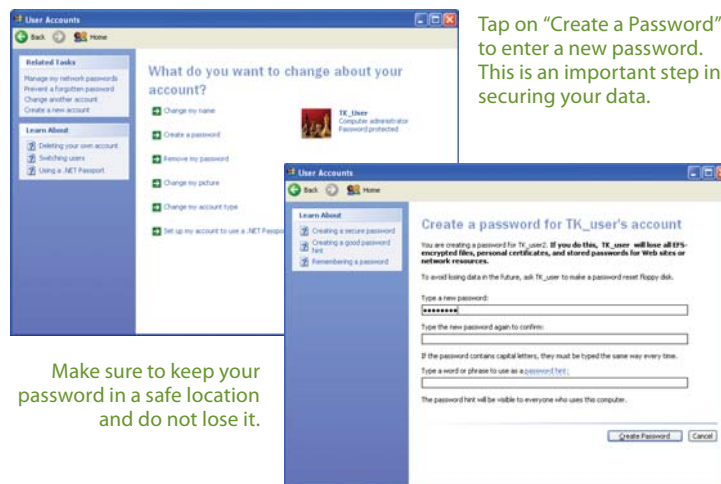
VERY IMPORTANT: If you lose your password and decide to clear the TPM, know that you will forever lose access to any data on the hard drive that is encrypted using the TPM’s current encryption key. Make sure that any data you wish to access in the future has been backed up in an unencrypted form before clearing the TPM. Also, if you decide to disable and deactivate the TPM, you will lose access to any data currently encrypted by the TPM until you reactivate it.

Creating a Windows Login Password

If you didn’t choose to do so during the initial setup procedure, the first step in securing your sensitive information is creating a Windows login password.

Creating the Password In Windows XP

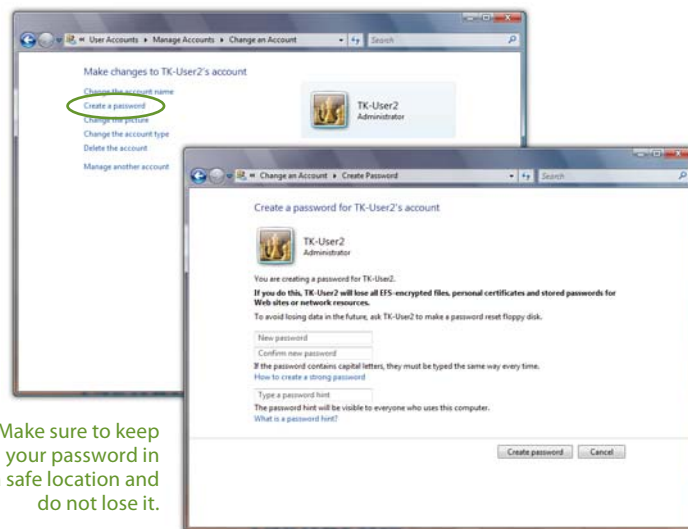
1. Go to the START Menu and tap on "Control Panel".
2. In the Control Panel window that appears, tap on "User Accounts" under "Pick a category".
3. Look under "or pick an account to change" and select your user account by tapping on it.
4. Tap on "Create a password". Enter a password and then confirm it. Enter a password hint if you wish and then tap on "Create Password" to accept your password.



Creating the Password In Windows Vista

1. Go to the START Menu and tap on "Control Panel".
2. In the Control Panel window that appears, tap on the "User Accounts" category title.
3. Under the User Accounts category, tap on "Change your Windows password".
4. From the "Make changes to your user account" screen, tap on "Create a password for your account".

5. Tap on the text input field labeled “New Password” in the window that opens and then enter a password of your choice. Tap in the “Confirm new password” field and enter it again exactly the same way. You may enter a hint in the “Type a password hint” if you so choose.
6. Tap the “Create password” button when you are satisfied with your password choice to commit the change.



It’s important when setting up a user account to manage the security settings on the tablet that the user account be granted administrator privileges. A standard user can still take advantage of the protections provided by the TPM, just not manage it.

Contact your IT support staff for more information on user privileges and how to assign them.

Setting Ownership of the TPM

After initializing the TPM functionality in the BIOS, the next step to securing your eo a7330 is to establish yourself as the tablet’s owner.

! **IMPORTANT:** Once you have set ownership of the TPM, it is vital that you store your password in a secure location and take care never to lose it. If you do, you will not be able to access the data you protected/encrypted using your security management software.


Windows XP Professional

As Windows XP lacks native support for TPM management, you will need to acquire a third party TPM security management application to take advantage of its capabilities.

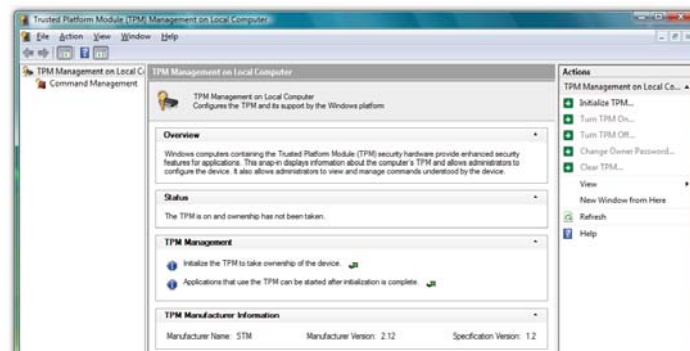
Install and configure the TPM security management software package of your choice and then refer to the user manual that accompanied the software for information on how to accomplish this important task.

Windows Vista

To set ownership of the TPM:

 **NOTE:** To perform the following procedure, you must be logged on to your eo a7330 with administrator privileges.

1. Go to the START Menu and tap on "All Programs > Accessories > Run" to open the "Run" dialog box.
2. In the "Open" field, enter "tpm.msc" (without the quotes) and tap "OK" to open the **TPM Management Console (TPM MC)**. Tap to proceed if the Windows UA prompt appears.

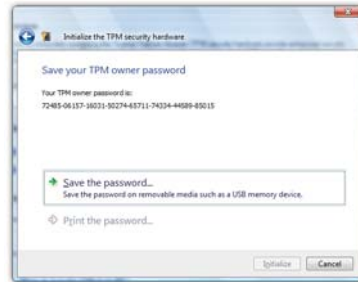
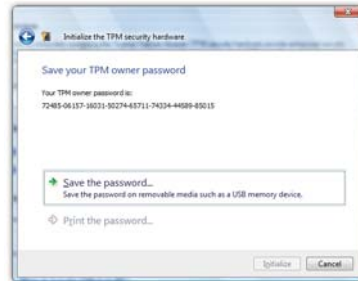
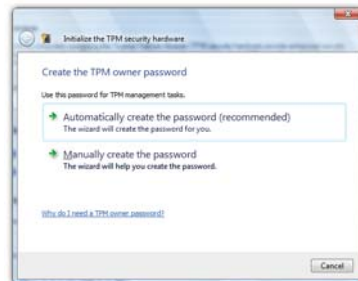
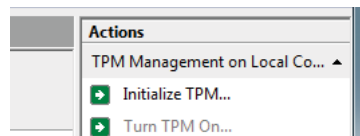


The TPM Management Console is where you initialize the TPM to set the ownership, turn on and off the TPM as well as clear the TPM.

If you followed the steps in the **BIOS Settings** section earlier in this chapter, the TPM MC should show the status of the TPM as “on” but “not owned”. If the TPM MC shows that you don’t have a compatible TPM or that it is not on, you either skipped the steps above or didn’t successfully save the settings in the BIOS.

3. In the “Actions” column on the right side panel of the TPM MC, tap on “Initialize TPM...”.
4. On the “Create the TPM owner password” page, tap “Automatically create the password (recommended)” to have Windows generate your password automatically, or “Manually create the password” to input your own.
5. After your password has been created or entered, tap “Save the password” to save a .tpm password file you can use to make changes to the TPM settings in the future.
6. In the “Save As” dialog box, select a location to save the password, and then tap “Save”. The password file is saved as computer_name.tpm.


! **IMPORTANT:** It is highly recommend that you save the TPM owner password to removable media.



7. Click "Print the password" if you want to print a hard copy of your password.

! **IMPORTANT:** It is highly recommend that you print a hard copy of your TPM owner password and store it in a safe location.

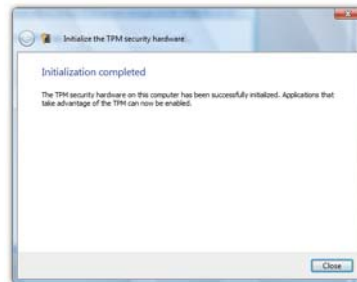
8. Click "Initialize" to confirm and set the ownership.

 **NOTE:** The process of initializing the TPM might take a few minutes to complete, so be patient. You will be informed when the process is complete.



9. Click "Close" to return back to the TPM MC main screen.

! **CAUTION:** Do not lose your password. If you do, you will be unable to make changes to your TPM that require the owner password unless you first clear the TPM. Once cleared, all data protected by the original password will become unavailable.



To learn more about using the TPM, including turning off the TPM and clearing the TPM, see the Help articles in the "Links & Resources" section at the bottom of the main pane of the TPM Management Console.



Chapter 06

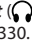
Troubleshooting

This chapter describes how to locate information and solve some of the problems you may encounter while using your **eo a7330**. If after reading this section, you are still unable to solve a problem, please check out more online resources at www.tabletkiosk.com/support or contact the TabletKiosk Authorized Dealer where you purchased your **eo a7330** Tablet PC.

See the section later in this chapter entitled **Contacting Your Dealer** for a list of the information you will need to supply in order to receive the proper support.

Some common hardware problems, possible causes and suggested solutions are presented in the following tables.

Audio Problems/Solutions

Problem	Possible Cause	Solution
There is no sound.	The volume is either muted or turned down.	Use the Windows Volume control icon in the System Tray (lower right corner of the Task Bar near the clock) to adjust the volume and disable muting.
No sound is audible through externally attached speakers or headphones connected to the Audio Out port on the left side of the eo a7330.	The speakers or the headphones are either connected to the wrong jack or are not securely plugged in.	Make sure to check that the speakers' or headphone's audio plug is securely connected to the Audio Out  port on the left side of the eo a7330.
	External speakers are not powered on.	Make sure the speakers are plugged in and turned on.

Battery Problems/Solutions

Problem	Possible Cause	Solution
Beeping sound.	The Tablet's battery is low and Hibernation mode is disabled.	Connect the computer to an external power source immediately.
The battery pack is warm after charging.	This is a normal condition.	No action is required.
The battery LED indicator does not light up whether the battery is charging or not.	No power is connected to the computer.	Check the power source and make sure the AC adapter is securely plugged into both the eo a7330 and the power outlet.
	The battery is above 10% charged.	Check the battery indicator icon in the System Tray of the Windows' Taskbar. When not attached to a power source, the LED indicator will only light up if battery power is very low.
	The battery pack is nearing the end of its life.	Replace the battery pack. Use only batteries recommended for use with the eo a7330 Ultra-Mobile PC.
Battery charge icon is not accurately displaying the remaining charge.	Battery Pack requires calibration.	Calibrate the battery pack as specified in the chapter entitled Battery Care and Usage .
	The battery pack is nearing the end of its life.	Replace the battery pack. Use only batteries recommended for use with the eo a7330 Ultra-Mobile PC.
Battery pack will not charge when attached to power source.	Power source voltage exceeds battery specifications.	The smart battery pack in your eo a7330 will shutdown and refuse to charge if power amperage or voltage exceeds its specifications. Check to make sure the power source is within range of the power specifications listed on the AC adapter that came with your eo a7330 Ultra-Mobile PC.
	Battery pack has overheated.	Shutdown the eo a7330 and allow the battery to cool down before restarting.
	AC adapter is not compatible with eo a7330.	Check to make sure that the AC adapter used to charge the batteries is the unit that came with your eo a7330.

Internet Problems/Solutions

Problem	Possible Cause	Solution
Unable to connect to the Internet.	Account for Internet Service Provider (ISP) is not properly configured.	Contact your ISP for assistance.
	No valid network connection detected.	Check the network status icon in the System Tray to make sure you are connected to a valid network. If not, rerun the Network Set-Up Wizard or contact your Network Administrator.
	Wireless transmitter is turned off.	Check the wireless power toggle on the top of the eo a7330 to make sure it is switched on.
	Wireless security settings are not correct.	Make sure that the wireless security settings of your eo a7330 match the settings of the wireless access point you are trying to connect to, and that the access Password (WPA), PIN (Protected Set-up), or Key (WEP) is correct.

Networking Problems/Solutions

Problem	Possible Cause	Solution
Cannot see the network.	Wireless transmitter is turned off.	Check the wireless power toggle on the top of the eo a7330 to make sure it is switched on.
Cannot connect to network.	Wireless security settings are incorrect.	Make sure that the wireless security settings of your eo a7330 match the settings of the wireless access point you are trying to connect to, and that the access Password (WPA), PIN (Protected Set-up), or Key (WEP) is correct.
The computer seems to connect, but doesn't see any other computers.	Correct workgroup or domain name is not set in computer's system properties.	Enter workgroup or domain name in "Computer Name" tab of the System Properties panel. Contact your network administrator if you don't know the proper name to use.
	Workgroup name is correctly set in system properties but cannot connect to any other computers on the network.	Run the Network ID wizard in the "Computer Name" tab of the System Properties panel and enter the correct network type and Domain or workgroup name.

Power Problems/Solutions

Problem	Possible Cause	Solution
The computer is connected to an external power source but does not turn on even though the battery pack is connected.	The battery pack may be defective.	Replace the battery pack. Use only batteries recommended for use with the eo a7330 Ultra-Mobile PC.
The Power/Standby light is off and the system turns off when it is left unattended.	The system has gone into Hibernation mode.	Slide the Power toggle switch to the right and hold for a second to resume.
The system will not turn on after it turns off when left unattended.	The system has gone into Hibernation mode because it is in a critical low-battery condition.	Connect the eo a7330 to an external power source.

USB Problems/Solutions

Problem	Possible Cause	Solution
An external device does not work when it is connected to one of the USB ports.	The external device is not receiving power.	Make sure that the external device is plugged into an electrical outlet.
	The external device is defective.	Try connecting the external device to another computer to determine if it operates properly.
	Windows is not recognizing the device properly.	Disconnect the device, power it off, reconnect the device and then turn it on.
		Disconnect the device, power it off, power it back on and then plug it back into the computer.
		Try the above two solutions, but plug the device back in to the other USB port.
Disconnect the device and power it off. Shut off the eo a7330 normally. Power on the device and plug it in. Power on the eo a7330.		

Touch Screen Display Problems/Solutions

Problem	Possible Cause	Solution
The screen is blank.	The system has gone into Standby or Hibernation mode.	Slide the Power toggle switch to the right and hold for a second or two to resume.
The mouse pointer will not follow the stylus pen properly.	The Digitizer requires calibrating.	Run the calibration routine in the Pen Tablet Properties Control Panel (see the section <i>Digitizer Set-up and Calibration</i> in the chapter <i>Using Your eo a7330 with Windows XP</i>)
The mouse pointer is not at the correction position when your finger touches the screen.	The touch screen requires calibrating.	Run the calibration routine in the Touch Settings Control Panel (see the section <i>Touch Screen Set-up and Calibration</i> in the chapter <i>Using Your eo a7330 with Windows XP</i>)
The mouse pointer will not follow the stylus pen properly even after being calibrated.	Touch screen / Digitizer controller drivers are corrupted.	This can happen over time. Check the TabletKiosk website to make sure you have the newest available drivers, then uninstall the current drivers and install the new drivers.
The screen does not rotate when the screen rotation button is pressed.	The VGA display driver is not set for rotation support.	Use the Intel Media Accelerator Driver control panel to enable the screen rotation option in the "Display Settings" tab.
	The VGA display drivers are corrupted.	This can happen over time. Check the TabletKiosk website to make sure you have the newest available drivers, then uninstall the current drivers and install the new drivers.
	The rotate screen button has been mapped to a different function by a user.	Open the Launch Button applet in the System Tray and check that the rotation button is mapped correctly to the rotation function. See the <i>Using Your eo a7330 with Windows XP</i> for more information on the Launch Button applet.

Contacting Your Dealer

If you still have a problem, the next step is to contact the dealer where you purchased your eo a7330.

Your dealer can determine if the problem will require that the computer be taken to a service center for repair. Before you call your dealer, please have the following information available:

- 1.** Which model do you have?
- 2.** What is the serial number?
- 3.** How is your computer configured? What peripheral devices are you using?
- 4.** What messages, if any, appear on the screen?
- 5.** What software were you running at the time of the problem?
- 6.** What have you done already to try to solve the problem?
If you have overlooked a step, your dealer may be able to solve the problem over the phone.

Recovering Your System Using the System Restore DVD

Your eo a7330 should have come with a System Restore DVD that matches the operating system that came pre-installed on your Tablet PC. If your tablet didn't come with a System Restore disc, please contact the dealer where you purchased your eo a7330 to request a disc.



NOTE: You will need to supply your system's serial number, located on the back of the eo a7330, with your request in order to receive your replacement System Restore disc.

What you will need before you begin:

1. Included Windows® XP Professional, Windows XP Tablet PC Edition, or Windows Vista® Business System Recovery DVD.



NOTE: It is important that you check to make sure that the disc you received matches the Operating System (OS) that came pre-installed on your eo a7330. If it is not, please contact the dealer where you purchased your eo a7330 for a replacement.

2. External USB DVD drive with its own power supply (not USB powered)
3. USB keyboard
4. USB mouse
5. USB hub or USB Expansion module

Recovering Your System with the Windows Vista® Business System Restore Disc:



IMPORTANT: This process is destructive to the data stored on your hard drive. All existing data will be lost. It is vital you back-up any files you wish to keep before you proceed.

Step 1: Set up the required hardware:

Plug the USB keyboard, USB mouse and USB DVD drive into the USB ports on the expansion module and main system. If you don't have the USB expansion module, plug the keyboard and mouse and DVD drive into a USB hub and then plug the hub into the USB port on the eo a7330. Make sure that the a7330 System

Restore Disc is in the USB DVD drive and that the drive has power and is on.


Step 2: Booting the eo a7330 to the Recovery Application on the System Restore Disc:

1. Power up your eo a7330 Ultra-Mobile PC.
2. If your drive has an existing partition (overwriting existing OS): When prompted, press any key to boot to the recovery DVD.

If your drive doesn't have an existing partition (new drive no OS): It will automatically load the recovery application.
3. Select the "Tools" Button and then the "Reset Partition" Button to continue.
4. Enter the partition size you wish to create for your OS. In general, you should use the number from the "Free Space" box as this will provide you with the largest system partition possible.
5. Select the File System desired: **FAT32** or **NTFS**. Click "Next" to continue. *(We recommend NTFS unless you require Windows 95/98/ME compatibility.)*
6. Select "OK" to proceed with partition creation.
7. Select "OK" if you understand that this process will **PERMANENTLY DELETE ALL OF THE EXISTING DATA ON THE HARD DRIVE.**
8. Select "OK" once the drive has been partitioned and then "Cancel" to return to the main menu.
9. Select the "Restore Now!" Button.
10. Select "OK" to prepare the partition you created above, and then select "OK" again to restore the operating system.
11. Select "Quit" once the restore process completes to reboot your eo a7330.

12. Immediately eject the DVD or unplug the USB DVD drive from your eo a7330 so the system will reboot from the restored hard drive.

Recovering Your System with the Windows® XP Professional or Tablet PC Edition System Restore Disc:

 **IMPORTANT:** This process is destructive to the data stored on your hard drive. All existing data will be lost. It is vital you back-up any files you wish to keep before you proceed.


Step 1: Set up the required hardware:

Plug the USB keyboard and USB mouse into the USB hub and plug the hub into one of the available USB ports on the tablet. Plug the USB cable from the DVD drive into the remaining USB port of the tablet. Make sure that the a230T System Restore Disc is in the USB DVD drive and that the drive has power and is on.

Step 2: Partitioning the Hard Drive (required for a new Hard Drive only):

If you are simply attempting to restore your eo a7330 using the hard drive that came with your system, you can skip this step and proceed to Step 3.

You will need to use the software that came with your new hard drive—or another third party program of your choosing that is designed to partition hard drives—in order to create a primary system partition to house the restored OS.

 **NOTE:** At a minimum, any bootable disc containing Microsoft's "FDISK.EXE" utility should be sufficient. If you attempt to start the restore utility before successfully partitioning the drive, the Windows installer will crash with a B.S.O.D. displaying a "STOP: 0x07" error.

Step 3: Booting the eo a7330 to the Recovery Application:

1. Power up your eo a7330 Tablet PC.
2. It will start from the DVD and automatically load the recovery application.
3. Select "OK" to proceed with partition creation.

4. Select "OK" if you understand that this process will **PERMANENTLY DELETE ALL OF THE EXISTING DATA ON THE HARD DRIVE.**
5. Select "Quit" once the restore process completes to reboot your eo a7330.
6. Immediately eject the DVD or unplug the USB DVD drive from your eo a7330 so the system will reboot from the restored hard drive.



NOTE: If you do not, or cannot, remove the external drive from your tablet, make sure to go back into the BIOS upon restart to change the "1st BOOT" option back to the internal hard drive.

What to do After You Have Restored Your System

When your eo a7330 first boots up after a successful system restoration, it will behave exactly as it did the very first time you turned it on. You will need to finish the Windows localization procedure, customize the installation (including the networking settings) and then reinstall of your applications.

Before reinstalling your applications, we recommend that you check the [Downloads section](#) of the TabletKiosk website for any drivers or applications that might have been updated after the installation disc was created.

Lastly, make sure to check the Windows Update site for any new **Important** or **Critical** patches.

This Page Left Blank Intentionally



Chapter 07

Specifications

Processor

- ❖ Intel® Atom™ Z530P (1.60 GHz)
- ❖ 45nm Hi-K metal gate silicon technology (2.2W max TDP)
- ❖ On-die, primary 32-KB instructions cache and 24-KB write-back data cache
- ❖ 133 MHz Source Synchronous Front Side Bus (FSB)
- ❖ On-die 512-KB, 8-way L2 cache
- ❖ Support for IA 32-bit architecture
- ❖ Intel® Streaming SIMD Extensions-2 and -3 (Intel® SSE2 and Intel® SSE3) support and Supplemental Streaming SIMD Extension 3 (SSSE3) support
- ❖ Intel® Hyper Threading Technology (2-threads)
- ❖ Intel® Enhanced SpeedStep® Technology
- ❖ Intel® Virtualization Technology (Intel® VT)
- ❖ Execute Disable Bit support for enhanced security
- ❖ Supports C0/C1(e)/C2(e)/C4(e) power states
- ❖ Intel Deep Power Down Technology (C6)
- ❖ L2 Dynamic cache sizing

Chipset

- ❖ Intel® System Controller Hub (SCH) US15WP
- ❖ Integrated single chip graphics, memory and I/O controller

- ❖ Low power thermal design consumes less than 2.3W
- ❖ Integrated DDR2 memory controller with 64-bit wide interface and maximum configuration of 2.0 GB DRAM
- ❖ Integrated USB Host Controller supports USB 1.1 and 2.0.

Power Management

- ❖ ACPI 1.0b and 2.0 compliant
- ❖ ACPI S0, S3, S4, S5
- ❖ CPU states C0, C1, C2, C3, C4, C6 states
- ❖ PCI Express Link states: L0, L0s, L1, L2, L3
- ❖ Rapid Power Management

Memory

- ❖ 1x DDR2 533/400 MHz SODIMM slot (up to 2.0 GB)
- ❖ Single 64-bit wide channel
- ❖ 2.0 GB standard on a7330D, 1.0 GB standard on a7330T

Battery

- ❖ 2x Modular battery bays
- ❖ 38W Lithium-Ion 4-cell (2S2P) Smart IC Main battery provides 4 ~ 5 hours of power
- ❖ 23.5W Lithium-Polymer 2-cell (2S1P) Smart IC battery for 7 hours of total power (standard with a7330D, optional with a7330T)
- ❖ Over Charge Protection, Over Discharge Protection, Over Current and Output Short Protection, Over Thermal Protection

Hard Drive

- ❖ 1.8" format, 8mm/5mm height, configurations from 80GB
- ❖ Ultra DMA 100 PATA I/F (Bus transfers up to 100 MB/sec.)
- ❖ Automatic retry/error correction for high data integrity

- ❖ Shock resistant — operating: 4,900 m/s² (500G)
non-operating: 14,700 m/s² (1,500G)
- ❖ Quiet — 14dB idle, 20dB random track seek
- ❖ 300,000 hours MTTF (Mean Time to Failure) possible.

Video

- ❖ Intel® GMA 500 provides integrated 2D and 3D graphics
- ❖ MPEG-2/MPEG-4/H.264/VC-1/WMV-9 HD video decoder
- ❖ DirectX 9.1 compatible
- ❖ Two pipe scalable unified shader implementation (Fill rate: 2 pixels per clock, Vertex rate: one triangle 15 clocks)
- ❖ Windows® Aero (Glass) Technology capable
- ❖ Screen rotates 0°, 90°
- ❖ 1024 x 600 Landscape, 600 x 1024 Portrait
- ❖ Dual display support
- ❖ External Display up to UXGA (1600x1200) with CRT Hot Plug support (when paired with optional Docking Cradle)

Display

- ❖ Toshiba LTD121KCAV 12.1" TFT XGA LCD Wide Angle Display
- ❖ TransTouch Technology Passive Resistive Touch Screen
- ❖ PenMount 6000 USB Controller Chipset (PM6300)
- ❖ 160 points per second sample rate
- ❖ 1024 x 1024 resolution

Audio

- ❖ Intel® High Definition Audio Interface
- ❖ Realtek ALC269 HD Audio Codec
- ❖ 98dB Signal-to-Noise Ratio (A-weighting) for both DAC output and ADC input

- ❖ 2+2 channel 16/20/24-bit / 44.1KHz/48KHz/96KHz/192KHz sampling rate output (DAC)
- ❖ 4 channel 16/20/24-bit / 44.1KHz/48KHz/96KHz sampling rate input (ADC)
- ❖ EAX™ 1.0 & 2.0, DirectSound 3D™, A3D™, and I3DL2 compatible
- ❖ HRTF 3D Positional Audio in Windows XP
- ❖ Built-in Stereo Speakers and Dual Digital Microphone Array for added fidelity and accuracy
- ❖ 3.5 mm Headphone & Microphone Plug 'n Play Jacks

WiFi Wireless

- ❖ Intel® WiFi Link 5100 PCIe Half Mini Card with Power ON/OFF Switch
- ❖ MIMO (Multiple Input, Multiple Output) support 802.11n with 1x2 MIMO
- ❖ Dual-Band/Quad-Mode support (IEEE 802.11a/b/g/n), compatible with IEEE 802.11d /e (Quality of Service [QoS]), 802.11h, and European Telecommunication Standards Institute [ETSI] specifications), and IEEE 802.11i (pre-authentication)
- ❖ Reduced power consumption in idle associated (25mW)
- ❖ EIT v4.0 support
- ❖ Automatic switching between the two bands (2.4 GHz and 5.0 GHz)
- ❖ Uses the 5.170 to 5.825-GHz Industrial, Scientific, and Medical (ISM) frequency band as defined by the IEEE 802.11a specification
- ❖ Uses the 2.412- to 2.497-GHz ISM frequency band defined by the IEEE 802.11b/g specifications
- ❖ Can operate on a 40MHz wide channel
- ❖ Provides 128- and 64-bit WEP encryption, hardware AES (support for key sizes of 128 bits, 192 bits, and 256 bits)

- ❖ Hardware capability to support Cisco* Compatible Extensions v1/2/3/4
- ❖ Supports IEEE 802.11 Power Save Protocol (PSP)
- ❖ Supports Basic Service Set (BSS) (AP) and Independent Basic Service Set (IBSS) (peer-to-peer) modes (in legacy 802.11b/g only)
- ❖ Supports Intel® Wireless Coexistence System (WCS) Phase II for Bluetooth® devices
- ❖ Supports WiFi-WiMAX coordination
- ❖ Wake on WLAN (WoWLAN) support

Bluetooth® Wireless

- ❖ CastleNet BTC04R200(T) Bluetooth® 2.1+EDR built-in USB module with Power ON/OFF Switch

GPS Module

- ❖ Ublox UBX-G5010 built-in USB module
- ❖ 50-channel u-blox engine with more than one million effective correlators
- ❖ <1 second Time To First Fix for Hot Aided Starts
- ❖ SuperSense® Indoor GPS providing best-in-class acquisition and tracking sensitivity
- ❖ Accelerated start-up at weak signals with KickStart feature
- ❖ Supports AssistNow Online and AssistNow Offline A-GPS services; OMA SUPL compliant
- ❖ Hybrid GPS (L1 freq., C/A code), GALILEO (Open Service L1 freq.) and SBAS (WAAS, EGNOS, MSAS, GAGAN) engine
- ❖ 4 Hz position update rate, operational up to 515 m/s (1,000 knots)
- ❖ RoHS compliant and green

Gigabit Ethernet Embedded LAN Controller

- ❖ Realtek RTL8111C-GR PCI Express 1.1
- ❖ Integrated 10/100/1000 transceiver
- ❖ Supports pair swap/polarity/skew correction
- ❖ Crossover Detection and Auto-Correction
- ❖ Wake-on-LAN and remote wake-up
- ❖ Microsoft® NDIS5, NDIS6 Checksum Offload (IPv4, IPv6, TCP, UDP) and Segmentation Task-Offload (Large send and Giant send)
- ❖ Full Duplex flow control (IEEE 802.3x)
- ❖ IEEE 802.3, IEEE 802.3u, IEEE 802.3ab compliant
- ❖ IEEE 802.1P Layer 2 Priority Encoding
- ❖ IEEE 802.1Q VLAN tagging
- ❖ Supports power down / link down power saving

TPM Security

- ❖ Infineon Single-Chip SLB 9635 TT 1.2 Trusted Platform Module (TPM)
- ❖ Trusted Group Computing (TCG) v1.1B / v1.2 compliant
- ❖ Security architecture based on Infineon security controller family
- ❖ ROM for TCG firmware
- ❖ EEPROM for TCG firmware and data
- ❖ Hardware hash accelerator for SHA-1 algorithm
- ❖ Advanced Crypto Engine (ACE) for asymmetric key operations (up to 2048-bit key length)
- ❖ Power saving sleep mode

I/O Ports

- ❖ 1x 4-pin USB 2.0 (additional 2x USB with USB Module that comes standard on a7330D, optional for a7330T)

- ❖ 10/100/1000 Ethernet (RJ45)
- ❖ 1x DC-In
- ❖ 1x 3.5mm Audio Out, 1x 3.5mm Audio In
- ❖ 1x Cradle Connector
*(Optional Docking Cradle adds 3x USB 2.0 ports,
1x RS-232 serial port, 1x 15-pin D-Sub connector (VGA),
1x RJ45 jack for 10/100 Mbps Ethernet LAN,
1x DC-In with power pass-thru, main and secondary battery
charging slots)*

Weight

- ❖ .99 kg (2.18 lbs.) with main battery pack
- ❖ 1.16 kg (2.56 lbs) with main and secondary battery packs

Measurements

- ❖ 213 mm x 140 mm x 29.5 mm (8.4 in x 5.5 in x 1.16 in)

Case Color

- ❖ Black

LED Indicators

- ❖ Power (ON: blue, Standby: blinking)
- ❖ Battery (Charging: orange, Low (<10%): orange blinking, Fully charged with DC connected: green)
- ❖ Hard Drive (Activity: blue blinking)
- ❖ Wireless Networking (WiFi ON: blue), Bluetooth® (ON: blue)

Function Buttons (Right Side)

- ❖ SAS (Ctrl+Alt+Del)
- ❖ Screen Rotation
- ❖ User Programmable
- ❖ User Programmable

Control Switches (Top)

- ❖ System Power Switch
- ❖ Bluetooth® Transmitter On/Off
- ❖ Wireless Networking Transmitter On/Off

AC Adapter

- ❖ Input voltage (nominal): 100 ~ 240 Vac
- ❖ Input voltage (maximum): 90 ~ 265 Vac
- ❖ Input Frequency: 47 ~ 63Hz
- ❖ Input current: 2.4A maximum at 90 Vac
- ❖ Output voltage: 11.4V ~ 12.6V DC
- ❖ Output current: 4.16A maximum
- ❖ Output Power: 50W
- ❖ Ripple & Noise Maximum: 380 mVp-p
- ❖ SCP: Short Circuit Protection plus Auto-Recovery ≤ 2 min.
- ❖ OVP: Over-Voltage Protection, Latch Mode, up to 18.0Vdc maximum
- ❖ OCP: Over-Current Protection, Auto-Recovery, up to 10.0A maximum
- ❖ OTP: Over-Temperature Protection to prevent catastrophic failure from overheating.

Operating Environment

- ❖ Temperature: +5°C ~ +35°C (+41°F ~ +95°F)
- ❖ Humidity: 20% ~ 80% (without condensation)

Storage Environment

- ❖ Temperature: -20°C ~ +65°C (4°F ~ 149°F)
- ❖ Humidity: 20% ~ 80% (without condensation)

This Page Left Blank Intentionally



310 782 1201 tel
310 782 1205 fax
www.tabletkiosk.com

