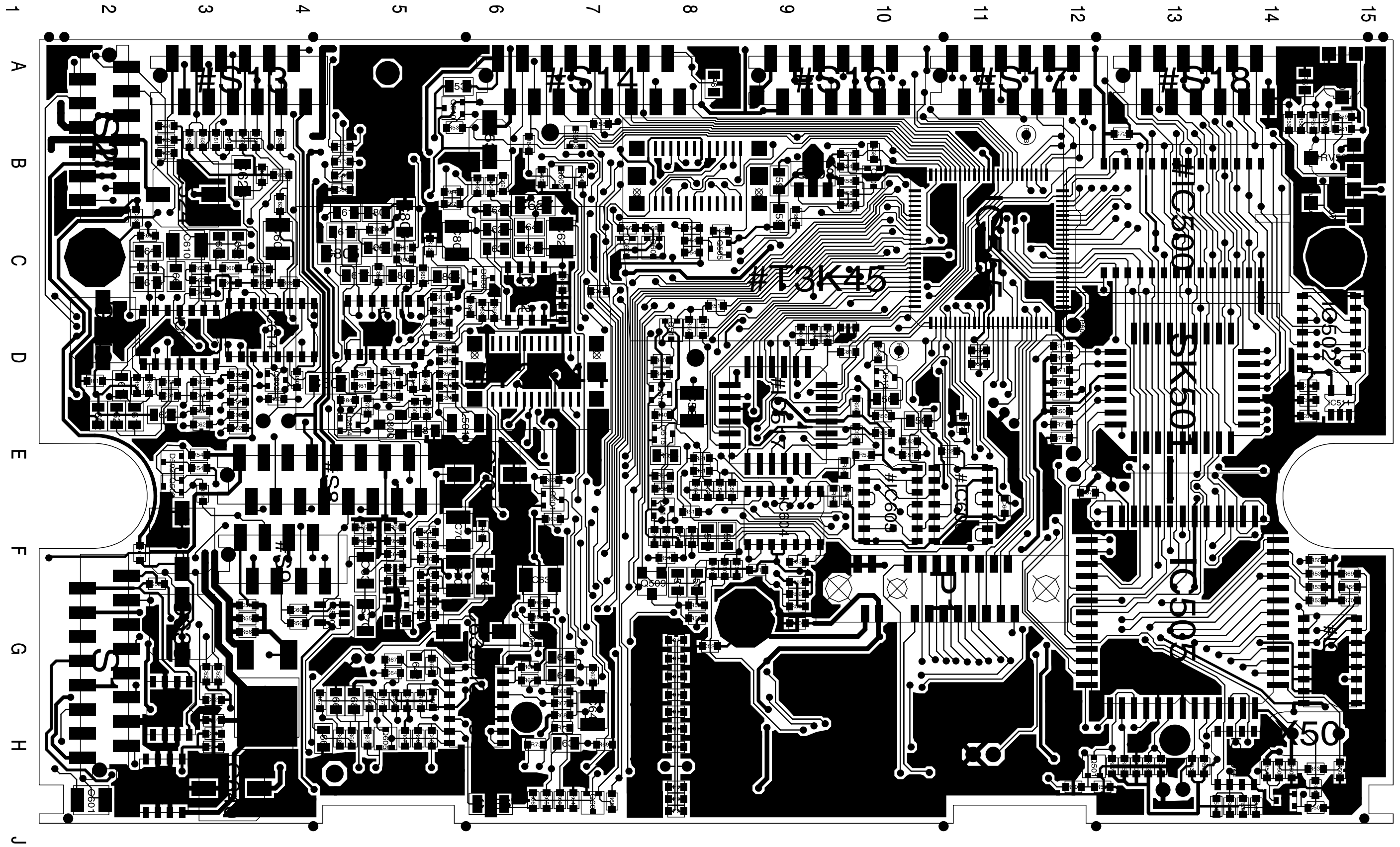
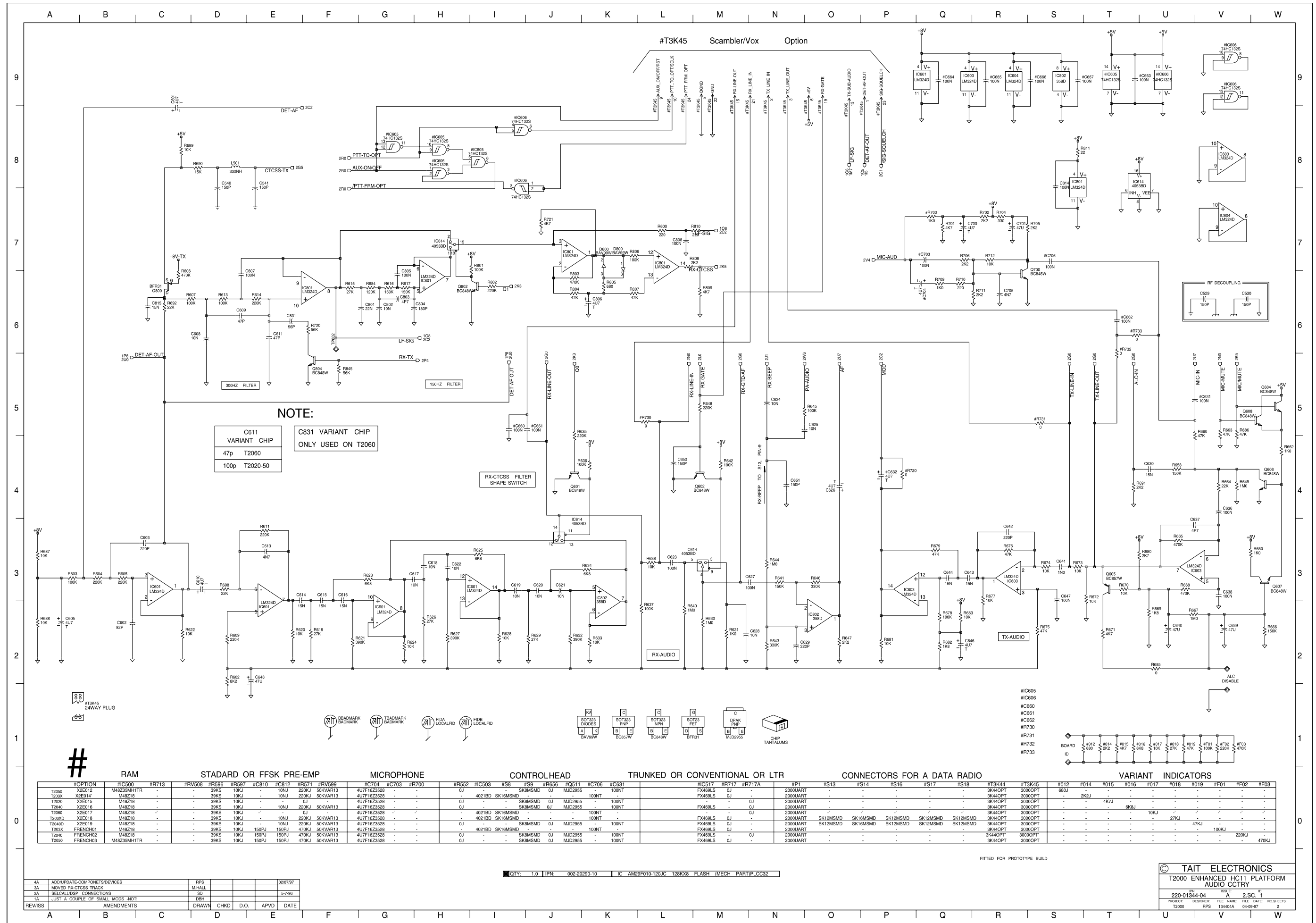


T2020, T203X, T2040, T2050 & T2060
HC11 Logic PCB Layout
Bottom Side
IPN 220-01344-04



T2020, T203X, T2040, T2050 & T2060
HC11 Logic PCB Layout
Top Side
IPN 220-01344-02



NOTE:

C611	VARIANT CHIP
47p	T2060
100p	T2020-50

C831 VARIANT CHIP
ONLY USED ON T2060

T3K45
24WAY PLUG

#



OPTION	RAM	STADARD OR FFSK PRE-EMP	MICROPHONE	CONTROLHEAD	TRUNKED OR CONVENTIONAL OR LTR	CONNECTORS FOR A DATA RADIO	VARIANT INDICATORS
T2050	X2E012	M48Z35MH1TR	39KS 10KJ	4U7F16Z3528	2000UART	#S13 #S14 #S16 #S17 #S18	#F01 #F02 #F03
T203X	X2E014	M48Z218	39KS 10KJ	4U7F16Z3528	2000UART	#S13 #S14 #S16 #S17 #S18	#F01 #F02 #F03
T2030	X2E015	M48Z218	39KS 10KJ	4U7F16Z3528	2000UART	#S13 #S14 #S16 #S17 #S18	#F01 #F02 #F03
T2040	X2E016	M48Z218	39KS 10KJ	4U7F16Z3528	2000UART	#S13 #S14 #S16 #S17 #S18	#F01 #F02 #F03
T2060	X2E017	M48Z218	39KS 10KJ	4U7F16Z3528	2000UART	#S13 #S14 #S16 #S17 #S18	#F01 #F02 #F03
T2030XD	X2E018	M48Z218	39KS 10KJ	4U7F16Z3528	2000UART	#S13 #S14 #S16 #S17 #S18	#F01 #F02 #F03
T2040D	X2E019	M48Z218	39KS 10KJ	4U7F16Z3528	2000UART	#S13 #S14 #S16 #S17 #S18	#F01 #F02 #F03
T203X	FRENCH01	M48Z218	39KS 10KJ	4U7F16Z3528	2000UART	#S13 #S14 #S16 #S17 #S18	#F01 #F02 #F03
T2040	FRENCH02	M48Z218	39KS 10KJ	4U7F16Z3528	2000UART	#S13 #S14 #S16 #S17 #S18	#F01 #F02 #F03
T2050	FRENCH03	M48Z35MH1TR	39KS 10KJ	4U7F16Z3528	2000UART	#S13 #S14 #S16 #S17 #S18	#F01 #F02 #F03

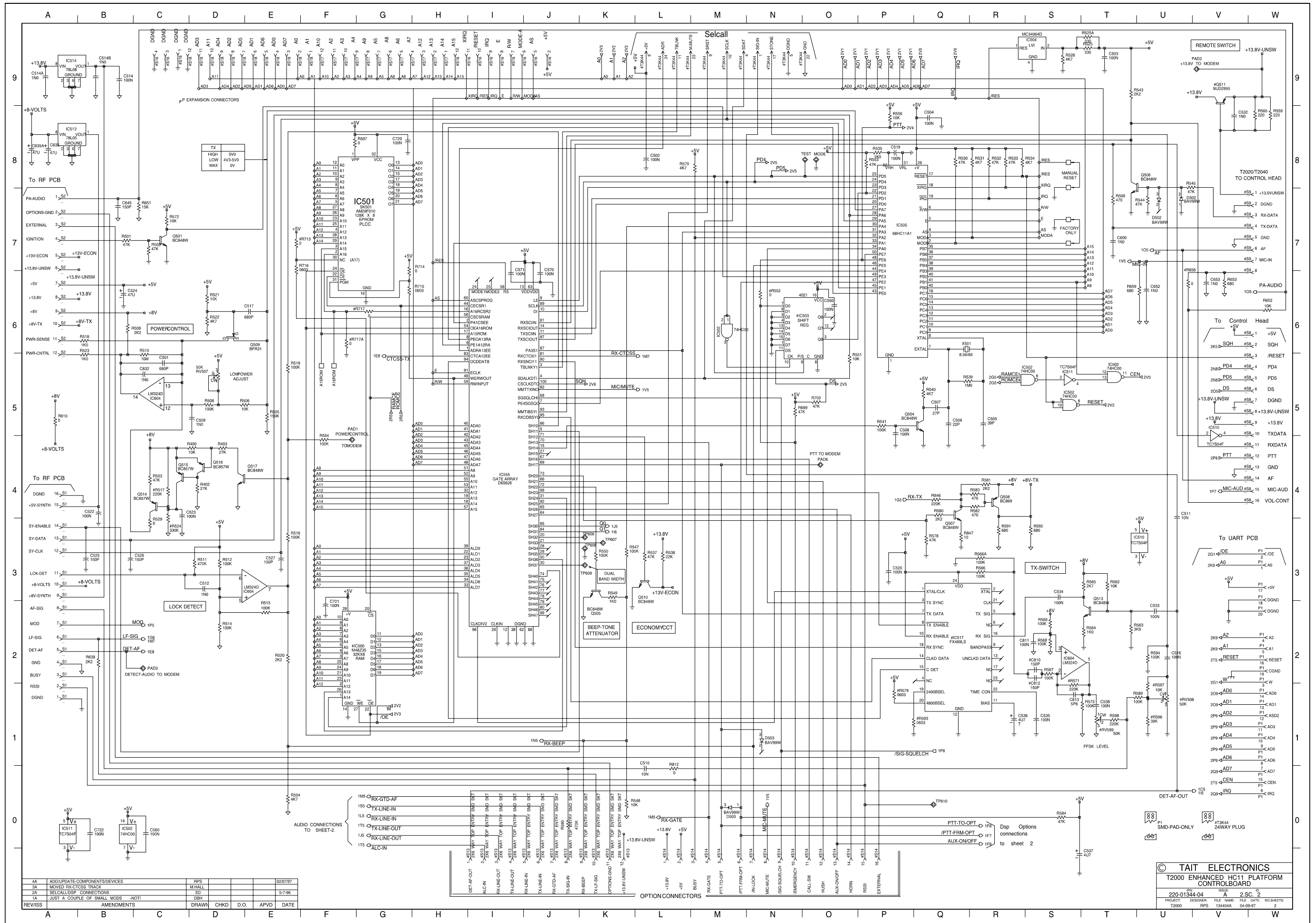
FITTED FOR PROTOTYPE BUILD

QTY: 1.0 IPN: 002-20290-10 IC AM29P010-120JC 128KX8 FLASH (MECH PART)PLCC32

REV	DATE	BY	CHKD	APVD
4A	02/07/97	RFS		
3A		M.HALL		
2A	5-7-96	SD		
1A		DBH		

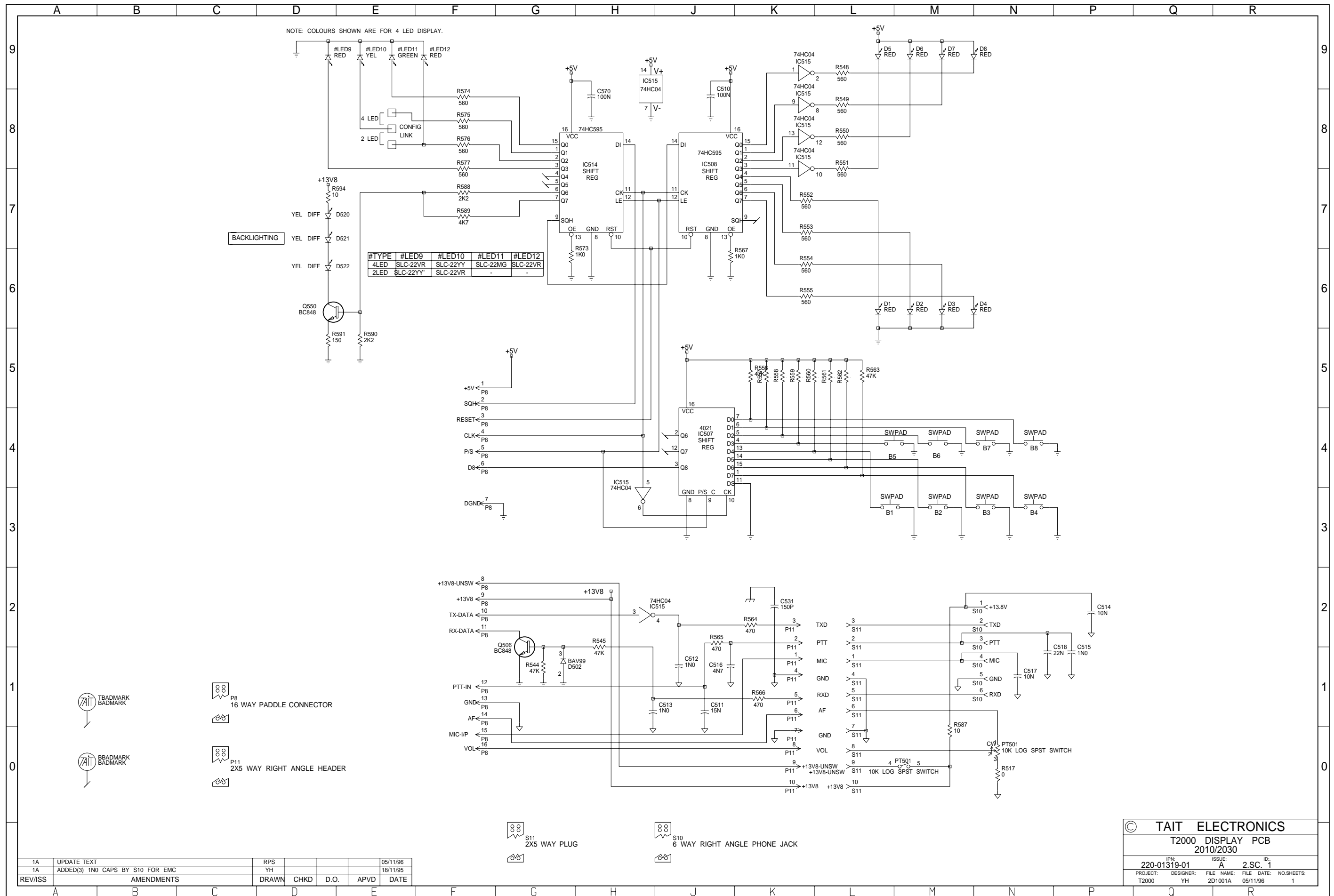
TAIT ELECTRONICS
T2000 ENHANCED HC11 PLATFORM
AUDIO CTRY

REV: A 2 SC 1
PROJECT: 220-01344-04
DESIGNER: FILE NAME: 1344A04
RFS DATE: 04-09-97 NO. SHEETS: 2



REV	DESCRIPTION	DATE
4A	ADD/UPDATE COMPONENTS/DEVICES	02/07/97
3A	MOVED RX-GTSS TRACK	
2A	ADDED/REMOVED CONNECTORS	5-7-96
1A	JUST A COUPLE OF SMALL MODS -NOT!	
REVISS		

© TAIT ELECTRONICS
 T2000 ENHANCED HC11 PLATFORM CONTROL BOARD
 IPN 220-01344-04
 PROJECT: DESIGNED FILE NAME: DATE: 2 SC. 2
 T2000 RPS 134494A 04-09-97 2

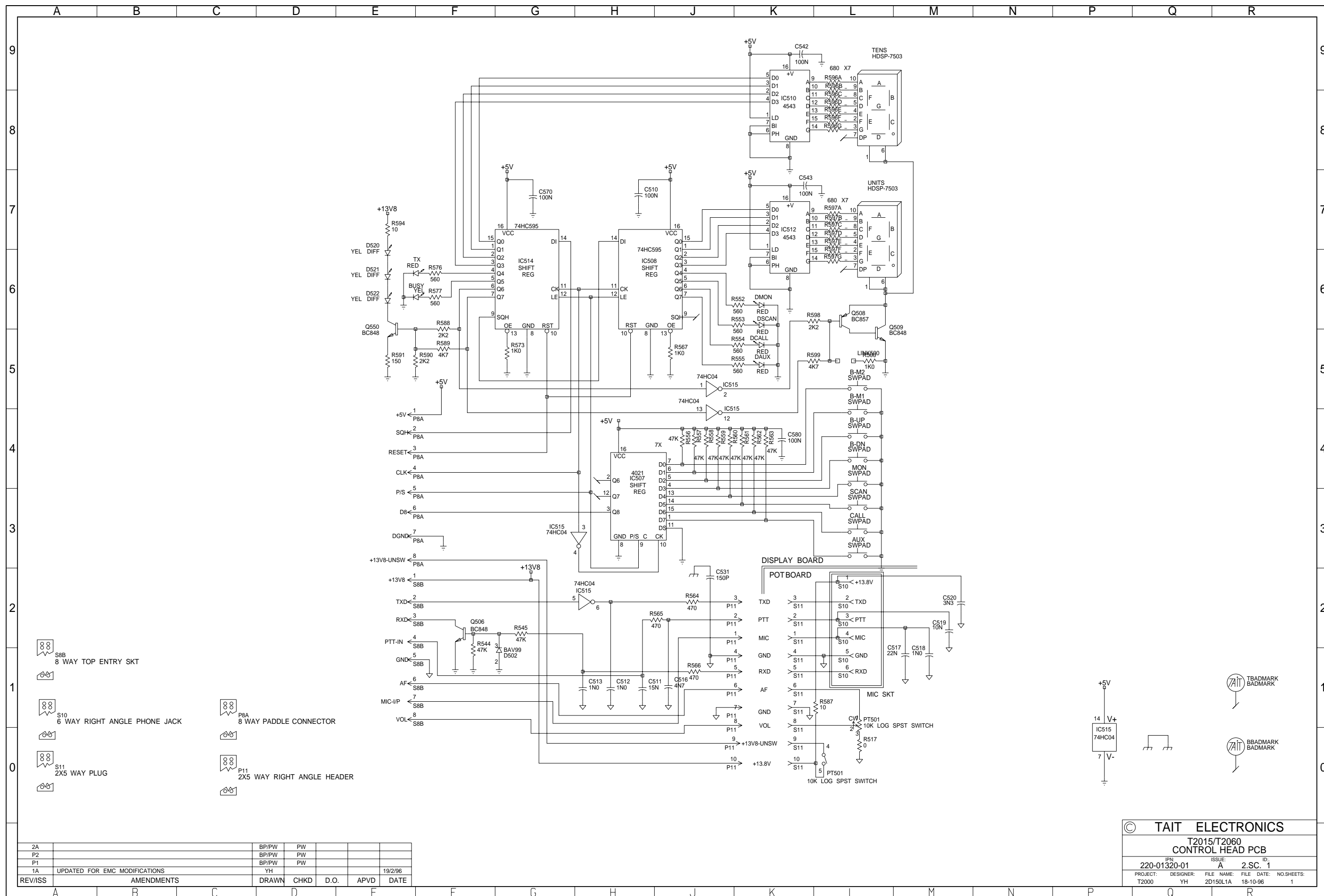


1A	UPDATE TEXT	RPS			05/11/96
1A	ADDED(3) 1N0 CAPS BY S10 FOR EMC	YH			18/11/95
REV/ISS	AMENDMENTS	DRAWN	CHKD	D.O.	APVD DATE

© TAIT ELECTRONICS
T2000 DISPLAY PCB
2010/2030

IPN: 220-01319-01
ISSUE: A 2.SC. 1

PROJECT: T2000 DESIGNER: YH FILE NAME: 2D1001A FILE DATE: 05/11/96 NO.SHEETS: 1



S8B
8 WAY TOP ENTRY SKT

S10
6 WAY RIGHT ANGLE PHONE JACK

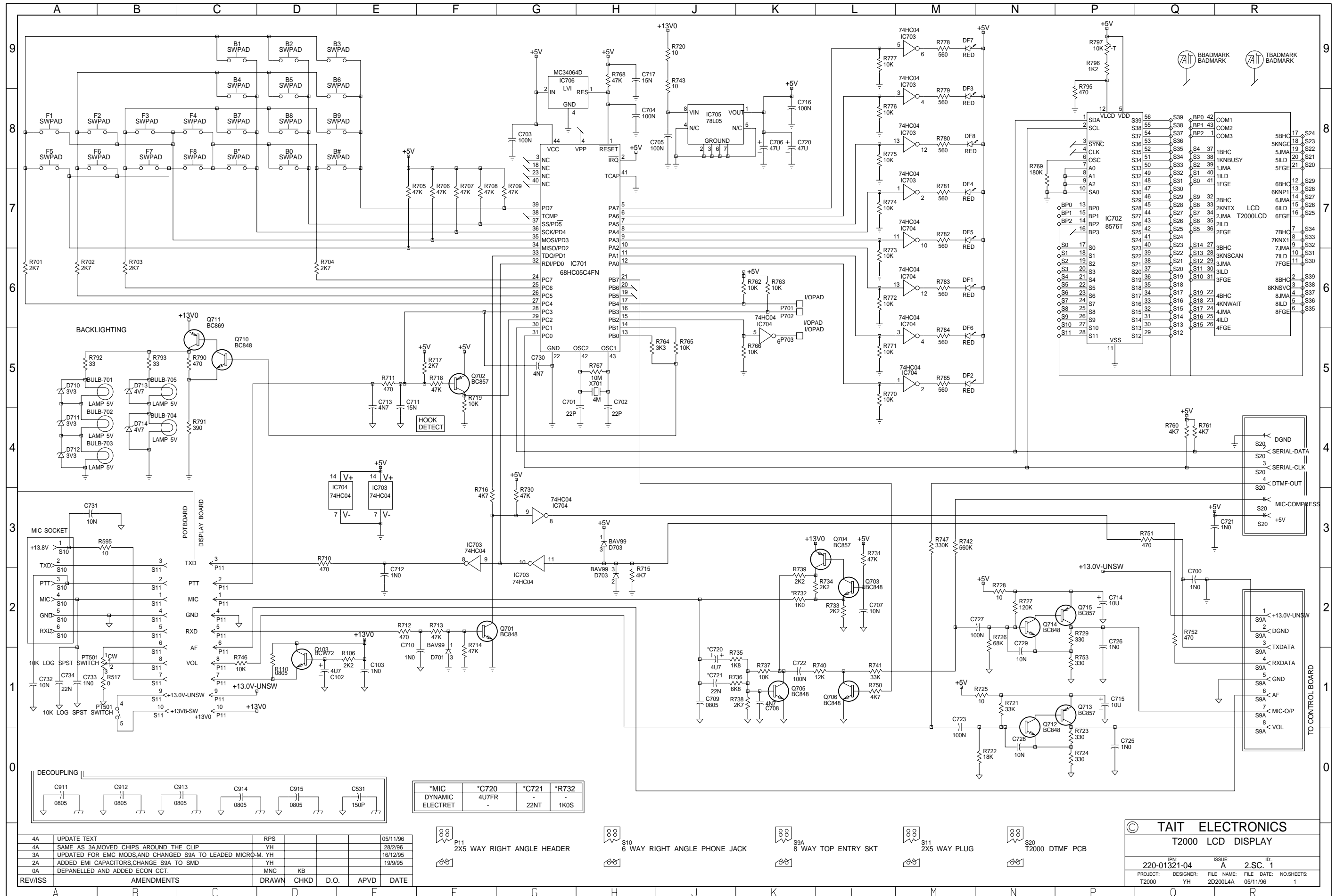
S11
2X5 WAY PLUG

P8A
8 WAY PADDLE CONNECTOR

P11
2X5 WAY RIGHT ANGLE HEADER

2A		BP/PW	PW			
P2		BP/PW	PW			
P1		BP/PW	PW			
1A	UPDATED FOR EMC MODIFICATIONS	YH			APVD	19/2/96
REV/ISS	AMENDMENTS	DRAWN	CHKD	D.O.	APVD	DATE

© TAIT ELECTRONICS					
T2015/T2060 CONTROL HEAD PCB					
IPN:	220-01320-01	ISSUE:	A	ID:	2.SC. 1
PROJECT:	T2000	DESIGNER:	YH	FILE NAME:	2D150L1A
		FILE DATE:	18-10-96	NO. SHEETS:	1



REV/ISS	AMENDMENTS	DRAWN	CHKD	D.O.	APVD	DATE
4A	UPDATE TEXT				RPS	05/11/96
4A	SAME AS 3A MOVED CHIPS AROUND THE CLIP				YH	28/2/96
3A	UPDATED FOR EMC MODS AND CHANGED S9A TO LEADED MICRO-M				YH	16/12/95
2A	ADDED EMI CAPACITORS, CHANGE S9A TO SMD				YH	19/9/95
0A	DEPANELLED AND ADDED ECON CCT.				MNC KB	

*MIC	*C720	*C721	*R732
DYNAMIC ELECTRET	4U7FR	22NT	1K0S

P11 2X5 WAY RIGHT ANGLE HEADER

S10 6 WAY RIGHT ANGLE PHONE JACK

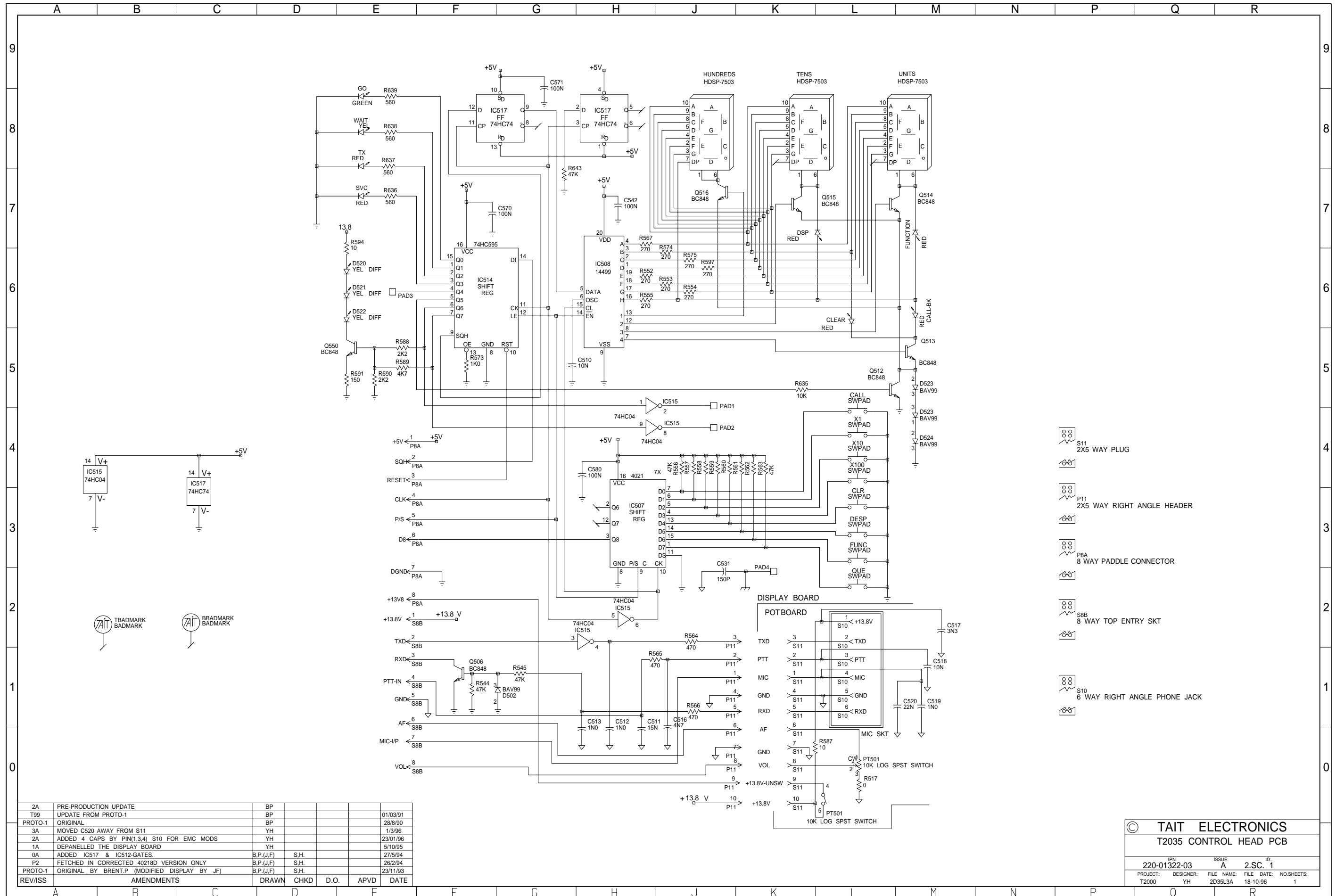
S9A 8 WAY TOP ENTRY SKT

S11 2X5 WAY PLUG

S20 T2000 DTMF PCB

© TAIT ELECTRONICS
T2000 LCD DISPLAY

IPN: 220-01321-04	ISSUE: A	ID: 2.S.C. 1
PROJECT: T2000	DESIGNER: YH	FILE NAME: 2D200L4A
		FILE DATE: 05/11/96
		NO. SHEETS: 1

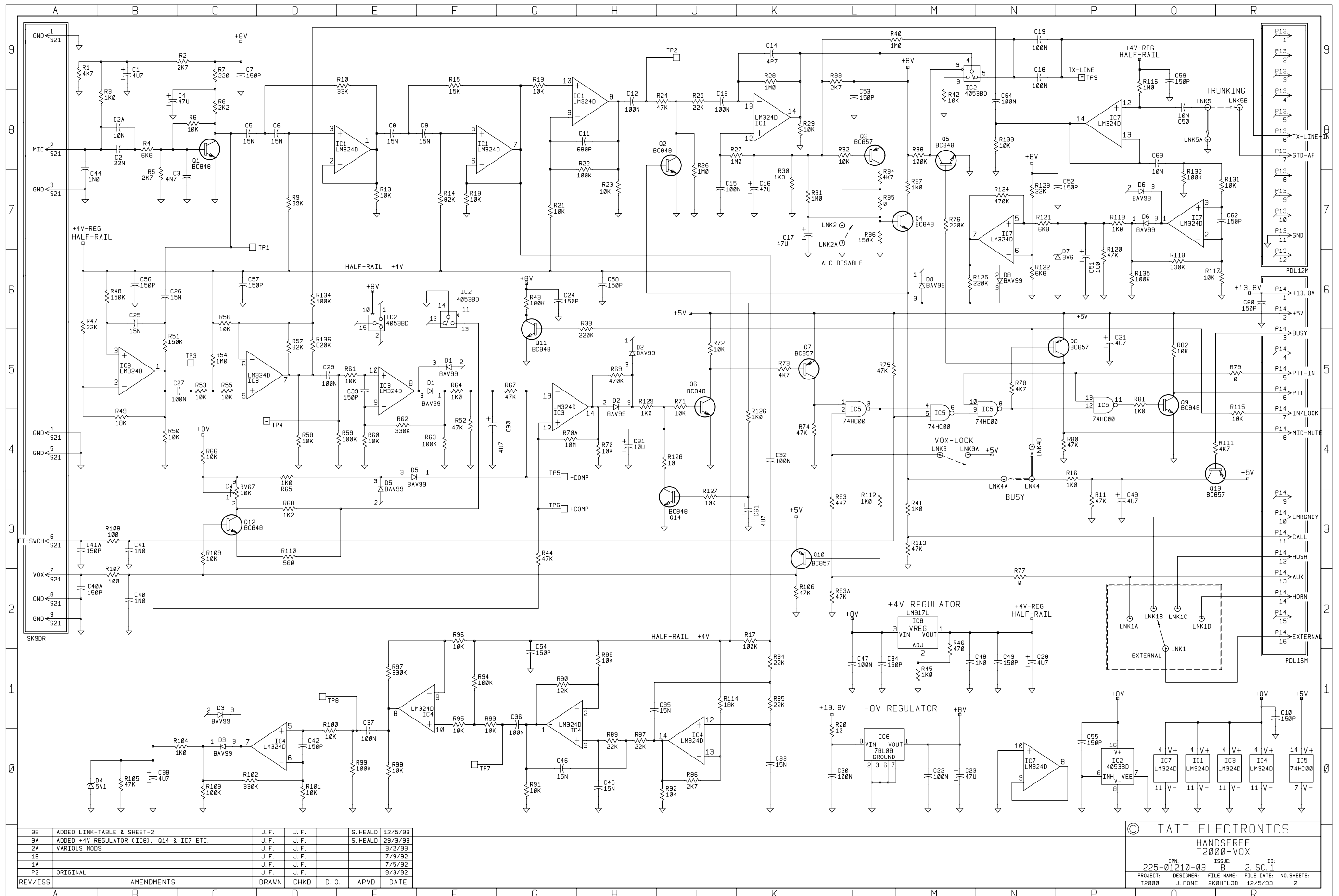


- S11
2X5 WAY PLUG
- P11
2X5 WAY RIGHT ANGLE HEADER
- P8A
8 WAY PADDLE CONNECTOR
- S8B
8 WAY TOP ENTRY SKT
- S10
6 WAY RIGHT ANGLE PHONE JACK

2A	PRE-PRODUCTION UPDATE	BP				01/03/91
T99	UPDATE FROM PROTO-1	BP				28/8/90
PROTO-1	ORIGINAL	BP				1/3/96
3A	MOVED C520 AWAY FROM S11	YH				23/01/96
2A	ADDED 4 CAPS BY PIN(1,3,4) S10 FOR EMC MODS	YH				5/10/95
1A	DEPANELLED THE DISPLAY BOARD	YH				27/5/94
0A	ADDED IC517 & IC512-GATES.	B.P.(J.F)	S.H.			26/2/94
P2	FETCHED IN CORRECTED 40218D VERSION ONLY	B.P.(J.F)	S.H.			23/11/93
PROTO-1	ORIGINAL BY BRENT.P (MODIFIED DISPLAY BY JF)	B.P.(J.F)	S.H.			
REV/ISS	AMENDMENTS	DRAWN	CHKD	D.O.	APVD	DATE

© TAIT ELECTRONICS
T2035 CONTROL HEAD PCB

IPN:	220-01322-03	ISSUE:	A	ID:	2.S.C. 1
PROJECT:	T2000	DESIGNER:	YH	FILE NAME:	2D35L3A
		FILE DATE:	18-10-96	NO.SHEETS:	1



3B	ADDED LINK-TABLE & SHEET-2	J. F.	J. F.	S. HEALD	12/5/93
3A	ADDED +4V REGULATOR (IC8). 014 & IC7 ETC.	J. F.	J. F.	S. HEALD	29/3/93
2A	VARIOUS MODS	J. F.	J. F.		3/2/93
1B		J. F.	J. F.		7/9/92
1A		J. F.	J. F.		7/5/92
P2	ORIGINAL	J. F.	J. F.		9/3/92
REV/ISS	AMENDMENTS	DRAWN	CHKD	D. O.	APVD

© TAIT ELECTRONICS			
HANDSFREE T2000-VOX			
IPN:	ISSUE:	ID:	
225-01210-03	B	2	SC.1
PROJECT:	DESIGNER:	FILE NAME:	FILE DATE:
T2000	J. FONE	2KHFL3B	12/5/93
			NO. SHEETS:
			2

	A	B	C	D	E	F	G	H	J	K	L	M
9												
8												
7												
6												
5												
4												
3												
2												
1												
0												

LINK NO	1	2	3	4	5
FUNCTION	EXTERNAL *	ALC-CONTROL	VOX-CONTROL	BUSY-CONTROL	RX-AUDIO INHIBIT
POSITION A	AUXILLARY	DISABLED	LOCKED ON	VOX-MUTED	DISABLED
B	EMERGENCY	—	—	VOX-INHIBIT	ENABLED
C	HUSH	—	—	—	—
D	HORN	—	—	—	—
NO LINK	DISABLED	ENABLED	AUX-CONTROL	DISABLED	—

* SIGNAL TO POWER-CONNECTOR P3/PIN-1 (ON MAIN RF PCB).

3B ADDED LINK-TABLE. SHEET-2						J. F.	J. F.	S. HEALD	12/5/93
REV/ISS	AMENDMENTS				DRAWN	CHKD	D. O.	APVD	DATE

© TAIT ELECTRONICS					
T2000 HANDSFREE PCB LINK-TABLE					
IPN:	225-01210-03	ISSUE:	B	ID:	2. SC.2
PROJECT:	T2000	DESIGNER:	JOE	FILE NAME:	2K0HFL3B
		FILE DATE:	12/5/93	NO. SHEETS:	2

