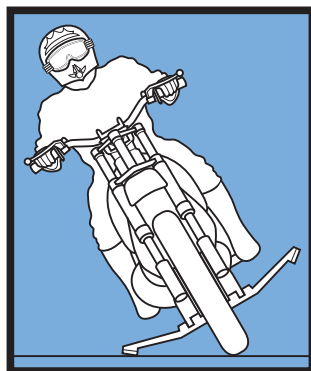
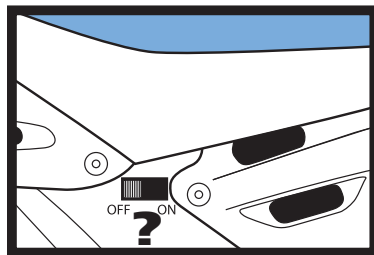


Operation

1. Slide Cycle POWER SWITCH left side of Cycle under seat) forward to ON position (Fig. 13). You will hear the motorized Gyro spin up to speed. Note: Turn switch off whenever possible to save batteries.
2. Place Cycle on ground, leaning on clear plastic STABILIZER (Fig. 14).
5. Push Left Stick upward to drive straight ahead.



Frequencies
2 Cycles can run together or race only if one is 49MHz and one is 27MHz

Driving Techniques

1. **Rolling Start:** Keeping fingers clear of wheels and spokes and pedaling feet, hold vehicle still on ground and push Left Stick forward, guiding bike forward until it takes off.
2. **Braking:** While driving, move the Left Stick backwards to brake.
3. **Coasting Stop:** While driving, release the Left Stick to roll to a stop.
4. **Turning Circle:** Your Cycle can steer in a circle about 10-15 feet across, depending on speed and surface. To turn more sharply, try "blipping" the left stick forward to pulse the power on and off for extra-slow speed (takes practice).
5. Transmitter has a range of about 65 feet. Don't drive too far or you may lose control of your Cycle. Don't touch antenna.

R/C Facts

1. When batteries start to wear down, Cycle may slow, stop, or refuse to respond to your control. It's time to replace batteries. *This is absolutely the #1 cause of all problems and questions!*
2. Radio frequency interference can interfere with the control of your Cycle. Buildings, power wires, other R/C transmitters, or CB radio can all cause problems. Pick a place to drive that's away from these things.
3. Hold Transmitter so antenna points up, not toward the vehicle. Keep Cycle within range to keep control.
4. Water, snow and sand can cause problems. Keep away from them. Wipe bike clean and dry after each use, including inside battery compartments. Clothing can be wiped with a damp cloth and allowed to air dry overnight.
5. Turn Cycle switch off immediately after running. Remove batteries for after use. Keep Cycle and Transmitter away from heat and direct sunlight and moisture.

Problem	Probable Cause	Correction
Cycle will not move or steer	<ul style="list-style-type: none"> • Batteries dead or low • Batteries installed incorrectly • Loose battery connection • Cycle switch is off • Rider preventing front wheel from turning 	<ul style="list-style-type: none"> • Remove and replace batteries, making sure battery direction (polarity, +/-) is correct and battery compartment contacts are clean. • Replace batteries with fresh, new alkaline cells OR recharge rechargeable cells. • Turn on Cycle switch. • Reposition Rider so front wheel can turn.
Cycle will not steer	<ul style="list-style-type: none"> • Rider positioned on front pegs 	<ul style="list-style-type: none"> • Cycle won't steer when Rider's riding front pegs. See R/C Riding Guide for "Straight Ahead Stunts."
Erratic operation, loss of control, short range	<ul style="list-style-type: none"> • Radio interference • Weak Transmitter battery • Weak Cycle batteries 	<ul style="list-style-type: none"> • Move to another location. • Point antenna up in the air, not at vehicle. Don't touch antenna. • Replace or recharge batteries
Cycle stops working after going into water or snow	<ul style="list-style-type: none"> • Water in battery/electronics/motor areas <p>DO NOT RUN IN OR NEAR WATER. WATER DAMAGE WILL VOID WARRANTY.</p>	<ul style="list-style-type: none"> • Turn Cycle off IMMEDIATELY, remove all batteries, dry inside and out with clean soft cloth and allow to dry overnight with battery doors off.

COMPLIANCE WITH FCC REGULATIONS

THIS DEVICE COMPLIES WITH PART 15 OF FCC RULES. OPERATION OF THIS DEVICE IS SUBJECT TO THE FOLLOWING TWO CONDITIONS:

- (1) THIS DEVICE MAY NOT CAUSE HARMFUL INTERFERENCE, AND
- (2) THIS DEVICE MUST ACCEPT ANY HARMFUL INTERFERENCE THAT MAY CAUSE UNDESIRABLE OPERATION.

This device generates and uses radio frequency energy and if not used properly may cause interference to radio and television reception. It has been tested and found to comply with the limits set by the FCC, which are designed to provide reasonable protection against such interference.

CAUTION: FCC Regulations state that changes or modifications to this product not expressly approved by the party responsible for compliance could void the user's authority to operate the equipment.

PRINTED IN CHINA

© 2001-2003 Taiyo Edge Ltd. Co., P.O. Box 1470, New Smyrna Beach, FL 32170, U.S.A. All Rights Reserved. U.S. Patent 6,482,069. China Patent 01139487.0. Other U.S. and Foreign Patents Pending.

Product specifications subject to change. Product may differ from illustrations. 2247-US



Taiyo Edge® R/C Consumer Service
We want to assist you!

DO NOT RETURN THE PRODUCT TO THE STORE!

Log on: Click "Help" at www.taiyoedge.com

E-mail: help@taiyoedge.com

TOLL-FREE CONSUMER HELPLINE

1-866-4-EDGE-RC (1-866-433-4372)

OWNER'S MANUAL

Important! Please read your Owner's Manual all the way through before operating your vehicle. Contains important information—keep for future reference.

Safety First

- Adult supervision is recommended.
- Drive your vehicle in a safe area away from people, pets, cars, etc. Not in streets!
- Don't touch or try to pick up vehicle when it is in motion. Wait until it stops completely.
- Keep hair, fingers, face and loose clothing away from the wheels, spokes and tires while the vehicle is switched on or while the transmitter is operating.
- Be a responsible Freestyle™ MX operator!

Batteries Required (not included)

6 "AA" Alkaline (or Rechargeable) Cells for Cycle and One 9-Volt Battery for Transmitter.

(See next page for information on rechargeable batteries. Rechargeable batteries and charger not included.)

Battery Cautions

CAUTION: TO AVOID BATTERY LEAKAGE

1. Make sure the batteries are inserted correctly and follow the toy and battery manufacturer's instructions.
2. Do not mix old and new batteries.
3. Do not mix alkaline, standard (carbon-zinc), or rechargeable (nickel-cadmium, nickel-metal hydride, rechargeable alkaline) batteries.
4. Remove weak or dead batteries from product.

More Important Battery Information

- Start with all new batteries and always replace ALL 6 vehicle batteries at the same time.
- Make sure battery polarity (direction) is correct.
- Use only battery type(s) recommended.
- Remove batteries from the product if it will not be used for a long period of time.
- Battery life may vary with the brand used.
- Do not recharge non-rechargeable batteries.
- Remove rechargeable batteries from the product before charging. Recharge batteries only under adult supervision and follow the battery and charger manufacturers' instructions.
- Do not short-circuit battery terminals.
- Keep vehicle and transmitter dry. If they get wet, immediately turn off power switch and remove batteries, wipe off excess moisture, and allow to air dry for at least 24 hours.
- Dispose of batteries safely and properly.

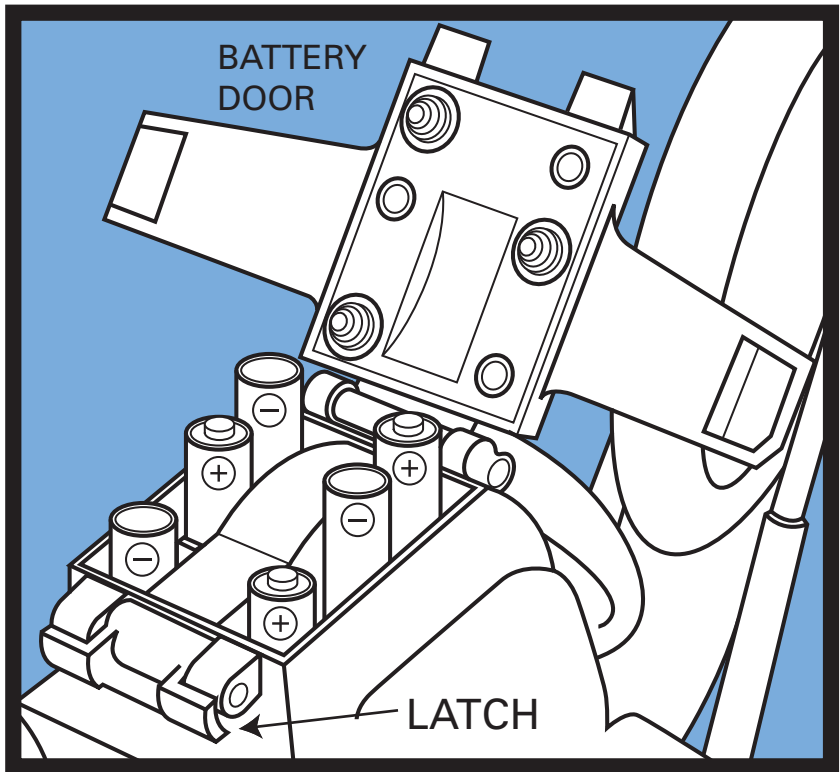
"Smart Circuitry"

Your precision Freestyle MX is equipped with advanced circuitry designed to protect electronic components under extreme operating conditions. If MX stops running during use, simply allow the joysticks to return to their neutral positions for 15 to 20 seconds, then resume normal operation.

Cycle Battery Installation

1. Swing open LATCH on BATTERY DOOR on bottom of cycle and open door (Fig. 1).
 2. Insert 6 fresh, new "AA" ALKALINE BATTERIES in the directions shown on label inside compartment door (Fig. 2).
 6. IMPORTANT: OBSERVE BATTERY POLARITY (DIRECTION). Make sure that (+) and (-) on batteries are matched to (+) and (-) on battery compartment labels.
 3. Close BATTERY DOOR and swing latch securely back into locked position.
- Note: Keep Cycle power off to save battery power until you're ready to run.

Fig 1



Transmitter Features and Operation

1. **Left stick:** Push up to go forward. Release to coast. Pull down to brake and reverse. Tip: "Pulse" the left stick (rapidly move up and release) for extra steering control. Slower speeds let you make sharper turns.
2. **Right stick:** Push left for Left Turn, right for Right Turn. Release to go straight.
3. **Antenna:** Hold Transmitter so antenna points straight up in the air. Don't touch the antenna during operation. Note: There is no on/off switch on Transmitter. Moving the sticks turns it on. Releasing the sticks turns it off (to save battery power).

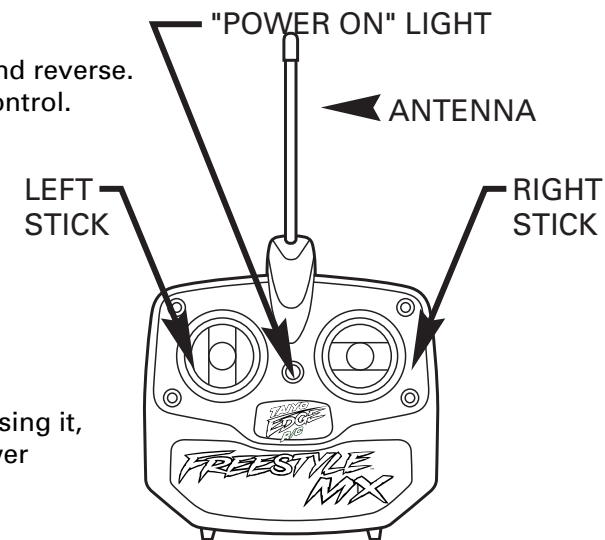
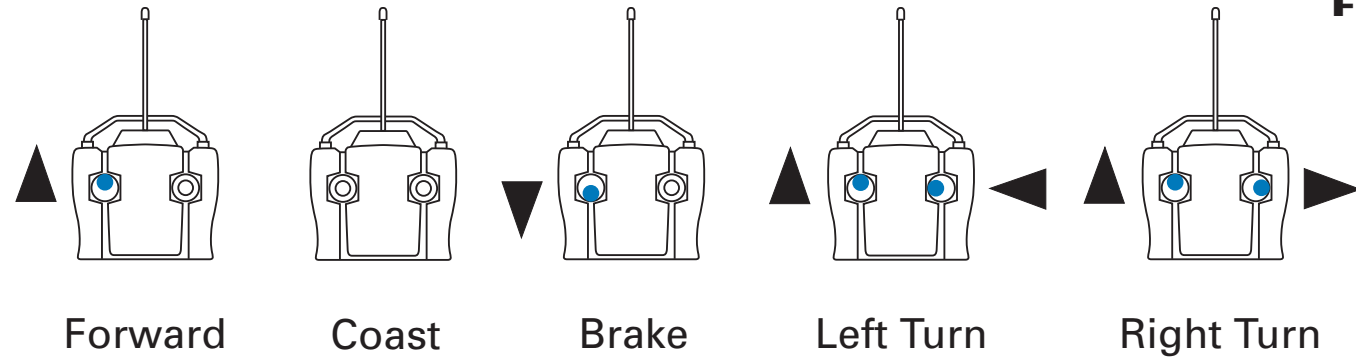


Fig 7

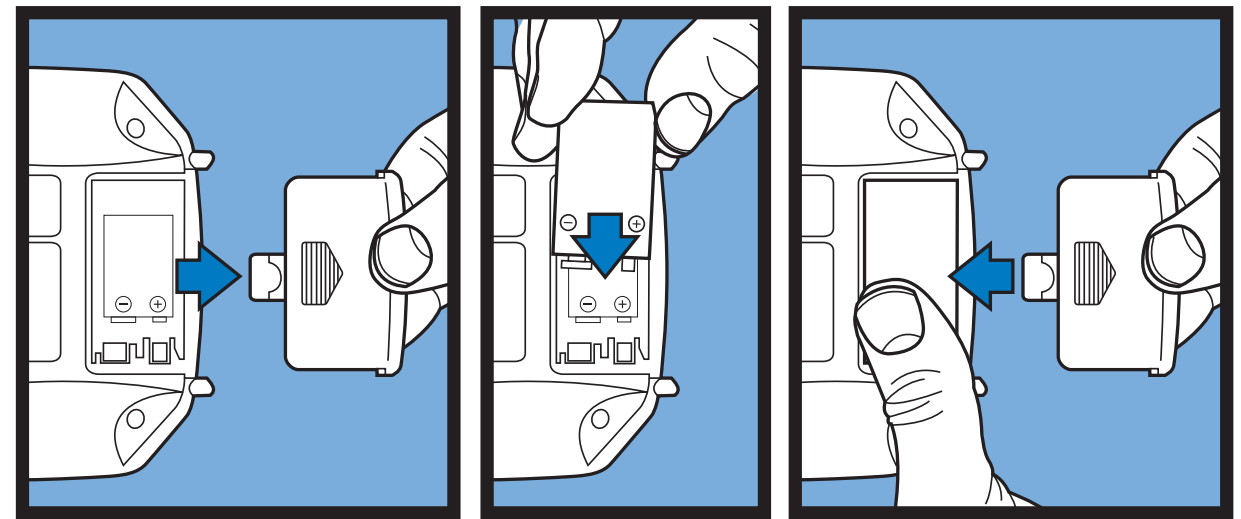
"Pulsing" The Left Stick

Repeatedly "pulse" the left (throttle) stick by rapidly moving it up and releasing it, up and release, up and release, etc., to control the speed of your ATV. Slower speeds help you make sharper turns.



Transmitter Battery Installation

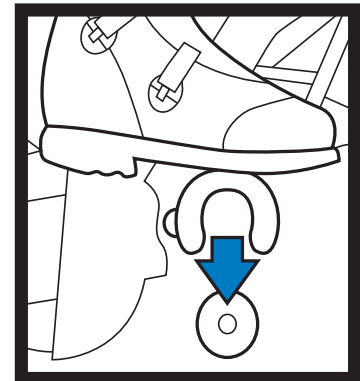
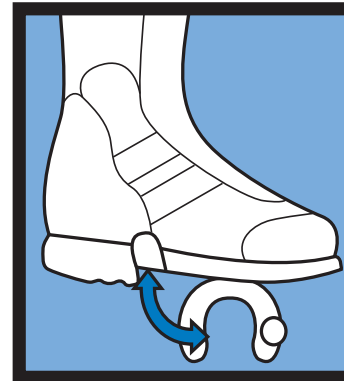
1. Slide open BATTERY DOOR on back of TRANSMITTER (Fig. 5).
2. Insert a fresh, new 9-VOLT BATTERY with the polarity (+/-) as shown on the bottom of battery compartment (Fig 6).
3. Hold battery in place with thumb and slide battery door all the way closed to secure battery. (Fig. 6A).
4. Check for transmitter operation by looking for the red "POWER ON" LIGHT on front to light when a STICK is moved. If LIGHT does not come on, check battery polarity. If LIGHT still does not light, install a brand-new battery.



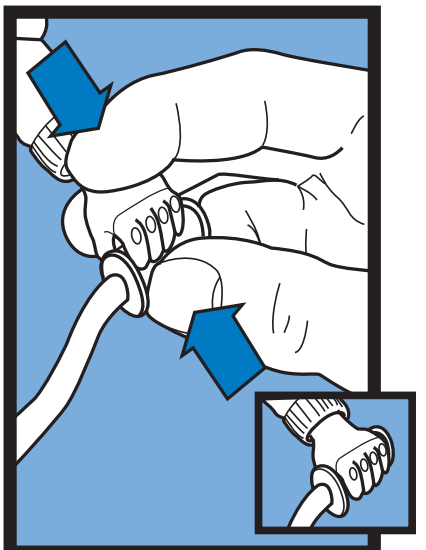
Seating Rider

IMPORTANT: RIDER MUST BE SEATED CORRECTLY FOR PROPER OPERATION, MAKING SURE HANDS, FEET AND CLOTHING DO NOT TOUCH WHEELS OR GROUND.

1. Face Rider's head forward.
2. Swing out PRONGS from bottom of BOOTS as shown. (Fig. 8)
3. Snap PRONG on each shoe over each FOOTPEG.
2. Seat Driver in seat.
4. Hold WRIST between index and middle fingers as shown (Fig. 10) and place thumb on front of HANDLEGRIP. Squeeze fingers and thumb together to push HAND all the way onto HANDLEGRIP as shown. Repeat for other HAND.



SEE FREESTYLE™ R/C RIDING GUIDE FOR STUNT RIDING POSITIONS



Using Rechargeable Cells

(Batteries and Charger not included.) Rechargeable "AA" size batteries may be used in Cycle. You'll still need to purchase a 9-Volt Alkaline battery for the transmitter. FOR SAFETY AND BATTERY CHARGING INFORMATION, READ AND FOLLOW THE INSTRUCTIONS THAT CAME WITH YOUR RECHARGEABLE BATTERIES AND RECHARGER. ADULT SUPERVISION OF BATTERY CHARGING IS RECOMMENDED.