

# CANNED HEAT™

RADIO CONTROL

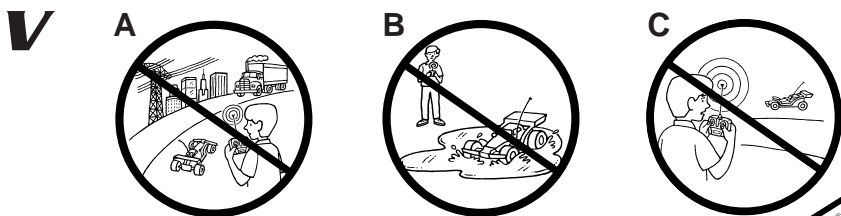
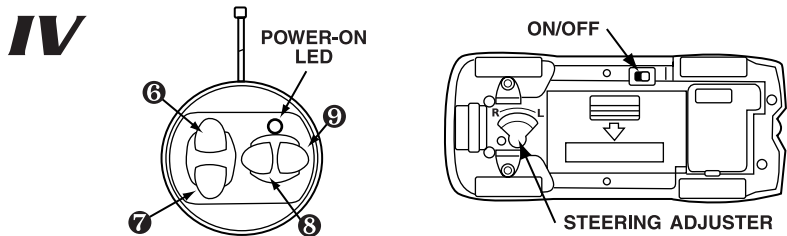
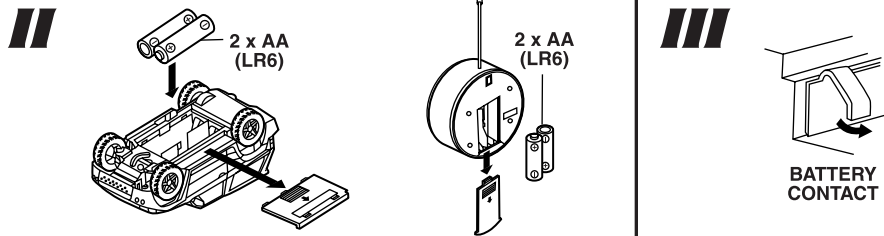
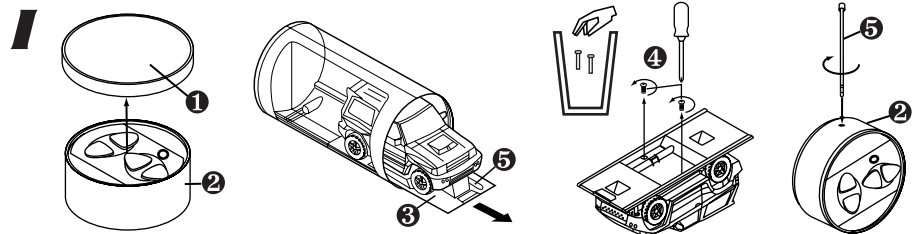
**TYCO R/C SERVICE CENTER**

**WE CARE!**

If you have questions or difficulty operating this vehicle,  
**DO NOT RETURN IT TO THE STORE!**  
 Call Toll-Free 1-888-557-TYCO (1-888-557-8926)  
 for technical help, or **RAPID** parts and service assistance.

Please read thoroughly and retain for future reference.

36806-0920



## I. GET READY

1. Remove lid ①. (Keep lid for storage.)
2. Twist transmitter ② to remove from tube.
3. Slide display stand ③ out of tube.
4. Turn display stand over. Use screwdriver to remove the 2 screws ④ and remove vehicle from stand. DISCARD SCREWS IMMEDIATELY.
5. Carefully slide antenna ⑤ out of stand and screw antenna onto transmitter.

## II. BATTERY INSTALLATION (Transmitter & Vehicle)

1. Push battery doors open in direction of arrow.
2. Vehicle & transmitter require 2 AA (LR6) alkaline batteries each. Install with polarity (+/-) as shown inside battery compartment.
3. Close battery doors.

## III. BATTERY INFORMATION

- Bent or dirty contacts may result in loss of power.
- If battery does not fit correctly, gently bend back metal contact as shown in diagram.
- Insure that battery polarity is correct.

- Use only batteries of the type recommended (or equivalent).
- Do not mix old and new batteries.
- Do not mix alkaline, standard (carbon-zinc), or rechargeable (nickel-cadmium) batteries.
- Remove used-up batteries immediately.
- Remove batteries if vehicle will not be used for a long period.
- For best performance use alkaline batteries. Battery life may vary depending on battery brand.
- Do not recharge non-rechargeable batteries.
- Do not short-circuit terminals.
- Remove rechargeable batteries before recharging. Recharge batteries only under adult supervision.

## IV. OPERATION

1. Your transmitter has an automatic ON feature. Just turn vehicle ON. Then press any transmitter button to run and control vehicle.
2. Your vehicle will go forward & reverse. To turn, press button ⑧ or ⑨.
3. Adjust steering adjuster (if necessary) to run straight.
4. Turn vehicle OFF after use.

- ⑥ FORWARD
- ⑦ REVERSE
- ⑧ LEFT TURN
- ⑨ RIGHT TURN

## V. CONSUMER INFORMATION

### TIPS & HINTS

- A. R/C vehicles can be affected by interference caused by high tension wires, CB radios, or other R/C vehicles running nearby on the same frequency as yours. You may have to choose a different place to play.
- B. DO NOT operate your vehicle over wet surfaces. Avoid sand, water & snow.
- C. Hold antenna up, not pointed down toward vehicle. Maximum range for the vehicle should be 40'/12m.

### SAFETY PRECAUTIONS

Adults, this toy is recommended for children 5 years of age and older. To ensure that the child's play is both safe and fun, please review the operating instructions and these general safety rules with the child.

- DO NOT pick up vehicle while in motion.
- Keep fingers, hair and loose clothing away from the tires and the wheel hubs while the vehicle is switched ON.
- Adult supervision is recommended during operation of this vehicle.
- To avoid accidental operation, remove batteries when not in use.
- DO NOT operate your vehicle on streets! They are for real cars.