

# CANNED HEAT

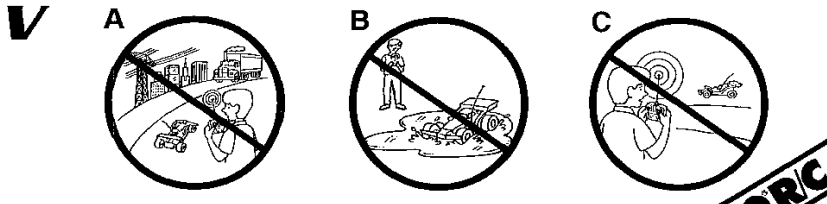
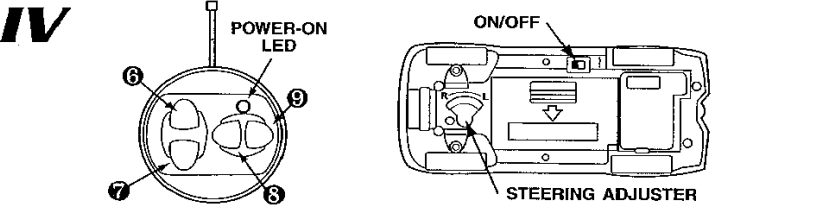
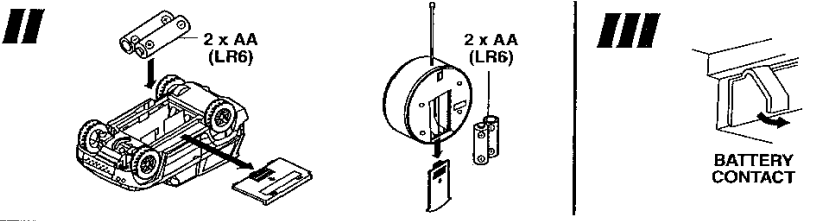
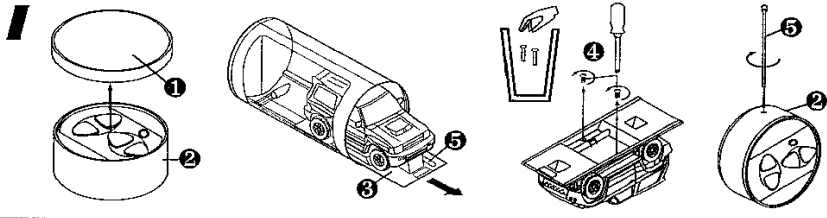
**TYCO R/C SERVICE CENTER**

**WE CARE!**

If you have questions or difficulty operating this vehicle,  
**DO NOT RETURN IT TO THE STORE!**  
 Call Toll-Free 1-888-557-TYCO (1-888-557-8926)  
 for technical help, or **RAPID** parts and service assistance.

Please read thoroughly and retain for future reference.

36806-0920



**I. GET READY**

1. Remove lid ❶. (Keep lid for storage.)
2. Twist transmitter ❷ to remove from tube.
3. Slide display stand ❸ out of tube.
4. Turn display stand over. Use screwdriver to remove the 2 screws ❹ and remove vehicle from stand. **DISCARD SCREWS IMMEDIATELY.**
5. Carefully slide antenna ❺ out of stand and screw antenna onto transmitter.

**II. BATTERY INSTALLATION (Transmitter & Vehicle)**

1. Push battery doors open in direction of arrow.
2. Vehicle & transmitter require 2 AA (LR6) alkaline batteries each. Install with polarity (+/-) as shown inside battery compartment.
3. Close battery doors.

**III. BATTERY INFORMATION**

- Bent or dirty contacts may result in loss of power.
- If battery does not fit correctly, gently bend back metal contact as shown in diagram.
- Insure that battery polarity is correct.

- Use only batteries of the type recommended (or equivalent).
- Do not mix old and new batteries.
- Do not mix alkaline, standard (carbon-zinc), or rechargeable (nickel-cadmium) batteries.
- Remove used-up batteries immediately.
- Remove batteries if vehicle will not be used for a long period.
- For best performance use alkaline batteries. Battery life may vary depending on battery brand.
- Do not recharge non-rechargeable batteries.
- Do not short-circuit terminals.
- Remove rechargeable batteries before recharging. Recharge batteries only under adult supervision.

**IV. OPERATION**

1. Your transmitter has an automatic ON feature. Just turn vehicle ON. Then press any transmitter button to run and control vehicle.
2. Your vehicle will go forward & reverse. To turn, press button ❸ or ❹.
3. Adjust steering adjuster (if necessary) to run straight.
4. Turn vehicle OFF after use.

- ❶ FORWARD
- ❷ REVERSE
- ❸ LEFT TURN
- ❹ RIGHT TURN

**V. CONSUMER INFORMATION**

**TIPS & HINTS**

- A. R/C vehicles can be affected by interference caused by high tension wires, CB radios, or other R/C vehicles running nearby on the same frequency as yours. You may have to choose a different place to play.
- B. **DO NOT** operate your vehicle over wet surfaces. Avoid sand, water & snow.
- C. Hold antenna up, not pointed down toward vehicle. Maximum range for the vehicle should be 40'/12m.

**SAFETY PRECAUTIONS**

Adults, this toy is recommended for children 5 years of age and older. To ensure that the child's play is both safe and fun, please review the operating instructions and these general safety rules with the child.

- **DO NOT** pick up vehicle while in motion.
- Keep fingers, hair and loose clothing away from the tires and the wheel hubs while the vehicle is switched ON.
- Adult supervision is recommended during operation of this vehicle.
- To avoid accidental operation, remove batteries when not in use.
- **DO NOT** operate your vehicle on streets! They are for real cars.

© 1998 Mattel, Inc., Mt. Laurel, NJ 08054 U.S.A. **PRINTED IN CHINA.** All Rights Reserved. ® and ™ designate U.S. trademarks of Mattel, Inc.

Retain this address for future reference: Mattel U.K., Ltd., Meridian West, Leicester LE3 2WT. Mattel Australia Pty., Ltd., Richmond, Victoria 3121 - Consumer Advisory Service: 1800 800 812 (valid only in Australia).

Mattel East Asia Limited, 930 Ocean Centre, Harbour City, HK, China. In Britain 49 MHz is not available. 27 MHz can be raced against 40 MHz vehicles.

**Caution:** FCC Regulations state that changes or modifications to this product not expressly approved by the party responsible for compliance could void the user's authority to operate the equipment.