



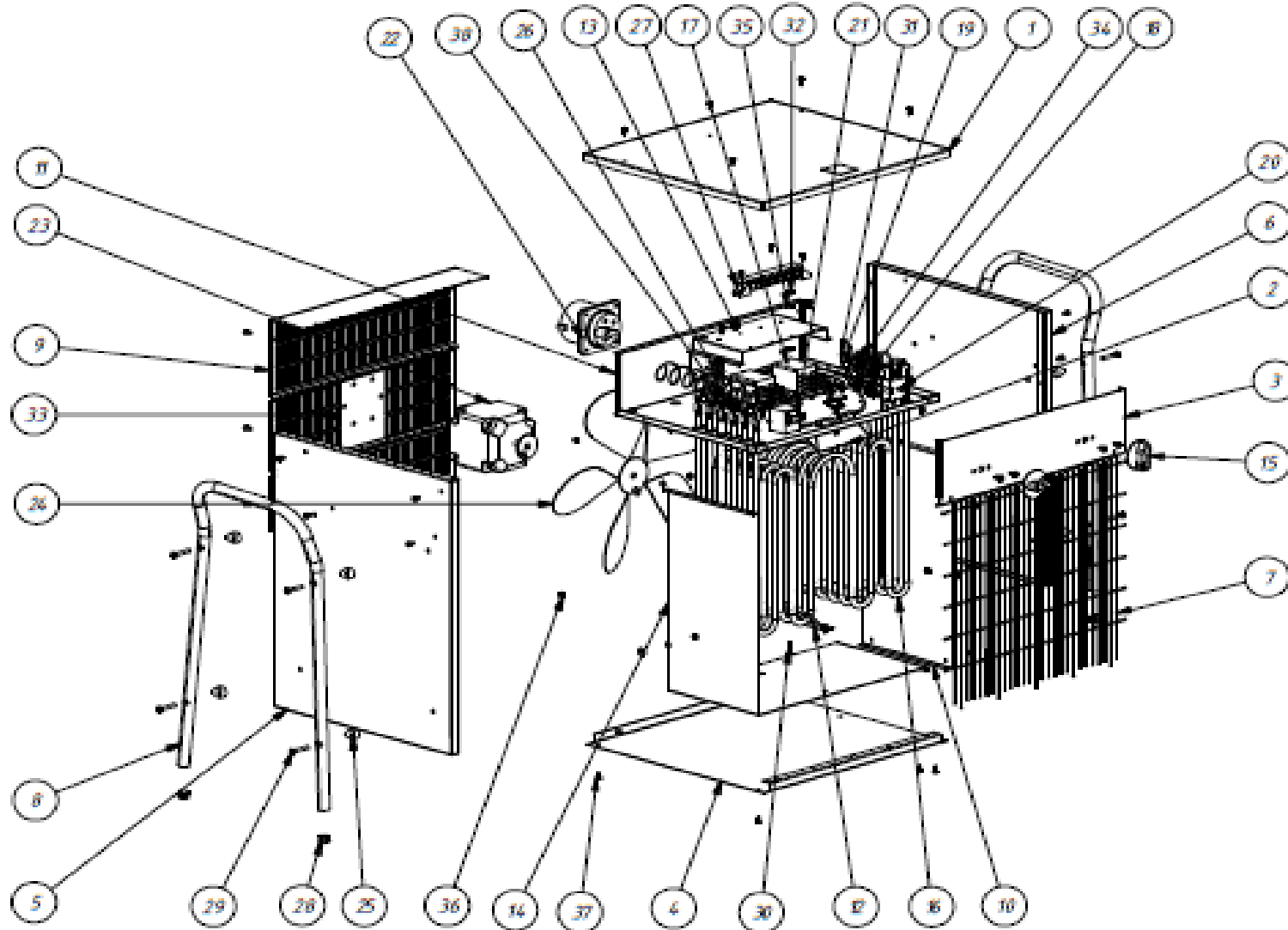
CREATIVE EQUIPMENT CC

18 Main Road, Fishers Hill, Germiston, 1401
Tel: 011 828 5085 Fax: 011-828-5085
crequip@global.co.za www.creativelp.co.za



ILLUSTRATED PARTS LIST

MODEL B15
PRODUCT ELECTRIC FAN HEATER



**CREATIVE EQUIPMENT CC**

18 Main Road, Fishers Hill, Germiston, 1401
 Tel: 011 828 5085 Fax: 011-828-5085
 crequip@global.co.za www.creativelp.co.za

**ILLUSTRATED PARTS LIST**

MODEL B15
 PRODUCT ELECTRIC FAN HEATER

#	PART #	DESCRIPTION	QTY
1	S/R	TOP PANEL	1
2	S/R	BOUNDRY LAYER	1
3	S/R	NAME PLATE PANEL	1
4	S/R	DOWN PANEL	1
5	S/R	RIGHT PANEL	1
6	S/R	LEFT PANEL	1
7	4511.274	GRILLE 15 EPB	1
8	4510.129	PIPE HANDLE	2
9	4511.248	BACK PANEL	1
10	S/R	HEAT SHIELD	1
11	S/R	SHELF	1
12	4511.251	STABLE ELEMENT	1
13	S/R	CONTACTOR FASTENING	1
14	S/R	HEAT SHIELD "L" TYPE	1
15	4510.610	KNOB 44mm	2
16	4510.374	HEATING ELEMENT 2500W	6
17	4510.444	RELAY 230V 16A/250V	2
18	4510.450	OVERHEAT THERMOSTAT 16A/250V/70°C	1
19	4510.404	OVERHEAT SENSOR 16A/250V 60°C/NO	1
20	4510.401	ROTARY SWITCH 16A/400V	1

#	PART #	DESCRIPTION	QTY
21	4510.416	CAPILLARY THERMOSTAT 16A/250V 0-40°C	1
22	4510.411	PLUG PANEL MOUNTED 32A/400V 3P+N+E (56)	1
23	4510.321	MOTOR 25W/230V	1
24	4510.314	FAN 300/26	1
25	4510.603	PLASTIC DISTANCE 15mm	8
26	4510.608	BELT 6/3 110	3
27	4510.414	SCREW TWERMINAL BLOCK 6x40A/450V 6mm ²	1
28	4510.623	PIPE CAP	4
29	4510.848	SCREW M4x30	8
30	4510.804	SCREW M4x20	1
31	4510.821	TAPPING SCREW ST4.8X13	16
32	4510.808	HEXAGON NUT M4	3
33	4510.814	SCREW M4X8	5
34	4510.841	SHEET-METAL SCREW ST3,9X9,5	2
35	4510.810	SPRING LOCK WASHERS A4	11
36	4510.812	PLAIN WASHER M4	8
37	4510.847	CROSS RECESSED PAN HEAD TAPING SCREW ST3,5X9,5	54
38	4511.621	SEAL WIRE	1
	S/R	Parts available on special request only	