



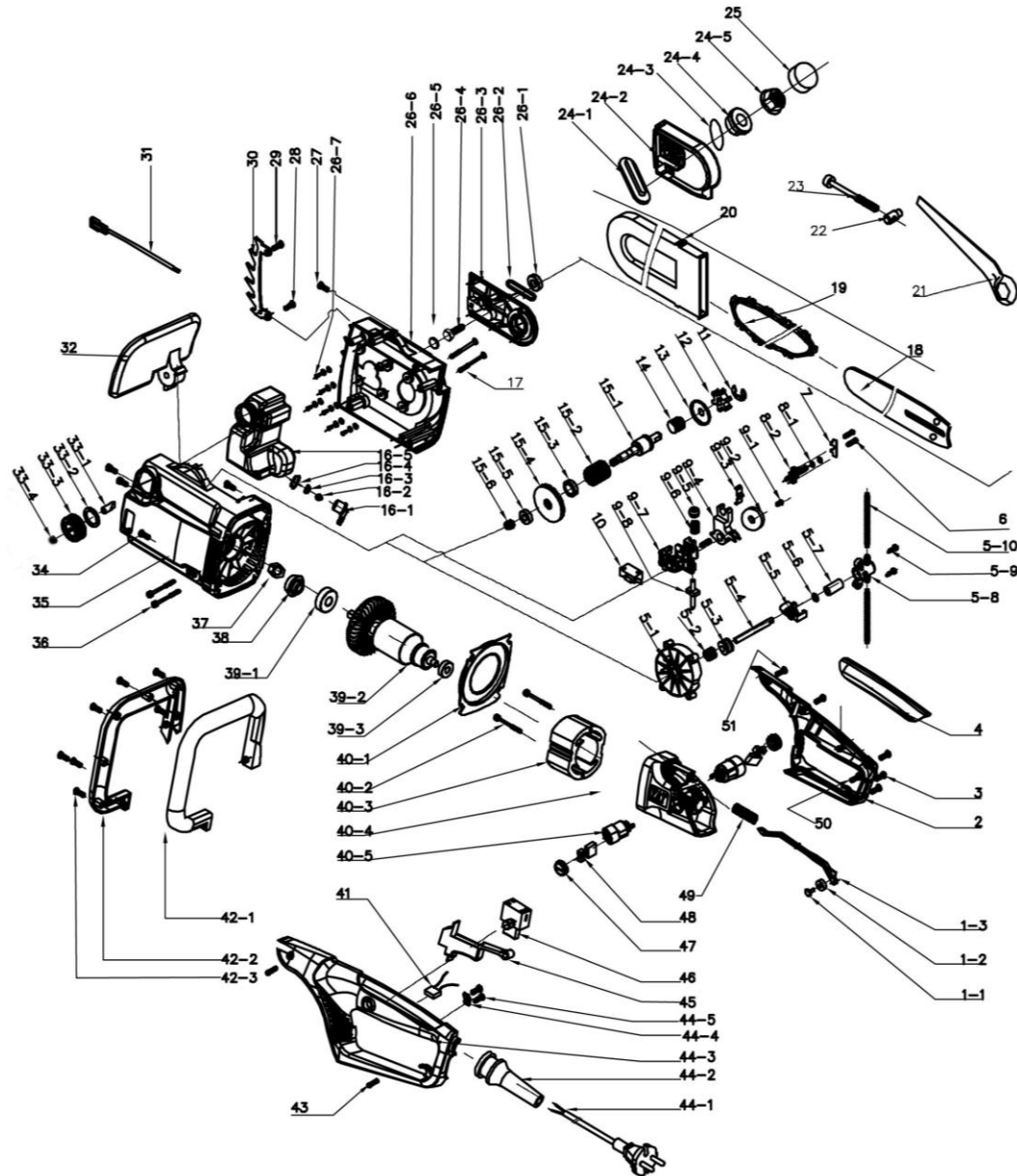
CREATIVE EQUIPMENT CC

18 Main Road, Fishers Hill, Germiston, 1401
Tel: 011 828 5085 Fax: 011-828-5085
crequip@global.co.za www.creativelp.co.za



ILLUSTRATED PARTS LIST

MODEL	TL2000W	OUTPUT	2000w
PRODUCT	Talon 2000w Electric Chainsaw with 400mm Bar		



**CREATIVE EQUIPMENT CC**

18 Main Road, Fishers Hill, Germiston, 1401
 Tel: 011 828 5085 Fax: 011-828-5085
 crequip@global.co.za www.creativelp.co.za

**ILLUSTRATED PARTS LIST**

MODEL TL2000W OUTPUT 2000w
 PRODUCT Talon 2000w Electric Chainsaw with 400mm Bar

#	PART #	DESCRIPTION	QTY
1	8440-471510-0000010	Switch push rod group	1
1-1	8086-462701-0000110	Wheel Pin	1
1-2	8121-462701-0100110	Slide Wheel	1
1-3	8043-471503-0101710	Switch push rod	1
2	8001-471502-0043910	Right rear left handle	1
3	8SJAB50-16B	Self-trapping screw	6
4	8005-471501-0000310	Strip	1
5	8440-467607-0000010	Pump Group	1
5-1	8187-471501-0000010	Pump fix board	1
5-2	8123-472201-0000000	Worm gear	1
5-3	8121-472201-0001710	Worm wheel	1
5-4	8304-472201-0000000	Piston Sleeve	1
5-5	8292-472203-0001710	Piston Support	1
5-6	8204-462201-0000120	Sealing Ring	1
5-7	8211-472202-0000000	Piston Sleeve	1
5-8	8336-472203-0000010	Pump body	1
5-9	8SNAB30-12B	Self-trapping screw	1
5-10	234-1002	Oil tube	1
6	8SJAB40-25B	Self-trapping screw	1
7	8181-462701-0000000	Back plate	1
8	8440-467608-0000010	Oil Grid	1
8-1	8204-462201-0000120	O-Ring	1
8-2	8213-471501-0001710	Oil Adaptor	1
9	8440-471519-0000010	Braking Rod Group	1
9-1	8SJGD05-12B	Machine screw	1
9-2	8202-462203-0000000	Braking washer	1
9-3	8324-462701-0000000	Spring Leaf	1
9-4	8043-462702-0001710	Divider Rod	1

#	PART #	DESCRIPTION	QTY
9-5	8WF-05B	Washer	1
9-6	8342-467601-0000000	Braking Rob spring	1
9-7	8187-471502-0000000	Braking Rob Fix spring	1
9-8	8147-471501-0000010	Braking	1
10	8042-462701-0100010	Control switch	1
11	8CE-07B	E-circlip	1
12	8128-462201-0000000	Sprocket	1
13	8208-462201-0000000	Gland Bonnet	1
14	8342-462304-0000000	Spring	1
15	8440-467610-0000013	Shaft Group	1
15-1	8085-471501-0100000	Shaft	1
15-2	8342-462301-0000000	Braking spring	1
15-3	8063-462701-0000000	Shaft sleeve	1
15-4	8123-471502-0001710	Umbrella gear	1
15-5	8BC-220807-ST03	608Z rear bearing	1
15-6	8NH-08D	Self-trapping nut	1
16	8440-467611-0000010	Tank Group	1
16-1	8213-462701-0001710	Output adaptor	1
16-2	8326-462701-0000010	sponge	1
16-3	8348-462701-0001710	Adaptor Choke Plug	1
16-4	8331-462701-0000020	Rubber Sleeve	1
16-5	8165-471501-0000010	Tank	1
17	8SJAB50-35B	Self-tapping screw	1
18	243-0021	Chain bar (18")	1
19	243-0036	Saw chain (18")	1
20	8331-463101-0000110	Blade cover	1
21	8261-463101-0000000	Spanner	1
22	8207-463101-0000000	Tension nut	1

**CREATIVE EQUIPMENT CC**

18 Main Road, Fishers Hill, Germiston, 1401
 Tel: 011 828 5085 Fax: 011-828-5085
 crequip@global.co.za www.creativelp.co.za

**ILLUSTRATED PARTS LIST**

MODEL TL2000W OUTPUT 2000w
 PRODUCT Talon 2000w Electric Chainsaw with 400mm Bar

#	PART #	DESCRIPTION	QTY
23	8207-481001-0000000	Tension screw	1
24	8440-471501-0000110	End cap group	1
24-1	8208-462305-0000110	End cap seal	1
23	8207-481001-0000000	Tension screw	1
24	8440-471501-0000110	End cap group	1
24-1	8208-462305-0000110	End cap seal	1
23	8207-481001-0000000	Tension screw	1
24	8440-471501-0000110	End cap group	1
24-1	8208-462305-0000110	End cap seal	1
23	8207-481001-0000000	Tension screw	1
24	8440-471501-0000110	End cap group	1
24-1	8208-462305-0000110	End cap seal	1
23	8207-481001-0000000	Tension screw	1
24	8440-471501-0000110	End cap group	1
24-1	8208-462305-0000110	End cap seal	1
24-2	8021-471501-0000110	End Cap	1
24-3	8162-4775046-001	Brand label	1
24-4	8334-463101-0000000	Shaft Sleeve	1
24-5	8ND-08D	Flange nut	1
25	8185-463101-0000110	Nut Shield	1
26	8440-467613-0000013	Middle cover group	1
26-1	8BC-221006-ST03	6900Z bearing	1
26-2	8208-481501-0000120	output oil glib seal	1
26-3	8347-471801-0000000	Middle cover insert	1
26-4	8206-462201-0200000	Machine screw	1
26-5	8202-462205-0000120	seal shim	1
26-6	8023-471501-0000110	Middle cover	1
26-7	8SJAN40-12B	Machine screw	1

#	PART #	DESCRIPTION	QTY
27	8SJAB40-14B	Self-tapping screw	1
28	8SJAB50-35B	Self-tapping screw	1
29	8SJAB50-16B	Self-tapping screw	1
30	8181-471501-0000001	Buffer Board	1
31	8413-471501-0000010	Connection wire	1
32	8044-471501-0000110	Switch Trigger	1
33	8440-463003-0000120	Oil cover Group	1
33-1	8335-463102-0000120	Value Group	1
33-2	8208-463101-0000120	Seal	1
33-3	8020-463003-0000110	Tank cover	1
33-4	8185-463001-0000120	Sponge	1
34	8SJAN50-20B	Self-tapping screw	1
35	8146-491901-0000110	Variable-speed Box	1
36	8SJAN50-50B	Self-tapping screw	1
37	6NA-08D	Nut	1
38	8123-471501-0000000	Small umbrella gear	1
39	8440-491905-0000003	Rotor Groupware	1
39-1	8BC-261008-ST03	6201Z front bearing	1
39-2	8402-491903-0000010	Rotor	1
39-3	8BC-220707-ST03	698z rear bearing	1
40	8440-471512-0043910	Housing Groupware	1
40-1	8182-471501-0001710	Wind screen	1
40-2	8SJAN40-60B	Self-tapping screw	1
40-3	8405-481003-0000010	Stator	1
40-4	8006-471503-0043910	Housing	1
40-5	8409-467601-0000010	Brush holder	1
41	8416-471401-0000020	Capacitor	1
42	8440-467612-0000110	Assistance handle Group	1

**CREATIVE EQUIPMENT CC**

18 Main Road, Fishers Hill, Germiston, 1401
 Tel: 011 828 5085 Fax: 011-828-5085
 crequip@global.co.za www.creativelp.co.za

**ILLUSTRATED PARTS LIST**

MODEL TL2000W OUTPUT 2000w
 PRODUCT Talon 2000w Electric Chainsaw with 400mm Bar

#	PART #	DESCRIPTION	QTY
42-1	8003-471501-0000110	Left assistance handle	1
42-2	8003-471502-0000110	Right assistance handle	1
42-3	8SJAB40-14B	Self-tapping screw	1
43	8SJAB40-14B	Self-tapping screw	1
44	8440-471505-0043910	Rear left handle Group	1
44-1	8422-471511-0000010	Cable	1
44-2	8332-353201-0000120	Cable Sleeve	1
44-3	8001-471501-0043910	Rear left handle	1
44-4	8184-302201-0001710	Cable Holder	1

#	PART #	DESCRIPTION	QTY
44-5	8SJAB40-12B	Self-tapping screw	1
45	8312-471501-0000110	Switch Knob	1
46	8042-462201-0000110	Switch	1
47	8407-467601-0000010	Brush cover	1
48	8406-471801-0000000	Brush	1
49	8342-471502-0000000	push rod spring	1
50	8SJAB30-8B	Self-tapping screw	1
51	8SJAB40-14B	Self-tapping screw	1