

Tantalus Utility Network™



TUNet® TC-1120/1120-RD

And

TC-1220/1220-RD

Quick Reference

The TC-1120/1120-RD and TC-1220/1220-RD is a family of two-way 900 MHz LAN smart meter communication modules that are integrated into the Itron CENTRON® C2s family of electrical watt-hour meters. The CENTRON C2s metrology unit sends a burst message that conforms to the ANSI C12.19 PSEM protocol to the communication module. The Tantalus LAN communication module delivers meter readings on request or on a programmed schedule for Time-of-Use and interval data applications. The LAN communication module also reports power outages and monitors power quality including voltage (plus sag/swell alarms) and momentary outages (blinks).

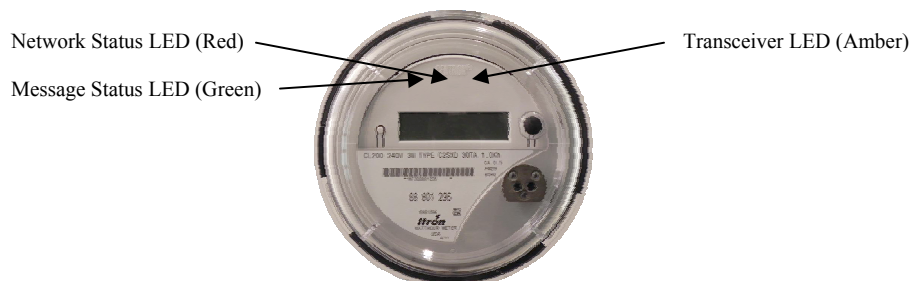


Energized meters, meter sockets and distribution lines present the risk of electrical shock. All work on this equipment should be performed by qualified metering specialists or industrial electricians.

Personnel working with this equipment should follow all utility company established operation and safety procedures.

Installation Instructions

1. Remove the existing meter from the meter socket and record the final reading per utility standard practice.
2. Inspect the meter socket jaws to ensure that they are in good condition.
3. Perform voltage checks, line-to-line and line-to-neutral, to ensure the voltage is at proper levels.
4. Visually inspect the meter. Ensure that the optical interface is secured in place on the meter base.
5. Install the meter and observe the Network Status LED to verify that a valid association candidate is found per the table on the reverse page.
6. Install the meter ring and seal.
7. Record the new meter number and initial reading per utility standard practice.



TUNet® LAN Module Network Status LED (Red)	
Start-up/Power-up	Solid ON (Fast flashing indicates module is not programmed)
Unassociated/Re-associating	Solid ON
Valid association candidate found	Flashing
Full network association confirmed	OFF
TUNet® LAN Module Message Status LED (Green)	
Start-up/Power-up	OFF
Message queued for transmission	Long flash
Valid message received (addressed to this device)	Short flash
TUNet® LAN Module Transceiver (XVR) LED (Amber)	
Start-up/Power-up	OFF
RF packet transmitted	Long flash
RF packet received (LAN activity)	Short flash

Specifications	
Frequency Range: 902-928 MHz frequency hopping, license exempt	Operating Temperature: -22 to 140°F (-30 to +60°C)
Modulation: FSK	Operating Humidity: 5 to 95% non-condensing
Antenna: under the glass	Standards:
Power supply: 120V/240VAC	FCC CFR Title 47 Part 15b (unintentional radiators)
Power consumption: Quiescent 0.75 watts typical	ANSI C12.1:2001 Sections: 4.7.3.1 Insulation, 4.7.3.11 EFT/Burst 4.7.3.3.1 Surge Immunity, 4.7.3.3.2 Ring Wave Immunity

This device complies with part 15 of the FCC Rules. Operation is subject to the following two conditions: (1) This device may not cause harmful interference, and (2) this device must accept any interference received, including interference that may cause undesired operation. Changes or modifications to this device not expressly approved by Tantalus Systems Corp. could void the user's authority to operate the equipment.

Contact Tantalus

Address all comments to:

Technical Support
Tantalus Systems Corp.
301 – 3480 Gilmore Way
Burnaby, B.C. V5G 4Y1

Telephone: 604-299-0458

Fax: 604-451-4111

Web: <http://www.tantalus.com>

Email: techsupport@tantalus.com

Copyright © 2012 Tantalus Systems Corp. All rights reserved. No part of this document or associated software may be reproduced, adapted, stored or transmitted in any form or by any means except with prior permission of Tantalus Systems Corp. or as explicitly allowed by copyright laws applicable to your situation. This document contains proprietary information of Tantalus Systems Corp. that may be disclosed only to your permitted workers and users of TUNet® products and services who need to know.

Tantalus, TUNet, Tantalus Utility Network, the stylized T logo, and the names of the products and services offered therewith, are trademarks of Tantalus Systems Corp. All other product and brand names referenced herein may be trademarks of their respective owners.

Tantalus assumes no responsibility for errors or omissions in this document or their consequences. The information is subject to change without notice. Please report any errors to Tantalus at the address above.