

## 2. In-Box

### 2.1 Main Device



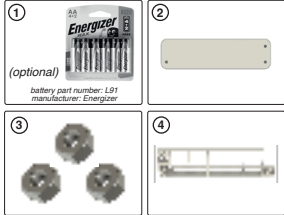
### 2.2 Accessories

Included in the box:

- 1 Pack of 6 AA Batteries
- 2 Metal Mounting Plate
- 3 Hexagonal Nuts x 3
- 4 Level Adjustment Bracket

Tools required:

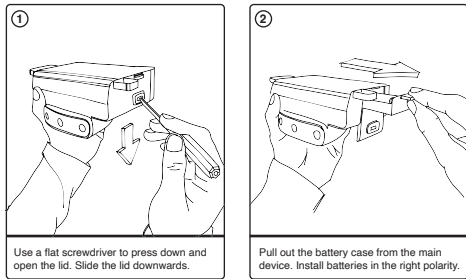
- (not included in the box)
- 1 Flat Screwdriver



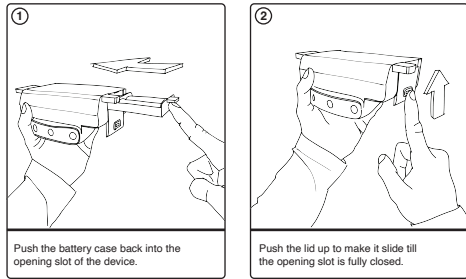
## 3. Installation Steps

### 3.1 Battery Insertion

#### HOW TO OPEN THE LID AND REMOVE THE BATTERY CASE



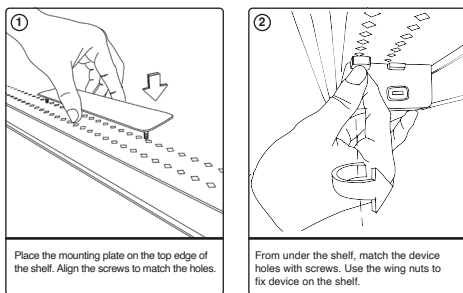
#### HOW TO REINSERT THE BATTERY CASE AND CLOSE THE LID



TO REPLACE THE BATTERIES, REPEAT THE SAME STEPS AS LISTED IN SECTION 3.1, WITH THE DEVICE MOUNTED ON THE SHELF

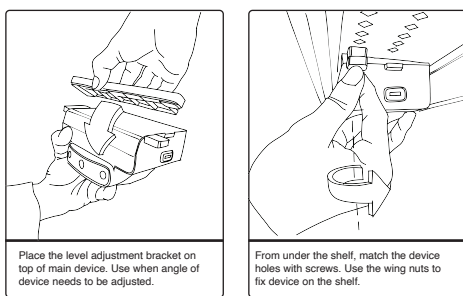
### 3.2 Mounting the Device on the Shelf

#### HOW TO MOUNT THE DEVICE ON THE SHELF



### 3.3 Mounting with Bracket (Optional)

#### HOW TO MOUNT THE DEVICE ON THE SHELF WITH LEVEL ADJUSTMENT BRACKET IN-BETWEEN



## 4. Additional Information

### 4.1 Device Compliance Information

#### Regulator Note

This device complies with part 15 of the FCC Rules. Operation is subject to the following two conditions:  
(1) This device may not cause harmful interference, and  
(2) this device must accept any interference received, including interference that may cause undesired operation.

#### RF Exposure Statement

The equipment shall be installed to provide a minimum separation distance of 20 cm between the radiating part and the user to ensure compliance with the RF Exposure requirements.

#### Caution

Any changes or modification not expressly approved by the party responsible for compliance shall invalidate the user's authority to operate the equipment.

#### Note:

This equipment has been tested and found to comply with the limits for a Class B digital device, pursuant to part 15 of the FCC Rules. These limits are designed to provide reasonable protection against harmful interference in a residential installation. This equipment generates, uses and can radiate radio frequency energy and, if not installed and used in accordance with the instructions, may cause harmful interference to radio communications. However, there is no guarantee that interference will not occur in a particular installation. If this equipment does cause harmful interference to radio or television reception, which can be determined by turning the equipment off and on, the user is encouraged to try to correct the interference by one or more of the following measures:

- Reorient or relocate the receiving antenna.
- Increase the separation between the equipment and receiver.
- Connect the equipment into an outlet on a circuit different from that to which the receiver is connected.
- Consult the dealer or an experienced radio/TV technician for help.

## 5. Contact Us

### 5.1 Further Assistance & Declarations

parsec.support@target.com



End of Document.